

Hatfield Woodhouse Community Profile Well Doncaster



Well Doncaster

Community Led Health and Wealth

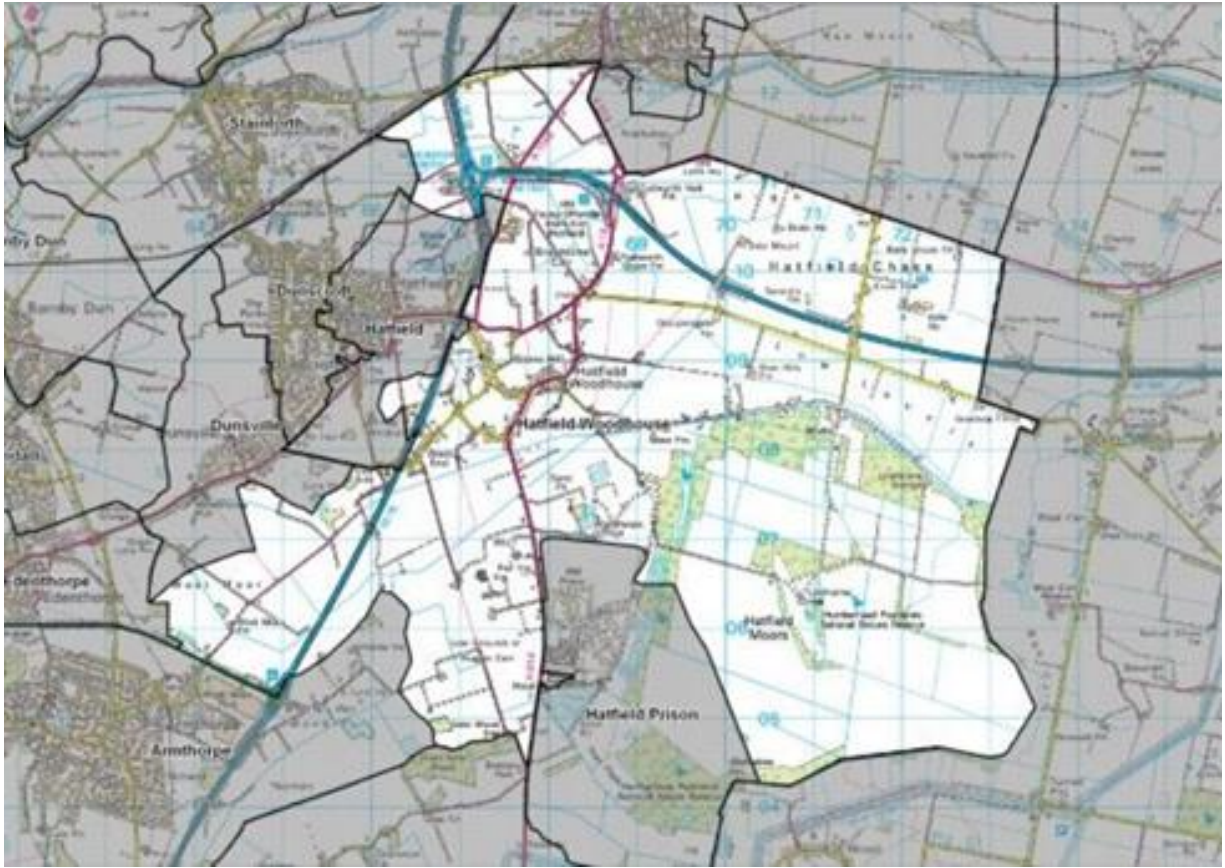
Empowering people in Doncaster to live better, healthier, and happier lives.

www.welldoncaster.uk

Well Doncaster
**Community
Wealth Builder**

Well Doncaster
Be Well

 **City of
Doncaster
Council**



This Report

This report focuses on the community of Hatfield Woodhouse, part of the Hatfield Ward in the East of the City. The report begins with a one-page summary outlining key information and priorities. This document shows the initial conversations with communities, including ward members, community organisations, faith groups, residents and other organisations who work in the area. Communities' knowledge of their own areas enables them to identify their strengths and the assets on which they can build on. This document is shared with the intention of supporting those conversations and sharing information that might not be readily available to local people.

Where specific data for Hatfield Woodhouse is unavailable, data for the Hatfield Ward has been used. Data for Hatfield East has also been used which includes Hatfield Woodhouse.

Contents

This Report.....	3
One Page Summary	7
Key Health Priorities	8
Assets	8
Asset Maps	8
Assets in the Community	12
Community Investment.....	13
Ward Members.....	14
Health and Wealth.....	15
Wealth Inequalities	16
Fuel Poverty	16
Employment	18
Citizens Advice Doncaster.....	20
Foodbank Data.....	20
Long-Term Health Conditions.....	20
Cause of Death.....	22
Smoking.....	22
Alcohol Consumption.....	23
Life Expectancy	23
Loneliness and Isolation	24
Child Development	25
Family Hubs	26
School Attainment.....	26
Pupil Lifestyle Survey	27
Physical Activity.....	27
Active Travel	28
Prevention and Control.....	28
Population Health Management	29
Community Information	30
Population	30
Demographics (Ethnicity, Language, and Religion)	31
Housing.....	31
Antisocial Behaviour	32
Vulnerable Victims.....	33
Community Insight	34

Appreciative Inquiry	34
Doncaster Talks	35
Locality Plan	36
Appendix.....	37
Well Doncaster Annual reports	37
Census data 2021	37
Public Health Data.....	37
Acorn profiles	38
Get Doncaster Moving survey	38
Mosaic data.....	39
Pupil Lifestyle Survey 2022	39
Power BI – Joint Strategic Needs Assessment	39

Hatfield Woodhouse



42.6% of the population in **top 3 occupation classifications**



47.8% of the population are **economically inactive**



High emergency admissions for **hip fractures** in persons **65 years and older**



16.5% of households experiencing **fuel poverty**



High proportion of **older adults** in the community



1 in 5 are classified as **disabled**

One Page Summary

Hatfield Woodhouse is part of the Hatfield ward, which consists of five communities: Dunscroft, Dunsville, Hatfield, Hatfield Woodhouse and Lindholme. It is located in the East of the City and is a small, semi-rural village about seven miles (11 km) from the centre of Doncaster. Hatfield Woodhouse has a population of approximately 980 (Census 2021).

The IMD score in Hatfield Woodhouse is 32.77, this indicates that Hatfield Woodhouse is ranked the 24th most deprived community in Doncaster (out of 88).

Hatfield Woodhouse has an ageing population with a large number of adults aged 50 years and above, and significantly lower prevalence of children and young people (Census 2021).

The leading cause of death in Hatfield East which covers Hatfield Woodhouse is deaths from all cancer, under 75 years. Deaths from stroke, all ages are also high in Hatfield East compared to England. Emergency hospital admissions for coronary heart disease and emergency hospital admissions for myocardial infarction (heart attack) are high in Hatfield East. Emergency hospital admissions for hip fracture in persons 65 years and over is also high compared to England, at 127.2 per 100 population. This may be attributed to the demographic and an ageing population.

16.5% of households are experiencing fuel poverty in Hatfield Woodhouse, presenting additional challenges to the older population. Most households consist of 3 bedrooms and 4 or more bedrooms, which is significantly higher than the national rate. In addition, the occupancy rating for properties in Hatfield Woodhouse is 62.5%. This implies that households are under-occupied, having more bedrooms than required, and may increase fuel poverty rates.

Unemployment rates in Hatfield Woodhouse are significantly high at 73.2%, compared to England (61.1%) and Doncaster (61.6%). There is also a high proportion of economically inactive people (47.8%) in Hatfield Woodhouse, compared to England (39.1%) and Doncaster (41.7%), and lower rates of economically active individuals (50.5%), compared to England (57.4%) and Doncaster (54.9%). This may be linked to the ageing demographic within the community, and higher rates of retired individuals.

In Hatfield East the number of people who reported having a limiting long-term illness or disability (20.8%) is significantly higher than in England (17.6%). 19.1% of residents in Hatfield Woodhouse classify as being Disabled under the Equality Act, which is higher than the England rate of 17.3%.

Key Health Priorities

- An ageing population with a higher proportion of older, economically inactive adults.
- 16.5% of households are experiencing fuel poverty, with larger properties and high rates of under-occupied homes.
- High rates of emergency hospital admissions for hip fracture in persons 65 years and over are also high, at 127.2 per 100 population.
- 1 in 5 adults in Hatfield Woodhouse are classified as being Disabled under the Equality Act.

Assets

Well Doncaster uses a community-centred approach which allows investment in supporting, working with, and empowering communities to facilitate a healthy community. The voice and role of our communities and taking a strength/assets-based approach to work with individuals, families and communities is crucial to the achievement of our overall vision. It is recognised that work is needed in the community to expand the understanding of who, how and what is accessed in the area. Greater knowledge of the identity of each community/ward will allow a more appropriate and effective response to community needs. Hatfield Woodhouse remains a priority area for the East locality and ongoing work will continue to support it.

Asset Maps

The maps below show the different types of assets found across Hatfield Woodhouse. These have been separated into Business, Community, and Health assets. It should be noted that these maps are a starting point in understanding the community and that further work is needed amongst the community to understand all the assets and how they are used. These maps will be updated to highlight any changes.

Business Assets

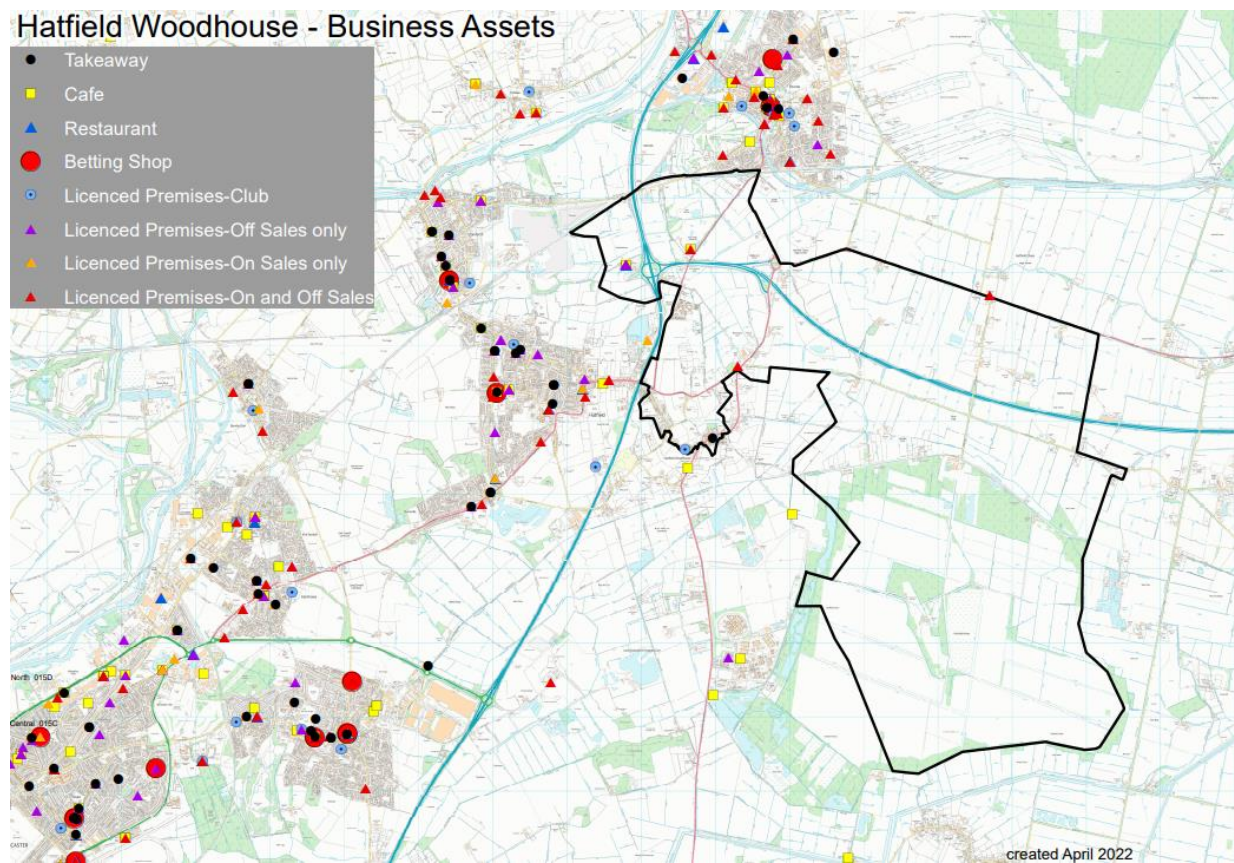


Figure 1. Business Assets

Community Assets

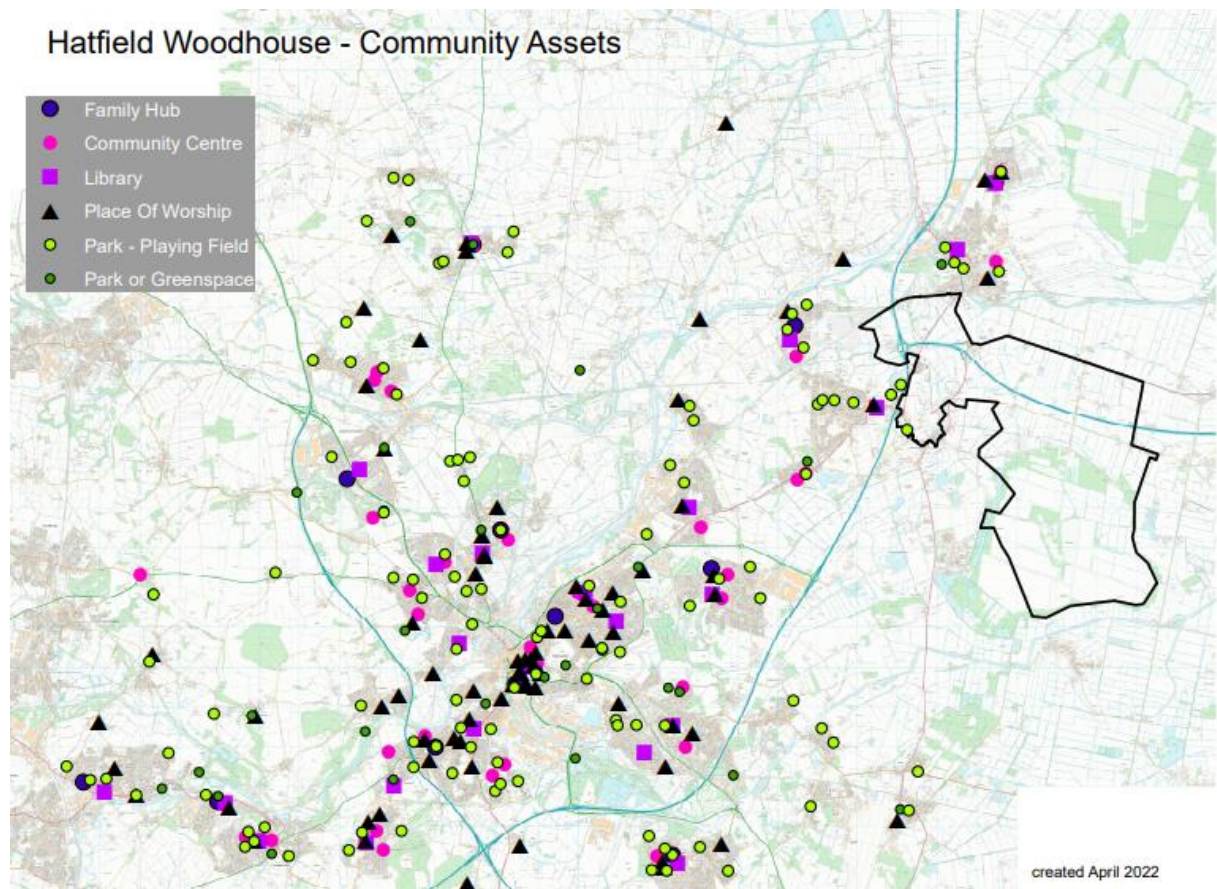


Figure 2. Community Assets

Health Assets

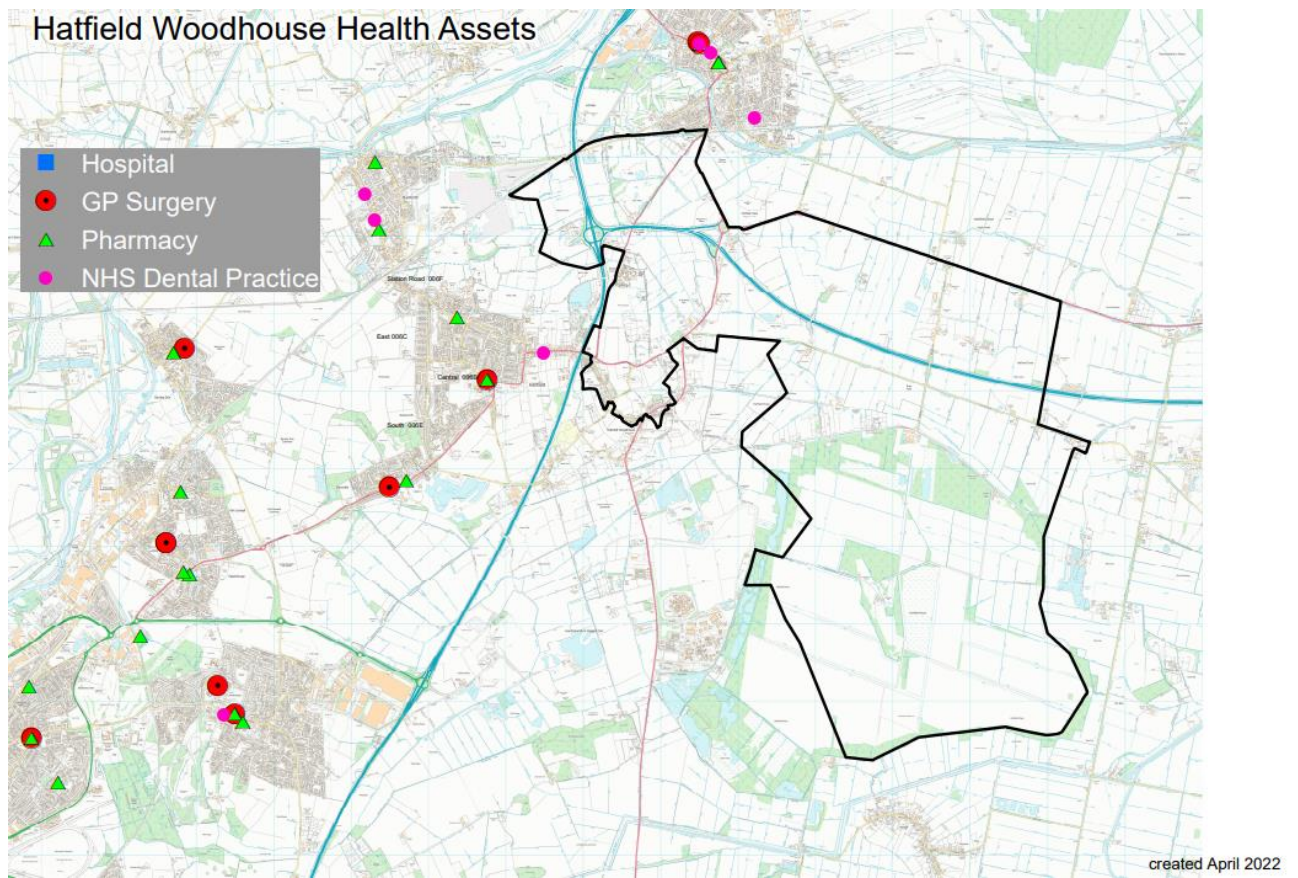
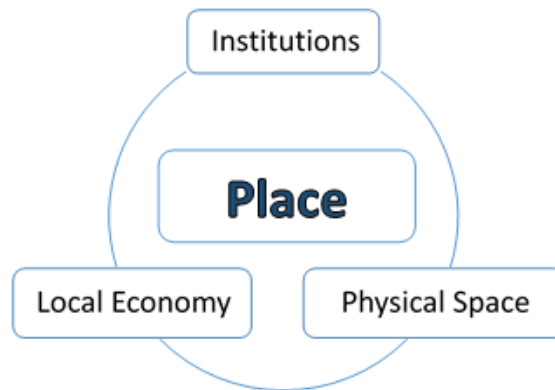


Figure 3. Health Assets

Assets in the Community

As part of a population health management approach, the following assets have been identified and themed around people and places:



Institutions (Schools/colleges etc.)	Physical Space (Parks, car parks etc.)	Local Economy (Local profit businesses)
Schools/Education <ul style="list-style-type: none"> Hatfield Woodhouse Primary Religious <ul style="list-style-type: none"> Hatfield Woodhouse Methodist Chapel 	Parks/Green Spaces <ul style="list-style-type: none"> Village Hall Play Park Howville Avenue Play Park Hatfield Moors Nature Reserve Humberhead Peatlands National Nature Reserve Community Venues <ul style="list-style-type: none"> Hatfield Woodhouse Village Hall & Old People's Centre Residential <ul style="list-style-type: none"> Redhouse Park (Residential Park and Retirement Homes) 	<ul style="list-style-type: none"> Boston Park Farm Sunnybank Gardens & The Yorkshire Ice Cream Farm Vulcan Renewables The Grooming Parlour Pubs/Restaurants <ul style="list-style-type: none"> Hatfield Woodhouse Working Men's Club The Green Tree Inn Wood House Chinese Takeaway



Individuals (Key individuals in the community)	Associations (Local Groups/Clubs)	Stories (Good news stories)
<ul style="list-style-type: none"> • Ward Members • Hatfield Town Council Councillors <p>Community Leaders:</p> <ul style="list-style-type: none"> • Volunteers in VCFS Sector • Woodhouse Walking Group <p>Professionals:</p> <ul style="list-style-type: none"> • Well Doncaster Officer • Be Well Officer • CDC Communities Team • Police Community Support Officer 	<p>Hatfield Woodhouse Village Hall & Old People’s Centre</p> <ul style="list-style-type: none"> • Games Club • Yoga • Baby & Toddler Group • Brownies & Scouts <p>Hatfield Woodhouse Methodist Chapel</p> <ul style="list-style-type: none"> • Sugar Craft Art Class • Knit & Natter • Coffee Morning • Pilates <p>Hatfield Woodhouse Working Men’s Club</p> <ul style="list-style-type: none"> • Gardening Society 	<p>In April 2023, Hatfield Woodhouse Village Hall successfully received the Earth Day Grant from Well Doncaster’s Community Wealth Builder team. Children from the 47th Doncaster Brownies and KS2 pupils from Hatfield Woodhouse Primary School worked together on the collaborative project that saw the installation of a Bug and Bee Hotel and the plating of 500 native wildflower plants, both at Hatfield Woodhouse Village Hall. This has given the children valuable DIY and gardening skills, whilst enhancing the community space.</p>

Community Investment

The East locality has received £775,000 of community investment through Well Doncaster. Of this, £206,000 has been directly invested in the Hatfield ward, with over £15,000 invested in Hatfield Woodhouse. The investment has contributed towards the utilisation of community assets, Children & Young People provision and supporting physical activity, followed by enabling positive lifestyle choices and an increasing sense of community spirit.

Ward Members

The Hatfield ward has three ward Councillors.

Contact
for the



Councillor Duncan
Anderson

Hatfield
Labour



Councillor Linda
Curran

Hatfield
Labour



Councillor Glynis
Smith

Hatfield
Labour

details
Ward

Councillors are as follows:

Duncan.Anderson@doncaster.gov.uk

Linda.Curran@doncaster.gov.uk

Glynis.Smith@doncaster.gov.uk

Hatfield Woodhouse also has several serving Town Councillors from Hatfield Town Council.

Health and Wealth

Health inequalities are avoidable differences across the population and between different groups within society. Health inequalities arise from the conditions in which we live, work and play. These conditions influence our opportunities for good health, how we think, feel and act, therefore shaping our health and wellbeing.

Evidence shows that people living in our most deprived areas face the worst health inequalities in relation to health access, experiences, and outcomes. Deprivation covers a range of issues and refers to unmet needs caused by a lack of resources, including but not limited to finances, housing, and education. It is measured in different ways including the Indices of Multiple Deprivation (IMD). Doncaster is within the 10% most deprived communities in England.

The overall deprivation map from 2019 below shows deprivation across the city by Lower Super Output Areas (LSOAs). Areas in red are those in the top IMD decile, which means that they have been identified as being most deprived. Hatfield Woodhouse has been identified on the map.

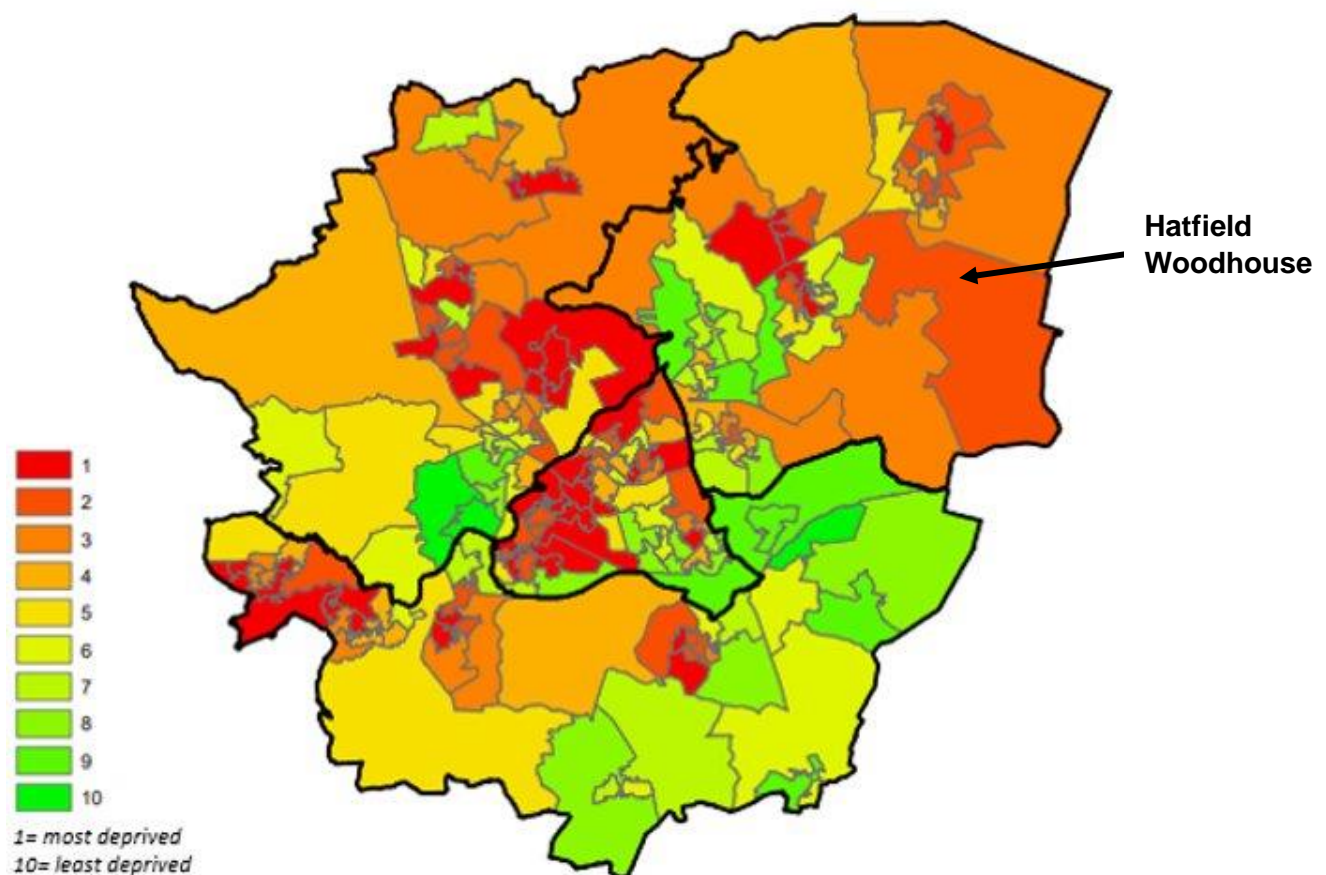


Figure 4. Doncaster borough deprivation by LSOA, 2019

The map below shows the differences in deprivation in the Hatfield Ward, based on national quintiles of the Index of Multiple Deprivation 2010 by LSOA. It contains five levels of deprivation. The darkest colour represents the most deprived areas.

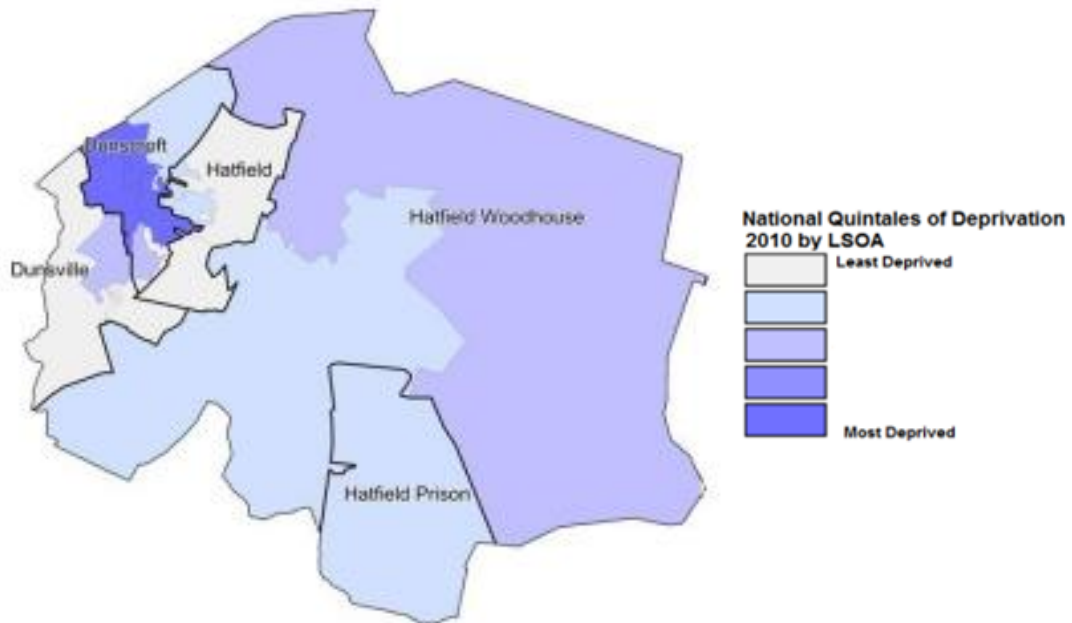


Figure 5. National Quintales of Deprivation for Hatfield ward

Wealth Inequalities

The Index of multiple deprivation score in Hatfield ward is 26.5, with 13.6% of the population living in poverty, this is significantly higher than Doncaster and England at 16.6% and 12.9% respectively. This trend continues in the percentage of children living in poverty which is at 20.2% for the ward, significantly higher than England's 17.1%. Although the older people in poverty index (IDAOPI) is not significantly different to Doncaster and England, at 13.7%, there are a significant amount of older people living alone in the ward, with the percentage of people aged 65 and over who are living alone at 24.4%.

The IMD score in Hatfield Woodhouse is 32.77, this indicates that Hatfield Woodhouse is ranked the 24th most deprived community in Doncaster (out of 88) Within the Hatfield ward, Hatfield Woodhouse has the 2nd highest level of deprivation across the Hatfield ward, following Dunscroft at 35.99.

Fuel Poverty

Fuel poverty is directly linked to energy efficiency, energy prices and household income. Fuel poverty is distinct from general poverty: not all poor households are fuel-poor, and some households would not normally be considered poor but could be

pushed into fuel poverty if they have high energy costs. Evidence shows that living in cold homes is associated with poor health outcomes and an increased risk of morbidity and mortality for all age groups; furthermore, studies have shown that more than one in five (21.5%) excess winter deaths in England and Wales are attributable to the coldest quarter of housing. Cold homes have also been associated with lower strength and dexterity and exacerbated symptoms of arthritis, which can increase the risk of falls and unintentional injury. This is particularly poignant within communities that have an ageing population, including Hatfield Woodhouse.

Modelled estimates of the proportion of households in fuel poverty show that 18.8% of households in Doncaster are living in fuel poverty. This is higher than the Hatfield ward, at 16.5%. At LSOA level, data shows that 16.5% of households are experiencing fuel poverty in Hatfield Woodhouse.

The map below outlines fuel poverty levels across the city of Doncaster, with darker colours indicating higher deprivation.

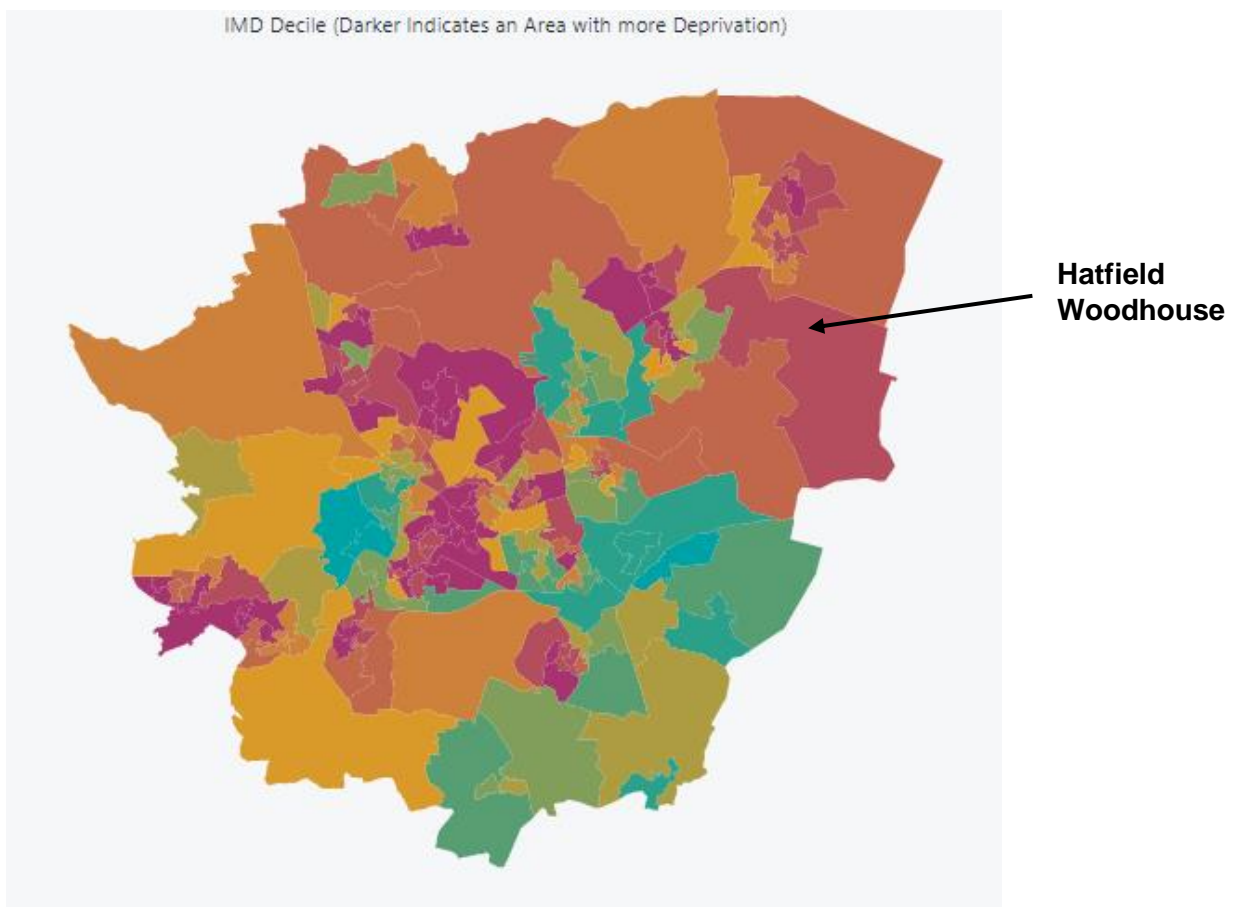


Figure 6. *IMD Deciles across the City of Doncaster*

Employment

Hatfield Woodhouse has a higher proportion of economically inactive people (47.8%) than England (39.1%) and Doncaster (41.7%). Alongside this, there is lower rates of economically active individuals currently in employment within Hatfield Woodhouse (50.5%) than in England (57.4%) and Doncaster (54.9%).

Economically active adults are those aged 16 years and over who are:

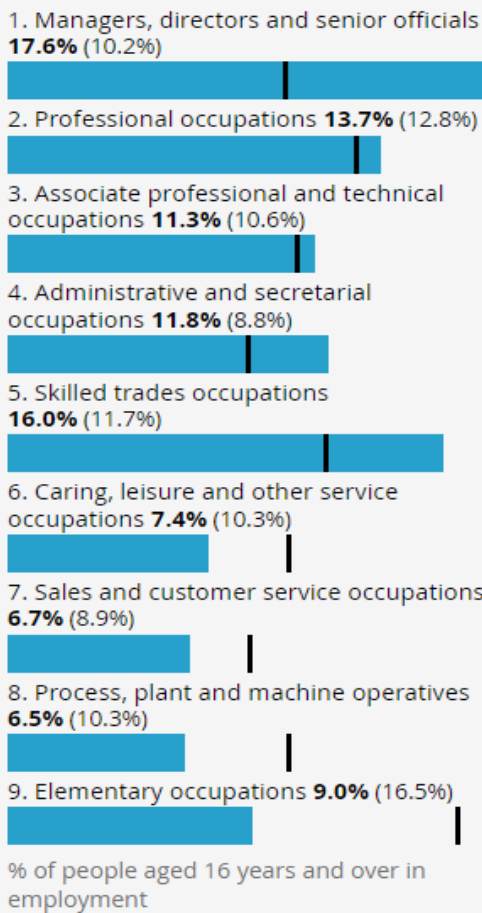
- in employment (an employee or self-employed)
- unemployed, but looking for work and could start within two weeks.
- unemployed, but waiting to start a job that had been offered and accepted.

Economically inactive are those aged 16 years and above who did not have a job, and had not looked for work, this can include retired individuals and students.

The number of individuals who are not in employment: not worked in the last 12 months in Hatfield Woodhouse is significantly high at 73.2%, compared to England (61.1%) and Doncaster (61.6%). These statistics may be linked to the ageing demographic within the community, and higher rates of retired individuals. Those that are engaged in employment in Hatfield Woodhouse often occupy higher skilled professions such as managers, directors and senior officials, professional occupations, and skilled trades occupations. This can be seen in the infographics below which compared Hatfield Woodhouse to Doncaster.

Occupation

Selected area | (Doncaster)



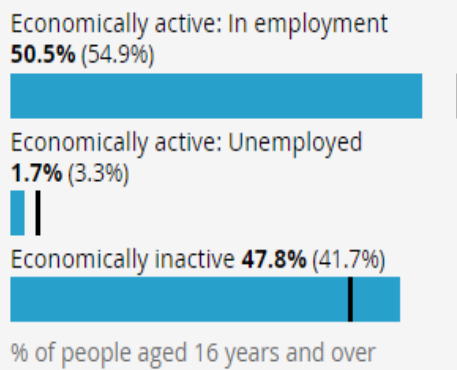
Employment history

Selected area | (Doncaster)

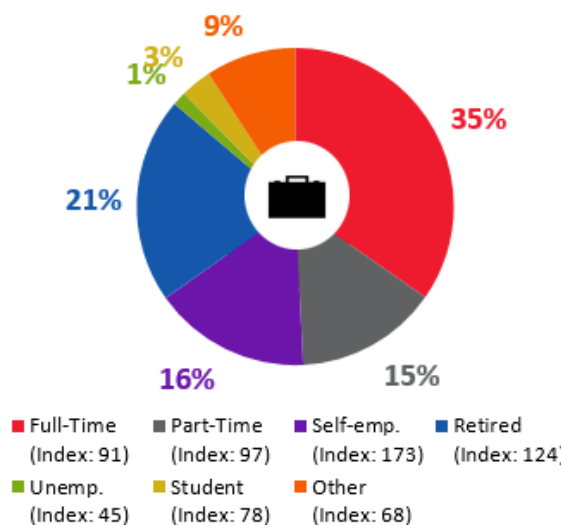


Economic activity status

Selected area | (Doncaster)



EMPLOYMENT



INCOME

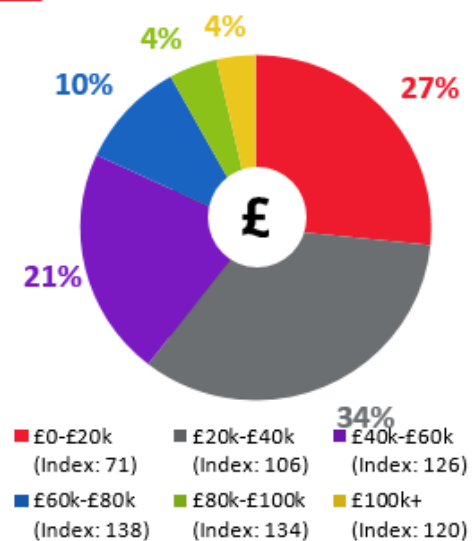


Figure 7. Occupation, Employment History and Economic activity status in Hatfield Woodhouse (Census 2021)

As illustrated by the charts below, approximately one quarter (27%) of Hatfield Woodhouse residents live in households with an income of less than £20,000. 34% of the household have an income between £20k-40k which is in line with the Doncaster average (Acorn 2021).

Figure 8. Employment and Income Status (Acorn 2021)

Citizens Advice Doncaster

Citizens Advice Doncaster is an independent, local charity and a member of the Citizens Advice network. They provide free advice and support to meet the needs of communities. This includes advice on a range of problems, such as work, debt, benefits, immigration, housing and more.

In the Fiscal Year 2023/24 (which includes data from Quarter 1 and Quarter 2) data shows that 130 clients were supported in the Hatfield ward across 87 postcodes. Hatfield Woodhouse residents contributed to less than 5% of the total figure. The leading issue for requiring support was dealing with debt repayments.

Foodbank Data

There are 5 active foodbanks in the East locality of Doncaster. 2 are accessible to Hatfield Woodhouse residents; Cambeth Community Pantry CiC (located in Dunscroft) and DN7 Foodbank (located in Stainforth). On average, these 2 foodbanks combined support approximately 150 households per month. The main reason for residents requiring food support is Cost-of-Living, followed by Debt, Low Income, Benefit Changes, Benefit Delays and Sickness.

Long-Term Health Conditions

In Hatfield East, the number of people who reported having a limiting long-term illness or disability is significantly higher than the England rate, at 20.8% and 17.6% respectively (Office for Health Improvement & Disparities 2023). In Hatfield Woodhouse 19.1% of residents classify as being Disabled under the Equality Act, this is higher than the England rate of 17.3% but lower than the Doncaster rate of 20.3%. Alongside this, there is a higher prevalence of residents who describe their health as “very bad”, “bad” or “fair”, coupled with significantly lower rates who report being in “very good health”. This is illustrated in the infographics below.

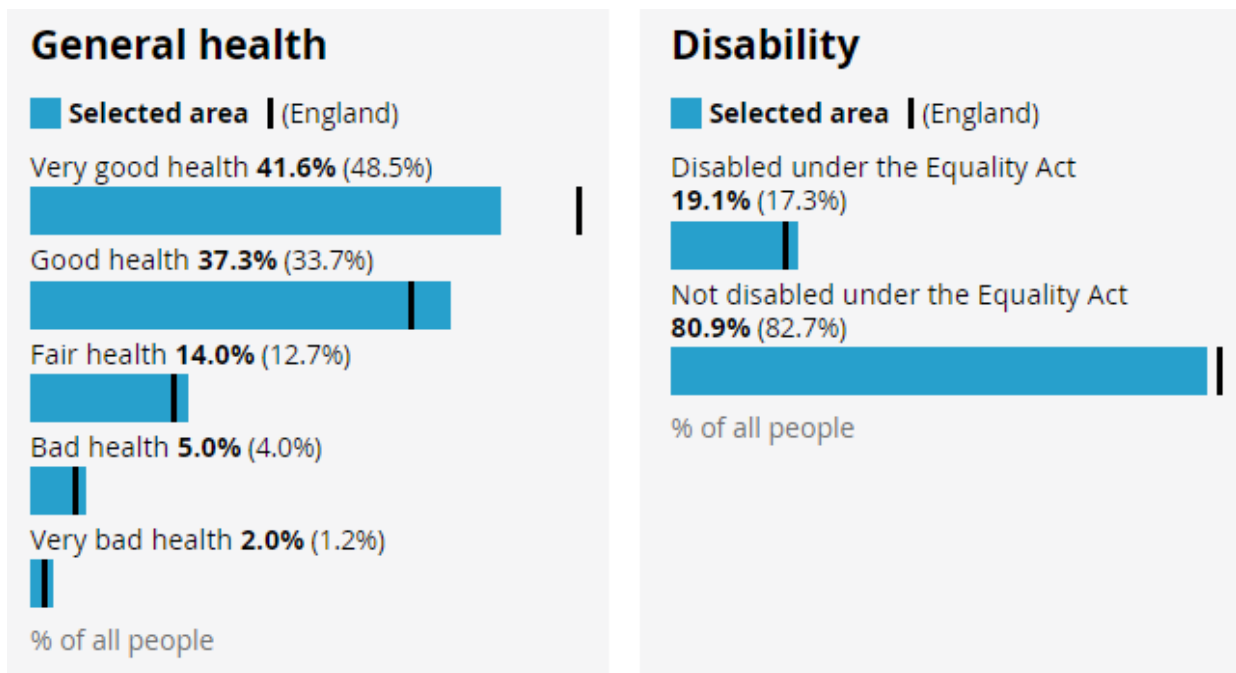


Figure 9. Health status in Hatfield Woodhouse (Census 2021)

Emergency hospital admissions for coronary heart disease (118.1%), and emergency hospital admissions for myocardial infarction (heart attack) (115.9%) are high in Hatfield East. Emergency hospital admissions for hip fracture in persons 65 years and over is also higher compared to England. This may be attributed to the demographic, housing, and lack of health assets.

The infographic below shows the percentage of the population in Hatfield Woodhouse with a diagnosis of different health conditions.

HEALTH (EVER DIAGNOSED WITH)

HEART & LUNGS



2.1%

Index: 100

Coronary Heart Disease



10.0%

Index: 85

Asthma



1.8%

Index: 80

Chronic Bronchitis



0.7%

Index: 71

Emphysema



17.0%

Index: 101

Cholesterol (taking medication for)

OTHER



19.0%

Index: 98

High Blood Pressure



1.9%

Index: 89

Stroke



24.8%

Index: 85

Obese (BMI>30)



5.5%

Index: 88

Diabetes



1.6%

Index: 85

Any Liver Condition

Figure 10. Prevalence of health conditions in Hatfield Woodhouse (Acorn 2021)

Cause of Death

The leading cause of death in Hatfield East which covers Hatfield Woodhouse is deaths from all cancer, under 75 years, at 113.8 per 100. Deaths from stroke, all ages are also higher in Hatfield East compared to England at 116.0 per 100 and 100, respectively.

Smoking

11.2% of the population in Hatfield Woodhouse are likely to be current cigarette smokers. This is 38% lower compared to other areas. Circa 2% smoke 20+ cigarettes per day, which is 50% below the Doncaster rate. Smoking status as self-reported by patients during registration at a GP practice is available for the 2 practices within the Hatfield ward: Dunsville Medical Centre and Hatfield Health Centre. Both practices show a lower rate of patients over the age of 15 who smoke compared to Doncaster (17.96%), with Dunsville Medical Centre at 10.29% and Hatfield Health Centre at 12.23%. Emergency hospital admissions for COPD in Hatfield East (76.9 per 100) is lower than both England (100) and Doncaster (124.2)

Alcohol Consumption

11.9% of the population consumes > 5 alcoholic drinks per day. Alcohol-specific admissions per 1000 population for the period April 2016 – July 2023 show that Hatfield Woodhouse had an incidence rate of 36.36 / 1000 which is lower than the Doncaster rate of 43.67. This can be seen in the infographic below.

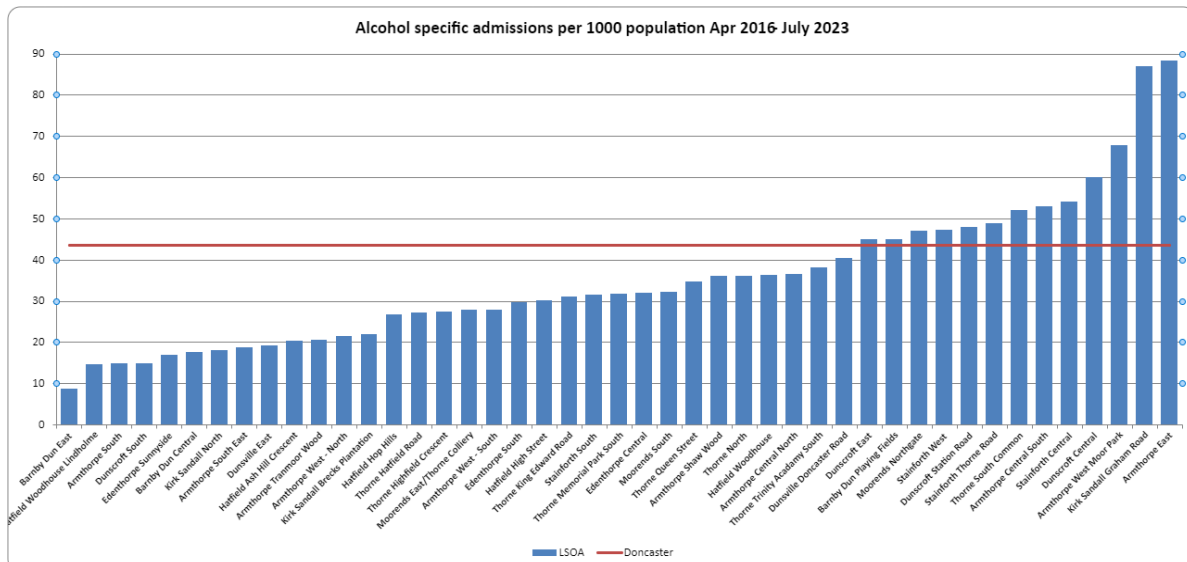


Figure 11. Alcohol specific admissions for East locality

Life Expectancy

Life expectancy in Hatfield East is 80.3 years in men which is higher than in Doncaster (77.9 years) and England (79.5 years). Life expectancy for females in Hatfield East (81.9 years) is similar to Doncaster (81.3 years) but lower than England (83.2 years). Both males and females in Hatfield East have a higher life expectancy than those living nearby in Hatfield West, by +3.8 years for males and +1.1 years for females.

Figure 15 and 16 below shows life expectancy at a ward level across the city of Doncaster for males and females.

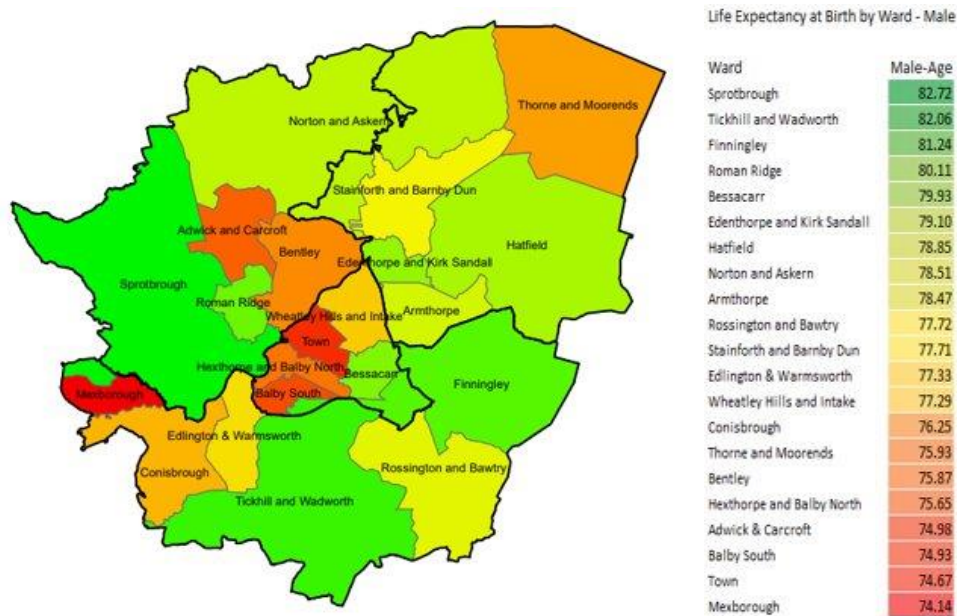


Figure 12. Life expectancy at birth by ward - Male

13.

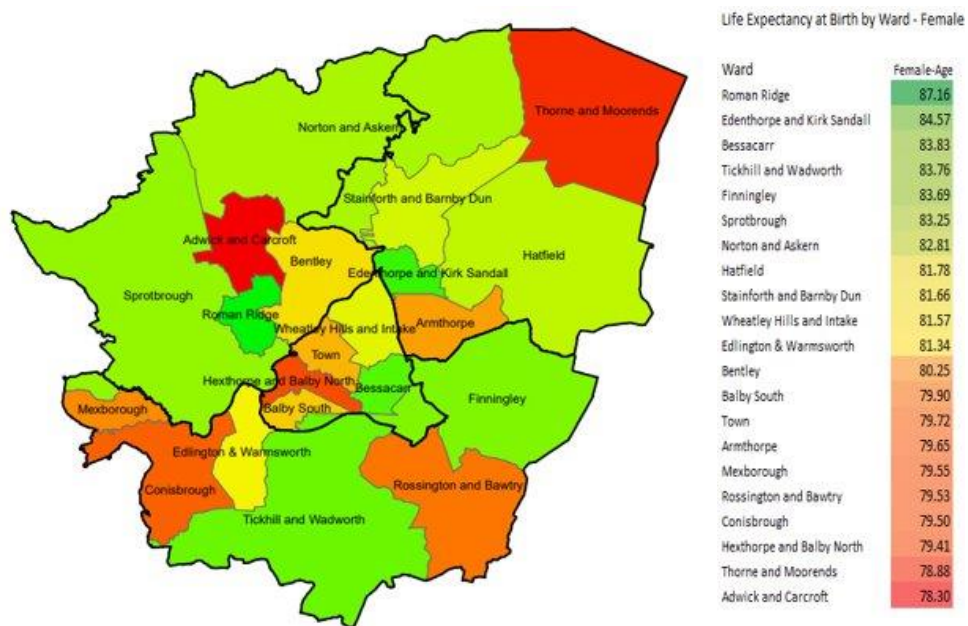


Figure Life

expectancy at birth by ward - Female

Loneliness and Isolation

Just over a quarter of people live alone in Hatfield Woodhouse (28.2%) compared to 31% across Doncaster and 30.1% in England. Alongside this, the highest proportion of residents in Hatfield Woodhouse are aged 50 and above, with high rates of pension-age adults and lower numbers of families with children and young people. Whilst this does not indicate loneliness and/or isolation, it is an indicator to be considered alongside local intelligence.

Within Hatfield Woodhouse, it is estimated that 6.4% of the population have clinical depression, 4.8% reported feeling depressed in the past 4 weeks, 15.5% report poor general health, 11.2% do not report general happiness and 6.6% feel no sense of worth (Acorn 2021). This can be seen in the infographic below.

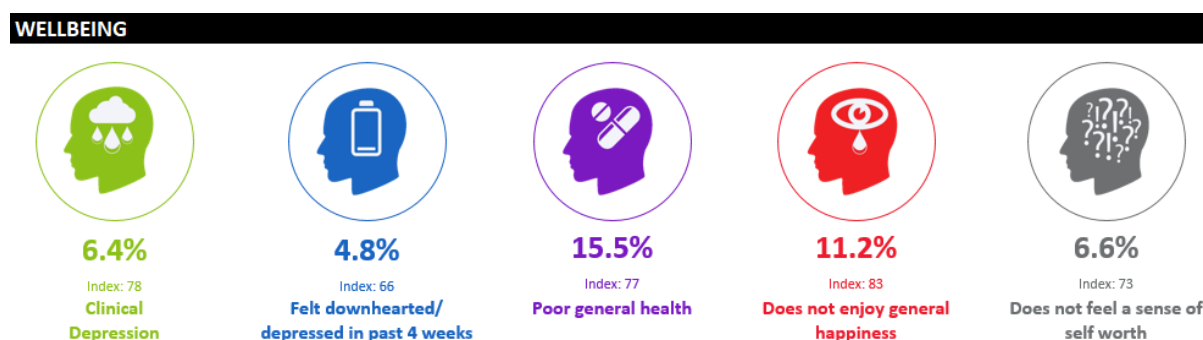


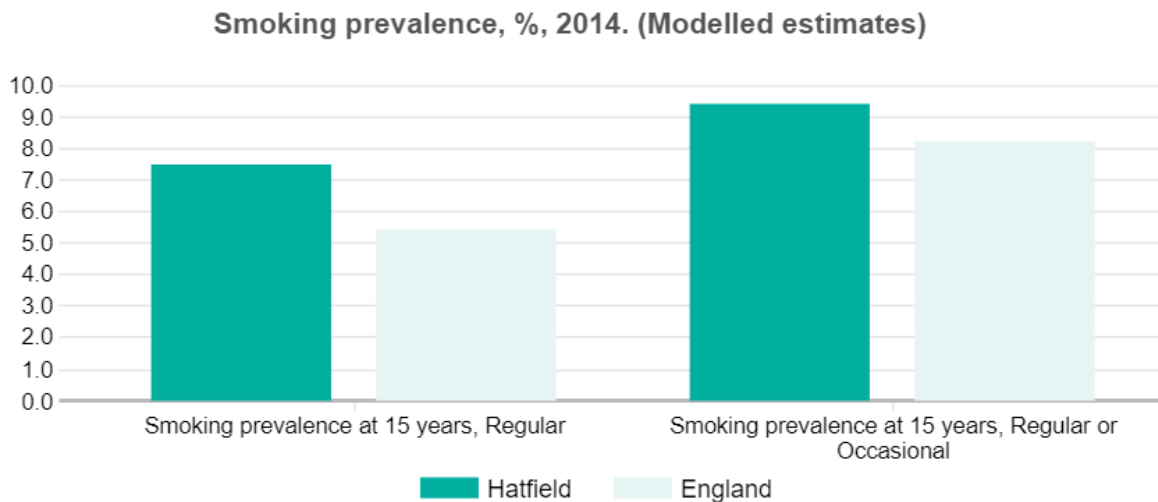
Figure 14. Wellbeing of Hatfield Woodhouse residents

Child Development

Growing up in poverty damages children's health and well-being, adversely affecting their future health and life chances as adults. Ensuring a good environment in childhood, especially early childhood, is important. A considerable body of evidence links adverse childhood circumstances to poor child health outcomes and future adult ill health. The Income Deprivation Affecting Children Index (IDACI) measures the proportion of all children aged 0 to 15 living in income deprived families. In the Hatfield ward, 20.1% of children are classed as living in child poverty, this is lower than Doncaster at 22.7%, but significantly higher than England (17.1%). Data shows that the measure of children living in poverty in Hatfield East is over half that of children living in nearby Hatfield West at 12.2% and 24.6% respectively.

Data shows that 31.6% of children are overweight or obese at reception age in Hatfield East. This is significantly higher than the England rate (22.6%). This further increases to 40.0% in Year 6 which is also higher than in Doncaster (38.2%) and England (35.8%).

Additionally, 24% of Year 8 and Year 10 pupils reported that they have consumed alcohol in the past week, an increase of 4% from 2020 and slightly higher than the Doncaster rate of 22%, whilst 11% have tried cigarettes or smoking (FSM 2021). Data from the Office for National Statistics (2020) highlights smoking prevalence at age 15 years (regular and regular or occasional) is higher in the Hatfield ward compared to England, as shown in the table below. 13% of Year 8 and Year 10 pupils reported that they have been offered cannabis and 10% have been offered other drugs (FSM 2021).



Source: Department of Geography, University of Portsmouth and Department of Geography and Environment, University of Southampton; Mid year population estimates, Office for National Statistics.

Figure 15. Smoking prevalence at 15 years in Hatfield ward

Family Hubs

Doncaster Family Hubs are the ‘place to go’ for families. They work with other providers to offer a range of activities, services and information for families and welcome families with children of all ages from conception through childhood to adolescence. There are 3 family hubs within the East locality, these are located in Armthorpe, Moorends and Stainforth. Family Hub membership in the Hatfield ward is lower than the Doncaster total at 73% and 83% respectively.

Part of the role of Doncaster Family Hubs is to provide support to families accessing two-year-old funding (a government scheme funded entitlement to childcare). The number of eligible children living in the Hatfield ward taking up their funding entitlement to Two Year Funding is 46. The total number of open families that are working with family hub services is 5. The total number of children aged under 5 years who are receiving targeted support with their development is 18. These statistics are similar to neighbouring wards in the East locality

School Attainment

18 children in Hatfield Woodhouse have been recorded as receiving Elective Home Education and 2 are known to be missing education (City of Doncaster Council 2023). This is a high proportion given the limited number of children and young people within the population.

Elective home education is a term used to describe a choice by parents to provide education for their children at home – or at home in some other way which they choose – instead of sending them to school full-time.

Pupil Lifestyle Survey

The Pupil Lifestyle Survey is conducted by the City of Doncaster Council to provide valuable data on children and young people's health-related behaviour, through an anonymous school-based questionnaire. Data from the survey has provided a set of Doncaster-wide figures at key points in children and young people's development; KS2, 3 and 4. 208 pupils participated in the Hatfield ward, consisting of children in Year 4 and Year 6. No Children from KS4 within the Hatfield ward participated. It is important to note that the Pupil Lifestyle Survey is self-reported and was not completed by all the schools.

The Hatfield ward ranked the lowest across the city of Doncaster for visits to the dentist within the last 12 months, at only 27% compared to the Doncaster rate of 45%.

15% claimed to consume takeaway food most or every day (vs 15% across Doncaster). However, daily fruit consumption is 64%, lower than Doncaster (66%).

85% of participants reported that they get love and support at home, this was amongst the highest figures, and higher than the Doncaster rate of 80%. Similarly, 90% of participants reported feeling safe at home, higher than the Doncaster rate of 89%.

The Hatfield ward ranked amongst the highest for feeling able to get involved in the community (outside of school) at 74%, this is higher than Doncaster at 62%.

Physical Activity

It is known that Doncaster has more physically inactive adults, and fewer physically active adults than the national average. 28.9% of adults in Doncaster are physically inactive, this is significantly higher than the England rate (23.4%). Alongside this, the number of physically active adults in Doncaster is lower than the England rate, at 59.3% and 65.9% respectively.

The following map shows where there are high numbers of inactive households. Data is mapped to Lower Super Output Areas (LSOA) however, wards are shown and labelled for orientation. This data has been matched to the number of children and young people living in deprived and inactive households. People living in income deprivation means not only people living on social benefits but also in low-income and/or precarious work. Hatfield Woodhouse has a lower number of active households when compared to the other areas in Doncaster, this may be attributed to the ageing population within the community as it is known that people become less physically active as they age (Department for Digital, Culture, Media and Sport 2022).

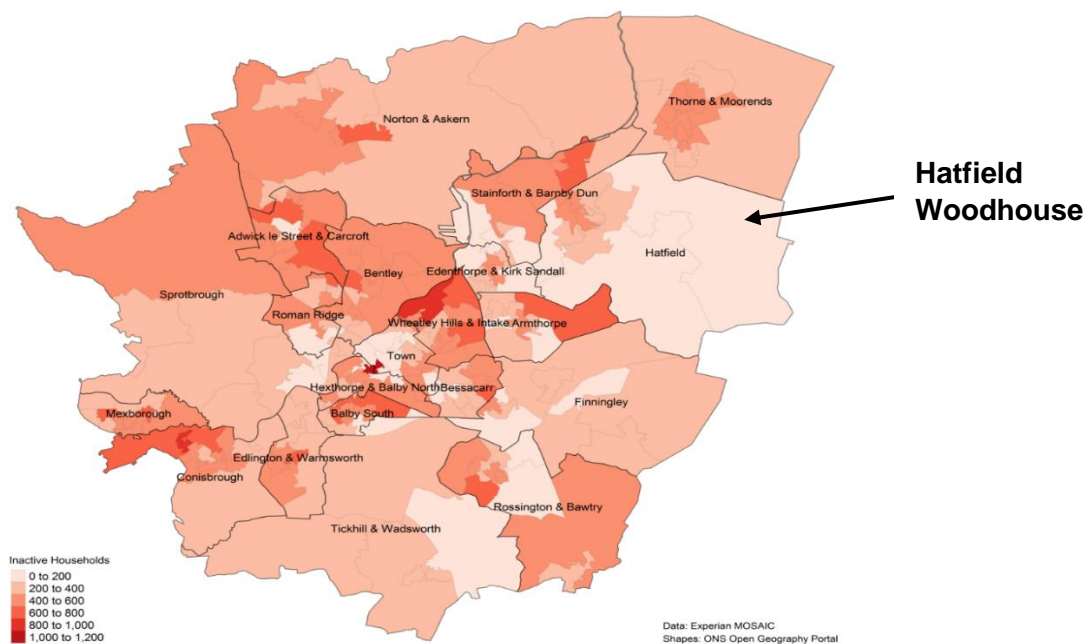


Figure 16. Mosaic map of household physical activity levels in Doncaster.

Additionally, only 51% of children reported partaking in exercise that shows physical signs, this is lower than the Doncaster rate of 56% and again ranked amongst the lowest in Doncaster.

Active Travel

Census data (2021) shows that the majority of residents aged 16 years and over in employment in Hatfield Woodhouse work mainly from home (26.6%), this is significantly higher than the Doncaster rate of 18.5%. 23.5% of residents in Hatfield Woodhouse live less than 10km to a place of work, this is almost half the Doncaster rate of 41.7%. The leading method of travel to the workplace is driving a car or van (62.4%). The number of residents in Hatfield Woodhouse that travel by active travel modes such as bicycle or walking (3.2%) is lower than the England (9.7%) and Doncaster (8.9%) rate, however, fits in line with further distances to travel.

Furthermore, the Pupil Lifestyle Survey showed that only 33% of children in the Hatfield ward reported walking to school, this is significantly lower than the Doncaster rate of 47% and ranked amongst the lowest across the city.

Prevention and Control

Up to and including 8 November 2023 in Hatfield East, the area covering Hatfield Woodhouse, 80.2% of residents have been vaccinated against COVID-19 with one

dose, 76.3% with two doses, and 62.7% with a 3rd dose or boosters (UK Health Security Agency 2023).

Population Health Management

COVID-19 has had a huge impact on communities, and it is vital to understand the impact and direction the pandemic has had on community organisation in the ward so that support can be offered, and work can be done to manage any gaps or risks associated with changes. To support with this, Well Doncaster officers undertake regular population health management insight with community organisations in Hatfield Woodhouse identifying their current status and needs, and work with each group to meet their goals. This is a living document and will be updated and adapted as needs are met and change. If you would like more details on this, please contact WellDoncaster@doncaster.gov.uk

Community Information

Population

980 (Census 2021)

The population of Hatfield Woodhouse on average has higher numbers of adults aged 50 years and above, with significantly lower prevalence of children and young people. This is demonstrated in the infographic below which outlines age composition.

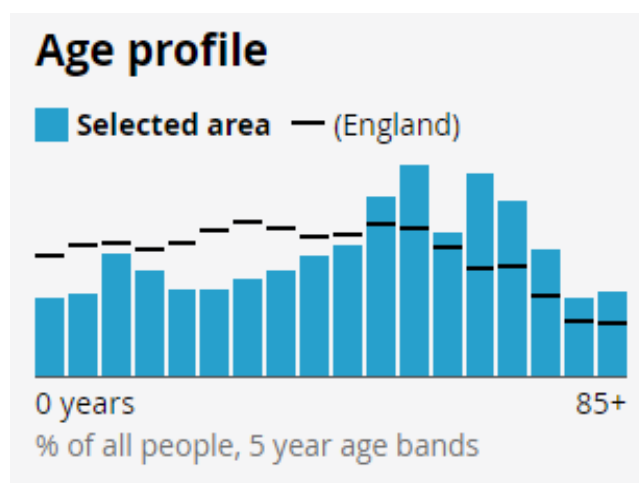


Figure 17. Age profile of Hatfield Woodhouse

Hatfield Woodhouse		England	
Age Band	Proportion	Age Band	Proportion
0 - 4 years	3.5%	0 - 4 years	5.4%
5 - 9 years	3.7%	5 - 9 years	5.9%
10 - 14 years	5.5%	10 - 14 years	6.0%
15 - 19 years	4.8%	15 - 19 years	5.7%
20 - 24 years	3.9%	20 - 24 years	6.0%
25 - 29 years	3.9%	25 - 29 years	6.6%
30 - 34 years	4.4%	30 - 34 years	7.0%
35 - 39 years	4.8%	35 - 39 years	6.7%
40 - 44 years	5.4%	40 - 44 years	6.3%
45 - 49 years	5.9%	45 - 49 years	6.4%
50 - 54 years	8.1%	50 - 54 years	6.9%
55 - 59 years	9.5%	55 - 59 years	6.7%
60 - 64 years	6.5%	60 - 64 years	5.8%
65 - 69 years	9.1%	65 - 69 years	4.9%
70 - 74 years	7.9%	70 - 74 years	5.0%
75 - 79 years	5.7%	75 - 79 years	3.6%
80 - 84 years	3.5%	80 - 84 years	2.5%
85 years and over	3.8%	85 years and over	2.4%

Figure 18. Age band comparison between Hatfield Woodhouse and England

Demographics (Ethnicity, Language, and Religion)

Hatfield Woodhouse is predominantly White British (99.2%), this is significantly higher than the England (81%) and Doncaster rate (93.1%). 0.5 % are Asian, Asian British or Asian Welsh, lower than Doncaster (2.9%) and England (9.6%) figures. Only 0.3% of residents are from mixed or other ethnic groups, this is also significantly lower than Doncaster (2.7%) and England (5.2%) figures. In addition, none of the population are Black, Black British or Black Welsh, Caribbean or African. The predominant language in Hatfield Woodhouse is English, with 99.6% using this as their main language.

59.2% of the population in Hatfield Woodhouse are of Christian religion, this is higher than both the England and Doncaster rates, at 46.3% and 50.9% respectively. 32.6% of residents are of no religion, and only 1.1% of residents classify as being Muslim, Jewish or other.

Housing

Housing conditions and the surrounding environment can have profound impacts upon residents' health and exacerbate health inequalities. The data below explores several variables to analyse the housing in Hatfield Woodhouse

There are 430 households in Hatfield Woodhouse. Data shows that the majority of housing is owned outright (56.9%), this is significantly higher than the England average at 32.5%, and the Doncaster average of 33.6% of households. The number of social rented properties is lower at 3.1%, which is significantly lower than Doncaster (17.0%) and England (17.1%).

The majority of properties are whole houses or bungalows (98.4%) with limited numbers of Flats, maisonettes, or apartments (0.7%), this shows a distinct difference to the national averages. Most properties consist of 3-bedroom and 4 or more-bedroom households, which is significantly higher than the national rate, as shown in the infographic below. In addition, the occupancy rating for properties in Hatfield Woodhouse is 62.5%, which is significantly higher than in England, at 35.6%. This implies that households are under-occupied, having more bedrooms than required.



Figure 19. Household statistics in Hatfield Woodhouse (Census 2021)

St Leger Homes is the main provider of Social Housing in Doncaster. St Leger homes own 100 properties in Hatfield. This comprises 60 bungalows and 60 houses. Those who rent these properties are predominantly aged 66 years and above.

The total rent arrears from those living in St Leger properties in Hatfield Woodhouse was £8538.00 in 2022/23, which increased from £6618.00 in 2021/22.

Antisocial Behaviour

Doncaster Stronger Communities Service looks to tackle all forms of anti-social behaviour, Hate Crimes and lower-level community safety within neighbourhoods. The East team is responsible for working in partnership with a range of agencies to deliver a joined-up approach that addresses needs identified within an area as well as more cross-cutting and complex work around community tensions and cohesion. The Hatfield Ward is one of five wards aligned to the Stronger Communities Team.

Data on the number of early interventions, ASB, hate crime and low-level crime issues identified and managed in the East locality show 1551 cases, of these 336 incidents were in the Hatfield ward. These are issues that are purely dealt with by Stronger Communities Officers prior to any other agency/multi-agency involvement in the true sense of early intervention thus preventing escalation and involvement from other, more costly services.

Antisocial behaviour incidents by ward highlighted Hatfield as having the highest rate in the East locality at 110. This is shown in the infographic below.

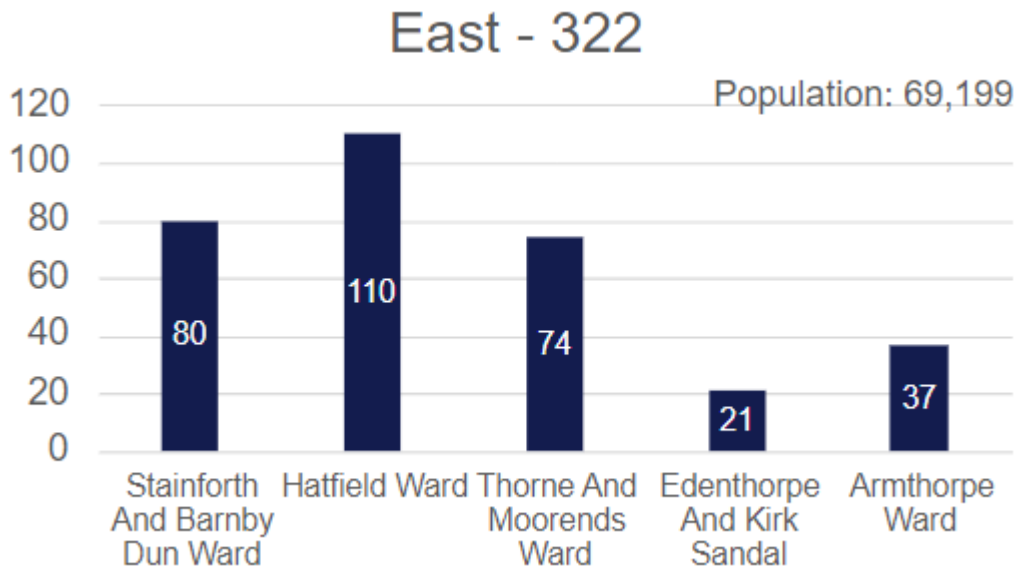


Figure 20. ASB Incidents by Ward (Partnership ASB ward level performance 2023/24)

Vulnerable Victims

The number of vulnerable victims for each Locality is also recorded. These figures represent individuals affected by repeat incidents of ASB. The below shows that the East locality had the highest rate of vulnerable individuals, at 82. However, of these only 8 were in the Hatfield ward. With highest figures being in Stainforth & Barnby Dun (36) and Thorne & Moorends (17).

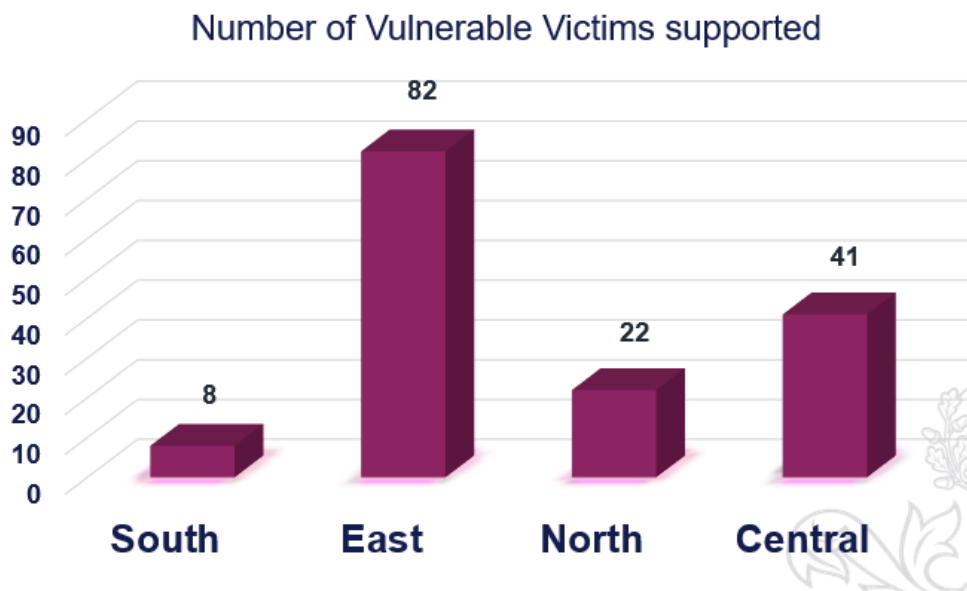


Figure 21. Vulnerable Victims by Locality (Partnership ASB ward level performance 2023/24)

Community Insight

Appreciative Inquiry

Appreciative Inquiry (AI) is a strength-based approach to understanding what is working well. It involves asking a series of structured questions which are analysed to identify themes that can be used to create positive change. The questions seek to understand past and present successes to help plan and create a bright and positive future. Used in a community setting, the process consists of four phases:

1. **Discovery Phase** – This will involve engagement with the residents of Hatfield Woodhouse to find out what is working well in the community. Responses will be themed to allow the priorities of the community to be established.
2. **Dream** – Residents and key stakeholders will be invited to attend an initial workshop to discuss what ideas they have for their community and how these will meet the priorities highlighted in the discovery phase.
3. **Design** – All attendees are invited back for a second workshop to develop an action plan for community action.
4. **Deliver** – A collaborative way of working and investing resources in working towards the actions from the design phase.

The Well Doncaster Team undertakes Appreciative Inquiry every year to ensure the voice of the community is heard and understood. Following the COVID-19 pandemic, this is more important than ever. As Armstrong (2020) demonstrates, through appropriate questioning, appreciative inquiry can help us move away from focusing on what is wrong, to capitalising on what is right to help strengthen and restructure communities. As communities look for the positives in their future, we hold up a mirror that shows them where the positive future lies –with them and their community.

In 2023, a full Appreciative Inquiry in Hatfield Woodhouse was undertaken. The table below outlines the 4 key themes identified during the Thematic Analysis.

Groups and Activities	<i>“The board game club is fantastic and lots of fun”</i> <i>“The garden club is good for getting people together”</i>
Community Assets	<i>“There is lots at the chapel for older people and people know each other and are friendly”</i>
Community Spirit	<i>“The more we do to get together the better the Village gets”</i>
Green Spaces	<i>“I like the close proximity to nature, public rights of way and the Natural England site. There are good cycling routes. Hatfield Woodhouse walking group is good as it brings people together”</i>

Doncaster Talks

In 2019, Doncaster Talks undertook insight across the City of Doncaster. Responses were separated into wards and thematically analysed.

Across the Hatfield ward, 111 responses were received which equates to 0.62% of the ward. This was amongst the lowest response rates per ward. An overview of responses can be seen below.

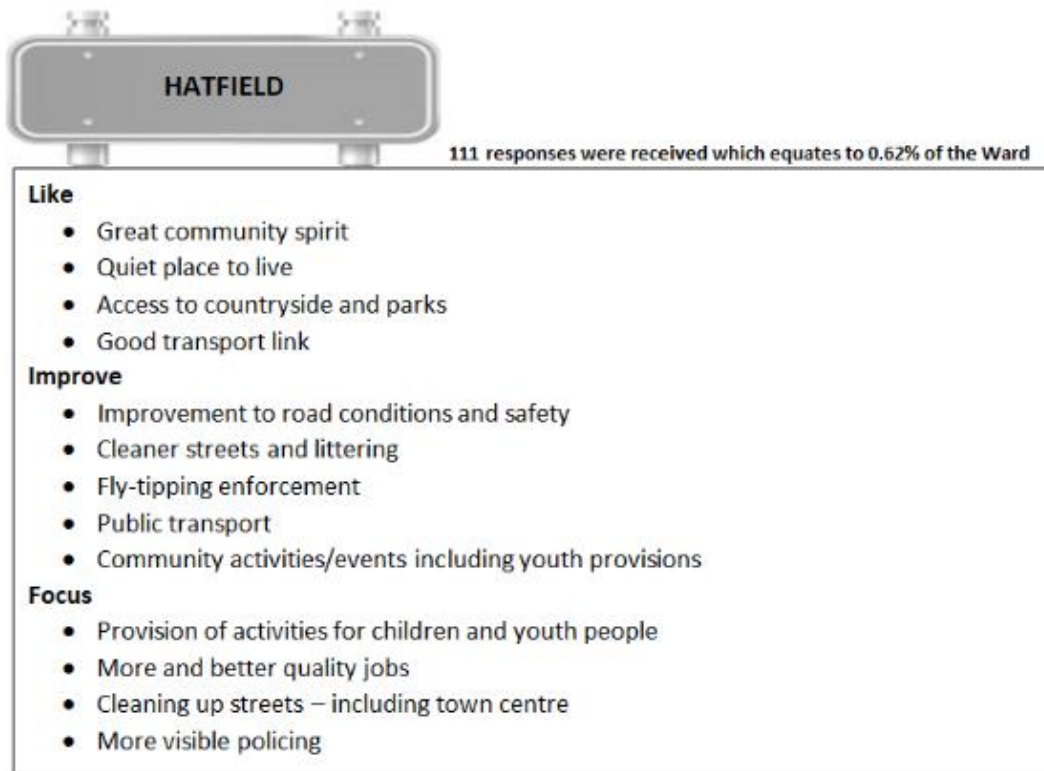


Figure 22. Hatfield ward responses

Locality Plan

Locality plans look at how we can together to strengthen communities and improve the lives and opportunities of residents living there.

The East Locality Plan has been developed in conjunction with residents and sets out what will be done to improve the community over the next 12 months. Communities were engaged with in a number of different ways:

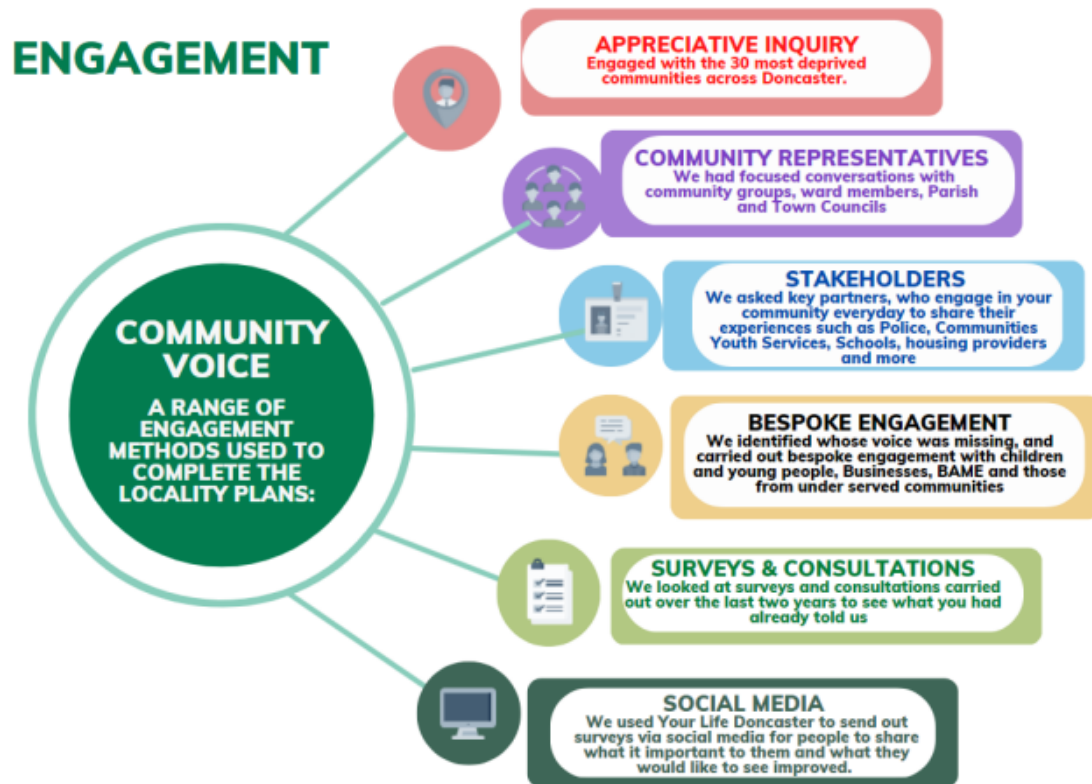


Figure 32. Community Voice engagement methods

The 2023-24 Locality Plan for the Central Communities outlines a set of priorities and can be viewed using the following link [East Locality Plan 2023/24](#)

Appendix

Well Doncaster Annual reports

Well Doncaster Approach: <https://youtu.be/e1RKOZoGI10>

More information about how Well Doncaster has been meeting outcomes and objectives can be found in past and present annual report:

<https://welldoncaster.wordpress.com>

Census data 2021

The census is undertaken by the Office for National Statistics every 10 years and gives us a picture of all the people and households in England and Wales.

[Build a custom area profile - Census 2021, ONS](#)

[Census Maps - Census 2021 data interactive, ONS](#)

Public Health Data

Fingertips

This is a new fingertips profile that uses data from Local Health an existing PHE data tool. Local Health is a collection of quality-assured health information presented for small geographical areas. By presenting data for small areas, Local Health provides evidence of inequalities within local areas. It supports targeted interventions to reduce such inequalities.

Local Health contains indicators related to:

- Population and demographic factors
- Wider determinants of health
- Health outcomes

It presents data for middle super output areas (MSOA), electoral wards, clinical commissioning groups (CCG), local authorities, and England as a whole.

Please note, that as the Local Health tool was designed to allow users to map small area data, a mapping option has not been provided in this profile.

<https://fingertips.phe.org.uk/profile/local-health/data#page/0>

[Local Health - Public Health England - Reports: get a dashboard on a custom area](#)

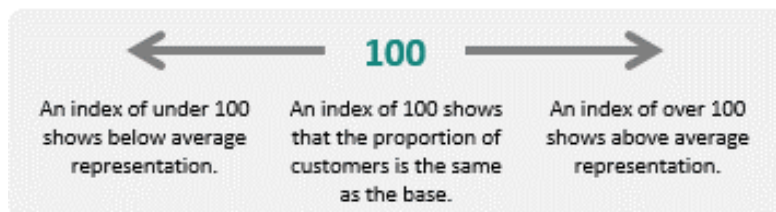
Acorn profiles

Wellbeing Acorn segments the population into 4 groups (Health Challenges; At Risk; Caution; Healthy) and 25 types describing the health and wellbeing attributes of each postcode across the country. By analysing significant social and health-related behaviour, it provides precise information and an in-depth understanding of upstream issues affected by current lifestyle traits

INTERPRETING THE REPORT

The Wellbeing Acorn profile report helps you understand the underlying demographics, lifestyle and health attributes of your customers and service users by comparing their Wellbeing Acorn profile to a base (e.g. UK population, area or other customer groups).

INDEX



The Wellbeing Acorn Profile contains 12 variables that are indicators of Disability or Infirmary in the population and 9 variables related to unhealthy Behaviours. The average score measured against the base profile of Yorkshire and the Humber is 100. A value above 100 indicates that the area population is overrepresented for this characteristic, below 100 the value is less than the average or under represented.

Get Doncaster Moving survey

<https://getdoncastermoving.org/uploads/dmbc-phase-1-summary-report-final.pdf?v=1558622409>

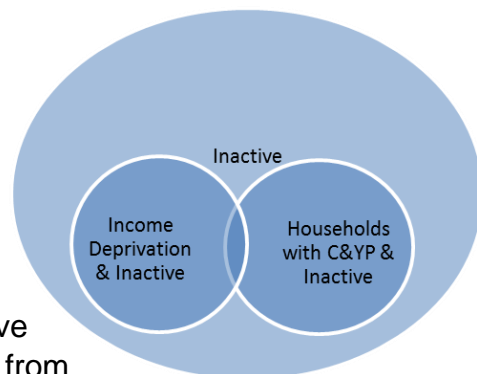
Mosaic data

Mosaic Public Sector classifies the UK population into one of 66 types and 15 groups through a detailed and accurate understanding of each citizen's demographics, lifestyles, behaviours and location.

The Physically Inactive Population of Doncaster

The MOSAIC types who “Do not exercise” and “Do not take part in Sport” were searched and three priority groups have been identified through work with strategic partners as part of the development of Doncaster’s Physical Activity Strategy. The three priority groups are:

- The Inactive
- Families with children and young people
- People living in income deprivation



These groups are cross-referenced against the inactivity list allowing for the identification of MOSAIC types which are both likely to be inactive and living in deprivation as well as inactive and from households with children and young people.

Link to the Get Doncaster Moving strategy; [Let's Get Moving! | Get Doncaster Moving](#)

Pupil Lifestyle Survey 2022

[Pupil Lifestyle Survey - Healthy Schools \(healthylearningdoncaster.co.uk\)](https://www.healthylearningdoncaster.co.uk)

Power BI – Joint Strategic Needs Assessment

The Joint Strategic Needs Assessment (JSNA) is a process that identifies the current and future health and wellbeing needs of a local population. The dashboards show information about the employment, health, and wellbeing of people in Doncaster. We use this information to inform our policies and strategies to improve the lives of everyone in the Doncaster area.

[Joint Strategic Needs Assessments - Team Doncaster](#)