

Moorends Community Profile Well Doncaster



Well Doncaster

Community Led Health and Wealth

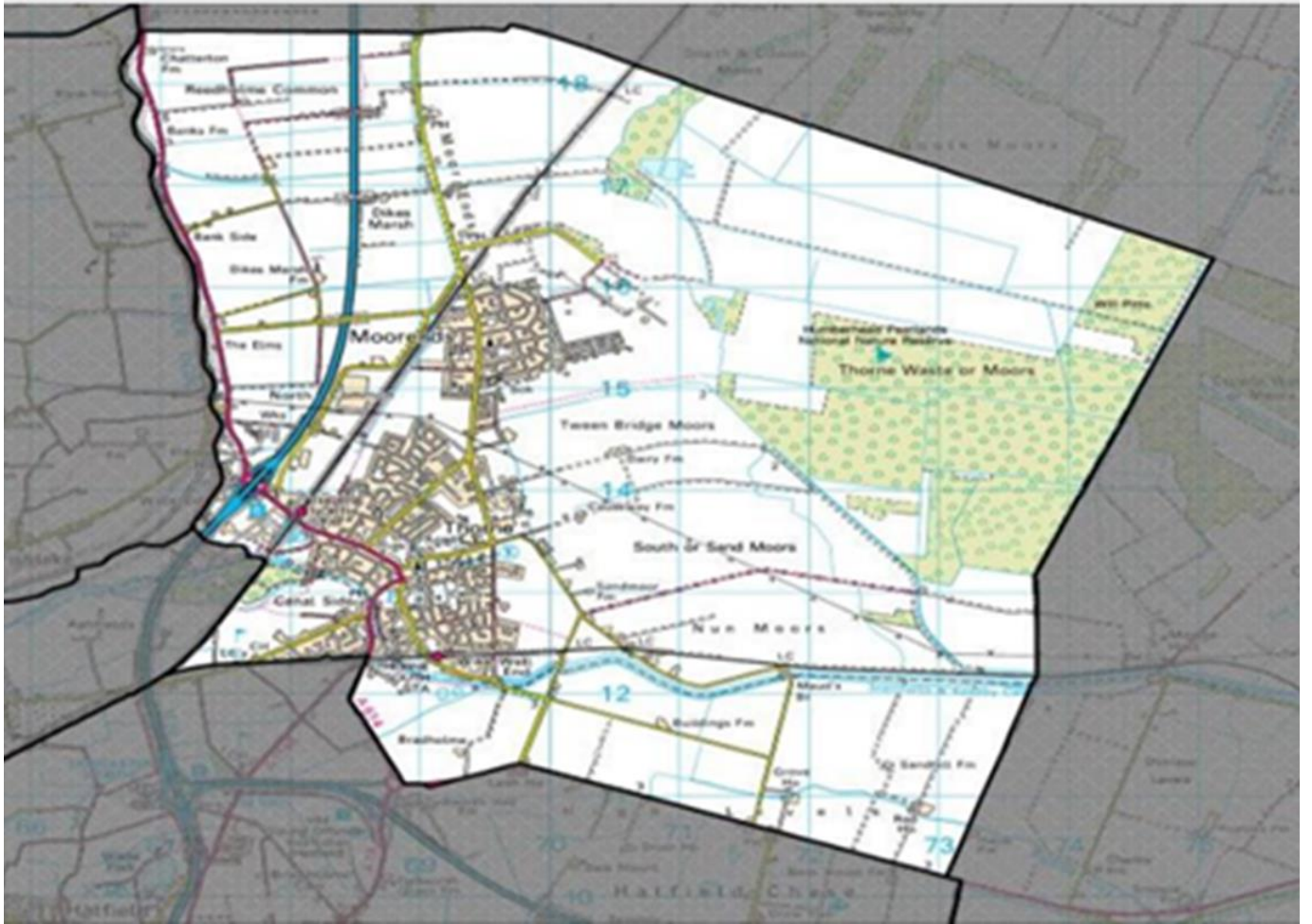
Empowering people in Doncaster to live better, healthier, and happier lives.

www.welldoncaster.uk

Well Doncaster
**Community
Wealth Builder**

Well Doncaster
Be Well

 **City of
Doncaster
Council**



This Report

This report focuses on the community of Moorends, part of the Thorne & Moorends Ward in the East of the City. The report begins with a one-page summary outlining key information and priorities. This document shows the initial conversations with communities, including ward members, community organisations, faith groups, residents and other organisations who work in the area. Communities' knowledge of their own areas enables them to identify their strengths and the assets on which they can build on. This document is shared with the intention of supporting those conversations and sharing information that might not be readily available to local people.

Where specific data for Moorends is unavailable, data for the Thorne & Moorends ward has been used.

Contents

This Report	3
One Page Summary	7
Key Health Priorities.....	7
Assets.....	8
Asset Maps.....	8
Health Assets.....	10
Assets in the Community	11
Community Investment.....	15
Ward Members	15
Health and Wealth	16
Wealth Inequalities.....	18
Fuel Poverty	18
Employment	19
Citizens Advice Doncaster.....	24
Foodbank Data	24
Long Term Health Conditions.....	25
Cause of Death.....	26
Smoking.....	26
Alcohol Consumption.....	26
Life Expectancy	26
Loneliness and Isolation.....	27
Child Development.....	28
Family Hubs	29
School Attainment	29
Pupil Lifestyle Survey	29
Physical Activity	30
Active Travel	31
Prevention and Control.....	32
Population Health Management.....	32
Community Information	33
Population.....	33
Demographics (Ethnicity, Language, and Religion).....	33
Housing.....	33
Antisocial Behaviour	35
Vulnerable Victims	36

Community Insight	37
Appreciative Inquiry	37
Doncaster Talks.....	39
Locality Plan.....	40
Appendix.....	41
Well Doncaster Annual reports	41
Census data 2021	41
Public Health Data	41
Acorn profiles	41
Get Doncaster Moving survey	42
Mosaic data.....	42
Pupil Lifestyle Survey 2022	43
Power BI – Joint Strategic Needs Assessment	43



Moorends



Significantly high rates of **coronary heart disease** and **heart attacks**



Significantly high emergency hospital admissions for **COPD**



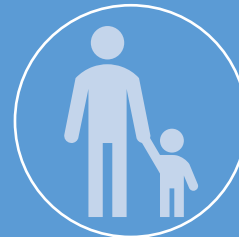
Circulatory diseases are the leading cause of death



1 in 3 adults have **no qualifications**



31.8% of population are **not in employment** and **have never worked**



1 in 3 children are living in **child poverty**

One Page Summary

Moorends is part of the Thorne & Moorends electoral ward, located in the East of the city. It is an outlying village within the East locality approximately 12 miles from the centre of Doncaster, with a population of approximately 5,200 (Census 2021). Moorends consists of 3 Lower-layer Super Output Areas (LSOAs): Moorends Northgate, Moorends East/Thorne Colliery and Moorends South.

The IMD score in Moorends is 39.41, this indicates that Moorends is ranked the 18th most deprived community in Doncaster (out of 88), with higher levels of deprivation than nearby Thorne, which has an IMD score of 30.69 (ranking 31/88).

Moorends has a higher proportion of children and young people aged 0-24 years, with a lower-than-average number of adults of all ages compared to Doncaster. 32.1% of children in Moorends are living in poverty, this is significantly higher than in England (17.1%) and Doncaster (22.7%).

Moorends has the highest prevalence of overweight or obese children at reception age across the city of Doncaster (33.3%). This increases to 41.1% in Year 6. Figures at both age groups are significantly higher than in Doncaster and England.

The leading cause of death in Moorends is deaths from circulatory diseases, under 75 years, followed by deaths from coronary heart disease. Both rates are significantly higher in Moorends compared to the national average.

Moorends has the highest incidence rate across the city of Doncaster for emergency hospital admissions for coronary heart disease, and the 2nd highest incidence of emergency hospital admissions for myocardial infarction (heart attack). Emergency hospital admissions for chronic obstructive pulmonary disease (COPD) is also significantly high in Moorends (143.3 per 100), compared to Doncaster (124.2).

19.6% of houses are socially rented in Moorends, this is higher than Doncaster (17.0%) and England (17.1%). 35.8% of households are owned outright, higher than Doncaster (33.6%) and England (32.5%). The majority of households comprise of either 3 people (20.2%) or 4 or more people (17.1%), this fits in line with a large number of children and young people in Moorends.

Moorends has a high proportion of economically inactive people (42.1%) and lower rates of economically active individuals currently in employment compared to Doncaster. The number of individuals who are not in employment is also high compared to England and Doncaster. Those that are in employment in are more likely to be in elementary occupations and lower-skilled work, and less likely to be in senior or professional roles

Key Health Priorities

- Deaths from circulatory diseases are the leading cause of death
- The highest incidence rate for emergency hospital admissions for coronary heart disease throughout the city of Doncaster
- Significantly high rates of children living in poverty
- The highest prevalence of overweight or obese children at reception age across the city of Doncaster

Assets

Well Doncaster use a community centred approach which allows investment in supporting, working with, and empowering communities to facilitate a healthy community. The voice and role of our communities and taking a strength/assets-based approach to work with individuals, families and communities is crucial to the achievement our overall vision. It is recognised that work is needed in the community to expand the understanding of who, how and what is accessed in the area. Greater knowledge of the identity of each community/ward will allow a more appropriate and effective response to community needs. Moorends remains a priority area for the East locality and ongoing work will continue to support it.

Asset Maps

The maps below show the different type of assets found across Moorends. These have been separated into Business, Community, and Health assets. It should be noted that these maps are a starting point in understanding the community and that further work is needed amongst the community to understand all the assets and how they are used. These maps will be updated to highlight any changes.

Business Assets

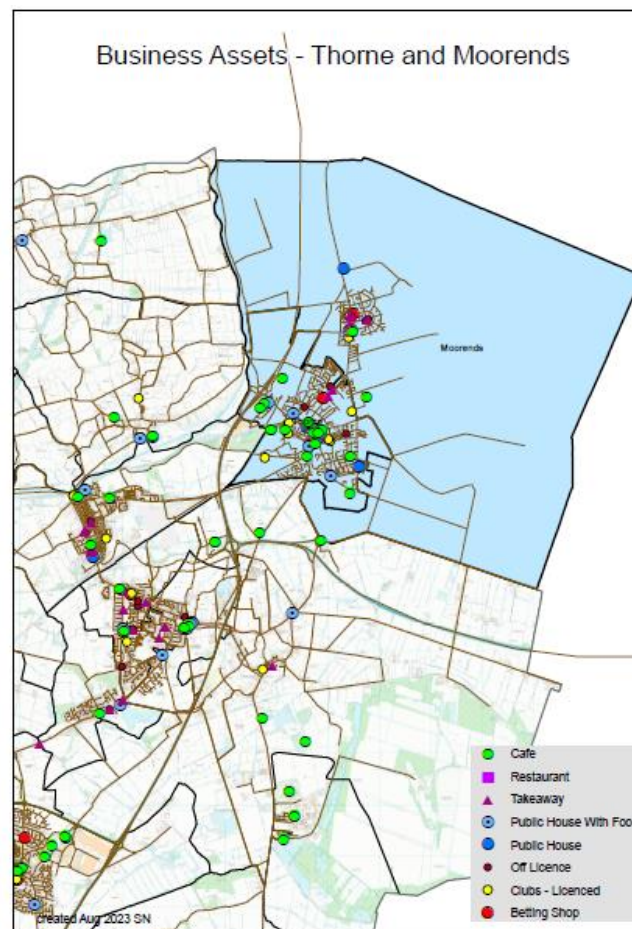


Figure 1. Business assets in Moorends

Community Assets

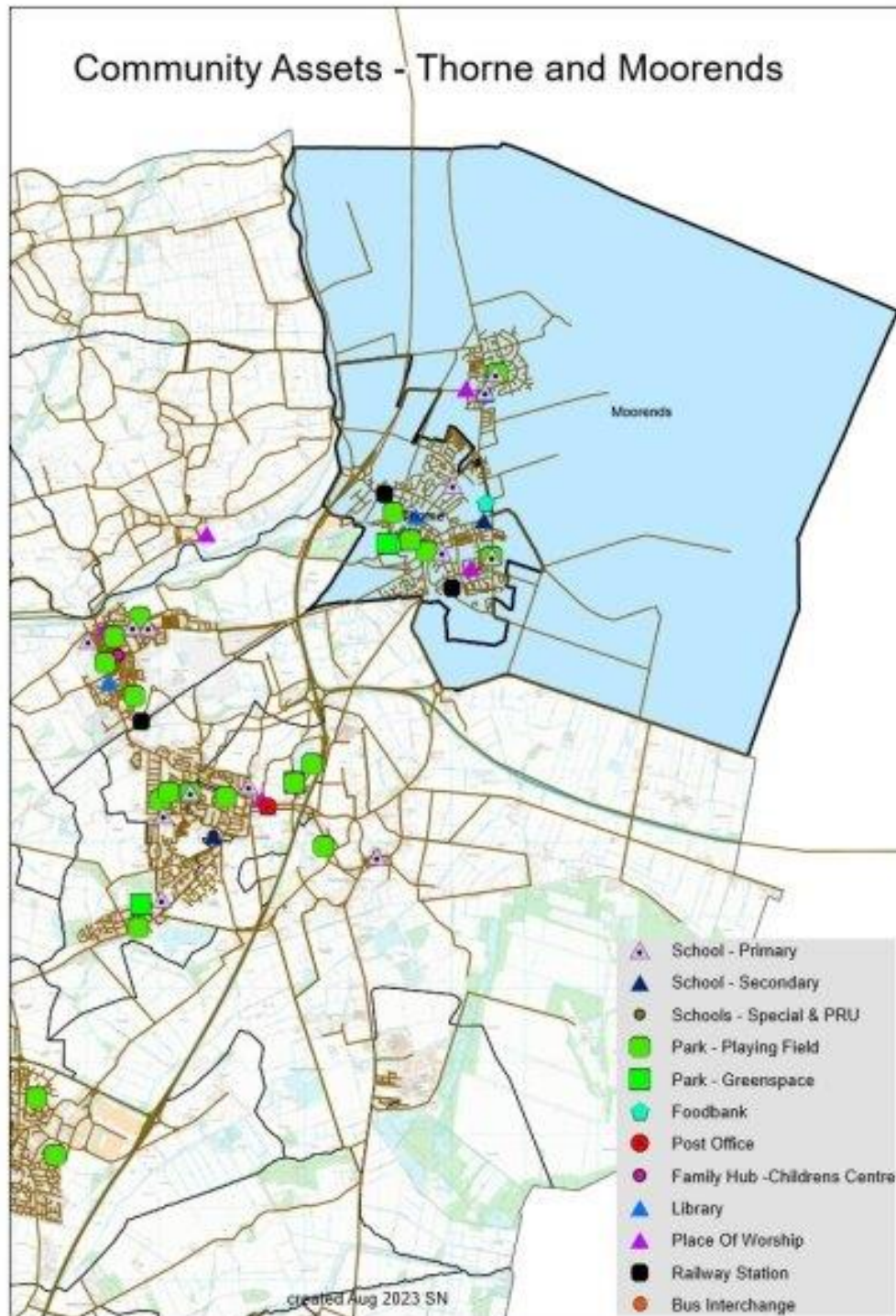


Figure 2. Community assets in Moorends

Health Assets

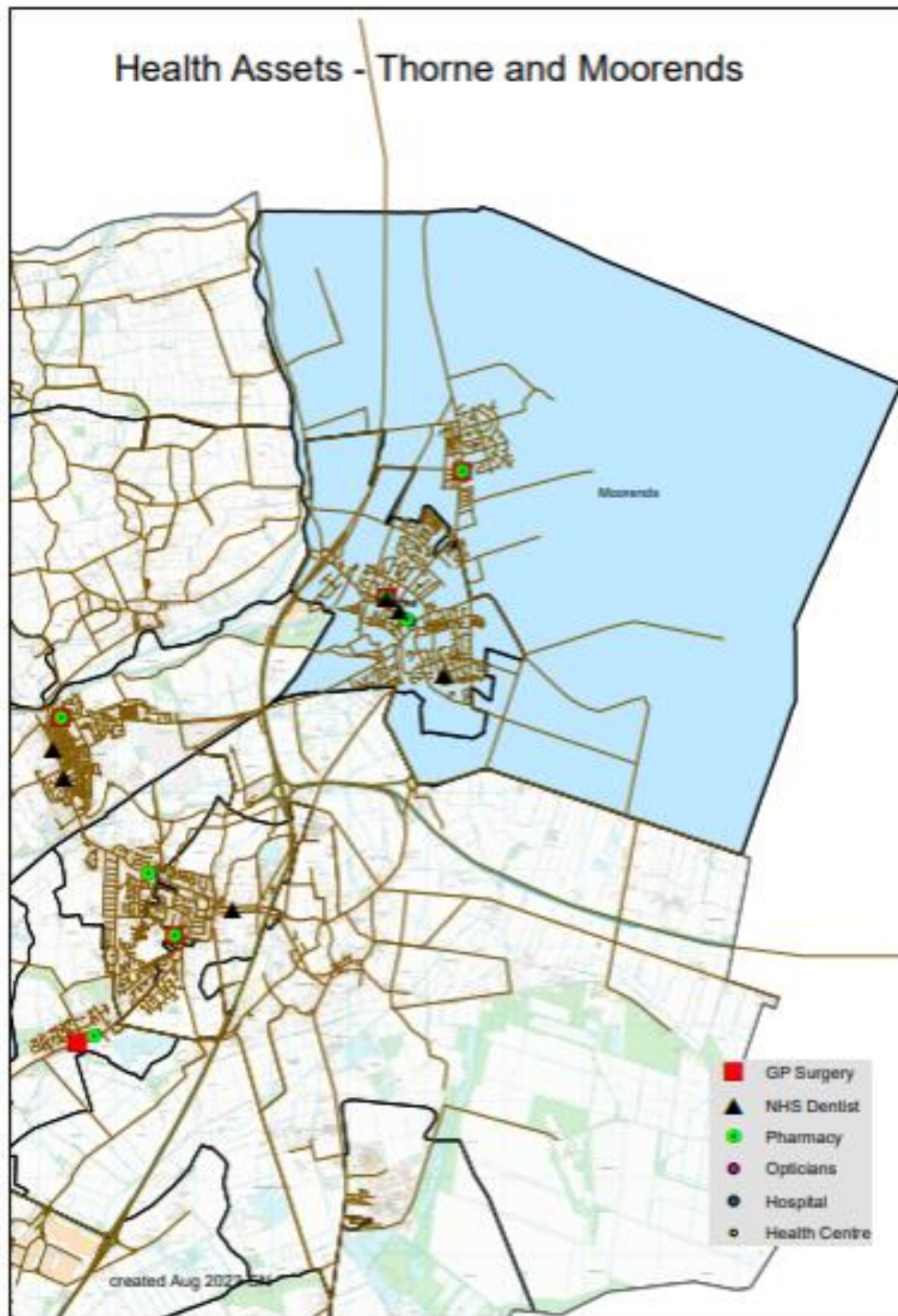
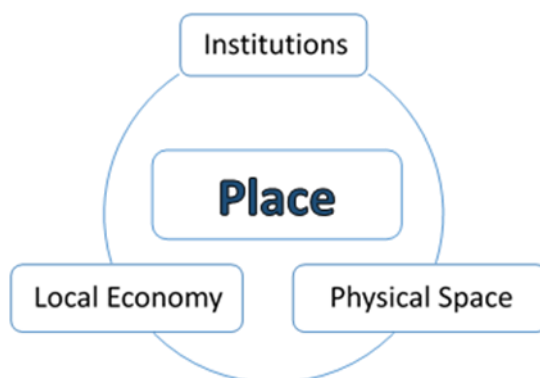


Figure 3. Health assets in Moorends

Assets in the Community

As part of a population health management approach, the following assets have been identified and themed around people and places:



Institutions (Schools/colleges etc.)	Physical space (Parks, car parks etc.)	Local Economy (Local profit Businesses)
Schools/Education <ul style="list-style-type: none"> West Road Primary School Marsh Land Primary GP <ul style="list-style-type: none"> Moorends Surgery Other <ul style="list-style-type: none"> Moorends Family Hub Making Friends Nursery Religious <ul style="list-style-type: none"> Moorends Spiritualist Church St Joseph's Catholic Church St Wilfred's C&E Church 	Parks/Green Space <ul style="list-style-type: none"> Moorends Rec Darlington Grove Sports Halls/ Community Venues <ul style="list-style-type: none"> The Winning Post Northgate community Centre Moorends Recreation Ground Northgate Community Hall Moorends miners' welfare Kingdom hall of jehovah witnesses Other <ul style="list-style-type: none"> Comrades club and institute Willow and wool animal sanctuary Thorne colliery football club Locarno road allotments Pig hill allotments Moorends social club Library 	<ul style="list-style-type: none"> Silver star wedding cars Premier top shop Moorends fish and chips Mirchi Keystore Golden star Hair gallery Estelles Moorends pizzeria Teasdale's Efe's grill Carlton house computer Fortune cookie Family shopper post office William hill Chris huby butcher

		<ul style="list-style-type: none">• Moorends café• Top cutz• Moorends hotel• Phets beauty salon• Sultan tandoori• The mad hatter sweet shop• Berties service garage• Hand car wash• Go local• One stop• Pizza land• Chips and things• Lads and lashes• House of paws
--	--	---



INDIVIDUALS (Key individuals within the community)	ASSOCIATIONS (Local Groups/Clubs)	STORIES (Good news stories)
<p>Ward Members</p> <p>Community leaders:</p> <ul style="list-style-type: none"> Volunteers in VCFS sector Community Connector <p>Professionals:</p> <ul style="list-style-type: none"> Well Doncaster officer Be Well Officer Locality Development Officer St Leger Communities team Police Community Support Officers PCN Neighbourhood Project Coordinator 	<p>Social Groups:</p> <ul style="list-style-type: none"> Moorends Miners Welfare <p>Moorends Working Group,</p> <ul style="list-style-type: none"> Thorne & Moorends Healthy Living Group Thorne & Moorends Youth Group Kids Fitness Zone Active Children's Zone Good Buddies Bridging Generations. <p>OAP Welfare</p> <ul style="list-style-type: none"> Weight Watchers, Over 60s Bingo Over 60s Thursday Club <p>Moorends Rovers Association</p> <ul style="list-style-type: none"> The Rotary Club Of Thorne <p>Support:</p> <ul style="list-style-type: none"> Mother and Toddler Group First Routes Moorends Allotment Society Moorends Stop Smoking Clinic Tri health Spoke Clinic <p>Recreation Ground</p> <ul style="list-style-type: none"> Thorne Colliery Juniors Thornensians RUFC Club Leisure Centre 	<p>Moorends Miners Welfare and Community Development Centre is a key asset in the community. Multiple groups and activities are delivered from the centre which supports residents of all ages.</p> <p>In March 2023, the Positive Action Group, volunteers and residents completed a litter pick in the community with 43 people taking part. As of September 2023, the group is continuing to litter pick and are meeting every other month. As well as taking pride in the community, the group are reducing social isolation and helping to build new friendships.</p>

	<ul style="list-style-type: none"> • Thorne Moor Marauders ARLFC (Rugby Union) • Junior Badminton • SSE Wildcats Girls • Windmill FC • Thorne Colliery Cricket Club • Thorne District Angling Association • Thorne Ramblers • Thorne Netball Club • Moorends Hornets & Stingers JFC <p>Others:</p> <ul style="list-style-type: none"> • TMCRFM Limited • Thorne & Moorends Community Radio • Thorne and Moorends Regeneration • Sea Cadets, • Old Peoples Centre • Best of Thorne • Thorne Local History • Moorends Local Association • St Johns Ambulance <p>Food Banks:</p> <ul style="list-style-type: none"> • Thorne and Moorends Foodbank • Moorends Miners Welfare and Community Development Centre 	
--	--	--

Community Investment

The East locality has received £775,000 of community investment through Public Health and Partners. Of this, £294,720 has been directly invested in the Thorne & Moorends ward, with over £225,000 investment in Moorends. The investment has contributed towards the community priorities of increasing sense of community spirit, supporting physical activity and children and young people provision.

Ward Members

The Thorne & Moorends ward has three ward Councillors.



Councillor Joe
Blackham

Thorne and
Moorends
Labour
Portfolio Holder
for Highways,
Infrastructure and
Enforcement



Councillor Susan
Durant

Thorne and
Moorends
Labour



Councillor Mark
Houlbrook

Thorne and
Moorends
Labour
Portfolio Holder
for Sustainability
and Waste

Contact details for the Ward Councillors are as follows:

Joe.blackham@doncaster.gov.uk

Susan.durant@doncaster.gov.uk

Mark.houlbrook@doncaster.gov.uk

Moorends also has several serving Town Councillors from Thorne & Moorends Town Council.

Health and Wealth

Health inequalities are avoidable differences across the population and between different groups within society. Health inequalities arise from the conditions in which we live, work, and play. These conditions influence our opportunities for good health, how we think, feel, and act, therefore shaping our health and wellbeing.

Evidence shows that people living in our most deprived areas face the greatest health inequalities in relation to health access, experiences, and outcomes. Deprivation covers a range of issues and refers to unmet needs caused by a lack of resources, including but not limited to finances, housing, and education. It is measured in different ways including the Indices of Multiple Deprivation (IMD). Doncaster is within the 10% most deprived communities in England.

The overall deprivation map from 2019 below shows deprivation across the city by Lower Super Output Areas (LSOAs). Areas in red are those in the top IMD decile, which means that they have been identified as being most deprived. Moorends has been identified on the map.

Doncaster Borough
Deprivation by LSOA
(IMD 2019)

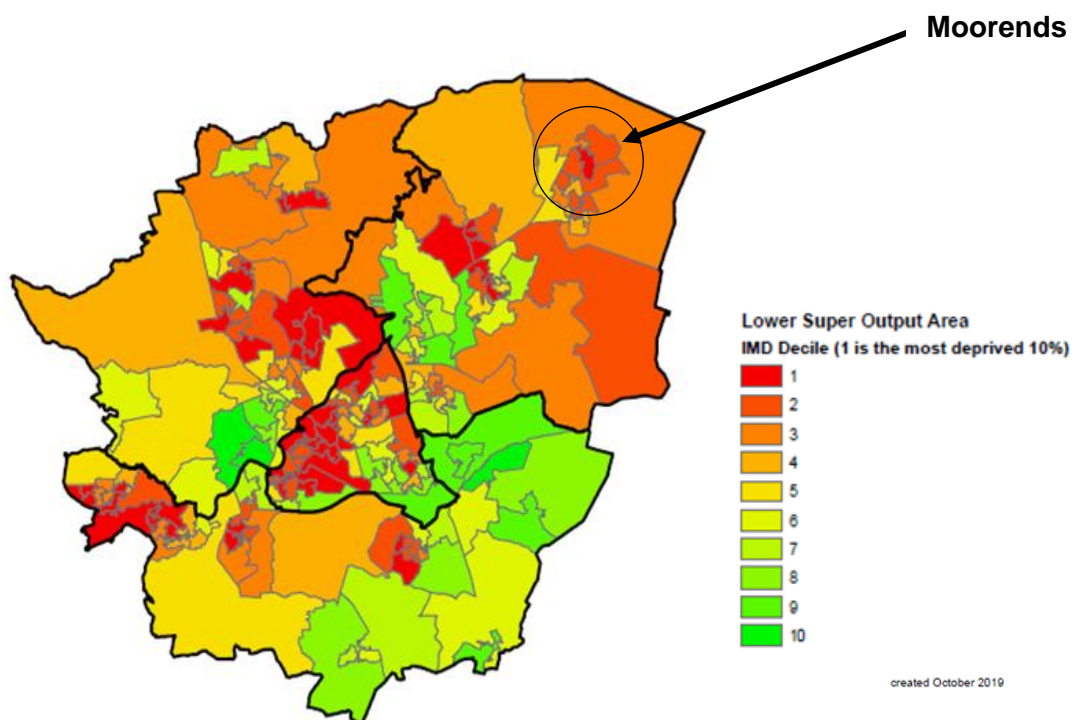


Figure 4. Doncaster borough deprivation by LSOA, 2019

The 2021 Census data has been used to produce estimates that classify households in England and Wales by four dimensions of deprivation; Education, Employment, Health and Housing. This information is then broken down into household deprivation within Moornends compared to England. As demonstrated in the infographic to the right, Moornends has higher rates of households deprived in one, two, and three dimensions than England, with lower rates of households not deprived in any dimension.

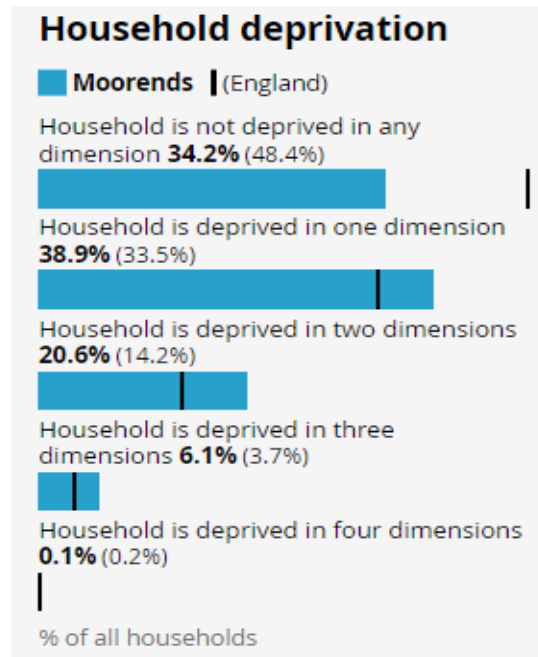


Figure 5. Household deprivation (Census 2021)

The following maps show the number of households that are deprived in one dimension, followed by the number of households deprived in three dimension. Households deprived in three dimensions indicates higher or more complex levels of deprivation. The darker colour represents a higher prevalence.

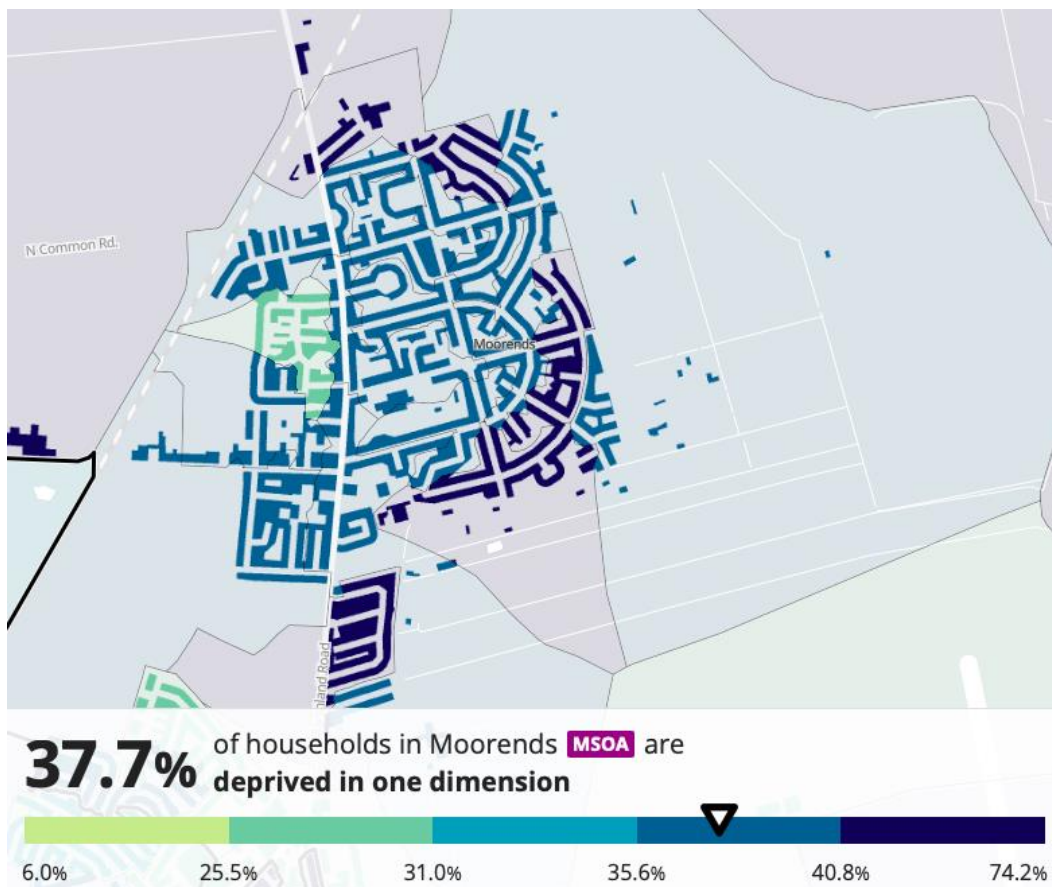


Figure 6. Household deprivation in one dimension (Census 2021)

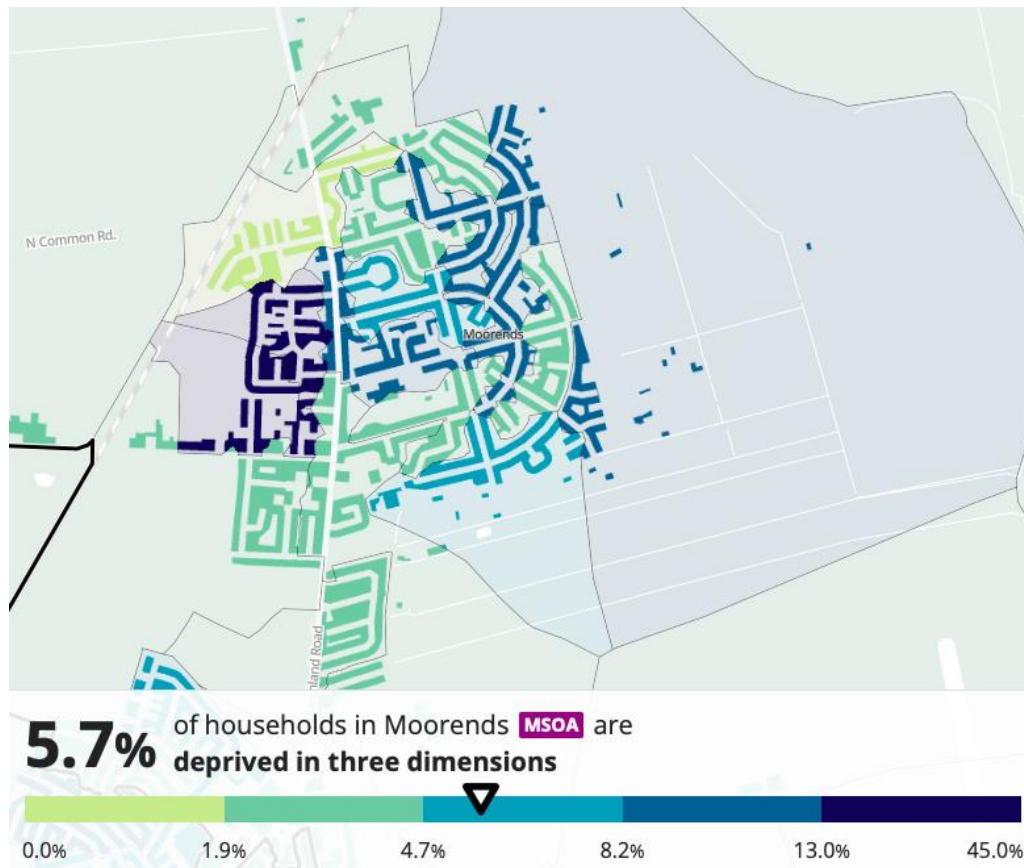


Figure 7. Household deprivation in three dimension (Census 2021)

Wealth Inequalities

The Index of multiple deprivation score in Moorends is 39.41, this indicates that Moorends is ranked the 18th most deprived community in Doncaster (out of 88), with higher levels of deprivation than nearby Thorne, which has an IMD score of 30.69 (ranking 31/88).

24.8% of households in Moorends are living in poverty, compared to 23.0% in nearby Thorne, both are higher than England (21.1%).

The number of older people in poverty in Moorends (20.8%) is also significantly than the England (14.2%) and Doncaster (15.9%) rate.

Furthermore, 32.1% of children are living in poverty in Moorends, this is significantly higher than England (17.1%) and Doncaster (22.7%).

The prevalence of childhood poverty and older people living in poverty in Moorends, is higher than nearby Thorne.

Fuel Poverty

Fuel poverty is directly linked to energy efficiency, energy prices and household income. Fuel poverty is distinct from general poverty: not all poor households are fuel poor, and some households would not normally be considered poor but could be pushed into fuel poverty if they have high energy costs. Evidence shows that living in cold homes is associated with poor

health outcomes and an increased risk of morbidity and mortality for all age groups; furthermore, studies have shown that more than one in five (21.5%) excess winter deaths in England and Wales are attributable to the coldest quarter of housing.

Modelled estimates of the proportion of households in fuel poverty shows that 18.8% of households in Doncaster are living in fuel poverty. This is higher in the Thorne & Moorends ward, at 19.9%. This further increases at a community level, with 22.7% households experiencing fuel poverty in Moorends.

The map below outlines fuel poverty levels across the city of Doncaster, with darker colours indicating higher deprivation.

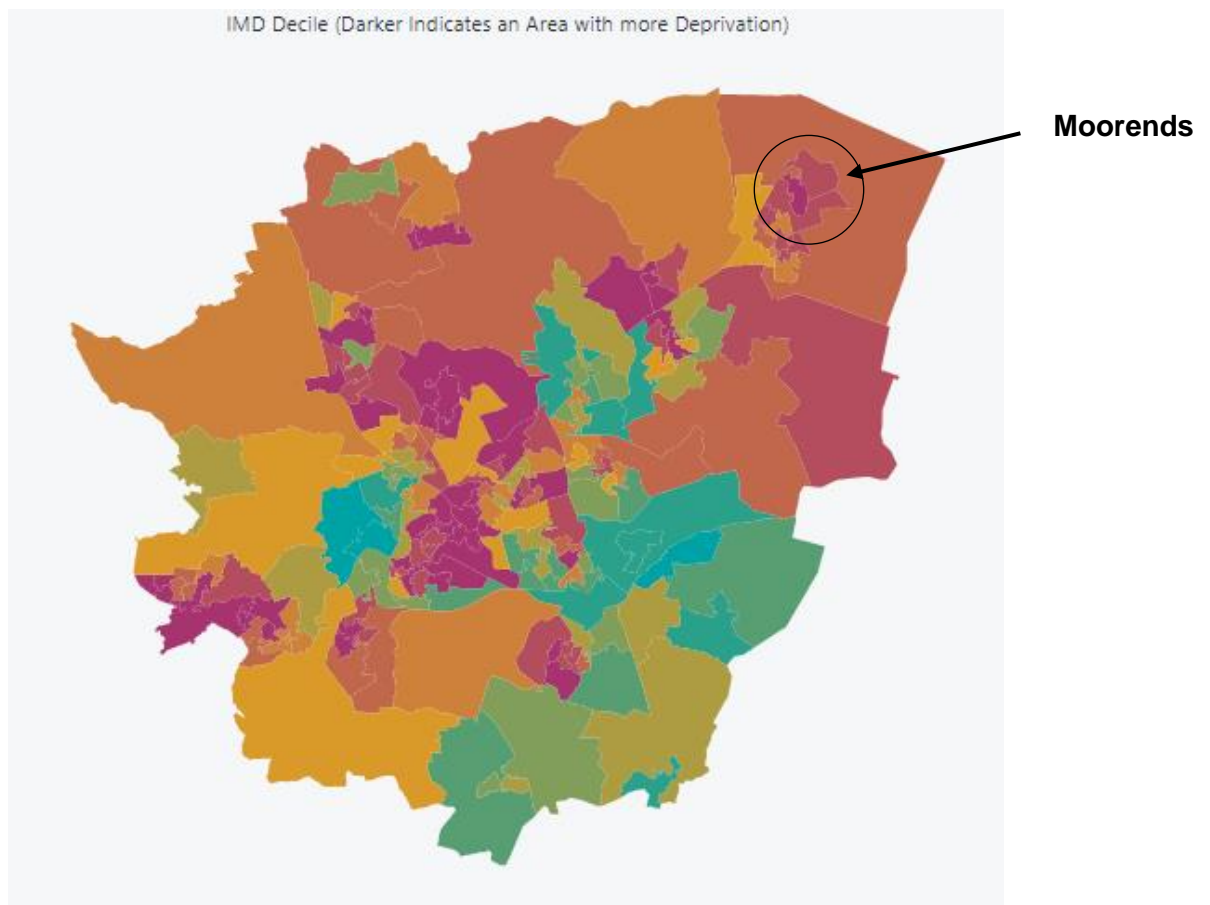


Figure 8. IMD Deciles

Employment

Moorends has a higher proportion of economically inactive people (42.1%) than England (39.1%) and Doncaster (41.7%). Alongside this, there is lower rates of economically active individuals currently in employment within Moorends (54.7%) than in England (57.4%) and Doncaster (54.9%).

Economically active adults are those aged 16 years and over who are:

- in employment (an employee or self-employed)
- unemployed, but looking for work and could start within two weeks
- unemployed, but waiting to start a job that had been offered and accepted

Economically inactive are those aged 16 years and above who did not have a job, and had not looked for work, this can include retired individuals and students.

The number of individuals who are not in employment: Never worked in Moorends is significantly high at 31.8% compared to England (25.6%) and Doncaster (27.2%). The heat map below the population of adults aged 16 years and over not in employment in Moorends at street level, the darker colour represents a higher prevalence.

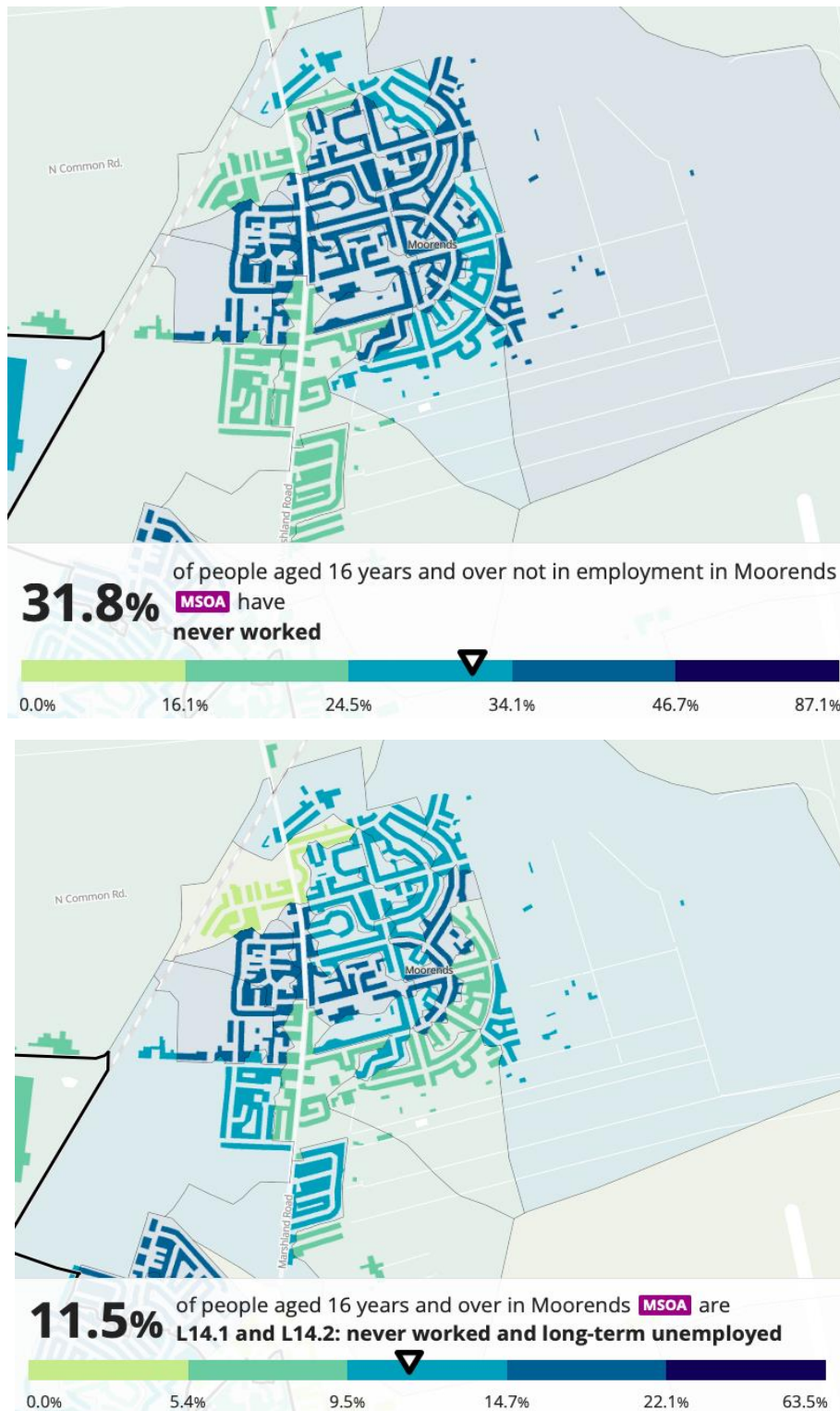


Figure 9. Never worked and long-term unemployed (Census 2021)

Those that are in employment in Moorends are more likely to be in elementary occupations and lower-skilled work, and less likely to be in senior or professional roles, as demonstrated in the infographic below.

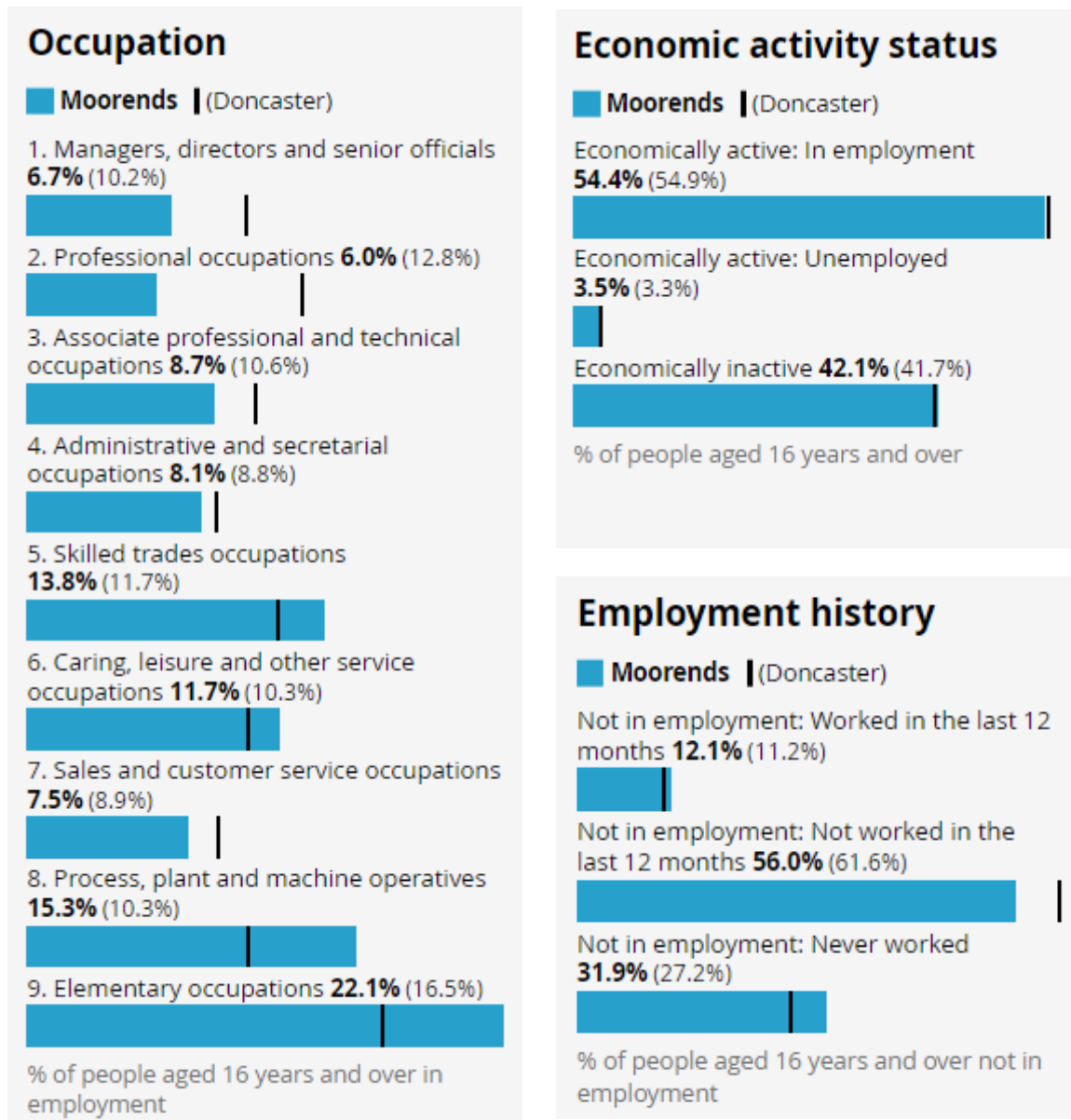


Figure 10. Occupation, Employment History and Economic activity status in Moorends (Census 2021)

Furthermore, the number of residents living in Moorends that have no qualifications is high at 29.9%, this is higher than the Doncaster and England rate, at 24.6% and 18.1% respectively. Alongside this, the number of residents that have a Level 4 qualification and above is low at 14.3%, in comparison to the Doncaster (22.7%) and England (33.9%) rates. This is shown in the table to the right.

The map below highlights the prevalence of people aged 16 years and over with no qualifications in Moorends. The darker colour represents higher levels of individuals with no qualifications.

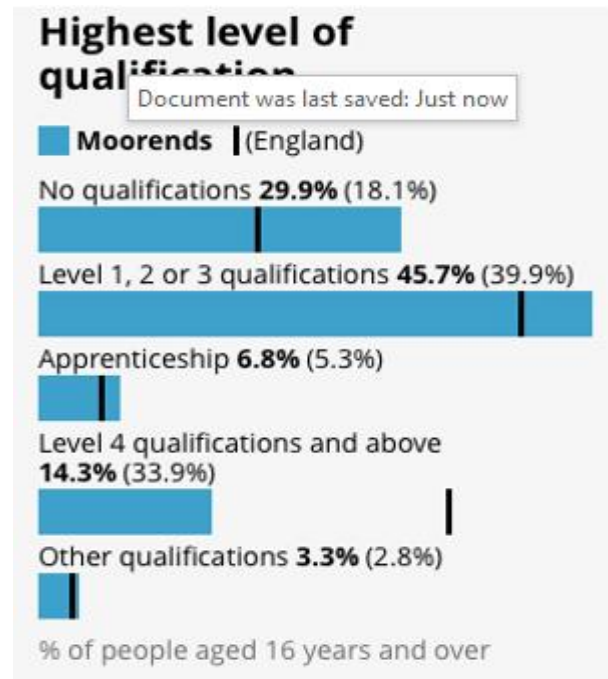


Figure 11. Qualification levels in Moorends (Census 2021)

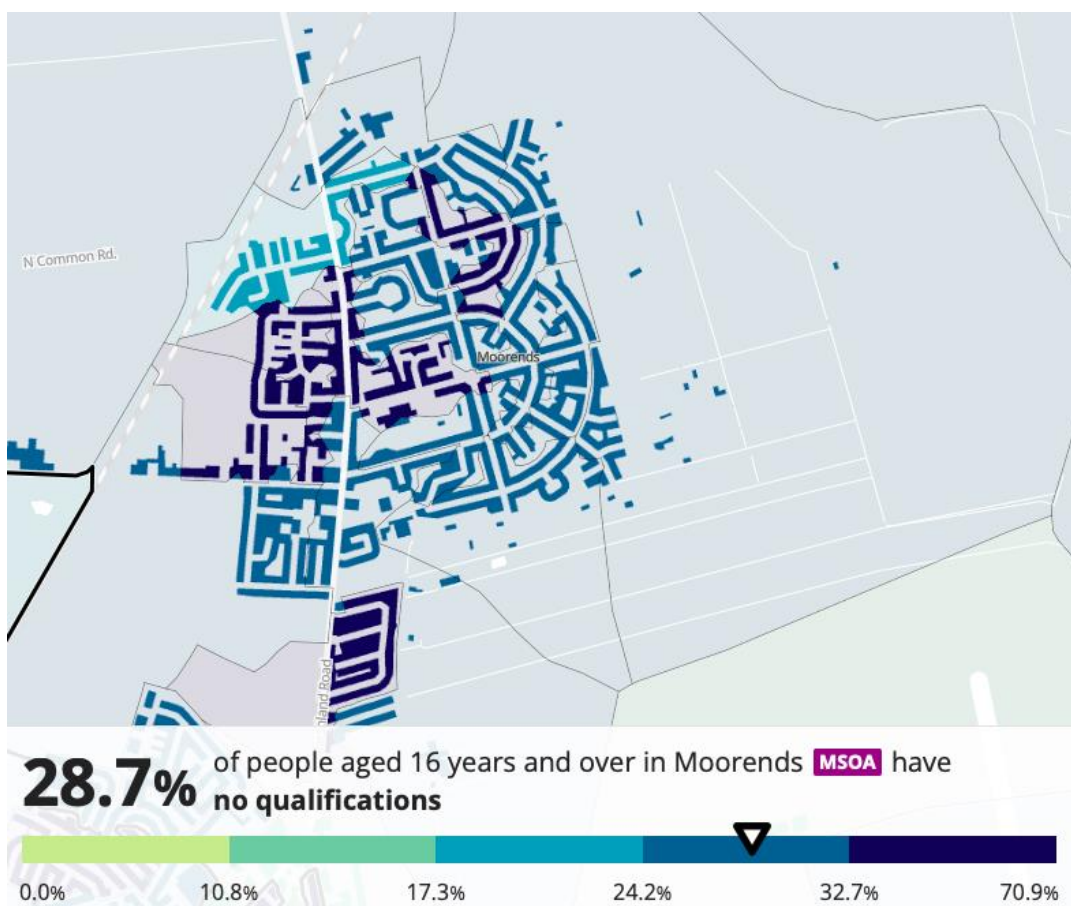


Figure 12. Qualification level by street in Moorends (Census 2021)

Doncaster is the 3rd most deprived out of 151 Upper-tier local authorities for Education, Skills and Training, the graph below shows the lack of attainment and skills in the local population, the darker the colour represents lower levels of skills and lack of attainment and highlights Moorends as ranking amongst the lowest.

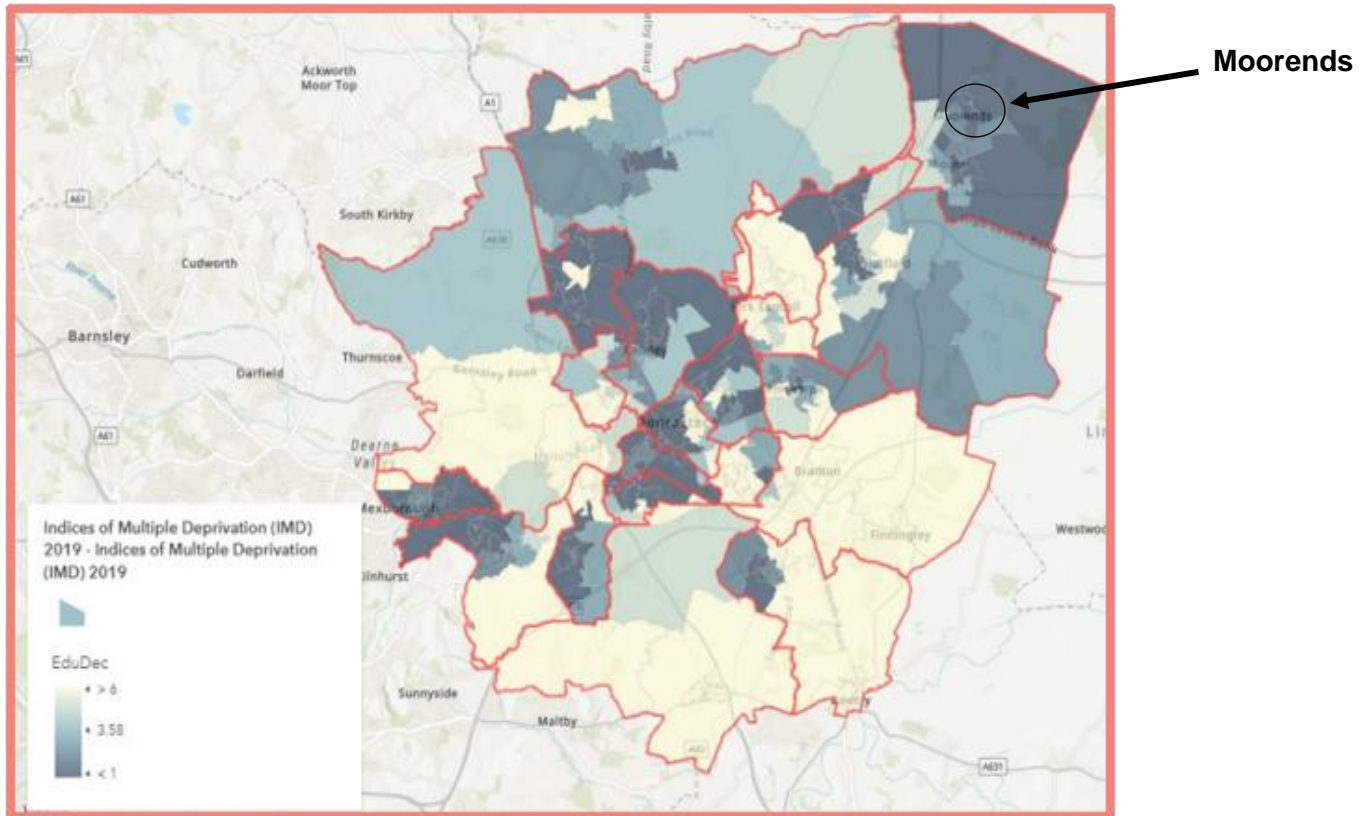


Figure 13. Attainment and skills in the local population (IMD 2019)

Long Term Health Conditions

In Moorends the number of people who reported having a limiting long term illness or disability is higher than the England rate, at 22.8% and 17.6% respectively (Office for Health Improvement & Disparities 2023). In Moorends 22.3% of residents classify as being Disabled under the Equality Act, this is higher than the England rate of 17.3%. Alongside this, there is a higher number of residents who describe their health as “very bad”, “bad” or “fair”, coupled with significantly lower rates who report being in “very good” or “good” health. This is illustrated in the infographics below, which compared Moorends to Doncaster.

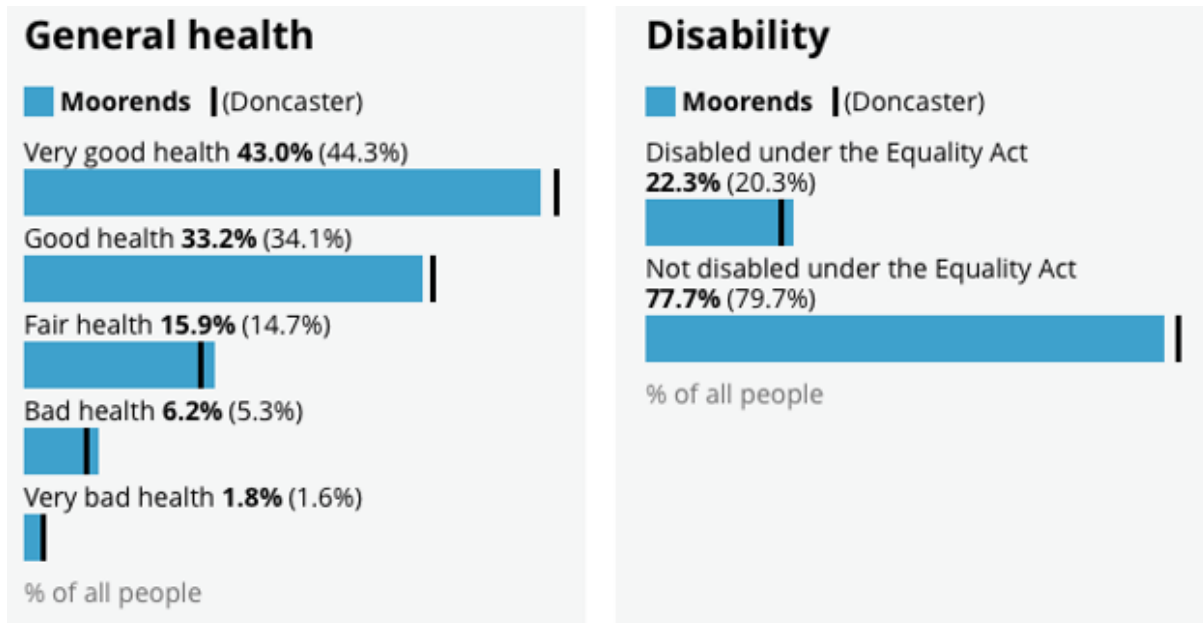


Figure 15. Health status in Moorends (Census 2021)

Moorends has the highest incidence rate across the city for emergency hospital admissions for coronary heart disease, at 190.3 per 100, this is significantly high compared to Doncaster (114.6).

Emergency hospital admissions for myocardial infarction (heart attack) is also significantly high (180.7 per 100) and is the 2nd highest rate across the city, following Bentley & Toll Bar.

Emergency hospital admissions for chronic obstructive pulmonary disease (COPD) is significantly high in Moorends (143.3 per 100), compared to Doncaster (124.2), but lower than nearby Thorne (166.5).

Cause of Death

The leading cause of death in Moorends is deaths from circulatory diseases, under 75 years, followed by deaths from coronary heart disease. Both rates are significantly higher in Moorends compared to the national average.

Smoking

Smoking status as self-reported by patients during registration at a GP practice is available for the East Primary Care Network (PCN) which covers Moorends. Data shows that Doncaster East PCN had a total sum of 10,139 smokers, with a prevalence of 17.17%. This is in line with the Doncaster average of 17.96%.

Alcohol Consumption

Alcohol specific admissions per 1000 population for the period April 2016 – July 2023 show that Moorends Northgate had a high incidence rate at 46.97 / 1000, ranking amongst the highest in the East locality and higher than the Doncaster rate of 43.67. This was lower in Moorends South (32.20 / 1000) and Moorends East/Thorne Colliery (27.83 / 1000), which both had a lower incidence rate than Doncaster. This can be seen in the infographic below.

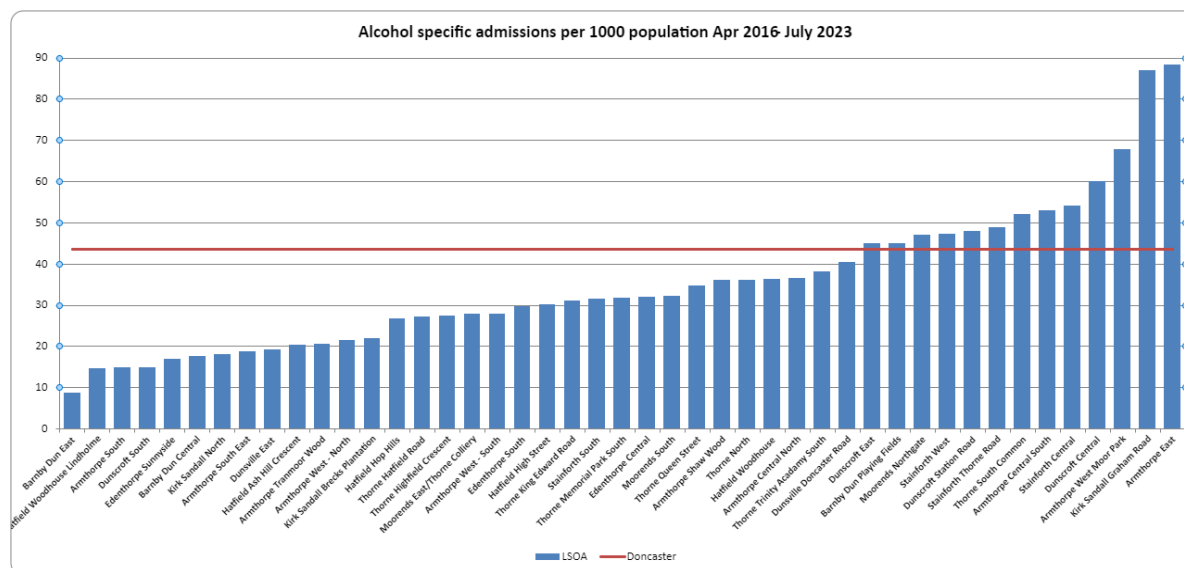


Figure 16. Alcohol specific admissions for East locality

Life Expectancy

Life expectancy at birth in Moorends is 75.7 years in men, which is lower than Doncaster (77.9 years) and England (79.5 years). Life expectancy for females in Moorends is 82.1 years, this is lower than England (83.2 years), but higher than Doncaster (81.3 years).

Males in Moorends have a lower life expectancy than those living nearby in Thorne, by -0.6 years. Conversely, life expectancy for females living in Moorends is +3.8 years compared to Thorne. Figure 15 and 16 below shows life expectancy at a ward level across the city of Doncaster for males and female.

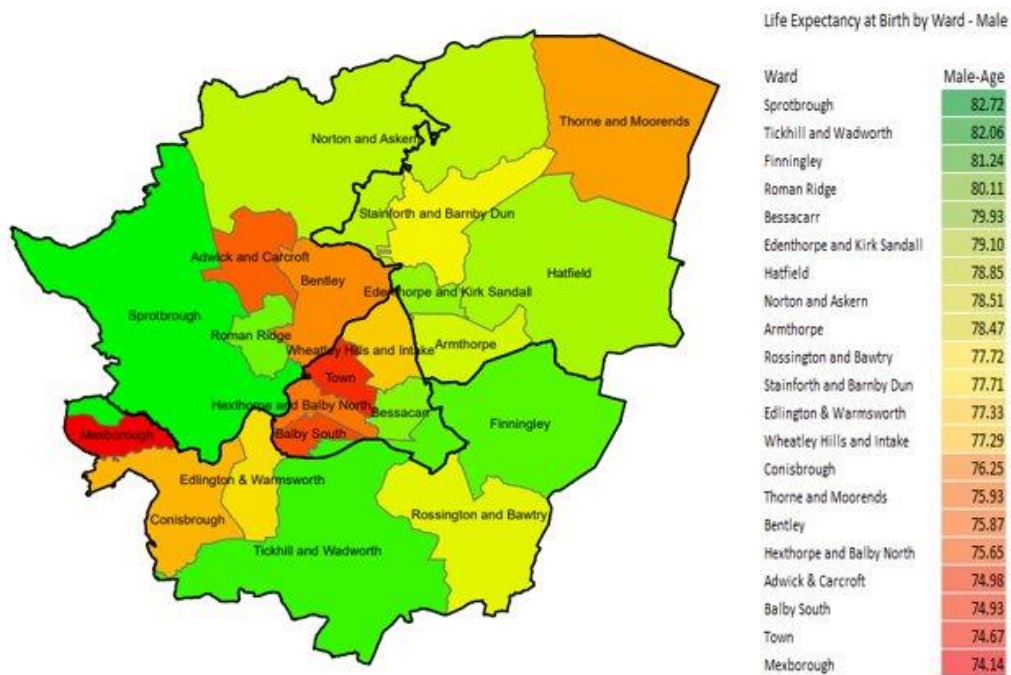


Figure 20. Life expectancy at birth by ward - Male

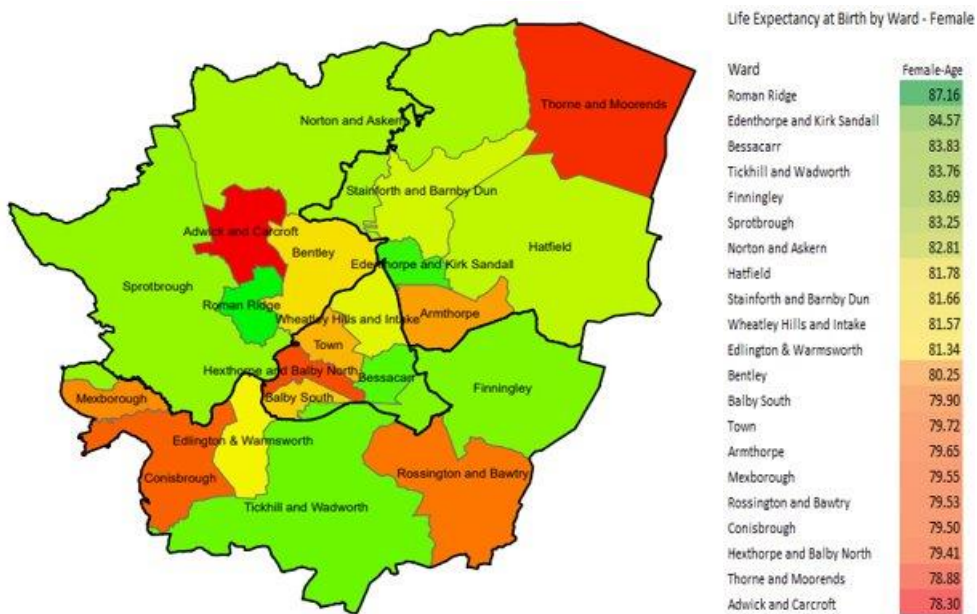


Figure 17. Life expectancy at birth by ward – Female

Loneliness and Isolation

Approximately one quarter of people live alone in Moorends (25.5%) compared to 31% in Doncaster and 30.1% in England. Whilst this does not indicate loneliness and/or isolation, it is an indicator to be considered alongside local intelligence.

Loneliness and isolation are associated with mental health and wellbeing. There is currently work being undertaken to develop a more in depth understanding of the impact of COVID-19 on the mental health of residents in the Thorne & Moorends ward.

Data shown below highlights the percentage of residents in the Thorne and Moorends ward estimated to have clinical depression, as well as predicted rates of other self-reported indicators of mental health and wellbeing. Almost 9% of residents are believed to have clinical depression, this figure is 21% greater than the average for Doncaster. There are also higher levels of all other mental health and wellbeing indicators in Thorne & Moorends, including feeling downhearted/depressed in the past 4 weeks and having no sense of self-worth.



Figure 18. Indicators of mental health and wellbeing for Thorne & Moorends (Acorn 2021)

Furthermore, emergency hospital admissions for intentional self-harm in Moorends (114.5 per 100) is significantly higher than the national rate and is the 2nd highest prevalence amongst the East locality, following Hatfield East at 181.6 per 100.

Child Development

Growing up in poverty damages children's health and well-being, adversely affecting their future health and life chances as adults. Ensuring a good environment in childhood, especially early childhood, is important. A considerable body of evidence links adverse childhood circumstances to poor child health outcomes and future adult ill health. The Income Deprivation Affecting Children Index (IDACI) measures the proportion of all children aged 0 to 15 living in income deprived families. In Moorends, 31.1% of children are classed as living in child poverty, this is significantly higher the England rate (17.1%), and higher than Doncaster. At ward level, Moorends has a higher prevalence of children living in poverty compared to nearby Thorne (22.1%), highlighting the inequalities within the ward.

33.3% of children are overweight or obese at reception age in Moorends. This increases to 41.1% in Year 6. Figures at both age groups are significantly higher than in Doncaster and England. Data shows that Moorends has the highest prevalence of overweight or obese children at reception age across the city of Doncaster, followed by Warmsworth, Braithwell & Stainton.

Emergency hospital admissions for injuries in 15 to 24 year olds in Moorends is significantly higher than the England rate, at 218.2 (per 10,000) and 161.6 (per 10,000) respectively.

Conversely, emergency hospital admissions in under 5 years olds is significantly low in Moorends at 82.2 (per 1000). This is lower than the Doncaster (91.1) and national (140.7) rate.

Family Hubs

Doncaster Family Hubs are the 'place to go' for families. They work with other providers to offer a range of activities, services and information for families and welcome families with children of all ages from conception through childhood to adolescence. There are 3 family hubs within the East locality, these are located in Armthorpe, Moorends and Stainforth. Family Hub membership in the Thorne & Moorends ward is lower than the Doncaster total at 76% and 83% respectively.

Part of the role of Doncaster Family Hubs is to provide support to families accessing two-year-old funding (a government scheme funded entitlement to childcare). The number of eligible children living in the Thorne & Moorends ward taking up their funding entitlement to Two Year Funding is 71. This was the highest uptake rate across the East locality, and amongst the highest rates across Doncaster.

The total number of open families that are working with family hub services is 8. This is similar to neighbouring wards in the East locality.

The total number of children aged under 5 years who are receiving targeted support with their development is 41. This is higher than neighbouring wards and ranked the highest in the East locality.

School Attainment

The Department for Education supplies each local authority with the school attainment grades for those in KS2 and KS4. At KS4, each pupil is given an Attainment 8 score (a score out of 90) based on their 8 best GCSE grades including English, maths and at least 3 other traditional academic GCSEs (sciences, languages, and humanities). Other qualifications at an equivalent level (e.g., BTECs) can also count towards the score.

In 2019, average GCSE attainment 8 score per pupil was 37.4 in Moorends, this is lower than both Doncaster (44) and England (46.7). Results in 2022 decreased to 36.5 and were still lower than Doncaster (45.2) and England (48.8). This was also amongst the lowest 5% of school attainment across Doncaster.

In 2023 for KS2, 59% of pupils achieved the expected standard in reading, writing, and mathematics in Moorends, a decrease from 65% in 2022, and a further decrease from 69% in 2019. This is compared to Doncaster (55%) and the England rate of 60%.

10 children in Moorends have been recorded as receiving Elective Home Education and 16 are known to be missing education (City of Doncaster Council 2023).

Pupil Lifestyle Survey

The Pupil Lifestyle Survey is conducted by City of Doncaster Council to provide valuable data on children and young people's health-related behaviour, through an anonymous school-based questionnaire. Data from the survey has provided a set of Doncaster-wide figures at

key points in children and young people's development; KS2, 3 and 4. 246 pupils participated in the Thorne & Moorends ward, consisting of children in all age groups. It is important to note that the Pupil Lifestyle Survey is self-reported and may not have been completed by all the schools.

9% of children in the Thorne & Moorends ward reported having a disability, this was the 2nd highest rate across the city, following Armthorpe (10%) and higher than Doncaster (7%).

8% of children have Special Education Needs, lower than Doncaster (10%), and 32% receive extra help, lower than Doncaster (48%).

Only 78% of children reported that they have breakfast, this was the 2nd lowest rate across the city, following Norton and Askern. This was also lower than the Doncaster rate (86%). Furthermore, 22% of children receive free school meals, higher than the Doncaster rate of 19%.

The number of children in the Thorne & Moorends ward that feel warm and comfortable at home (99%), able to keep themselves clean at home (93%) and able to have a restful night's sleep at home (85%) were all higher than the Doncaster rates.

63% of children in the Thorne & Moorends ward are happy with life, this is amongst the lowest rates in the city and below the Doncaster rate of 67%. Only 43% feel able to share ideas to make things better at school, this is the lowest rate across the city – followed by the Norton & Askern ward at 47% - and below the Doncaster rate of 63%.

The Thorne and Moorends ward ranked the highest across all wards for having a nice, safe place at home or near home to play (93%) and was higher than the Doncaster rate of 87%. Furthermore, 92% of children reported feeling safe at home, again amongst the highest rates across the city.

Physical Activity

It is known that Doncaster has more physically inactive adults, and fewer physically active adults than the national average. 28.9% of adults in Doncaster are physically inactive, this is significantly higher than the England rate (23.4%). Alongside this, the number of physically active adults in Doncaster is lower than the England rate, at 59.3% and 65.9% respectively.

The Mosaic map below shows where there are high numbers of inactive households across Doncaster. Data is mapped to LSOA however wards are shown and labelled for orientation. This data has been matched to the number of children and young people living in deprived and inactive households. It is known that Moorends has a moderate number of inactive households.

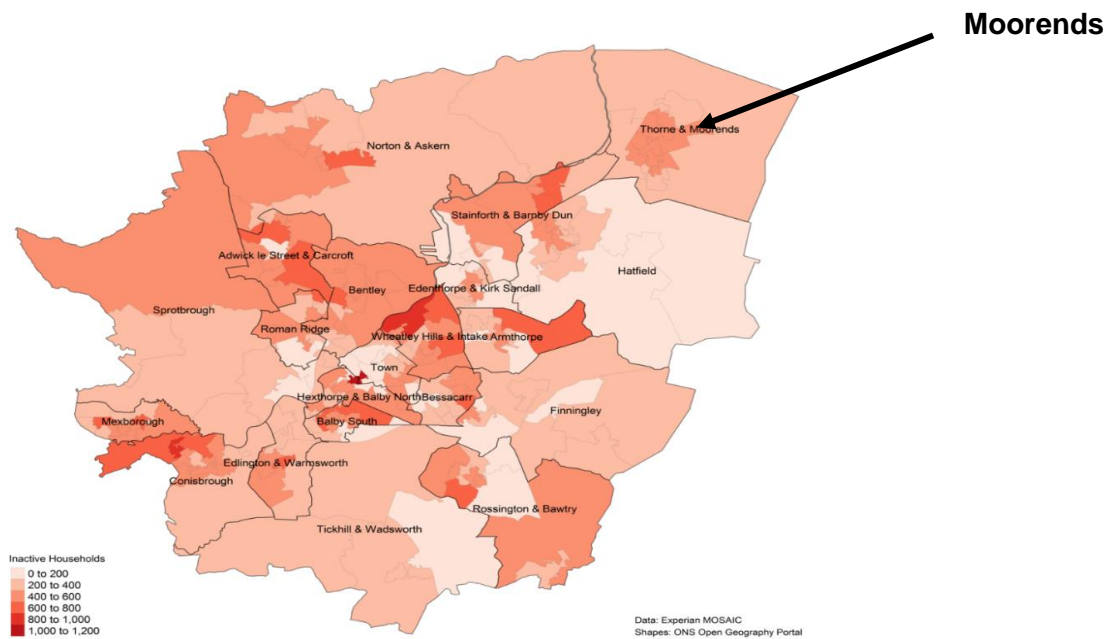


Figure 19. Mosaic map of household physical activity levels in Doncaster.

60% of children reporting partaking in exercise that shows physical signs, this is higher than the Doncaster rate of 56%. However, only 70% reported enjoying physical activity, this was the lowest response across all wards in the city.

Active Travel

Census data (2021) shows that many residents aged 16 years and over in employment in Moorends travel less than 10km to a place of work (34.7.0%), with a further 28.6% travelling 10-30km. The leading method of travel to the workplace is driving a car or van (61.6%) or being a passenger in a car or van (7.8%). The number of residents in Moorends that travel by active travel modes such as bicycle or walking (13%) is higher than the England (9.7%) and Doncaster (8.9%) rate.

Furthermore, the Pupil Lifestyle Survey showed that 54% of children in the Thorne & Moorends ward reported walking to school, this is higher than the Doncaster rate of 47% and ranked amongst the highest across the city.

Prevention and Control

Up to and including 29 November 2023 in Moorends, 77.1% of residents had been vaccinated against COVID-19 with one dose, 72.5% with two doses, and 55.9% with a 3rd dose or boosters (UK Health Security Agency 2023). Vaccination uptake is lower in Moorends than nearby Thorne, this is shown in the table below.

	Thorne	Moorends
1 st dose (%)	81.6	77.1
2 nd dose (%)	78.0	72.5
Booster or 3 rd dose (%)	63.3	55.9

Figure 20. COVID-19 Vaccination rate

Population Health Management

COVID-19 has had a huge impact on communities, and it is vital to understand the impact and direction the pandemic has had on community organisation in the ward so that support can be offered, and work can be done to manage any gaps or risks associate with changes. To support with this, Well Doncaster officers undertake regular population health management insight with community organisations in Moorends identifying their status and needs, and work with each group to meet their goals. This is a living document and will be updated and adapted as needs are met and change. If you would like more detail on this, please contact WellDoncaster@doncaster.gov.uk

Community Information

Population

5200 (Census 2021)

The population of Moorends on average has a higher proportion of children and young people aged 0-24 years, with a lower-than-average number of adults of all ages compared to Doncaster. This is demonstrated in the infographic below which outlines age composition.

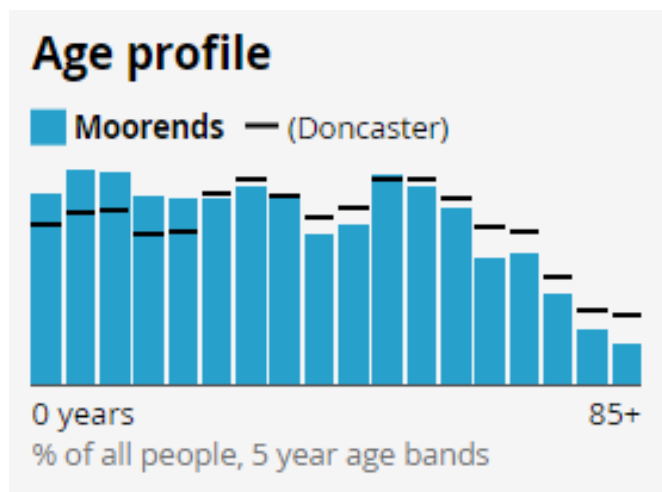


Figure 21. Age profile of Moorends

Demographics (Ethnicity, Language, and Religion)

Moorends residents are predominantly of a White ethnic background (97.2%), higher than Doncaster (93.1%) and England (81.0%) figures. 0.3% of the population are Black, Black British or Black Welsh, Caribbean or African, this is lower than Doncaster (1.2%) and England (4.2%) figures. 1.0% are Asian, Asian British or Asian Welsh, lower than Doncaster (2.9%) and England (9.6%) figures). The predominant language in Moorends is English, with 92.9% using this as their main language.

Just under half of residents in Moorends are of Christian religion (49.4%), this is higher than the England rate of 46.3%. 44.2% of residents are of no religion, and only 1.3% of residents classify as being Buddhist, Hindu, Muslim, Sikh or other.

Housing

Housing conditions and the surrounding environment can have profound impacts upon residents' health and exacerbate health inequalities. The data below explores several variables to analyse housing in Moorends.

There are 2,100 households in Moorends. Data shows that 19.6% of houses are socially rented, this is higher than Doncaster (17.0%) and England (17.1%). 35.8% of households are owned outright, higher than Doncaster (33.6%) and England (32.5%). Most households comprise of either 3 people (20.2%) or 4 or more people (17.1%), this fits in line with a large number of children and young people in Moorends.

Census data (2021) suggests that households in Moorends are more likely to be overcrowded, rather than under-occupied. This can be seen in the infographics below.

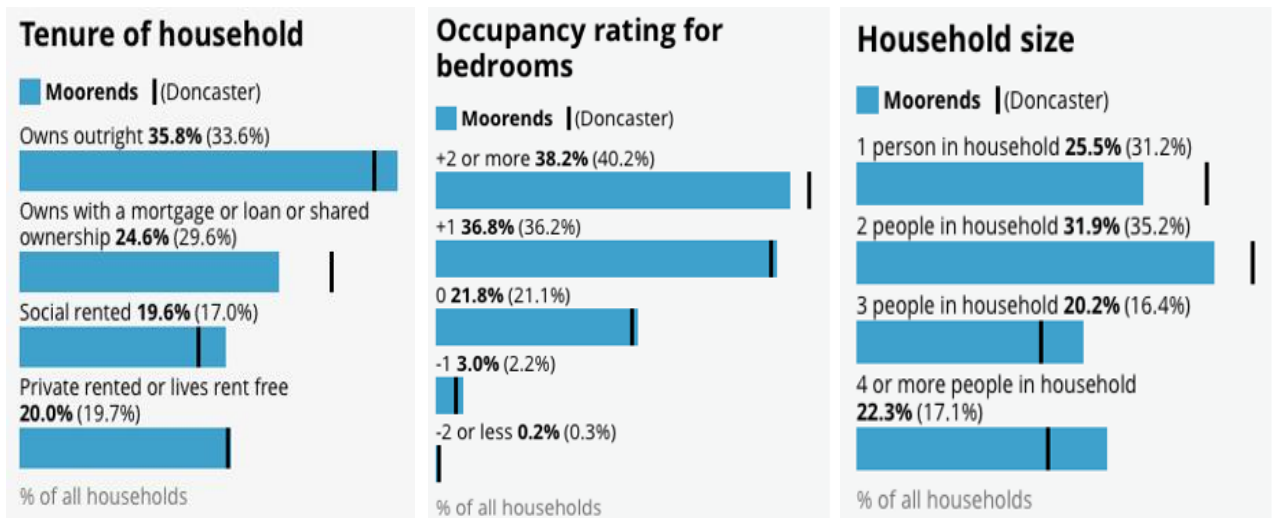


Figure 22. Household statistics in Moorends (Census 2021)

Whether a household's accommodation is overcrowded, ideally occupied or under-occupied, is calculated by comparing the number of bedrooms the household requires to the number of available bedrooms.

An occupancy rating of:

- -1 or less implies that a household's accommodation has fewer bedrooms than required (overcrowded)
- +1 or more implies that a household's accommodation has more bedrooms than required (under-occupied)
- 0 suggests that a household's accommodation has an ideal number of bedrooms.

St Leger Homes is the main provider of Social Housing in Doncaster. St Leger homes own 345 properties in Moorends. This comprises of 63 bungalows and 282 houses. The majority of those who rent these properties are aged 26-65 years.

The total rent arrears from those living in St Leger properties in Moorends was £57,042 in 2022/23, this increased from £41,102 in 2021/22.

The map below highlights where the highest prevalence of social housing is located within Moorends (represented by a darker colour). This area fits in line with previous maps that outlined it as having the highest proportion of households that are deprived in three dimensions, the highest levels of adults with no qualifications, and the highest levels of long-term unemployment.

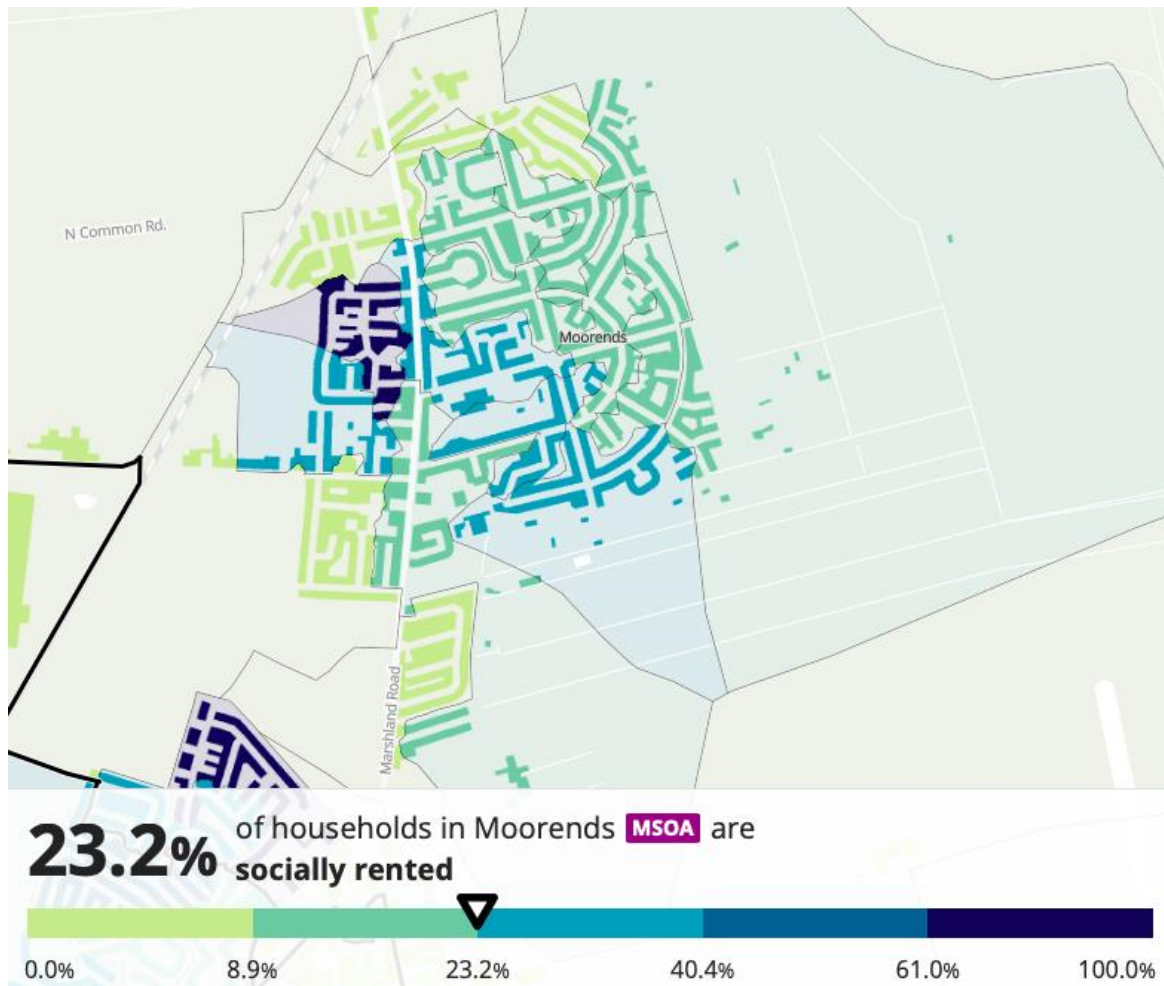


Figure 23. Socially rented households (Census 2021)

Antisocial Behaviour

Doncaster Stronger Communities Service looks to tackle all forms of anti-social behaviour, Hate Crime and lower level community safety within neighbourhoods. The East team are responsible for working in partnership with a range of agencies to deliver a joined up approach that addresses needs identified within an area as well as more cross cutting and complex work around community tensions and cohesion. The Thorne & Moorends Ward is one of five wards aligned to the Stronger Communities Team.

Data on the number of early interventions, ASB, hate crime and low-level crime issues identified and managed in the East locality show 1551 cases. Of these, 347 incidents were in the Thorne & Moorends ward, the 2nd highest rate following Stainforth & Barnby Dun. These are issues that are purely dealt with by Stronger Communities Officers prior to any other agency/multi-agency involvement in the true sense of early intervention and thus preventing escalation and involvement from other, more costly services.

Antisocial behaviour incidents by ward highlighted Thorne & Moorends as having the 2nd highest rate in the East locality at 74, following Hatfield at 110. This is shown in the infographic below.

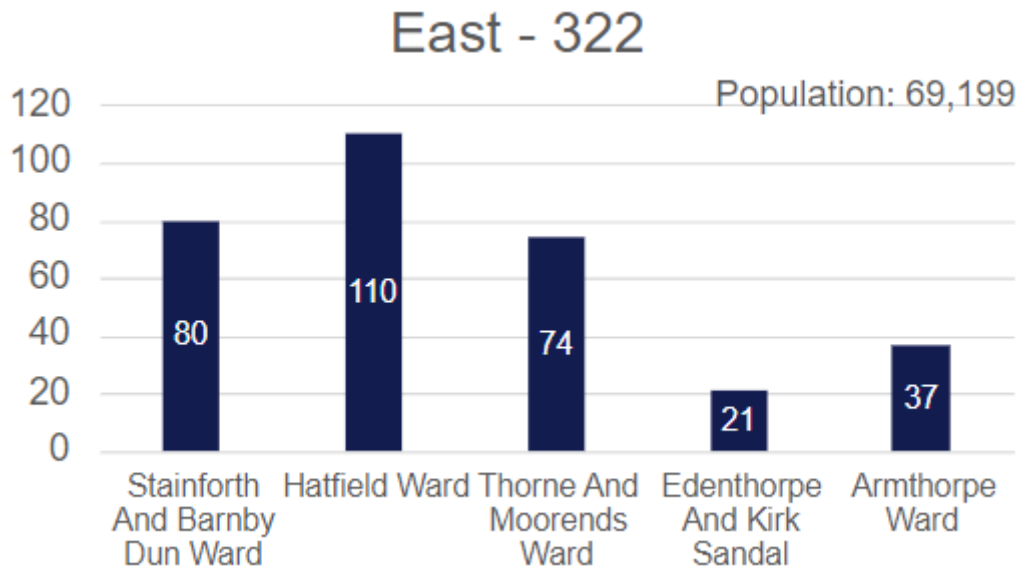


Figure 24. ASB Incidents by Ward (Partnership ASB ward level performance 2023/24)

Vulnerable Victims

The number of vulnerable victims for each Locality is also recorded. These figures represent individuals affected by repeat incidents of ASB. The below shows that the East locality had the highest rate of vulnerable individuals, at 82. Thorne & Moorends had the 2nd highest rate across the locality (17), following Stainforth & Barnby Dun (36).

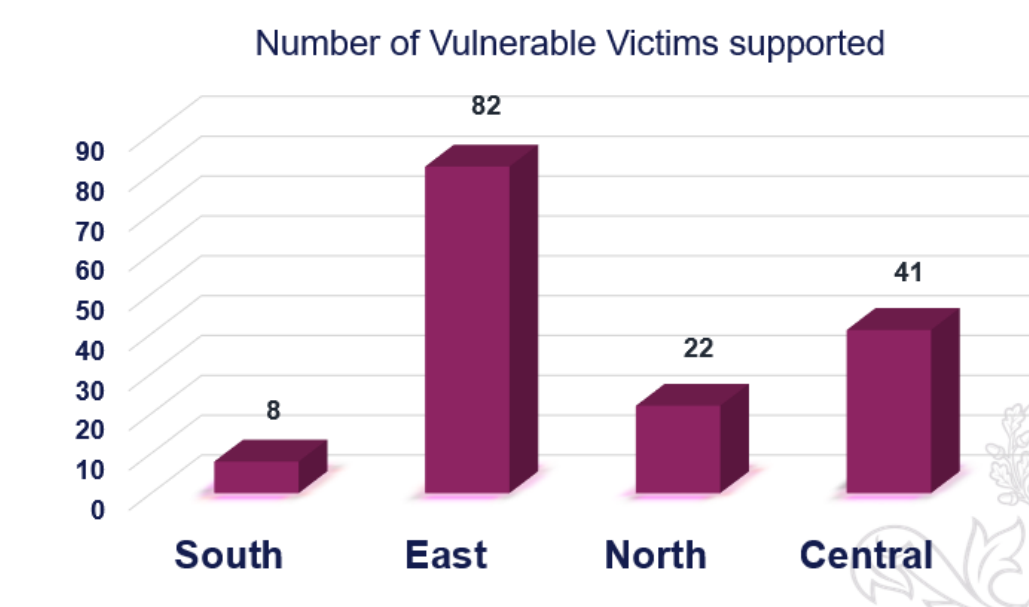


Figure 25. Vulnerable Victims by Locality (Partnership ASB ward level performance 2023/24)

Community Insight

Appreciative Inquiry

Appreciative Inquiry (AI) is a strength-based approach to understanding what is working well. It involves asking a series of structured questions which are analysed to identify themes that can be used to create positive change. The questions seek to understand past and present successes to help plan and create a bright and positive future. Used in a community setting, the process consists of four phases:

1. **Discovery Phase** – This will involve engagement with the residents of Moorends to find out what is working well in the community. Responses will be themed to allow priorities of the community to be established.
2. **Dream** – Residents and key stakeholders will be invited to attend an initial workshop to discuss what ideas they have for their community and how these will meet the priorities highlighted in the discovery phase.
3. **Design** – All attendees are invited back for a second workshop to develop an action plan for community action.
4. **Deliver** – A collaborative way of working and investing resources in working towards the actions from the design phase.

The Well Doncaster Team undertake Appreciative Inquiry every year to ensure the voice of the community is heard and understood. Following the COVID-19 pandemic, this is more important than ever. As Armstrong (2020) demonstrates, through appropriate questioning, appreciative inquiry can help us move away from focusing on what is wrong, to capitalising on what is right to help strengthen and restructure communities. As communities look for the positives in their future, we hold up a mirror that shows them where the positive future lies – with them and their community.

In 2020, only the Discovery stage (online survey and face to face questions) and Dream stages were undertaken due to the COVID-19 pandemic. From this, the following four key priorities were identified:

Community Spirit	“Thorne and Moorends has good community spirit people pull together”
Good high street	“I like coming on the High Street and people watching”
Poor transport	“Transport into town is poor and difficult to access” (this is due to the decommissioning of the local minibus)
Friendly place to live	“The people are friendly”

In 2022, a full Appreciative Inquiry in Moorends was undertaken. Community conversations highlighted residents in Moorends wanted to be a standalone community, and not limited to Ward level. The table below outlines the key themes identified during the Thematic Analysis.

Community Spirit /togetherness	<i>"People and friendly people, walk along the street and people smile" MO4</i>
Community Cohesion	<i>"People pull together, would never move from here and allotments keeps me here" MO19</i>
Community Assets	<i>"There was a lady down the street today and she was collecting rubbish, she was very friendly and said hello everyone is like that" MO28 "Miner's welfare (lunch club), Somewhere to come and socialise, nice people who run it Nice people who come, good company, The staff that runs Moorends miners' welfare full community centre everything for the kids to adults" MO32</i>

In 2023, a full Appreciative Inquiry in Moorends was undertaken. The table below outlines the key themes identified during the Thematic Analysis.

Community	<i>'The friendliness in the community'</i>
Environment and Countryside	<i>'Lovely open spaces and green spaces including the woodland. Lots of community events to bring people together'</i>
Assets, Buildings and Services	<i>'Because I would be lonely and wouldn't be able to get out and about' (Moorends Miners Welfare)</i>

Doncaster Talks

In 2019, Doncaster Talks undertook insight across the City of Doncaster. Responses were separated into wards and thematically analysed.

Across the Thorne & Moorends ward 157 responses were received which equates to 0.90% of the ward. An overview of responses can be seen below.

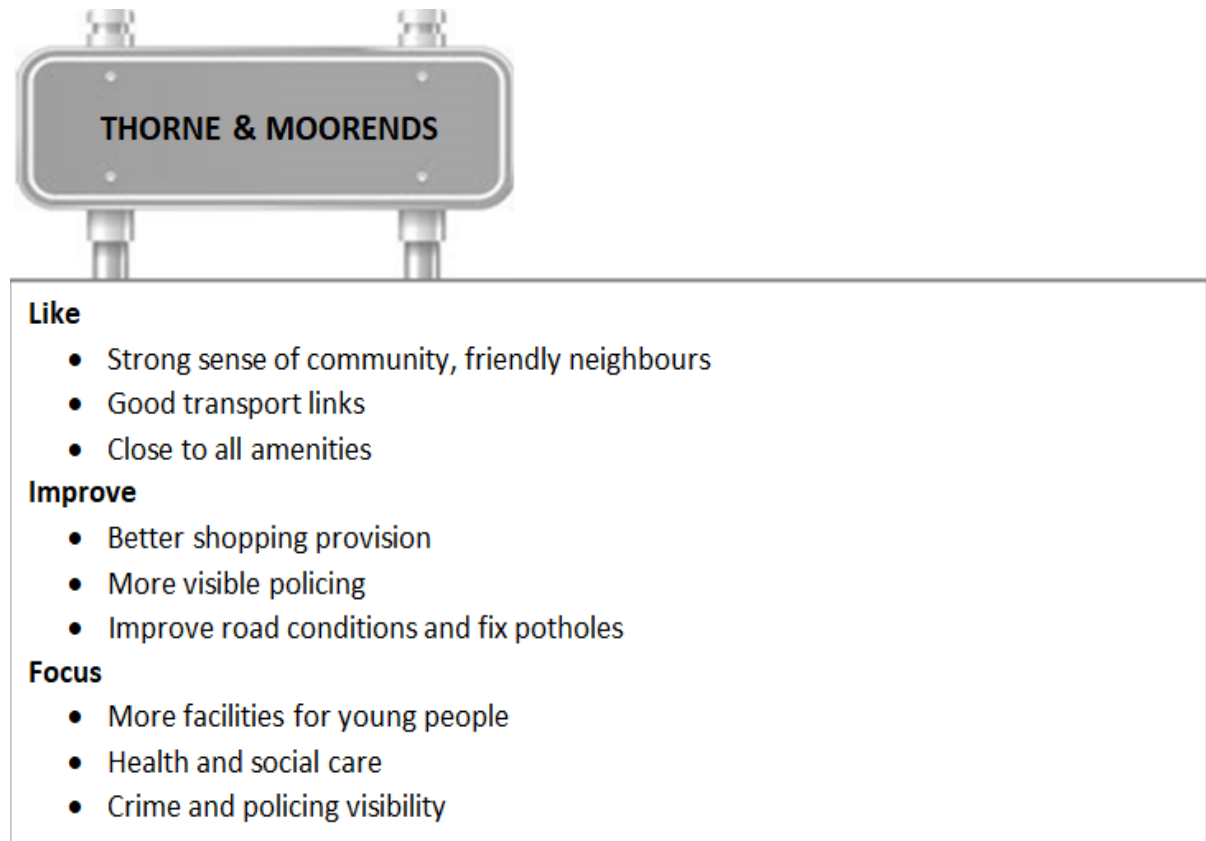


Figure 26. Doncaster talks responses

Locality Plan

Locality plans look at how we can together to strengthen communities and improve the lives and opportunities for residents living there.

The East Locality Plan has been developed in conjunction with residents and sets out what will be done to improve the community over the next 12 months. Communities were engaged with through a number of different ways:

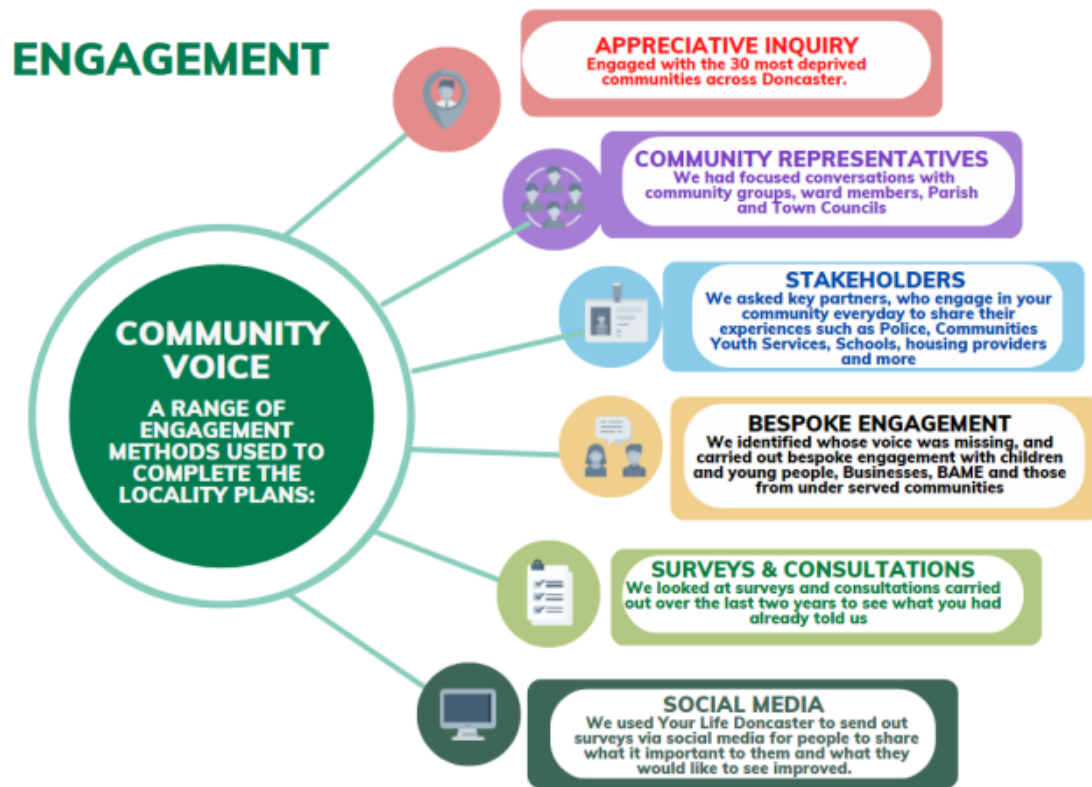


Figure 27. Community Voice engagement methods

The 2023-24 Locality Plan for the East Communities outlines a set of priorities and can be viewed using the following link [East Locality Plan 2023/24](#)

Appendix

Well Doncaster Annual reports

Well Doncaster Approach: <https://youtu.be/e1RKOZoGI10>

More information about how Well Doncaster has been meeting outcomes and objectives can be found in past and present annual report:

<https://welldoncaster.wordpress.com>

Census data 2021

The census is undertaken by the Office for National Statistics every 10 years and gives us a picture of all the people and households in England and Wales.

[Build a custom area profile - Census 2021, ONS](#)

[Census Maps - Census 2021 data interactive, ONS](#)

Public Health Data

Fingertips

This is a new fingertips profile that uses data from Local Health an existing PHE data tool. Local Health is a collection of quality assured health information presented for small geographical areas. By presenting data for small areas, Local Health provides evidence of inequalities within local areas. It supports targeted interventions to reduce such inequalities.

Local Health contains indicators related to:

- Population and demographic factors
- Wider determinants of health
- Health outcomes

It presents data for middle super output areas (MSOA), electoral wards, clinical commissioning groups (CCG), local authorities, and England as a whole.

Please note, as the Local Health tool was designed to allow users to map small area data, a mapping option has not been provided in this profile.

<https://fingertips.phe.org.uk/profile/local-health/data#page/0>

[Local Health - Public Health England - Reports: get a dashboard on a custom area](#)

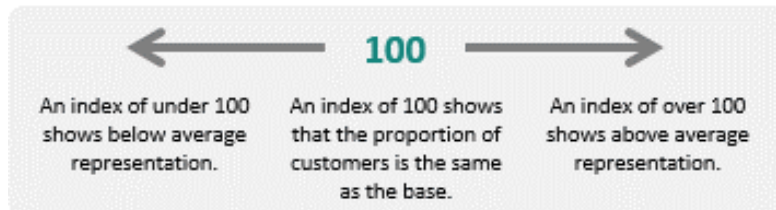
Acorn profiles

Wellbeing Acorn segments the population into 4 groups (Health Challenges; At Risk; Caution; Healthy) and 25 types describing the health and wellbeing attributes of each postcode across the country. By analysing significant social and health related behaviour, it provides precise information and an in depth understanding of upstream issues affected by current lifestyle traits

INTERPRETING THE REPORT

The Wellbeing Acorn profile report helps you understand the underlying demographics, lifestyle and health attributes of your customers and service users by comparing their Wellbeing Acorn profile to a base (e.g. UK population, area or other customer groups).

INDEX



The Wellbeing Acorn Profile contains 12 variables that are indicators of Disability or Infirmity in the population and 9 variables related to unhealthy Behaviours. The average score measured against the base profile of Yorkshire and the Humber is 100. A value above 100 indicates that the area population is overrepresented for this characteristic, below 100 the value is less than the average or under represented.

Get Doncaster Moving survey

<https://getdoncastermoving.org/uploads/dmbc-phase-1-summary-report-final.pdf?v=1558622409>

Mosaic data

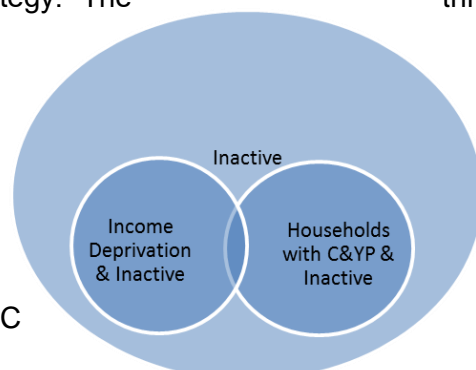
Mosaic Public Sector classifies the UK population into one of 66 types and 15 groups through a detailed and accurate understanding of each citizen's demographics, lifestyles, behaviours and location.

The Physically Inactive Population of Doncaster

The MOSAIC types who “Do not exercise” and “Do not take part in Sport” were searched and three priority groups have been identified through work with strategic partners as part of the development of Doncaster's Physical Activity Strategy. The three priority groups are:

- The Inactive
- Families with children and young people
- People living in income deprivation

These groups are cross-referenced against the inactivity list allowing for the identification of MOSAIC



types which are both likely to be inactive and living in deprivation as well as inactive and from households with children and young people.

Link to the Get Doncaster Moving strategy; [Let's Get Moving! | Get Doncaster Moving](#)

Pupil Lifestyle Survey 2022

[Pupil Lifestyle Survey - Healthy Schools \(healthylearningdoncaster.co.uk\)](http://healthylearningdoncaster.co.uk)

Power BI – Joint Strategic Needs Assessment

The Joint Strategic Needs Assessment (JSNA) is a process that identifies the current and future health and wellbeing needs of a local population. The dashboards show information about the employment, health, and wellbeing of people in Doncaster. We use this information to inform our policies and strategies to improve the lives of everyone in the Doncaster area.

[Joint Strategic Needs Assessments - Team Doncaster](#)

