

Thorne Community Profile Well Doncaster



Well Doncaster

Community Led Health and Wealth

Empowering people in Doncaster to live better, healthier, and happier lives.

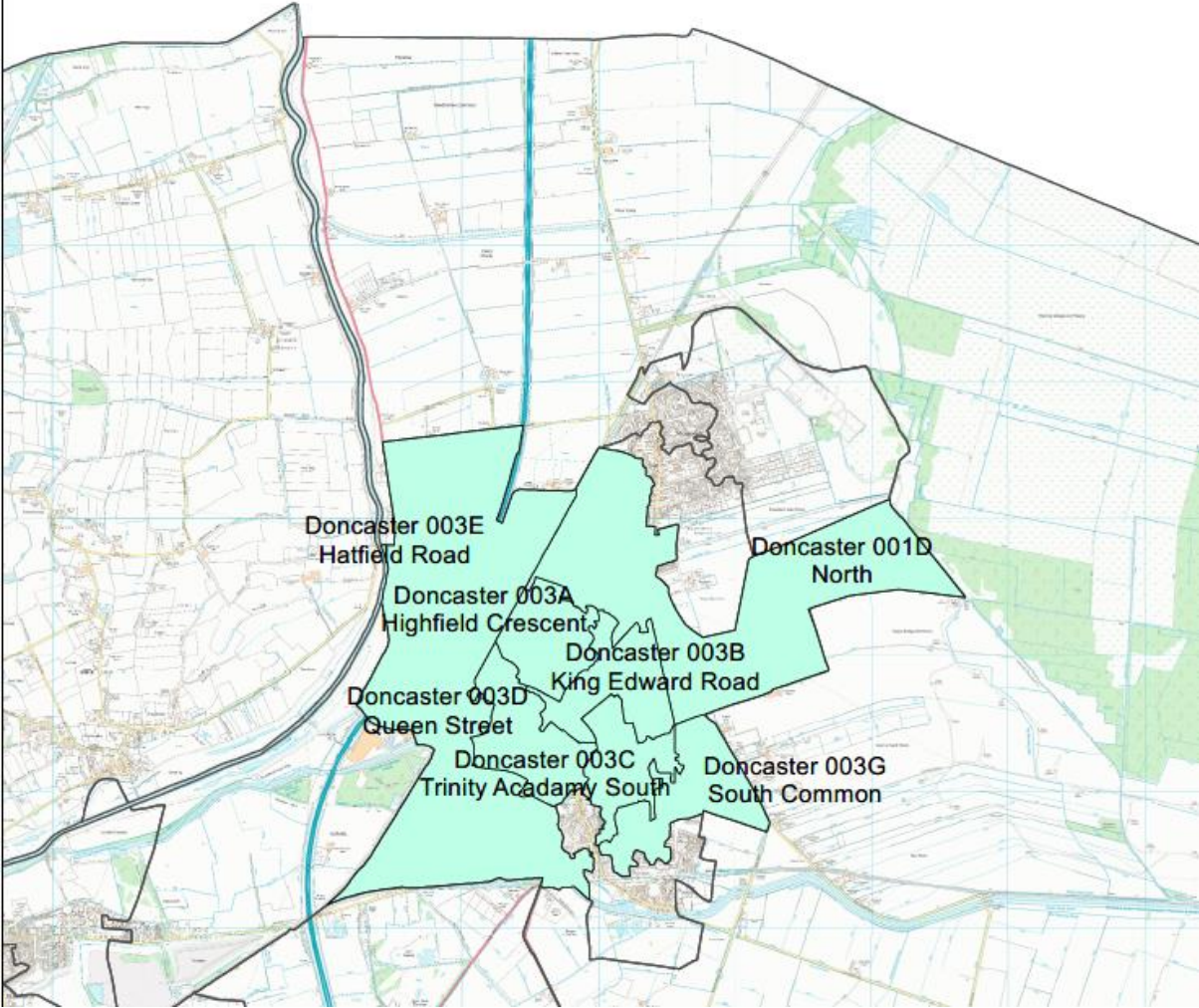
www.welldoncaster.uk

Well Doncaster
**Community
Wealth Builder**

Well Doncaster
Be Well

 **City of
Doncaster
Council**

Thorne LSOA



Contents

| | |
|--|-----------|
| This Report | 5 |
| One Page Summary | 7 |
| Key Health Priorities | 7 |
| Assets | 8 |
| | 9 |
| Ward Members | 15 |
| Health and Wealth | 16 |
| Deprivation | 16 |
| Wealth inequalities..... | 17 |
| Employment | 18 |
| Fuel poverty..... | 19 |
| Food Poverty..... | 19 |
| Citizen’s advice Doncaster Borough | 20 |
| Health Inequalities | 21 |
| Childhood Development..... | 21 |
| Obesity Levels | 21 |
| School Attainment | 23 |
| Long Term Health Conditions..... | 23 |
| Life Expectancy | 24 |
| Smoking..... | 24 |
| Alcohol Consumption..... | 25 |
| Physical activity | 25 |
| Active Travel | 26 |
| Population Health Management..... | 26 |
| Community Information | 27 |
| Population..... | 27 |
| Ethnicity and Language..... | 27 |
| Housing..... | 27 |
| Stronger Communities | 28 |
| Antisocial Behaviour | 28 |
| Vulnerable Victims | 29 |
| Community Insight | 30 |
| Appreciative Inquiry | 30 |
| Doncaster Talks..... | 31 |
| Locality Plan..... | 32 |
| Community Investment..... | 33 |

| | |
|-------------------------|-----------|
| References | 34 |
| Appendix | 35 |

This Report

This report focuses on the community of Thorne which is in the same Ward as Moorends in the East of the City and begins with a summary outlining key information and priorities. Data for Thorne only is used where possible. Where this is not possible ward level data has been used.

This document builds on the initial conversations with communities, including ward members, community organisations, faith groups, residents and other organisations who work in the area. Communities' knowledge of their own areas enables them to identify their strengths and the assets on which they can build on. This document is shared with the intention of supporting those conversations and sharing information that might not be readily available to local people.

Thorne



Second lowest life expectancy for Women



26.2% of Children Live in Poverty



Heart Disease is the Leading Cause of Death



18.6% of House are Socially Rented



29.2% of residents have no qualifications



Residents of all ages are **inactive**

One Page Summary

Moorends is part of the Thorne & Moorends electoral ward, located in the East of the city. It is an outlying village within the East locality. Thorne is predominantly White British (97.7%), significantly higher than Doncaster (93.1%) and England (81.0%).

Life expectancies in males (75.93 y) and females (78.88 y) living in Thorne and Moorends ward is significantly lower than Doncaster (*m*: 77.9, *f*: 81.3) and England (*m*: 79.5, *f*: 83.2). The life expectancy for women is the second lowest in the borough.

2.8% of Thorne are not in employment in comparison to England (5%) and Doncaster (6.1%). Furthermore, 28.8% of resident's self-report as never worked in comparison to England (25.6%) and Doncaster (27.2%). There are higher rates of fuel poverty and children living in poverty in Thorne.

There is a high prevalence of heart disease. Circulatory disease, Strokes and Chronic Heart Disease (CHD) are the leading causes of all age and premature deaths in the community. Risk factors for heart disease, such as obesity and alcohol consumption, are also high. Thorne and Moorends ward have significantly high levels of emergency hospital admissions for Chronic Obstructive Pulmonary Disease (COPD) and heart disease and heart attacks.

In 2021/22 the data shows that 30.4% of children are overweight or obese at reception age in Thorne which is higher to Doncaster (26.1%) is significantly higher than England (22.6%). This increases to 48.8% in year 6 which is significantly higher to Doncaster (36.7%) and England (35.8%).

In 2019, the average GCSE attainment 8 score per pupil (out of 90) was 40.4 in Thorne, this is lower than Doncaster (44) and national (46.7) scores. In 2022 the results decreased to an average score of 41.7 but still lower than the Doncaster score of 45.2 and significantly lower than the national score of 48.8.

Most residents aged 16 years and over in employment in Thorne travel less than 10km to a place of work (33.9.0%), with a further 29.1% travelling 10-30km. The leading method of travel to the workplace is driving a car or van (60%) or being a passenger in a car or van (6.6%). The number of residents in Thorne that travel by active travel modes such as bicycle or walking (13.7%) is higher than the England (9.7%) and Doncaster (8.9%) rate.

Key Health Priorities

- Significantly high rates of a range of heart diseases and poor self-management of long-term health conditions leading to emergency hospital admissions
- Lifestyle behaviours including alcohol consumption and physical activity
- Significantly high rate of childhood obesity
- Low schools' attainment, particularly KS4
- Significantly high rate of children living in poverty and household fuel poverty

Assets

Well Doncaster uses a community centred approach which allows investment in supporting, working with, and empowering communities to facilitate a healthy community. The voice and role of our communities and taking a strength or assets-based approach to work with individuals, families and communities is crucial to the achievement of our overall vision.

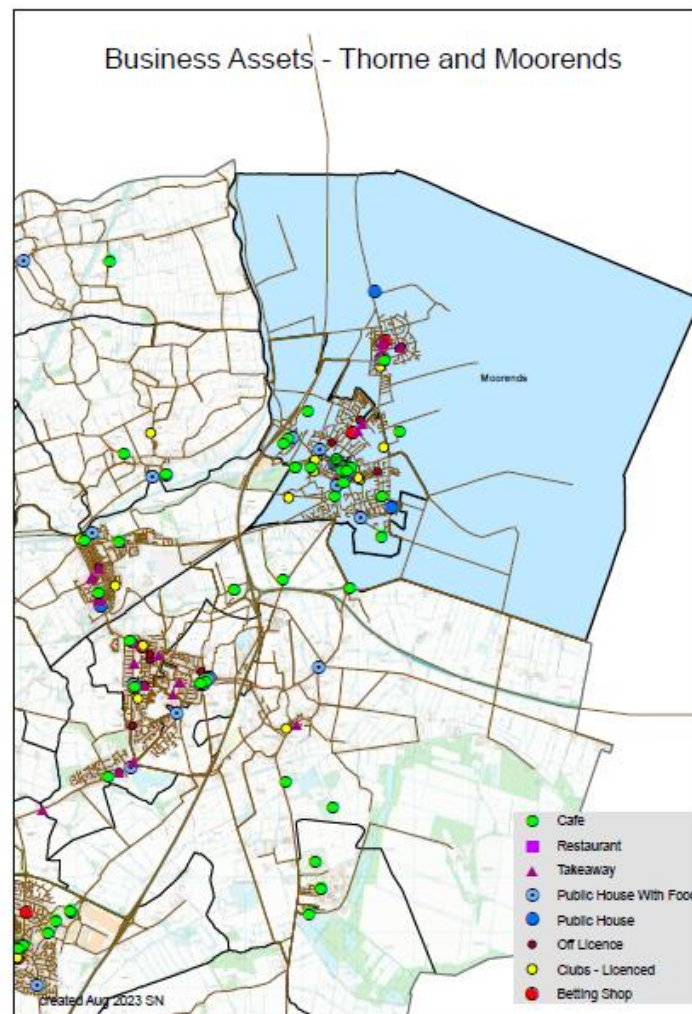


Figure 1. Thorne and Moorends Business Assets

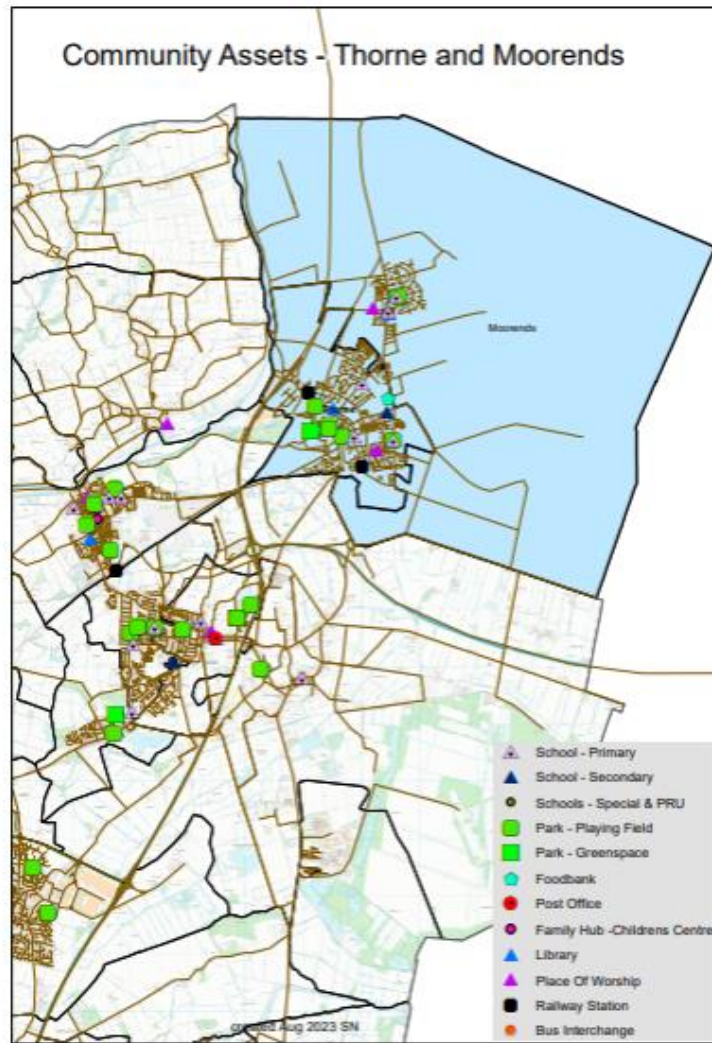


Figure 2. Thorne and Moorends Community Assets

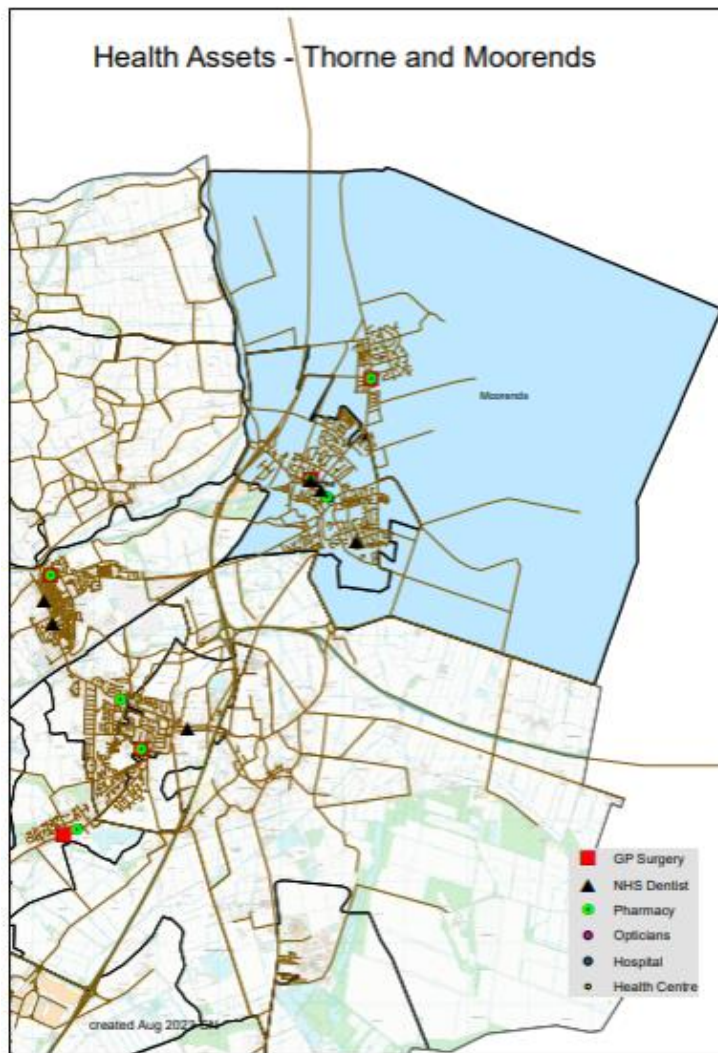
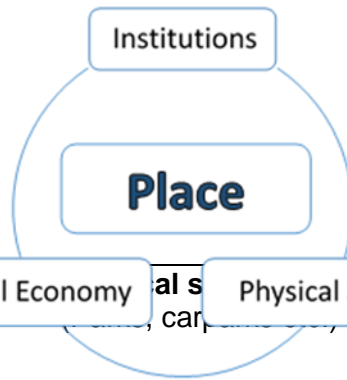


Figure 3. Thorne and Moorends Health Assets

As part of a population health management approach, the following assets have been identified and themed around places and people:



| Institutions (Schools/colleges etc.) | Local Economy (Local profit Businesses) | Physical Space |
|--|---|--|
| <p>Schools/Education:</p> <ul style="list-style-type: none"> • Thorne Green Top Primary • Thorne King Edward • Brooke Primary Academy • Trinity academy <p>GP:</p> <ul style="list-style-type: none"> • Thorne and Moorends Medical Practice • Northfield Surgery • Chestnut House Surgery • Field side dental practice • King street dental practice <p>Care Home:</p> <ul style="list-style-type: none"> • Harry Priestley House • Adeline House Care Home • Locker marsh Care Home • Northfield Care Centre • Care Home • King Street • Thorne House • Benfield House • Casson Court <p>Other:</p> <ul style="list-style-type: none"> • Thorne community library <p>Religious:</p> <ul style="list-style-type: none"> • St Nicolas Church • Thorne Pentecostal Church • Thorne Methodist Church | <p>Parks/Green Space:</p> <ul style="list-style-type: none"> • Coulman Pavilion • Wike Gate Road Park • Thorne Memorial Park • Thorne Community Woodland • Thorne Delves • Peel Hill Motte <p>Sport halls and community venues:</p> <ul style="list-style-type: none"> • Thorne Moorends Town Council • <i>Coulman Road Pavilion</i> • <i>The Assembly Rooms</i> • <i>Thorne OAP centre</i> • <i>The rugby clubhouse</i> | <ul style="list-style-type: none"> • Omega Boulevard/Quora Park Thorne • Day Lewis Pharmacy, • Weldricks Pharmacy • Boots Pharmacy • Moorends Post Office • Marine café • Nationwide narrow boat sales • Thorne boat service • Canal tavern • Kenyon son and Craddock in association with Henshaw pratt • Howarth timber and building supplies • Revolution laundry • Texaco co-op food and petrol • P Walkers butchers • Willa spoons • Bradbury's butchers • La pizza • Quinlan couture bridal • Lidl • Sainsburys • Aldi • B&M • McDonald's • King chambers • Screw fix • Tool station • KFC |

| Institutions (Schools/colleges etc.) | Physical space (Parks, car parks etc.) | Local Economy (Local profit Businesses) |
|--|--|---|
| | | <ul style="list-style-type: none"> • Taco bell • Marston's inn • Jungle mazeia • BMW • Shell • Subway • The punchbowl inn • Key Kars workshop |



| INDIVIDUALS (Key individuals within the community) | ASSOCIATIONS (Local Groups/Clubs) |
|--|--|
| <ul style="list-style-type: none"> • Ward Members <p>Community leaders:</p> <ul style="list-style-type: none"> • Volunteers in VCFS sector • Community Connector <p>Professionals:</p> <ul style="list-style-type: none"> • Well Doncaster officer • Be Well Officer • Locality Development Officer • St Leger • Communities team • Police Community Support Officers • PCN Neighbourhood Project <p>Coordinator</p> | <p>Social Groups:</p> <ul style="list-style-type: none"> • Moorends Miners Welfare • Thorne Library • Health Club, Body Combat, Thorne and Moorends Working Group, • Thorne & Moorends Healthy Living Group • Thorne & Moorends Youth Group • Kids Fitness Zone • Active Children's Zone • Good Buddies • Bridging Generations. • Monday Flyers • Ageing Well together • Sweaty Mamas • Thorne and District, Thorne OAP Welfare • Weight Watchers, • Over 60s Bingo • Derby & Joan Club • Stone gate Art Group • Over 60s Thursday Club • Tai Chi class • TAMARA Thorne & Moorends Rovers Association • The Rotary Club Of Thorne <p>Support:</p> <ul style="list-style-type: none"> • The Dementia Café • Family Support Group for the Disabled • Mother and Toddler Group • First Routes • Moorends Allotment Society • Clouds Community Counselling Service • Moorends Stop Smoking Clinic • Tri health Spoke Clinic <p>Thorne Library:</p> <ul style="list-style-type: none"> • Knit and Natter Thorne |

| INDIVIDUALS (Key individuals within the community) | ASSOCIATIONS (Local Groups/Clubs) |
|--|--|
| | <ul style="list-style-type: none"> • Quilt Group • Art Group <p>TARAs:</p> <ul style="list-style-type: none"> • TARA South Common • TARA Palm Grove Court • TARA North Common <p>Physical Activity and Sport:</p> <ul style="list-style-type: none"> • Thorne Colliery FC, Recreation Ground • Thorne Colliery Juniors • Thornensians RUFC • Thorne Tigers Swimming Club • Club Leisure Centre • Throne Moor Marauders ARLFC (Rugby Union) • Junior Badminton • SSE Wildcats Girls • Windmill FC • Thorne Colliery Cricket Club • Thorne District Angling Association • Thorne Ramblers • Thorne Netball Club • Moorends Hornets & Stingers JFC <p>Others:</p> <ul style="list-style-type: none"> • TMCRFM Limited • Thorne & Moorends Community Radio • Thorne and Moorends Regeneration • Sea Cadets, • Old Peoples Centre • Best of Thorne • Thorne Local History • Moorends Local Association • St Johns Ambulance <p>Food Banks:</p> <ul style="list-style-type: none"> • Thorne and Moorends Foodbank • Moorends Miners Welfare and Community Development Centre |

Ward Members

The Thorne and Thorne ward has Three ward members:



Councillor Joe Blackham

Thorne and
Moorends
Labour
Portfolio Holder
for Highways,
Infrastructure and
Enforcement



Councillor Susan Durant

Thorne and
Moorends
Labour



Councillor Mark
Houlbrook

Thorne and
Moorends
Labour
Portfolio Holder
for Sustainability
and Waste



Health and Wealth

Health inequalities are avoidable differences across the population and between different groups within society. Health inequalities arise from the conditions in which we live, work and play. These conditions influence our opportunities for good health, how we think, feel and act, therefore shaping our health and wellbeing.

Deprivation

Evidence shows that people living in our most deprived areas face the worse health inequalities in relation to health access, experiences, and outcomes. Deprivation covers a range of issues and refers to unmet needs caused by a lack of resources, including but not limited to finances, housing, and education. It is measured in different ways including the Indices of Multiple Deprivation (IMD). Doncaster is within the 10% most deprived communities in England.

The map below shows Thorne is in the 31st most deprived community in Doncaster with an IMD Score of 30.69.

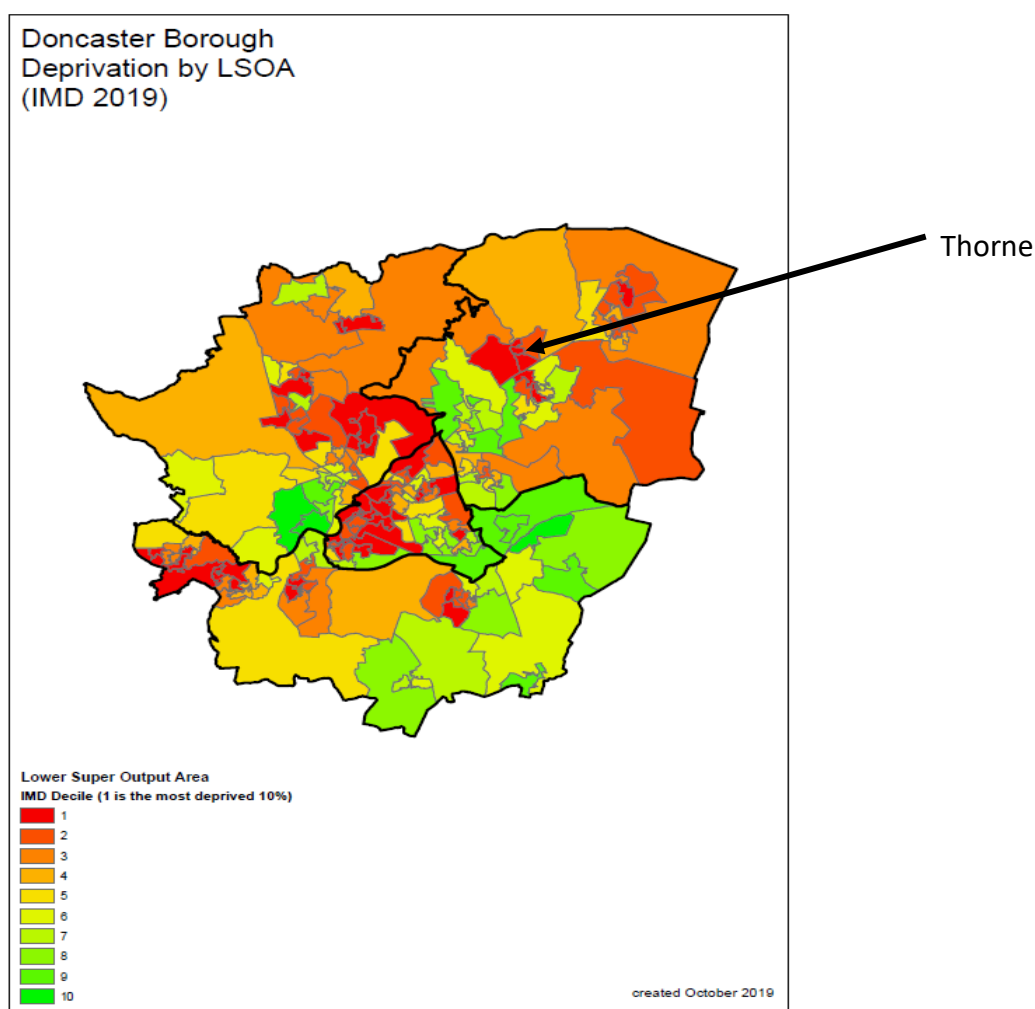


Figure 4. Doncaster borough deprivation by LSOA

Wealth inequalities

Public Health Fingertips data calculates the deprivation and household poverty rates at a ward level. Thorne and Moorends ward are significantly worse than England and Doncaster in all areas. Many Thorne and Moorends residents are currently living in poverty, which reflects the high level of multiple deprivation amongst communities. However, it must be noted that poverty rates do differ between communities and given that Thorne's data is taken at ward level it may not highlight the overall poverty rate in the Thorne community.

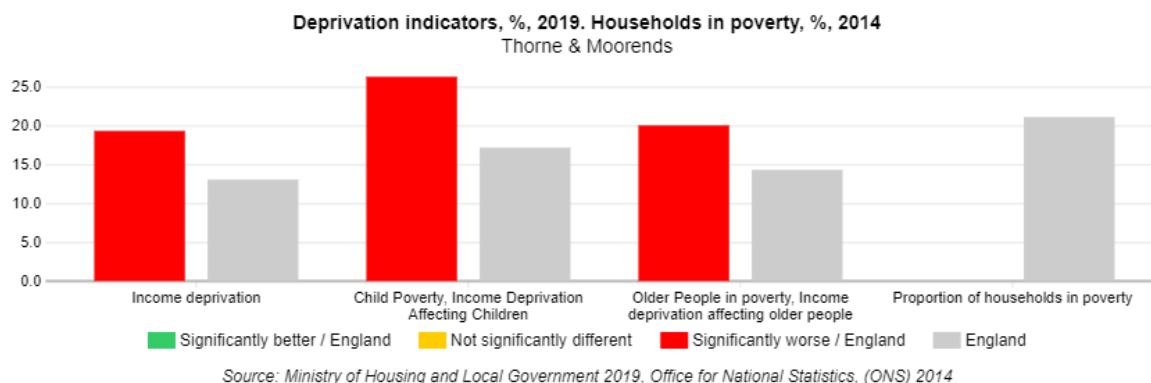


Figure 5. Deprivation indicators in Thorne and Moorends compared to England (Public Health England, 2019)
Figure 5- 10 most deprived communities in Doncaster

The data shows that 26.2% of children in the Thorne and Moorends ward are living in poverty, significantly higher than Doncaster (22.7%) and England (17.1%). There are also significantly more older people living in poverty in the ward (19.9% compared with Doncaster (15.9%) and England (14.2%).

The 2021 Census data has been used to produce estimates that classify households in England and Wales by four dimensions of deprivation: employment, education, health and disability and household overcrowding.

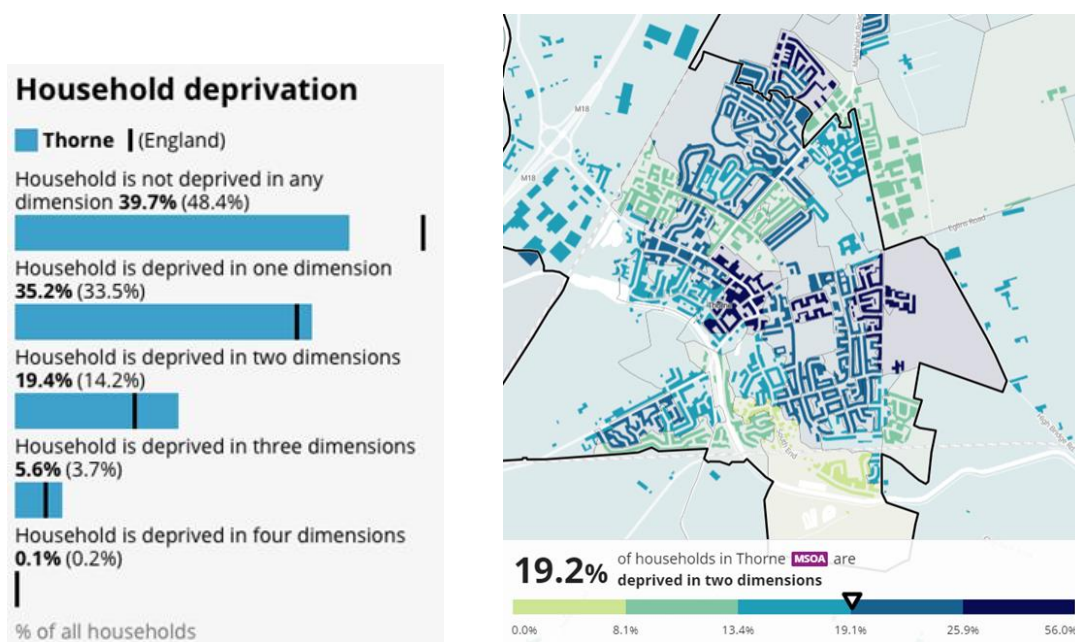


Figure 6. Household Deprivation in Thorne, Census 2021

39.7% of households in Thorne are not deprived in any dimensions which is lower than Doncaster (43.7%) and England (48.4%). Similarly, 19.4% of households are deprived in two dimensions, higher than Doncaster (16.7%) and England (14.2%) and households deprived in three dimensions (5.6%) are higher than Doncaster (4.6%) and England (3.7%).

Employment

According to the 2021 Census, 2.8% of Thorne are not in employment in comparison to the average of England (5%) and Doncaster (6.1%). Furthermore, 28.8% of resident's self-report as never worked in comparison to England (25.6%) and Doncaster (27.2%). This is also reflected in the high proportion of residents aged over 16 years of age (42.6%) who are economically inactive in comparison to Doncaster (41.7%) and England (39.1%). This is particularly high in the Miller Lane area where 39.8% of residents who aren't in employment have never worked.

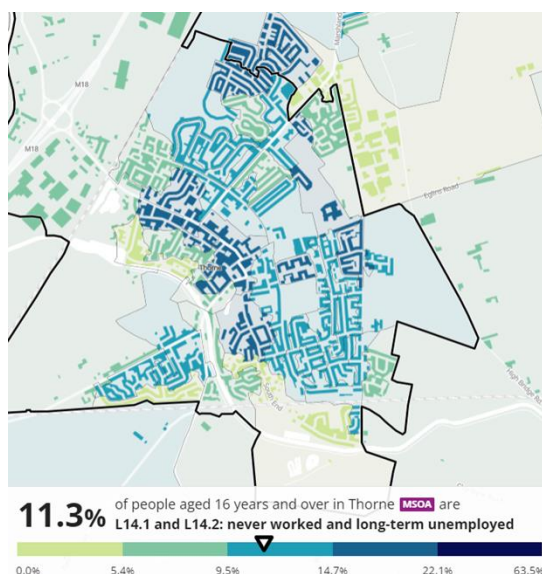


Figure 7. Percentage of People in Thorne aged 16 Years and Over: Never Worked and in Long Term Unemployment.

In Thorne, of those who are in work the majority work full time (66.4%), which is in line with Doncaster (60.7%) and England (59.1%) and 20.3% work part time, significantly less than Doncaster (28.9%) and England (29.8%). The most prevalent type of occupation is reported as elementary occupations (17%) and is slightly higher than Doncaster (16.5%) and England (10.5%). There are significantly more process, plant and machine operative occupations in the Thorne (12.5%) compared to Doncaster (10.3%). There are significantly fewer residents in professional (9.7%) and managerial (8.8%) roles compared to Doncaster with 12.8% and 10.2% respectively.

There are significantly few over 16-year-olds in Thorne (17.7%) with a Level 4 qualification compared to Doncaster (22.7%) and significantly more people in Thorne (29.5%) with no qualifications than Doncaster (24.6%).

Given the coronavirus pandemic was declared in early 2020 and this data was taken across 2021/22, rates of short-term unemployment may reflect the increased levels of job losses during this time. Work should be undertaken to increase residents' career aspirations and employability skill sets to improve employment chances.

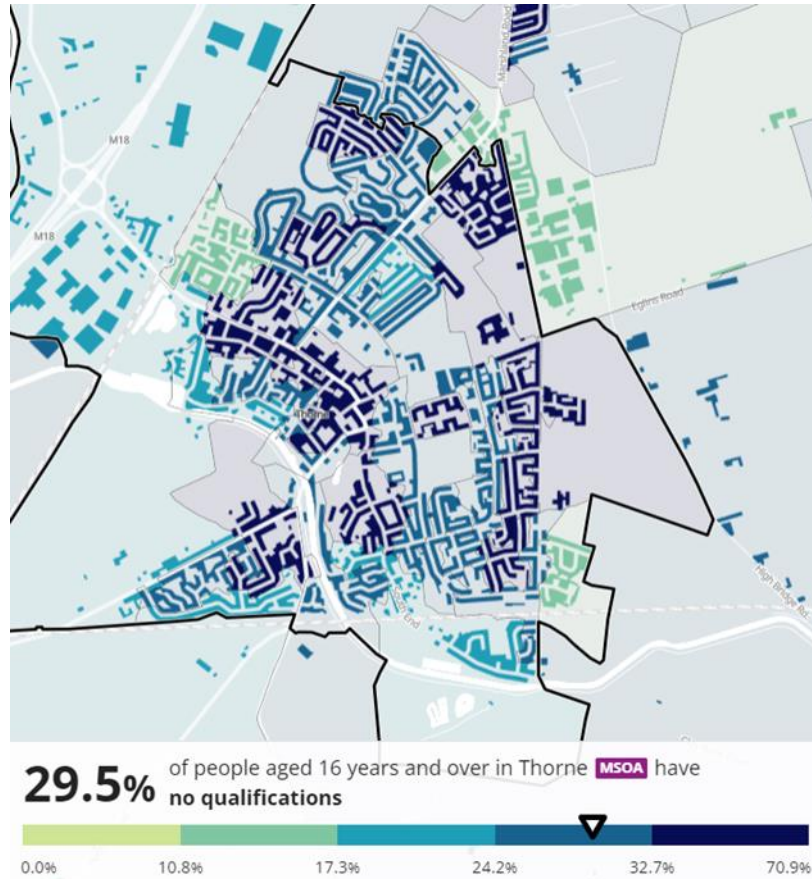


Figure 8. – Percentage of People Aged 16 Years and Over with No Qualifications

Fuel poverty

Fuel poverty is defined as a household living on a lower income which is not deemed reasonable enough to warm a home sufficiently. In Doncaster 18.1% of the population live in fuel poverty, this is significantly higher than England (13.1%). In 2020, 19.6% of adults were unable to warm their homes to a reasonable standard in Thorne and Moorends ward. Data taken at Middle Layer Super Output Areas (MSOA) level in 2020 suggests 18.4% of Thorne residents are affected by fuel poverty.

Food Poverty

There are 5 active foodbanks in the East locality of Doncaster, the closest foodbank to Thorne is located at the Moorends Minors Welfare. From April 2021 to September 2023, 1084 individuals and 820 families have accessed support from a foodbank across the East locality. The data is not captured to know how many of these are from Thorne. The top reported reasons residents in the East locality are accessing foodbank support are cost of living, low income and benefit changes and debt.

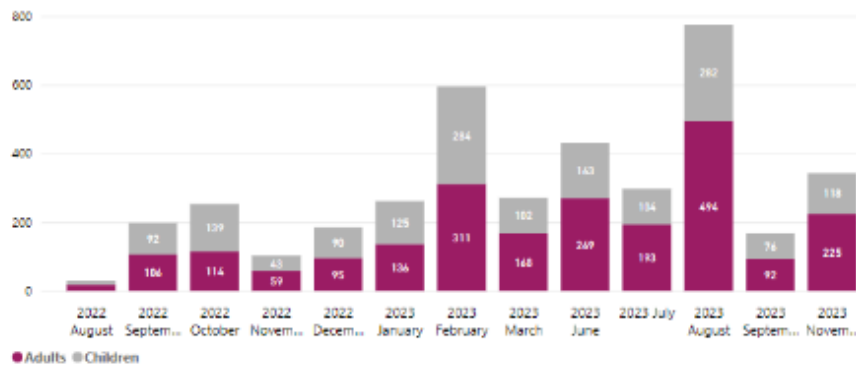


Figure 9. Numbers of Adults and Children Accessing Foodbanks in East Locality per Month

Citizen's advice Doncaster Borough

Citizen's advice Doncaster Borough (CADB) are an independent charity and part of the Citizens Advice Network across England and Wales. They provide free, confidential, and impartial advice and campaign on money, benefit, housing, or employment issues affecting people's lives. In 2022 Citizens Advice Doncaster Borough (CADB) established a network of community-based outreach sites where residents can access free, impartial information, advice, and guidance. The closest outreach site located at The Bridge Centre in Thorne. A total of 649 clients from Thorne and Moorends Ward have accessed support since April 2021. There has been a significant increase in the income gained by accessing support with the total amount of income gains more than doubled in the first two quarters of 2023-24 then the whole of 2021-23. The top issues that residents seek advice for is consistently for debt and benefit advice. In 2022-23 advice around utilities became the third top issue and has remained there for the thirist two quarters of 2023-24.



| Year | No. of Clients | Income Gains |
|--------------------------------|----------------|--------------|
| 2021-22 | 218 | £151,836 |
| 2022-23 | 249 | £210,709 |
| 2023-2024 (April-September) | 182 | £353,749 |

Figure 10. Number and postcodes of Citizens Advice Doncaster Borough Clients in Thorne and Moorends Ward, 2021-2023

Health Inequalities

Childhood Development

A child's early experiences are vital in providing the foundations for children to develop healthily and happily. Children being born into deprivation and living amongst deprivation in their early years are more likely to experience a wide range of health problems, fall behind their peers and face employment problems in adult life. The quality of early experiences is important as children develop, providing opportunity for motor (physical), intellectual (language and communication), cognitive and socio-emotional development.

The Income Deprivation Affecting Children Index (IDACI) measures the proportion of all children aged 0 to 15 living in income deprived families. In Thorne, 22.1% of children are classed as living in child poverty, this is significantly higher than the England rate (17.1%), and higher than Doncaster.

Obesity Levels

In 2021/22 the data shows that 30.4% of children are overweight or obese at reception age in Thorne which is higher than Doncaster (26.1%) and significantly higher than England (22.6%). This increases to 48.8% in year 6 which is significantly higher than Doncaster (36.7%) and England (35.8%).

Healthy development milestones from early to middle childhood are monitored across Doncaster. Children classified as overweight (including obese) at reception age in Thorne and Moorends Ward (32.3%) this is significantly higher than the national (22.6%) and Doncaster figures (26.1%). Children classified as overweight (including obese) at Year 6 sees an increase to 40.4% in Thorne and Moorends Ward. This is higher than Doncaster (38.3%) and England (35.8%).

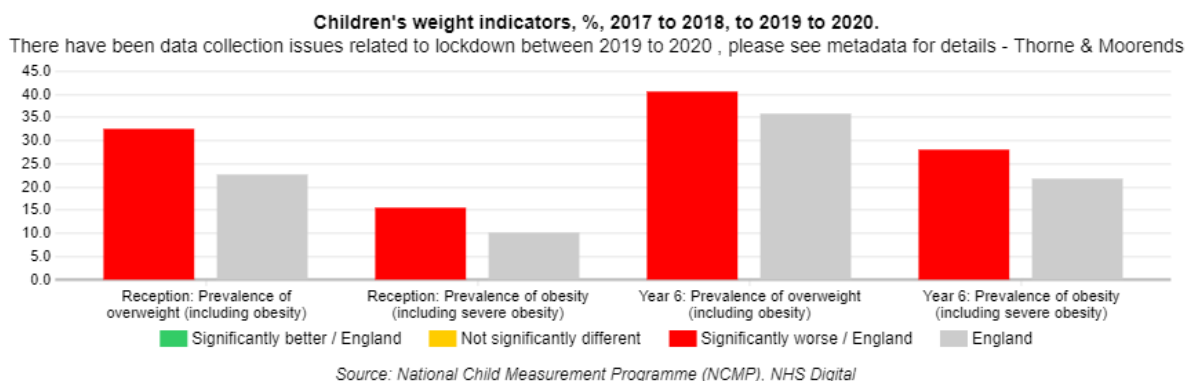


Figure 11. Childhood Weights in Percentages, Thorne and Moorends, NCMP

Emergency admissions in under 5s are lower in Thorne and Moorends Ward (81.2 per 1,000) than Doncaster (91.1 per 1000) and significantly lower than England (140.7 per 1000). Emergency hospital admissions for under 15-year-olds in the ward (169.6 per 10000) compared to Doncaster (161.6 per 10000) and Ward rates are significantly worse than England (127.9 per 10000).

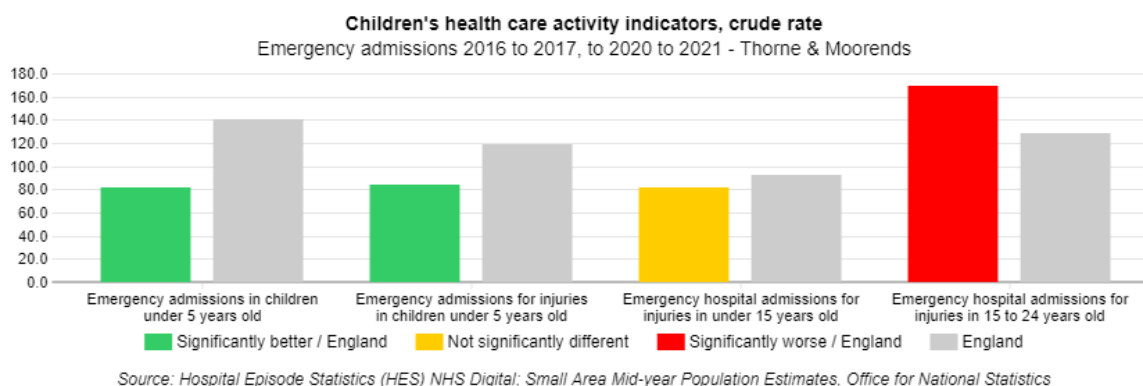


Figure 12. Children's Hospital Admissions, Thorne and Moorends

The Pupil Lifestyle Survey is conducted by City of Doncaster Council to provide valuable data on children and young people's health-related behaviour, through an anonymous school-based questionnaire. Data from the survey has provided a set of Doncaster-wide figures at key points in children and young people's development; KS2, 3 and 4. 246 pupils participated in the Thorne & Moorends ward, consisting of children in all age groups. It is important to note that the Pupil Lifestyle Survey is self-reported and may not have been completed by all the schools.

9% of children in the Thorne & Moorends ward reported having a disability, this was the 2nd highest rate across the city, following Armthorpe (10%) and higher than Doncaster (7%).

8% of children have Special Education Needs, lower than Doncaster (10%), and 32% receive extra help, lower than Doncaster (48%).

Only 78% of children reported that they have breakfast, this was the 2nd lowest rate across the city, following Norton and Askern. This was also lower than the Doncaster rate (86%). Furthermore, 22% of children receive free school meals, higher than the Doncaster rate of 19%.

The number of children in the Thorne & Moorends ward that feel warm and comfortable at home (99%), able to keep themselves clean at home (93%) and able to have a restful night's sleep at home (85%) were all higher than the Doncaster rates.

63% of children in the Thorne & Moorends ward are happy with life, this is amongst the lowest rates in the city and below the Doncaster rate of 67%. Only 43% feel able to share ideas to make things better at school, this is the lowest rate across the city – followed by the Norton & Askern ward at 47% - and below the Doncaster rate of 63%.

The Thorne and Moorends ward ranked the highest across all wards for having a nice, safe place at home or near home to play (93%) and was higher than the Doncaster rate of 87%. Furthermore, 92% of children reported feeling safe at home, again amongst the highest rates across the city.

Family hub membership in Thorne and Moorends was 77% in 2021-22 and dipped to 76% in 2022-23. In 2022-23, 71 children living the Thorne and Moorends were eligible for 2-year funding and taking a place. There were 8 families who are open for support from the Family hub services which include, Parent Engagement worker, Young Carers Practitioner and Family hub pathway worker. The total number of children aged under 5 years living in Doncaster and receiving targeted support with their development rose from 27 in 2021-22 to 41 in 2022-23.

School Attainment

At KS4, each pupil is given an Attainment 8 score (a score out of 90) based on their 8 best GCSE grades including English, maths and at least 3 other traditional academic GCSEs (sciences, languages, and humanities). Other qualifications at an equivalent level (e.g., BTECs) can also count towards the score. In 2019, the average GCSE attainment 8 score per pupil (out of 90) was 40.4 in Thorne, this is lower than Doncaster (44) and national (46.7) scores. In 2022 the results decreased to an average score of 41.7 but still lower than the Doncaster score of 45.2 and significantly lower than the national score of 48.8.

In 2023 for KS2, 52% of pupils achieved the expected standard in reading, writing, and mathematics in Thorne, an increase from 47% in 2022, but lower than pre-pandemic score of 60%. No data is available for 2020 due to the Covid-19 pandemic.

In Thorne there are 24 children registered in Elective Home Education and 10 children missing from education. It is important to note that when analysing children missing from education, that this is not a comprehensive list due to the nature of the data being collected

Long Term Health Conditions

In Thorne and Moorends ward, the number of people who report to be living with a long-term limiting illness (24.4%) is significantly worse than for England (17.6) and higher than Doncaster (21.7).

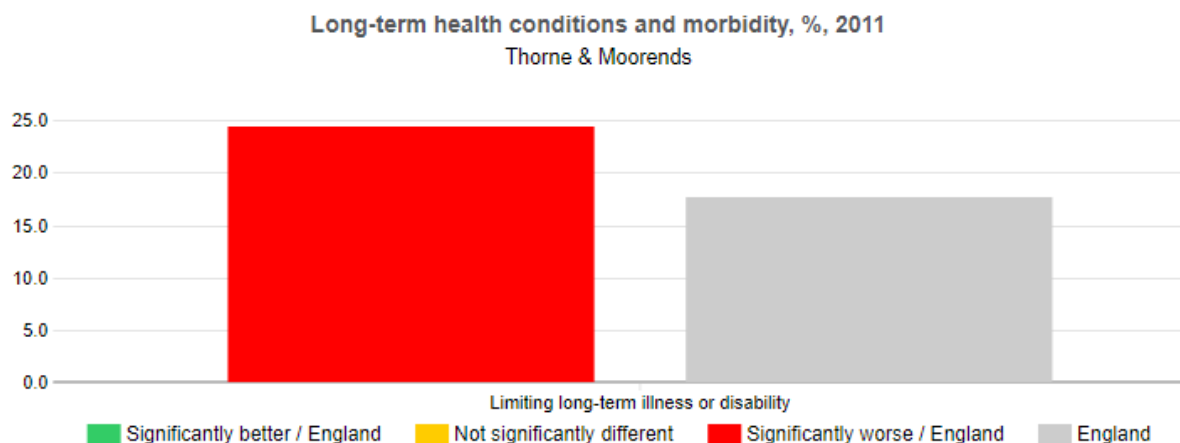


Figure 13. – Thorne Long term conditions from the Local health

The census data reported 41.4% of people in Thorne have very good health which is lower than England (48.5%) and Doncaster (44.3%). The percentage of residents reported as having bad health is 6.4%, higher than Doncaster 5.3%) and England (4.0%).

Thorne and Moorends ward have significantly high levels of emergency hospital admissions for Chronic Obstructive Pulmonary Disease (COPD) and heart disease and heart attacks. There is a high prevalence of lung cancer Thorne and Moorends ward) and a smoking prevalence of 5.4% is lower than Doncaster (6.8%).

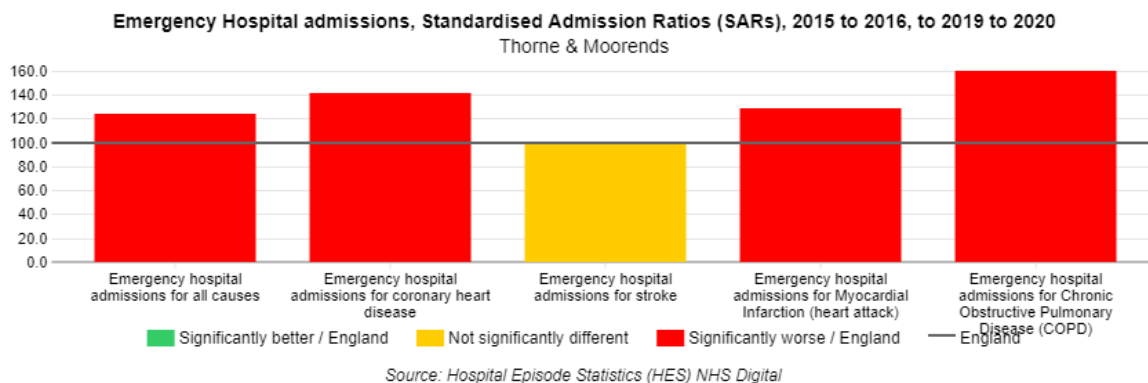


Figure 14. Emergency Hospital Admissions for Thorne and Moorends Ward

Another key health priority for Thorne is the prevalence of heart disease. Circulatory disease, Strokes and Chronic Heart Disease (CHD) are the leading causes of all age and premature deaths in the community. Risk factors for heart disease, such as obesity and alcohol consumption, are also high. Hospital admissions for alcohol attributable conditions Thorne are 119.1 per 100.0 which is higher than Doncaster 112.7 per 100.0.

Life Expectancy

Life expectancies in males (75.93 y) and females (78.88 y) living in Thorne and Moorends ward is significantly lower than Doncaster (*m*: 77.9, *f*: 81.3) and England (*m*: 79.5, *f*: 83.2). The life expectancy for women is the second lowest in the borough.

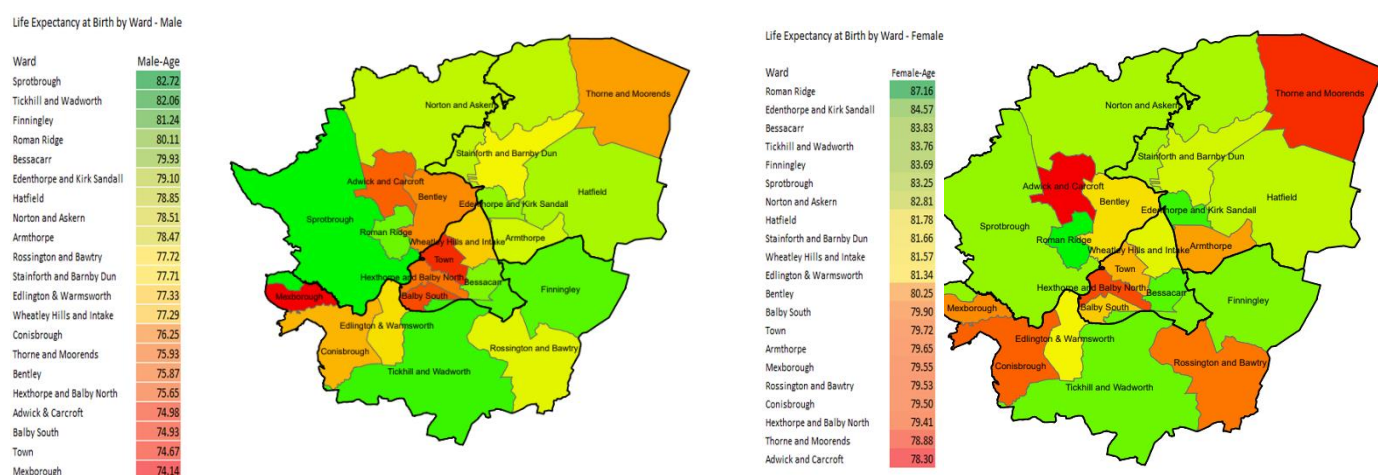


Figure 15. Life expectancy for Thorne and Moorends ward and Doncaster.

Smoking

Smoking status as self-reported by patients during registration at a GP practice is available for the East Primary Care Network (PCN) which covers Thorne. Data shows that Doncaster East PCN had a total sum of 10,139 smokers, with a prevalence of 17.17%. This is in line with the Doncaster average of 17.96%.

Alcohol Consumption

Alcohol specific admissions per 1000 population for the period April 2016 – July 2023 show that Thorne South Common had a high incidence rate at 51.97 / 1000, ranking amongst the highest in the East locality and in line with the Doncaster rate of 43.67.

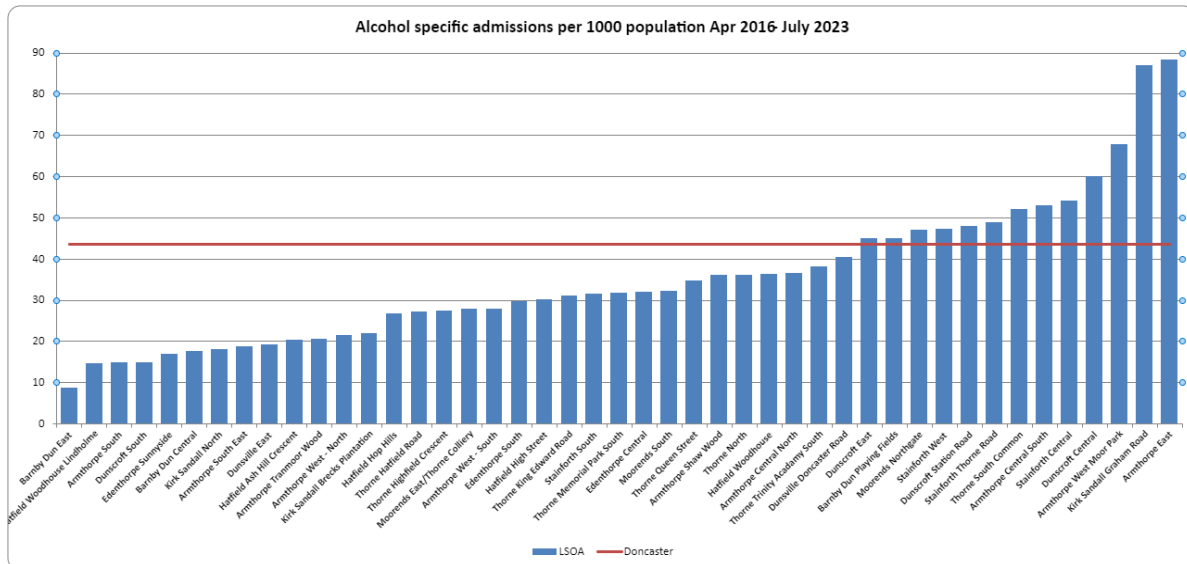


Figure 16. Alcohol specific admissions for East locality

Physical activity

It is known that Doncaster has more physically inactive adults, and fewer physically active adults than the national average. 28.9% of adults in Doncaster are physically inactive, this is significantly higher than the England rate (23.4%). Alongside this, the number of physically active adults in Doncaster is lower than the England rate, at 59.3% and 65.9% respectively.

The Mosaic map below shows where there are high numbers of inactive households across Doncaster. Data is mapped to LSOA however wards are shown and labelled for orientation. This data has been matched to the number of children and young people living in deprived and inactive households. It is known that Thorne has a moderate number of inactive households.

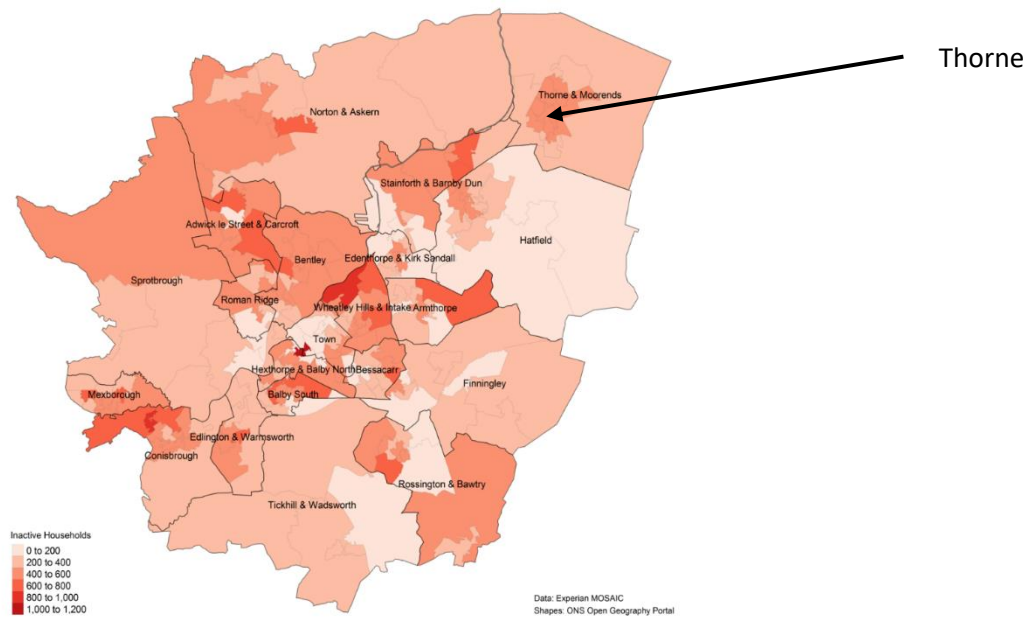


Figure 17. Levels of Inactivity across Doncaster

In the 2022 Pupil Lifestyle Survey, 60% of children reporting partaking in exercise that shows physical signs, this is higher than the Doncaster rate of 56%. However, only 70% reported enjoying physical activity, this was the lowest response across all wards in the city.

Active Travel

Census data (2021) shows that the majority of residents aged 16 years and over in employment in Thorne travel less than 10km to a place of work (33.9.0%), with a further 29.1% travelling 10-30km. The leading method of travel to the workplace is driving a car or van (60%) or being a passenger in a car or van (6.6%). The number of residents in Thorne that travel by active travel modes such as bicycle or walking (13.7%) is higher than the England (9.7%) and Doncaster (8.9%) rate.

Furthermore, the Pupil Lifestyle Survey showed that 54% of children in the Thorne & Moorends ward reported walking to school, this is higher than the Doncaster rate of 47% and ranked amongst the highest across the city.

Population Health Management

Covid-19 has had a huge impact on communities. It is vital to understand the effect and direction the pandemic has had on community organisation in the ward so that: 1) support can be offered and 2) work can be implemented to manage any gaps or risks associated with changes. To support the former, Well Doncaster officers undertake regular population health management insight with community organisations in Thorne, identifying their status and needs and work with each group to meet their goals. This is a living document and will be updated and adapted as needs are met and change. If you would like more detail on this, please contact welldoncaster@doncaster.co.uk

Community Information

Population

Thorne 12,300

The age composition of the population of Thorne is taken from the 2021 Census is generally in line with Doncaster. There are slightly fewer 35–44-year-olds and slightly more over 75-year-olds.

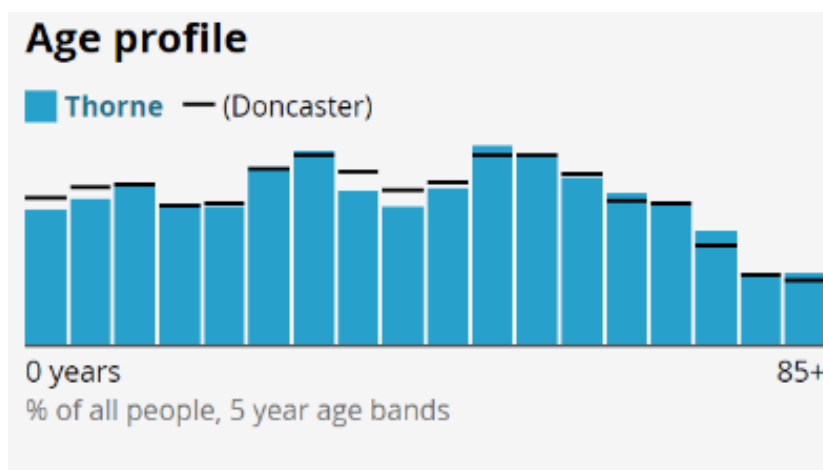


Figure 18 – Age profile of Thorne compared to Doncaster, 2021

Ethnicity and Language

Thorne continues to be predominantly White British (97.7%), significantly higher than Doncaster (93.1%) and England (81.0%). 0.4% of the population identified themselves as Black, Black British or Black Welsh, lower than Doncaster (1.2%) and England (4.2%). 0.6% identify as Asian, Asian British or Asian Welsh, lower than Doncaster (2.9%) and England (9.6%) In addition. Furthermore, 0.9% of residents are from mixed or other ethnic groups, significantly lower than Doncaster (1.5%) and England (3%). This aligns with a low number of residents in Thorne that cannot speak English well (1%), compared to Doncaster (1.4%) and England (1.6%).

Housing

Housing conditions and the surrounding environment can have profound impacts upon residents' health and exacerbate health inequalities.

The 2021 census data shows that 18.6% of houses in Thorne are socially rented, this is higher than Doncaster (17%), residents who owns their homes with a mortgage or loan or shared ownership 28.2% which is lower than Doncaster 29.6%. 89.3% of homes in Thorne is a whole house or bungalow, this is higher than the Doncaster 89.3%

The majority of homes in Thorne are three-bedroom properties (57%), significantly higher than Doncaster (53.2%) and there are significantly fewer 4-bedroom houses (10.9%) compared to

Doncaster (16%). The majority of households comprise of 1 (31.4%) and 2 person households (34.9%).

St Leger Homes is the main provider of Social Housing in Doncaster. St Leger homes own 881 properties in Moorends. This comprises of mainly 2-3 bed properties. The majority of those who rent these properties are aged 46-65 years.

The total rent arrears from those living in St Leger properties in Thorne was £91,301 in 2022/23, this increased from £61,102 in 2021/22.

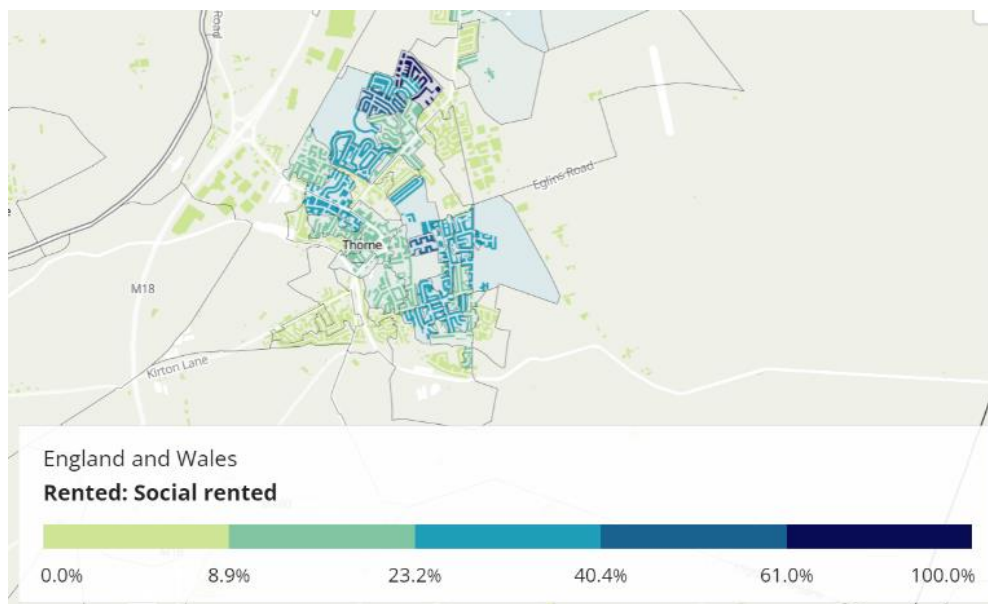


Figure 19. Map of Socially Rented Properties in Thorne, Census 2021

Stronger Communities

Antisocial Behaviour

Doncaster Stronger Communities Service looks to tackle all forms of anti-social behaviour, Hate Crime, and lower-level community safety within neighbourhoods. The East team are responsible for working in partnership with a range of agencies to deliver a joined-up approach that addresses needs identified within an area as well as more cross cutting and complex work around community tensions and cohesion. The Thorne & Moorends Ward is one of five wards aligned to the Stronger Communities Team.

Data on the number of early interventions, ASB, hate crime and low-level crime issues identified and managed in the East locality show 1551 cases. Of these, 347 incidents were in the Thorne & Moorends ward, the 2nd highest rate following Stainforth & Barnby Dun. These are issues that are purely dealt with by Stronger Communities Officers prior to any other agency/multi-agency involvement in the true sense of early intervention and thus preventing escalation and involvement from other, more costly services.

Antisocial behaviour incidents by ward highlighted Thorne & Moorends as having the 2nd highest rate in the East locality at 74, following Hatfield at 110. This is shown in the infographic below.

Stronger communities' data shows the vulnerable victims in the East area of Doncaster. As seen in the graph below the number of vulnerable victims that are being supported by the

Stronger Communities team. East area of Doncaster has the highest number compared to the other localities.

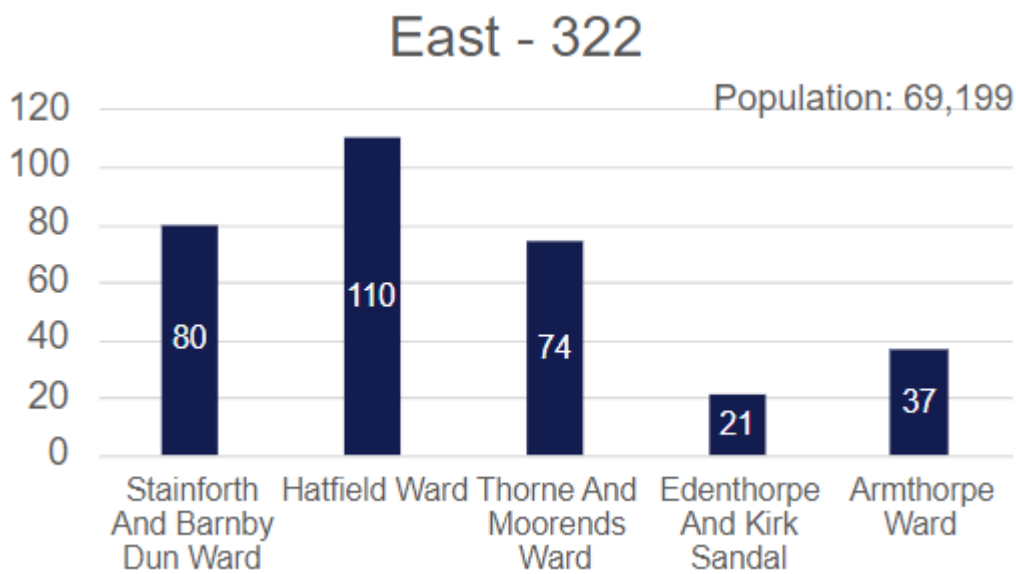


Figure 20. Number of early interventions, ASB, hate crime and low-level crime issues identified and managed at Ward level (Stronger Communities, Doncaster Council 2023/24)

Vulnerable Victims

The number of vulnerable victims for each Locality is also recorded. These figures represent individuals affected by repeat incidents of ASB. The below shows that the East locality had the highest rate of vulnerable individuals, at 82. Thorne & Moorends had the 2nd highest rate across the locality (17), following Stainforth & Barnby Dun (36).

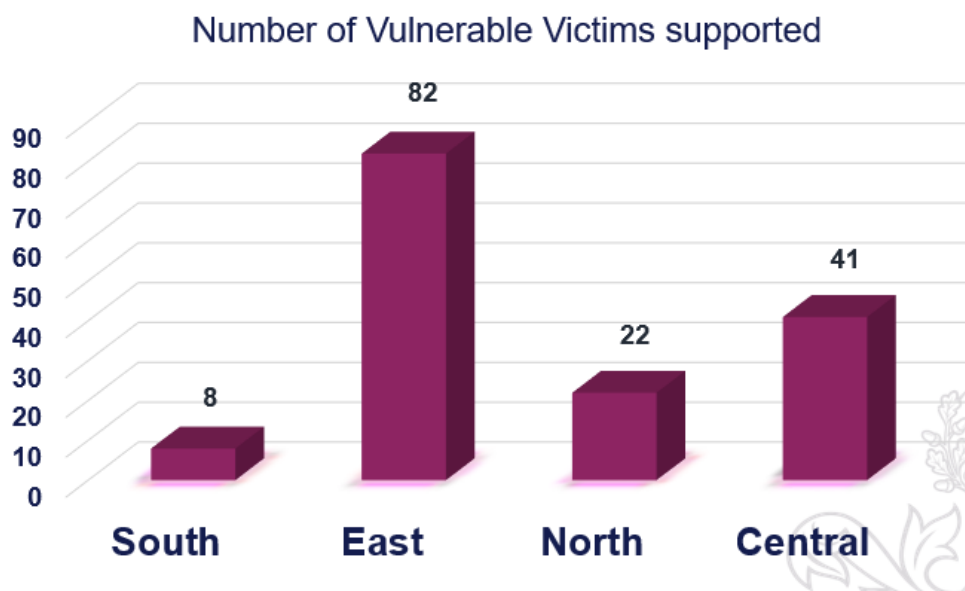


Figure 21. Vulnerable Victims by Locality (Partnership ASB ward level performance 2023/24)

Community Insight

Appreciative Inquiry

The Well Doncaster Team undertake Appreciative Inquiry (AI) within communities to gather insight to support code signing action plans with the community. Armstrong (2020) suggests in 'A changing world, again. How Appreciative Inquiry can guide our growth' that reframing the questions considering a crisis like Covid-19 and drawing on strengths and assets from past positive experience will help participants as they restructure their community. The AI questions are structured to pull out the successes of the past and present, to seek new potentials and possibilities and build on those through the Dream and Design stages.

Appreciative Inquiry will be conducted in Thorne from July 2021. The Appreciative Inquiry will include the following steps:

1. **Discovery Phase** – This will involve engagement with the residents of Thorne to find out what is working well in the community. Responses will be themed to allow priorities of the community to be established.
2. **Dream** – Residents and key stakeholders will be invited to attend an initial workshop to discuss what ideas they have for their community and how these will meet the priorities highlighted in the discovery phase.
3. **Design** – All attendees are invited back for a second workshop to develop an action plan to direct work for the community.
4. **Deliver** – A collaborative way of working and investing resources in working towards the actions from the previous phase.

| Theme | Sub theme | Quotes |
|-----------|---|--|
| Community | Friendly, Supportive, plenty of groups, | <i>'I am a local business and the community support me well'</i> <i>'Good neighbours and family connections, mainly a peaceful place to live'</i> <i>'I have moved here from the South and find it a much easier way of life here'</i> <i>'The people seem very friendly and helpful'</i> |

| | | |
|---|--|---|
| Hyperlocal shops and facilities | Unique independent shops and centre | <i>'The shops in Thorne they are all independent businesses'</i> <i>'Good high street and healthcare'</i> <i>'Everything is more or less on your doorstep'</i> |
| Assets buildings groups and services | The library The cafes The community groups The Leisure centres. | <i>'The library, rural walks and the canal'</i> <i>'Youth club to keep the young people busy'</i> <i>'The leisure centre (when its open!).'</i> <i>'We are long overdue the Leisure centre opening, 3 years of children not being able to learn to swim'</i> |
| Transport and location | Good motorway links Train station | <i>'Motorway links, train station, has a more rural feel I prefer this to living in a town.'</i> |
| Environment and outdoor spaces | Canal Walks Park Rural | <i>Open spaces, going for walks and good shops'</i> |

Doncaster Talks

In 2019, Doncaster Talks undertook insight across the borough of Doncaster. Responses were separated into wards and thematically analysed.

Across Thorne and Thorne 157 responses were recorded. The main themes on what people like about the area, what could be improved, and what Doncaster should focus on in the future are displayed in the below table.



157 responses were received which equate to 0.90% of the Ward

Like

- Strong sense of community, friendly neighbours
- Good transport links
- Close to all amenities

Improve

- Better shopping provision
- More visible policing
- Improve road conditions and fix potholes

Focus

- More facilities for young people
- Health and social care
- Crime and policing visibility

Locality Plan

Locality plans look at how we can together to strengthen communities and improve the lives and opportunities for residents living there. The East Locality Plan has been developed in conjunction with residents and sets out what will be done to improve the community over the next 12 months. Communities were engaged with through a number of different ways:

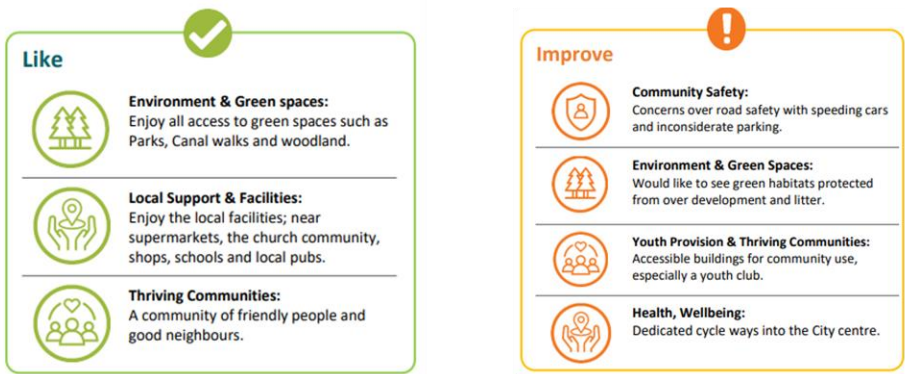


Figure 27. East Locality Plan Priorities

The 2023-24 Locality Plan for the East Communities outlines a set of priorities and can be viewed using the following link [East Locality Plan 2023/24](#)

Community Investment

Over the last 3 years there has been £775.00 million of investment into the East Locality from across Team Doncaster. This investment has been accessed by a range of community organisation providing vital support to address the community/locality priorities as identified through community conversations. Thorne and Moorends ward has received £294,700 of investment via 9 grant schemes.

The top community priorities for investment in Thorne and Moorends ward are Community Spirit, children and young people, physical activity and reducing social isolation.

References

Armstrong AJ, Holmes CM, Henning D. A changing world, again. How Appreciative Inquiry can guide our growth. *Social Sciences & Humanities Open*. 2020;2(1):100038. doi:10.1016/j.ssaho.2020.100038

Michie S, Abraham C, Eccles MP, Francis JJ, Hardeman W, Johnston M: Methods for strengthening evaluation and implementation: specifying components of behaviour change interventions: a study protocol. *Implement Sci*.

Appendix

Well Doncaster Annual reports

Well Doncaster Approach: <https://youtu.be/e1RKOZoGI10>

More information about how Well Doncaster has been meeting outcomes and objectives can be found in past and present annual report:

<https://welldoncaster.wordpress.com>

Census data 2021

The census is undertaken by the Office for National Statistics every 10 years and gives us a picture of all the people and households in England and Wales.

[Build a custom area profile - Census 2021, ONS](#)

[Census Maps - Census 2021 data interactive, ONS](#)

Public Health Data

Fingertips

This is a new fingertips profile that uses data from Local Health an existing PHE data tool. Local Health is a collection of quality assured health information presented for small geographical areas. By presenting data for small areas, Local Health provides evidence of inequalities within local areas. It supports targeted interventions to reduce such inequalities.

Local Health contains indicators related to:

- Population and demographic factors
- Wider determinants of health
- Health outcomes

It presents data for middle super output areas (MSOA), electoral wards, clinical commissioning groups (CCG), local authorities, and England as a whole.

Please note, as the Local Health tool was designed to allow users to map small area data, a mapping option has not been provided in this profile.

<https://fingertips.phe.org.uk/profile/local-health/data#page/0>

[Local Health - Public Health England - Reports: get a dashboard on a custom area](#)

Mosaic data

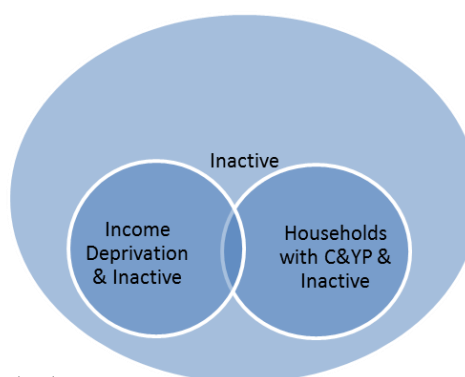
Mosaic Public Sector classifies the UK population into one of 66 types and 15 groups through a detailed and accurate understanding of each citizen's demographics, lifestyles, behaviours and location.

The Physically Inactive Population of Doncaster

The MOSAIC types who "Do not exercise" and "Do not take part in Sport" were searched and three priority groups have been identified through work with strategic partners as part of the development of Doncaster's Physical Activity Strategy. The three priority groups are:

- The Inactive
- Families with children and young people
- People living in income deprivation

These groups are cross-referenced against the inactivity list allowing for the identification of MOSAIC types which are both likely to be inactive and living in deprivation as well as inactive and from households with children and young people.



Link to the Get Doncaster Moving strategy;
<https://getdoncastermoving.org/>

Pupil Lifestyle Survey 2020



Final_ Ward report_Doncaster Pupil Lifestyle Survey 2020.pdf

Power BI – Joint Strategic Needs Assessment

The Joint Strategic Needs Assessment (JSNA) is a process that identifies the current and future health and wellbeing needs of a local population. The dashboards show information about the employment, health, and wellbeing of people in Doncaster. We use this information to inform our policies and strategies to improve the lives of everyone in the Doncaster area.

[Joint Strategic Needs Assessments - Team Doncaster](#)