

# Balby North & South Community Profile Well Doncaster



**Well Doncaster**

**Community Led Health and Wealth**

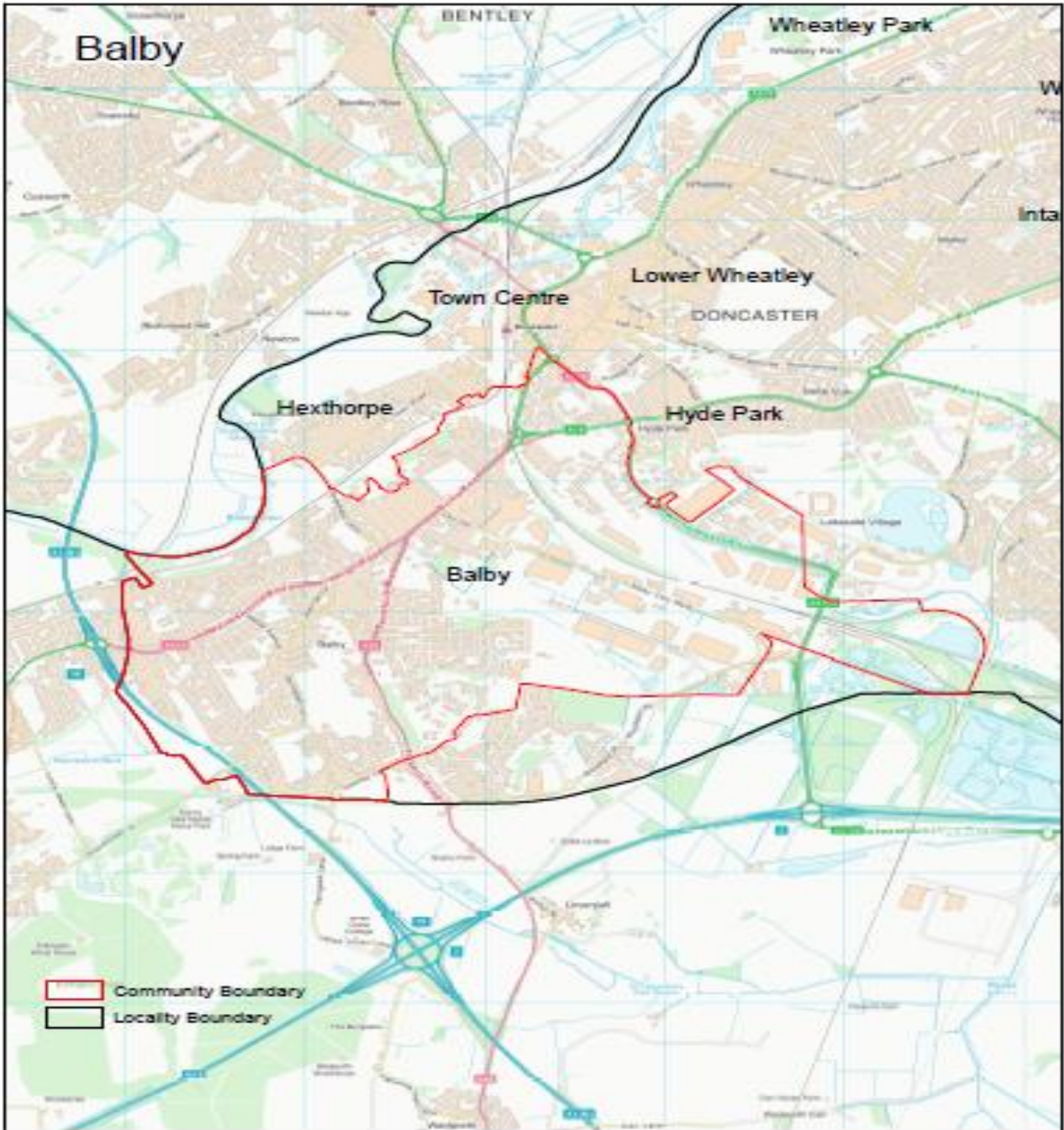
Empowering people in Doncaster to live better, healthier, and happier lives.

[www.welldoncaster.uk](http://www.welldoncaster.uk)

Well Doncaster  
**Community  
Wealth Builder**

Well Doncaster  
**Be Well**

 **City of  
Doncaster  
Council**



# Well Doncaster



## This Report

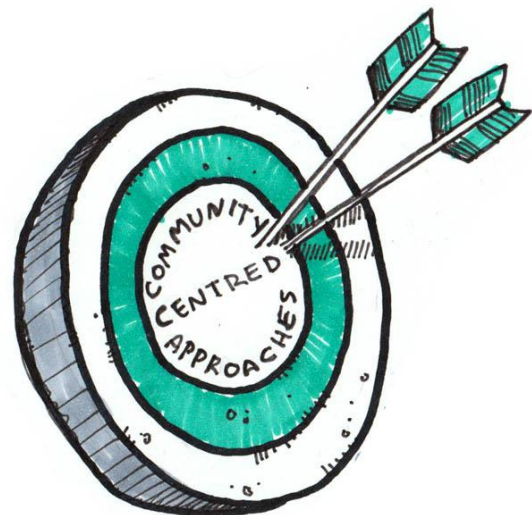
This report focuses on Balby, part of the Balby North and Balby South ward. It will focus on outlining key information and priorities. The document builds on the initial community profile of 2021 and will contain updated figures from various data collation at our fingertips. The document will show the initial conversations with communities, including ward members, community organisations, faith groups, residents and other organisations who work in the area. Communities' knowledge of their own areas enables them to identify their strengths and the assets on which they can build on. This document is shared with the intention of supporting those conversations and sharing information that might not be readily available to local people. Information in this report will consist of Balby North, Balby South, and Balby & Hexthorpe ward data which is dependent on the source.



## Contents

This Report.....	3
One Page Summary .....	8
Balby .....	8
Key Health priorities.....	8
Assets .....	9
Asset Maps.....	9
Assets in the Community .....	11
Ward Members.....	15
Health and Wealth.....	16
Health Inequalities .....	17
Poverty .....	17
Deprivation .....	17
Employment .....	17
Food Poverty.....	18
Health Inequalities.....	18
Long-Term Health Conditions .....	18
Alcohol .....	19
Smoking.....	19
Life Expectancy .....	21
Causes of Death.....	21
Childhood Development.....	23
Physical Activity.....	25
Green Spaces/Parks.....	26
Population Health Management.....	26
Community Information .....	27
Population and Diversity .....	27
Population size .....	27
Age Profile.....	27
Housing.....	28
Community Insight.....	28
Appreciative Inquiry .....	28
Doncaster Talks.....	31
Citizens Advice Doncaster Borough.....	33

Stronger Families .....	33
Crime/ASB.....	33
Vulnerable Victims .....	35
Wellbeing Service.....	36
Community Investment.....	36
Locality Plan .....	37
References .....	38
Appendix.....	39
Well Doncaster Annual reports .....	39



# BALBY NORTH



26.1% of reception age children are overweight in Balby North



Balby North has the highest child poverty in all of Doncaster



Balby North has the highest proportion of deaths in under 75s



Balby North is 5th highest deprived area of Doncaster



Balby North has a higher than average BAME community



35% of Balby South children residents are only active once a week



# BALBY SOUTH



39.7% of Year 6 children are overweight in Balby South



Balby South is the 5th highest community for child poverty in Doncaster



Balby South has the highest proportion of preventable deaths in under 75s



Balby South is 11th highest deprived area of Doncaster



Younger than average population in Balby South



31% of Balby South children residents are only active once a week



## One Page Summary

### Balby

Balby spans two wards: Hexthorpe & Balby North and Balby South. It is made up of multiple areas: Balby North, Balby East, Balby South and Balby West. Hexthorpe and Balby Bridge are part of the ring that surrounds the Town centre. Many residents are living with multiple levels of deprivation, whilst Balby St Peter's Road is also amongst the top 10 most deprived areas in Doncaster. Almost half of the population across Balby ward is living in deprivation. Balby has a younger than average population with just over half being of working age. According to the Census 2020 87.4% of residents identify as 'White' in Balby North, this is higher than the national average (81%).

A high number of children do not meet development milestones and high levels of childhood obesity are prevalent. Teenage pregnancies are highest across Balby wards.

People in Balby have a lower life expectancy and many residents are living with conditions related to poor lifestyle choices, including smoking, Chronic obstructive pulmonary disorder (COPD), lung cancer and emphysema. A substantial number of preventable deaths occur in people aged 75 and under.

Development of green spaces is high on the local agenda, and there are different spaces available to explore and engage in physical activity. Westfield Park is part of the future parks' scheme to be undertaken in 2021-22.

### Key Health priorities

- Poverty (including child poverty, fuel poverty, poverty in older people, unemployment, and long-term unemployment)
- Child development (including weight management)
- Preventing premature deaths specifically linked to poor lifestyle choices (COPD, Lung cancer, coronary heart disease)
- Mental health awareness including self-harm, loneliness, and isolation.



## Assets

Well Doncaster use a community-centred approach which allows investment in supporting, working with, and empowering communities to facilitate a healthy community. The voice and role of our communities and taking a strength/assets-based approach to work with individuals, families and communities is crucial to the achievement of our overall vision.

### Asset Maps

The maps below show the different types of assets across Balby. These have been mapped using ward boundaries, therefore, some assets in Hexthorpe are included. Please refer to the [appendix](#) for larger maps.

This area covers any form of business open for trading, including betting shops, cafés, and supermarkets.

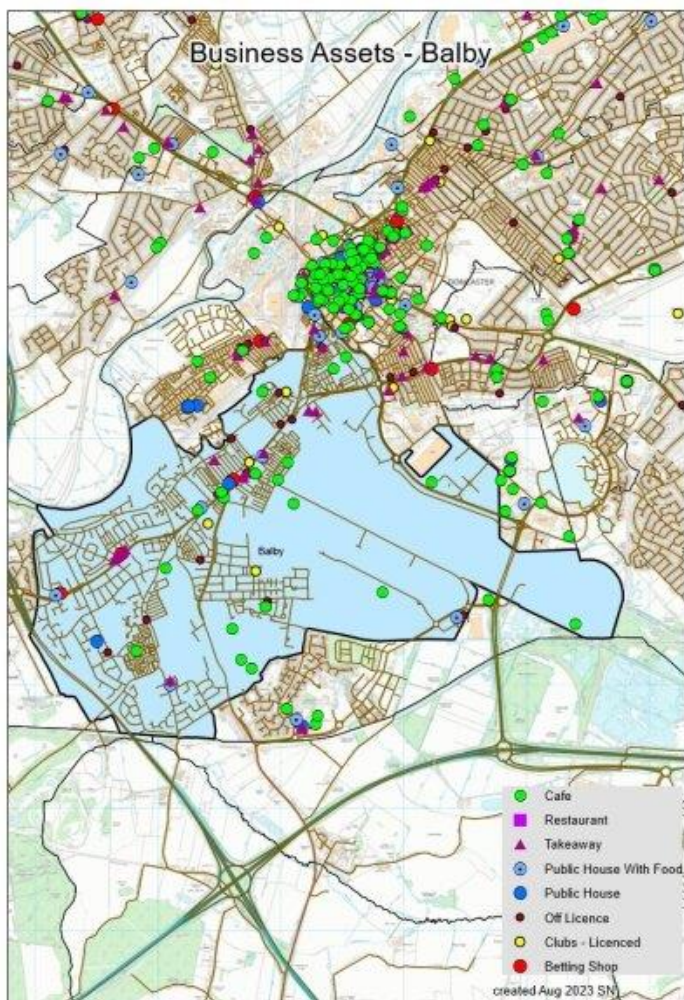


Figure 1 Balby Ward Business Assets

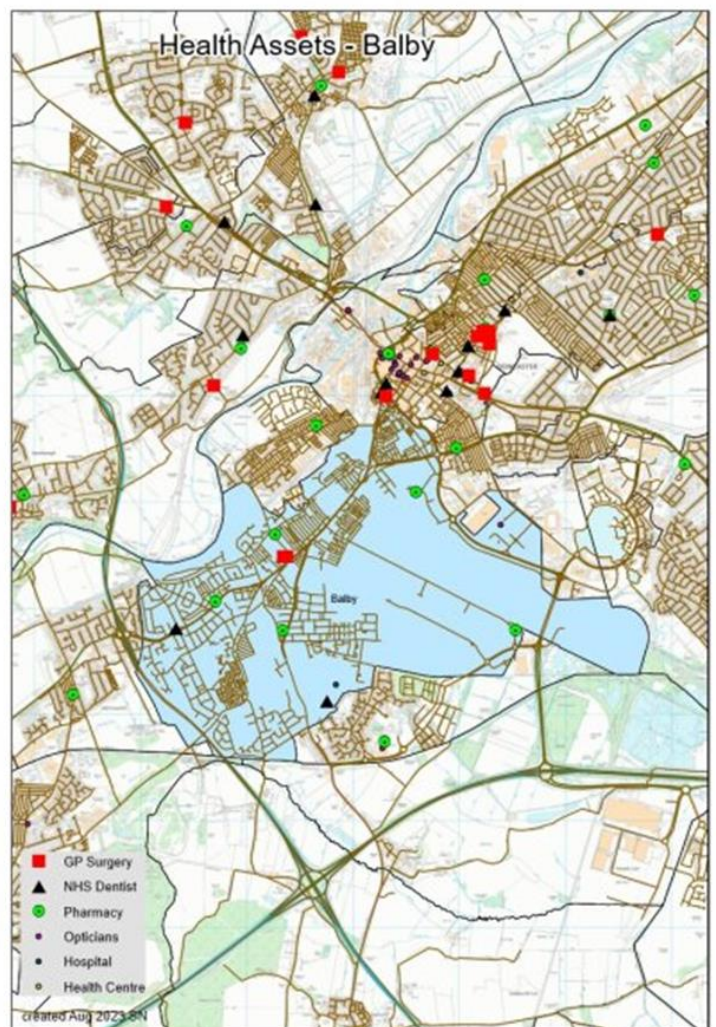


Figure 2. Balby Ward Health Assets



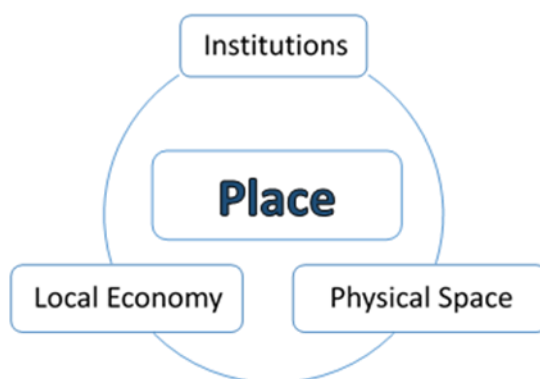
Figure 3. Balby ward Community Assets





## Assets in the Community

As part of a population health management approach, the following assets have been identified and themed around place and people:



Institutions (Schools/colleges etc.)	Physical space (Parks, carparks etc.)	Local Economy (Local profit Businesses)
<u>Schools:</u> <ul style="list-style-type: none"> <li>Woodfield Primary school</li> <li>Balby Central Primary School</li> <li>Mallard Primary school</li> <li>Astrea Academy Woodfield's</li> <li>Sycamore Hall Preparatory school</li> <li>Bright beginnings day nursery &amp; pre school</li> <li>Carr Lodge Academy</li> <li>Balby Carr Community Academy</li> <li>Waverley Primary Academy</li> <li>St Francis Xavier Catholic Primary school</li> </ul>	<u>Green space:</u> <ul style="list-style-type: none"> <li>Potteric Carr Nature Reserve</li> <li>Coronation Road Playground</li> <li>Westfield Park</li> <li>Oswin Avenue Play area</li> <li>Waverley Avenue Playground</li> <li>Woodfield Park</li> <li>Stirling street playground</li> <li>Bayford Road Park</li> <li>Stevenson Road Park</li> <li>Walpole Close Park</li> </ul>	<u>Food &amp; Beverage:</u> <ul style="list-style-type: none"> <li>McDonalds (Sandford Rd)</li> <li>Platform Café (Exemplar Health care)</li> <li>Woodfield Farm &amp; Carvery</li> <li>Balby Bridge Social club</li> <li>The Coffee Club</li> <li>The Roadside Café</li> <li>Café on the Corner</li> <li>The Crusty Cob</li> <li></li> </ul>
<u>Health:</u> <ul style="list-style-type: none"> <li>The Scott Practice</li> <li>St John's Group Practice</li> <li>St Catherine's hospital</li> <li>James Cooper</li> </ul>	<u>St Leger communal halls:</u> <ul style="list-style-type: none"> <li>Westbourne Gardens</li> <li>Evanston Gardens</li> <li>Galsworthy Close</li> <li>Linney Centre</li> <li>Waverley Community Centre</li> </ul>	<u>Shops/ Supermarkets:</u> <ul style="list-style-type: none"> <li>Lidl (Sandford Rd)</li> <li>Various supermarkets, convenience stores &amp; takeaway shops (Balby Road)</li> <li>B &amp; Q</li> <li>Balby Boutique</li> <li>Balby Carpet Centre</li> <li>The Roman Party Shop</li> <li>V&amp;A antiques shop</li> <li>Balby Bridge food and wine</li> </ul>
<u>Other Community institutes:</u> <ul style="list-style-type: none"> <li>Community Library</li> <li>Ashworth Barracks Museum</li> </ul>	<u>Other:</u> <ul style="list-style-type: none"> <li>Balby Library</li> <li>Allotments</li> <li>Woodfield Park Community Hall</li> <li>Doncaster BMX track</li> <li>The Labour Hall</li> </ul>	<u>Fitness &amp; Gym facilities:</u> <ul style="list-style-type: none"> <li>Nuffield Health</li> <li>Fitness Village Balby</li> </ul>

<ul style="list-style-type: none"> <li>• Scarborough Barracks</li> <li>• Doncaster Wheatsheaf Singers</li> <li>• The Platform Café</li> </ul> <p><u>Religious:</u></p> <ul style="list-style-type: none"> <li>• Sikh temple</li> <li>• St John's church</li> <li>• Church of the Sacred Heart</li> </ul>	<p><u>Assisted Living</u></p> <ul style="list-style-type: none"> <li>• Cedars Care home</li> </ul>	<ul style="list-style-type: none"> <li>• Woodfield Squash and Leisure Club</li> <li>• Balby Carr Sports Centre</li> <li>• Danum Cross fit</li> <li>• ACMAC Martial Arts Balby</li> </ul> <p><u>Care homes:</u></p> <ul style="list-style-type: none"> <li>• Ivy Court</li> <li>• Quarry fields Learning Disability Service</li> <li>• Heathcote's Care home</li> </ul> <p><u>Other:</u></p> <ul style="list-style-type: none"> <li>• Amazon Warehouse</li> <li>• Holiday Inn</li> <li>• One Call Insurance</li> <li>• Industrial Business Park (Balby Carr Bank)</li> <li>• Various car dealerships/ garages</li> <li>• J M McGill x 3</li> <li>• M I Weldricks</li> <li>• Rowlands Pharmacy</li> <li>• Balby Late Night Pharmacy</li> <li>• Post Office (Warmsworth Rd)</li> <li>• Doncaster Mail Centre</li> </ul>
--	--	--



<p><b>INDIVIDUALS</b> (Key Individuals within the community and why)</p>	<p><b>ASSOCIATIONS</b> Local Groups/Clubs</p>	<p><b>STORIES</b> (Good news stories)</p>
--	---	---

<ul style="list-style-type: none"> <li>• Community Explorers</li> <li>• Ward Members</li> <li>• Community leaders</li> <li>• Well Doncaster officers</li> <li>• Stronger communities' team</li> <li>• PCSO's</li> </ul>	<p><u>Support:</u></p> <ul style="list-style-type: none"> <li>• DN4 Dominion Neighbourhood watch</li> <li>• Balby South Community Engagement Society</li> <li>• Pioneer Solutions Ltd</li> <li>• Doncaster Live at Home Scheme</li> <li>• Befriend</li> <li>• Flourish Enterprise</li> <li>• Wildings &amp; Wellbeing CIC (Community Interest Company)</li> <li>• Live at home</li> <li>• Dice</li> </ul>	<p>S John's Church, Balby have supported hundreds of families over lockdown, been successful with several funding applications which has enabled them to make the building covid secure and continue community support.</p>
	<p><u>Children:</u></p> <ul style="list-style-type: none"> <li>• Spark Youth Club</li> <li>• PifPaf Children's Entertainment</li> <li>• Balby Family Hub &amp; Children's centre</li> </ul>	<p>Alun says <i>"I want to thank you for the great support you have given during this time. The grants awarded have helped make us sustainable so that we are more confident going forward."</i></p>
	<p><u>TARA (Tenants and residents association) groups:</u></p> <ul style="list-style-type: none"> <li>• Balby Bridge TARA</li> <li>• Balby Littlemoor TARA</li> <li>• Balby West TARA</li> </ul>	<p>More recently, St John's church have employed a foodbank manager and Alun says <i>"We are very grateful for grants to enable us to employ Sharon from National Lottery Community Fund, Doncaster Council Fight Back Fund, and South Yorkshire Community Fund"</i></p>
	<p><u>Other groups/ activities:</u></p> <ul style="list-style-type: none"> <li>• Knit and Natter</li> <li>• Bingo</li> <li>• Friends of Woodfield Park</li> <li>• B:Friend History club</li> <li>• Walk and talk around Woodfield Park</li> <li>• Balby Community Arts</li> <li>• Yorkshire Bike Shack</li> <li>• Dadsley Crafting CIC</li> <li>• Woodfield Binvincibles (litter picking group)</li> <li>• Balby North PAG (Positive Action Group)</li> <li>• Balby South PAG</li> </ul>	
	<p><u>Sport clubs:</u></p> <ul style="list-style-type: none"> <li>• Woodfield Squash &amp; Leisure Club</li> <li>• Balby Athletic</li> </ul>	



	<ul style="list-style-type: none"><li>• ACMAC Martial Arts Balby</li><li>• Doncaster Grace Ju Jitsu</li><li>• Doncaster BMX Racing</li><li>• Eves trust Dynamos Juniors</li></ul>	
--	---	--

## Ward Members

Below are the ward members for Balby North (including Hexthorpe) and Balby South following elections in 2021.



Councillor Glyn  
Jones

Hexthorpe and  
Balby North  
Labour  
Deputy Mayor,  
Portfolio Holder for  
Housing and  
Business.



Councillor Sophie  
Liu

Hexthorpe and  
Balby North  
Labour



Councillor John  
Healy

Balby South  
Labour



Councillor Tracey  
Moran

Balby South  
Labour

## Health and Wealth

Health inequalities are avoidable differences across the population, and between different groups within society. Health inequalities arise from the conditions in which we live, work and play. These conditions influence our opportunities for good health, how we think, feel and act, therefore shaping our health and wellbeing.

Evidence shows that people living in our most deprived areas face the worst health inequalities in relation to health access, experiences, and outcomes. Deprivation covers a range of issues and refers to unmet needs caused by a lack of resources, including but not limited to finances, housing, and education. It is measured in different ways including the Indices of Multiple Deprivation (IMD).

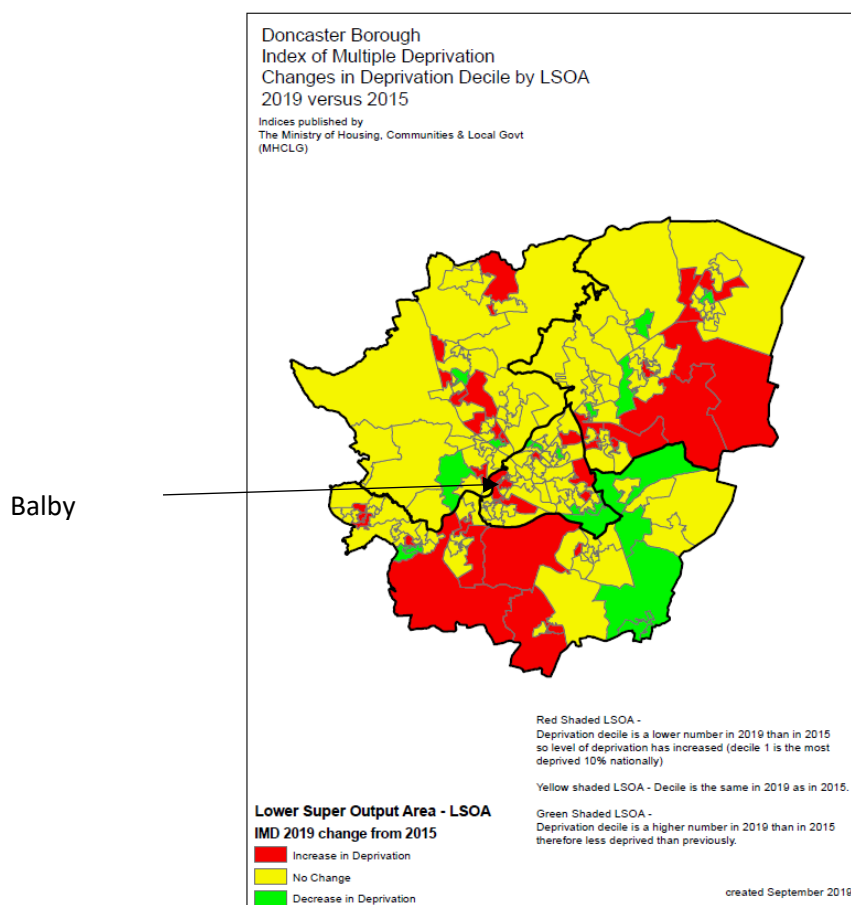


Figure 4. Doncaster Index of Multiple Deprivation, changes in deprivation between 2015-2019

The map above and table below illustrate the higher levels of deprivation in the Balby area. Although IMD data shows that levels have declined from 2015 to 2019, Balby North/Hexthorpe remains the 3rd most deprived area in Doncaster whilst Balby South is the 12<sup>th</sup> highest deprived community in Doncaster.

## Health Inequalities

### Poverty

There is a high percentage of residents in Balby North living in Poverty at a rate of 33.2% with Balby South at 21.9%, this shows that although residents in Balby South are living in poverty, there is more poverty within Balby North.

### Deprivation

The data provided via Public Health Fingertips shows the distinct levels of deprivation throughout our communities in Doncaster. Below is a table of data showing: income deprivation, children affected by income deprivation, older people in poverty and those affected by fuel poverty. From the data provided we can show the difference between Balby North/Hexthorpe, Balby South, Doncaster as a whole and nationally.

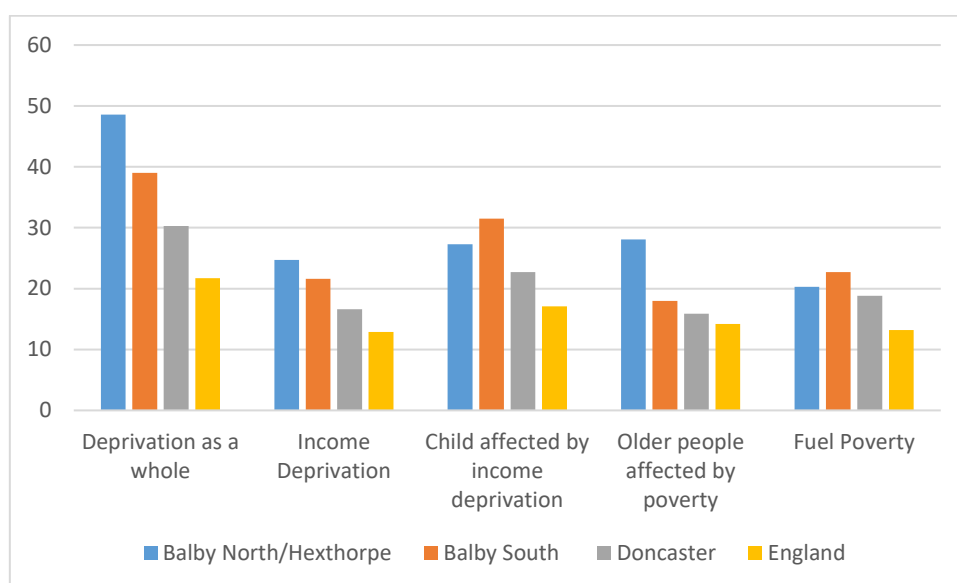


Figure 5. Levels of income deprivation across wards, Doncaster and England

Levels of deprivation overall for Balby North/Hexthorpe stands at 48.6 – the 3<sup>rd</sup> highest community in Doncaster whilst Balby South is 39 and 12<sup>th</sup> highest community out of 88 communities in total.

### Employment

The 2021 Census has given us new data based on the community of Balby as a whole.

54.3% of residents are currently in employment, which is comparative with that of Doncaster (54.9%) and England at 57.4%. There is a considerable number (50.6%) of these residents who are employed travel less than 10km to their place of work, this is significantly higher than the national rate (35.4%). Which shows there are a sizeable proportion of jobs on their doorstep. Even so, 54.5% of people within Balby have not been employed in the last 12 months which is lower than the national rate at 61.1%. What is shocking to see is that the Census 2021 data revealed that 32.5% of the population of Balby have been recorded as Never Worked which is significantly higher than the rate of 25.6%.

Of those who work, the majority work full time (61.9%) which is similar to that of Doncaster (60.7%) and England (59.1%). Part time working is of a similar picture, just slightly higher for Balby (20.8%) than the Doncaster rate (20.7%) and England (19.5%).

The census shows the professions of residents in Balby with Elementary occupations – simple and routine tasks/first skill level roles being the highest (25.9%) which is higher than that of Doncaster (16.5%) and England (10.5%).

The Joint Strategic Needs Assessment (JSNA 2022) data shows the percentages of residents claiming universal credit. In the Balby North/Hexthorpe ward 9.38% of residents are claiming this benefit, this is highest percentage in the whole of Doncaster. In Balby South 5.02% of residents are claiming universal credit, this is 5<sup>th</sup> highest in Doncaster.

## Food Poverty

There are 8 active foodbanks in the Central locality of Doncaster. On average in quarter 2 (Jul – Sept 23) 311 adults and 127 children per month who were supported by Central Foodbanks.

Two are based in Balby– Pioneer Social Enterprise and Given Freely, Freely Given (St Johns). There are different levels of data that is collated by Well Doncaster from all foodbanks including the reason residents use foodbanks.

The top 3 reasons recorded at Pioneer Social Enterprise and St Johns are: Cost of Living and Low Income and benefit changes.

## Health Inequalities

### Long-Term Health Conditions

The proportion of residents with poor health in Balby is considerably higher than the national average. Over 22.4% and 19.3% of residents in Balby South and Balby North, respectively, reported to be living with a limiting health condition as per the 2021 Census.

Figure 5 shows the number of emergency admissions to hospital per 100 people. Hospital admissions for those living with limiting illnesses or health conditions largely associated with smoking are significantly higher across Balby. Admissions associated with COPD are nearly twice the national average in Balby North, suggesting challenges around self-management. Admissions related to self-harm are also significantly higher in Balby North than in Doncaster and England.



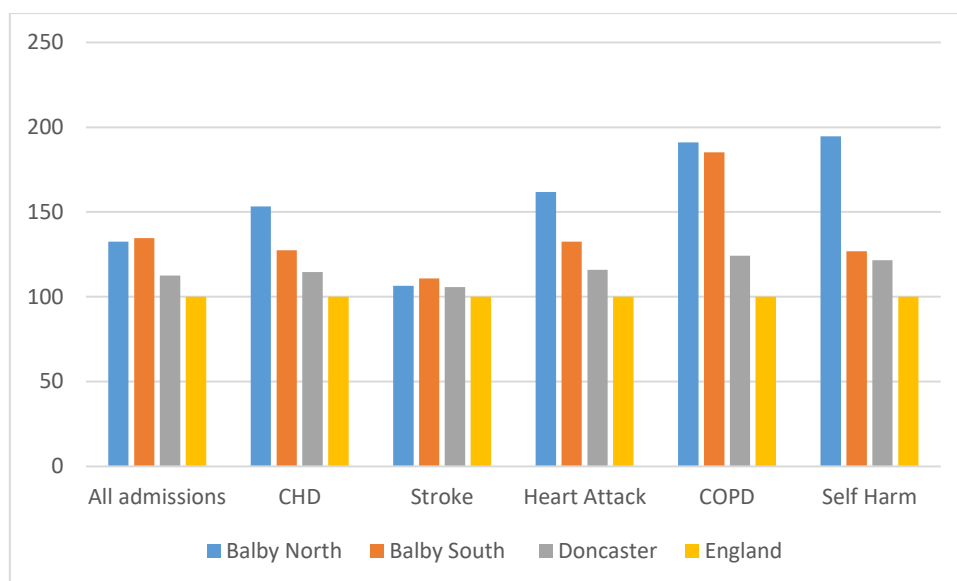


Figure 6. Comparison of hospital admissions by ward 2016/17-20/21

## Alcohol

The data supplied by Public Health Fingertips data shows that Balby North/Hexthorpe ward has the highest rate of hospital admissions of alcohol attributable conditions (broad definition) in Doncaster, with Balby South 11<sup>th</sup>.

Balby North/Hexthorpe has a rate of 143.1 and Balby South at 116.4 both are higher compared to Doncaster at 112.7 and is significantly higher than England at 100.0.

## Smoking

In Doncaster we have 37 GPs, of which they provide data for their patients who when registered, register as a smoker. Doncaster has 274,681 patients registered aged 15+ of this 49,332 are down as being a smoker (17.96%). Doncaster has the highest percentage of registered smokers compared to our surrounding boroughs, Rotherham (16.48%), Barnsley (17.11%), Sheffield (13.92%) and Other (14.46%).

From the data provided by NHS England, 16 GPs serve the Central Locality based in communities throughout. The table below shows the number of patients registered to Central GP surgeries, registered as a smoker.

	Central GPs	No. of patients registered (15+)	No. of patients registered as a smoker	Percentage of smokers
	Regent Square	8533	1675	19.63%

<b>City Centre</b>	The Flying Scotsman	9671	3053	31.57%
	Frances Street Medical	5931	1532	25.83%
<b>Hyde Park</b>	n/a	n/a	n/a	n/a
<b>Clay Lane</b>	n/a	n/a	n/a	n/a
<b>Bennetthorpe</b>	Dr Kirkham's (Burns group)			
<b>Town Moor</b>	Kingthorne Practice	11261	2272	20.18%
	Mount Group	11271	1567	13.9%
	St Vincent's Practice	12263	1817	14.89%
<b>Balby</b>	St Johns Practice	7301	1373	18.81%
	The Scott Practice	12879	2327	18.07%
<b>Intake</b>	The Sandringham Practice/ASA Medical	16707	2794	16.72%
<b>Wheatley Hills</b>	n/a	n/a	n/a	n/a
<b>Lower Wheatley</b>	n/a	n/a	n/a	n/a
<b>Wheatley Park</b>	n/a	n/a	n/a	n/a
<b>Cantley</b>	Cantley Surgery	13152	1717	13.06%
	The Burns Practice			
	The Oakwood	4797	677	14.11%
<b>Belle Vue</b>	n/a	n/a	n/a	n/a
	Bessacarr Medical Mount Group (numbers linked	Same as above	Same as above	Same as above

	with TM surgery)			
--	------------------	--	--	--

The table shows that the Balby GP surgeries has the 5<sup>th</sup> and 6<sup>th</sup> highest number of smokers in Doncaster.

\*Data provided shows a patient registered, they may not live in the locality of the GP surgery.

### Life Expectancy

Life expectancies in males (75.7 y) and females (79.7) living in Balby north are lower than the rates of Doncaster (*m*: 77.9, *f*: 81.3) and England (*m*: 79.5, *f*: 83.2), as are those for Balby South (m 76) (f 81.4).

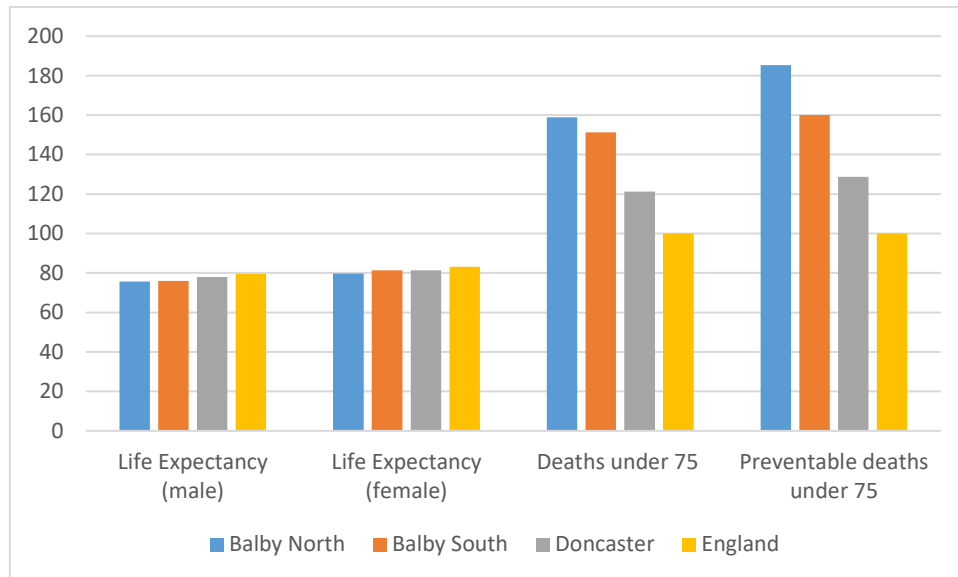


Figure 7. life expectancy and deaths, preventable deaths under 75 2016-20

### Causes of Death

Coronary heart disease is the leading cause of death of all ages in both Balby North & Balby South. Respiratory disease follows closely. The risk of the former diseases increases with the following factors: poor lifestyle choices, living conditions and lack of physical activity.

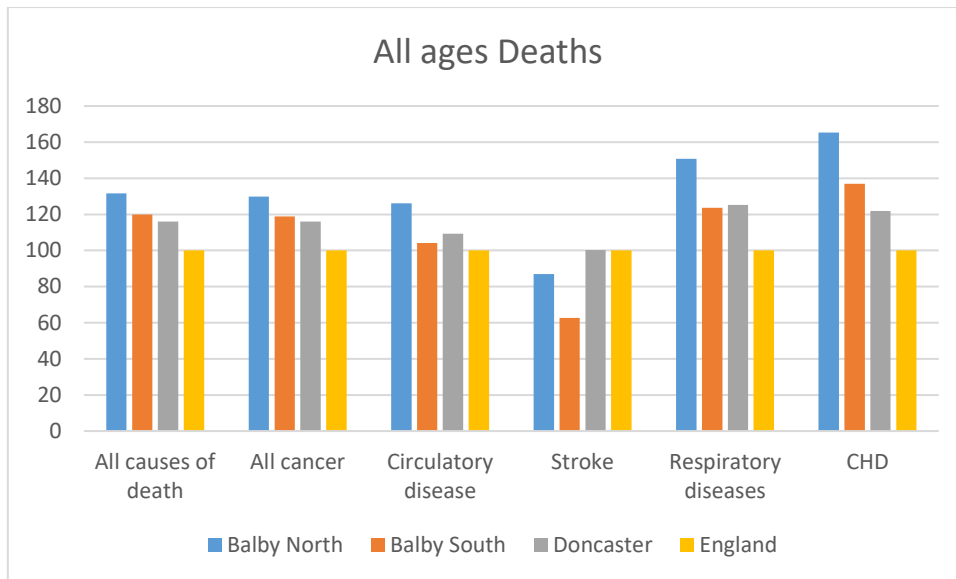


Figure 8. Comparison of causes of deaths, all ages between 2016-20

Deaths rates from all causes and all ages across City Centre ward (123.5) are greater than those of for England (100).

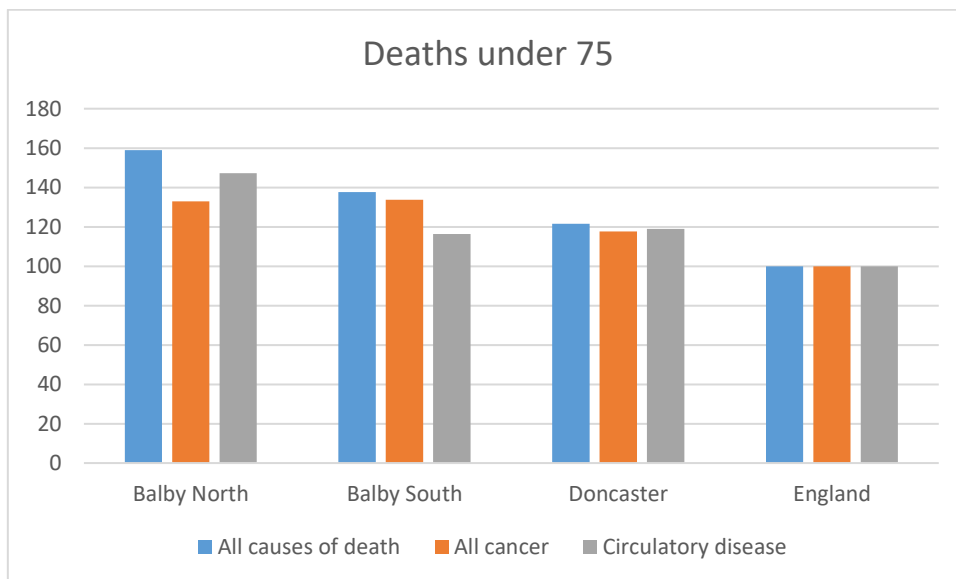


Figure 9. Deaths of all causes for individuals ages under 75 years of age between 2016-20

Balby North and Balby South have significantly more deaths occurring in under 75s than the borough and national rate. Circulatory disease is the leading cause of death in under 75s in both wards. Preventable deaths occurring (185.3 per 100 people) in Balby North are considerably higher than the borough average (144.7 per 100 people) and England (100); Balby South also reports high numbers (146.9 per 100).

## Childhood Development

The number of children born with low birth weight is greater in Balby South (11.1%) than in Balby North/Hexthorpe (8.2%). The number of births to teenage mums is more than double in Balby North/Hexthorpe (2.8%) and Balby South (2%) than it is in Doncaster (1.1%) and is nearly 3 times more than England (0.7%).

Children classified as overweight (including obese) in reception is more prevalent in Balby North/Hexthorpe (26.1%) and Balby South (25.8%) compared to the Doncaster (25.5%) and England (22.6%) average. This trend continues into year 6, where increasing numbers of children are reported to be overweight or obese.

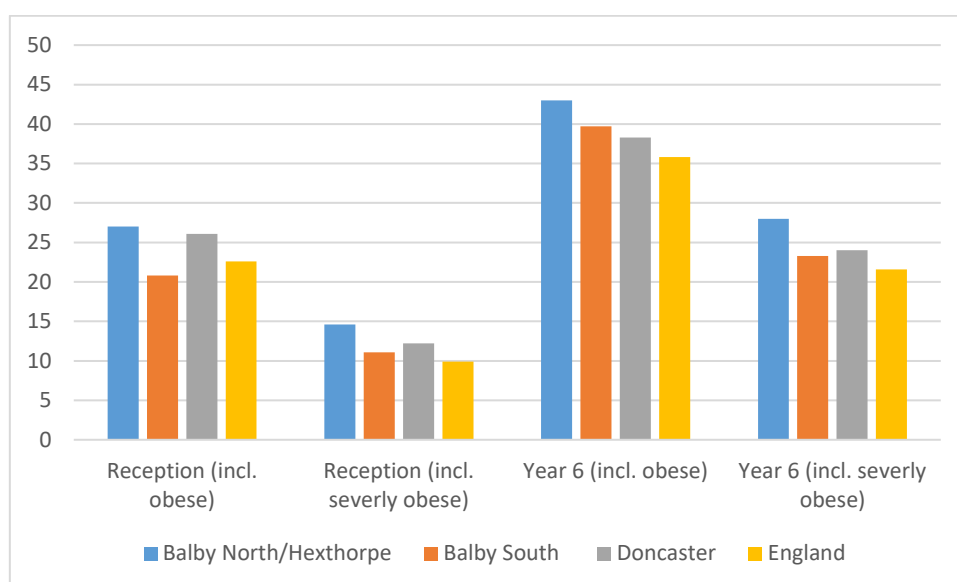


Figure 10. Average levels of obese and overweight children in reception and year 6 across 2019/20 – 21/22

During adolescence and young adulthood, hospital admissions amongst individuals aged 15-24 years of age in Balby North/Hexthorpe 2<sup>nd</sup> highest (214.3 people per 10,000) compared to the rate of Doncaster (161.66 people per 10,000). Balby South stands at the 9<sup>th</sup> highest community in Doncaster (159.7 per 10,000).

In the 2022 Pupil Lifestyle Survey saw 14% reported having a long-standing illness in Balby North/Hexthorpe this is higher than Doncaster 12%, Balby South is slightly lower at 11%.

7% of children in Balby North/Hexthorpe reported having a disability, in Balby South 6% of children said the same which is in line with the rest of Doncaster.

When asked about healthy eating and wellbeing, 86% of children in Balby North/Hexthorpe and 85% in Balby South report having breakfast. 55% and 51% respectively reported having school dinners, this is in line with Doncaster. There is an extremely higher proportion of children accessing free school meals with 30% in Balby North/Hexthorpe and 31% in Balby South compared to the rate across Doncaster at 19%.



96% reported feeling warm and comfortable at home in Balby North/ Hexthorpe and 97% in Balby South. 88% feel they can clean themselves at home in Balby North/Hexthorpe, and slightly higher in Balby South at 90%. 80% of children reporting they have a restful night's sleep in Balby North/Hexthorpe and 78% of children in Balby South. These are all in line with Doncaster.

85% of children stated that they felt safe at home in Balby North/Hexthorpe and 88% in Balby South (Doncaster 89%) and 86% of children have a nice safe place at home or near home to play in Balby North/Hexthorpe, this is slightly lower in Balby South with 82%.

In 2019, the average GCSE attainment 8 score per pupil (out of 90) was 39.3 in Balby, this is lower than Doncaster overall (44) and nationally (46.7). In 2022 the results are lower at a rate of 37.7 for Balby, compared to Doncaster at 45.2 and nationally at 48.8.

In 2023 for KS2, 46% of pupils achieved the expected standard in reading, writing, and mathematics in Balby, this has dropped by 5% since 2022. This lower when comparing to Doncaster as a whole (55%) and the national percentage of 60%.

Fifty-two children have been recorded as receiving Elective Home Education, which is the highest number from all communities in Doncaster and forty-five recorded as missing education in Balby. (City of Doncaster Council, 2023).



## Physical Activity

Mosaic data shows a high percentage of the population in Balby North and a higher percentage of Balby South do not engage in any moderate intensity physical activity. Please see [appendix](#) for more information on mosaic data. This falls in line with Acorn data which shows 44.2% of residents in Balby South have reported never engaging in moderate intensity physical activity and 42.9% in Balby North. Therefore, nearly half of the population is leading a sedentary lifestyle. More information on the Acorn profile can be found in the [appendix](#).

Get Doncaster Moving's Local Delivery Pilot (LDP) conducted three insight phases to establish how inequalities affect physical activity levels of Balby residents. Phase 2 insight reports COM-B (Capabilities, Opportunities, Motivation and Behaviour) (Capabilities, Opportunities, Motivation and Behaviour) factors that can affect an individual's levels of physical activity. Lack of capabilities reported were typically centred around structured sport and exercise sessions. Resident knowledge of physical activity and its benefits were strong amongst both active and inactive residents. However, it was highlighted that they were far less familiar with what constitutes physical activity, suggesting guidance around 'what counts' as physical activity. For more information on the LDP study please find the link in the [appendix](#).

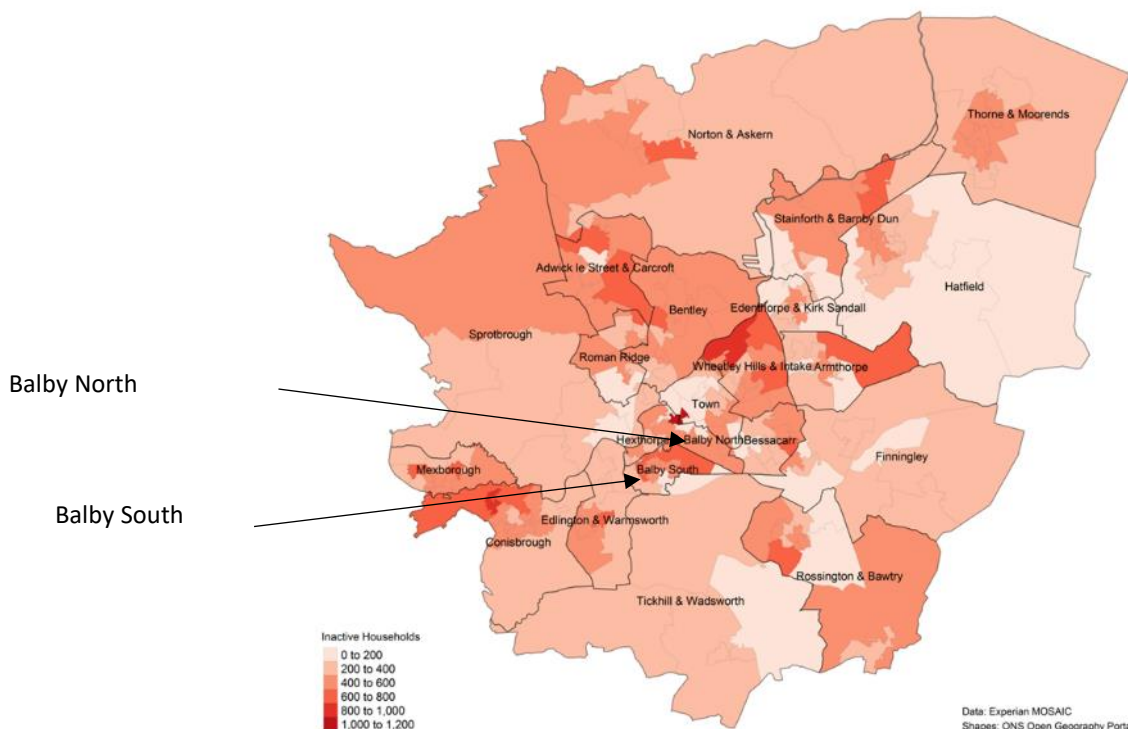


Figure 11. Levels of inactivity within households across Doncaster

Data from the Pupil Lifestyle Survey (2022) reports an average of 35% of children being physically active on only one or two days a week in Balby North/Hexthorpe and 31% in Balby

South, 23% were said to be active on three or four days a week in Balby North/Hexthorpe and 20% in Balby South. 39% of children in Balby North/Hexthorpe were active on five or more occasions during the week with Balby South at 46%. Getting hot, tired being outdoors in cold weather and preferring to do other things were the three residing answers given by pupils in Balby North/Hexthorpe when asked why they did not participate in physical activity and for Balby South the top reasons were the same. The full Pupil Lifestyle Survey at ward level and locality level can be found [here](#).

The Department for Education supplies each local authority with the school attainment grades for those in KS2 and KS4.

At KS4, each pupil is given an Attainment 8 score (a score out of 90) based on their 8 best GCSE grades including English, maths and at least 3 other traditional academic GCSEs (sciences, languages, and humanities). Other qualifications at an equivalent level (e.g. BTECs) can also count towards the score.

### **Green Spaces/Parks**

There are multiple children's play parks situated in Balby – Brayford Road, Woodfield Way, Woodfield Road, Coronation Road, Oswain Avenue, Magenta Crescent, Waverly Avenue, Stevenson Road and Walpole Close Park, all are easily accessible to all residents of the community.

### **Population Health Management**

Covid-19 has had a massive impact on communities. It is vital to understand the effect and direction the pandemic has had on community organisation in the ward so that: 1) support can be offered 2) work can be implemented to manage any gaps or risks associated with changes. To support the former, Well Doncaster officers undertake regular population health management insight with community organisations in Balby identifying their current status and needs, and work with each group to meet their goals. This is a living document and will be updated and adapted as needs are met and change. Please see [appendix](#) for the most up-to-date document or if you would like more detail on this please contact [welldoncaster@doncaster.gov.uk](mailto:welldoncaster@doncaster.gov.uk)

## Community Information

### Population and Diversity

The Census 2022 data shows that most residents in Balby class themselves as “white UK” but Balby does have a large BAME (Black Asian and Minority Ethnic) community with more figures more than double that compared to Doncaster.

Ethnic Group	Balby	Doncaster	England
Asian	4.2%	2.9%	9.6%
Black	3.8%	1.2%	4.2%
White	86.5%	93.1%	81.0%
Other ethnicity	5.5%	2.7%	5.2%

### Population size

- Balby (overall): 20,000

### Age Profile

The age profiles of Balby are younger than that for England, with higher proportions of children, young people and working-age adults and lower proportions of older people. This could be driven by a lower life expectancy linked to greater levels of deprivation and associated health conditions. It could also possibly be explained by the increasing numbers of families with children moving into the area in recent years and the transient nature of BAME communities.

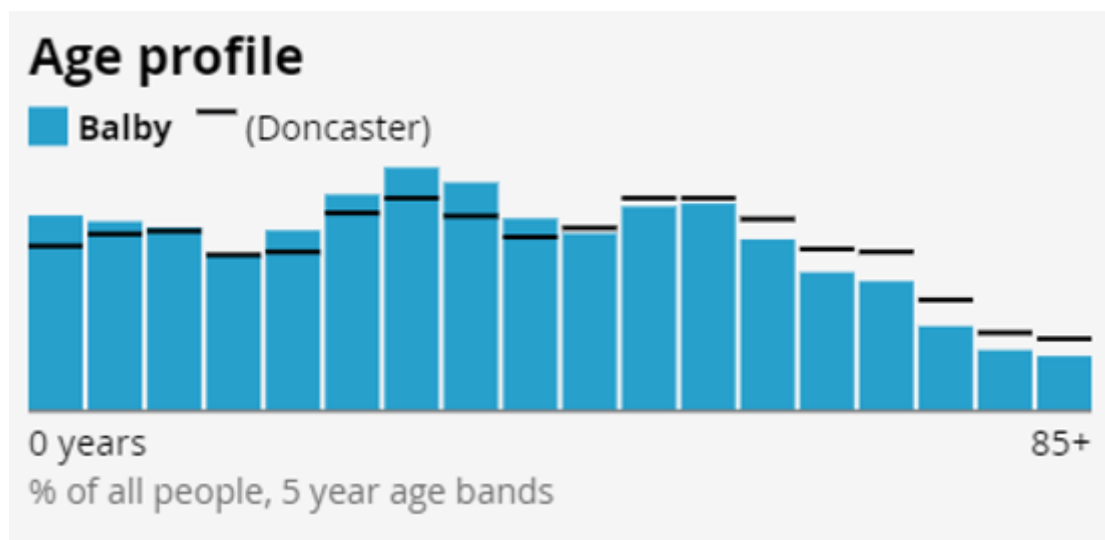


Figure 12. Age profiles of Balby communities

## Housing

The area has a high density of housing. There is a mixture of traditional terrace housing, some bungalows and some newer build properties, with a few single person flats.

Outright owning a house in Balby is lower (24.8%) compared to that of Doncaster (33.6%). The remaining residents living in Balby are equally split by private renting or live rent free (27.4%) socially renting (26.4%) and owns with a mortgage/loan (21.4%). They are all higher compared to Doncaster's rates (19.7%), (17%) and 29.6% respectively.

St Leger Homes is the main provider of Doncaster's of Social Housing. St Leger homes own 1633 properties across Balby North/Hexthorpe (287) and Balby South (1346) and this comprises of 1 bed bungalows (112) (276), 2 bed bungalows (26) (196) 3 bed (0) (3), 1 bed flats (55) (109), 2 bed flats (1) (0), 2 bed houses (15) (140), 3 bed houses (76) (605), 4 bed houses (1) (16), 5 bed houses (1) (0), 6 bed houses (0) (1) and homeless family properties (2) (19).

The majority of the social housing renters are aged 66+ years in Balby North/Hexthorpe and between 46-65 years in Balby South.

St Leger homes also has an outstanding amount of rent arrears from those living in Balby North/Hexthorpe, 2021/2022 the amount owed is £16,023 and for 2022/2023 the amount is £18,832. For Balby South the rent arrears is extremely high, for 2021/2022 the amount owed is £119,769 and for 2022/2023 the amount is £123,090.

The 2021 Census data has produced estimates that classify households in England and Wales by four dimensions of deprivation: employment, education, health and disability and household overcrowding. Balby has a slightly lower proportion of households not in any deprived dimensions (37.7%) compared to Doncaster (43.7%) and England (48.4%). It also has higher proportion of households in all other dimensions: one dimension: Balby (37.2%), compared to Doncaster (34.7%) and England (33.5%). Two dimensions; Balby (18.4%) Doncaster (16.7%), England (14.2%). Three dimensions; Balby (6.2%) Doncaster (4.6%) and England (3.7%) and four dimensions: Balby (0.5%), Doncaster (0.2%) and England (0.2%).

## Community Insight

### Appreciative Inquiry

The Well Doncaster Team undertake Appreciative Inquiry (AI) within communities to gather insight to support co-designing action plans with the community. Armstrong (2020) suggests in his work 'A changing world, again, how Appreciative Inquiry can guide our growth' that reframing the questions and drawing on strengths and assets from past positive experience will help participants as they restructure their community. The AI questions are structured to pull on the successes of the past and present, to seek new potentials and possibilities and to build on those through the Dream and Design stages.

The Appreciative Inquiry will include the following steps:

1. **Discovery Phase** – This will involve engagement with the residents of Hyde Park to find out what is working well in the community. Responses will be themed to allow priorities of the community to be established.
2. **Dream** – Residents and key stakeholders will be invited to attend an initial workshop to discuss what ideas they have for their community and how these will meet the priorities highlighted in the discovery phase.
3. **Design** – All attendees are invited back for a second workshop to develop an action plan to direct work for the community.
4. **Destiny** – A collaborative way of working and investing resources to meet the actions from the previous phase.

In 2020, due to Covid-19 the Discovery stage was carried out through an online survey and face-to-face questions in the community. Dream and Design workshops took place via Microsoft Teams. After this exercise, the following three key priorities were identified: community engagement, provisions for children and young people as well as communication. This insight, together with other local and borough wide views will be integrated into insight gathered in the next AI in the summer of 2022.

In May 2022, community explorers spent 2 weeks talking to people in Balby and had 121 conversations with members of the community.

The themes that were identified during the discovery phase are below and strengthen previous insight:

- Green Spaces
- Connectivity
- Community
- Family Friendly
- Housing and amenities

Residents were invited to a series of community workshops and identified 5 priorities: Green spaces, Housing and amenities, Connectivity, Community

Green Spaces	<p><i>“There is a variety of parks offering different activities”</i></p> <p><i>“As a family we like the park and walled garden located in the St Cath's grounds”</i></p> <p><i>“Plenty of activities for my children, parks and walks along the river”</i></p> <p><i>“Nice walks especially the golf course, park and dog walkers” (BP16)</i></p>
--------------	--



	<p><i>"Parks have improved" (BP19)</i></p> <p><i>"Green spaces good for mental health and exercise, ability to get to Lakeside via pathways that avoid roads" (BP5)</i></p>
Housing and Amenities	<p><i>"The shops are near, not far from town"</i></p> <p><i>"Close to amenities, school, shops, town centre, nature walks"</i></p> <p><i>"St Johns church which offers activities"</i></p> <p><i>"Area is being developed- new houses etc, good local amenities local shops etc"</i></p>
Connectivity	<p><i>"Enjoys a walk into the town centre Balby is a good central location"</i></p> <p><i>"Lidl, local to motorway, racecourse good connections."</i></p> <p><i>"Very central location, you can usually get to most places very quickly. Good transports"</i></p> <p><i>"Good links to road network, public transport has now been reduced which is worse"</i></p> <p><i>"Area is being developed- new houses etc, good local amenities local shops etc" (BP2)</i></p> <p><i>"Handy for town and transport" (BP12)</i></p> <p><i>"Nice café-Flourish, Yorkshire bike shack- take my bike to be fixed" (BP21)</i></p>
Community	<p><i>"Strong community"</i></p> <p><i>"Food bank and coffee morning is well attended and really friendly atmosphere"</i></p> <p><i>Good community and gets on well with neighbours"</i></p> <p><i>"it's good for my wellbeing, talking to people, knowing if I was away, elderly people feel safer, sharing baking and chatting, trust to others"</i></p> <p><i>Friendly, help each other out" (BP6)</i></p>

	<p><i>"I live alone so to be able to go to the church and meet people and have discussions is important to me" (BP940)</i></p> <p><i>"Family time and feeling safe when out and about" (BP931)</i></p>
Family Friendly	<p>"Small circle of childminders, friendly, close with similar interests"</p> <p>"Schools are close"</p> <p>"I like local groups and bringing my son to activities at the family hub. I like meeting other families and spending time outside"</p>

Following on from our first workshop we discussed the 5 themes, residents loved their green spaces but were also concerned regarding litter and safety, to help improve their green spaces Street scene, the parks team and the local community policing team were invited along to the next meeting where we discussed how we could improve on the areas of concern.

## Doncaster Talks

In 2019, Doncaster Talks undertook insight across the borough of Doncaster. Responses were separated into wards and thematically analysed. Across Balby and Hexthorpe, a total of 215 responses were recorded and the main themes on what people liked about the area, what could be improved, and what the borough should focus on are displayed in the table below. From this total, 144 were recorded in Balby North and 71 responses in Balby South.



## HEXTHORPE & BALBY

### Like

- Good access to town centre
- Good areas of greenspace
- Good community spirit
- Lots of local amenities and groups

### Improve

- Cleaner streets and less fly-tipping
- ASB in the local area
- Local community services and more stuff for people to do

### Focus

- More activities to bring people together on leisure and culture
- Cleaner streets and less fly-tipping
- Better job opportunities
- Invest in the town centre – too many empty shops



## BALBY SOUTH

### Like

- Neighbours and community
- Quiet area
- Green spaces

### Improve

- Cleaner streets, less litter and fly-tipping
- ASB - including motorcycle nuisance
- Tackle crime through more visible policing

### Focus

- General maintenance, litter, and cleaning
- Regeneration in town centre (especially Waterdale)
- ASB including - crime, drugs, begging – tackled through more and better policing
- Help and support for homeless

*Figure 13 and 14. Doncaster talks*

## Citizens Advice Doncaster Borough

The data provided by Citizens Advice Doncaster Borough shows us that the Central Locality (1017) has the highest number of clients registered with the service compared to the other localities: North 546, South 611 and East 608.

From April 2023 to the current day there has been 7254 new interactions from Central residents. 704 of them are repeat interactions covering 636 postcode areas. The table below shows a comparison from all localities as a whole to the Balby North/Hexthorpe- Balby South

<b>Data collation information</b>	<b>Central Locality</b>	<b>Balby North/Hexthorpe</b>	<b>Balby South</b>	<b>East Locality</b>	<b>South Locality</b>	<b>North Locality</b>
Clients	1017	215	95	608	611	546
New Interactions	7254	1386	609	4756	4787	3587
Postcodes covered	636	122	72	435	438	401
Repeat Interactions	704	129	41	322	399	224
Top Issue for advice/info	Debt	Debt	Debt	Debt	Debt	Benefit & Tax credits
Total Income gain	£945,020	£216,335	£106,998	£745,520	£938,886	£491,758

## Stronger Families

### Crime/ASB

Data provided by City of Doncaster Council Community Safety team shows that the number of Anti-Social behaviour, early intervention, hate crimes and low-level crime in the Central locality is the second highest for Doncaster.

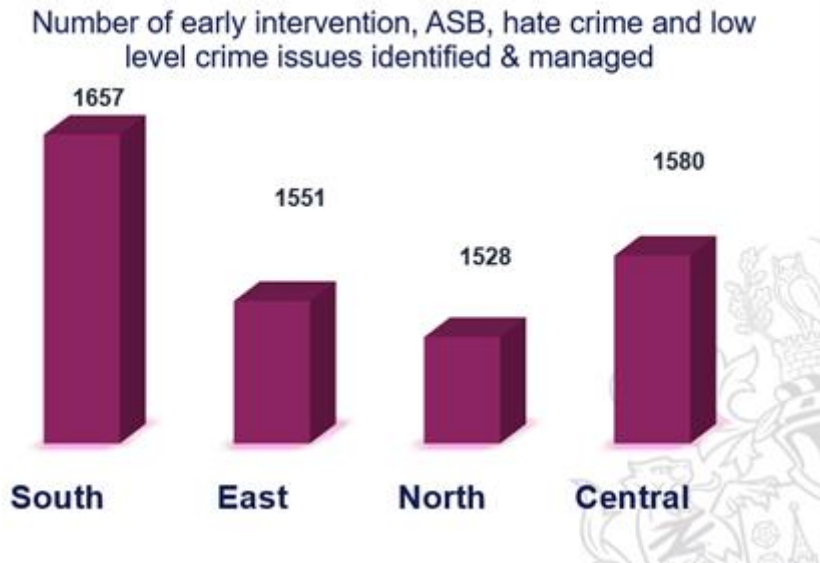


Figure 15. Stronger Families Crime/ASB behaviour 2023

Upon further breakdown the data shows that from 1580 incidents/report 409 of them are reported in Balby North/Hexthorpe and 270 are recorded as being in Balby South.

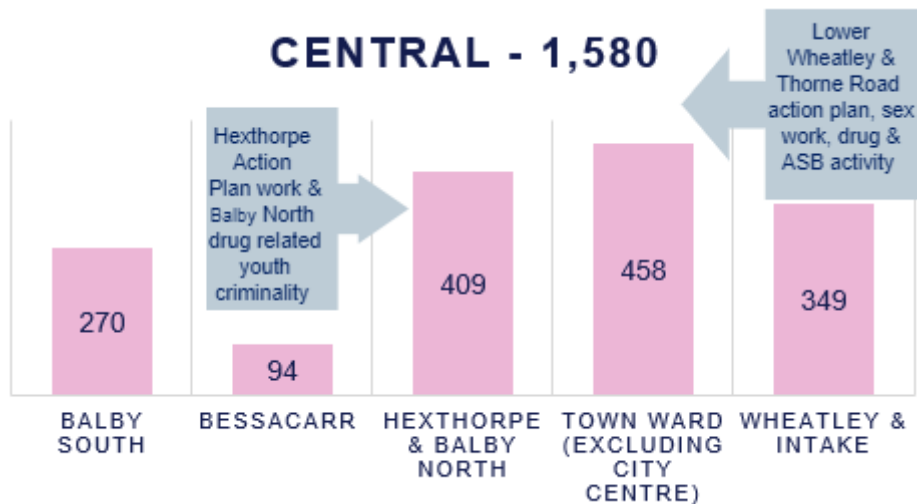


Figure 16. further breakdown of locality data into communities 2023

Through partnership working with South Yorkshire Police data has been provided of ASB (Anti-Social Behaviour) incidents reported to the police. The Central Locality currently has the highest ASB reports with 604 recorded.

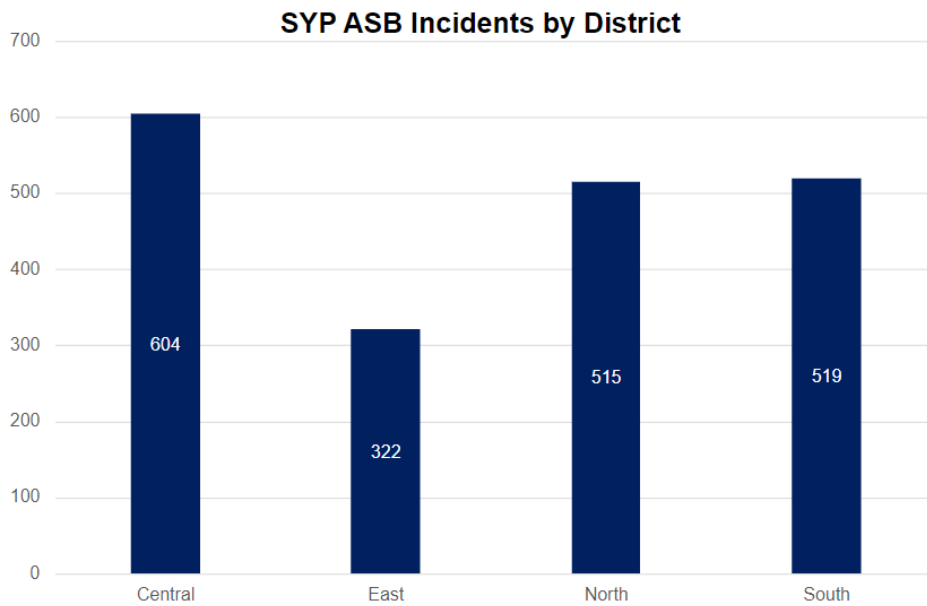


Figure 17. SYP ASB incidents for localities 2023

### Vulnerable Victims

The number of vulnerable victims for each Locality is also recorded from the table below you can see that Central is again the second highest area of Doncaster. East Locality (82) has double that of Central (41) but likewise Central has more than double the North Locality (22).

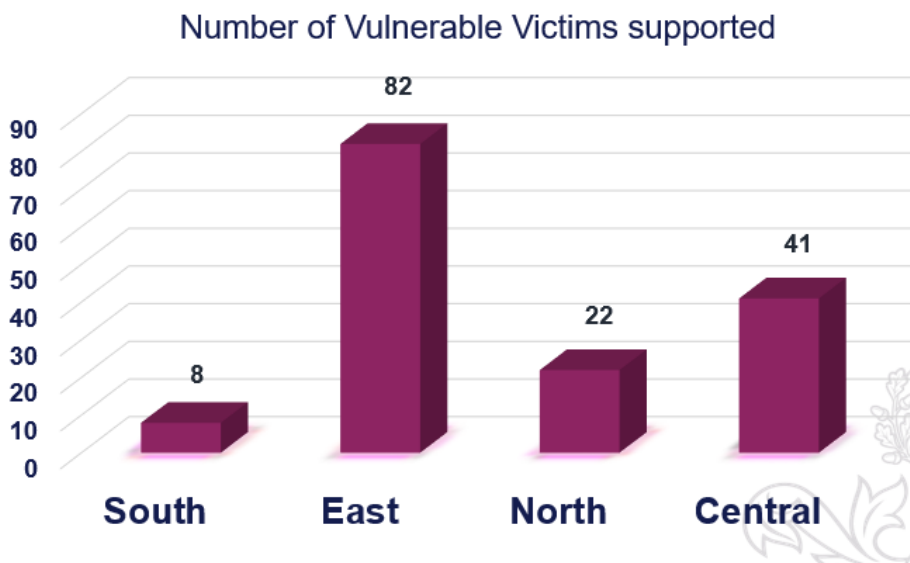




Figure 18. Vulnerable Victims recorded by Locality 2023

Of the 41 vulnerable residents recorded in Central Doncaster, 12 of them are based in Balby North/Hexthorpe and 2 in Balby South.

### Wellbeing Service

This is one of the services run by CDC (City of Doncaster Council) Stronger Communities team, the service covers helping residents with financial support, physical health, housing, mental health and social isolation.

Community Ranking for using service	2021-2022	2022-2023	2023-2024
1	Wheatley & Intake	Wheatley & Intake	Wheatley & Intake
2	Rossington & Bawtry	Rossington & Bawtry	Bessacarr & Cantley
3	Thorne & Moorends	Mexborough	Mexborough
4	Adwick & Carcroft	Adwick & Carcroft	Hexthorpe & Balby North and Bentley
5	Town/City Ward	Bessacarr & Cantley	Rossington & Bawtry and Town/City Ward

The table above shows the Central communities who use this service the most.

### Community Investment

Over the last 3 years there has been £2.42 million of investment into the Central Locality from Public Health and partnerships. This investment has been successfully applied for by partners and VCFS (Voluntary Community and Faith Sector) groups. The top 3 areas of funding spend has gone to support Youth Activities (£348,604), Community Engagement employment (£287,915) and Mental Health (£234,312).

The top 3 areas of spending in Balby North are: Community Engagement Worker (£94,560), Health & Wellbeing for adults (£144,072) and Physical Activity (£27,400)

The top areas of spending in Balby South are Health and Wellbeing for Adults (62,104), Improving Community Spaces (£58,000) and one to one support (£32,800).



## Locality Plan

Locality plans look at how we can together to strengthen communities and improve the lives and opportunities for residents living there.

The Central Locality Plan has been developed in conjunction with residents and sets out what will be done to improve the community over the next 12 months. Communities were engaged with through a number of different ways:

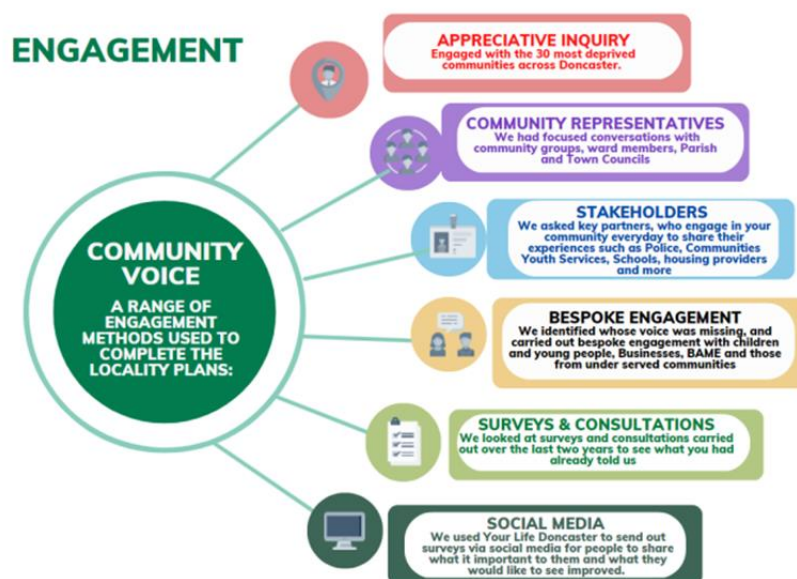


Figure 19. Community Voice engagement methods

The 2023-24 Locality Plan for the Central Communities outlines a set of priorities and can be viewed using the following link: [Central Locality Plans - YourLifeDoncaster](#)

## References

Armstrong, A.J., Holmes, C.M. and Henning, D., 2020. A changing world, again. How Appreciative Inquiry can guide our growth. *Social Sciences & Humanities Open*, 2(1), p.100038.

## Appendix

### Well Doncaster Annual reports

Well Doncaster Approach: <https://youtu.be/e1RKOZoGI10>

More information about how Well Doncaster has been meeting outcomes and objectives can be found in past and present annual report:

<https://welldoncaster.wordpress.com>

#### Census data 2021

The census is undertaken by the Office for National Statistics every 10 years and gives us a picture of all the people and households in England and Wales.

[Build a custom area profile - Census 2021, ONS](#)

[Census Maps - Census 2021 data interactive, ONS](#)

#### Public health Data

##### Public Health Data

##### Fingertips

This is a new fingertips profile that uses data from Local Health an existing PHE data tool. Local Health is a collection of quality assured health information presented for small geographical areas. By presenting data for small areas, Local Health provides evidence of inequalities within local areas. It supports targeted interventions to reduce such inequalities. Local Health contains indicators related to:

- Population and demographic factors
- Wider determinants of health
- Health outcomes

It presents data for middle super output areas (MSOA), electoral wards, clinical commissioning groups (CCG), local authorities, and England as a whole.

Please note, as the Local Health tool was designed to allow users to map small area data, a mapping option has not been provided in this profile.

<https://fingertips.phe.org.uk/profile/local-health/data#page/0>

[Local Health - Public Health England - Reports: get a dashboard on a custom area](#)

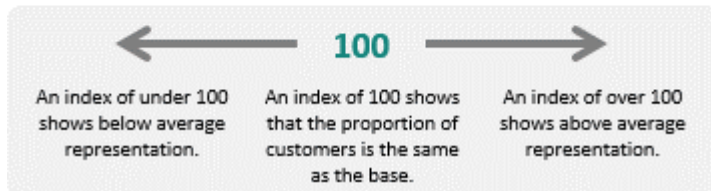
#### Acorn profiles

Wellbeing Acorn segments the population into 4 groups (Health Challenges; At Risk; Caution; Healthy) and 25 types describing the health and wellbeing attributes of each postcode across the country. By analysing significant social and health related behaviour, it provides precise information and an in depth understanding of upstream issues affected by current lifestyle traits

## INTERPRETING THE REPORT

The Wellbeing Acorn profile report helps you understand the underlying demographics, lifestyle and health attributes of your customers and service users by comparing their Wellbeing Acorn profile to a base (e.g. UK population, area or other customer groups).

### INDEX



The Wellbeing Acorn Profile contains 12 variables that are indicators of Disability or Infirmity in the population and 9 variables related to unhealthy Behaviours. The average score measured against the base profile of Yorkshire and the Humber is 100. A value above 100 indicates that the area population is overrepresented for this characteristic, below 100 the value is less than the average or underrepresented.

Get Doncaster Moving survey

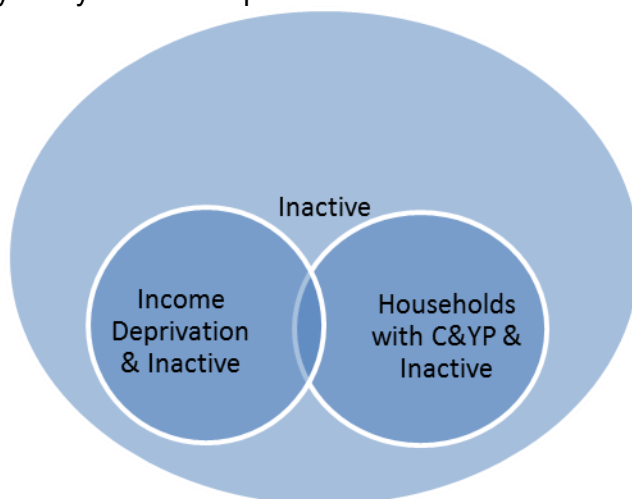
<https://getdoncastermoving.org/uploads/behavioural-insight-phase-one-summary-report.pdf?v=1644581925>

Mosaic data

Mosaic Public Sector classifies the UK population into one of 66 types and 15 groups through a detailed and accurate understanding of each citizen's demographics, lifestyles, behaviours and location.

The Physically Inactive Population of Doncaster

The Physically Inactive Population of Doncaster



The MOSAIC types who “Do not exercise” and “Do not take part in Sport” were searched and three priority groups have been identified through work with strategic partners as part of the development of Doncaster’s Physical Activity Strategy. The three priority groups are:

- The Inactive
- Families with children and young people
- People living in income deprivation

These groups are cross-referenced against the inactivity list allowing for the identification of MOSAIC types which are both likely to be inactive and living in deprivation as well as inactive and from households with children and young people.

Link to the Get Doncaster Moving strategy; [Let's Get Moving! | Get Doncaster Moving](#)

Pupil Lifestyle Survey 2022

[Pupil Lifestyle Survey - Healthy Schools \(healthylearningdoncaster.co.uk\)](https://www.healthylearningdoncaster.co.uk)

Power BI – Joint Strategic Needs Assessment

The Joint Strategic Needs Assessment (JSNA) is a process that identifies the current and future health and wellbeing needs of a local population. The dashboards show information about the employment, health, and wellbeing of people in Doncaster. We use this information to inform our policies and strategies to improve the lives of everyone in the Doncaster area.

[Joint Strategic Needs Assessments - Team Doncaster](#)