

# Hexthorpe Community Profile

## Well Doncaster



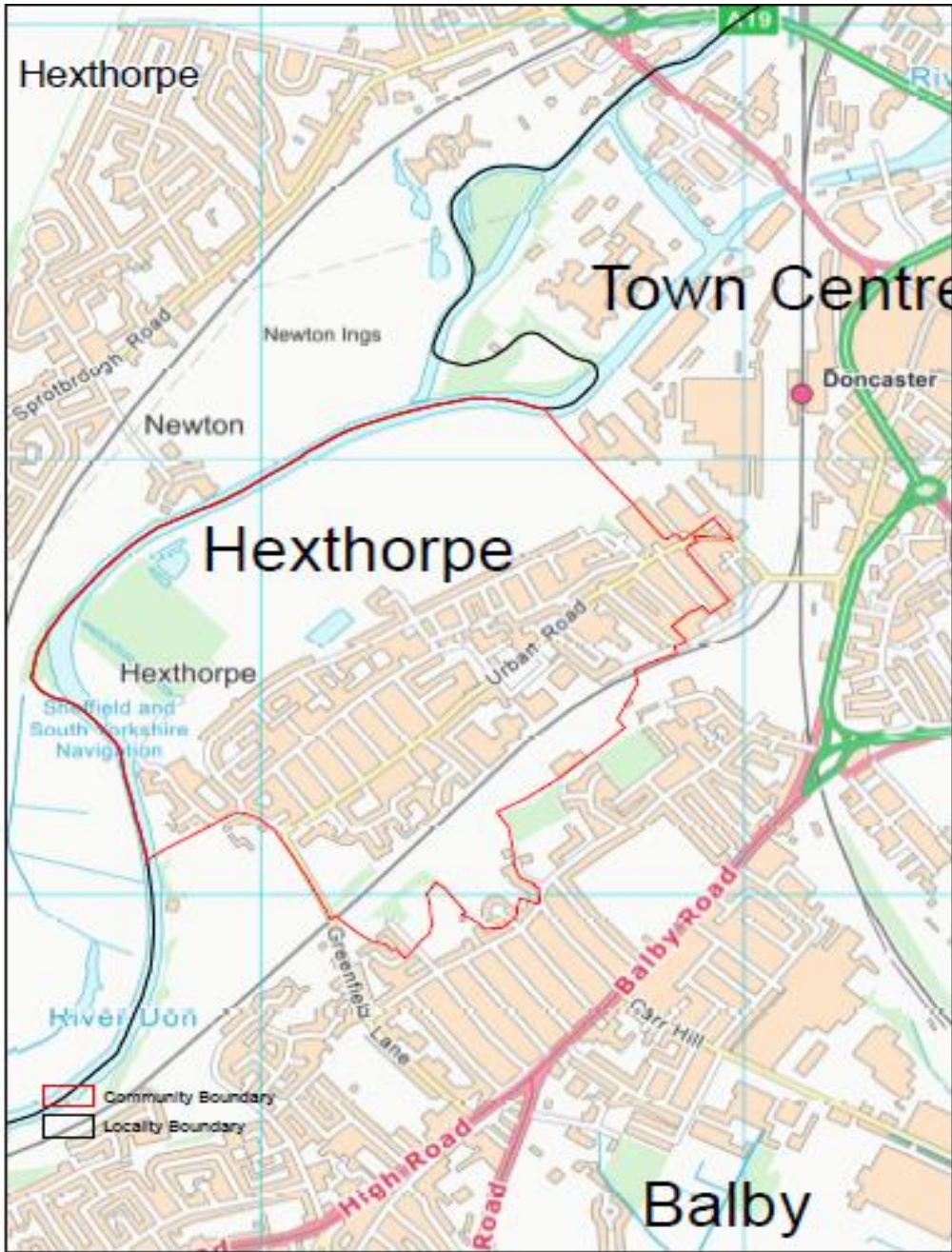
**Well Doncaster**

**Community Led Health and Wealth**  
Empowering people in Doncaster to live better, healthier, and happier lives.  
[www.welldoncaster.uk](http://www.welldoncaster.uk)

Well Doncaster  
**Community  
Wealth Builder**

Well Doncaster  
**Be Well**

 **City of  
Doncaster  
Council**



# Well Doncaster

## This Report

This report focuses on Hexthorpe, part of the Hexthorpe and Balby ward and begins with a summary outlining key information and priorities. This document builds on the initial community profile of 2021 and updated figures have been included where possible. The documents outline conversations with communities, including ward members, community organisations, faith groups, residents and other organisations who work in the area. Communities' knowledge of their own areas enables them to identify their strengths and the assets on which they can build on. This document is shared with the intention of supporting those conversations and sharing information that might not be readily available to local people.



## Contents

This Report.....	3
One page Summary.....	7
Key Health priorities.....	7
Assets .....	9
Asset Maps.....	9
Population Health Management.....	9
Assets in the Community .....	11
Health and Wealth.....	14
Deprivation .....	14
Health Inequalities.....	15
Employment .....	16
Foodbanks.....	17
Citizens Advice Doncaster Borough.....	17
Health Inequalities.....	18
Childhood Development.....	18
School Attainment.....	19
Long-Term Health Conditions .....	19
Life Expectancy .....	20
Alcohol .....	21
Smoking.....	22
Physical Activity.....	23
Green Spaces/Parks.....	24
Prevention and Control.....	<b>Error! Bookmark not defined.</b>
Community Information .....	25
Population size .....	25
Population and Diversity .....	25
Age profile .....	25
Housing.....	26
Stronger Families .....	27
Crime/ASB.....	27
Vulnerable Victims .....	29
Wellbeing service .....	30
Anti-Social Behaviour .....	30
Community Insight .....	31

Appreciative Inquiry .....	31
Green Space.....	32
Local Activities and Support: .....	32
Community Spirit and Pride:.....	32
Community Investment.....	32
Doncaster Talks.....	33
References .....	35
Appendix.....	36



# HEXTHORPE



**33%** of children are living in poverty



**37.9%** of population aged 16 years and over have **no qualifications**



**Cardiovascular Disease (CVD)** is the leading cause of death in Hexthorpe



**39.8%** **single person households** in Hexthorpe



**29.2%** identify as **Non-UK**



**42.9%** of Hexthorpe residents are **inactive**



## One page Summary

Hexthorpe is in the Central Locality of Doncaster. Hexthorpe and Balby North are within the same electoral ward and according to the 2021 Census, Hexthorpe has a total population of 3,700. Hexthorpe is one of the most diverse communities in Doncaster and has a high percentage of the Roma traveller community. Residents living in Hexthorpe are slightly younger than those living in other parts of Doncaster, there are higher proportions of children, young people, and working-age adults.

The area has a high density of housing with a mixture of traditional terrace housing, bungalows and a few single-person flats, the number of households is 1,700. There is a mixture of socially rented privately rented and owner-occupied housing in the area. Privately rented housing in Hexthorpe is significantly higher at 38.2% compared to Doncaster (17.7%) along with social renters at 26.8% compared with Doncaster's 17%. Hexthorpe was the first place in Doncaster to have a selective licensing scheme. This is still running on a two-tier system whereby Home Safe operate the self-managed tier and Doncaster Council run the second tier. The houses tend to be smaller in Hexthorpe compared to the national rates, 4 or more bedrooms 5.3% compared Doncaster's 16%. The majority of houses are 2 bedroom (38.7%) compared to Doncaster (23.6%) or 3 bedroom (39.6%) compared to England (53.2%).

Poverty and deprivation are significant challenges in Hexthorpe, the Index of Multiple Deprivation (IMD) score shows that Hexthorpe stands at 47.4, Doncaster as a whole is 30.3 and England is 21.7. 33% of children live in poverty compared to Doncaster as whole which stands at 22.7% and England (17.1%). There are higher proportions of unemployed residents, the latest data from the Office of Health Improvement and Disparities state that in 2021/22, 12.6% are unemployed in Hexthorpe and Balby North which is more than double that of Doncaster (6.1%) and England at (5%). The 2021 Census reveals that 37.6% people over 16 years of age in Hexthorpe are not in employment and never worked (Doncaster 27.6%) and 37.9% have no qualifications, this is significantly higher than Doncaster (24.6%).

People in Hexthorpe and Balby North have a significantly lower life expectancy and 19.3% of residents live with a limiting long-term illnesses or disability (England 17.6%). Death from all cancers is significantly higher with a value of 129.9 per 100 compared to England 100 per 100. Deaths from circulatory disease (126.2 per 100), coronary heart disease (165.3 per 100) and respiratory disease (150.8 per 100) are all significantly higher than England which is 100 per 100 for each. There are significantly higher emergency hospital admissions in Hexthorpe and Balby North for coronary heart disease, heart attacks and Chronic Obstructive Pulmonary Disease (COPD), indicating poor self-management and low health literacy.

A sizeable proportion of children in Hexthorpe and Balby North are overweight including obese (27%) and severely obese (14.65%) at reception age. These figures increase significantly at year 6 with 43% of children overweight or obese and 28% obese or severely obese.

Waste management and fly tipping is a continuing challenge in the community, particularly in the Balby Bridge area. There is a Public Space Protection Order (PSPO) in Hexthorpe which was renewed in 2021 until August 2024. There is a strong partnership approach to addressing these challenges through education, prevention, and enforcement.

## Key Health priorities

- Poverty influenced by high long-term unemployment and low qualification rates.
- High rates of long-term health conditions and significantly higher use of emergency services for Heart conditions and COPD

- Childhood development (including early years services, weight management, physical activity, and educational needs)



## Assets

Well Doncaster use a community-centred approach which allows investment in supporting, working with, and empowering communities to facilitate a healthy community. The voice and role of our communities and taking a strengths/assets-based approach to work with individuals, families and communities is crucial to the achievement our overall vision.

## Asset Maps

The maps below show different types of assets across Hexthorpe. These have been developed using ward boundaries, therefore, some assets in Balby North. Please refer to the [appendix](#) for larger maps.

This area covers any form of business open for trading such as betting shops, cafés and supermarkets.

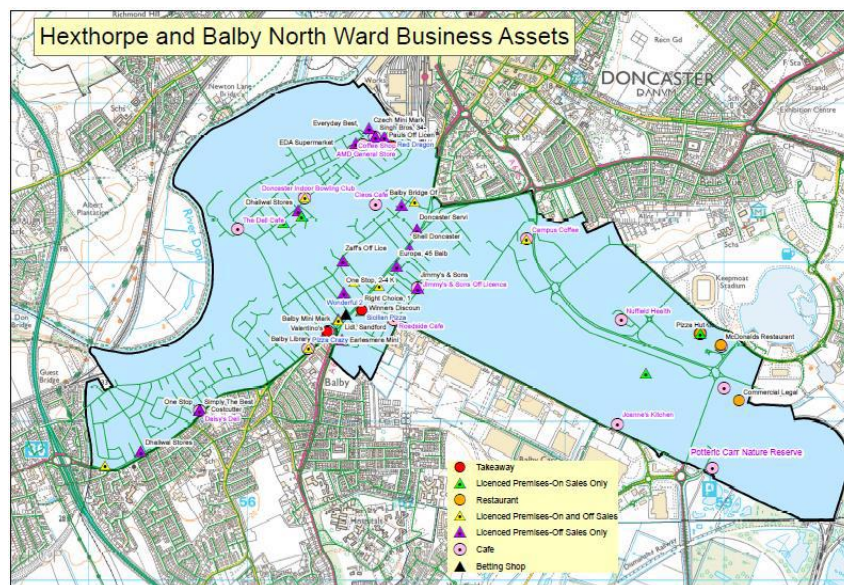


Figure 1. Hexthorpe and Balby North Ward business assets



## Assets in the Community

As part of a population health management approach, the following assets have been identified and themed around places and people:



<b>Institutions</b> (Schools / Colleges etc.)	<b>Physical Space</b> (Parks, car parks etc.)	<b>Local Economy</b> (Local Profit Business)
<p><b>Healthcare:</b></p> <ul style="list-style-type: none"> <li>• The Flying Scotsman Health Centre/ dentist</li> <li>• St John's Group Practice</li> <li>• Pickford's Pharmacy</li> <li>• JM McGill Pharmacy</li> </ul> <p><b>Schools:</b></p> <ul style="list-style-type: none"> <li>• Hexthorpe Primary Academy School</li> </ul> <p><b>Religious:</b></p> <ul style="list-style-type: none"> <li>• St John's Church (although based in Balby supports Hexthorpe residents)</li> <li>• Kings Cross Church</li> <li>• St Jude's Church</li> <li>• Sri Guru Arjan Dev Ji Gurdwara</li> </ul>	<p><b>Green space:</b></p> <ul style="list-style-type: none"> <li>• Hexthorpe park</li> <li>• Play area on Urban Road/MUGA</li> <li>• Hexthorpe Ings Allotment</li> <li>• Bramworth Road allotments</li> <li>• Crimpsall Allotments</li> <li>• Pullman Green</li> <li>• Florence Avenue Allotments</li> </ul> <p><b>St Leger communal halls:</b></p> <ul style="list-style-type: none"> <li>• Travis gardens - Base for small community groups including knit and natter, arts and crafts. The Youth association also use on occasions</li> </ul>	<p><b>Food &amp; Beverage:</b></p> <ul style="list-style-type: none"> <li>• Maltings Club (currently under development)</li> <li>• Star bar</li> <li>• Angie's tasty corner café</li> <li>• Various takeaways on Hexthorpe Road including Deano's Kebabs and Pizza, Nez Fried Chicken, Red Dragon, Dennis fish bar</li> </ul> <p><b>Shops/ Supermarkets:</b></p> <ul style="list-style-type: none"> <li>• Hexthorpe Post Office &amp; News's spot Newsagents</li> <li>• Various mini supermarkets/ convenience stores on Hexthorpe road</li> <li>• Star Bar (under development to become a convenience store)</li> </ul> <p><b>Care homes:</b></p> <ul style="list-style-type: none"> <li>• Patrick Stirling Court</li> <li>• Hexthorpe House</li> </ul>

		<ul style="list-style-type: none"> <li>• Crimpsall Day Centre</li> <li>• Ivy Court</li> <li>• Travis Gardens Assisted Living residence</li> </ul> <p><b>Other:</b></p> <ul style="list-style-type: none"> <li>• Wabtec railway</li> <li>• Unipart Rail</li> </ul>
--	--	---



<b>INDIVIDUALS</b> (Key Individuals within the community and why)	<b>ASSOCIATIONS</b> Local Groups/Clubs	<b>STORIES</b> (Good news stories)
<ul style="list-style-type: none"> <li>• Police Community Support Officers</li> <li>• Ward Members</li> </ul> <p><b>Community leaders:</b></p> <ul style="list-style-type: none"> <li>• Volunteer at St Johns church</li> <li>• Manager of the Junction</li> <li>• Expect youth worker</li> </ul>	<p><b>Support:</b></p> <ul style="list-style-type: none"> <li>• The Junction –Community advice and drop-in centre</li> <li>• Health Watch engagement activities, outreach, volunteers</li> <li>• Migration Action</li> </ul> <p><b>Sports clubs:</b></p> <ul style="list-style-type: none"> <li>• Doncaster Rowing club</li> <li>• Doncaster Indoor Bowling Club</li> <li>• Doncaster Plant Works</li> <li>• Amateur Boxing Club</li> </ul>	<p>The Friends of Hexthorpe Flatts have been out transforming the Park with New Plants.</p> <p>The HexFest (Art Festival) Is being brought back to life by local residents.</p> <p>More is being done with the streets that are part of Love Where you live</p>

<ul style="list-style-type: none"> <li>• Friends of Hexthorpe Flatts chair</li> <li>• The Hexpress writer</li> </ul> <p><b>Professionals:</b></p> <ul style="list-style-type: none"> <li>• St Leger Officer</li> <li>• Well Doncaster officer</li> <li>• Locality Development team</li> <li>• Communities team / Stronger communities' officers</li> <li>• Advance Program</li> </ul>	<p><b>Children:</b></p> <ul style="list-style-type: none"> <li>• The Youth Association</li> </ul> <p><b>Other:</b></p> <ul style="list-style-type: none"> <li>• Knit and Natter (Travis Gardens)</li> <li>• Hexthorpe arts group</li> <li>• Friends of Hexthorpe Flatts</li> <li>• Food Aware CIC (Community Interest Company)</li> <li>• Community Transport Service</li> <li>• Balby &amp; Hexthorpe Community Engagement CIC</li> <li>• Positive Action Group Hexthorpe</li> </ul>	<p>St John's church have been supporting residents across Balby and Hexthorpe</p>
---	---	---

### Ward Members

Below are the ward members for Hexthorpe and Balby North following elections in 2021.



Councillor Glyn Jones

Hexthorpe and Balby North  
Labour  
Deputy Mayor,  
Portfolio Holder for  
Housing and Business.



Councillor Sophie Liu

Hexthorpe and Balby North  
Labour

## Health and Wealth

Health inequalities are avoidable differences across the population and between different groups within society. Health inequalities arise from the conditions in which we live, work and play. These conditions influence our opportunities for good health, how we think, feel and act, therefore shaping our health and wellbeing.

### Deprivation

Evidence shows that people living in our most deprived areas face the worse health inequalities in relation to health access, experiences, and outcomes. Deprivation covers a range of issues and refers to unmet needs caused by a lack of resources, including but not limited to finances, housing and education. It is measured in different ways including the Indices of Multiple Deprivation (IMD).

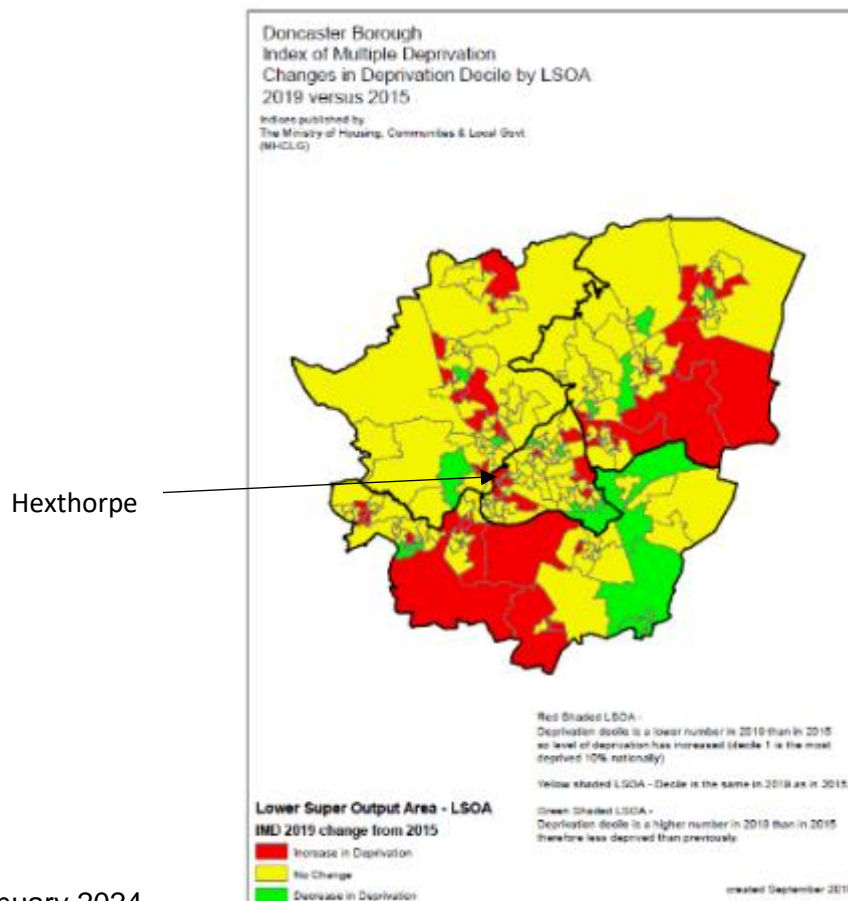


Figure 4. *Doncaster Index of Multiple Deprivation changes between 2015-2019*

The map above and table below illustrate Hexthorpe as one of the most deprived communities in Doncaster. IMD data shows deprivation levels have declined in Hexthorpe from 2015 to 2019. Hexthorpe and St Sepulchre Gate West is now the fifth most deprived area in Doncaster with only Mexborough Windmill, Mexborough Main Street, Denaby Main and Balby Bridge communities to have a higher IMD score.

Table 1. Index of Multiple Deprivation Rank in 2019 and 2015

<b>Top 10 most deprived 2019</b>	<b>Rank</b>	<b>Top 10 most deprived 2015</b>	<b>Rank</b>
Balby Bridge	55	Balby Bridge	118
Denaby Main	63	Denaby Main	129
Mexborough Main Street	249	Mexborough Main Street	463
Mexborough Windhill	282	Mexborough Windhill	718
Hexthorpe & St Sepulchre Gate West	507	Mexborough Adwick Road North	720
Old Denaby	542	Hexthorpe & St Sepulchre Gate West	735
Stainforth South	793	Stainforth South	982
Highfields	950	Old Denaby	1125
Mexborough Adwick Road North	970	Conisbrough North	1163
Balby St Peters Road	997	Lower Wheatley North Bridge	1313

Note; Higher numbers indicate lower levels of deprivation

The 2021 Census data has produced estimates that classify households in England and Wales by four dimensions of deprivation: employment, education, health and disability and household overcrowding. Hexthorpe has significantly lower proportion of households not in any deprived dimensions (29.4%) compared to Doncaster (43.7%) and England (48.4%). It also has significantly higher proportion of households in all other dimensions: one dimension: Hexthorpe (40.7%), compared to Doncaster (34.7%) and England (33.5%). Two dimensions; Hexthorpe (22.2%) Doncaster (16.7%), England (14.2%). Three dimensions; Hexthorpe (6.8%) Doncaster (4.6%) and England (3.7%) and four dimensions: Hexthorpe (0.5%), Doncaster (0.2%) and England (0.2%).

## Health Inequalities

There is a significantly high proportion of residents experiencing poverty, with 50% of the households having an income of less than £20k. 24.7% of the population are experiencing income deprivation in the ward. 2020 modelled figures estimate 24.6% of residents are living in fuel poverty. Fuel poverty is defined as a household living on a lower income that is not deemed reasonable enough to warm a home sufficiently. In 2018, 11.3% of adults were unable to warm their homes to a reasonable standard. Older people living in deprivation is another area of concern. In Hexthorpe, income deprivation affects all ages with 24.4% of older people and 33% of children living in deprivation.

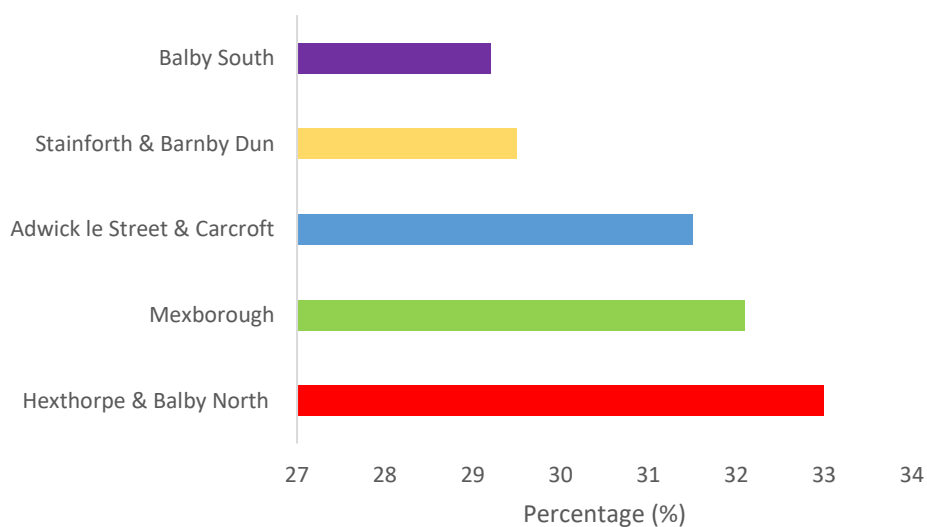


Figure 5. *Percentage of Income deprivation affecting children (Deprivation Affecting Children Index (IDACI, %)*

## Employment

Unemployment is significantly higher in Hexthorpe and Balby North at 12.6% which is more than double that of Doncaster (6.1%) and England (5%). Long term employment rates in 2021-22 was 2.8%, not significantly higher than that of Doncaster (1.55) and England 1.9%). The 2021 Census highlights that 14.7% were not in employment but had worked in the last 12 months, 47.7% were not in employment and had worked in the last 12 months and 37.6% had never worked. Hexthorpe and Balby North ward have the highest population of Universal Credit claimants in Doncaster (9.38%). When broken down by LSOA (Lower Super Output Area), two are in the top LSAOs in Doncaster with the highest percentage population of claimants; Hexthorpe 12.42% and Hexthorpe and St Sepulchre Gate West 11.72%. The majority of over 16-year-olds in work are working full time hours (59%) and are working low skilled jobs; process, plant, and machine operatives (Hexthorpe 14%, Doncaster 10.3%) and elementary occupations such as manual labour jobs (Hexthorpe 34.1%, Doncaster 16.5%).

A significantly lower proportion of the community work mainly from home (Hexthorpe 10%, Doncaster (18.5%). This is likely linked due to the high proportion of low skill and elementary occupations in the community. A significantly higher proportion of people aged 16 years and over in Hexthorpe travel less than 10km to work (51.3%) compared to the rest of Doncaster (41.7%). 2021 Census data also shows that there are significantly more households with no car or van in Hexthorpe (50.9%) compared to Doncaster (24.4%). Significantly higher proportion of residents in Hexthorpe travel to work by taxi (3.7%) bus, minibus, or coach (10.7%), bicycle (3.6%) on foot (9.7%) compared to Doncaster (1.1%, 4.6%, 1.8% and 7.1% respectively). This could be influenced by the central location of Hexthorpe and proximity to public transport links.



## Food Poverty

There are 8 active foodbanks in the Central locality of Doncaster. On average in quarter 2 (Jul – Sept 23) 311 adults and 127 children per month who were supported by Central Foodbanks.

There is not one directly situated in Hexthorpe, but all foodbanks can be sourced from the residents in this community. On average 514 people receive a food parcel from the foodbanks in this locality per month.

## Citizens Advice Doncaster Borough

The data provided by Citizens Advice Doncaster Borough shows us that the Central Locality (1017) has the highest number of clients registered with the service compared to the other localities: North 546, South 611 and East 608.

From April 2021 to the current day there has been 7254 new interactions from Central residents. 704 of them are repeat interactions covering 636 postcode areas. The table below shows a comparison from all Localities as a whole to the Hexthorpe/Balby North ward.

<b>Data collation information</b>	<b>Central Locality</b>	<b>Hexthorpe/Balby North ward</b>	<b>East Locality</b>	<b>South Locality</b>	<b>North Locality</b>
Clients	1017	215	608	611	546
New Interactions	7254	1386	4756	4787	3587
Postcodes covered	636	122	435	438	401
Repeat Interactions	704	129	322	399	224
Top Issue for advice/info	Debt	Debt	Debt	Debt	Benefit & Tax credits
Total Income gain	£945,020	£216,335	£745,520	£938,886	£491,758

## Health Inequalities

### Childhood Development

Children classified as overweight (including obese) in reception are more prevalent in Hexthorpe & Balby North (27.6%) compared to Doncaster (25.5%) and England (22.6%). This trend continues into year 6, where numbers of children are reported to be overweight, obese, or severely obese increase significantly.

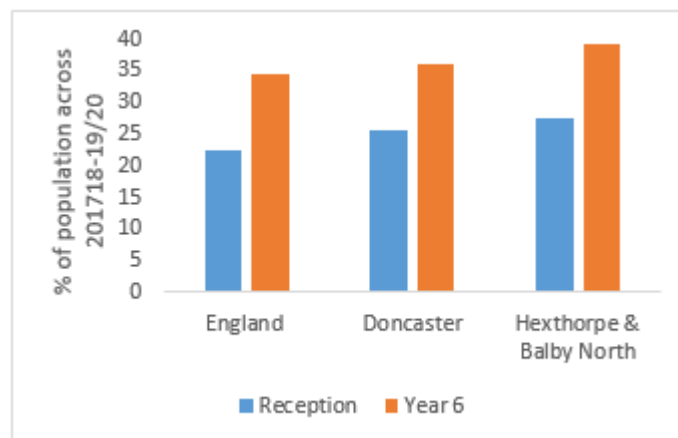


Figure 6. Average levels of obese and overweight children in reception

The Pupil Lifestyle Survey is conducted by Doncaster City Council to provide valuable data on children and young people's health-related behaviour, through an anonymous school-based questionnaire. Data from the survey has provided a set of Doncaster-wide figures at key points in children and young people's development; KS2, 3 and 4. The 2022 Pupil Lifestyle Survey saw 176 pupils from Hexthorpe and Balby North from Years 4, 6, 8 and 10 complete the survey. Of the responses, 48% were boy and 47% were girls. 16% reported themselves as having a Special Educational Need which was the highest in the borough and significantly higher than Doncaster (10%). When asked if they receive extra help in school, 59% reported that they did, significantly higher than Doncaster 48%. The 2021 Census reports that qualification attainment is significantly low in Hexthorpe, with 37.9% of people 16 years and over having no qualifications compared to Doncaster (24.6%) and England (18.1%) and the majority having level 1, 2 or 3 qualifications (36.4%) compared to Doncaster (43.1%) and England (39.9%).

Teenage pregnancies are considerably high in Hexthorpe & Balby North with 2.7% of new mothers being teenagers in 2015-19. This is more than double across Doncaster (1.2%) and England (0.7%).

In the 2022 Pupil Lifestyle Survey saw 14% reported having a long-standing illness higher than Doncaster (17%) and 7% reported having a disability which is in line with the rest of Doncaster.

When asked about healthy eating and wellbeing, 86% report having breakfast and school dinners, this is in line with Doncaster. There is a significantly higher proportion of children

accessing free school meals with 30% compared to 19% for Doncaster. 96% reported feeling warm and comfortable at home, 88% feel able to clean themselves at home and 80% reported having a restful night's sleep. These are all in line with Doncaster.

When asked if they get love and support at home, 81% reported they did. 85% feel safe at home, which is slightly lower than Doncaster's 89% and 86% reported having a safe place at home or near home to play.

### School Attainment

The Department for Education supplies each local authority with the school attainment grades for those in KS2 and KS4.

At KS4, each pupil is given an Attainment 8 score (a score out of 90) based on their 8 best GCSE grades including English, maths and at least 3 other traditional academic GCSEs (sciences, languages, and humanities). Other qualifications at an equivalent level (e.g. BTECs) can also count towards the score. In 2019, average GCSE attainment 8 score per pupil (out of 90) was 26.2 in Hexthorpe, this is lower than both Doncaster overall (44) and nationally (46.7). In 2022 the results are slightly higher at an average of 32.1 for Hexthorpe, Doncaster at 45.2 and nationally at 48.8

In 2023 for KS2, 33% of pupils achieved the expected standard in reading, writing, and mathematics in Hexthorpe, a small rise of 3% since 2022. This is extremely low compared to Doncaster as a whole (55%) and also the national percentage of 60%.

Three children have been recorded as receiving Elective Home Education and Thirty-Seven recorded as missing education in Hexthorpe (City of Doncaster Council, 2023).

### Long-Term Health Conditions

The proportion of residents with poor health in Hexthorpe and Balby North is considerably greater than the national average. Over 21.4% of residents reported having poor to very bad health compared to an average of 17.9% across England and 19.3% are living with a limiting long-term illness compared to 21.7% for Doncaster and is significantly higher than England (17.6%).

In the 2021 Census, 19.6% of Hexthorpe reported having a disability under the Equality Act which is in line with Doncaster (20.3%) and slightly higher than England (17.3%). Emergency hospital admissions from residents living in Hexthorpe and Balby North for life limiting health illness are all significantly higher than Doncaster and England. COPD has the highest value of 191 per 100 compared to England at 100 per 100, followed by Myocardial Infraction (heart attack) 161.7 per 100 compared to England at 100 per 100. There are significantly high rates of Lung cancer, 180.2 per 100 compared to England 100 per 100. Hospital admissions for harm and injury is also significantly higher with alcohol attributable conditions at 143.1 per 100 compared to England at 100 per 100 and intentional self-harm 194.7 per 100 compared to Doncaster 121.6 per 100 and England 100 per 100.

Many engage in poor lifestyle choices, including smoking (24.0%), 7% of those smoking reported to smoke 20+ cigarettes a day, increased alcohol consumption (15.8%) may be contributing factors.

## Life Expectancy

Death rates from all causes and all ages across Hexthorpe and Balby North are greater than those of for England. Hexthorpe and Balby North has the highest rate of deaths in under 75s across Doncaster (158.9 per 100), majority of which are considered preventable (185.3 per 100).

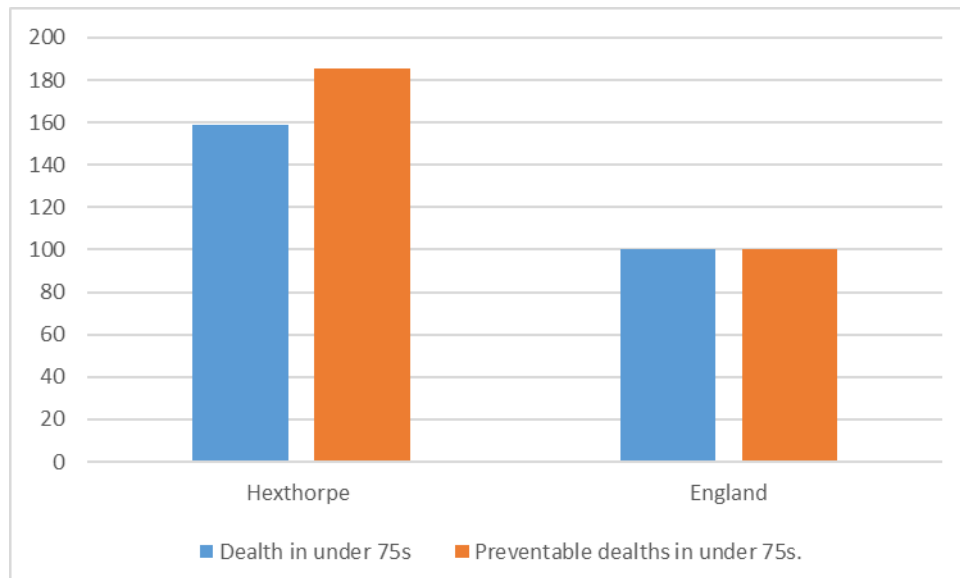


Figure 7. Comparison of deaths in under 75s and preventable deaths in under 75s

Coronary Heart Disease (CHD), respiratory disease and Circulatory disease are the leading causes of death and is likely linked with high smoking and alcohol consumption rates.

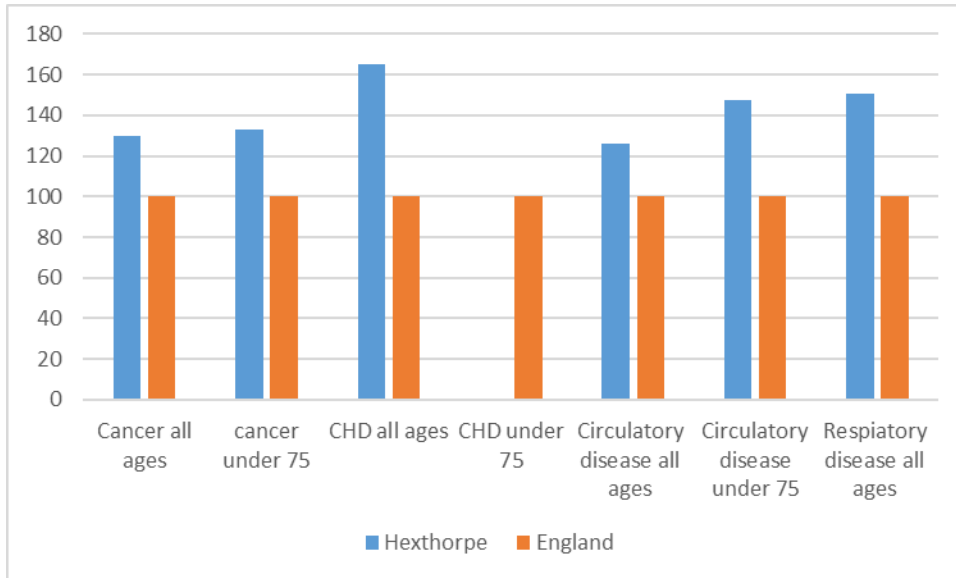


Figure 8. Deaths caused by health conditions considered preventable, all ages, standardised mortality ratio during 2015 – 19

### Alcohol

The data supplied by Public Health Fingertips data shows that Hexthorpe/ward is the 3<sup>rd</sup> highest population of Doncaster with hospital admissions of alcohol attributable conditions (broad definition)

Hexthorpe/ward has a rate of 153.5 compared to Doncaster at 112.7 and is significantly higher than England at 100.0.

Doncaster	112.7	
Bentley & Toll Bar	158.1	
Conisbrough North	154.0	
Hexthorpe & Balby North	153.5	
Edlington	146.1	
Belle Vue & Town Fields	133.3	
Mexborough West	132.3	
Central Doncaster & Hyde Park	132.1	
Cantley Park	129.8	
Mexborough East	125.9	
Intake	125.8	
Moorends	125.0	
Conisbrough South	123.3	
Balby Carr	122.1	
New Rossington	122.1	
Balby South	119.8	
Stainforth	119.7	
Armthorpe North	118.5	
Carcroft	118.3	
Wheatley Hills	116.8	
Thorne	116.3	
Adwick le Street & Woodlands	113.7	
Armthorpe South	113.0	
Hatfield West	111.6	
Bentley Rise	111.6	

Figure 9. Alcohol attributable admissions 20/21 (broad definition)

## Smoking

In Doncaster we have 37 GPs, of which they provide data for their patients who when registered, register as a smoker. Doncaster has 274,681 patients registered aged 15+ of this 49,332 are down as being a smoker (17.96%). Doncaster has the highest percentage of registered smoked compared to our surrounding boroughs Rotherham (16.48%), Barnsley (17.11%), Sheffield (13.92%) and Other (14.46%).

From the data provided by NHS England 16 GPs serve the Central Locality based in communities throughout. The table below shows the number of patients registered to Central GP surgeries, registered as a smoker.

	<b>Central GPs</b>	<b>No. of patients registered (15+)</b>	<b>No. of patients registered as a smoker</b>	<b>Percentage of smokers</b>
<b>City Centre</b>	Regent Square	8533	1675	19.63%
	The Flying Scotsman	9671	3053	31.57%
	Frances Street Medical	5931	1532	25.83%
<b>Hyde Park</b>	n/a	n/a	n/a	n/a
<b>Clay Lane</b>	n/a	n/a	n/a	n/a
<b>Bennetthorpe</b>	Dr Kirkham's (Burns group)			
<b>Town Moor</b>	Kingthorne Practice	11261	2272	20.18%
	Mount Group	11271	1567	13.9%
	St Vincent's Practice	12263	1817	14.89%
<b>Balby</b>	St Johns Practice	7301	1373	18.81%
	The Scott Practice	12879	2327	18.07%
<b>Intake</b>	The Sandringham Practice/ASA Medical	16707	2794	16.72%
<b>Wheatley Hills</b>	n/a	n/a	n/a	n/a
<b>Lower Wheatley</b>	n/a	n/a	n/a	n/a
<b>Wheatley Park</b>	n/a	n/a	n/a	n/a
<b>Cantley</b>	Cantley Surgery	13152	1717	13.06%
	The Burns Practice			
	The Oakwood	4797	677	14.11%

<b>Belle Vue</b>	n/a	n/a	n/a	n/a
	Bessacarr Medical Mount Group (numbers linked with TM surgery)	Same as above	Same as above	Same as above

The table shows that Hyde Park does not have its own GP surgery, therefore for those registered with a GP would most likely be registered to one in a nearby community.

\*Data provided shows a patient registered, they may not live in the locality of the GP surgery.

## Physical Activity

Mosaic data shows a high percentage of the population in Hexthorpe does not engage in any moderate intensity physical activity. Please see [appendix](#) for more information on mosaic data. This falls in line with Acorn data which shows 42.9% of residents have reported never engaging in moderate to intense physical activity. Therefore, nearly half of the population are leading a sedentary lifestyle. More information on the Acorn profile can be found in the [appendix](#).

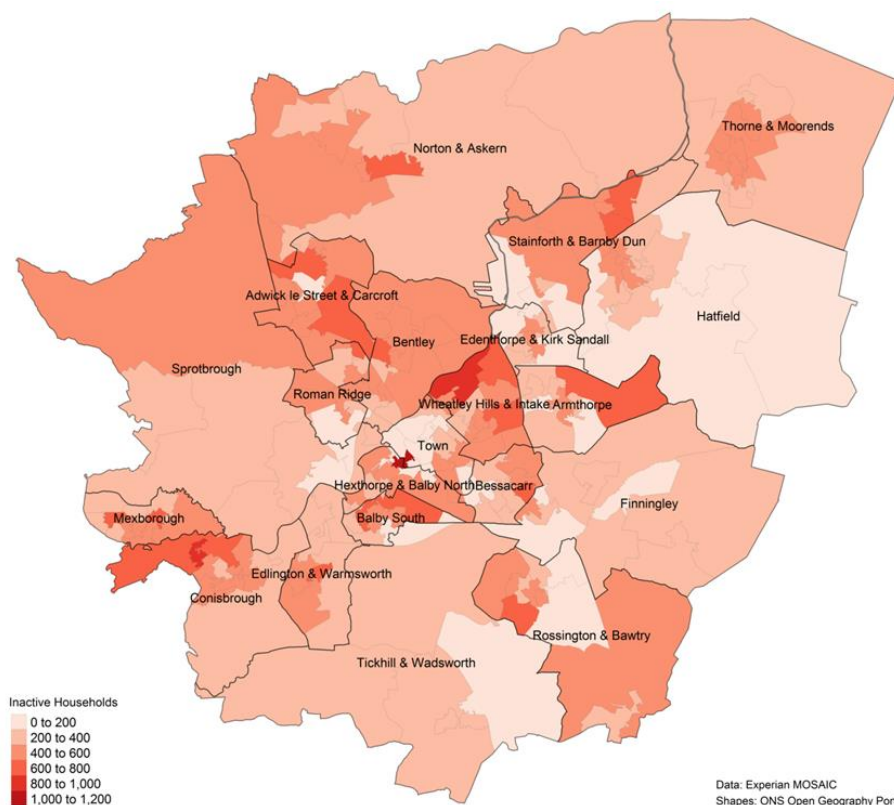


Figure 10. Levels of inactivity within households across Doncaster

Data from the Pupil Lifestyle Survey (2022) reports 35% of children are physically active one or two days a week, whilst 23% reported being active on three or four occasions, a decrease from 28% in 2020 but in line with the rest of the Doncaster. In 2020, 26% of pupils reported being physically active on five or more occasions, in 2022 this rose to 39%, however it is still significantly lower than Doncaster (49%). Getting hot, tired and not being very good at physical activity were the two most popular answers given by pupils when asked why they did not participate in physical activity.

## Green Spaces/Parks

Hexthorpe park provides the main source of green space and is included in the Get Doncaster Moving Future Parks' scheme. Future Parks, vis investment from Sport England, aims to work with residents to co-design development to make parks as accessible as possible. Mapping of a range community-based assets of both people and place has been undertaken for the borough which include, walking leisure centres, walking and cycle routes and school activities. To see an interactive version of these maps please see [appendix](#).

In November 2021 residents were invited to complete a survey about Hexthorpe Park to understand how the community would like to use the space and what development they would like to see. A summary of the key findings is below:



Figure 11. Responses from Hexthorpe Future Parks Survey



## Community Information

### Population size

The population of Hexthorpe is 3,700

### Population and Diversity

The 2021 Census shows that 69.2% of the population in Hexthorpe identify as one or more UK identity and 29.2% identify themselves as having a non-UK identity, this is significantly higher than Doncaster (92.1% and 7% respectively). A significantly higher proportion of the community were born outside the UK (37.6%) compared to the rest of Doncaster (10.4%) were born outside of the UK. 4.7% of the population identify as Asian, Asian British or Asian Welsh, 3.4% Black, Black British, Black Welsh, Caribbean or African and 5% mixed or multiple ethnic groups.

Many new arrivals into Doncaster reside in Hexthorpe with 5.4% residing in the UK less than 2 years compared to 1.2% in Doncaster. Significant differences to Doncaster continue with those who have resided 2 or more year but less than 5 (7.8%) Doncaster (1.8%) and 9.2% have resided 5 years or more but less than 10 years.

The area houses the largest ethnic population from the Eastern European countries many of which identify as part of the Roma traveller community. In terms of nationalities, Slovak, Czech and Romanians are understood to be the dominant ethnic Roma community groups in Hexthorpe. Most of whom arrived in Doncaster during 2014 and 2015 with 947 and 1,640 registering for national insurance numbers, respectively.

2021 Census data shows that 6.9% of the population of Hexthorpe's main language is English or Welsh, significantly lower than Doncaster (92.8%). Hexthorpe has significantly higher proportions of people who cannot speak English well (8.1%) compared to Doncaster (1.4%) and who cannot speak English (0.9%) compared to Doncaster (0.2%).

### Age profile

The age profile of Hexthorpe is slightly younger than the England and Doncaster, owing to a high percentage of families residing in the local area having three or more children. The largest population group is 30-40 years old. It is expected that the number of children in Hexthorpe will remain comparable for the next few years. There are significantly fewer older adults (>65years) living in the area when compared to the Doncaster and England.

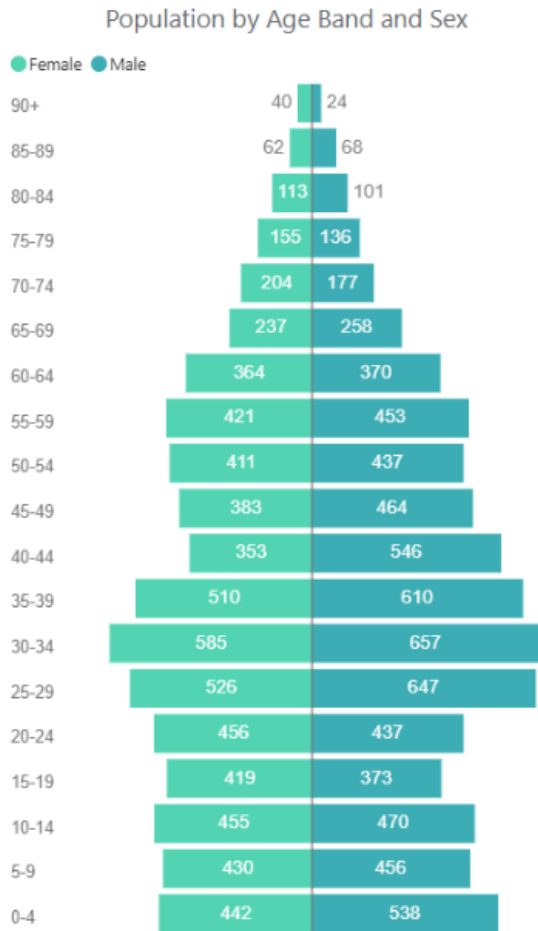


Figure 12. Hexthorpe and Balby Ward

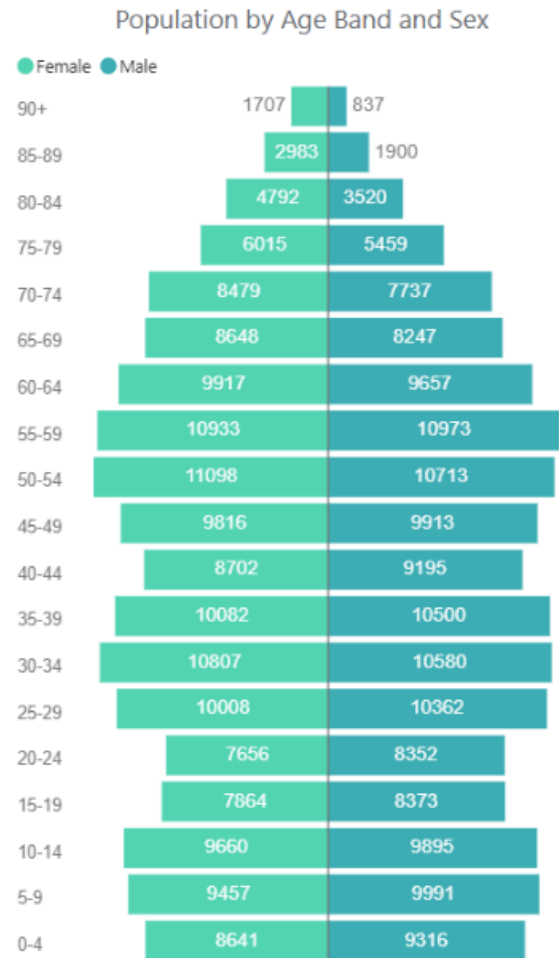


Figure 13. Doncaster

## Housing

The area has a high density of housing, standing at 1,700 households and has seen recent housing developments in Hexthorpe. A new housing development, called Pullman Green, has been granted planning permission to build 671 houses at the old Plant Works and the former Eden Grove Sports Ground.

There are significantly lower numbers of homeowners with a mortgage in Hexthorpe (14.9%) to Doncaster (29.6%). There is a significantly higher proportion of social renters compared to Doncaster (17%) and there are significantly more private renters (38.2%) compared to Doncaster (19.7%). Hexthorpe was the first place in Doncaster to have a selective licensing scheme. The scheme requires landlords to apply for a license indicating that properties rented follow the minimum standards. It requires their tenants to sign documents relating to waste management and anti-social behaviour. This is still running on a two-tier system whereby Home Safe operate the self-managed tier and Doncaster Council run the other tier.

Terrace houses make up a substantial proportion (65%) of the housing stock in Hexthorpe, whilst semi-detached houses make up 21%. Of these houses, 39.8% of the properties have 1

person in the household, significantly more than Doncaster. Conversely there are more households with 4 or more people residing in them (19.4%) compared to Doncaster (17.1%). There are significantly more single-family households (51.7%) compared to Doncaster (64.1%) and 8.5% other household types compared to Doncaster's 4.7%. The number of bedrooms in the housing stock are all significantly different to Doncaster with more than double the percentage of 1-bedroom homes (16.4%, Doncaster 7.2%), 38.7% have 2 bedrooms compared to 23.6% in Doncaster. There are significantly fewer 3-bedroom households (39.6%) compared to Doncaster (53.6%) and 5.3% 4-bedroom households compared to 16% in Doncaster. This make up of housing stock does not match the household make up are larger families often leading to overcrowding.

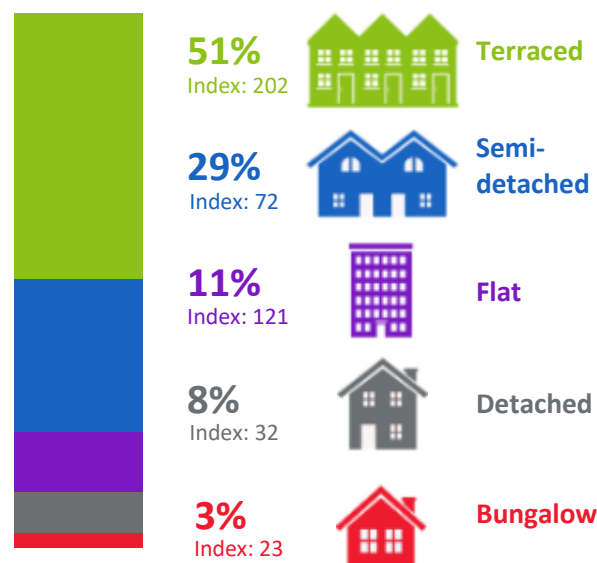


Figure 14. *Property ladder in Hexthorpe*

St Leger Homes is the main provider of Doncaster's of Social Housing. St Leger homes own 287 properties in Hexthorpe and this comprises of 1 bed bungalow (112), 2 bed bungalow (26) 1 bed flat (55), 2 bed flats (1), 2 bed houses (15), 3 bed houses (76), 4 bed houses (1), 5 bed house (1) and homeless family properties (2).

The majority of the social housing renters are aged between 66+ years old and 46-65 years old.

St Leger homes also has a large outstanding amount of rent arrears from those living in the Hexthorpe, 2021/2022 the amount owed is £16,023 and for 2022/2023 the amount is £18,832.

## Stronger Families

### Crime/ASB

Data provided by City of Doncaster Council Community Safety team shows that the number of Anti-Social behaviour, early intervention, hate crimes and low-level crime in the Central locality is the second highest for Doncaster.

Number of early intervention, ASB, hate crime and low level crime issues identified & managed



Figure 15. Stronger Communities ASB data 2023 locality level

Upon further breakdown the data shows that from 1580 incidents/report 409 are recorded as being in Hexthorpe/Balby North ward

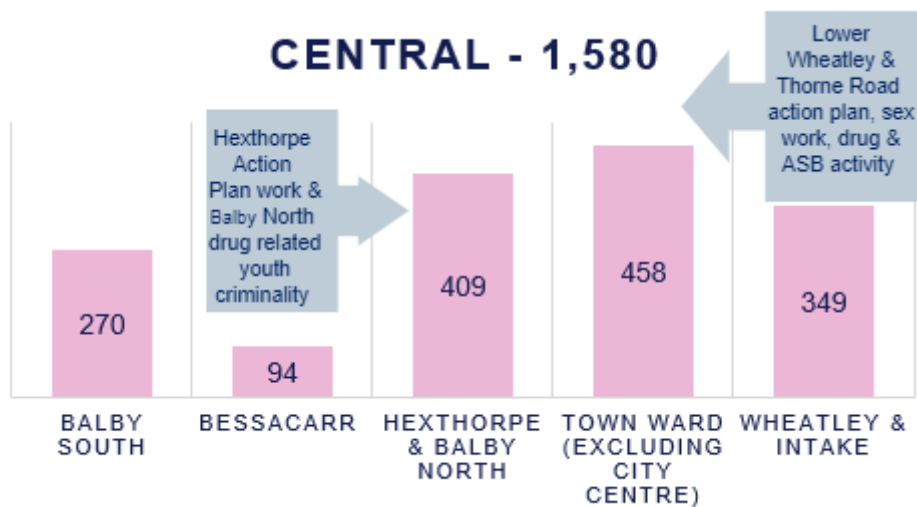


Figure 16. Stronger Communities ASB data 2023 ward breakdown

Through partnership working with South Yorkshire Police data has been provided of ASB incidents reported to the police. The Central Locality currently has the highest ASB reports with 604 recorded.

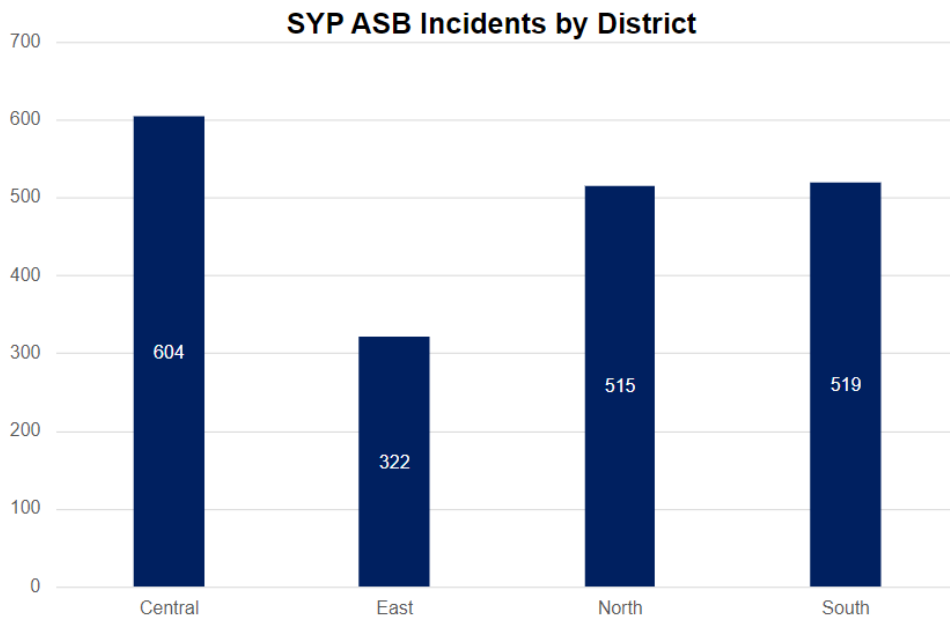


Figure 17. SYP crime reporting in partnership with CDC (City of Doncaster Council)

### Vulnerable Victims

The number of vulnerable victims for each Locality is also recorded from the table below you can see that Central is again the second highest area of Doncaster. East Locality (82) has double that of Central (41) but likewise Central has more than double the North Locality (22).

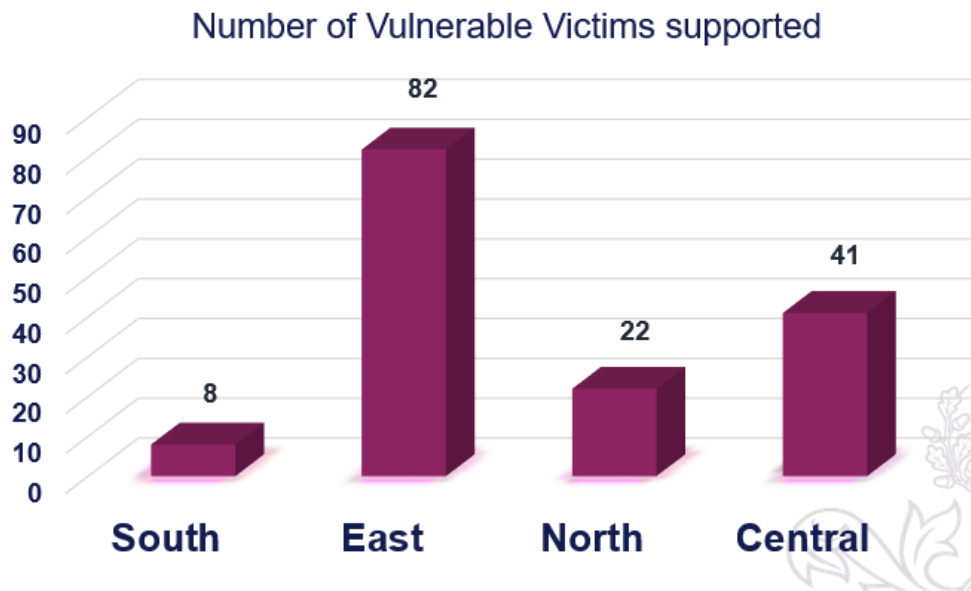


Figure 18. Stronger Communities Vulnerable Victims locality 2023

Of the 41 vulnerable residents recorded in Central Doncaster, 12 of them are based in the Hexthorpe/Balby North ward.

## Wellbeing service

This is one of the services run by CDC Stronger Communities team, the service covers helping residents with financial support, physical health, housing, mental health and social isolation.

Community Ranking for using service	2021-2022	2022-2023	2023-2024
1	Wheatley & Intake	Wheatley & Intake	Wheatley & Intake
2	Rossington & Bawtry	Rossington & Bawtry	Bessacarr & Cantley
3	Thorne & Moorends	Mexborough	Mexborough
4	Adwick & Carcroft	Adwick & Carcroft	Hexthorpe & Balby North and Bentley
5	Town/City Ward	Bessacarr & Cantley	Rossington & Bawtry and Town/City Ward

The table above shows the Central communities who use this service the most.

## Anti-Social Behaviour

Waste management and fly tipping are ongoing challenges in Hexthorpe and there is much, long standing work underway by a partnership of stakeholders with the community. There is a Public Spaces Protection Orders (PSPO) in place in Hexthorpe. PSPOs (Public Spaces Protection Orders) are one of the tools available under the 2014 Act that give flexible powers for local authorities to prohibit specified activities and/or require certain things to be done by people engaged in particular activities, within a defined public area. Hexthorpe's PSPO has been renewed for another three years.

The partnership approaches to supporting the community and address anti-social behaviours (ASB) is driven by the Hexthorpe Strategic Group which hosts a range of stakeholders utilising a range of approaches including prevention education and enforcement. Regular 'Days of Action' take place in the community where stakeholders are invited to come together work collaboratively in the community. The most recent took place in March 2023 and saw a total of 8 hours spent in the community, below are some examples of the work that took place regarding waste and recycling:

### **Abbott Street, Hexthorpe**

Letters sent to 6 premises with regards to leaving bins out before / after collection times allowed.

5 orphaned / contaminated bins removed.

### **Spansyke Street, Hexthorpe**

Letters sent to 4 premises with regards to leaving bins out before / after collection times allowed.

6 orphaned / contaminated bins removed.

### **Ellerker Avenue, Hexthorpe**

Published January 2024

Letters sent to 2 premises with regards to leaving bins out before / after collection times allowed.

7 orphaned / contaminated bins removed.

Domestic 240 litre bin inked 42 on side also brought out 10 splitting bags (Photos taken and passed to Enforcement Officer for the Area).

### **Stone Close Avenue, Hexthorpe**

Letters sent to 6 premises with regards to leaving bins out before / after collection times allowed.

1 orphaned / contaminated bin removed.

## Community Insight

### Appreciative Inquiry

The Well Doncaster Team undertake Appreciative Inquiry (AI) within communities to gather insight to support co-designing action plans with the community. Armstrong (2020) suggests in his work 'A changing world, again. How Appreciative Inquiry can guide our growth' that reframing the questions considering a crisis like Covid-19 and drawing on strengths and assets from past positive experience will help participants as they restructure their community. The AI questions are structured to pull on the successes of the past and present, to seek new potentials and possibilities and to build on those through the Dream and Design stages.

. The Appreciative Inquiry will include the following steps:

1. **Discovery Phase** – This will involve engagement with the residents of Hexthorpe to find out what is working well in the community. Responses will be themed to allow priorities of the community to be established.
2. **Dream** – Residents and key stakeholders will be invited to attend an initial workshop to discuss what ideas they have for their community and how these will meet the priorities highlighted in the discovery phase.
3. **Design** – All attendees are invited back for a second workshop to develop an action plan to direct work for the community.
4. **Destiny** – A collaborative way of working and investing resources to meet the actions from the previous phase.

Community insight gathering has been ongoing in Hexthorpe since 2019. All responses have undergone a thematic analysis and three themes emerged as key assets and strengths of the community and are being developed through workshops and supporting the established Hexthorpe Positive Activity Group, a resident lead groups of stakeholders developing community activity and events.

Theme:

- Green Space
- Local Activities and Support
- Community Spirit/ Pride

## Green Space

Hexthorpe Park is the main green space in Hexthorpe and is a central place for people to visit Hexthorpe for. Toilet facilities, increasing lighting, water feature, picnic area, opening up of the park for safety, re-development of the bowling club and car parking facilities have been highlighted through community workshops as wanted developments. The park has recently been the venue for community events such as the 2022 Jubilee celebrations. Further development is linked to the Future Parks investment plans which the Appreciative Inquiry insight is feeding into.

## Local Activities and Support:

Communication of activities and support on offer to residents is an ongoing challenge and opportunity in Hexthorpe to engage as many members as possible of the community, in the right way to them. Written forms of communication in key languages were suggested as the best method to engage families, due to the high percentage of non-English speaking residents. This was actioned through the 2022-23 winter period when posters for local warm and welcome spaces were translated into key languages and displayed in the windows of local businesses.

## Community Spirit and Pride:

Residents discussed the types of activities they would like to see in Hexthorpe. Community events and multi-cultural opportunities including food festivals and musical festivals were successful in supporting residents break down barriers between cultures before the Covid-19 pandemic. A team of residents and stakeholder support the 10 Flags Food event in April 2022 celebrating the diversity of the community. Work in ongoing to create further events such as a Coronation Day event at Hexthorpe Park and an arts festival linking with Doncapolitan.

## Community Investment

Over the last 3 years there has been £2.42 million of investment into the Central Locality from Public Health and partnerships. This investment has been successfully applied for by partners and VCFS (Voluntary Community and Faith Sector) groups. The top 3 areas of funding spend has gone to support Youth Activities (£348,604), Community Engagement employment (£287,915) and Mental Health (£234,312).

The top 3 areas of spending in Hexthorpe are: Community Engagement Worker (£94,560), Health & Wellbeing for adults (£144,072) and Physical Activity (£27,400)



## Doncaster Talks

In 2019, Doncaster Talks undertook insight across the borough of Doncaster. Responses were separated into wards and thematically analysed.

Across Hexthorpe and Balby North, 144 responses were recorded and the main themes on what people liked about the area, what could be improved, and what Doncaster should focus on in the future are displayed in the table below.

HEXTHORPE & BALBY
<p><b>Like</b></p> <ul style="list-style-type: none"><li>• Good access to town centre</li><li>• Good areas of greenspace</li><li>• Good community spirit</li><li>• Lots of local amenities and groups</li></ul> <p><b>Improve</b></p> <ul style="list-style-type: none"><li>• Cleaner streets and less fly-tipping</li><li>• ASB in the local area</li><li>• Local community services and more stuff for people to do</li></ul> <p><b>Focus</b></p> <ul style="list-style-type: none"><li>• More activities to bring people together on leisure and culture</li><li>• Cleaner streets and less fly-tipping</li><li>• Better job opportunities</li><li>• Invest in the town centre – too many empty shops</li></ul>



## Locality Plan

Locality plans look at how we can together to strengthen communities and improve the lives and opportunities for residents living there.

The Central Locality Plan has been developed in conjunction with residents and sets out what will be done to improve the community over the next 12 months. Communities were engaged with through a number of different ways:

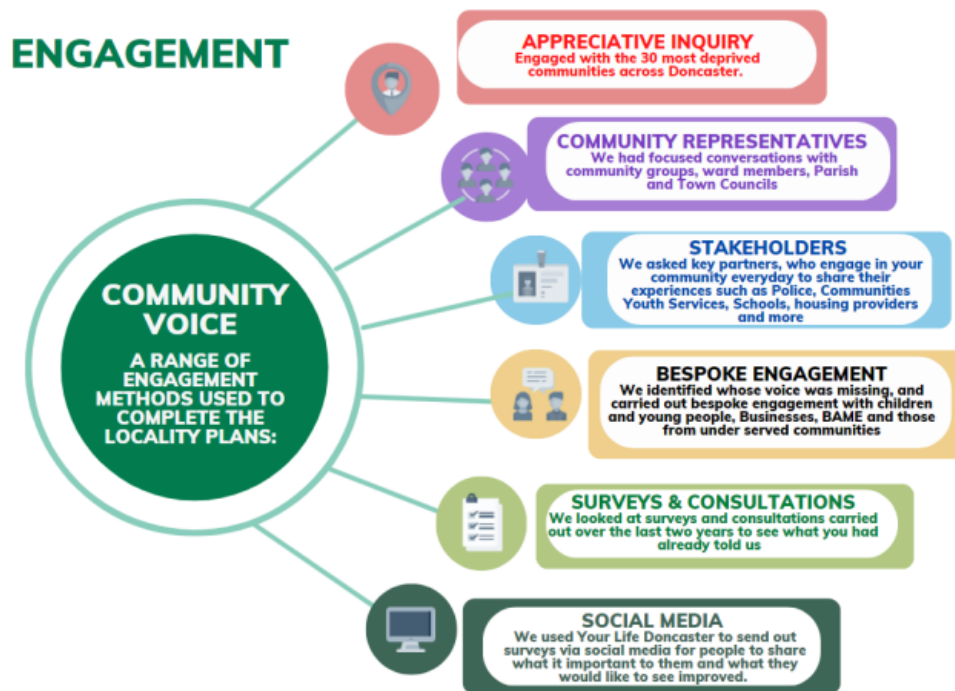


Figure 19. *Community Voice engagement methods*

The 2023-24 Locality Plan for the Central Communities outlines a set of priorities and can be viewed using the following link: [Central Locality Plans - YourLifeDoncaster](#)

## References

Armstrong, A.J., Holmes, C.M. and Henning, D., 2020. A changing world, again. How Appreciative Inquiry can guide our growth. *Social Sciences & Humanities Open*, 2(1), p.100038.



## Appendix

### Well Doncaster Annual reports

Well Doncaster Approach: <https://youtu.be/e1RKOZoGI10>

More information about how Well Doncaster has been meeting outcomes and objectives can be found in past and present annual report:

<https://welldoncaster.wordpress.com>

### Census data 2021

The census is undertaken by the Office for National Statistics every 10 years and gives us a picture of all the people and households in England and Wales.

[Build a custom area profile - Census 2021, ONS](#)

[Census Maps - Census 2021 data interactive, ONS](#)

### Public Health Data

#### **Fingertips**

This is a new fingertips profile that uses data from Local Health an existing PHE data tool. Local Health is a collection of quality assured health information presented for small geographical areas. By presenting data for small areas, Local Health provides evidence of inequalities within local areas. It supports targeted interventions to reduce such inequalities.

Local Health contains indicators related to:

- Population and demographic factors
- Wider determinants of health
- Health outcomes

It presents data for middle super output areas (MSOA), electoral wards, clinical commissioning groups (CCG), local authorities, and England as a whole.

Please note, as the Local Health tool was designed to allow users to map small area data, a mapping option has not been provided in this profile.

<https://fingertips.phe.org.uk/profile/local-health/data#page/0>

[Local Health - Public Health England - Reports: get a dashboard on a custom area](#)

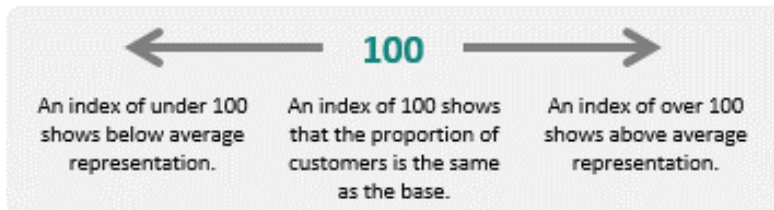
### Acorn profiles

Wellbeing Acorn segments the population into 4 groups (Health Challenges; At Risk; Caution; Healthy) and 25 types describing the health and wellbeing attributes of each postcode across the country. By analysing significant social and health related behaviour, it provides precise information and an in depth understanding of upstream issues affected by current lifestyle traits

## INTERPRETING THE REPORT

The Wellbeing Acorn profile report helps you understand the underlying demographics, lifestyle and health attributes of your customers and service users by comparing their Wellbeing Acorn profile to a base (e.g. UK population, area or other customer groups).

### INDEX



The Wellbeing Acorn Profile contains 12 variables that are indicators of Disability or Infirmity in the population and 9 variables related to unhealthy Behaviours. The average score measured against the base profile of Yorkshire and the Humber is 100. A value above 100 indicates that the area population is overrepresented for this characteristic, below 100 the value is less than the average or under represented.

### Get Doncaster Moving survey

<https://getdoncastermoving.org/uploads/dmbc-phase-1-summary-report-final.pdf?v=1558622409>

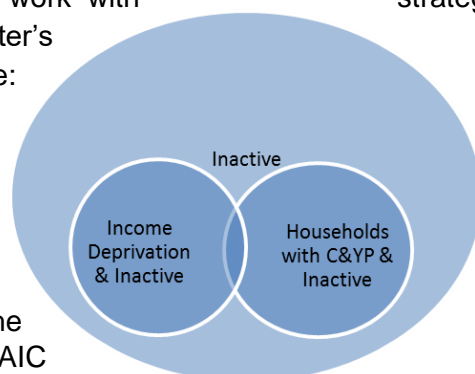
### Mosaic data

Mosaic Public Sector classifies the UK population into one of 66 types and 15 groups through a detailed and accurate understanding of each citizen's demographics, lifestyles, behaviours and location.

### The Physically Inactive Population of Doncaster

The MOSAIC types who "Do not exercise" and "Do not take part in Sport" were searched and three priority groups have been identified through work with strategic partners as part of the development of Doncaster's Physical Activity Strategy. The three priority groups are:

- The Inactive
- Families with children and young people
- People living in income deprivation



These groups are cross-referenced against the inactivity list allowing for the identification of MOSAIC

types which are both likely to be inactive and living in deprivation as well as inactive and from households with children and young people.

Link to the Get Doncaster Moving strategy; [Let's Get Moving! | Get Doncaster Moving](#)

### **Pupil Lifestyle Survey 2022**

[Pupil Lifestyle Survey - Healthy Schools \(healthylearningdoncaster.co.uk\)](#)

### **Power BI – Joint Strategic Needs Assessment**

The Joint Strategic Needs Assessment (JSNA) is a process that identifies the current and future health and wellbeing needs of a local population. The dashboards show information about the employment, health, and wellbeing of people in Doncaster. We use this information to inform our policies and strategies to improve the lives of everyone in the Doncaster area.

[Joint Strategic Needs Assessments - Team Doncaster](#)