

Wheatley Park Community Profile Well Doncaster



Well Doncaster

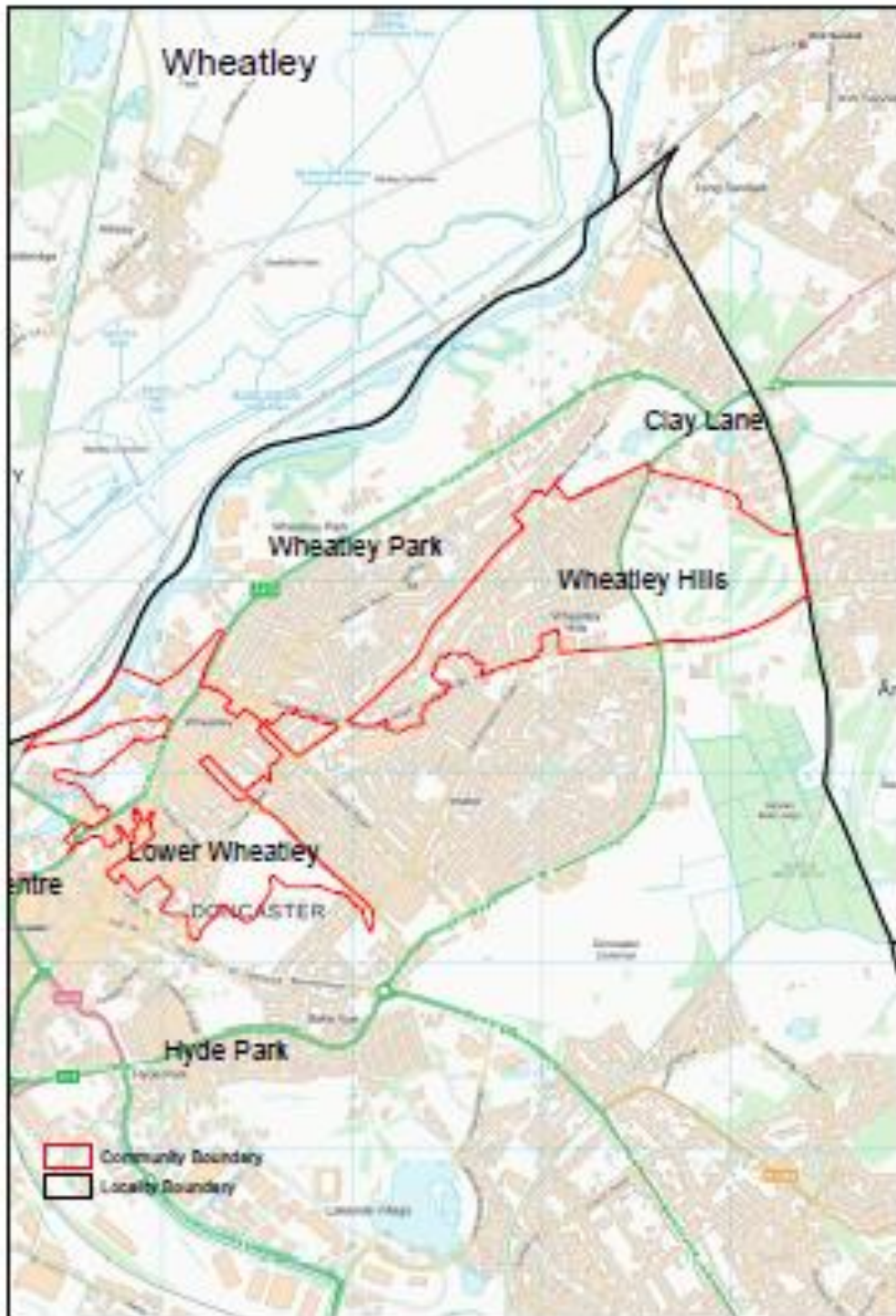
Community Led Health and Wealth
Empowering people in Doncaster to live better, healthier, and happier lives.

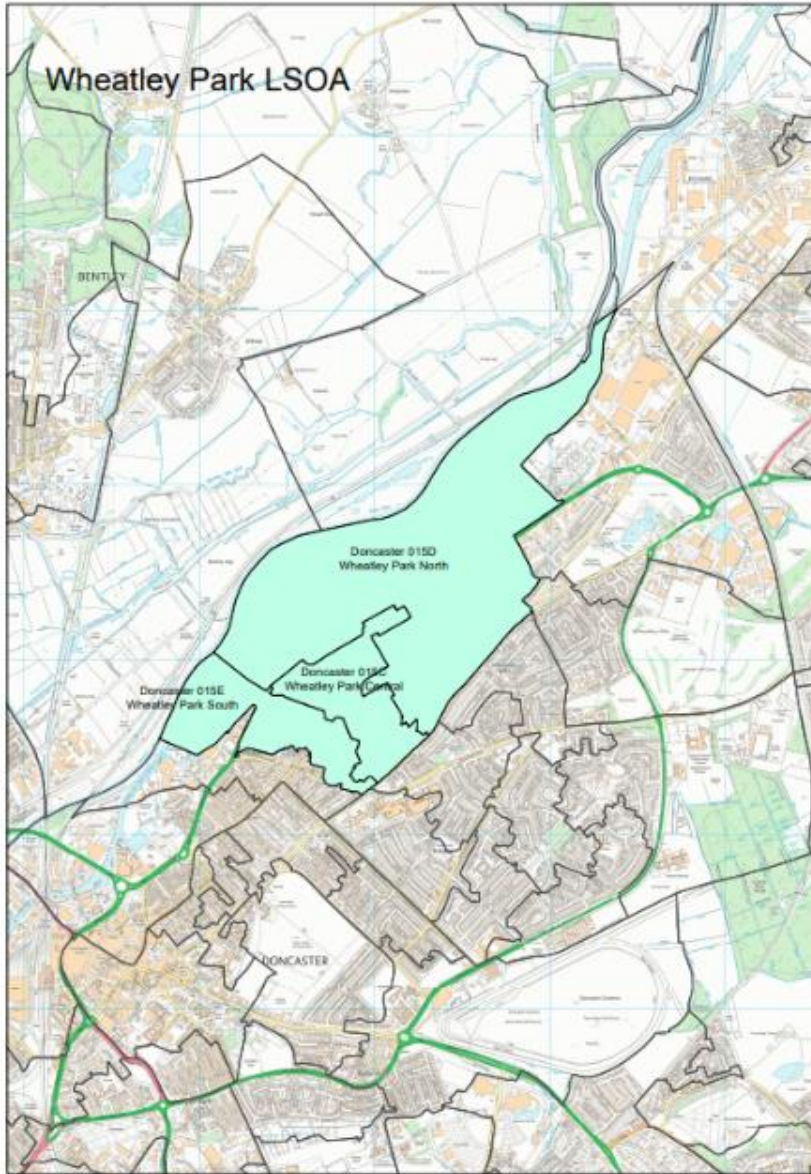
www.welldoncaster.uk

Well Doncaster
**Community
Wealth Builder**

Well Doncaster
Be Well

 **City of
Doncaster
Council**





Well Doncaster

This Report

This report focuses on the community of Wheatley Park in the Central locality of the city. The report begins with a one-page summary outlining key information and priorities. This document shows the initial conversations with communities, including ward members, community organisations, faith groups, residents and other organisations who work in the area. Communities' knowledge of their own areas enables them to identify their strengths and the assets on which they can build on. This document is shared with the intention of supporting those conversations and sharing information that might not be readily available to local people.

Wheatley Park is situated within the Intake and Wheatley electoral ward and comprises 3 Lower Super Output Areas (LSOAs); Wheatley Park North, Wheatley Park Central, and Wheatley Park South, as shown in the map below. Data in this profile comprises of data at LSOA, community, or Ward level (covering the Intake & Wheatley ward) where available.

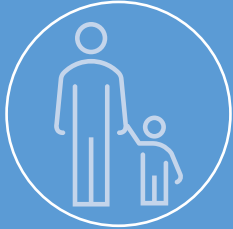
Contents

This Report.....	4
One Page Summary	8
Key Health Priorities	9
Assets	10
Asset Maps	10
Assets in the Community	14
Ward Members.....	16
Health and Wealth.....	17
Deprivation	17
Wealth Inequalities	19
Fuel Poverty	20
Food Poverty.....	21
Employment	21
Citizens Advice Doncaster Borough	24
Child Development	25
Family Hubs	26
School Attainment.....	26
Pupil Lifestyle Survey	26
Health Inequalities.....	28
Long Term Health Conditions	28
Alcohol Consumption.....	29
Smoking.....	29
Cause of Death.....	30
Life Expectancy	30
Physical Activity	32
Active Travel	33
Parks and Green Spaces.....	33
Population Health Management	34
Community Information	34
Population	34
Demographics (Ethnicity, Language, and Religion)	35
Housing.....	37
Stronger Families	38
Antisocial Behaviour	39
Vulnerable Victims.....	39

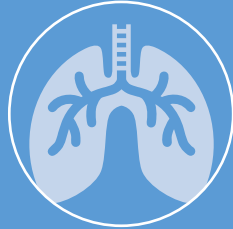
Community Insight	41
Appreciative Inquiry	41
Doncaster Talks	42
Locality Plan	43
Community Investment	43
Appendix	44



Wheatley Park



1 in 4 children living in child poverty



High incidence of lung cancer and COPD



Circulatory diseases are the leading cause of death



One quarter of households contain 4 or more people



33% of population not in employment and never worked



24.6% of population born outside UK



One Page Summary

Wheatley Park is part of the Wheatley Hill & Intake ward which consists of 4 communities: Wheatley Park, Wheatley Hills, Clay Lane, and Intake. It is in the Central locality and has a population of approximately 6,400 (Census 2021).

The Index of Multiple Deprivation score in Wheatley Park is 36.15, this indicates that it is ranked the 21st most deprived community in Doncaster (out of 88). Within the 4 communities in the Wheatley Hills & Intake ward, Wheatley Park is the 3rd most deprived area.

Wheatley Park has a higher proportion of children and young people aged 0-14 years and adults aged 25–44 years, with a lower-than-average number of adults aged 50 years and above, and 15–24-year-olds compared to Doncaster. Approximately one quarter of households (23.7%) contain 4 or more people, higher than the Doncaster rate (17.1%). This fits in line with the demographic of having a large proportion of children and young people in the community.

In the Wheatley Hills & Intake ward, over 1 in 4 children are classed as living in child poverty (26.6%), this is higher than Doncaster (22.7%), and significantly higher than England (17.1%). 26.1% of children in Wheatley Hills & Intake are classified as overweight (including obese) in reception. This further increases to 39.2% in Year 6.

The leading cause of death in the Wheatley Hills & Intake ward is deaths from circulatory diseases. Deaths from coronary heart disease, and preventable deaths, this assumes that the underlying cause of death could potentially be avoided by public health and primary prevention interventions (that is, before the onset of diseases or injuries, to reduce incidence) is also significantly high.

Incidence of lung cancer at ward level is significantly high and ranks amongst the highest rates across the city. Emergency hospital admissions for chronic obstructive pulmonary disease (COPD) is also high compared to England. Coupled with high smoking rates in the Central locality. Emergency hospital admissions for myocardial infarction (heart attack) is also high compared to Doncaster and England.

There is a higher incidence of alcohol specific admissions in some areas in Wheatley Park compared to the Doncaster average of 43.67 per 1000. At LSOA level, Wheatley Park Central (52.60) and Wheatley Park North (55.31) both have a higher incidence rate compared to Doncaster.

84.2% of the population in Wheatley Park are White, lower than the Doncaster rate of 93.1%. 6.8% of the population are Asian, Asian British, or Asian Welsh, higher than the Doncaster rate of 2.9%, and 6.2% of the population are mixed or multiple ethnic groups, or of other ethnic groups. There is a higher prevalence of individuals of Muslim religion in Wheatley Park (7.8%) compared to Doncaster (2.2%).

Approximately one quarter of the population in Wheatley Park were born outside of the UK (24.6%), higher than the Doncaster rate of 10.4%. 17.4% of the population identify as non-UK, compared to 7.0% in Doncaster. Furthermore, 1 in 5 residents are non-UK passport holders (19.2%), with a further 19.5% having no passport.

Census data (2021) shows a high number of residents that are not in employment: never worked in Wheatley Park (33.0%) compared to Doncaster (27.2%). 13.3% of residents are not in employment: not worked in the last 12 months, again higher than the Doncaster rate (11.2%). Those that are in employment in Wheatley Park are more likely to be in elementary or lower skilled roles, and less likely to be in managerial or professional professions.

Key Health Priorities

- Circulatory diseases are the leading cause of death.
- Significantly high prevalence of lung cancer, high emergency hospital admissions for COPD and high smoking rates.
- High incidence of alcohol specific admissions compared to Doncaster.
- High rates of child poverty and high prevalence of overweight children (including obese).



Assets

Well Doncaster use a community centred approach which allows investment in supporting, working with, and empowering communities to facilitate a healthy community. The voice and role of our communities and taking a strength/assets-based approach to work with individuals, families and communities is crucial to the achievement of our overall vision. It is recognised that work is needed in the community to expand the understanding of who, how and what is accessed in the area. Greater knowledge of the identity of each community/ward will allow a more appropriate and effective response to community needs.

Asset Maps

The maps below show the different type of assets found across Wheatley Park. These have been separated into Business, Community, and Health assets. It should be noted that these maps are a starting point in understanding the community and that further work is needed amongst the community to understand all the assets and how they are used. These maps will be updated to highlight any changes.

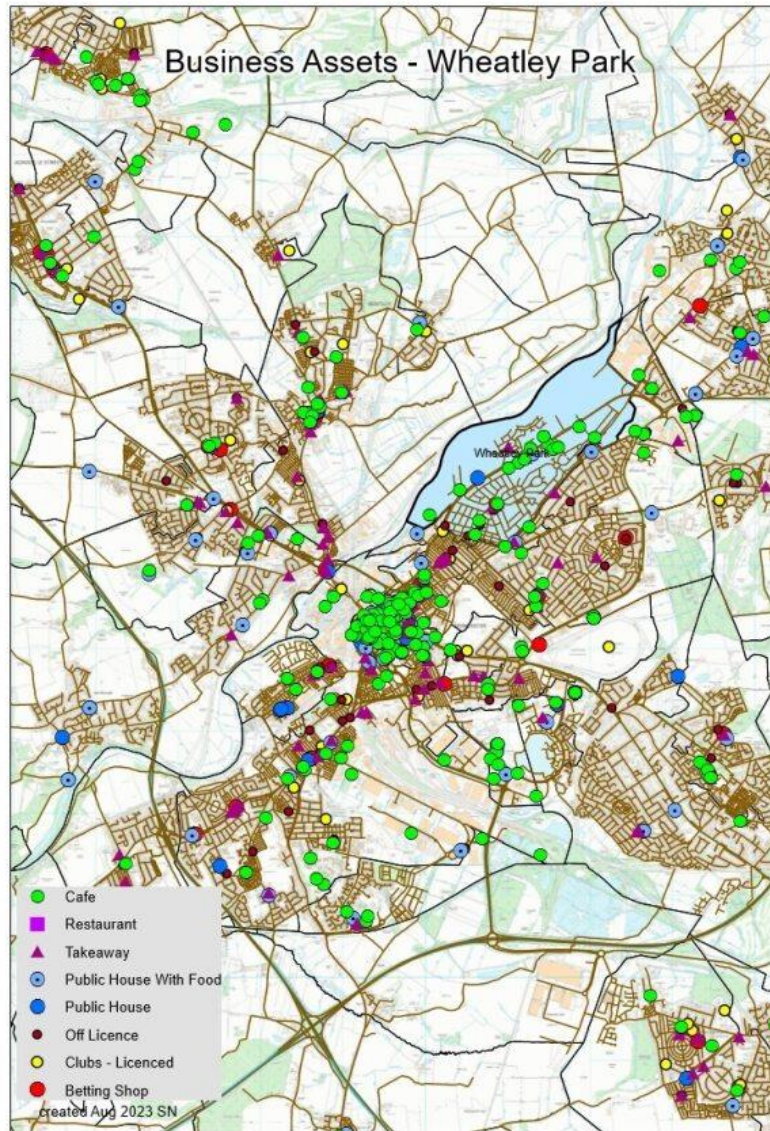


Figure 1. Business Assets in Wheatley Park

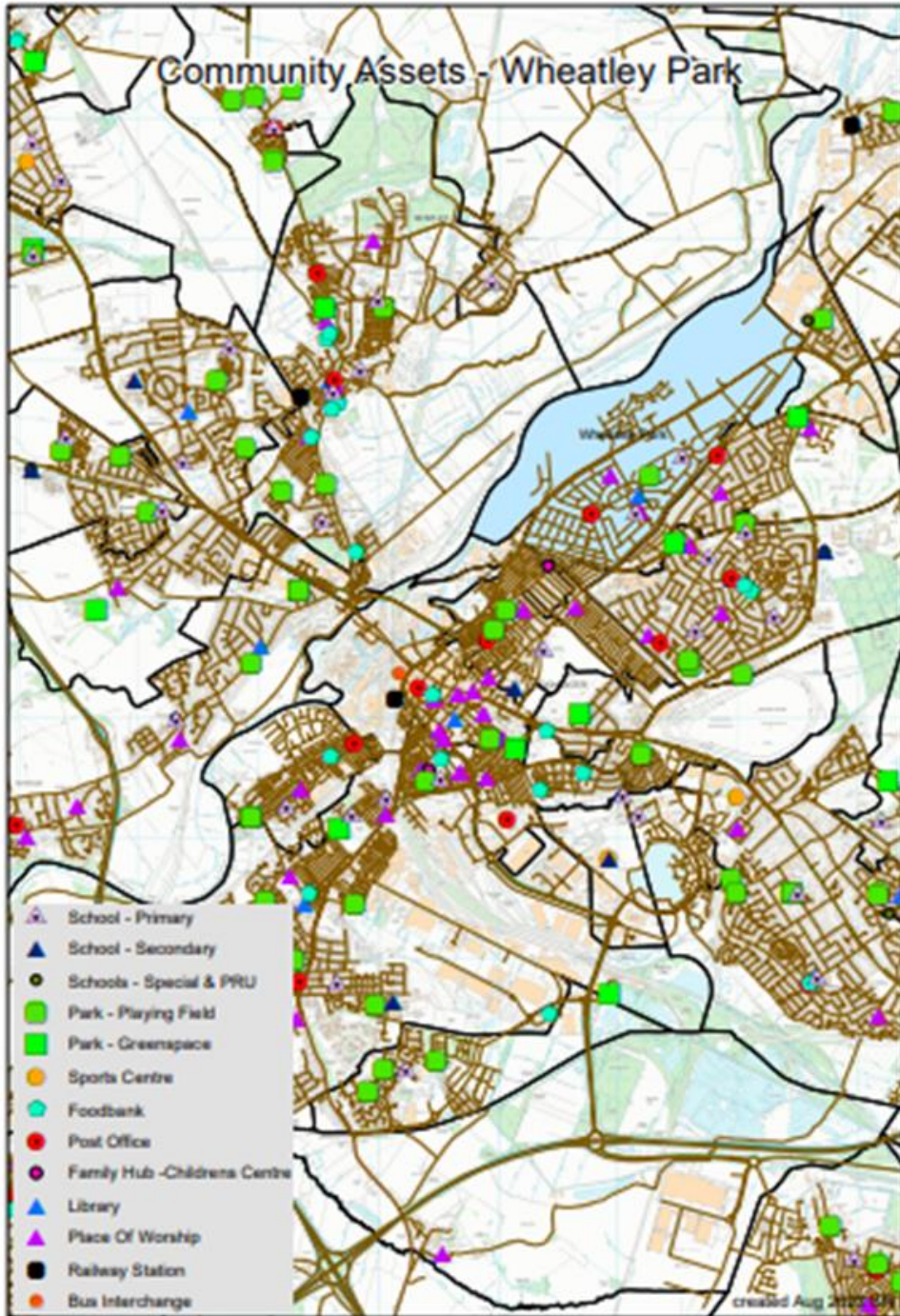


Figure 2. Community Assets in Wheatley Park

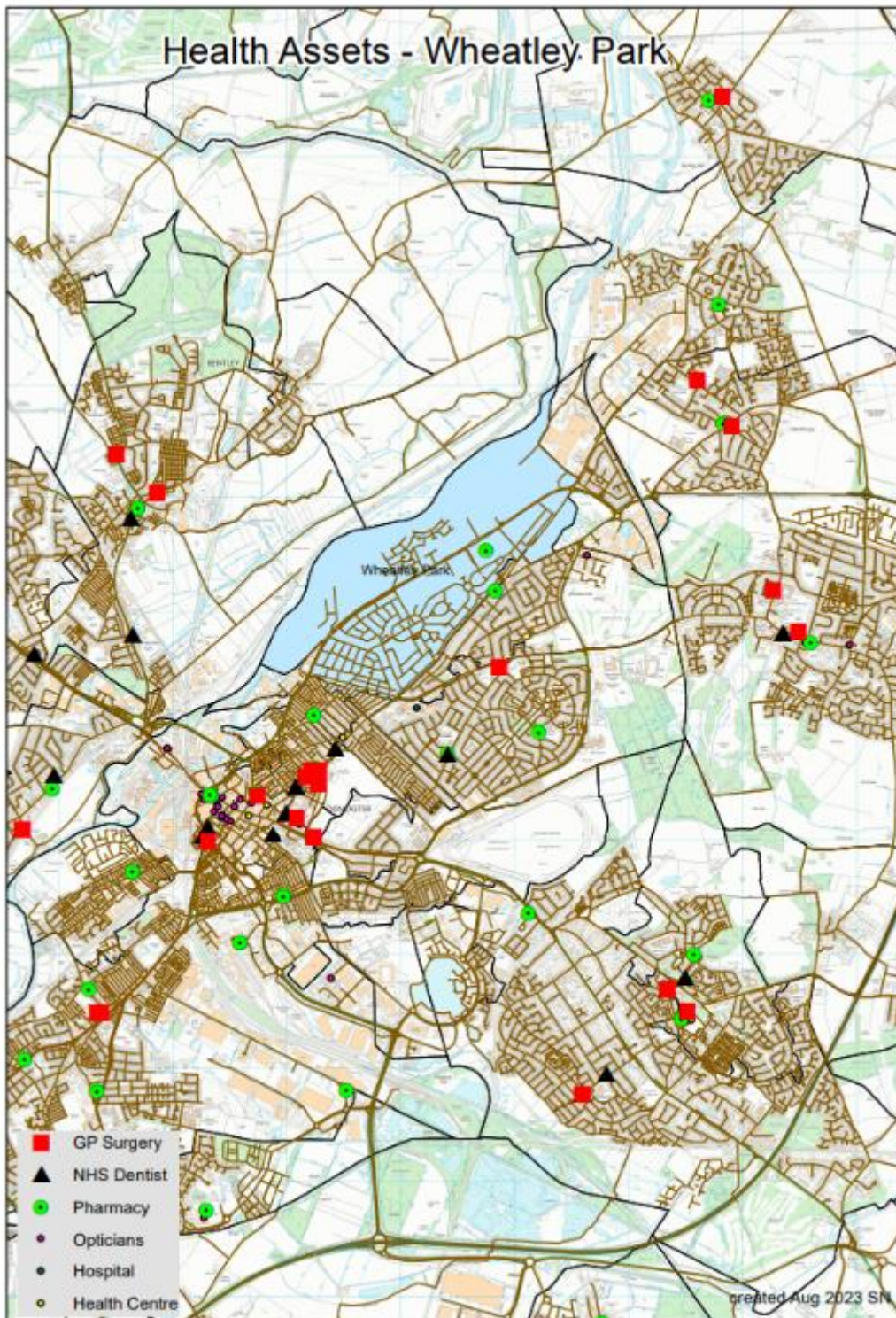
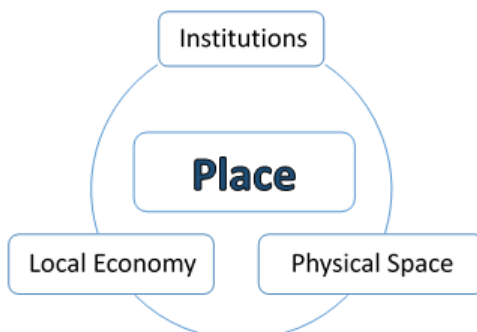


Figure 3. Health Assets in Wheatley Park

Assets in the Community

As part of a population health management approach, the following assets have been identified and themed around people and places:



Institutions (Schools/Colleges etc.)	Physical space (Parks, Carparks etc.)	Local Economy (Local Profit Businesses)
<p><u>Education</u></p> <ul style="list-style-type: none"> Kingfisher Primary School Park Primary School <p><u>GPs</u></p> <ul style="list-style-type: none"> Kingthorne General Practitioners Group The Mount Group Doncaster GP Out of hours <p><u>Family Hub</u></p> <ul style="list-style-type: none"> Wheatley Family Hub 	<p><u>Buildings</u></p> <ul style="list-style-type: none"> Wheatley Park Community Library St Pauls Community Church Community Action Network Gym <p><u>Green Space</u></p> <ul style="list-style-type: none"> Parkway South Green Sandall Park <p><u>Parks & Playgrounds</u></p> <ul style="list-style-type: none"> Parkway South Playground and Park 	<p><u>Shops/ Supermarkets</u></p> <ul style="list-style-type: none"> Heron Food Stars Supermarket Aldi Tesco Express Post Office One Stop Wade Laundrettes Wheatley Hall Shopping Park Barnardo's Kwik Fit Dulux Decorator Centre Wilson's carpets Dunelm



Individuals (Key Individuals Identified within Wheatley Park)	Associations (Local Community Groups)
<ul style="list-style-type: none"> • Ward Members <p>Community Leaders:</p> <ul style="list-style-type: none"> • Volunteers in VCFS Sector <p>Professionals:</p> <ul style="list-style-type: none"> • Well Doncaster Officer • Be Well Officer • CDC Communities Team • Police Community Support Officer • St Leger Homes 	<p><u>Community Groups and TARA's</u></p> <ul style="list-style-type: none"> • Wheatley Park Community Action Network (CAN) <p><u>Voluntary & Faith</u></p> <ul style="list-style-type: none"> • St Paul's Community Church • Wheatley Park Baptist Church • Doncaster Evangelical Church <p><u>Foodbanks & Support</u></p> <ul style="list-style-type: none"> • Doncaster Foodbank (Every Tuesday, St Pauls Community Church, 10am-2pm) • Citizen Advice Bureau (as above) <p><u>Sports clubs:</u></p> <ul style="list-style-type: none"> • Doncaster Martial Arts Centre • Danum ABC • Parklands Sports & Social Club • Wheatley Golf Club • Doncaster Boxing Academy • Wheatley Hills RUFC <p><u>Children and Young People</u></p> <ul style="list-style-type: none"> • J & D Activities

Ward Members

Below are the Ward Members for Wheatley Park.



Councillor Yetunde Elebuibon
Wheatley Hills and Intake
Labour



Councillor Jane Kidd

Wheatley Hills and Intake
Labour and Co-operative Party



Councillor Emma Muddiman-Rawlins

Wheatley Hills and Intake
Labour and Co-operative Party

Contact details for the Ward Councillors are as follows:

Yetunde.Elebuibon@doncaster.gov.uk

jane.kidd@doncaster.gov.uk

Emma.Muddiman-Rawlins@doncaster.gov.uk



Health and Wealth

Health inequalities are avoidable differences across the population and between different groups within society. Health inequalities arise from the conditions in which we live, work, and play. These conditions influence our opportunities for good health, how we think, feel, and act, therefore shaping our health and wellbeing.

Deprivation

Evidence shows that people living in our most deprived areas face the greatest health inequalities in relation to health access, experiences, and outcomes. Deprivation covers a range of issues and refers to unmet needs caused by a lack of resources, including but not limited to finances, housing, and education. It is measured in different ways including the Indices of Multiple Deprivation (IMD). Doncaster is within the 10% most deprived communities in England.

The overall deprivation map from 2019 below shows deprivation across the city by Lower Super Output Areas (LSOAs). Areas in red are those in the top IMD decile, which means that they have been identified as being most deprived. Wheatley Park has been identified on the map.

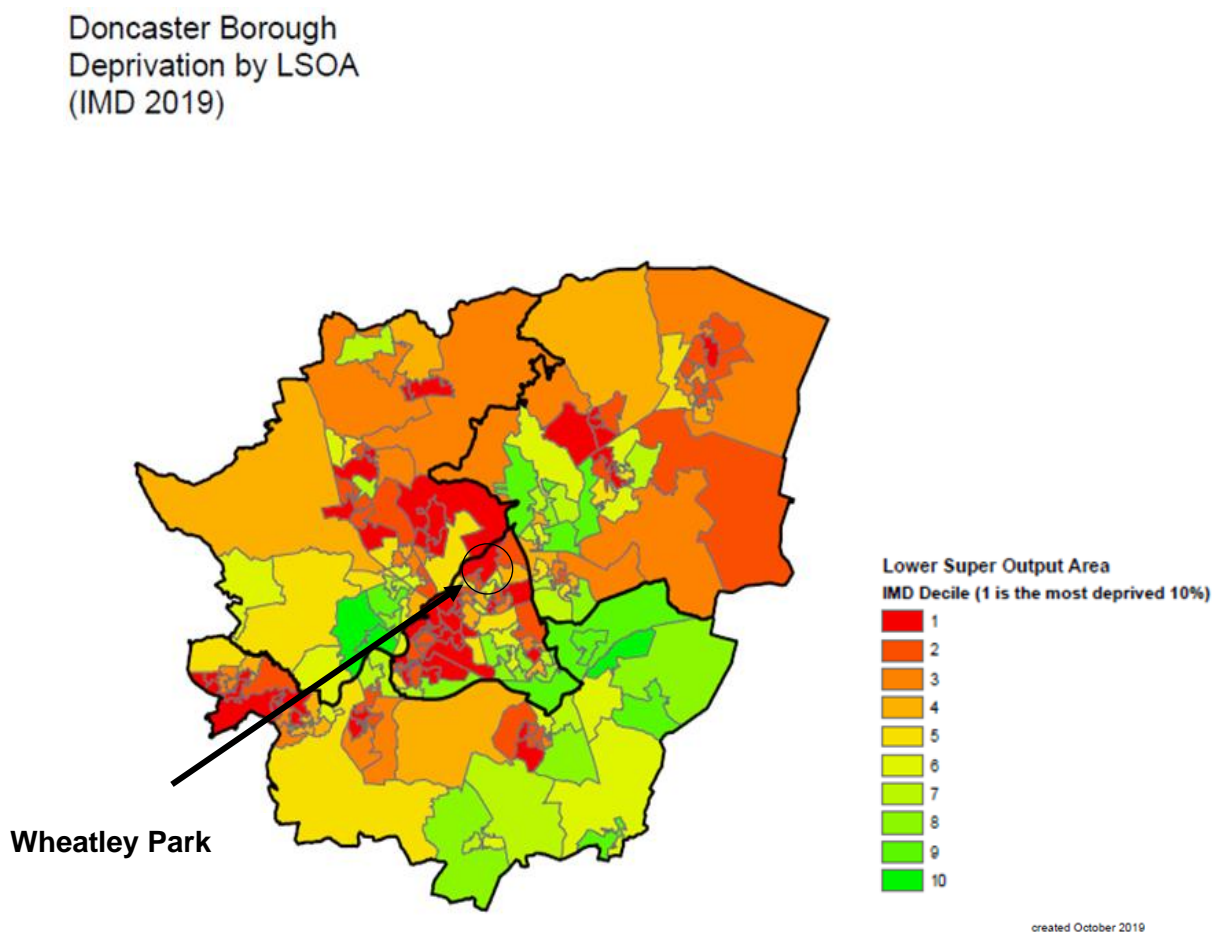


Figure 4. Doncaster city deprivation by LSOA, 2019

The 2021 Census data has been used to produce estimates that classify households in England and Wales by four dimensions of deprivation; Education, Employment, Health and Housing. This information is then broken down into household deprivation within Wheatley Park compared to Doncaster. As demonstrated in the infographic to the right, Wheatley Park has a higher rate of households that are deprived in one or three dimensions. With a lower prevalence of households that are not deprived. The map below shows household deprivation in one dimension, the darker colour represents higher prevalence of deprivation.

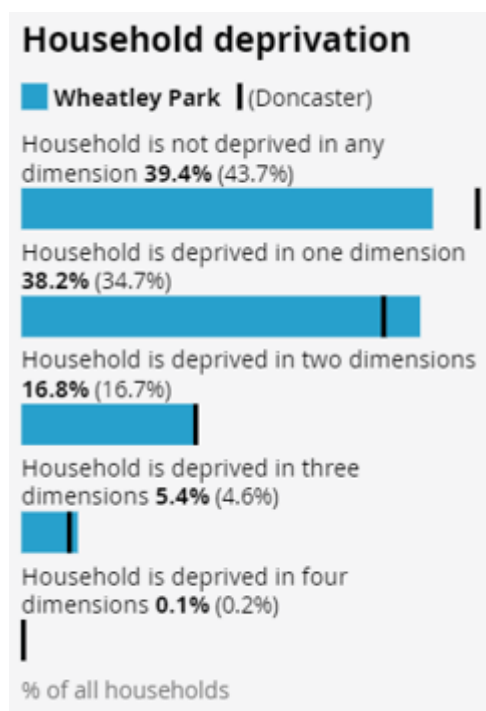


Figure 5. Household deprivation in Wheatley Park (Census 2021)

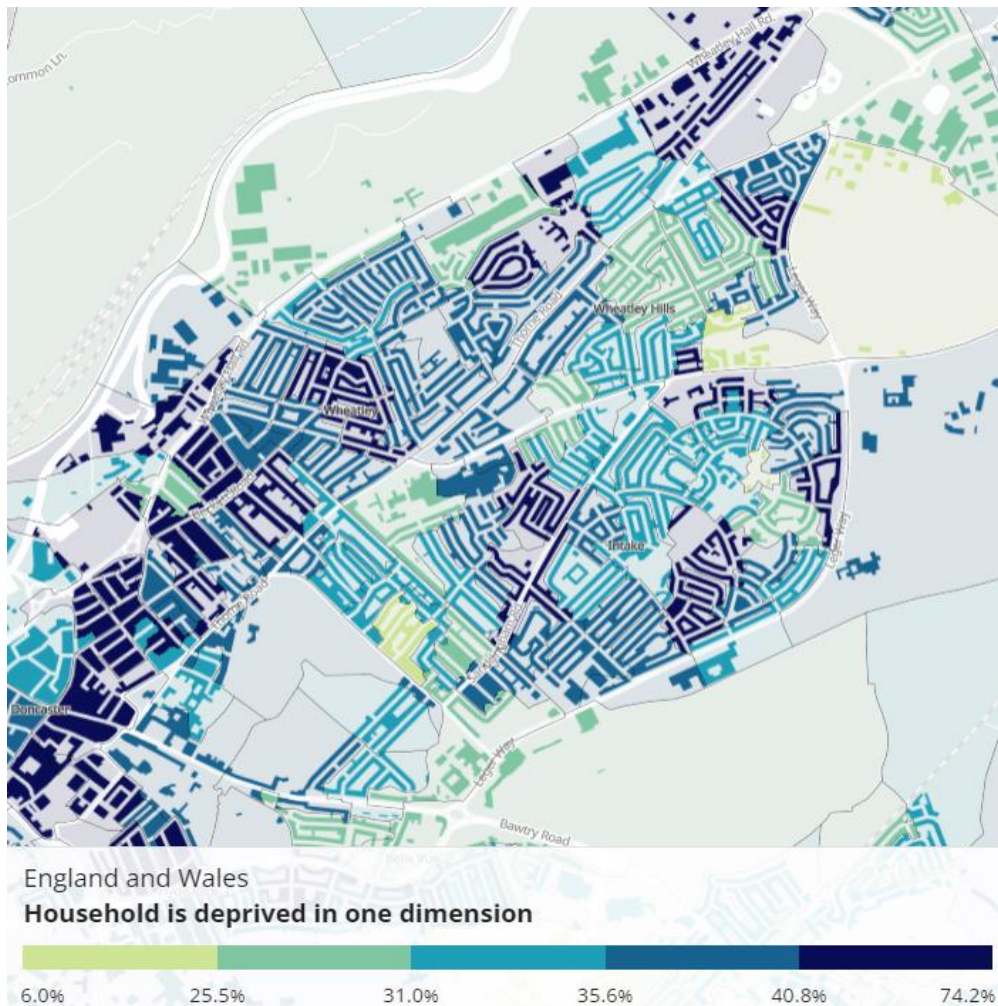


Figure 6. Census data 'Household deprivation in one dimension'

Wealth Inequalities

The Index of Multiple Deprivation score in Wheatley Park is 36.15.

21.6% of the population are experiencing income deprivation, this is higher than Doncaster and England at 16.6% and 12.9% respectively. Wheatley Hills is ranked the 21st most deprived community in Doncaster (out of 88). Within the 4 communities in the Wheatley Hills & Intake ward, Wheatley Park is the 3rd most deprived area. This is illustrated in the chart below.

Community	IMD Score	Ranked (across Doncaster)
Clay Lane	37.98	19/88
Intake	36.65	20/88
Wheatley Park	36.15	21/88
Wheatley Hills	21.26	51/88

Figure 7. IMD rating comparison for Wheatley Hill & Intake ward 2019

Furthermore, 26.6% of children are living in poverty in the Wheatley Hills & Intake ward, this is significantly higher than England (17.1%) and Doncaster (22.7%). The number of older people in poverty index (IDAOPi) in the ward (20.9%) is significantly higher than the England (14.2%) and Doncaster (15.9%) rate and is the 5th highest rate across the City.

Fuel Poverty

Fuel poverty is directly linked to energy efficiency, energy prices and household income. Fuel poverty is distinct from general poverty: not all poor households are fuel poor, and some households would not normally be considered poor but could be pushed into fuel poverty if they have high energy costs. Evidence shows that living in cold homes is associated with poor health outcomes and an increased risk of morbidity and mortality for all age groups; furthermore, studies have shown that more than one in five (21.5%) excess winter deaths in England and Wales are attributable to the coldest quarter of housing.

Modelled estimates of the proportion of households in fuel poverty shows that 18.8% of households in Doncaster are living in fuel poverty. At a ward level, 21.8% of households in the Wheatley Hills & Intake ward are experiencing fuel poverty, higher than the Doncaster (18.8%) and England (13.2%) rate.

The map below outlines fuel poverty levels across the city of Doncaster, with darker colours indicating higher deprivation.

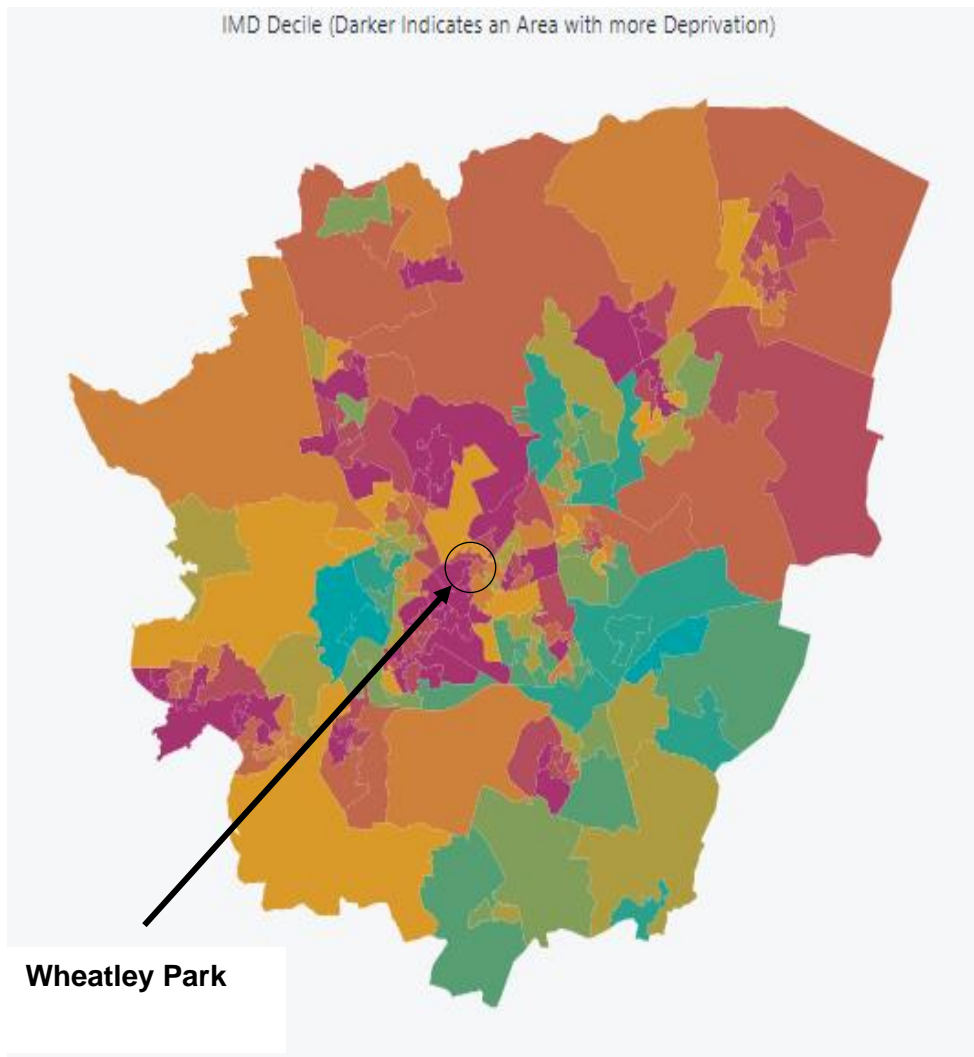


Figure 8. IMD Deciles

Food Poverty

There are 11 active foodbanks in the Central locality of Doncaster. On average, these foodbanks support approximately 476 adults and 311 children per month. The main reason for residents requiring food support is Cost-of-Living, followed by Low Income, Benefit Changes, Benefit Delays and Debt.

Employment

Wheatley Park has a high proportion of economically active people: in employment (59.2%) compared to England (57.4%) and Doncaster (54.9%). With, a lower proportion of economically inactive individuals (36.6%) compared to England (39.1%) and Doncaster (41.7%).

Economically active adults are those aged 16 years and over who are:

- in employment (an employee or self-employed)
- unemployed, but looking for work and could start within two weeks.
- unemployed, but waiting to start a job that had been offered and accepted.

Economically inactive are those aged 16 years and above who did not have a job, and had not looked for work, this can include retired individuals and students.

Census data (2021) shows a high number of residents that are not in employment: never worked in Wheatley Park (33.0%) compared to Doncaster (27.2%). 13.3% of residents are not in employment: not worked in the last 12 months, again higher than the Doncaster rate of 11.2%.

Those that are in employment in Wheatley Park are more likely to be in elementary or lower skilled roles, and less likely to be in managerial or professional professions. This is demonstrated in the infographic below.

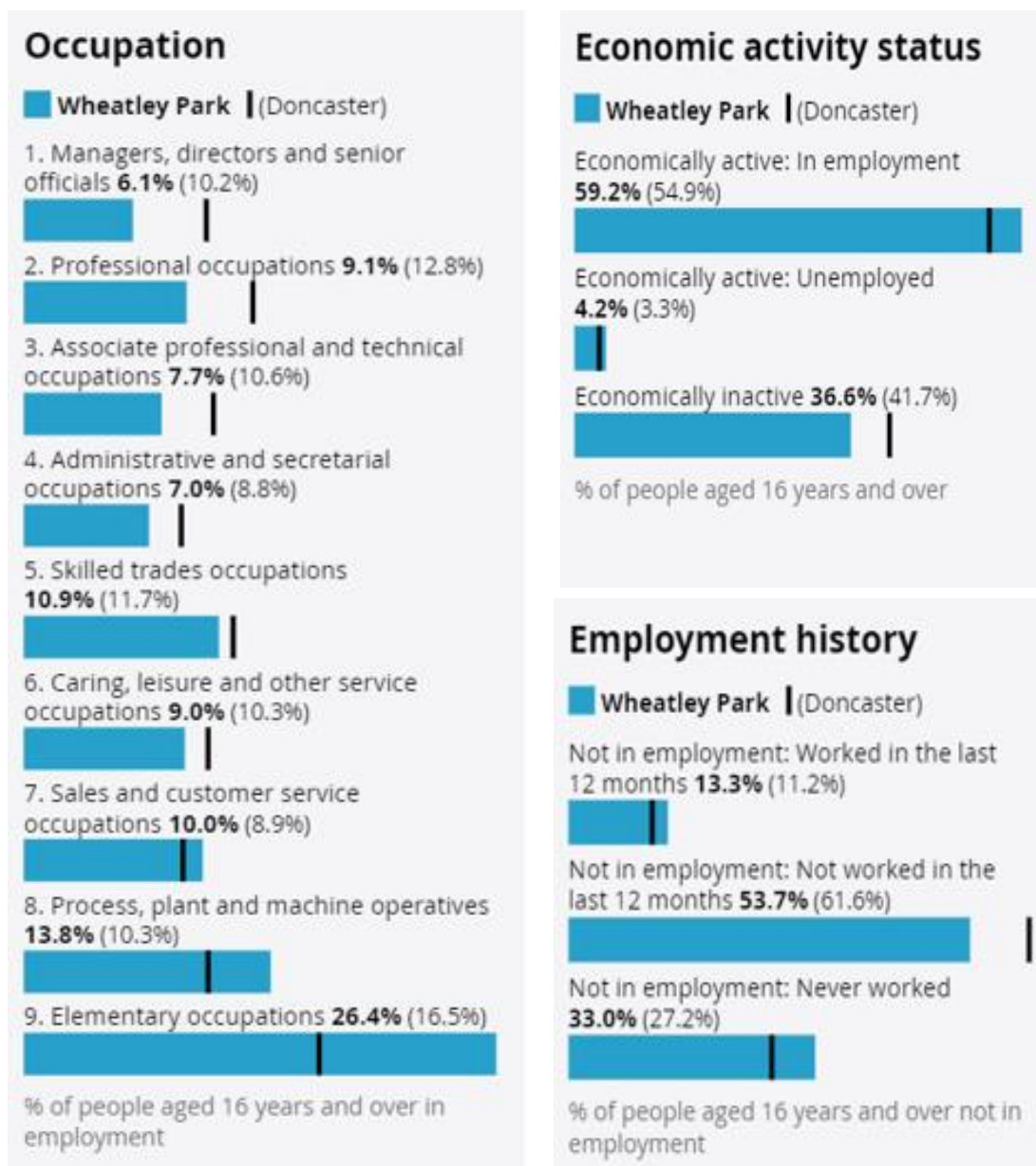


Figure 9. Occupation, Employment History and Economic activity status in Wheatley Park (Census 2021)

Alongside this, 27.7% of residents in Wheatley Park have no qualifications, a higher rate than Doncaster at 24.6%. The number of residents in Wheatley Park that have an apprenticeship (7.1%) is higher than Doncaster (6.7%). This can be seen on the infographic to the right which compares Wheatley Park to Doncaster. The map below shows the number of residents with no qualifications, the darker colour represents a higher prevalence.

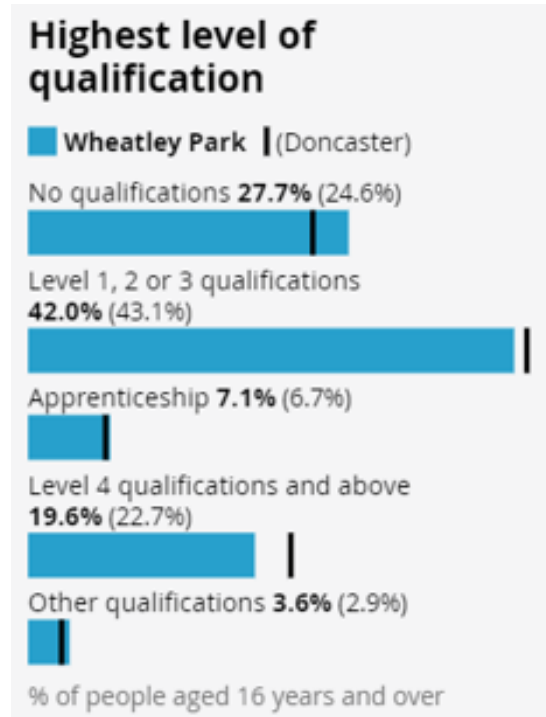


Figure 10. Qualification levels in Wheatley Park (Census 2021)

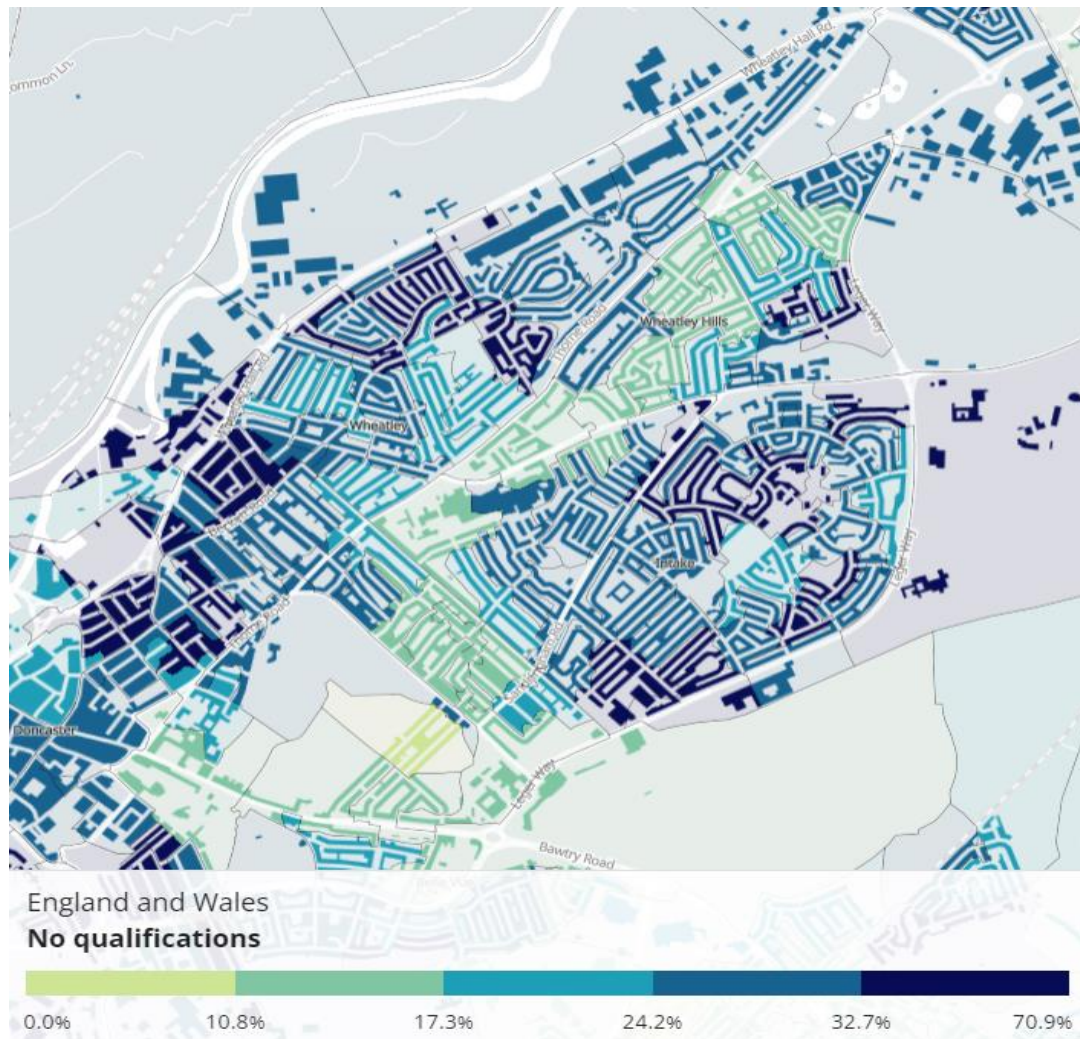


Figure 11. Census data 'No qualifications'

Citizens Advice Doncaster Borough

Citizens Advice Doncaster Borough (CADB) is an independent, local charity and a member of the Citizens Advice network. They provide free advice and support to meet the needs of communities. This includes advice on a range of problems, such as with work, debt, benefits, immigration, housing and more.

In the Fiscal Year 2023/24 (which includes data from Quarter 1 and Quarter 2) data shows that 261 clients were supported in the Wheatley Hills & Intake ward across 154 postcodes. Of the total number of interactions (70,944) 252 were repeat interactions and 2944 were new interactions. The income gain for this area was £450,198. The leading issue for requiring support was dealing with debt repayments.

The map below shows interactions by postcode for Wheatley Park. The purple dot represents an interaction.

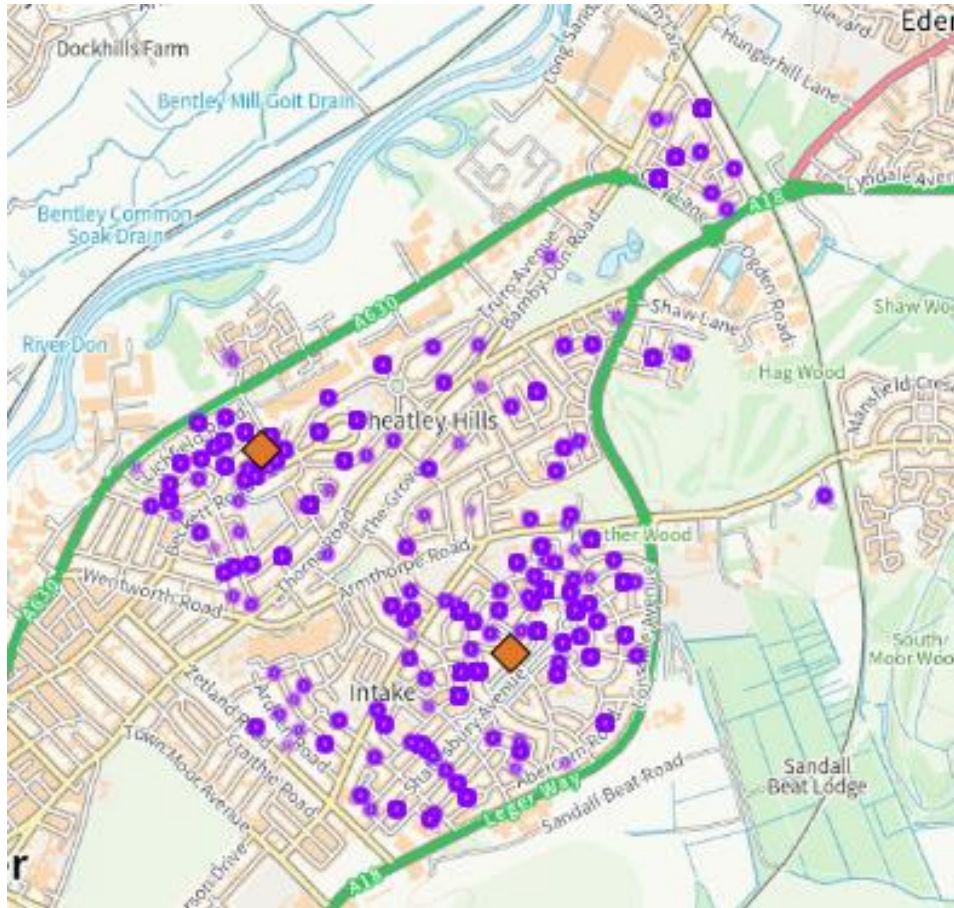


Figure 12. CADB postcode interactions (2023)

Child Development

Growing up in poverty damages children's health and well-being, adversely affecting their future health and life chances as adults. Ensuring a good environment in childhood, especially early childhood, is important. A considerable body of evidence links adverse childhood circumstances to poor child health outcomes and future adult ill health. The Income Deprivation Affecting Children Index (IDACI) measures the proportion of all children aged 0 to 15 living in income deprived families. In the Wheatley Hills & Intake ward, 26.6% of children are classed as living in child poverty, this is higher than Doncaster at 22.7%, and significantly higher than England (17.1%).

The prevalence of children classified as overweight (including obese) in reception in Wheatley Hills & Intake shows the same rate as Doncaster at 26.1%. However, this is significantly higher than in England (22.6%). This further increases to 39.2% in Year 6.

Emergency hospital admissions for injuries in 15–24-year-olds in the Wheatley Hills & Intake ward is significantly high at 157.8 per 10,000.

Conversely, emergency hospital admissions in under 5 years old in the Wheatley Hills & Intake (86.4 per 1000) are significantly lower than the National rate, and below Doncaster at 91.1.

Family Hubs

Doncaster Family Hubs are the 'place to go' for families. They work with other providers to offer a range of activities, services and information for families and welcome families with children of all ages from conception through childhood to adolescence. There are 3 family hubs within the Central locality, these are located in Central, Balby and Wheatley. Family Hub membership in the Wheatley Hills & Intake ward is higher than the Doncaster total at 86% and 83% respectively.

Part of the role of Doncaster Family Hubs is to provide support to families accessing two-year-old funding (a government scheme funded entitlement to childcare). The number of eligible children living in the Wheatley Hills & Intake ward taking up their funding entitlement to Two Year Funding is 71. The total number of open families that are working with family hub services is 7. The total number of children aged under 5 years who are receiving targeted support with their development is 49. These statistics are amongst the highest across the city of Doncaster.

School Attainment

The Department for Education supplies each local authority with the school attainment grades for those in KS2 and KS4. At KS4, each pupil is given an Attainment 8 score (a score out of 90) based on their 8 best GCSE grades including English, maths and at least 3 other traditional academic GCSEs (sciences, languages, and humanities). Other qualifications at an equivalent level (e.g., BTECs) can also count towards the score.

In 2019, average GCSE attainment 8 score per pupil was 45.0 in Wheatley Park, this is similar to both Doncaster (44) and England (46.7). Results in 2023 decreased to 41.1 in Wheatley Park, lower than in Doncaster (45.2) and England (48.8).

In 2023 for KS2, 46% of pupils achieved the expected standard in reading, writing, and mathematics in Wheatley Park, a decrease from 51% in 2022, and lower again from 2019 at 64%. This is compared to Doncaster (55%) and the England rate of 60%.

3 children in Wheatley Park have been recorded as receiving Elective Home Education and 9 are known to be missing education (City of Doncaster Council 2023).

Pupil Lifestyle Survey

The Pupil Lifestyle Survey is conducted by City of Doncaster Council to provide valuable data on children and young people's health-related behaviour, through an anonymous school-based questionnaire. Data from the survey has provided a set of Doncaster-wide figures at key points in children and young people's development; KS2, 3 and 4. 210 pupils participated in the Wheatley Hills & Intake ward, 112 were from Year 4 and 98 were from Year 6. No pupils from KS3 or KS4 completed the survey. It is important to note that the Pupil Lifestyle Survey is self-reported and was not completed by all the schools.

The results showed the Wheatley Hills & Intake ward as having the 3rd highest diverse population amongst school children in Doncaster, with 21% being from an ethnic minority

background. Alongside this, 43% of children in the Wheatley Hills & Intake ward use English as their 2nd language, compared to 22% for Doncaster.

Only 31% of children reportedly visited the dentist within the last 12 months, the combined second (with Mexborough) lowest rate across the city, following Hatfield.

97% of children reporting feeling warm and comfortable at home, with 79% feeling able to have a restful night's sleep. 85% reported feeling safe at home and 84% reported having a nice, safe place at home or near home to play. 69% of children reported being happy with life, similar to the Doncaster rate of 67%.

51% of children reporting that their school takes bullying seriously, and 29% reported being bullied in the last 12 months.

66% of children reporting feeling able to get involved in the community (outside of school), similar to Doncaster at 62%.

Health Inequalities

Long Term Health Conditions

In the Intake & Wheatley ward, the number of people who reported having a limiting long term illness or disability is significantly higher than the England rate, at 21.8% and 17.6% respectively (Office for Health Improvement & Disparities 2023). In Wheatley Park, 18.1% of residents classify as being Disabled under the Equality Act, this is higher than the England rate (17.3%) but lower than Doncaster (20.3%). The general health status as self-reported by residents in Wheatley Park shows better outcomes than that of Doncaster. This is illustrated in the infographics below.

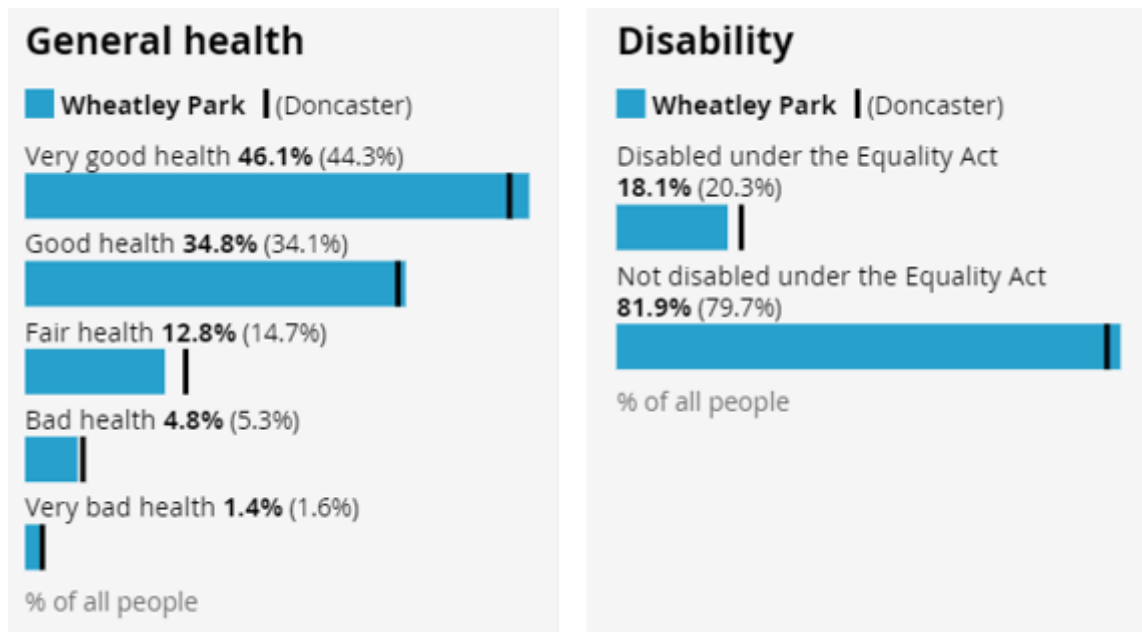


Figure 13. Health status in Wheatley Park (Census 2021)

At ward level, the incidence of lung cancer is significantly high (162.9) and ranks amongst the highest rates across the city. Emergency hospital admissions for chronic obstructive pulmonary disease (COPD) is also high (111.7) compared to England.

Emergency hospital admissions for myocardial infarction (heart attack) is high (118.6) compared to Doncaster (115.9) and England (100).

Emergency hospital admissions for intentional self-harm is significantly high (131.7) compared to Doncaster (121.6) and England (100).

Alcohol Consumption

Alcohol specific admissions per 1000 population for the period April 2016 – July 2023 are available for all 3 LSOAs in Wheatley Park. Wheatley Park Central (52.60) and Wheatley Park North (55.31) both have a higher incidence rate compared to the Doncaster average of 43.67. Wheatley Park South has a lower rate of 26.61. This can be seen in the infographic below.

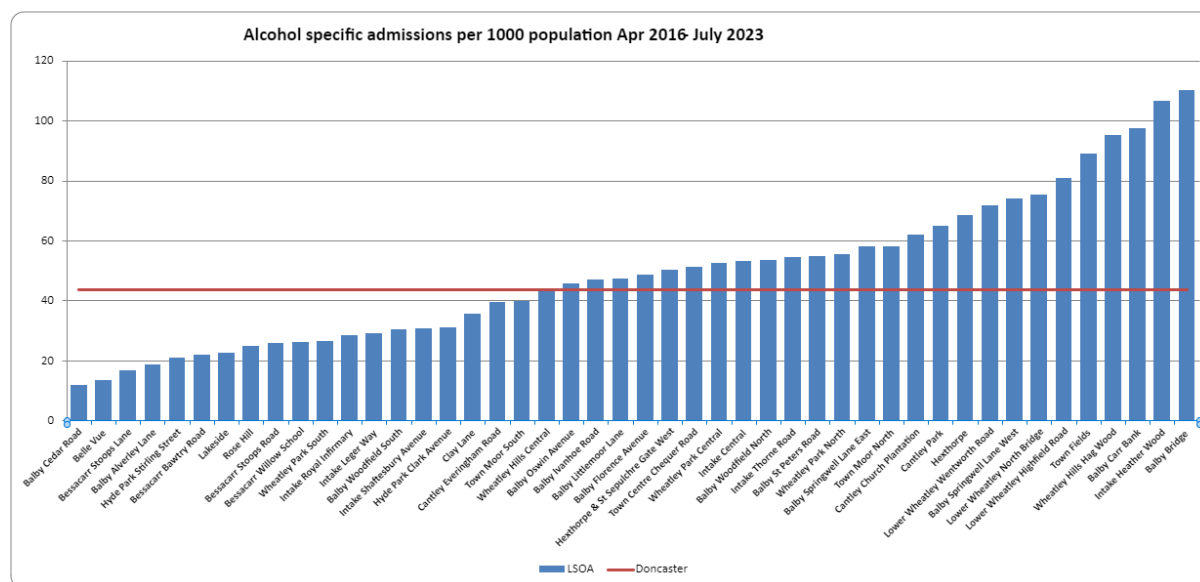


Figure 14. Alcohol specific admissions for Central locality

Smoking

Smoking status as self-reported by patients during registration at a GP practice is available for the Primary Care Networks across Doncaster. Wheatley Park falls within the Central Primary Care Network (PCN). High prevalence of smoking may be linked to significantly high rates of emergency hospital admissions for COPD and a high incidence rate of lung cancer across the Intake & Wheatley ward.

This has been outlined in the table below which shows smoking prevalence across all 4 PCNs compared to Doncaster.

Practice	Sum of Smokers	Sum of Prev
4 Doncaster PCN	7373	15.40%
Central PCN	10637	21.66%
East PCN	10139	17.17%
North PCN	11885	18.56%
South PCN	9298	17.03%
Doncaster	274681	17.96%

Figure 15. Smoking status by GP practice

Cause of Death

The leading cause of death in the Wheatley Hills & Intake ward is deaths from circulatory diseases at 154.7 / 100.0. Deaths from coronary heart disease, and preventable deaths, this assumes that the underlying cause of death could potentially be avoided by public health and primary prevention interventions (that is, before the onset of diseases or injuries, to reduce incidence) is also significantly high.

Life Expectancy

Life expectancy at birth in the Wheatley Hills and Intake ward is 77.2 years in men, which is lower than Doncaster (77.9 years) and England (79.5 years). Life expectancy for females is 81.5 years, this is similar to Doncaster (81.3 years) but lower than England (83.2 years).

Figure 15 and 16 below shows life expectancy at a ward level across the city of Doncaster for males and females.

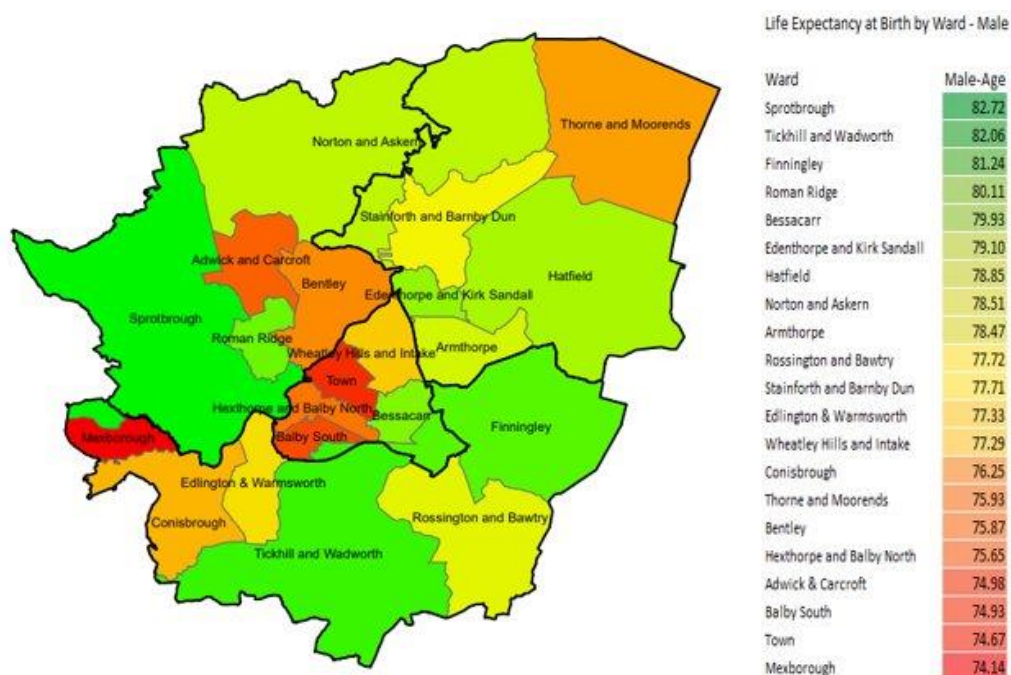


Figure 16. Life expectancy at birth by ward - Male

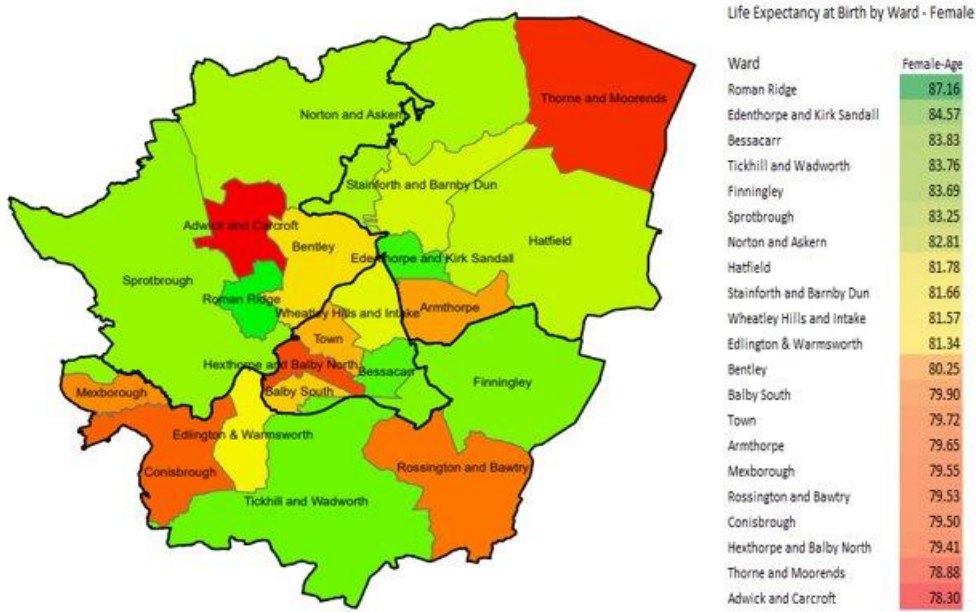


Figure 17. Life expectancy at birth by ward - Female

Physical Activity

It is known that Doncaster has more physically inactive adults, and fewer physically active adults than the national average. 28.9% of adults in Doncaster are physically inactive, this is significantly higher than the England rate (23.4%).

Mosaic data shows a large percentage of the population in Wheatley Hills & Intake do not engage in any moderate intensity physical activity. Please see [appendix](#) for more information on mosaic data.

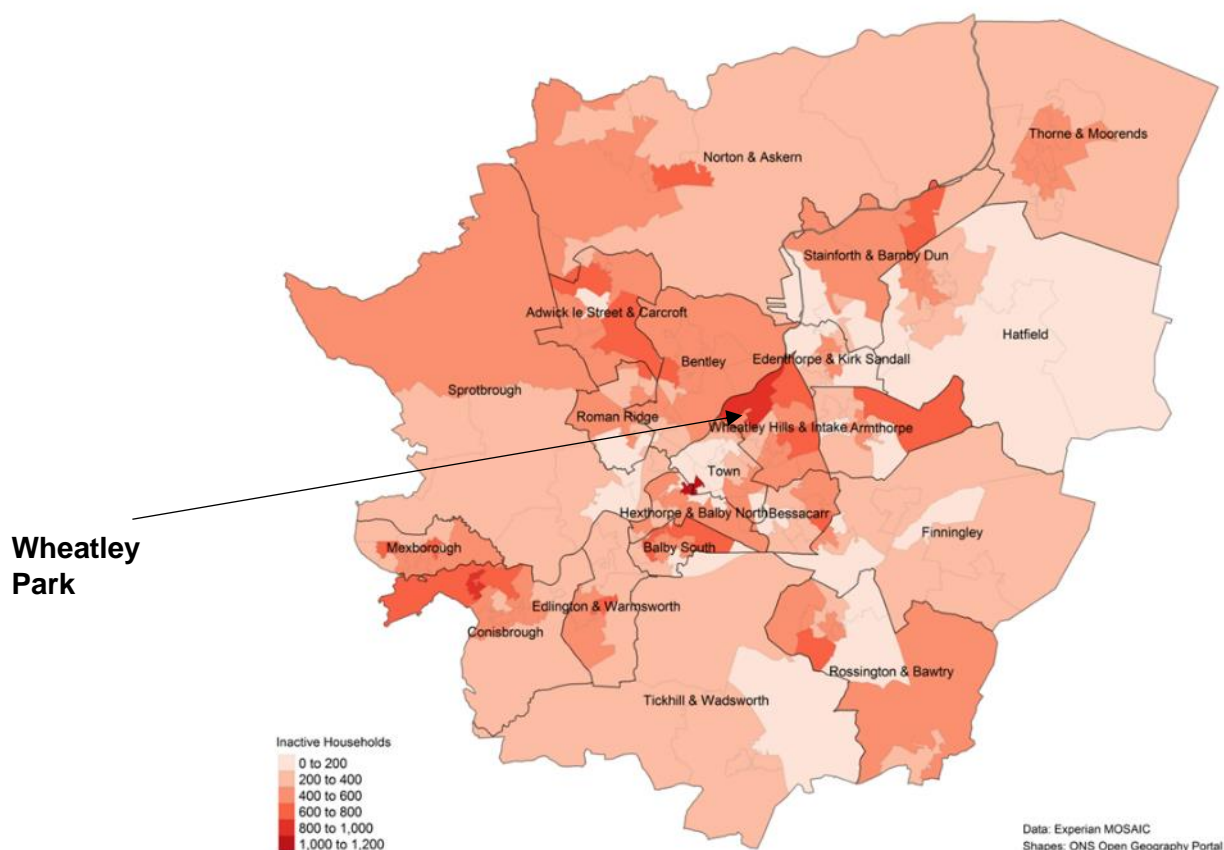


Figure 18. Mosaic map of household physical activity levels in Doncaster.

Data from the Pupil Lifestyle Survey (2022) shows that 32% of children are physically active on only one or two days a week, with 26% being active on three of four days, and 38% on five or more occasions. The number of children that are physically active on 5 or more days per week ranked the lowest across the city.

The leading reasons given by pupils when asked why they did not participate in physical activity in Wheatley Hills & Intake included getting hot and tired, not being very good at it, and feeling shy about my body.

Active Travel

Census data (2021) shows that the majority of residents aged 16 years and over in employment in Wheatley Park travel less than 10km to a place of work (53.2%).

The leading method of travel to the workplace is driving a car or van (52.5%), with 9.6% being a passenger in a car or van. 12.2% use a bus, minibus, or coach, which is over twice as high as the Doncaster rate of 4.6%.

The number of residents in Wheatley Park that travel by active travel modes such as bicycle or walking (15.0%) is higher than both the England (9.7%) and Doncaster (8.9%) rate.

Furthermore, the Pupil Lifestyle Survey showed that 52% of children in the Wheatley Hills & Intake ward reported walking to school, this is higher than the Doncaster average of 47%.

Parks and Green Spaces

'Doncaster Future Parks' is the name given to Get Doncaster Moving's approach to improving parks and open spaces, so that more people can enjoy green spaces, and more often.

In parks identified as 'Future Parks' sites, GDM work closely with local communities to understand what improvements they would like to see (such as footpaths, signage, and notice boards), and what activities people might like to see taking place there (such as community events).

Town Field is one of several Future Parks in Doncaster. The engagement work in Town Field highlighted that the community would like to see improved lighting on site, enhancements to points of access, improved signage, and notices. Following on from engagement with residents a new community group started at Town Field. The group are working towards developing activities and events on the park.

The responses from analysis which took place in June 2022 can be seen on the following page.



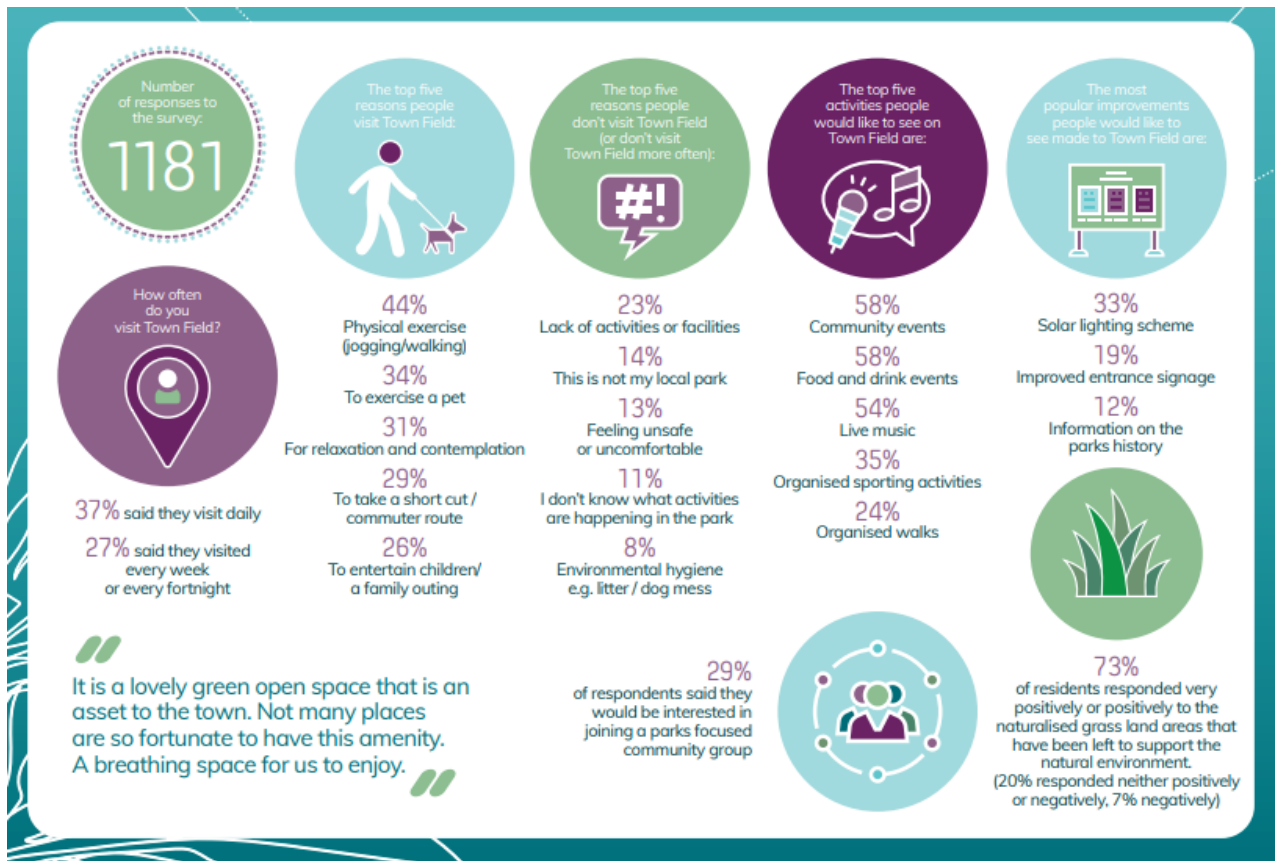


Figure 19. Town Field future park responses

Population Health Management

COVID-19 has had a huge impact on communities, and it is vital to understand the impact and direction the pandemic has had on community organisation in the ward so that support can be offered, and work can be done to manage any gaps or risks associate with changes. To support with this, Well Doncaster officers undertake regular population health management insight with community organisations in Wheatley Park identifying their current status and needs, and work with each group to meet their goals. This is a living document and will be updated and adapted as needs are met and change. If you would like more detail on this, please contact WellDoncaster@doncaster.gov.uk

Community Information

Population

6,400 (Census 2021)

The population of Wheatley Park has a higher proportion of children and young people aged 0-14 years and adults aged 25 – 44 years with a lower-than-average number of adults aged 50 years and above, and 15 – 24 year olds compared to Doncaster. This is demonstrated in the infographic below.

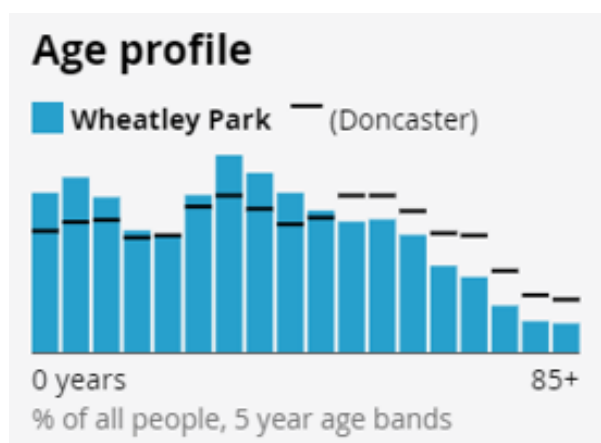


Figure 20. Age profile of Wheatley Park

Wheatley Park		England	
Age Band	Proportion	Age Band	Proportion
0 - 4 years	7.1%	0 - 4 years	5.4%
5 - 9 years	7.8%	5 - 9 years	5.9%
10 - 14 years	7.0%	10 - 14 years	6.0%
15 - 19 years	5.5%	15 - 19 years	5.7%
20 - 24 years	5.2%	20 - 24 years	6.0%
25 - 29 years	7.3%	25 - 29 years	6.6%
30 - 34 years	8.8%	30 - 34 years	7.0%
35 - 39 years	8.2%	35 - 39 years	6.7%
40 - 44 years	7.2%	40 - 44 years	6.3%
45 - 49 years	6.4%	45 - 49 years	6.4%
50 - 54 years	5.9%	50 - 54 years	6.9%
55 - 59 years	6.1%	55 - 59 years	6.7%
60 - 64 years	5.3%	60 - 64 years	5.8%
65 - 69 years	4.0%	65 - 69 years	4.9%
70 - 74 years	3.4%	70 - 74 years	5.0%
75 - 79 years	2.1%	75 - 79 years	3.6%
80 - 84 years	1.4%	80 - 84 years	2.5%
85 years and over	1.3%	85 years and over	2.4%

Figure 21. Age band comparison between Wheatley Park and England

Demographics (Ethnicity, Language, and Religion)

84.2% of the population in Wheatley Park are White, lower than the Doncaster rate of 93.1%. 6.8% of the population are Asian, Asian British, or Asian Welsh, this is significantly higher than the Doncaster rate of 2.9%. 2.8% of the population are Black, Black British or Black Welsh, Caribbean or African, this is higher than Doncaster (1.2%) but lower than England (4.2%). 6.2% of the population are mixed or multiple ethnic groups, or of other ethnic groups.

24.6% of the population were born outside of the UK, higher than the Doncaster rate of 10.4%. 17.4% of the population in Wheatley Park identify as non-UK, compared to 7.0% in Doncaster.

Furthermore, 1 in 5 residents are non-UK passport holders (19.2%), with 19.5% having no passport.

80.1% of residents in Wheatley Park use English as their main language, lower than the Doncaster average of 92.8%.

Just under half of residents in Wheatley Park are of Christian religion (45.8%), this is similar to the England rate of 46.3%, but lower than Doncaster at 50.9%. 7.8% of the population are Muslim, higher than Doncaster at 2.2%.

This is illustrated in the infographics below which compare Wheatley Park to Doncaster.

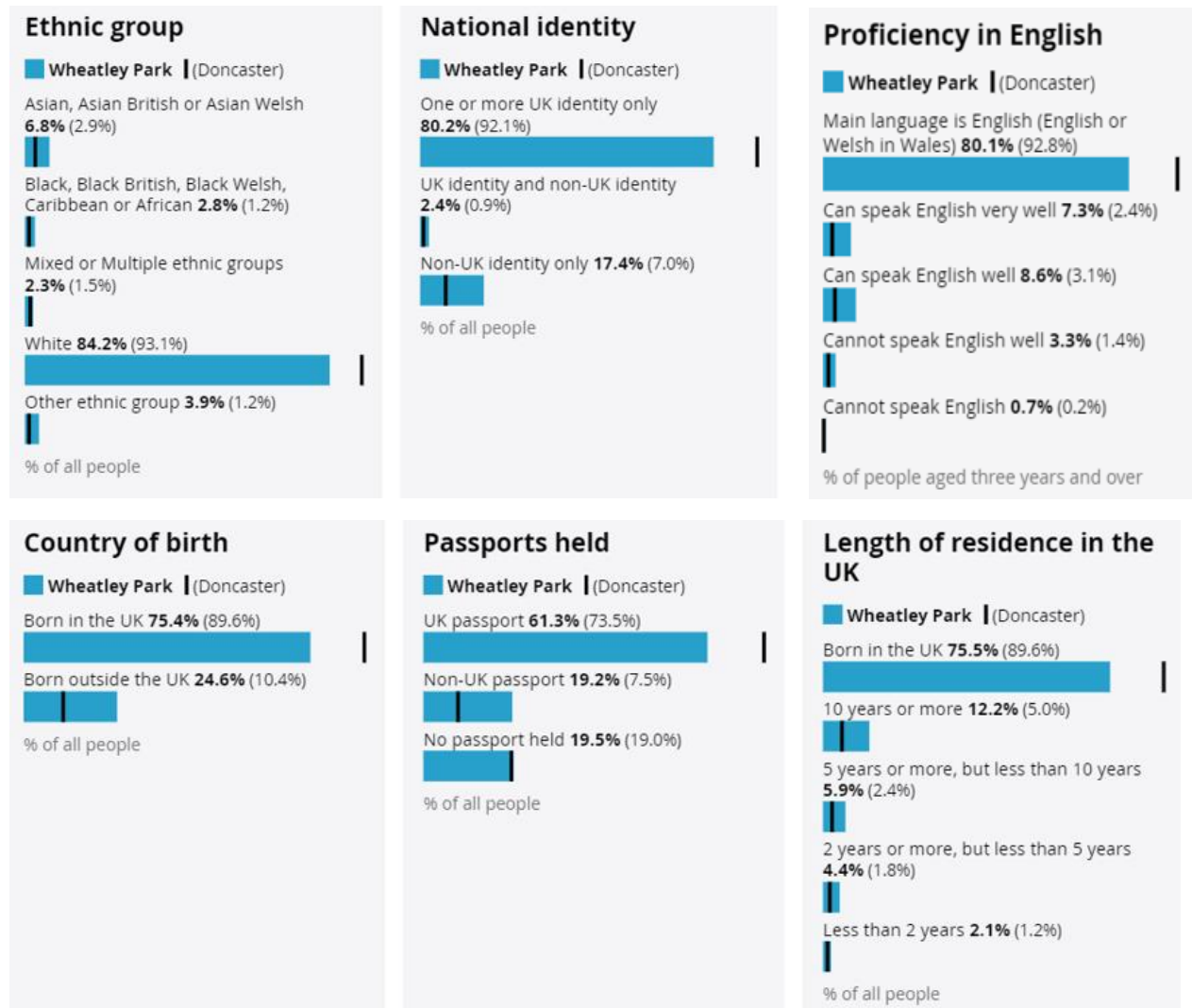


Figure 22. Demographic comparison between Wheatley Park and Doncaster

The map below shows the number of people born outside of the UK. The darker colour represents a higher prevalence of residents who were born outside of the UK living in the Wheatley area.

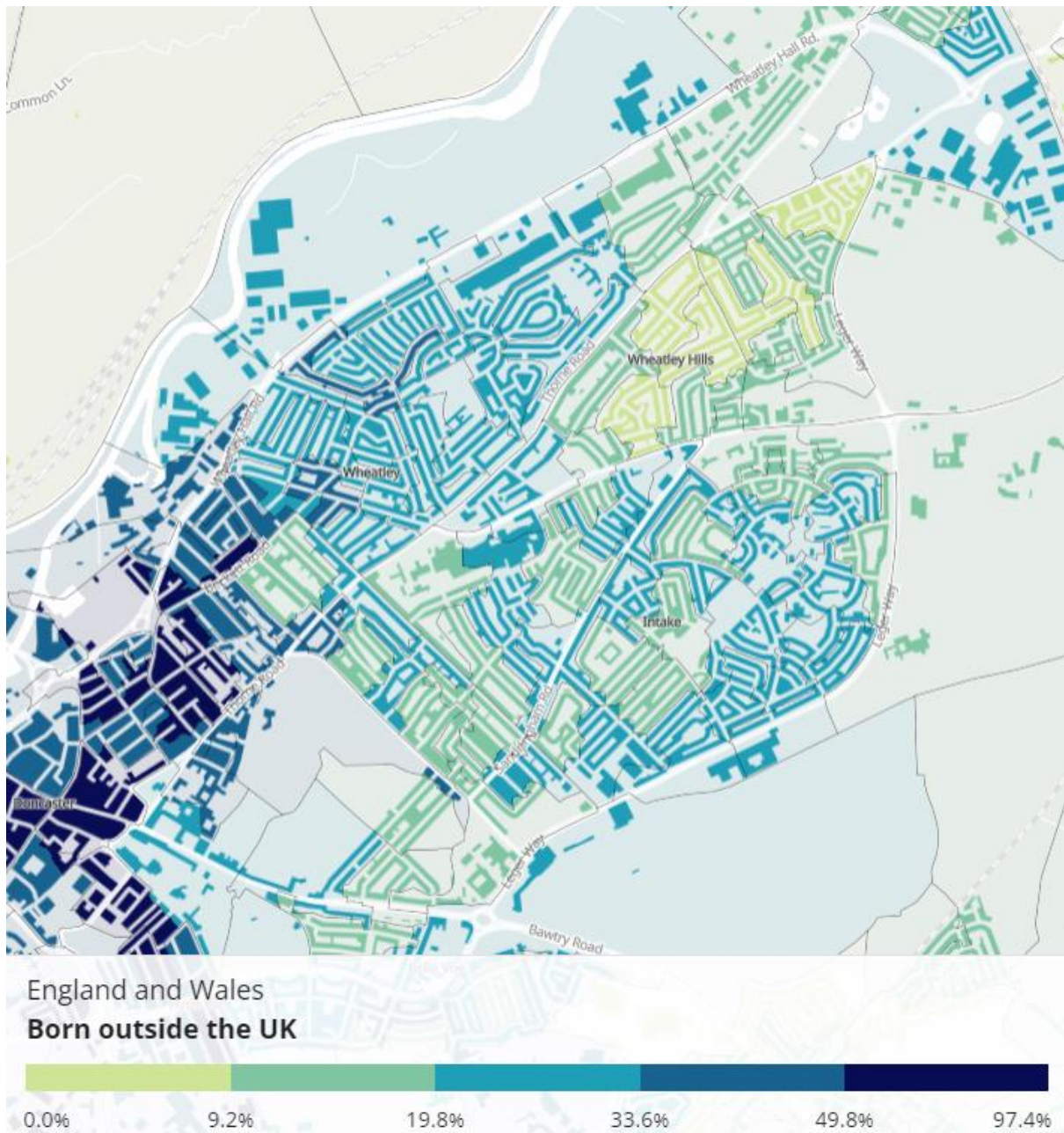


Figure 23. Census data ‘Born outside the UK’

Housing

Housing conditions and the surrounding environment can have profound impacts upon residents’ health and exacerbate health inequalities. The data below explores several variables to analyse the housing in Wheatley Park.

There are 2,600 households in Wheatley Park. The majority of households are whole houses or bungalows (93.1%), comprising of 3 bedrooms (72.5%). 19.4% of households in Wheatley Park contain 3 people, and 23.7% contain 4 or more people, both higher than the Doncaster rates. This fits in line with the demographic of having a large proportion of children and young people in the community.

Census data shows that the number of private rented properties (or people living rent free) in Wheatley Park (21.0%) is higher than in Doncaster (19.7%). The number of social rented

households is also high at 24.6%, compared to Doncaster (17.0%). Home owned outright is lower in Wheatley Park than in Doncaster, at 24.7% and 33.6% respectively.

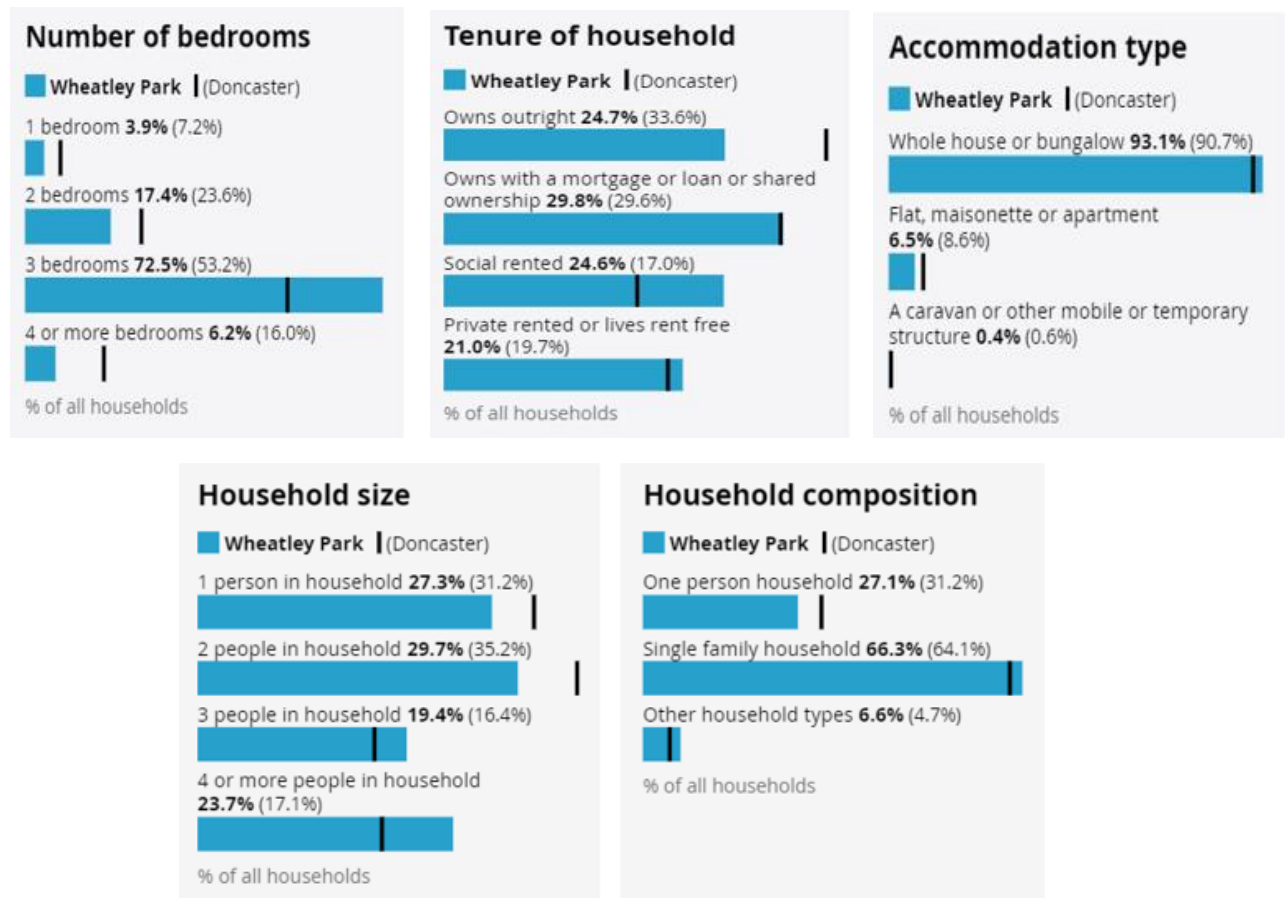


Figure 24. Household statistics in Wheatley Park (Census 2021)

St Leger Homes is the main provider of Social Housing in Doncaster. St Leger homes own 849 properties in Wheatley Park. This comprises of 199 bungalows, 135 flats, 495 houses, 19 bedsits, and 1 maisonette. Those who rent these properties are mostly aged 26-45 years (287), 46-65 years (292) and 65 years and above (228). With 25 households being 18-25 years and 2 households being under 18 years.

The total rent arrears from those living in St Leger properties in Wheatley Park was £74,476.00 in 2022/23, this increased from £61,556.00 in 2021/22.

Stronger Families

Antisocial Behaviour

Doncaster Stronger Communities Service looks to tackle all forms of anti-social behaviour, Hate Crime and lower level community safety within neighbourhoods. The Central team are responsible for working in partnership with a range of agencies to deliver a joined up approach that addresses needs identified within an area as well as more cross cutting and complex work around community tensions and cohesion. Wheatley & Intake is one of five wards aligned to the Stronger Communities Team.

Data on the number of early interventions, ASB, hate crime and low level crime issues identified and managed in the Central locality show 1580 cases, of these 349 incidents were in the Wheatley & Intake ward (3rd highest following Town ward and Hexthorpe & Balby North ward). These are issues that are purely dealt with by Stronger Communities Officers prior to any other agency/multi-agency involvement in the true sense of early intervention and thus preventing escalation and involvement from other, more costly service, and is shown in the infographic below.

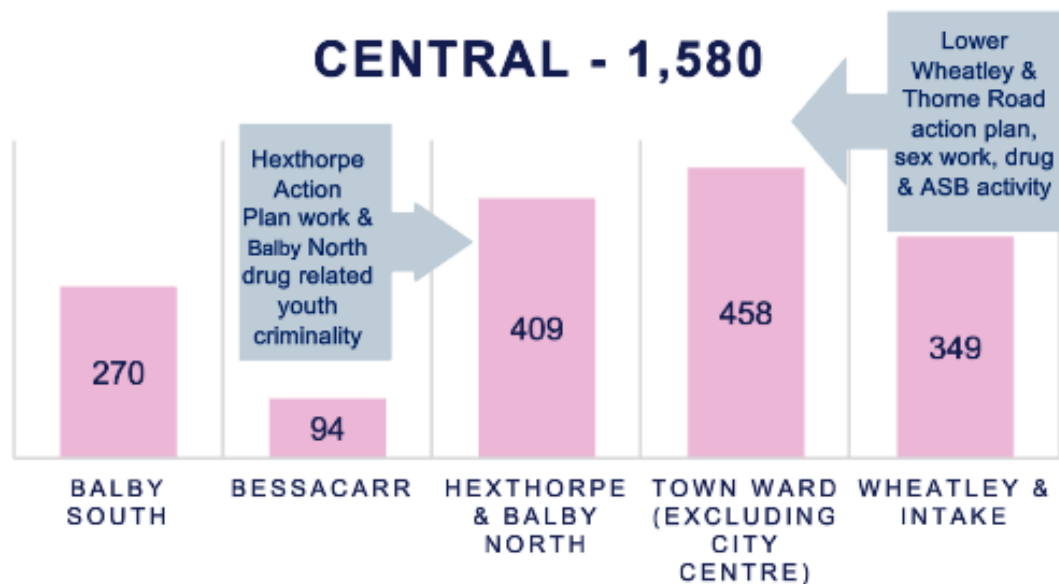


Figure 25. ASB/ Early intervention & prevention by Ward (Partnership ASB ward level performance 2023/24)

Antisocial behaviour incidents by ward highlighted that of the 604 incidents in the Central locality, 68 incidents were in the Wheatley Hill & Intake ward – 3rd lowest above Balby South (61) and Bessacarr (37).

Vulnerable Victims

The number of vulnerable victims for each Locality is also recorded. These figures represent individuals affected by repeat incidents of ASB. The below shows that the Central locality had the 2nd highest rate of vulnerable individuals, at 41. Of these 16 were in the Wheatley and

Intake ward, this was the highest figure across the Central locality followed by Hexthorpe & Balby North (12).

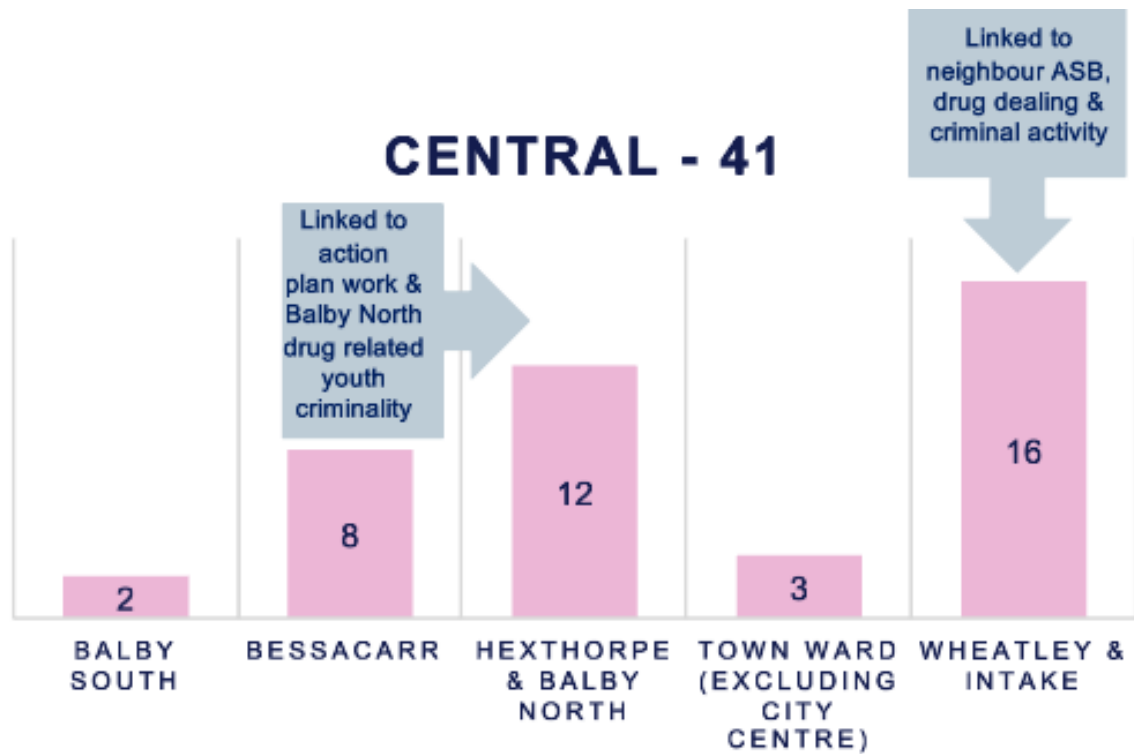


Figure 26. Vulnerable Victims by Ward (Partnership ASB ward level performance 2023/24)

Community Insight

Appreciative Inquiry

Appreciative Inquiry (AI) is a strength-based approach to understanding what is working well. It involves asking a series of structured questions which are analysed to identify themes that can be used to create positive change. The questions seek to understand past and present successes to help plan and create a bright and positive future. Used in a community setting, the process consists of four phases:

1. **Discovery Phase** – This will involve engagement with the residents to find out what is working well in the community. Responses will be themed to allow priorities of the community to be established.
2. **Dream** – Residents and key stakeholders will be invited to attend an initial workshop to discuss what ideas they have for their community and how these will meet the priorities highlighted in the discovery phase.
3. **Design** – All attendees are invited back for a second workshop to develop an action plan for community action.
4. **Deliver** – A collaborative way of working and investing resources in working towards the actions from the design phase.

The Well Doncaster Team undertake Appreciative Inquiry every year to ensure the voice of the community is heard and understood. Following the COVID-19 pandemic, this is more important than ever. As Armstrong (2020) demonstrates, through appropriate questioning, appreciative inquiry can help us move away from focusing on what is wrong, to capitalising on what is right to help strengthen and restructure communities. As communities look for the positives in their future, we hold up a mirror that shows them where the positive future lies – with them and their community.

In 2023, a Discovery phase was undertaken in Wheatley Park as part of the AI approach. The table below outlines the emerging themes identified during the thematic analysis.

Theme	Quotes
Environment and Green Spaces	<i>“We have nice neighbours and regular litter picks; the litter picks are working well”</i> <i>“Nice green spaces, clean parks, community”</i>
VCFS, Amenities and Services	<i>“Community projects are free to families, Wheatley Wombles, Community Litter picks”</i> <i>“Good family Hub services”</i> <i>“I started the CAN with others.... I attend the Evangelical Church, Golden Outlook session”</i> <i>“I play Dominos and do jigsaws and have tea and biscuits”</i>
Wellbeing	<i>“I go walking with my friends, I like spending time with my friends. Helps me not be alone”</i>

	<p><i>"Wellbeing session at the Baptist church is good"</i></p> <p><i>"I have a good support network here"</i></p>
Community Cohesion	<p><i>"Neighbours are nice and friendly"</i></p> <p><i>"Community projects are free"</i></p> <p><i>"Community working together for a better Wheatley"</i></p>
Community Issues and Safety	<p><i>"Would be nice if more policing of the park"</i></p> <p><i>"Need the area cleaner"</i></p> <p><i>"Wheatley needs to be safer"</i></p>

Doncaster Talks

In 2019, Doncaster Talks undertook an insight across the City of Doncaster. Responses were separated into wards and thematically analysed.

Across the Wheatley Hills & Intake ward, 180 responses were received which equates to 0.99% of the ward. An overview of responses can be seen below.



Figure 27. Wheatley Hills & Intake responses

Locality Plan

Locality plans look at how we can together to strengthen communities and improve the lives and opportunities for residents living there.

The Central Locality Plan has been developed in conjunction with residents and sets out what will be done to improve the community over the next 12 months. Communities were engaged with through a number of different ways:

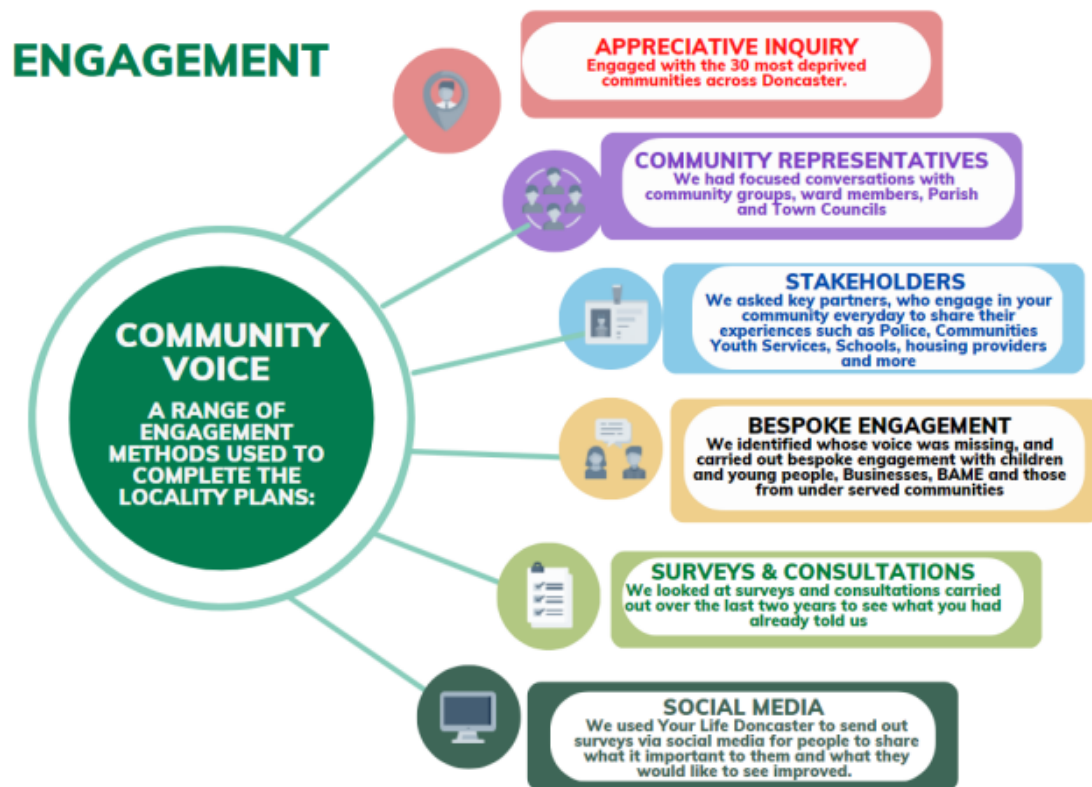


Figure 28. Community Voice engagement methods

The 2023-24 Locality Plan for the Central Communities outlines a set of priorities and can be viewed using the following link [Central Locality Plan 2023/24](#)

Community Investment

Over the last 3 years there has been £2.42 million of investment into the Central Locality from Public Health and partnerships. This investment has been successfully awarded to partners and VCFS groups. The top 3 areas of funding spend has supported Youth Activities (£348,604), Community Engagement Employment (£287,915) and Mental Health (£234,312).

References

Armstrong, A.J., Holmes, C.M. and Henning, D., 2020. A changing world, again. How Appreciative Inquiry can guide our growth. *Social Sciences & Humanities Open*, 2(1), p.100038.

Appendix

Well Doncaster Annual reports

Well Doncaster Approach: <https://youtu.be/e1RKOZoGI10>

More information about how Well Doncaster has been meeting outcomes and objectives can be found in past and present annual report:

<https://welldoncaster.wordpress.com>

Census data 2021

The census is undertaken by the Office for National Statistics every 10 years and gives us a picture of all the people and households in England and Wales.

[Build a custom area profile - Census 2021, ONS](#)

[Census Maps - Census 2021 data interactive, ONS](#)

Public Health Data

Fingertips

This is a new fingertips profile that uses data from Local Health an existing PHE data tool. Local Health is a collection of quality assured health information presented for small geographical areas. By presenting data for small areas, Local Health provides evidence of inequalities within local areas. It supports targeted interventions to reduce such inequalities.

Local Health contains indicators related to:

- Population and demographic factors
- Wider determinants of health
- Health outcomes

It presents data for middle super output areas (MSOA), electoral wards, clinical commissioning groups (CCG), local authorities, and England as a whole.

Please note, as the Local Health tool was designed to allow users to map small area data, a mapping option has not been provided in this profile.

<https://fingertips.phe.org.uk/profile/local-health/data#page/0>

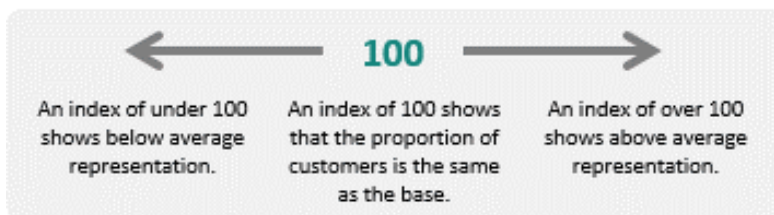
Acorn profiles

Wellbeing Acorn segments the population into 4 groups (Health Challenges; At Risk; Caution; Healthy) and 25 types describing the health and wellbeing attributes of each postcode across the country. By analysing significant social and health related behaviour, it provides precise information and an in depth understanding of upstream issues affected by current lifestyle traits.

INTERPRETING THE REPORT

The Wellbeing Acorn profile report helps you understand the underlying demographics, lifestyle and health attributes of your customers and service users by comparing their Wellbeing Acorn profile to a base (e.g. UK population, area or other customer groups).

INDEX



The Wellbeing Acorn Profile contains 12 variables that are indicators of Disability or Infirmary in the population and 9 variables related to unhealthy Behaviours. The average score measured against the base profile of Yorkshire and the Humber is 100. A value above 100 indicates that the area population is overrepresented for this characteristic, below 100 the value is less than the average or under represented.

Get Doncaster Moving survey

<https://getdoncastermoving.org/uploads/dmbc-phase-1-summary-report-final.pdf?v=1558622409>

Mosaic data

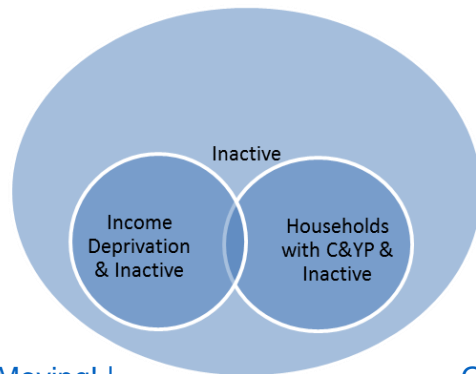
Mosaic Public Sector classifies the UK population into one of 66 types and 15 groups through a detailed and accurate understanding of each citizen's demographics, lifestyles, behaviours, and location.

The Physically Inactive Population of Doncaster

The MOSAIC types who “Do not exercise” and “Do not take part in Sport” were searched and three priority groups have been identified through work with strategic partners as part of the development of Doncaster’s Physical Activity Strategy. The three priority groups are:

- The Inactive
- Families with children and young people
- People living in income deprivation

These groups are cross-referenced against the inactivity list allowing for the identification of MOSAIC types which are both likely to be inactive and living in deprivation as well as inactive and from households with children and young people.



Link to the Get Doncaster Moving strategy; [Let's Get Moving! | Doncaster Moving](#)

[Get](#)

Pupil Lifestyle Survey 2022

[Pupil Lifestyle Survey - Healthy Schools \(healthylearningdoncaster.co.uk\)](https://healthylearningdoncaster.co.uk)

Power BI – Joint Strategic Needs Assessment

The Joint Strategic Needs Assessment (JSNA) is a process that identifies the current and future health and wellbeing needs of a local population. The dashboards show information about the employment, health, and wellbeing of people in Doncaster. We use this information to inform our policies and strategies to improve the lives of everyone in the Doncaster area.

[Joint Strategic Needs Assessments - Team Doncaster](#)

