

# Bawtry & Austerfield Community Profile Well Doncaster



**Well Doncaster**

**Community Led Health and Wealth**

Empowering people in Doncaster to live better, healthier, and happier lives.

[www.welldoncaster.uk](http://www.welldoncaster.uk)

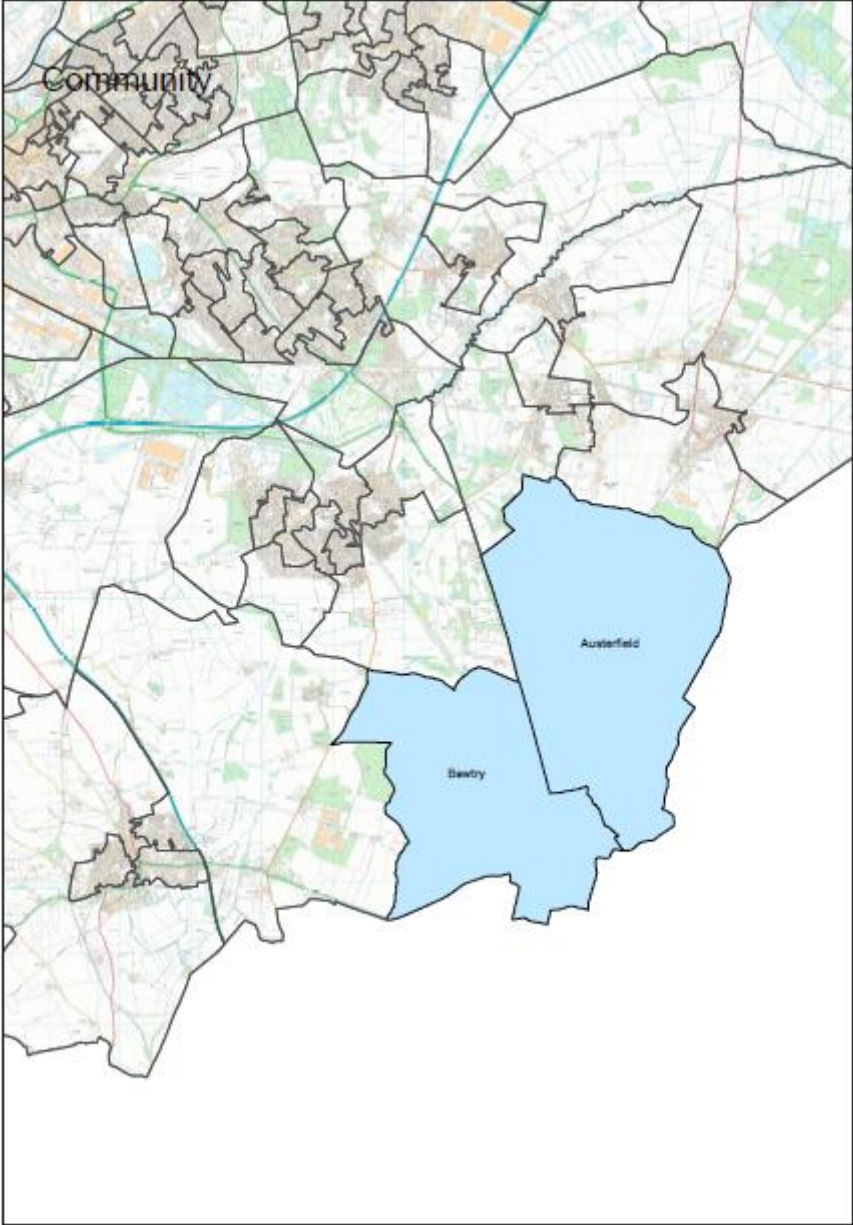
Well Doncaster  
**Community  
Wealth Builder**

Well Doncaster  
**Be Well**



**City of  
Doncaster  
Council**



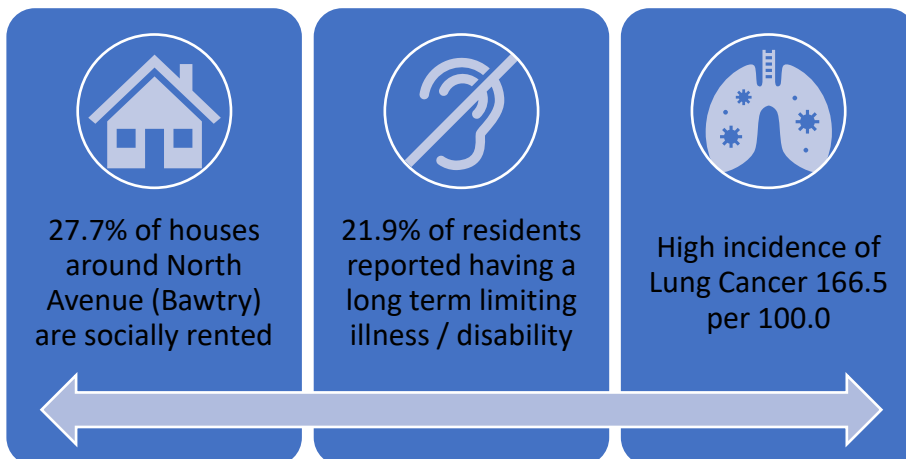
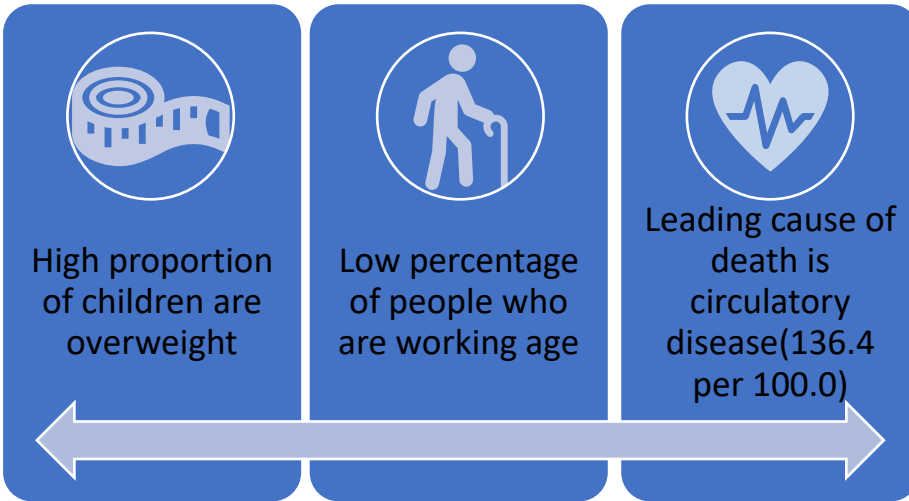


## This Report

This report focuses on Bawtry & Austerfield, which is in the Rossington and Bawtry Ward in the South of the City. The report begins with a one-page summary outlining key information and priorities for the area. This document shows the initial conversations with communities, including ward members, community organisations, faith groups, residents and other organisations who work in the area. Communities' knowledge of their own areas enables them to identify their strengths and the assets on which they can build on. This document builds on the initial conversations in 2021 with the intention of supporting those conversations and sharing information that might not be readily available to local people.



# Bawtry



# Contents

This Report .....	4
One Page Summary .....	8
Assets .....	9
Asset Maps .....	9
Business Assets.....	9
Community Assets .....	10
Health Assets.....	11
Assets in the Community .....	12
Population Health Management .....	12
.....	13
Ward Members.....	17
Health and Wealth .....	18
Deprivation .....	18
Wealth Inequalities .....	20
Foodbank Insight.....	20
Citizens Advice Bureau .....	21
Employment .....	22
Child Development .....	25
Education.....	25
Obesity .....	25
Pupil Lifestyle Survey.....	26
Health Inequalities .....	26
Life Expectancy.....	26
Long Term Health Conditions.....	27
Alcohol Intake .....	28
Physical activity.....	31
Community Information .....	32
Population and Diversity.....	32
Housing .....	33
Anti-social Behaviour.....	34
Vulnerable Victims.....	35
Loneliness and Isolation .....	35
Community Insight .....	36
Appreciative Inquiry .....	36
Community Investment .....	38
Doncaster Talks .....	39

.....	39
References .....	40
Well Doncaster Annual reports .....	40
Mosaic Data .....	40
Acorn profiles .....	40
Census Data.....	41
Public Health Data.....	41
Interactive Map.....	42
Employment .....	42
References .....	42

## One Page Summary

This report focuses on the community of Bawtry & Austerfield which is part of the Rossington & Bawtry ward in the South of the City. It has a population of 4,000 with 1,900 households. Bawtry has an Index of Multiple Deprivation (IMD) Score of 11.9 and ranked 78/88 communities, and Austerfield has a score of 16.8 ranking 66/88 indicating they are relatively affluent communities. There are many business assets and transport links and is generally perceived to be an area of affluence, however there are pockets of deprivation with high levels of social housing which may have previously been overlooked. These areas must be considered when addressing health inequalities.

Many residents in the ward experience income deprivation, significantly higher than Doncaster and England. Similarly a high percentage of residents in the ward access Universal Credit. A significantly high number of children are currently living in poverty in the Rossington & Bawtry Ward compared to Doncaster and England and this is likely to be a significant contributing factor of poor child development and lower educational levels. A high number of children are overweight or obese at year 6.

Although Residents who have no qualifications (21.2%) is higher than Doncaster (22.7%) and England (18.1%). Similarly those who are qualified to level 4 and above (31.4%) is higher than Doncaster (22.7%) and but lower than England (33.9%). It is vital to consider how poverty can be mitigated through actions that support the community and improve the health of its residents.

Residents in Rossington & Bawtry have a significantly shorter life expectancy than the average person in Doncaster or England. The biggest inequality can be found in healthy life expectancy. This is the number of healthy years someone is expected to enjoy. In the Rossington & Bawtry ward, residents are expected to enjoy approximately 5.1 fewer healthy years before they experience a health condition which affects their daily life compared to the Doncaster average.

The percentage of people in the ward with a long-term limiting illness is significantly higher than that of Doncaster and England with deaths from circulatory disease and those being the leading cause of death. A large percentage of residents live with conditions related to poor lifestyle choices, such as smoking, binge drinking and low levels of physical activity.

Bawtry and Austerfield has an aging population, with a high proportion of individuals over 65 years of age, with a high percentage of the residents being economically inactive. There are certain streets in Bawtry and Rossington which are deprived in 3 dimensions and have high levels of socially rented housing.



# Assets

## Asset Maps

Bawtry & Austerfield is a relatively rural community and is considered an affluent market town with many thriving local businesses, particularly in the service sector. It should be noted that these maps are a starting point in understanding the community and that further.

### Business Assets

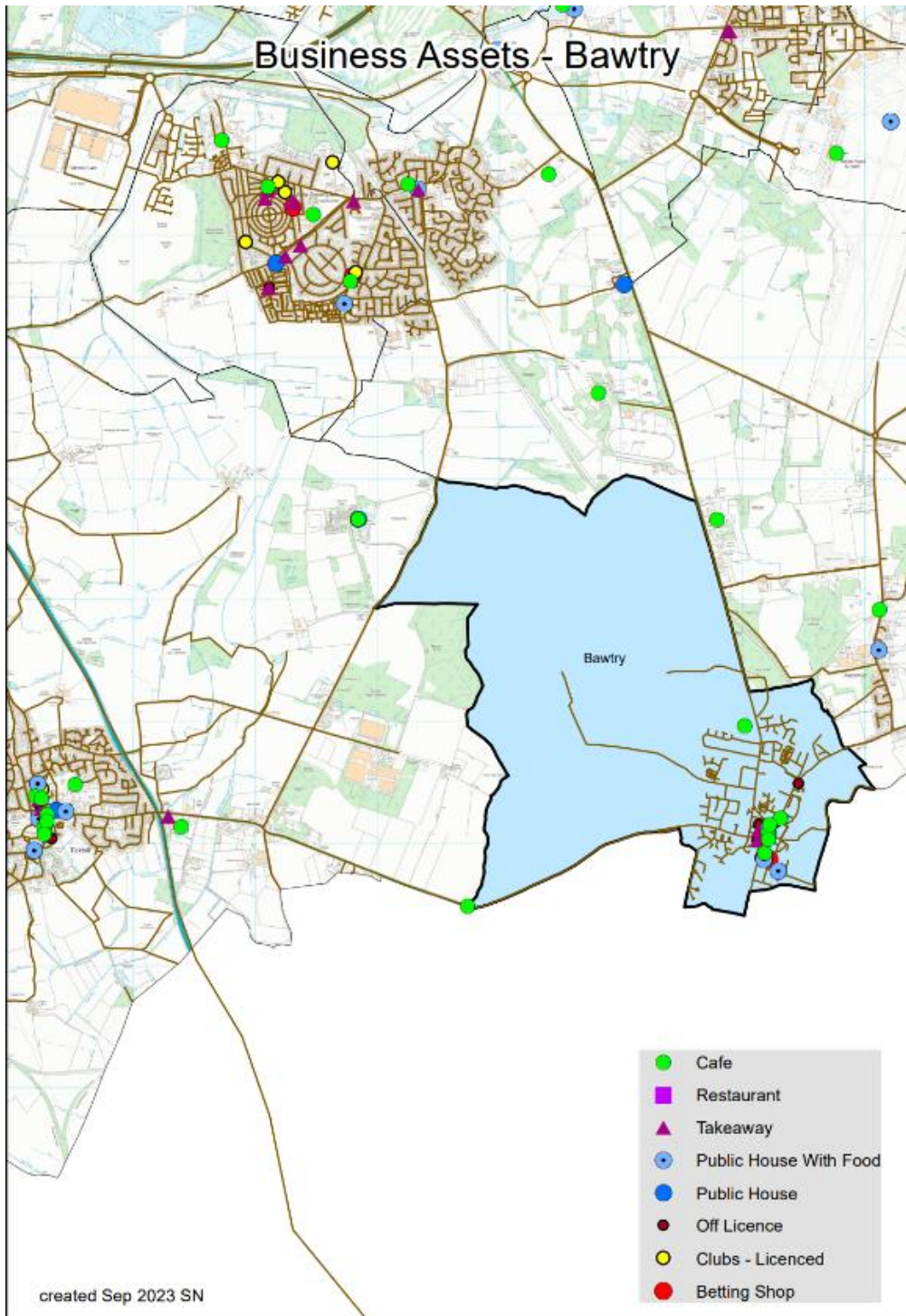


Figure 1. Business assets

## Community Assets

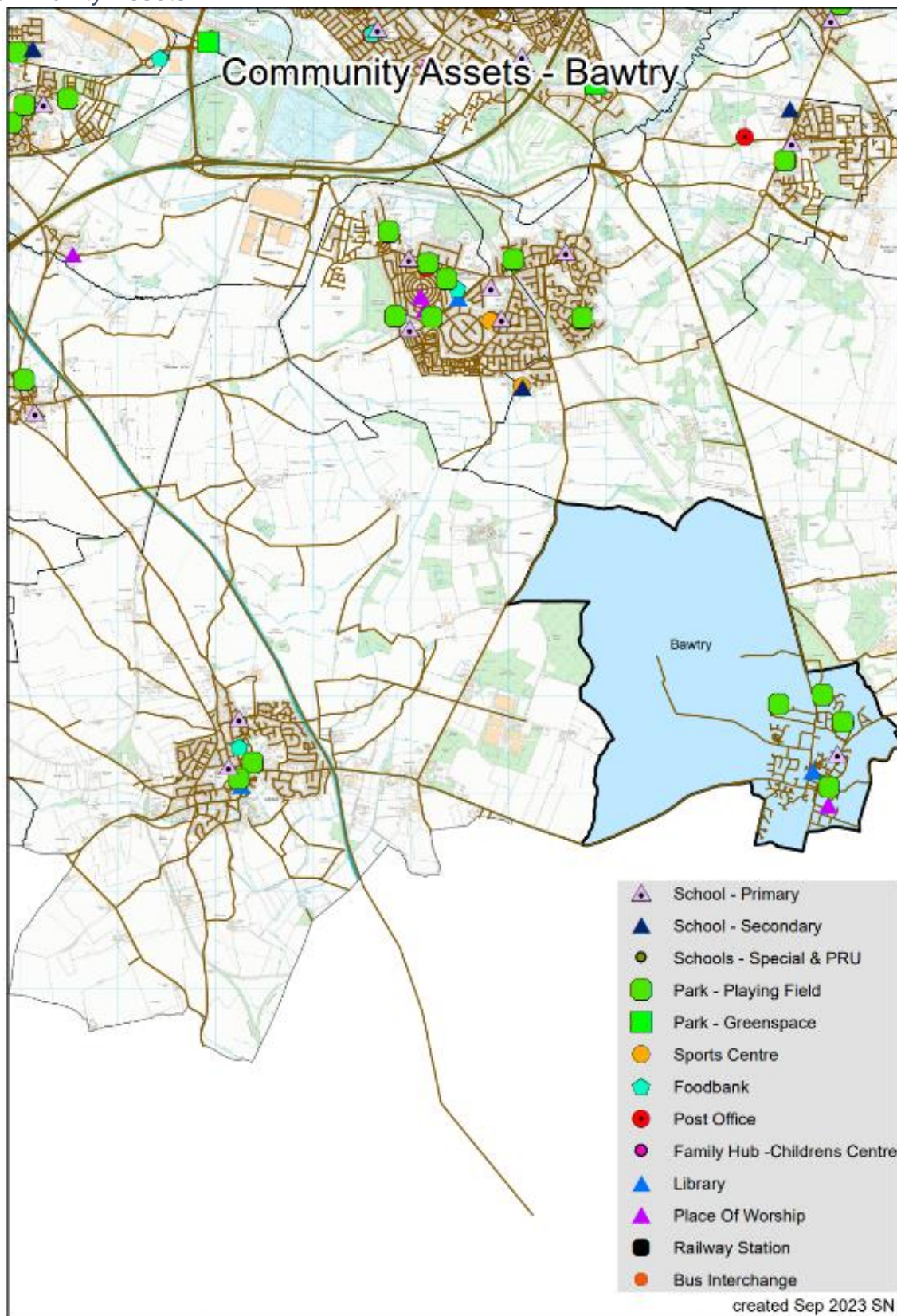


Figure 2. Community assets

Health Assets

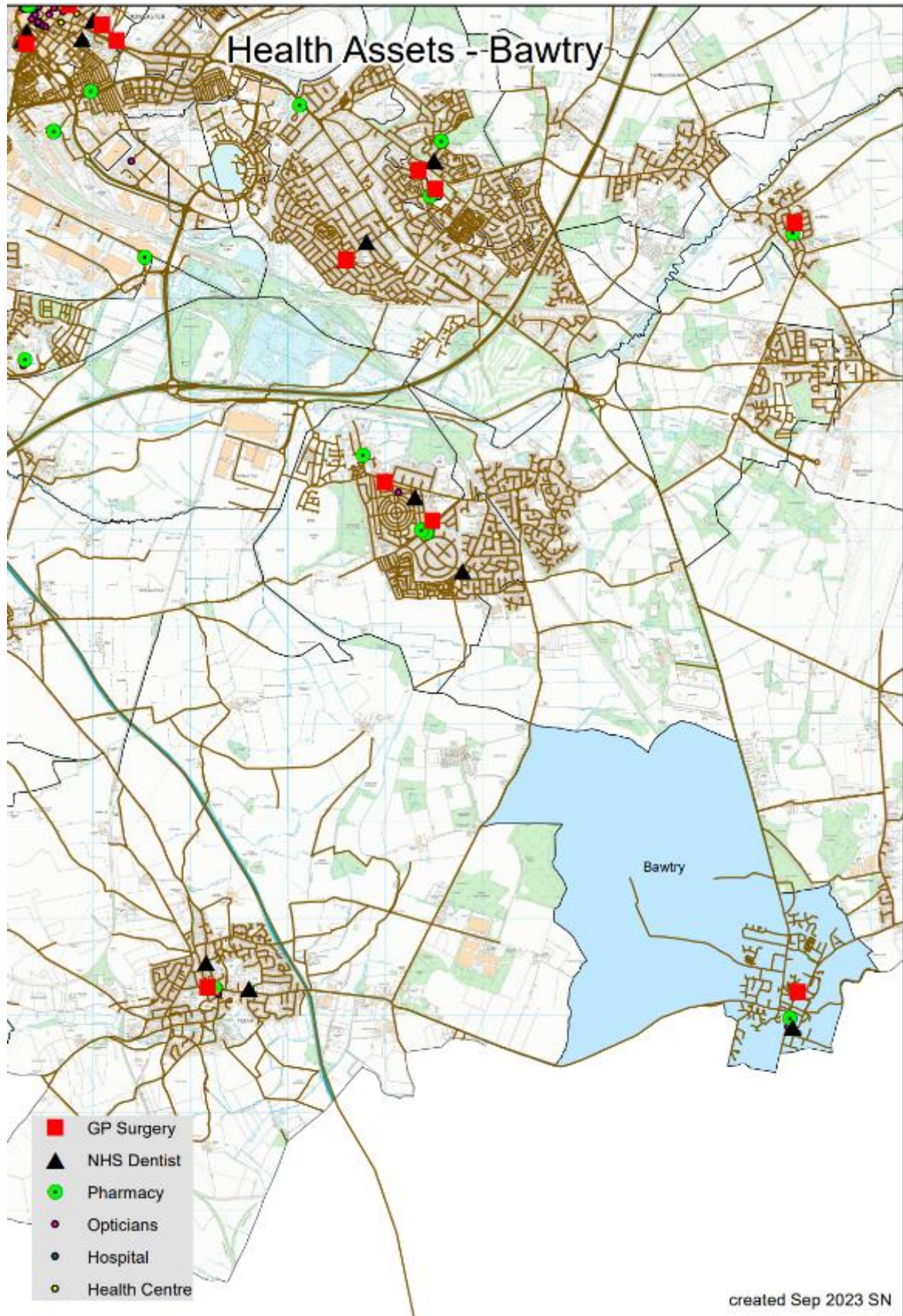


Figure 3. Health assets

It is recognised that work is needed in the community to expand the understanding of who, how and what is accessed in the area. Greater knowledge of the identity of each community/ward will allow a more appropriate and effective response to community needs.

## Assets in the Community

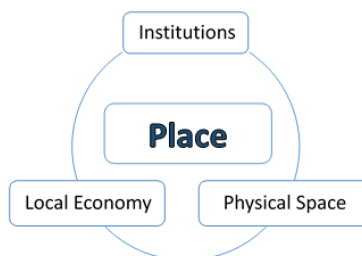
### Population Health Management

It is vital to understand the effect and direction the pandemic and cost of living crisis is having on community organisations in the ward so that appropriate and targeted support can be offered, and work can be implemented to manage any gaps or risks associated with changes. To support the former, Well Doncaster officers undertake regular population health management insight with community organisations in Bentley, identifying their current status and needs, and work with each group and partners to meet their goals. This is a living document and will be updated and adapted as needs are met and change. If you would like more detail on this, please contact [welldoncaster@doncaster.gov.uk](mailto:welldoncaster@doncaster.gov.uk)

As part of a population health management approach, the following assets have been identified and themed around place and people:

<b>INDIVIDUALS</b> (Key individuals in the community)	<b>ASSOCIATIONS</b> (Local groups / clubs)
<p><b><u>Ward Members:</u></b></p> <ul style="list-style-type: none"> <li>• Councillor Bob Anderson</li> <li>• Councillor Rachael Blake - Involved in community Group here to Help.</li> <li>• Councillor Barry Johnson</li> </ul> <p><b><u>Parish Councillors</u></b></p> <ul style="list-style-type: none"> <li>• Eliza Austin</li> <li>• James Brindley</li> <li>• Doug Cartwright</li> <li>• Alan Cropley</li> <li>• Alan Claypole</li> <li>• Ivor Greer</li> <li>• Peter Holland</li> <li>• Diana Kirby</li> <li>• David Kirkham</li> <li>• John Linsley</li> <li>• Terry Reddick</li> <li>• George Scott</li> <li>• Sandy Young</li> </ul> <p><b><u>Clerk</u></b></p> <ul style="list-style-type: none"> <li>• Angela Harrison</li> </ul>	<p><b><u>Sports Clubs:</u></b></p> <ul style="list-style-type: none"> <li>▪ Bawtry Cricket Club</li> </ul> <p><b><u>Children:</u></b></p> <p><b><u>Other:</u></b></p> <ul style="list-style-type: none"> <li>▪ Bawtry Community Library</li> <li>▪ Bawtry Phoenix Theatre</li> <li>▪ The New Hall Bawtry, (Owned by Bawtry Town Council)</li> </ul> <p><b><u>Community Groups</u></b></p> <ul style="list-style-type: none"> <li>▪ Bawtry Here to Help (Supported by Cllr Blake)</li> <li>▪ Bawtry &amp; Austerfield Health &amp; Wellbeing Group (Facebook)</li> </ul> <p><b><u>Facebook groups</u></b></p> <ul style="list-style-type: none"> <li>• Austerfield Study Centre</li> </ul>

<p><b><u>Parish Council</u></b></p> <ul style="list-style-type: none"> <li>• Lesley Cox</li> <li>• John Goodhall</li> <li>• Mathew Kallaur</li> </ul> <p><b><u>Clerk</u></b> Sarah Youngman</p> <p><b><u>Police, Community Support Officers:</u></b></p> <ul style="list-style-type: none"> <li>• Sargent A Luscombe</li> </ul> <p><b><u>Professionals:</u></b></p> <ul style="list-style-type: none"> <li>• Dawn Lawrence – Locality Lead</li> <li>• Steve Thomas – Area Manager</li> <li>• Donna Flicker - Stronger Communities Co-ordinator</li> </ul>	<ul style="list-style-type: none"> <li>• Austerfield Adult Wellbeing Group</li> <li>• Bawtry &amp; Austerfield Health &amp; wellbeing Group</li> </ul>
---	--



<b>INSTITUTIONS</b> (Schools / colleges etc.)	<b>PHYSICAL SPACE</b> (Parks, car parks etc.)	<b>LOCAL ECONOMY</b> (Local profit businesses)
<p><b><u>Schools:</u></b></p> <ul style="list-style-type: none"> <li>▪ National Horseracing College.</li> <li>▪ Bawtry Mayflower Primary School</li> </ul> <p><b><u>Religion:</u></b></p> <ul style="list-style-type: none"> <li>• Redeemed Christian Church of God</li> <li>• St Nicholas Church</li> <li>• Bawtry Methodist Church</li> <li>• Bawtry Community Church</li> </ul> <p><b><u>Medical:</u></b></p>	<p><b><u>Green Space:</u></b></p> <p>Wharf Street</p> <ul style="list-style-type: none"> <li>▪ toddler and junior play areas</li> <li>▪ multi-use games area</li> </ul> <p>playing field</p> <ul style="list-style-type: none"> <li>▪ teen sheltered seating</li> </ul> <p>Brantingham Gardens</p> <ul style="list-style-type: none"> <li>▪ toddler and junior play areas</li> <li>▪ playing field</li> <li>▪ woodlands</li> </ul>	<p><b><u>Food and Drink</u></b></p> <ul style="list-style-type: none"> <li>▪ The Crown Hotel, Bar &amp; Restaurant</li> <li>▪ The Ship Inn</li> <li>▪ Feast Of Bawtry</li> <li>▪ Bull House</li> <li>▪ Bawtry's Pizzeria &amp; Steakhouse</li> <li>▪ Bawtry's Bar &amp; Brasserie</li> <li>▪ The Blind Librarian</li> <li>▪ Cooplands</li> <li>▪ 31 Market place Cocktail</li> </ul>

<ul style="list-style-type: none"> <li>▪ The Mayflower Medical Practice.</li> <li>▪ Bawtry &amp; Blyth Medical</li> <li>▪ Bawtry Dental Practice</li> <li>▪ Bawtry Chiropractic</li>   <li>▪ The Aesthetic Medics</li> <li>▪ Bawtry Dental, Aesthetics &amp; Implant Clinic</li> <li>▪ Weldricks Pharmacy</li> </ul>	<p>Malham Close</p> <ul style="list-style-type: none"> <li>▪ toddler or junior swing frame</li> </ul> <p>Gresley Avenue</p> <ul style="list-style-type: none"> <li>▪ toddler and junior play areas</li> <li>▪ playing field</li>   <li>▪ Bawtry Forest</li>   <li>▪ Bawtry Viaduct</li> </ul> <p><b>Austerfield Study Centre</b> – Outdoor Education centre &amp; community Hub</p>	<p>Bar Bistro &amp; Creperie</p> <ul style="list-style-type: none"> <li>▪ China Kitchen</li> <li>▪ The Turnpike</li> <li>▪ The Market Bar</li> <li>▪ Lancers Restaurant</li> <li>▪ Ziniz Restaurant &amp; Wine Bar</li> <li>▪ Gray Rooms</li> <li>▪ Dower House</li> <li>▪ Emilio's Italian Cuisine</li> <li>▪ Magenta Tea Rooms, (Located in The Court Yard Shopping Centre).</li> <li>▪ El Toro Restaurant</li> <li>▪ The White Hart</li> <li>▪ The Ship at Bawtry</li> <li>▪ China Rose</li> <li>▪ The Little Deli Bawtry</li> </ul> <p><b><u>Shops &amp; Supermarkets</u></b></p> <ul style="list-style-type: none"> <li>▪ Womacks Of Bawtry</li> <li>▪ Carlson &amp; Davies Fine Gidts &amp; Chocolates</li> <li>▪ Teasdales bakers</li> <li>▪ Today's Local</li> </ul>
--	---	--

		<ul style="list-style-type: none"> <li>▪ Premier Bawtry Convenience store</li> <li>▪ Pastimes &amp; Presents</li> <li>▪ Sainsbury's Local</li> <li>▪ MACE Convenience Store</li> <li>▪ Bawtry Flowers</li> <li>▪ Time For Diamonds</li> <li>▪ ETC</li> <li>▪ And She Knows LTD</li> <li>▪ Yasmine Boutique</li> <li>▪ Cielo</li> <li>▪ Incognito</li> <li>▪ Bawtry Shoe Company</li> <li>▪ Olivia-Jane</li> <li>▪ Beckham &amp; Burrell LTD</li> <li>▪ Déjà vu</li> <li>▪ The Tasting Note</li> <li>▪ Si Si's Fashion</li> <li>▪ Trafalgar House</li> <li>▪ Velvet</li> <li>▪ Charlotte Wilcox Cake Design</li> <li>▪ Robinsons Of Bawtry</li> <li>▪ Bawtry Plastic &amp; DIY Centre</li> <li>▪ Graham Hodgett Interiors LTD</li> </ul> <p><b>Hair &amp; Beauty</b></p>
--	--	---

- The gentleman's Retreat
- Rubies Hair Boutique
- The Nail Gallery

**Other Businesses**

- Bawtry Paintballing
- Bawtry Hall , Wedding venue
- Yorkshire Caravans & The classic Café
- ESSO Corner Garage
- Marshalls Garage
- Knarly Motor Co
- Fine & Country Estate Agents Bawtry
- Gally Hills Boarding Kennels & Cattery

**Other**

- Mayflower Animal Sanctuary



## Ward Members

The Rossington and Bawtry ward has three ward members who were elected in 2021.



Councillor Bob  
Anderson

Rossington and  
Bawtry  
Labour



Councillor Rachael  
Blake

Rossington and  
Bawtry  
Labour  
Portfolio Holder  
for Children's  
Social Care,  
Communities and  
Equalities



Councillor Barry  
Johnson

Rossington and  
Bawtry  
Labour



## Health and Wealth

### Deprivation

Health inequalities are avoidable differences across the population, and between different groups within society. Health inequalities arise from the conditions in which we live, work and play. These conditions influence our opportunities for good health, how we think, feel and act, therefore shaping our health and wellbeing. Evidence shows that people living in our most deprived areas face the worse health inequalities in relation to health access, experiences and outcomes. Deprivation covers a range of issues and refers to unmet needs caused by a lack of resources, including but not limited to finances, housing and education. It is measured in different ways including the Indices of Multiple Deprivation (IMD). Bawtry remains as one of the most affluent areas in Doncaster with an index of multiple deprivation of 11.9 similar to Austerfield 16.7 and are ranked 78<sup>th</sup> & 66<sup>th</sup> respectively out of 88 communities in Doncaster. However there are pockets of deprivation where health inequalities are present.

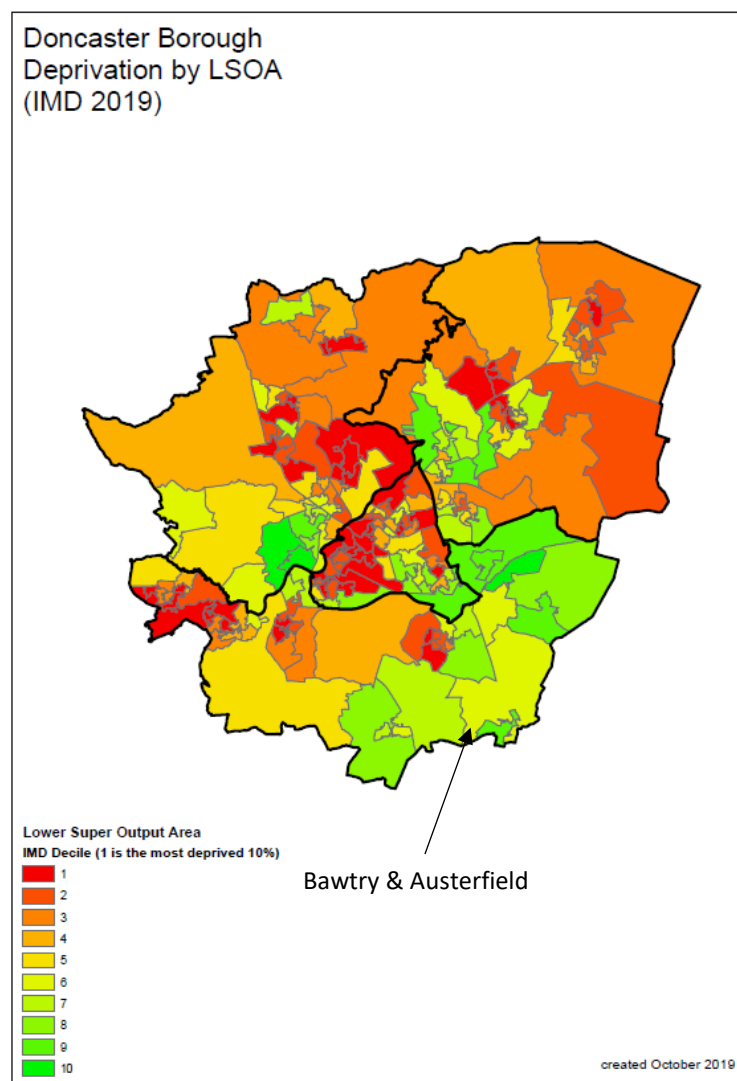


Figure 4. *Doncaster Index of Multiple Deprivation changes between 2015-2019*

The 2021 Census data has been used to produce estimates that classify households in England and Wales by four dimensions of deprivation: employment, education,

health and disability and household overcrowding. The Census 2021 data breaks down this information into household deprivation at a community level, with New Rossington compared to Doncaster and England. 53% of households in Bawtry & Austerfield are not deprived in any dimension which is significantly higher than Doncaster (43.7%) and England (48.4%). Similarly, 11.3% of households are deprived in two dimensions lower than Doncaster (16.7%) and England (14.2%) and households deprived in three dimensions (2.7%) are lower than Doncaster (4.6%) and England (3.7%). However, there are areas of Bawtry & Austerfield which are deprived in 4 dimensions – particularly streets surrounding North Avenue, Central Drive and Gresley Avenue as can be seen below. Although this is a small percentage, these areas should be considered in reducing health inequalities.

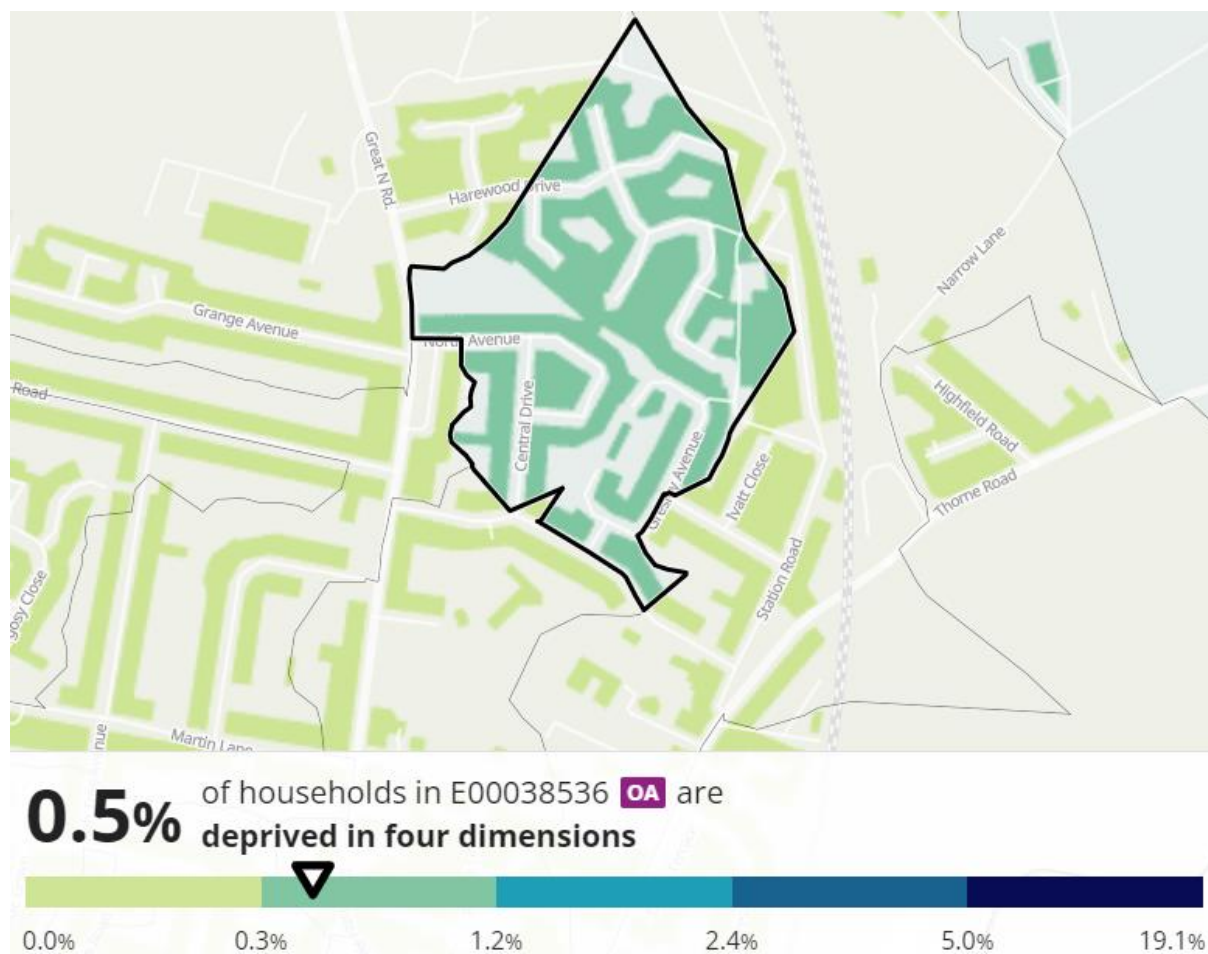


Figure 5. Households deprivation in four or more dimensions (ONS, 2021)

Furthermore, a high proportion of residents in the ward are suffering income deprivation (15.0%), higher than England (12.9%) along with high levels of socially rented housing around the same streets (27.7%) compared to Doncaster (17.0%) and England (17.1%) which may be a contributing factor and should be considered when addressing health inequalities. These streets are also densely populated and are at risk of overcrowding with 28.6% of households having 4 or more people in it.

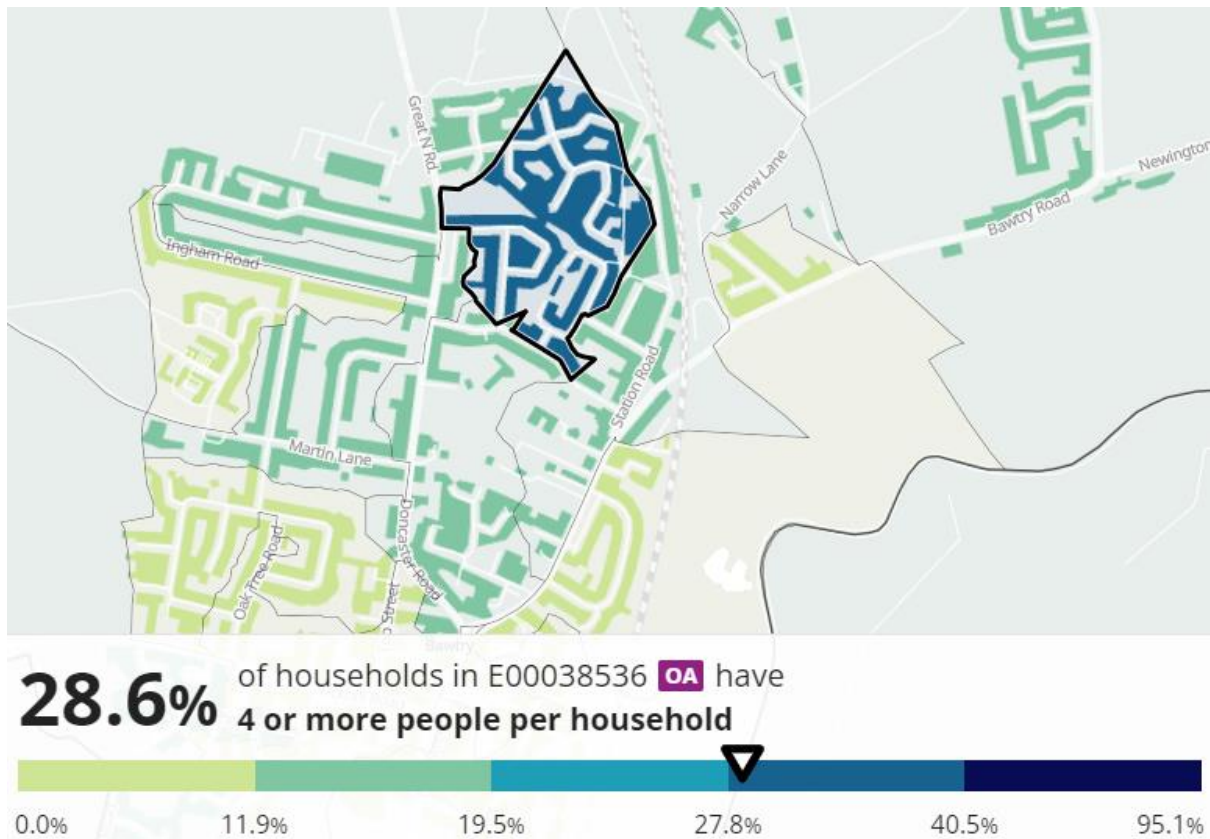


Figure 6. Number of individuals residing in households

### Wealth Inequalities

A significantly high proportion of Bawtry residents are experiencing income deprivation (15.0%), significantly higher than England (12.9%) and consistent with the reported 2021 data. 21.6% of children are living in poverty, similar to Doncaster (22.7%) and England (17.1%). Contrastingly, 13.7% of older people are also living in poverty, lower than Doncaster (15.9%) and England (14.2%). These could be attributed to Bawtry's abundance of medical and health facilities, well-established community transport links.

Fuel poverty, defined as a household living on a lower income not deemed reasonable enough to warm a home sufficiently, affects 18.0% of adults in Bawtry, similar to Doncaster (18.8%) and significantly higher than England (13.2%). The recent cost of living crisis, including rising fuel costs and inflation, may be contributing to this issue.

Another measure indicating deprivation is the number of cars in each household, which should be considered when evaluating health interventions between communities. Bawtry has a high proportion of households 3 or more cars or vans (12.5%) compared to Doncaster (8.1%) and England (9.1%). Overall indicators of deprivation, compared to England, can be seen in the illustration below.

### Foodbank Insight

There are 5 foodbanks located in the South Locality and one in the Rossington and Bawtry Ward. The most common household types needing support are Individuals, followed by families. The South locality ranks as 2<sup>nd</sup> in relative level of support

compared to the rest of the city, highlighting the need to address poverty, food poverty and low income. Initiatives such as The Bread and Butter Thing, located in the South at Mexborough Community HUB and aims to transition people out of food poverty.

Top reasons for accessing support include the Cost of Living Crisis, debt, and low income which is consistent with the Rossington and Bawtry Ward experiencing income deprivation and high levels of universal credit claimants.

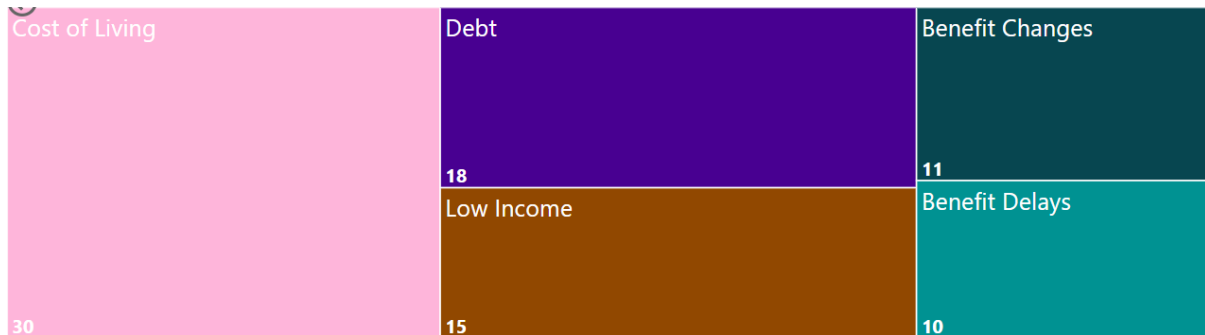


Figure 7. Top reasons for accessing foodbank support in Rossington and Bawtry

Rossington Arks and Crafts food train is located at the Holmescarr Centre in Rossington and is the closest foodbank to Bawtry & Austerfield. The number of children accessing support has increased, the main reasons for accessing are cost of living and debt and the relative level of foodbank support has increased significantly throughout 2023. Highlighting the need to address poverty, income deprivation in the community.

### Citizens Advice Bureau

Citizens Advice Bureau (CAB) is a network of charities that gives people the knowledge and confidence they need to find their way forward, whoever they are, and whatever their problem.

In 2022/23 financial year, the top issues for clients with postcodes within the Rossington & Bawtry Ward were predominantly around money. This data is consistent with the Rossington & Bawtry Ward having areas of deprivation, with many households suffering from income deprivation, low paying jobs and low levels of education particularly in the areas of high social housing in Bawtry. Work around these factors must be considered when addressing health inequalities.

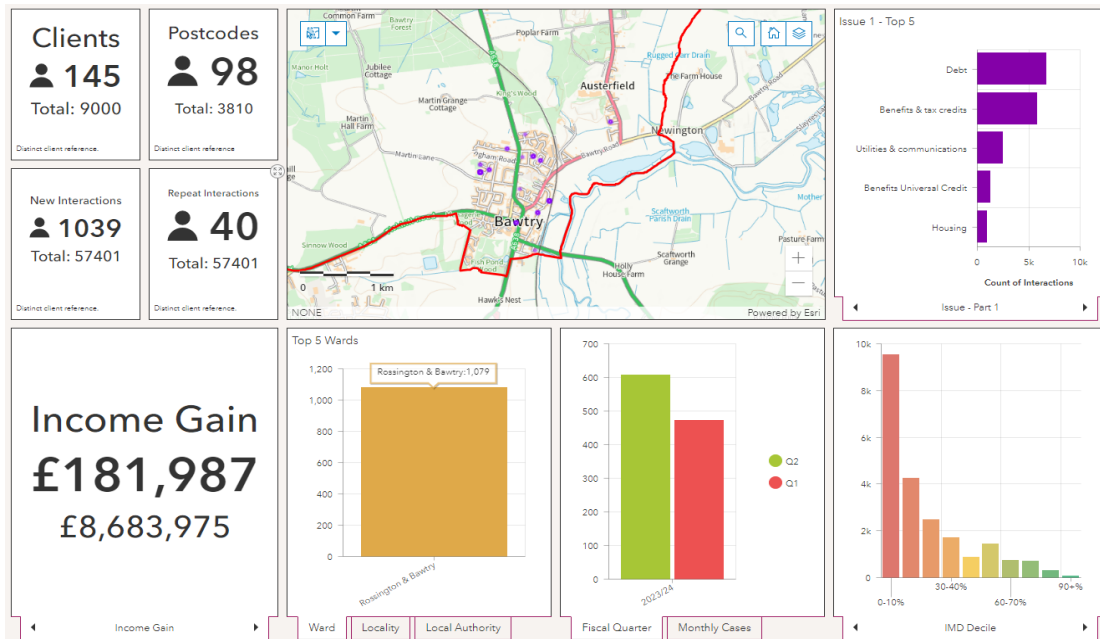


Figure 8. interactions with Citizens Advice Doncaster Borough (CADB) during fiscal year 2023/24

### Employment

Bawtry and Austerfield unemployment rate amongst working age adults is 2.3% in lower than Doncaster (6.1%) and England (5.0%).

19.1% of residents aged 16 and over who are not in employment have never worked, significantly lower than Doncaster (27.2%) and England (25.6%). However this figure is particularly high in the North Avenue and Argosy Close area where 25.5% and 25.3% respectively of residents who aren't in employment have never worked, the highest in the community.

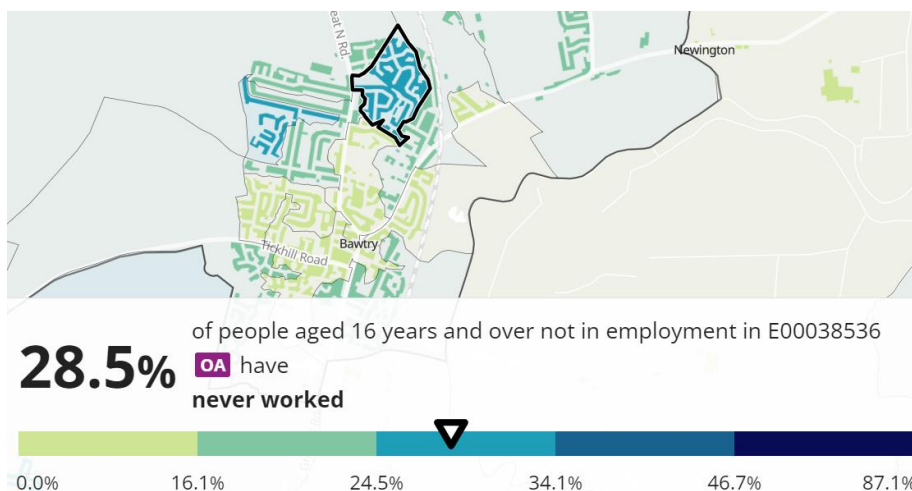


Figure 9. rates of people aged 16 years and over not in employment (ONS, 2021)

In Bawtry & Austerfield of those who are in work the majority work full time (56.4%), however this lower to figures for Doncaster (60.7%) and England (59.1%) where-as a

higher percentage work part time 29.7% higher than Doncaster (28.9%) and England (29.8%).

Occupation figures below highlight those in Elementary Occupations (8.1%) are significantly lower than Doncaster (16.5%) and England (10.5%) along with Process, Plant & Machine Operatives (5.9%), lower than Doncaster (10.3%) and England (6.9%). Traditionally these roles are low skill and low pay roles. Furthermore, 20.2% are employed in Professional Occupations, higher than Doncaster (12.8%) and similar to England (20.3%), usually requiring higher skill levels, education and receive higher pay.

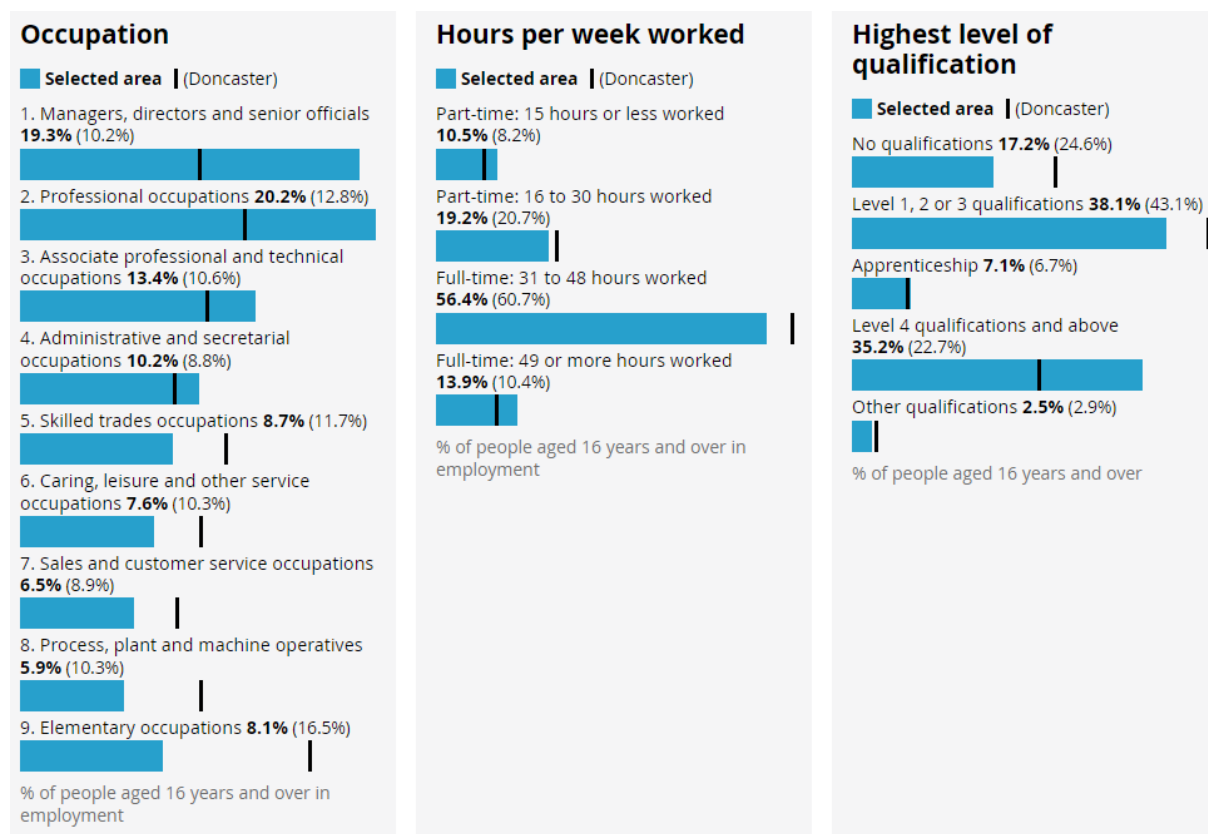


Figure 10. Occupation, hours per week and highest level of qualification for residents in Bawtry (ONS, 2021)

A small percentage of people aged 16 years and older have no qualifications (17.2%) compared to Doncaster (24.6%) and England (18.1%). However streets such as Argosy Close (27.3%) have particularly high levels of residents with no qualifications. This should be considered when looking to address health inequalities.

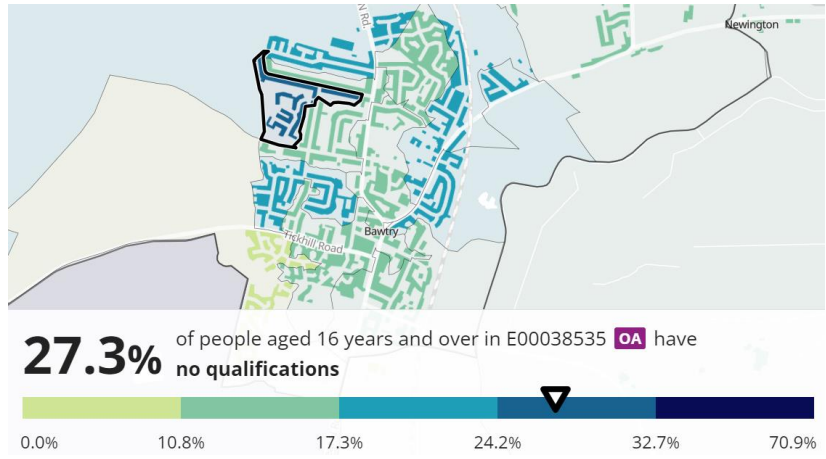


Figure 11. rates of residents with no qualifications (ONS, 2021)



## Child Development

### Education

Children in Bawtry have lower child development at age 5 than the borough's average. In 2017, 58.2% of 16-year-olds achieved 5 A\*-C at GCSE level in Bawtry, compared to the borough's average of 49.1%. It's essential to note that children attending school may not necessarily be residents of the ward and could be from Bawtry, Old Rossington, or New Rossington.

In Bawtry & Austerfield, pupils' expected grades at Key Stage 2 and GCSE can be seen below, compared to Doncaster and England. At KS2, each pupil is assessed in reading, writing, and maths, showing the percentage of pupils who have reached the expected standard in all three subjects. At GCSE (KS4), each pupil is given an Attainment 8 score out of 90, based on their 8 best GCSE grades, including English, maths, and at least 3 other traditional academic GCSEs. The figure below shows the percentage of pupils reaching the expected standard and is consistent with the low levels of qualifications in Bawtry; therefore, access to the labour market may be limited. Work around increasing this number should be considered.

Table 1. School attainment rates in Bawtry and Doncaster

	GCSE: Attainment 8						KS2: % reaching the expected standard in RW&M					
	2023		2022		2019		2023		2022		2019	
	Pupils	Score	Pupils	Score	Pupils	Score	Pupils	Exp+	Pupils	Exp+	Pupils	Exp+
NATIONAL				48.8		46.7		60%		59%		65%
DONCASTER				45.2		44.0		55%		55%		60%
Bawtry			38	61.8	41	54.0	32	63%	52	56%	33	61%
New Rossington			100	42.9	97	44.3	137	59%	141	62%	138	64%
Old Rossington			54	58.3	41	59.4	40	73%	51	75%	66	80%

### Obesity

In Bawtry, children's weight is a priority, considering that 26.2% of children were overweight or obese at reception age in 2021. This has now increased to 29.6%, higher than the average of Doncaster (26.1%) and England (22.6%), but in line with the local growth trend. In 2021, this figure increased to 36.7% at year 6 but is now reported as 39.3%, higher than Doncaster (38.3%) and England (35.8%).

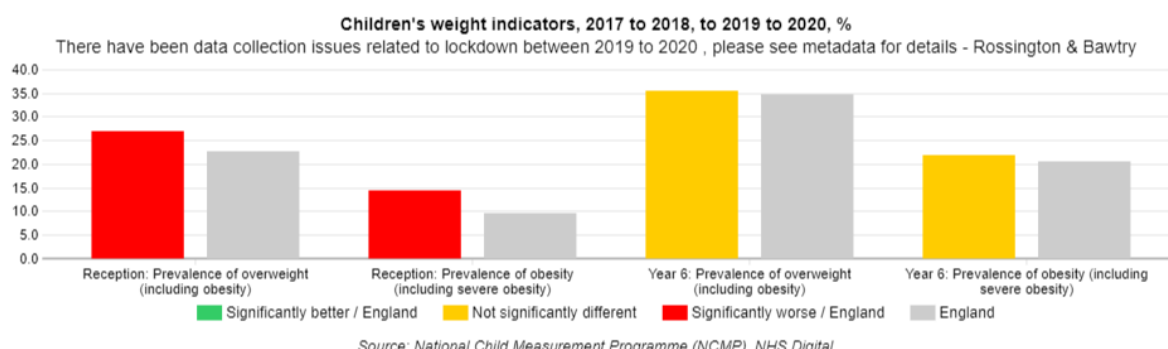


Figure 12. Weight indicators from the National Child Measurement Programme (NHS)

In Bawtry & Austerfield, the prevalence of regular smokers at age 15 (7.6%) is higher than Doncaster (6.8%) and England (5.4%), and the general fertility rate, live births per 100.0 women aged 15-44, is lower (59.2) than Doncaster (62.4) and England (59.2). These figures remain the same as reported in 2021. Emergency admissions in under 5s (98.7 per 100.0) are significantly higher in Bawtry than Doncaster (91.1 per 100.0) but lower than England (140.7 per 100.0). Emergency hospital admissions for

injuries in under 15-year-olds (103.5 per 100.0) are also significantly higher than Doncaster (88.8 per 100.0) and England (92.0 per 100.0) and remain the same as 2021.

### Pupil Lifestyle Survey

The Pupil Lifestyle Survey is conducted by City of Doncaster Council to provide valuable data on children and young people's health-related behaviour through an anonymous school-based questionnaire. Data from the survey provides Doncaster-wide figures at key points in children and young people's development (KS2, 3, and 4). This profile compares the previous 2020 data with that collected most recently in 2022.

In the 2022 data, Rossington & Bawtry Ward had 112 pupils participating. 48% of participants have school dinner, lower than Doncaster (55%) and higher than 2021, indicating packed lunches may be contributing to the high levels of childhood obesity. 11% of school-aged children have free school meals, lower than Doncaster (19%) and the same as 2021. 25% have a healthy food and beverage intake, and 9% claimed to consume takeaway food most or every day (vs. 15% across Doncaster). Daily sweet and snack consumption is 71%, higher than Doncaster (58%). 95% of children reported they feel warm and comfortable at home, lower than Doncaster (97%). 93% felt able to clean themselves at home, similar to Doncaster (90%). 2021 data showed that only 76% of school children in Bawtry felt able to have a restful night's sleep; this has now increased to 78%, yet still lower than Doncaster (80%). 90% of children reported that they felt safe at home, matching Doncaster, and 88% have a nice, safe place at home or near home to play (Doncaster 87%). 68% of school children in Bawtry reported that they feel able to get involved in the wider community, which has increased compared to previous data (62%) and is now higher than Doncaster (62%).

The biggest worry for children in Bawtry is relationships (38%), considerably higher than Doncaster (19%) and the highest in the borough. Furthermore, 32% of pupils surveyed admitted to being bullied in the last 12 months, significantly higher than Doncaster (27%), and 19% have deliberately hurt someone in the last 12 months, higher than Doncaster (16%). It is important to note that the Pupil Lifestyle Survey is self-reported and was not completed by all the schools.

### Health Inequalities

#### Life Expectancy

People living in the ward have a lower life expectancy and live more of their lives in poor health than the averages of Doncaster and England. Life expectancies for men (78.2 years) and women (79.9 years) living in the Bawtry Ward are lower than the averages of Doncaster (m: 78.1, f: 81.6) and England (m: 79.7, f: 83.7)

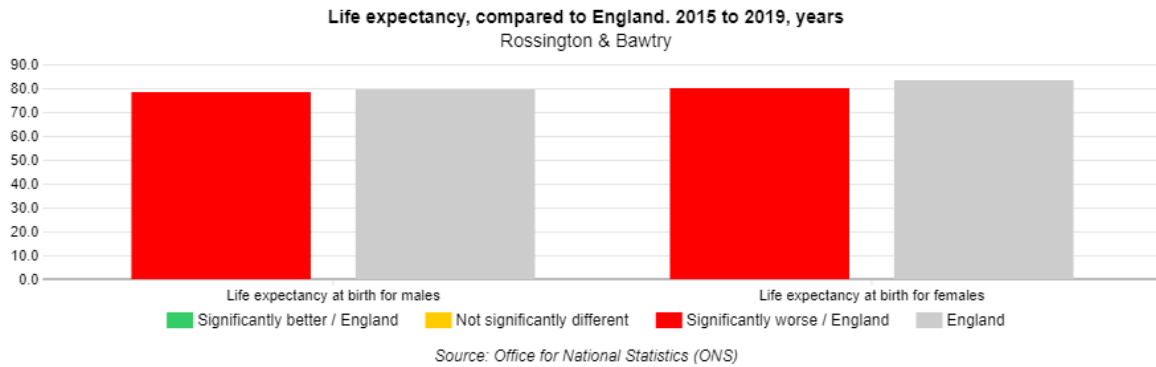


Figure 13. Life expectation in Rossington and Bawtry ward compared to England (ONS, 2021)

### Long Term Health Conditions

The infographic below shows the percentage of the population with a diagnosis of different health conditions. The prevalence of health conditions is higher in New Rossington than the rest of Doncaster. The significantly high level of emphysema, coupled with the significantly higher proportion of deaths from respiratory diseases, highlight the need to tackle the high rates of smoking within both the New Rossington community.

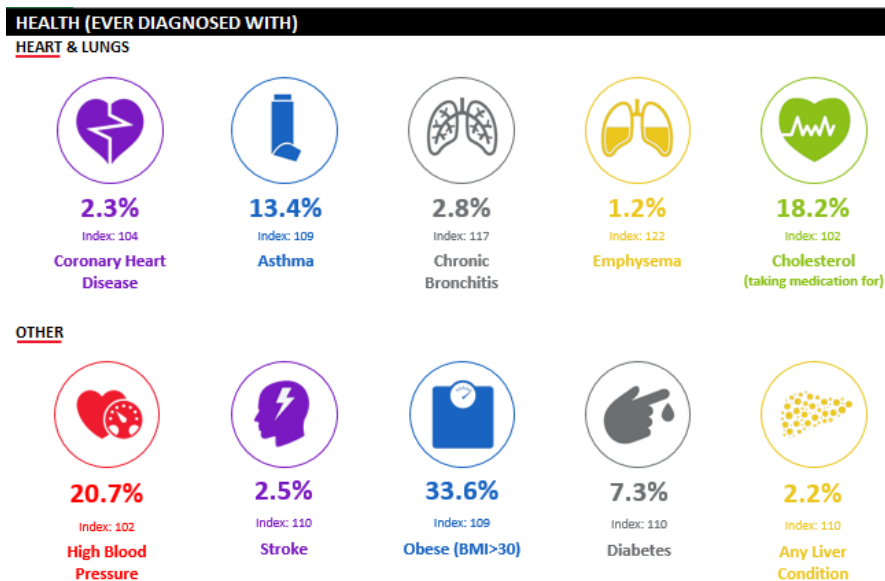


Figure 14. Long term health conditions reported in residents in Bawtry ward (2021)

The Rossington and Bawtry ward has similar levels of emergency hospital admissions for heart disease: COPD, Stroke, Heart Attacks and Coronary Heart Disease to Doncaster. However incidences of cancer are higher (113.1 per 100.0) and in particular lung cancer (166.5 per 100.0) 5<sup>th</sup> highest in the city and a smoking prevalence of 8.56% which is lower than Doncaster (19.7%).

Risk factors for heart disease, such as obesity and alcohol consumption, are also high, with 33.6% of adults classified as obese and 18.2% of adults take medication for high cholesterol. Hospital admissions for alcohol-related incidences are in line with Doncaster.

The 2021 Census data is showing the self-reported general health figures for Bawtry & Austerfield are similar to Doncaster and England.

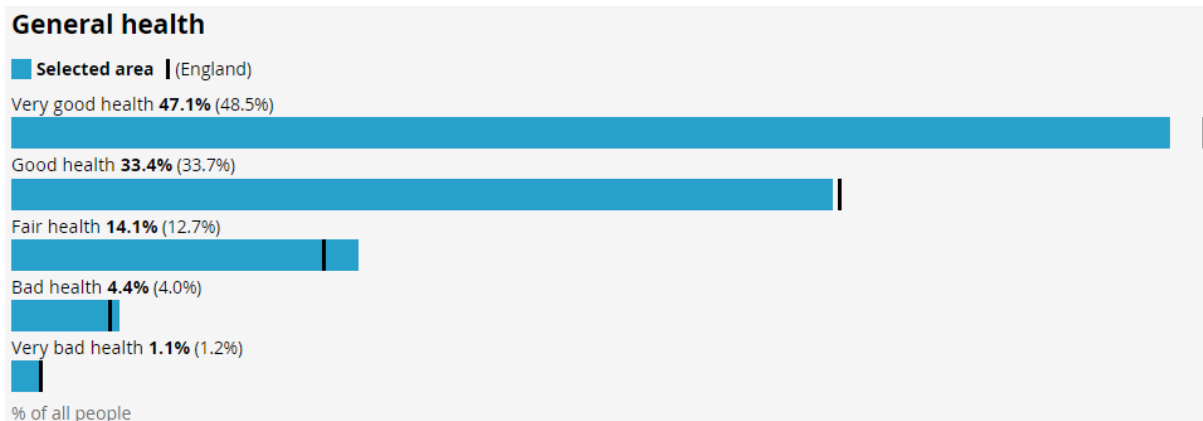


Figure 15. Self-reported levels of health in Bawtry residents (ONS, 2021)

### Alcohol Intake

In the graph below, the data at the Lower Super Output Area (LSOA) level, shedding light on disparities among communities in terms of alcohol-related hospital admissions. Both of Bawtry’s LSOA’s are below the Doncaster average suggesting people are able to self regulate alcohol consumption.

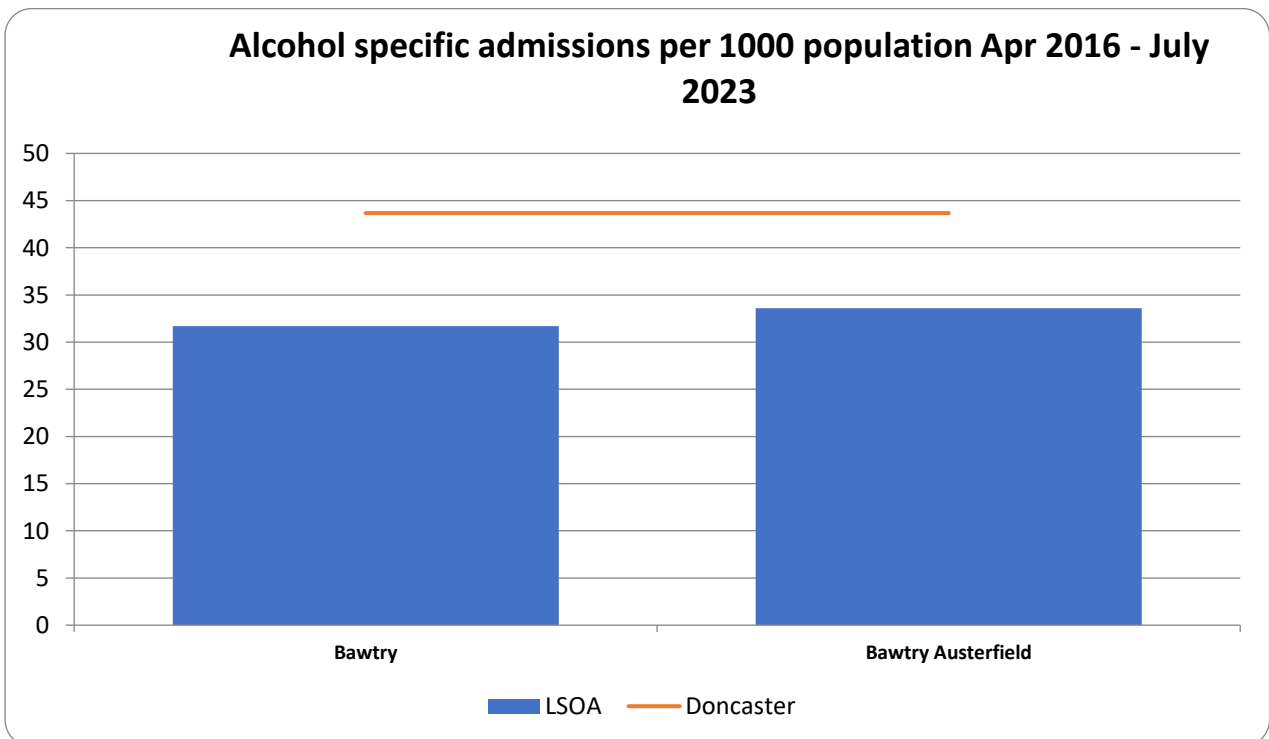


Figure 16. Alcohol specific admissions per 1000 population 2016-2023 (ONS, 2021)

## Smoking

Table 2. Patients Registered in Primary Care Network across Doncaster, England (NHS, 2023)

Practice	Sum of 15+	Sum of Smokers	Sum of Prev
The Flying Scotsman Health Centre	9671	3053	31.57%
Frances Street Medical Centre	5931	1532	25.83%
The New Surgery	6143	1447	23.56%
The Nayar Practice	4229	979	23.15%
The Ransome Practice	6749	1519	22.51%
Edlington Health Centre Practice	4010	877	21.87%
Thorne Moor Medical Practice	7867	1688	21.46%
Conisbrough Medical Practice	1377	287	20.84%
Askern Medical Practice	6441	1333	20.70%
Field Road Surgery	7840	1615	20.60%
Kingthorne Group Practice	11261	2272	20.18%
Northfield Surgery	8405	1681	20.00%
Mexborough Health Centre	4130	821	19.88%
Great North Medical Group	13539	2682	19.81%
Regent Square Group Practice	8533	1675	19.63%
Conisbrough Group Practice	9756	1906	19.54%
Don Valley Healthcare	11148	2157	19.35%
St. Johns Group Practice	7301	1373	18.81%
The Scott Practice	12879	2327	18.07%
The Rossington Practice	6766	1207	17.84%
The Lakeside Practice	7261	1280	17.63%
Denaby Medical Practice	2921	509	17.43%
West End Clinic	3706	643	17.35%
White House Farm Medical Centre	5181	867	16.73%
Asa Medical Group	16707	2794	16.72%
Petersgate Medical Centre	7633	1225	16.05%
St Vincent Medical Centre	12203	1817	14.89%
The Oakwood Surgery	4797	677	14.11%
Mount Group Practice	11271	1567	13.90%
Scawsby Health Centre Practice	4850	655	13.51%
The Burns Practice	13152	1717	13.06%
Hatfield Health Centre	7785	952	12.23%
Park View Surgery	2126	238	11.19%

Dunsville Medical Centre	5268	542	10.29%
The Tickhill & Colliery Medical Practice	7447	700	9.40%
The Mayflower Medical Practice	6353	544	8.56%
Barnburgh Surgery	2044	174	8.51%
Doncaster	274681	49332	17.96%

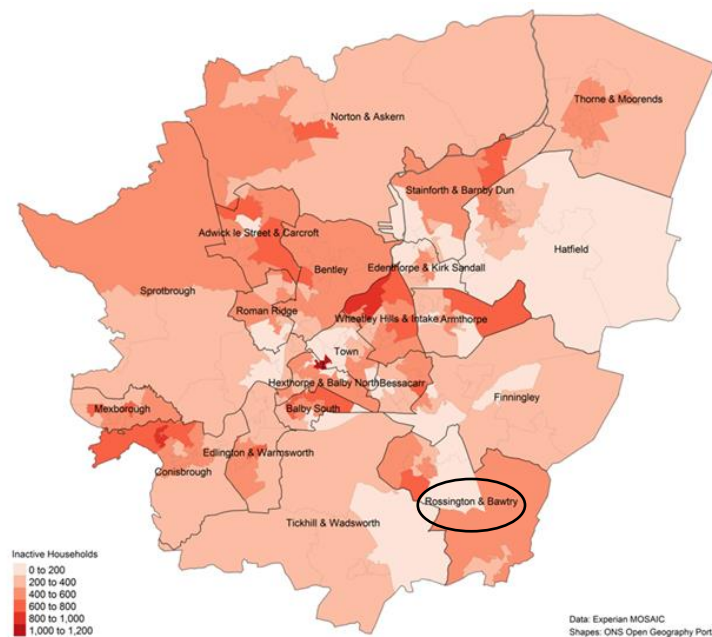
According to NHS England in 2023 (NHS England Quality and Outcomes Framework 2022-2023), there are 54584 patients older than 15 years registered patients with Doncaster South Primary Network (PCN) in of Doncaster. 9298 of those are registered as smokers. Making up 17.03% of registered patient smokers across south of Doncaster. This per centage is slightly lower than across Doncaster (17.96%).

PCN South practice, the Mayflower Medical Practice is used also by patients from Austerfield. In this practice are registered as 15+ smokers 8.56% of patients (544 out of total registered patients 15+ of 6353). This percentage is significantly lower compared to across four PCNs in Doncaster of 17.86%. Also, significantly lower than across PCN South of 17.03%. This is a second lowest per centage of registered smokers in a GP in the PCN south, and the second lowest across all PCN GPs in Doncaster (8.51%). It must be noted that data is taken from self-reported measures when signing up to GP. Residents registered at GP do not necessarily reside in the community. This may not truly reflect the prevalence of smoking in specific communities. Also, it relies on individuals self-reporting their behaviours and it does not reflect on patients residing in in the community but might be registered with a GP outside of it.

## Physical activity

Most of the information in this section is taken from Mosaic data, and more information about Mosaic can be found in the [appendix](#).

Levels of physical activity in the Rossington & Bawtry ward are low compared to the rest of the borough. This can be seen in the map below, which identifies the areas with the highest numbers of inactive households



*Figure 17. Mosaic map of Doncaster Physical Activity Levels. New Rossington is highlighted in the circle.*

Acorn data shows that 45.9% of residents have reported never engaging in moderate intensity physical activity.

## Community Information

### Population and Diversity

Bawtry and Austerfield has a population of 4,000 residents, of which 5,654 (58.2%) are of working-age. This figure is lower than the average of England but in line with the average of Doncaster. The community's overall age composition could be described as ageing, with a high proportion of residents 65+

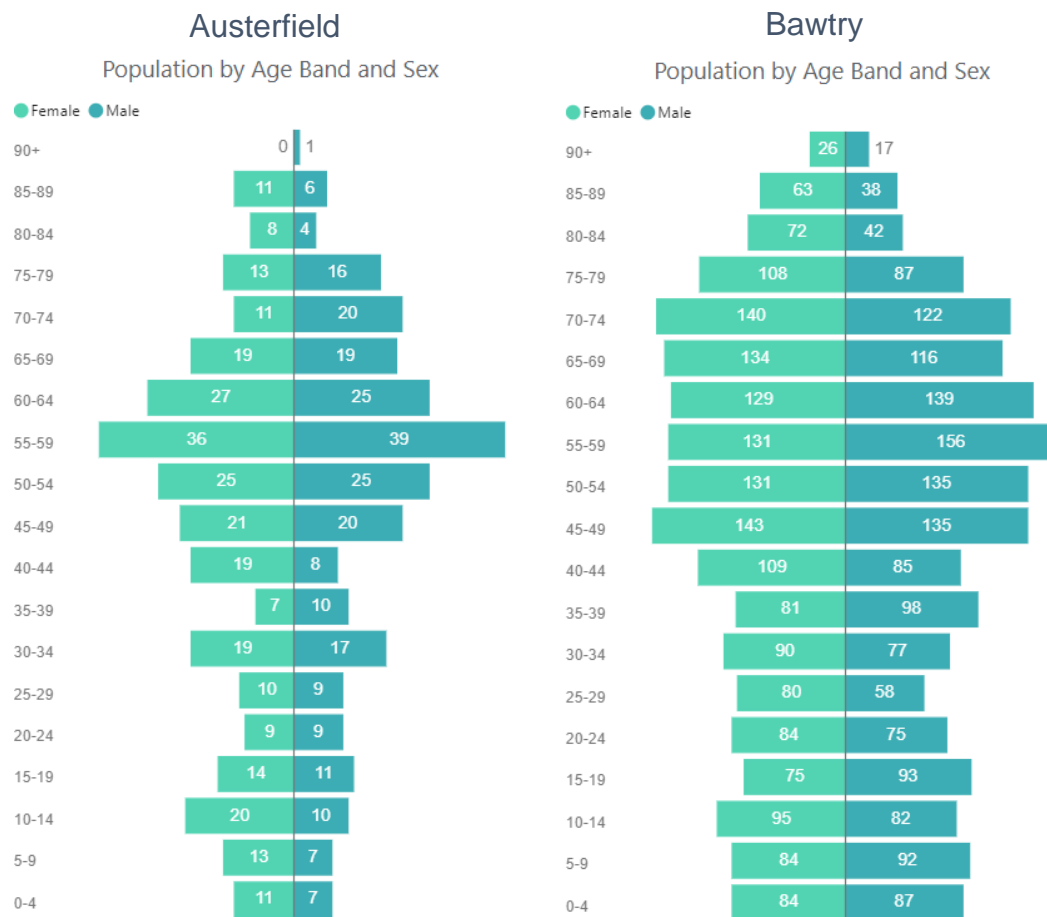


Figure 18. Age profile of Bawtry and Austerfield residents (ONS, 2021)



The community continues to be predominantly White British, with only 4% of the population being from a Black, Asian & Minority Ethnic (BAME) group. 17.7% of people identify as disabled under the Equality Act, lower than Doncaster (20.3%).

Table 3. Ethnicity groups in Rossington ward and Doncaster (ONS, 2021)

Ethnic Group	New Rossington	Doncaster	England
Asian	2.2%	2.9%	9.6%
Black	0.5%	1.2%	4.2%
Mixed / Multiple	1.0%	1.5%	3.0%
White	96%	93.1%	81.0%
Other	0.3%	1.2%	2.2%

## Housing

Housing conditions and the surrounding environment can have profound impacts upon residents' health and exacerbate health inequalities. There are around 7,800 houses in the ward, 1,900 of which are located in Bawtry (1650) & Austerfield (250). The household size figures are consistent with the ward, borough and national average with the majority having 2 people living in the household (37.1%). The majority are whole houses or bungalows (90.9%) similar to Doncaster and England.

A significant number of houses have 4 or more bedrooms (30.3%) higher than Doncaster (16.0%) and England. Whether a household's accommodation is overcrowded, ideally occupied or under-occupied is calculated by comparing the number of bedrooms the household requires to the number of available bedrooms. There are low levels of overcrowding in Bawtry & Austerfield (0.6%) when compared to the ward (2%), Doncaster (2.2%)

The Majority of households are owned outright (45.2%), significantly higher than Doncaster (33.6%) and significantly less are socially rented (9.4%) when compared to Doncaster (17.0%) and privately rented (14.9%) compared to Doncaster (19.7%).

St Leger Homes provide housing services across Doncaster. They manage over 21,000 residences who are owned by the City of Doncaster Council. High levels of social housing, with a large proportion of bungalows and terraced housing are an indicator of deprivation and associated with overcrowding, low income and can consequently affect poor levels of childhood development. The number of socially rented houses along with the number of homeless families in the ward can be seen in the table below.

Table 4. St Leger properties across Rossington and Bawtry ward

Locality	Ward	Community	Bung	Flats	Mais	s	House	Tot	Und	er	18	year	66+	Hom
South	Rossington & Bawtry	New Rossington	406	53	3	545	1007	0	625	371	6			
South	Rossington & Bawtry	Austerfield	0	0	0	6	6	0	4	2	0			
South	Rossington & Bawtry	Bawtry	42	11	0	70	123	0	74	47	0			

## Anti-social Behaviour

Stronger Communities purpose is for there to be strong, active, inclusive and resilient communities across the whole of Doncaster, effectively building on and using their strengths and assets to work in partnership to improve their quality of life and well-being, to make their neighbourhoods safe and supportive and able to tackle the issues that matter to them. The table below shows that the South has the highest number of ASB and hate crime figures in the City.

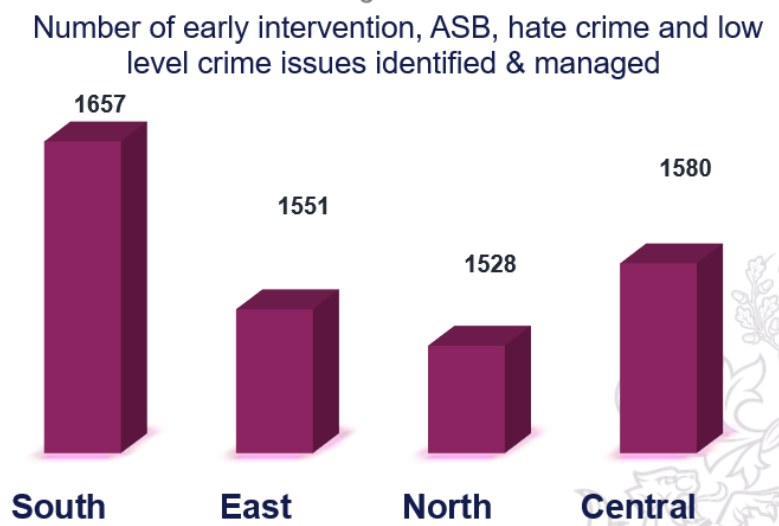


Figure 19. Number of early interventions, ASB, hate crime and low-level crime issues identified and managed at Locality level (Stronger Communities, Doncaster Council 2023/24)

Of these 1657 incidences of ASB and hate crimes, 343 occurred in the Rossington and Bawtry ward making it the third highest in the locality.

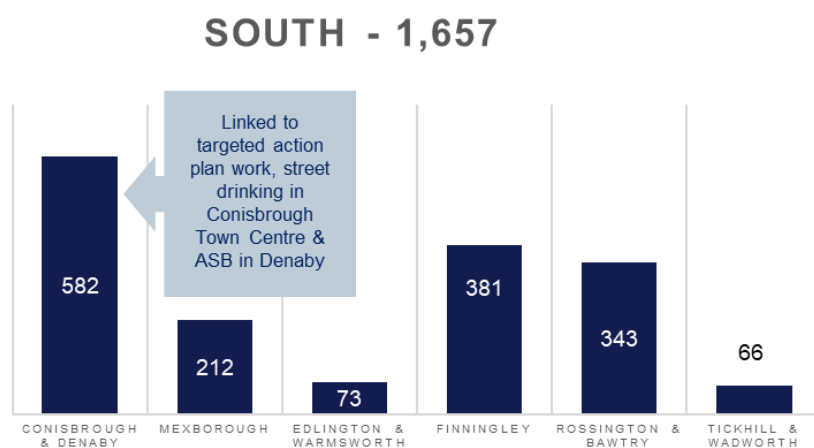


Figure 20. Number of early interventions, ASB, hate crime and low-level crime issues identified and managed at Ward level (Stronger Communities, Doncaster Council 2023/24)

## Vulnerable Victims

Across the South locality, the Stronger Communities team supported 8 vulnerable people, none of whom were from the Rossington and Bawtry ward. These numbers can be attributed to targeted working in hotspot locations across the locality and reductions in contact required in other open cases through dedicated working and addressing of vulnerabilities experienced. These numbers for both ASB and vulnerable people have been reported for quarter 1 of 2023.

## Loneliness and Isolation

There are higher levels of mental health issues in the Rossington and Bawtry Ward. Hospital admissions for self-harm (103.1 per 100.0) are higher than the national average (100 per 100.0). Around 30.4% of elderly people are living alone which could contribute loneliness and isolation. The streets surrounding Martins Lane, Lilac Close and Elm Tree Drive have a high number of residents who are widowed or surviving a civil partnership (20.5%).



Figure 21. Households with residents aged 16 year or older widowed or surviving from a civil partnership (ONS, 2021)

## Community Insight

### Appreciative Inquiry

The Well Doncaster Team undertake Appreciative Inquiry (AI) within communities to gather insight to inform co-designed action plans with the community. Armstrong (2020) suggests in 'A changing world, again. How Appreciative Inquiry can guide our growth' that reframing the questions in light of a crisis like Covid-19 and drawing on strengths and assets from past positive experience will help participants as they restructure their community. The AI questions are structured to pull out the successes of the past and present, to seek new potentials and possibilities and build on those through the Dream and Design stages.

The Appreciative Inquiry will include the following steps:

1. **Discovery Phase** – This will involve engagement with the residents of Hyde Park to find out what is working well in the community. Responses will be themed to allow priorities of the community to be established.
2. **Dream** – Residents and key stakeholders will be invited to attend an initial workshop to discuss what ideas they have for their community and how these will meet the priorities highlighted in the discovery phase.
3. **Design** – All attendees are invited back for a second workshop to develop an action plan to direct work for the community.
4. **Destiny** – A collaborative way of working and investing resources to meet the actions from the previous phase.

Bawtry & Austerfield hasn't been a Well Doncaster priority community so the appreciative enquiry approach has changed. Thematic analysis of Appreciative Inquiry involves identifying and examining recurring themes or patterns within the positive stories, experiences, and perspectives shared by community members. It seeks to understand the strengths, values, and successful aspects that contribute to a thriving community. The process involves extracting common themes from narratives gathered through AI, allowing for a deeper understanding of the community's assets and aspirations. Through this analysis, communities can build on their strengths to facilitate positive change and shape future support and investment.

Austerfield Themes/ Community priorities:

- Family and Friends
- Wellbeing
- Green Spaces
- Assets/ Places of Interest
- Travel/ Accessibility

Bawtry Themes/ Community Priorities:

- Family and Friends
- Wellbeing
- Green Spaces

- Places of Interest/ Assets
- Travel/Accessibility
- Heritage of the village

## Community Investment

Across the South locality a total of £821,780 was awarded to community groups through the Community Wealth Builder arm of Well Doncaster. Of that, £86,840 was awarded to the Rossington and Bawtry ward, primarily for children and young people's provision and increasing the sense of community spirit.

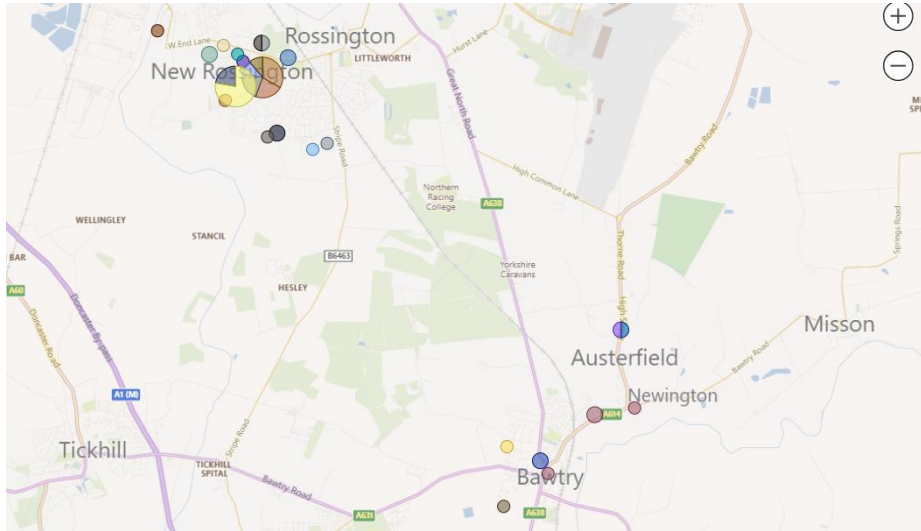


Figure 22. Heat map of investment in Rossington ward



## Doncaster Talks

In 2019 Doncaster Talks undertook insight across the borough of Doncaster. Responses were separated into wards and thematically analysed. Across Rossington and Bawtry ward, 125 responses were received (0.72% of the Ward). The main themes on what people liked about the area, what could be improved, and what the borough should focus on are displayed in the table below.

### ROSSINGTON & BAWTRY

#### Like

- Good community spirit
- Access and road links
- Access to green space
- Quiet place to live

#### Improve

- Police numbers
- More things to do in the community
- Improving cleanliness of streets
- Shops/bars/restaurants)

#### Focus

- Regeneration and investment
- Youth provision
- Cleanliness
- Job creation/employment



## References

### Well Doncaster Annual reports

Well Doncaster Approach: <https://youtu.be/e1RKOZoGI10>

More information about how Well Doncaster has been meeting outcomes and objectives can be found in past and present annual reports:

<https://welldoncaster.wordpress.com>

### Mosaic Data

Mosaic Public Sector classifies the UK population into one of 66 types and 15 groups through a detailed and accurate understanding of each citizen's demographics, lifestyles, behaviours and location.

#### The Physically Inactive Population of Doncaster

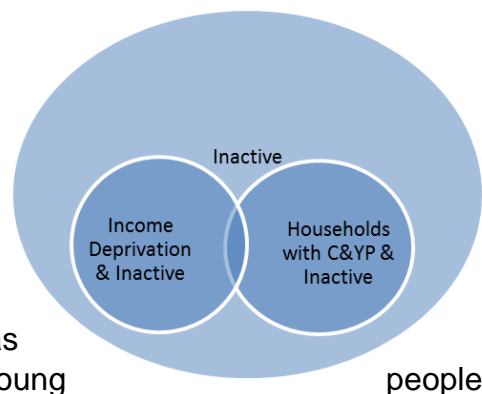
The MOSAIC types who "Do not exercise" and "Do not take part in Sport" were searched and three priority groups have been identified through work with strategic partners as part of the development of Doncaster's Physical Activity Strategy. The three priority groups are:

#### The Inactive

Families with children and young people

People living in income deprivation

These groups are cross-referenced against the inactivity list allowing for the identification of MOSAIC types which are both likely to be inactive and living in income deprivation as well as inactive and from households with children and young



people.

Link to the Get Doncaster Moving and LDP strategy; <https://getdoncastermoving.org/>

<https://getdoncastermoving.org/ldp>

### Acorn profiles

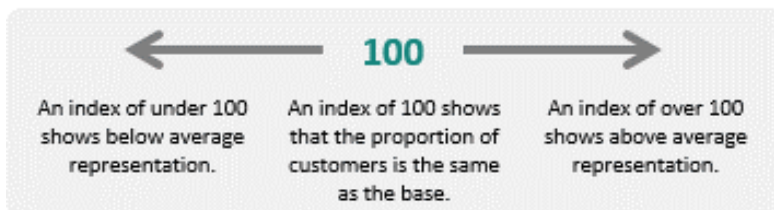
Wellbeing Acorn segments the population into 4 groups (Health Challenges; At Risk; Caution; Healthy) and 25 types describing the health and wellbeing attributes of each postcode across the country. By analysing significant social and health related behaviour, it provides precise information and an in depth understanding of upstream issues affected by current lifestyle traits



## INTERPRETING THE REPORT

The Wellbeing Acorn profile report helps you understand the underlying demographics, lifestyle and health attributes of your customers and service users by comparing their Wellbeing Acorn profile to a base (e.g. UK population, area or other customer groups).

### INDEX



The Wellbeing Acorn Profile contains 12 variables that are indicators of Disability or Infirmary in the population and 9 variables related to unhealthy Behaviours. The average score measured against the base profile of Yorkshire and the Humber is 100. A value above 100 indicates that the area population is over represented for this characteristic, below 100 the value is less than the average or under represented.

### Census Data

The census is undertaken by the Office for National Statistics every 10 years and gives us a picture of all the people and households in England and Wales.

The census collects data on individuals, households and communities. In doing so, it helps to build a detailed snapshot of our society. Information from the census helps the government and local authorities to plan and fund local services, such as education, doctors' surgeries and roads.

[Census - Office for National Statistics \(ons.gov.uk\)](https://www.ons.gov.uk)

[Build a custom area profile - Census 2021, ONS](#)

### Public Health Data

#### Fingertips

This is a new fingertips profile that uses data from Local Health -an existing PHE data tool. Local Health is a collection of quality assured health information presented for small geographical areas. By presenting data for small areas, Local Health provides evidence of inequalities within local areas. It supports targeted interventions to reduce such inequalities.

Local Health contains indicators related to:

- Population and demographic factors
- Wider determinants of health
- Health outcomes

It presents data for middle super output areas (MSOA), electoral wards, clinical commissioning groups (CCG), local authorities, and England as a whole.

Please note, as the Local Health tool was designed to allow users to map small area data, a mapping option has not been provided in this profile.

<https://fingertips.phe.org.uk/profile/local-health/data#page/0>

[Community Profiles - Power BI Report Server](#)

## Interactive Map

To access and identify assets at ward and locality level please use the following interactive map: <https://www.google.co.uk/maps/d/viewer?mid=17BayPsljI1OUq6U4OFbk9FKLYL2-wDZN&ll=53.50909620569456%2C-1.1365028000000032&z=14>

## Employment

More info can be found on <https://www.teamdoncaster.org.uk/community-profiles-2018>

## References

Armstrong AJ, Holmes CM, Henning D. A changing world, again. How Appreciative Inquiry can guide our growth. Social Sciences & Humanities Open. 2020;2(1):100038. oi:10.1016/j.ssaho.2020.100038

