

Adwick Le Street & Carcroft Community Profile Well Doncaster



Well Doncaster

Community Led Health and Wealth

Empowering people in Doncaster to live better, healthier, and happier lives.

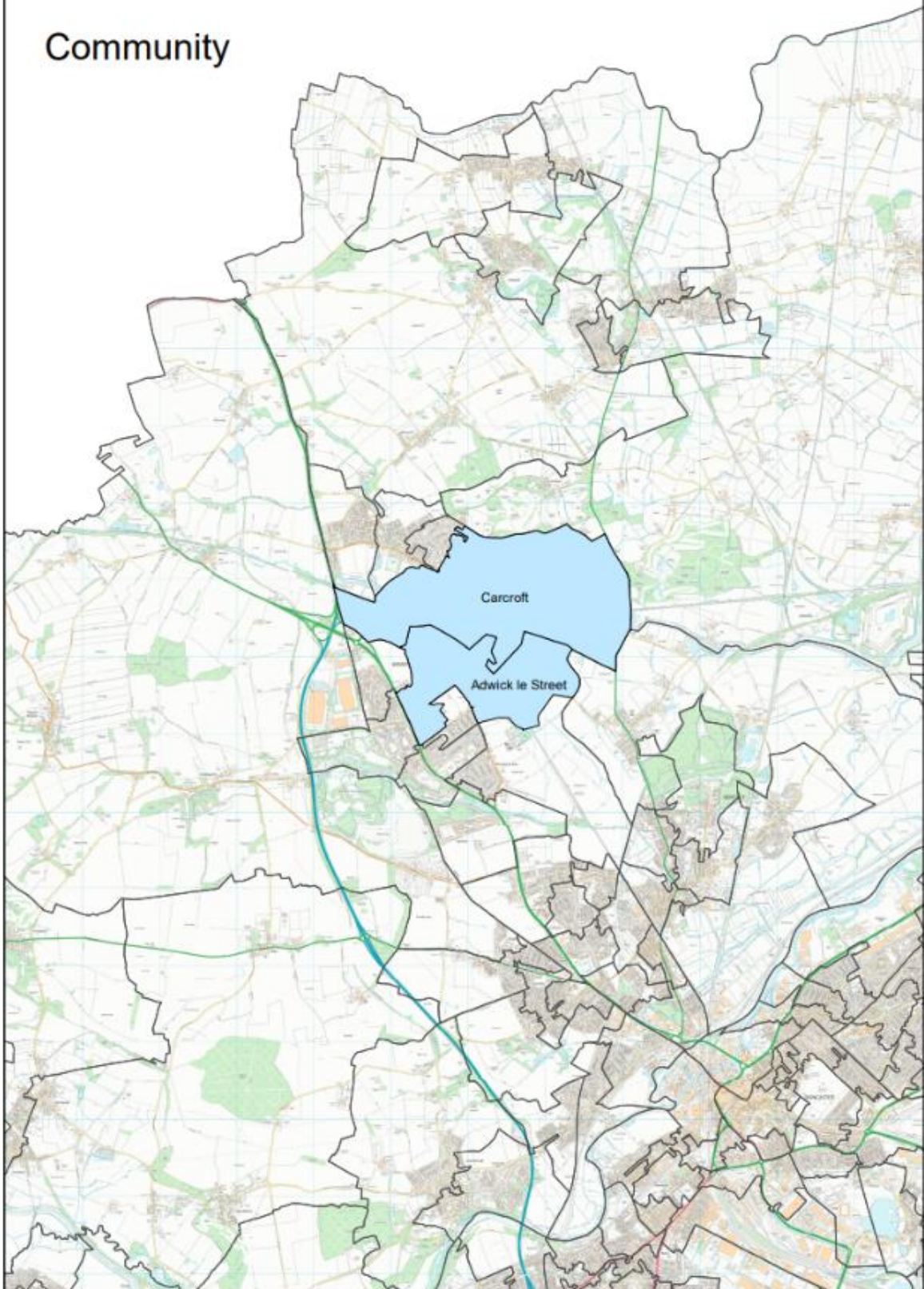
www.welldoncaster.uk

Well Doncaster
**Community
Wealth Builder**

Well Doncaster
Be Well

 **City of
Doncaster
Council**

Community



This Report

This report focuses on Adwick Le Street and Carcroft communities, part of the Adwick and Carcroft ward in the North of Doncaster. Where specific data for areas are unavailable, data for the ward has been presented.

The report begins with a one-page summary outlining key information and priorities about Adwick Le Street & Carcroft. The document builds on the initial community profile of Carcroft 2021 and updated figures have been included where possible. This report shows the initial conversations with communities, including ward members, community organisations, faith groups, residents and other organisations who work in the area. Communities' knowledge of their own areas enables them to identify their strengths and the assets on which they can build on. This document is shared with the intention of supporting those conversations and sharing information that might not be readily available to local people.



Adwick Le Street



GCSE
Attainment
score of 51.2
out of 90



25% of adults
are unable to
warm their
homes to a
reasonable
standard



Lung cancer rates
are the **3rd**
highest in
Doncaster



31.9% of
residents **live**
alone



Older than
average
population



63% of Carcroft
residents are
inactive

Carcroft



45.2 GCSE attainment score - lower than Doncaster



25% of adults were unable to warm their homes to a reasonable standard



Carcroft South/Enterprise Park has the 3rd highest rate of alcohol admissions in Doncaster



31.4% of older residents **live alone**



Younger than average population



63% of residents are **inactive**

Contents

This Report.....	3
One page Summary	8
Key Health Priorities	8
Assets	9
Asset Maps	9
Assets in the Community	11
Population Health Management.....	11
Ward Members	15
Health and Wealth.....	16
Deprivation.....	16
Wealth Inequalities.....	17
Fuel Poverty.....	17
Older People Living in Poverty (IDAOPI)	18
Food Poverty	18
Employment.....	19
Citizens Advice Doncaster Borough (CADB)	20
Childhood Development.....	20
Obesity levels	21
Fruit and Vegetable Intake.....	21
Hospital Admissions	21
Education.....	21
Educational Needs.....	22
Health Inequalities.....	23
Hospital Admissions	23
Cancer	24
Mental Health.....	24
Alcohol.....	25
Smoking.....	25
Life expectancy	27
Causes of Death	27
Physical Activity	29
Active Travel	30
Green Spaces and Parks	31

Community Information	32
Population	32
Population Size	32
Ethnicity and Language	32
Age Profile	32
Housing.....	33
Anti-Social Behaviour.....	33
Vulnerable Victims	34
Community Insight.....	36
Appreciative Inquiry	36
Doncaster Talks	39
Locality Plans.....	40
Community Investment	41
Appendix	42
Well Doncaster Annual reports	42
Census data 2021	42
Public Health Data	42
Acorn profiles	42
Get Doncaster Moving survey.....	43
Mosaic data.....	43
Pupil Lifestyle Survey 2022.....	44
Power BI – Joint Strategic Needs Assessment.....	44

One page Summary

Adwick Le Street and Carcroft ward is located in the North locality of Doncaster and comprises of four smaller communities: Adwick Le Street, Carcroft, Highfields and Woodlands and part of Skellow. As a ward, levels of deprivation are high, but deprivation does differ between communities. Older people living in poverty is an area of concern for the ward. A large proportion of the ward population are not in employment and are economically inactive, a considerably greater proportion of the population than Doncaster and England. The ward does not appear very diverse in ethnicity and languages spoken with the majority of residents identifying as 'white' and reporting their first language as English.

The proportion of residents with poor health in Adwick Le Street and Carcroft is considerably greater than the national average. Smoking rates are significantly higher than the national average, whilst children in Adwick Le Street and Carcroft have the highest rates of exposure to smoking in Doncaster. Incidences of all cancers remains one of the leading health conditions residents are living with, and the third highest in Doncaster. Respiratory diseases including COPD and lung cancer are the leading cause of death amongst Adwick Le Street and Carcroft residents. Mental health is another area of concern in the Adwick Le Street and Carcroft ward with considerably higher emergency hospital admissions for intentional self-harm reported.

Adwick Le Street

Adwick Le Street does not appear as deprived, sitting within the top forty-five most deprived communities of Doncaster. Adwick Le Street has fewer residents residing in the boundaries. Adwick Park playing fields provides the main form of green space for the community. School attainment scores are higher than the Doncaster and UK average.

Carcroft

Carcroft is one of the most deprived communities in Doncaster, and much more deprived than Adwick Le Street. Carcroft has a larger population residing in the boundaries. School attainment scores are lower in Carcroft than Adwick le Street, Doncaster and England. Carcroft is home to Carcroft Park and Owston Park Golf Course. It is surrounded by country fields that provide plenty of walks and open space for residents to utilise. There is a higher percentage of socially rented houses and accommodation in Carcroft, most of which are traditional terraced houses.

Key Health Priorities

- Mental health and intentional self-harm, including emergency hospital admissions
- Lifestyle choices including smoking and physical activity
- Respiratory diseases related to lifestyle choices, particularly smoking, including COPD and lung cancer

Assets

Well Doncaster uses a community-centred approach which allows investment in supporting, working with and empowering communities to facilitate healthier communities. The voice and role of our communities and taking a strength/assets-based approach to work with individuals, families and communities is crucial to the achievement our overall vision.

Asset Maps

The maps below show different types of assets across both Adwick Le Street and Carcroft. These maps have been developed using LSOA data and should highlight what each community has to offer. It should be noted that these maps are a starting point in understanding the community and that further work is needed amongst the community to understand all the assets and how they are used.

This map covers any form of business open for trading such as betting shops, cafés and supermarkets.

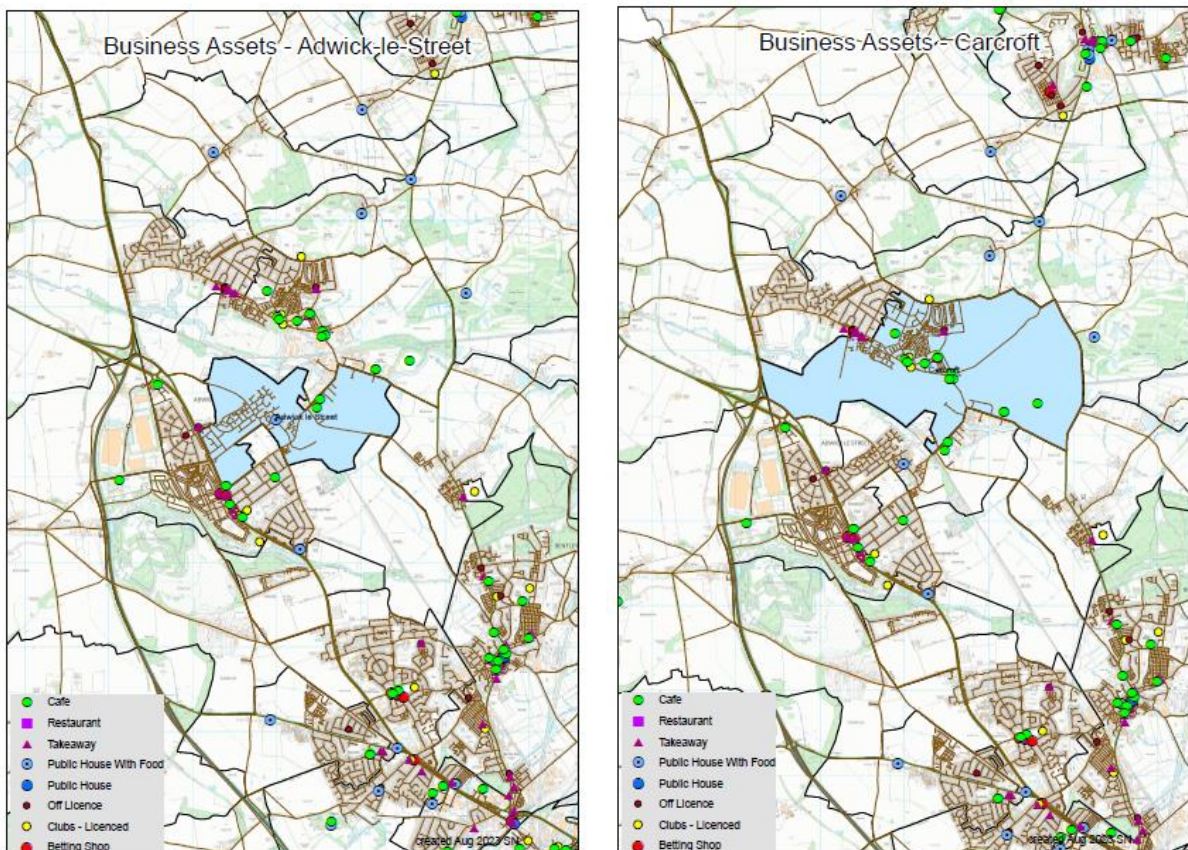


Figure 1. Adwick Le Street & Carcroft Business Assets

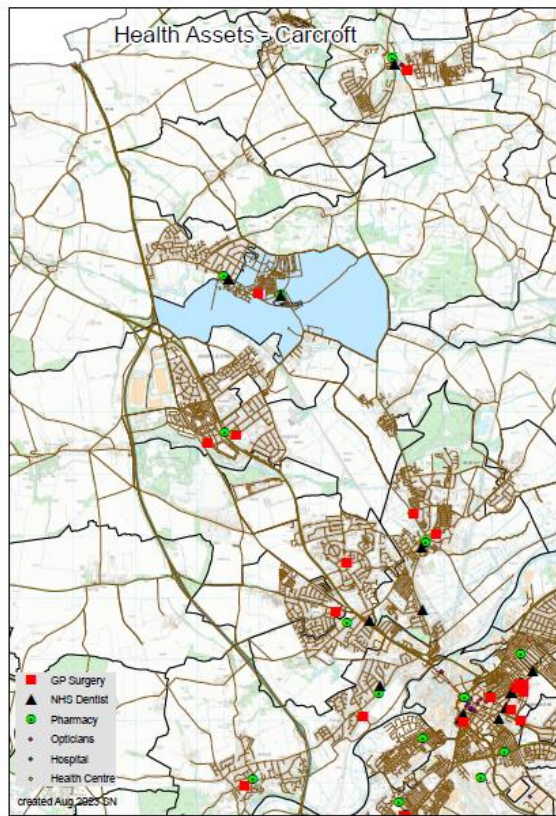
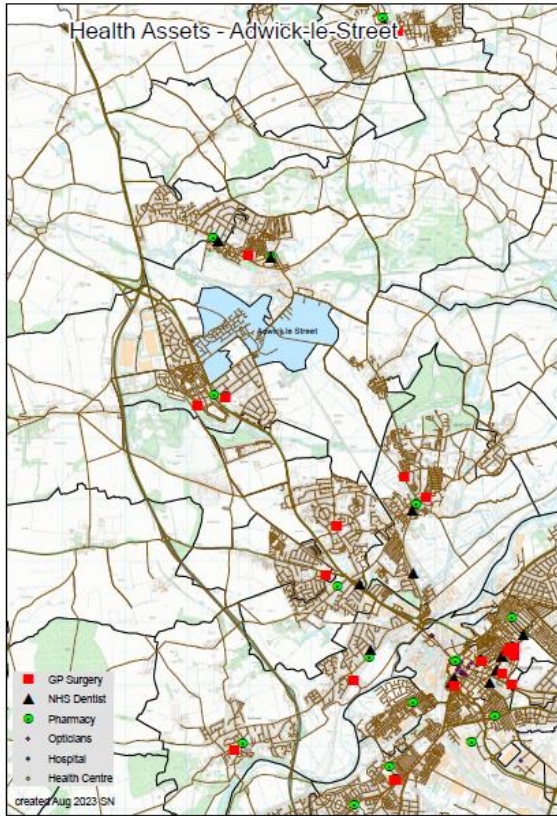


Figure 2. Adwick Le Street & Carcroft Health Assets

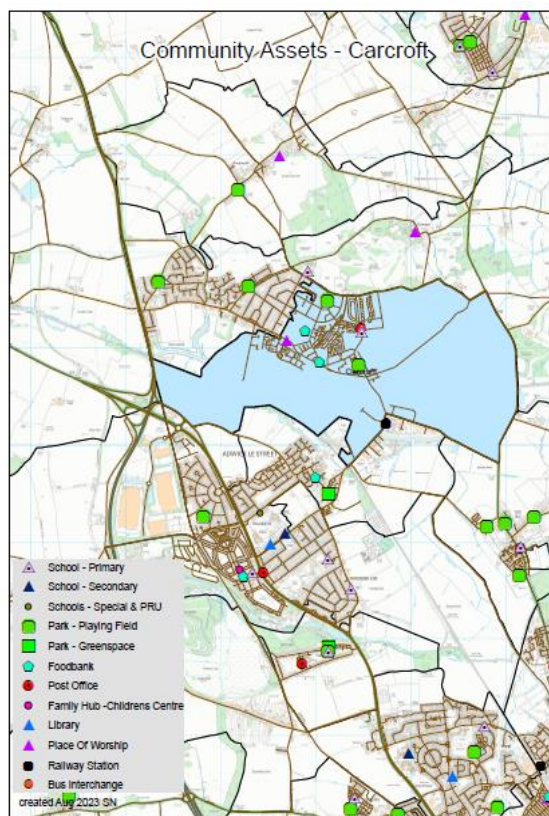
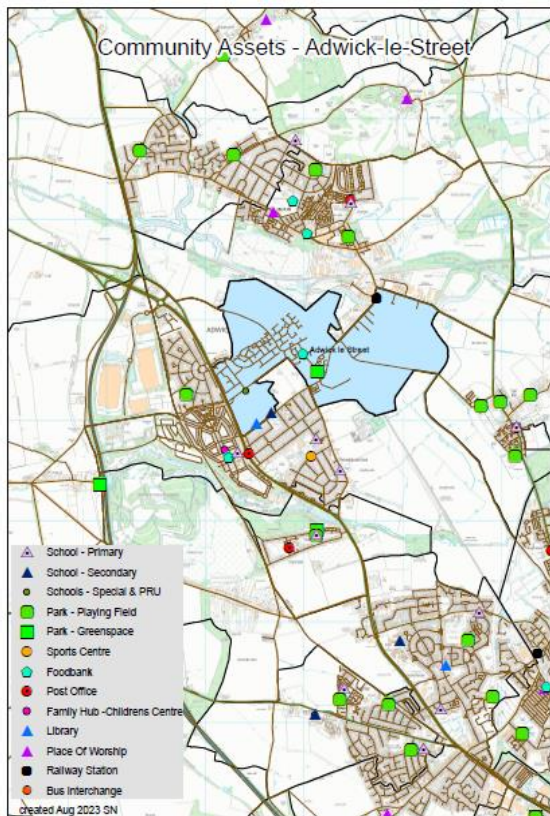


Figure 3. Adwick Le Street & Carcroft Community Assets

Adwick Park provides the main source of green space for Adwick Le Street residents consisting of play areas and sports pitches. The majority of other community assets are situated outside of the Adwick Le Street boundaries with many necessities located in neighbouring villages, Skellow and Tollbar. Carcroft is home to a local church, post office and a couple of green spaces but similarly to Adwick Le Street, residents do have to travel to neighbouring villages to access schools and other everyday necessities.

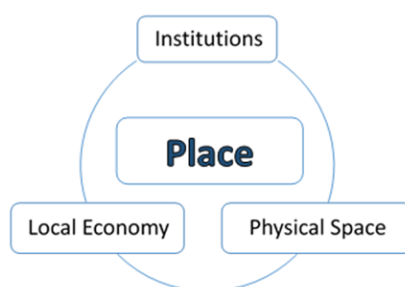
It is recognised that work is needed in the community to expand the understanding of who, how and what is accessed in each area. Greater knowledge of the identity of each community/ward will allow a more appropriate and effective response to community needs.

Assets in the Community

Population Health Management

It is vital to understand the effect and direction the pandemic and cost of living crisis is having on community organisations in the ward so that appropriate and targeted support can be offered, and work can be implemented to manage any gaps or risks associated with changes. To support the former, Well Doncaster officers undertake regular population health management insight with community organisations in, identifying their current status and needs, and work with each group and partners to meet their goals. This is a living document and will be updated and adapted as needs are met and change. If you would like more detail on this, please contact welldoncaster@doncaster.gov.uk

As part of a population health management approach, the following assets have been identified and themed around place and people:



Carcroft		
Institutions (Schools/colleges etc.)	Physical space (Parks, carparks etc.)	Local Economy (Local profit Businesses)
Schools/Education <ul style="list-style-type: none"> • Carcroft Primary School • The Ridge Employability College • Owston Park Primary 	Parks/Green Space : <ul style="list-style-type: none"> • Carcroft Park • Owston Park Golf Course • Trafalgar Way Green Space 	Shops: <ul style="list-style-type: none"> • Carcroft Farm Stores • ASDA Superstore • Iceland • Woods of Carcroft (butchers)

Carcroft		
Institutions (Schools/colleges etc.)	Physical space (Parks, carparks etc.)	Local Economy (Local profit Businesses)
<p>Pre-School provision:</p> <ul style="list-style-type: none"> • Little Oaks Day Nursery and Childcare <p>Healthcare:</p> <ul style="list-style-type: none"> • ASDA pharmacy • Chestnut pharmacy • Weldricks Pharmacy <p>Religion:</p> <ul style="list-style-type: none"> • St Michael & All the Angels Church • St George and the English Martyrs 	<p>Sports Halls/ Community Venues:</p> <ul style="list-style-type: none"> • Bullcroft Memorial Hall (DDT) • 23rd Owston Scout Group • Carcroft Village Club • Carcroft Household Waste Recycling Centre • CAB pop up Friday's at Bullcroft • Edward Road Communal Hall (St Leger Building) • The Redmond Centre 	<ul style="list-style-type: none"> • Carcroft Pet Supplies • Refurnish • Robsons DIY • Bulls eye motorists centre • Bramley Leisure • DFS Carcroft • Doncaster allsorts <p>Food Businesses:</p> <ul style="list-style-type: none"> • Café Express Carcroft • Bev-Ridge (Bullcroft) • Kingfishers chip shop • Pinar • Teasdales Bakerys • Coffee corner • Icelands food • Oops a Daisy • Efes • Uncle Toms pubs and restaurants • Jaffa cakes • Pinar take away • King fisheries
Adwick Le Street		
Institutions (Schools/colleges etc.)	Physical space (Parks, carparks etc.)	Local Economy (Local profit Businesses)
<p>Schools/Education</p> <ul style="list-style-type: none"> • Outwood Academy • Adwick Primary School • North Ridge Community School <p>Other</p>	<p>Parks/Green Space :</p> <ul style="list-style-type: none"> • Adwick Park and playing fields • Red House Cemetery <p>Sports Halls/ Community Venues:</p>	<p>Shops:</p> <ul style="list-style-type: none"> • Mill stores • Easy pet dog grooming and pet supplies

Carcroft		
Institutions (Schools/colleges etc.)	Physical space (Parks, carparks etc.)	Local Economy (Local profit Businesses)
<ul style="list-style-type: none"> Adwick Town Hall (Communities & SLH Base) <p>Religion:</p> <ul style="list-style-type: none"> Saint Laurence's Church Adwick le Street The Methodist Church Adwick le Street 	<ul style="list-style-type: none"> Foresters Arms Pub Whinfell Close Communal Hall Adwick Town Hall 	<ul style="list-style-type: none"> Hair we are unisex hair and beauty salon PETmedic Vets <p>SYNETIQ Doncaster</p>



Carcroft		
INDIVIDUALS (Key individuals within the community)	ASSOCIATIONS (Local Groups/Clubs)	STORIES (Good news stories)
<ul style="list-style-type: none"> Ward Members MP <p>Community leaders:</p> <ul style="list-style-type: none"> Volunteers in VCFS sector <p>Professionals:</p> <ul style="list-style-type: none"> Well Doncaster officer Be Well Officer Locality Development Officer St Leger Communities team Social Prescribing Team Family Hub Team 	<p>Support:</p> <ul style="list-style-type: none"> NDDT Food Pantry The Bread and Butter Thing <p>Physical Activity/Sports:</p> <ul style="list-style-type: none"> Carcroft Bowling Club Carcroft Village JFC <p>Children's:</p> <ul style="list-style-type: none"> 23rd Owston Scout Group Girl Guides <p>Other:</p> <ul style="list-style-type: none"> Upbeat (Mental Health Peer Support) 	<ul style="list-style-type: none"> Following on from the Appreciative Inquiry, Well Doncaster Officer Lauren has launched a new PAG in Carcroft, where we have an action plan as an ongoing live document. The group has grown with residents and partners, we have linked in with Asda Community Champions to host the PAG's from Asda Café which has proved a great central location in Carcrot for the group

<ul style="list-style-type: none"> Police Community Support Officers 		<p>to grow. The group is supported by Ward Councillors & NDDT too and they are so pleased with how the group is making things happen in Carcroft, something which has been a long time coming. The group is heading towards becoming a constituted group and we are planning to link in with CWB at future meetings to support this.</p>
Adwick Le Street		
<p style="text-align: center;">INDIVIDUALS (Key individuals within the community)</p>	<p style="text-align: center;">ASSOCIATIONS (Local Groups/Clubs)</p>	<p style="text-align: center;">STORIES (Good news stories)</p>
<ul style="list-style-type: none"> Ward Members Debbie Hutchinson, Sarah Smith & John Mounsey <p>Community leaders:</p> <ul style="list-style-type: none"> Volunteers in VCFS sector <p>Professionals:</p> <ul style="list-style-type: none"> Well Doncaster officer Be Well Officer Locality Development Officer St Leger Homes team Communities team Social Prescribing Team Family Hub Team Police Community Support Officers 	<p>Support:</p> <ul style="list-style-type: none"> Foresters Arms Foodbank <p>Physical Activity/Sports:</p> <ul style="list-style-type: none"> Adwick Park Rangers JFC Adwick le Street Cricket Club Village Street/Adwick St Lawrence Crown Green Bowls Club Adwick Park Foresters FC Men's team Brodsworth Welfare AFC Warriors 	<p>Adwick Park Sports and Activity Community Hub is taking shape on Adwick Park. The pavilion will be a fantastic asset to the community of Adwick le Street and wider and will support the local clubs and group who use the park such as Adwick Park Rangers and Adwick Cricket Club. The pavilion has been boosted by various funds with the local councillors for the ward raising £500,000</p>

Ward Members

The Adwick and Carcroft ward has three ward members who were elected in 2021.

Adwick and Carcroft



Councillor Debbie
Hutchinson

Adwick and
Carcroft
Labour



Councillor John
Mounsey

Adwick and
Carcroft
Labour



Councillor Sarah
Smith

Adwick and
Carcroft
Labour



Health and Wealth

Health inequalities are avoidable differences across the population, and between different groups within society. Health inequalities arise from the conditions in which we live, work and play. These conditions influence our opportunities for good health, how we think, feel and act, therefore shaping our health and wellbeing.

Deprivation

Evidence shows that people living in our most deprived areas face the worse health inequalities in relation to health access, experiences and outcomes. Deprivation covers a range of issues and refers to unmet needs caused by a lack of resources, including but not limited to finances, housing and education. It is measured in different ways including the Indices of Multiple Deprivation (IMD).

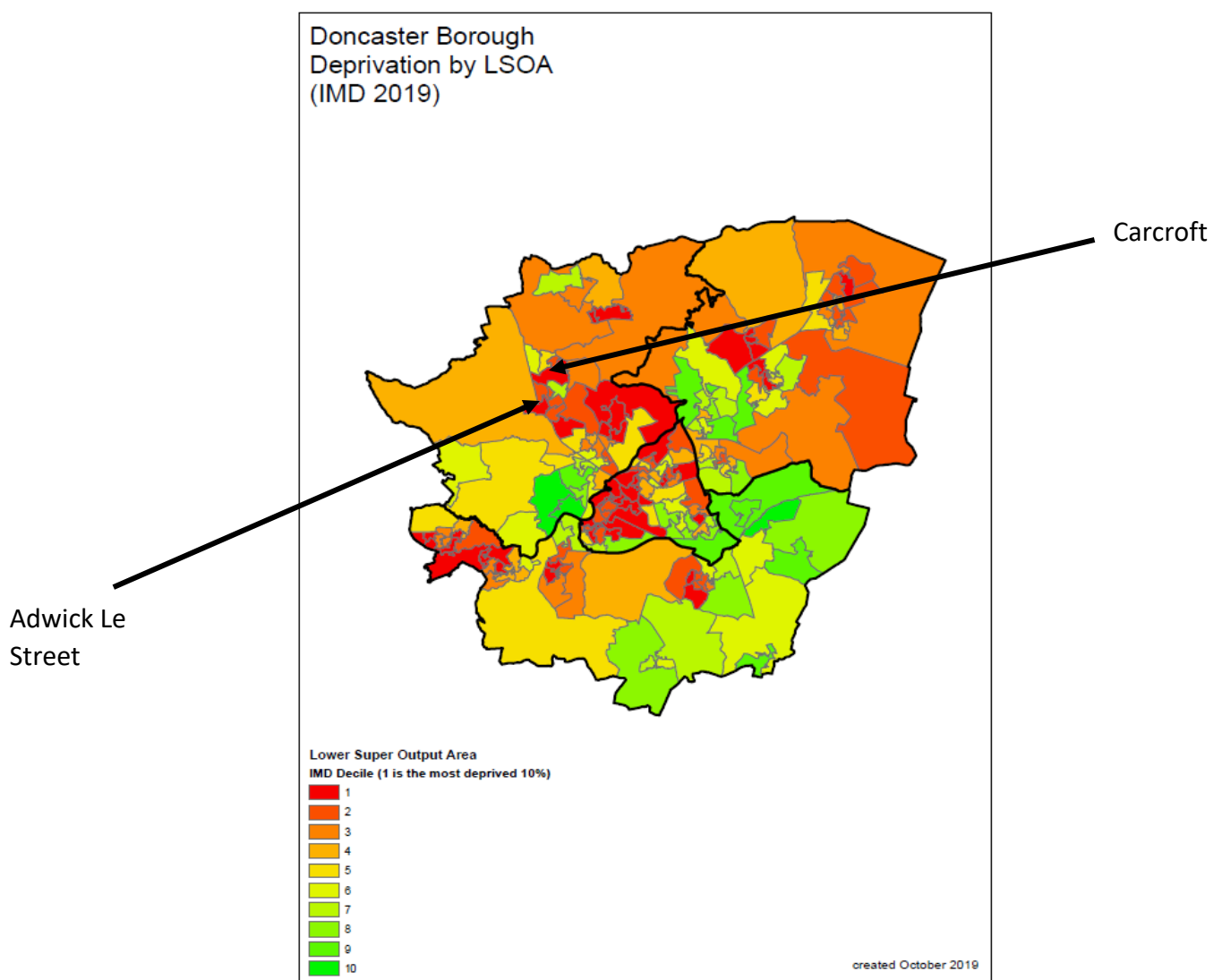
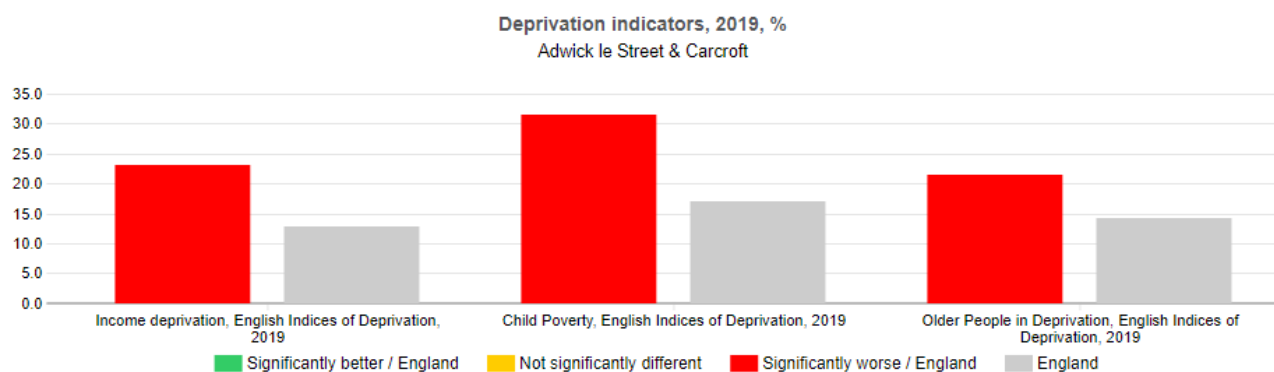


Figure 4. City of Doncaster deprivation by Lower Super Output Area (LSOA)

Figure 4 illustrates Carcroft as one of the most deprived communities in Doncaster. IMD data shows Carcroft (47.5) is now the ninth most deprived area in Doncaster whilst Adwick Le Street (24.7) does not appear as deprived, sitting within the top forty-five most deprived communities of Doncaster.

Wealth Inequalities

Many Adwick Le Street and Carcroft residents are currently living in poverty, which reflects the high level of multiple deprivation amongst communities. However, it must be noted that poverty rates do differ between Adwick Le Street and Carcroft and data



taken at ward level will not highlight this difference.

Figure 5. Deprivation indicators in Adwick and Carcroft compared to England (Public Health England, 2019)

Public Health England data shows there is a higher proportion of residents in Adwick Le Street and Carcroft ward (23%) living in deprivation due to low income compared to the Doncaster (16.6%) and national average (12.9%). It should be noted that this data reflects levels of both unemployment rates and working-age adults on low earnings.

Fuel Poverty

Table 1. Rates of Fuel Poverty at LSOA level in Adwick Le Street & Carcroft (Office of National Statistics, 2022)

LSOA Code	LSOA Name	Community Name	Number of households	Number of households in fuel poverty	Proportion of households fuel poor (%)
E010 0746 4	Doncaster 009A	Woodlands Central	623	126	20.2
E010 0746 5	Doncaster 009B	Woodlands Redhouse Interchange	777	111	14.3
E010 0746 6	Doncaster 009C	Woodlands Crescent	795	187	23.5
E010 0746 7	Doncaster 009D	Woodlands Park	664	154	23.2
E010 0747 0	Doncaster 005C	Skellow Laurel Terrace	557	117	21

E010 0747 1	Doncaster 009E	Adwick Le Street Mill Bridge	620	41	6.6
E010 0747 2	Doncaster 005D	Carcroft West	621	131	21.1
E010 0747 3	Doncaster 005E	Carcroft East	612	149	24.3
E010 0747 4	Doncaster 005F	Carcroft South/ Enterprise Park	632	155	24.5
E010 0750 4	Doncaster 009F	Woodlands East	624	118	18.9
E010 0750 7	Doncaster 009G	Highfields	498	153	30.7

Many residents are also living in fuel poverty. Fuel poverty is defined as a household living on a lower income that is not deemed reasonable enough to warm a home sufficiently. According to fuel poverty by Parliamentary constituency, North Doncaster has the highest rates of fuel poverty (19.1%) in comparison to Don Valley (15.4%) and Central Doncaster (18.1%). In 2020, 25% of adults were unable to warm their homes to a reasonable standard in Adwick Le Street & Carcroft ward compared to Doncaster's average (18.8%). This is the highest rate of fuel poverty in Doncaster. Rates across communities in the ward do differ. Data taken at LSAO level suggests residents living in fuel poverty is higher in Carcroft than Adwick Le Street (table 1).

Older People Living in Poverty (IDAOP)

Older people living in poverty (IDAOP) is another area of concern. In Adwick Le Street and Carcroft, 21.4% of older people are currently living in deprivation because of income deprivation. Such poverty can also have detrimental effects on child development. The Income Deprivation Affecting Children Index (IDACI) shows that 31.5% of children are living in households affected by low incomes compared to Doncaster (22.7%) and England's (17.1%) average.

Food Poverty

There are 8 active foodbanks in the North locality of Doncaster. North Doncaster Development Trust provides the only foodbank for Carcroft residents, whilst Foresters Community Foodbank provides the only foodbank for Adwick. Cost of Living Crisis, Low income, Benefit Changes, Debt and Benefit delays are the top 5 reasons for residents accessing support from foodbanks across Doncaster. Figure 5 shows demand for food support has increased since April 2022 across North of Doncaster. An average of 164 adults are supported by food parcels every month in North of Doncaster, whilst 97 children are supported by food parcels every month. It must be

noted that this data does not highlight what community residents are accessing support, and therefore it is unknown where food poverty is more prevalent.

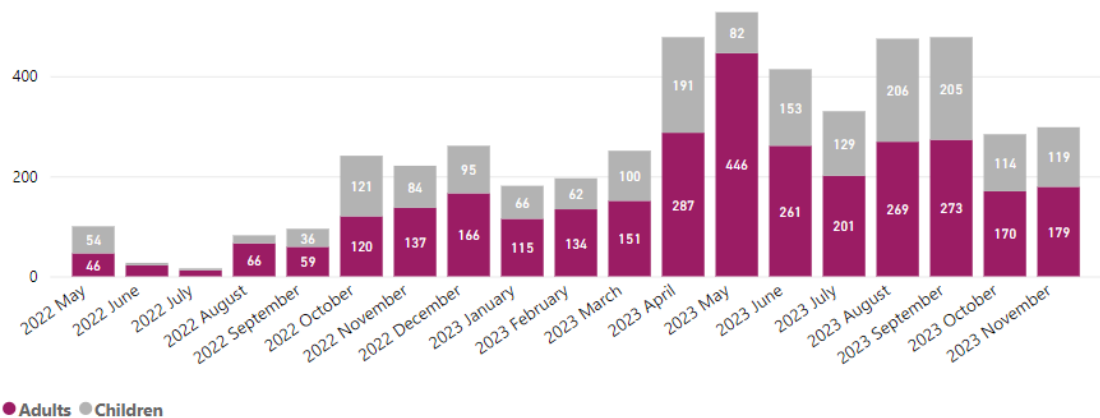


Figure 6. Number of Adults and Children accessing foodbanks in North of Doncaster (2023)

Employment

According to the 2021 Census, Adwick Le Street (9.9%) and Carcroft (10.8%) have similar rates of the population that are not in employment and have not worked in the last 12 months (Office of National Statistics; ONS, 2021).

over half of the ward population (59.3%) are not in employment and have not worked in the last 12 months, with 29.3% of these residents having never worked in comparison to the average of England (5%) and Doncaster (6.1%) (ONS, 2021).

This is also reflected in the high proportion of residents aged over 16 years of age (41.8%) who are economically inactive in comparison to England (39.1%). Given the coronavirus pandemic was declared in early 2020 and this data was taken across 2021/22, rates of short-term unemployment may reflect the increased job losses during this time. Work should be undertaken to increase residents' career aspirations and employability skill sets to improve employment opportunities.

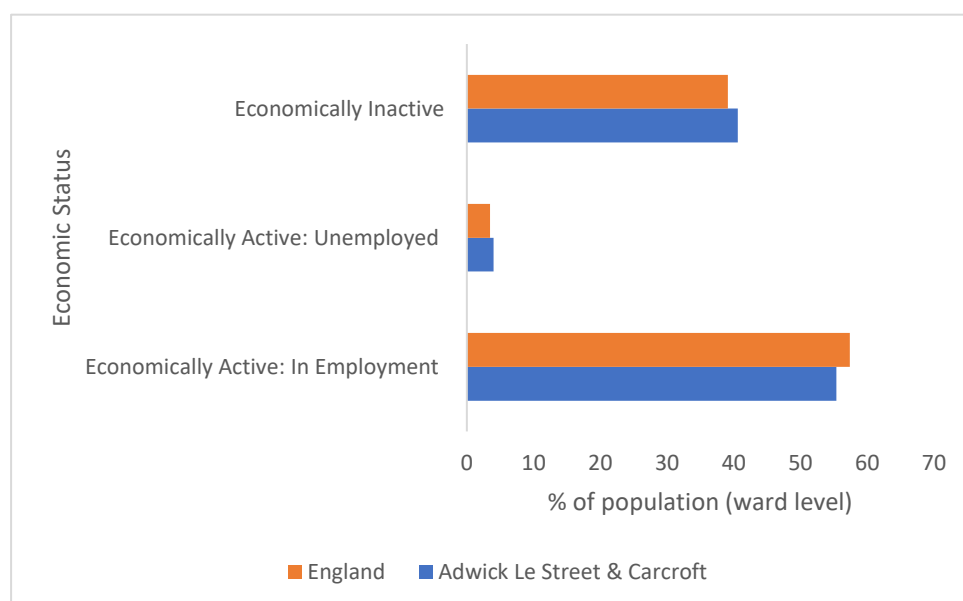


Figure 7. Economic Status of residents (ONS, 2021)

According to the 2021 Census, the majority of residents hold a level 1,2 or 3 qualification (45%). The percentage of residents holding a level 4 qualification or above sits at just 17% , significantly lower than the England average (33.9%). Residents in Adwick and Carcroft who have no qualifications (28.8%) is significantly higher than Doncaster (22.7%) and England (18.1%). The highest proportion of people in Adwick and Woodlands are employed in elementary occupations (19.4%), which is higher than Doncaster (16.5%) and England (10.5%). Those working in high skilled occupations such as managers directors and officials (8.3%) and professional occupations (9.1%) is significantly lower than Doncaster (10.2%) and England (12.9%). This identifies an important part of childhood and adult development to ensure investment, skills/training and employment opportunities are accessible for this community.

Citizens Advice Doncaster Borough (CADB)

Citizens advice Doncaster Borough (CADB) are an independent charity and part of the Citizens Advice Network across England and Wales. They provide free, confidential and impartial advice and campaign on money, benefit, housing or employment issues affecting people’s lives. There are 154 residents living in Adwick Le Street and Carcroft currently accessing CADB. During the 2023/24 fiscal year, Adwick Le Street and Carcroft had the 2nd highest number of interactions with CADB in the North of Doncaster. Benefits and tax credits, debt, utilities and communications, benefits and universal credits and housing issues are the top 5 issues when seeking support.

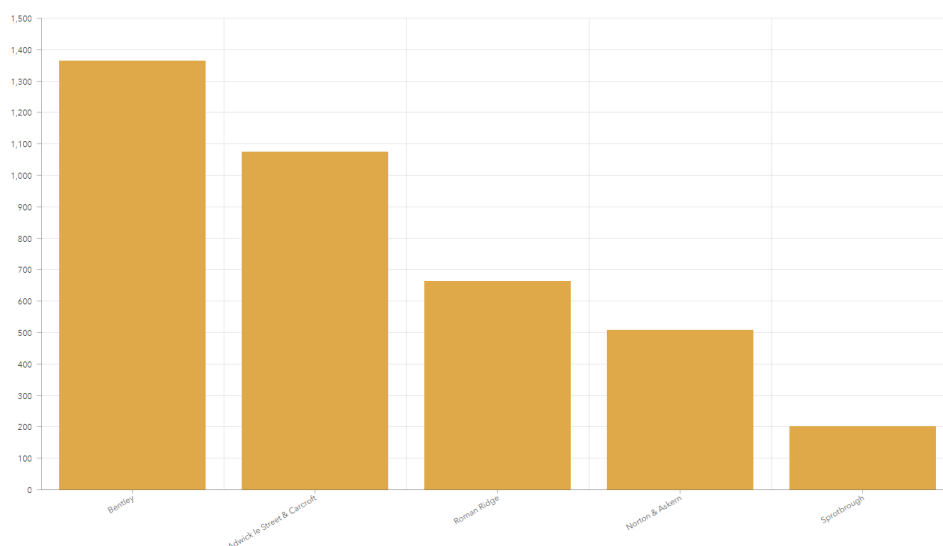


Figure 8. number of interactions with Citizens Advice Doncaster Borough (CADB) during fiscal year 2023/24

Childhood Development

A child’s early experiences are vital in providing the foundations for children to develop healthily and happily. Children being born into deprivation and living amongst deprivation in their early years are more likely to experience a wide range of health

problems, fall behind their peers and face employment problems in adult life. The quality of early experiences is important as children develop, providing opportunity for motor (physical), intellectual (language and communication), cognitive and socio-emotional development.

Obesity levels

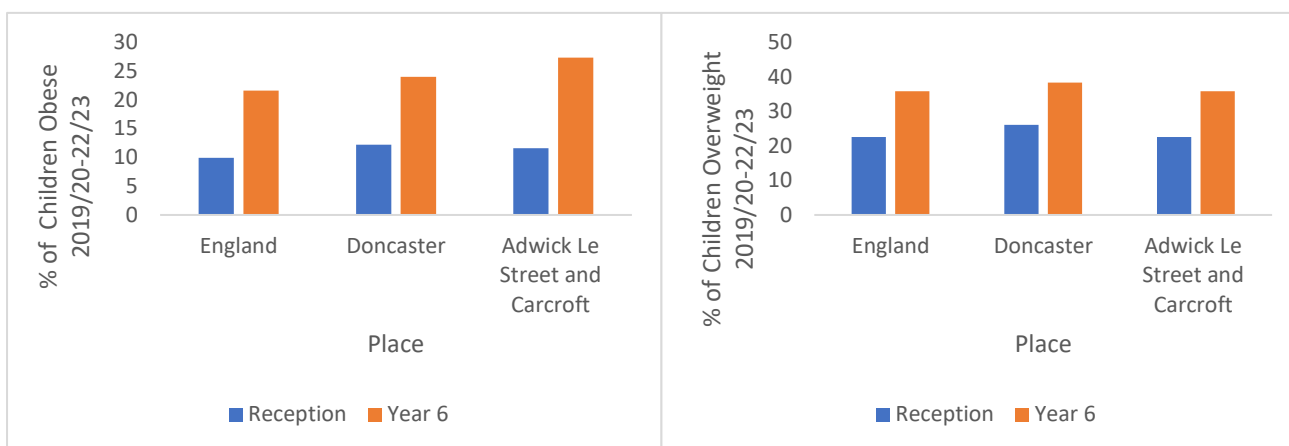


Figure 9. Prevalence of obesity and overweight children in Reception and Year 6 (National Child Measurement Programme, 2020)

Children classified as overweight (including obese) in reception are more prevalent in Adwick Le Street and Carcroft (27.3%) compared to the average of Doncaster (22.6%). This trend continues into year 6, where nearly the double numbers of children are reported to be overweight, obese or severely obese (Figure 8). The longevity and early onset of such health risks suggests public health interventions need to target families and children at a much earlier age to educate them on healthy lifestyle choices and the impact of poor choices on their health.

Fruit and Vegetable Intake

Data over the last 12 months does suggest school aged children do consume some form of healthy foods during the week. That is, 71% children reported to have eaten fruit and/or vegetables most or every day of the week in 2021 compared to 63% in 2020. However, 19% of pupils reported to consume takeaways most or every day of the week compared to Doncaster's 13% average. More specifically, public health interventions may need to focus on educating school aged children and parents on food choices and eating healthy meals on a budget.

Hospital Admissions

NHS (2021) data shows the rate of A&E admissions and emergency admissions in under 5s are both significantly lower in Adwick and Carcroft (104.0 per 1000) than England (140.7 per 1000). However, the rate of emergency hospital admissions for ages 15 to 24 are significantly higher in Adwick and Carcroft (175.1 per 1000) than figures reported for England (127.9 per 1000) and slightly higher for Doncaster (161.6 per 1000).

Education

At KS4, each pupil is given an Attainment 8 score (a score out of 90) based on their 8 best GCSE grades including English, maths and at least 3 other traditional academic

GCSEs (sciences, languages, and humanities). Other qualifications at an equivalent level (e.g. BTECs) can also count towards the score. In 2022, average GCSE attainment scores per pupil (out of 90) was 51.2 in Adwick Le Street and 42.5 in Carcroft. Scores in Carcroft are lower than both Doncaster (45.2) and England (48.8). In 2023, 60% of pupils achieved the expected standard in reading, writing, and mathematics at key stage 2 in Adwick Le Street, in line with the national average. Carcroft data was unavailable due to an administrative error on KS2 assessments.

Educational Needs

The Census (2021) reported that 12% of pupils in Adwick & Carcroft have Special Educational Needs, slightly higher than Doncaster (10%). However only 74% of these receive extra help in school, which is significantly higher than Doncaster (48%) and is the highest in the borough.

The 2021-22 Pupil Lifestyle Survey (2022) which included primary and secondary schools across Doncaster reported that children in Adwick Le Street and Carcroft have the highest rates of exposure to smoking in Doncaster, both in the home and in vehicles. That is, 46% of the children surveyed encountered smoking in the home, whilst 17% reported experiences of smoking indoors and as a passenger in a car. Evidence suggests growing up in a home where smoking occurs is one of the biggest risk factors to children becoming smokers themselves and may explain the high rates of smoking and smoking related health conditions in adult years. It is important to note that the Pupil Lifestyle Survey is self-reported and was not completed by all the schools.



Health Inequalities

The proportion of residents with poor health in Adwick Le Street and Carcroft is considerably greater than the national average. OHID reported 24% of residents as having a limiting health condition or disability compared to an average of 17.6% across England. In addition to this, residents have self-reported that their health is poorer than across Doncaster and England. That is, 23.4% of residents in the ward reported their health as fair, bad or poor whilst 22.3% of residents are registered disabled under the Equality Act.

Hospital Admissions

Hospital admissions for those living with limiting illnesses or health conditions largely associated with poor lifestyle choices are significantly higher across Adwick Le Street and Carcroft. Figure 8 shows the number of emergency admissions to hospital per 100 people for Chronic Obstructive Pulmonary Disease (COPD), Myocardial Infarction, Strokes and Chronic Heart Disease (CHD). Admissions associated with COPD are nearly double the national average, suggesting challenges around self-management of the condition and long-term poor lifestyle choices.

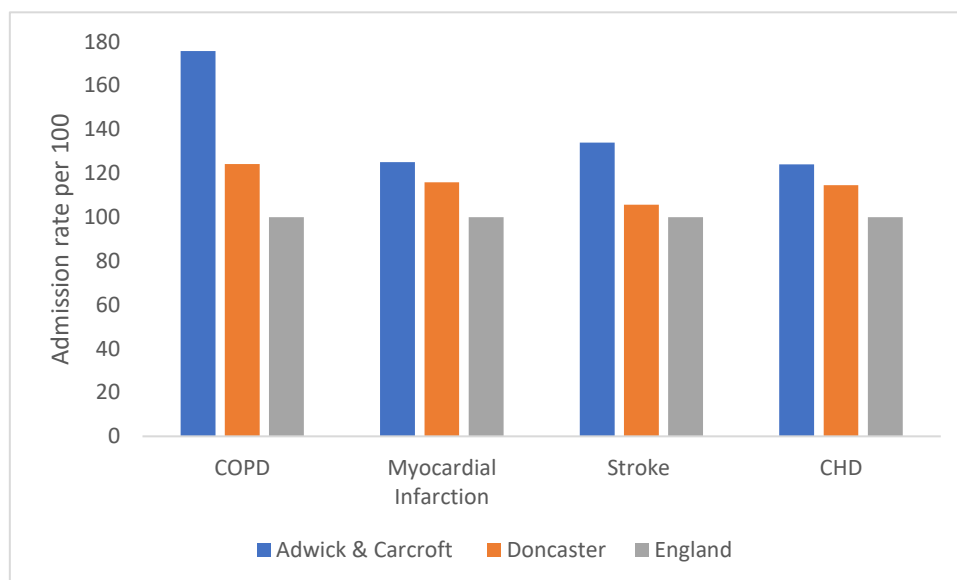


Figure 10. Comparison of hospital admissions across (ONS, 2021)

Cancer

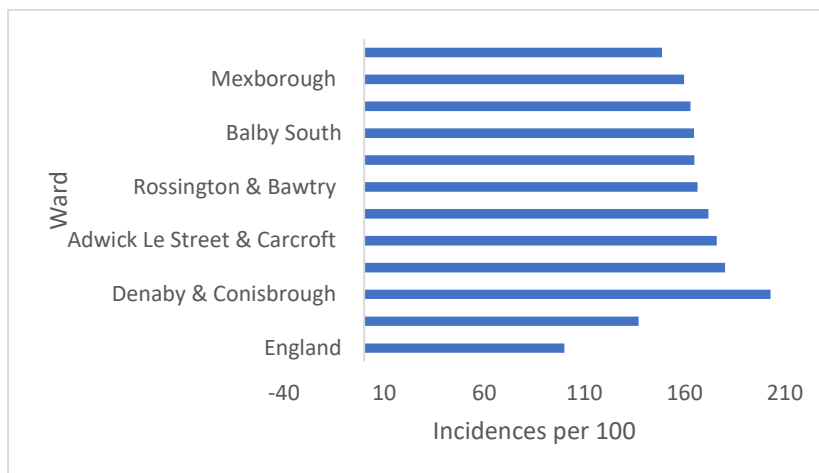


Figure 11. Comparison of incidences of lung cancer across Doncaster 2015-19 per 100 of population (ONS, 2021)

Incidences of all cancers remains one of the leading health conditions residents are living with in Adwick Le Street and Carcroft. Specifically, incidences of lung cancer are considerably the highest (176.1 per 100) in the ward and the 3rd highest in Doncaster. Both COPD and lung cancer are highly preventable diseases through lifestyle choices. Both are respiratory diseases that are associated with long-term smoking and possible job history. This suggests there are significant challenges around self-management, health literacy and appropriate uses of health services.

Mental Health

Mental health is another area of concern in the Adwick Le Street and Carcroft ward. There is considerably higher emergency hospital admissions for intentional self-harm in the ward (153.3 per 100) than Doncaster (121.6 per 100) and England (100).

The graphic below highlights the percentage of residents in Highfields who have been diagnosed with clinical depression, as well as rates of other self-reported indicators of mental health and wellbeing. All of these are higher than Doncaster.

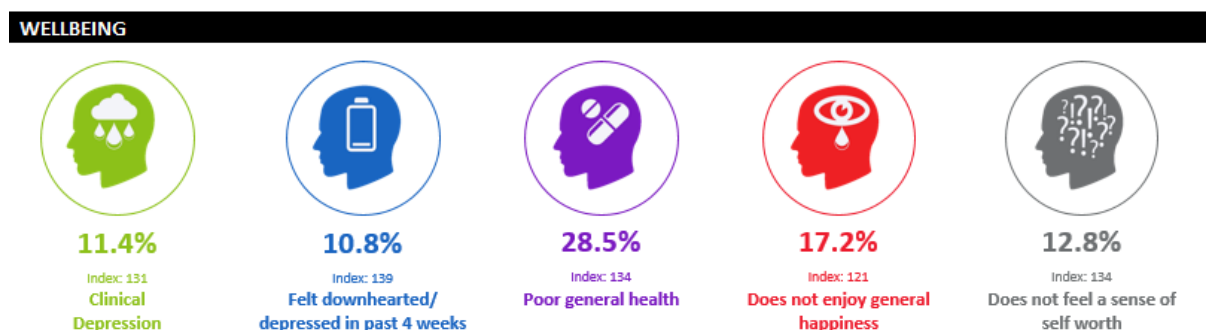


Figure 12. Mental Wellbeing data (ACORN City of Doncaster Council, 2021)

A lifestyle choice is a conscious and personal decision to engage in behaviour that may increase or decrease the risk of injury or disease. Healthy lifestyle choices can increase the chances of leading a happier and healthier life for a longer time. Many residents in Adwick Le Street and Carcroft engage in poor lifestyle choices increasing the risk of chronic diseases discussed above.

Alcohol

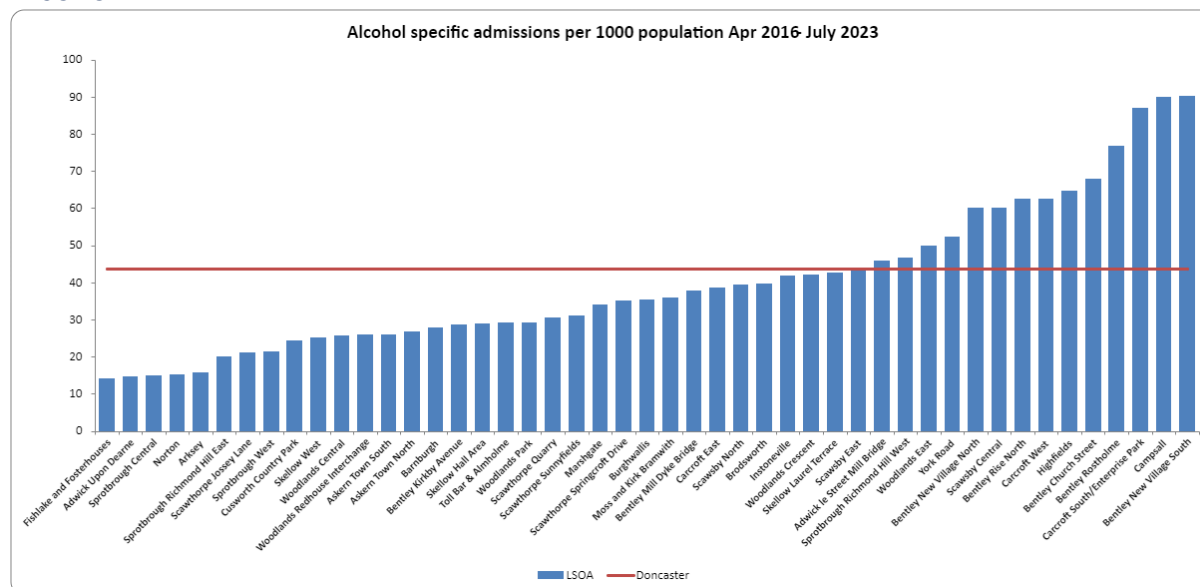


Figure 13. Alcohol Specific Admissions per 1000 population April 2016-2023 (ONS, 2021)

Figure 13 shows data taken at LSAO level and highlights discrepancies across communities when relating to alcohol incidences. There is considerably more issues related to alcohol in Carcroft than Adwick Le Street. Carcroft South/ Enterprise Park have the third highest rate of alcohol related incidences (87 per 1000) in Doncaster. Carcroft West was amongst the top 7 communities to report high incidences of alcohol related admissions (62.5 per 1000).

Smoking

Table 2. Smoking Prevalence in Primary Care Network practices across Doncaster (NHS England, 2023)

Practice	Sum of age 15+	Sum of Smokers	Sum of Prevalence
The Flying Scotsman Health Centre	9671	3053	31.57%
Frances Street Medical Centre	5931	1532	25.83%
The New Surgery	6143	1447	23.56%
The Nayar Practice	4229	979	23.15%
The Ransome Practice	6749	1519	22.51%

Edlington Health Centre Practice	4010	877	21.87%
Thorne Moor Medical Practice	7867	1688	21.46%
Conisbrough Medical Practice	1377	287	20.84%
Askern Medical Practice	6441	1333	20.70%
Field Road Surgery	7840	1615	20.60%
Kingthorne Group Practice	11261	2272	20.18%
Northfield Surgery	8405	1681	20.00%
Mexborough Health Centre	4130	821	19.88%
Great North Medical Group	13539	2682	19.81%
Regent Square Group Practice	8533	1675	19.63%
Conisbrough Group Practice	9756	1906	19.54%
Don Valley Healthcare	11148	2157	19.35%
St. Johns Group Practice	7301	1373	18.81%
The Scott Practice	12879	2327	18.07%
The Rossington Practice	6766	1207	17.84%
The Lakeside Practice	7261	1280	17.63%
Denaby Medical Practice	2921	509	17.43%
West End Clinic	3706	643	17.35%
White House Farm Medical Centre	5181	867	16.73%
Asa Medical Group	16707	2794	16.72%
Petersgate Medical Centre	7633	1225	16.05%
St Vincent Medical Centre	12203	1817	14.89%
The Oakwood Surgery	4797	677	14.11%
Mount Group Practice	11271	1567	13.90%
Scawsby Health Centre Practice	4850	655	13.51%
The Burns Practice	13152	1717	13.06%
Hatfield Health Centre	7785	952	12.23%
Park View Surgery	2126	238	11.19%
Dunsville Medical Centre	5268	542	10.29%
The Tickhill & Colliery Medical Practice	7447	700	9.40%
The Mayflower Medical Practice	6353	544	8.56%
Barnburgh Surgery	2044	174	8.51%
Doncaster	274681	49332	17.96%

According to NHS England (2023), there are 64045 registered patients with Doncaster North Primary Network (PCN) in North of Doncaster, 11,885 of those are registered as smokers. Petersgate Medical Centre is the closest PCN GP practice for Adwick Le Street residents to register at, where 1225 patients are registered as smokers. This equates to 16.1% of patients. Data taken from Great North Medical Group suggests

smoking prevalence to be much higher in Carcroft. That is, a total of 2682 residents are registered as smokers, equating to 19.8% of GP users which is significantly higher than Doncaster overall. It must be noted that such data is taken from self-reported measures when signing up to a GP and so, relies on individuals self-reporting their behaviours. It must also be noted that residents registered at GPs do not necessarily reside in that community and may not truly reflect the prevalence of smoking in specific communities.

Life expectancy

Adwick Le Street and Carcroft has the third lowest life expectancy in males (75 years) and the lowest life expectancy in females (78 years) (ONS, 2021).

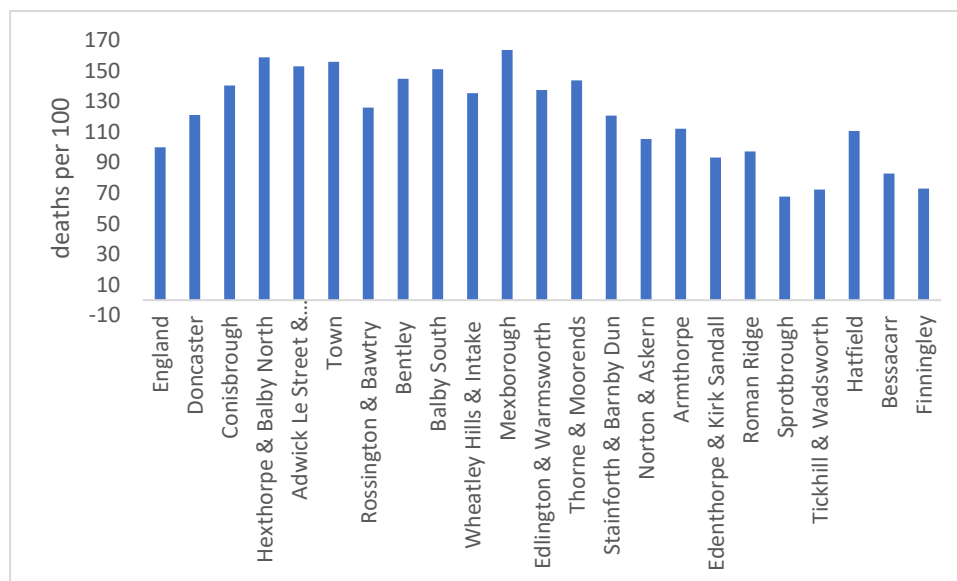


Figure 14. Deaths from all causes in under 75s (ONS, 2021)

Causes of Death

A significant number of deaths occur in under 75s in Adwick Le Street and Carcroft. The ward has the 4th highest number of deaths in under 75s (153 per 100 people) compared to the rest of the borough (figure 11). Mortality rates of all ages and all causes is the highest in Doncaster. A large number of deaths in under 75s are considered preventable (162.5 per 100).

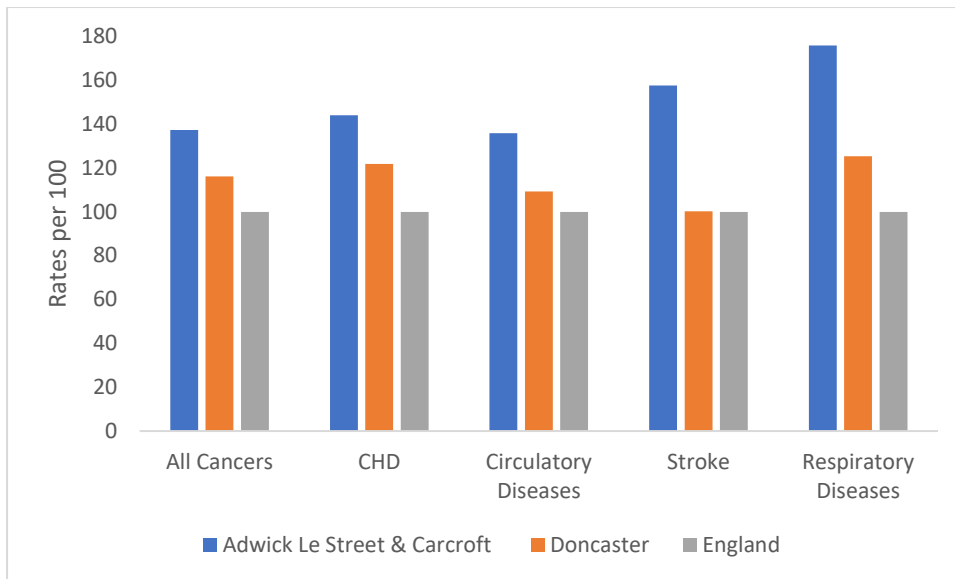


Figure 15. Comparison of deaths from all causes 2016-2020 (ONS, 2021)

Figure 12 shows that respiratory diseases including COPD and lung cancer (175.8) are the leading cause of death amongst Adwick Le Street and Carcroft residents. The chances of such diseases occurring increases with the following factors: smoking, air pollution, allergens and occupational risks. Stroke, CHD and All Cancers are also top causes of deaths in this ward. Such diseases increase with the following factors: smoking, living conditions, poor diet and lack of physical activity, all factors that are considered controllable.

Physical Activity

Mosaic data shows a high percentage of the population in Adwick Le Street & Carcroft do not engage in any moderate intensity physical activity. Please see [appendix](#) for more information on mosaic data.

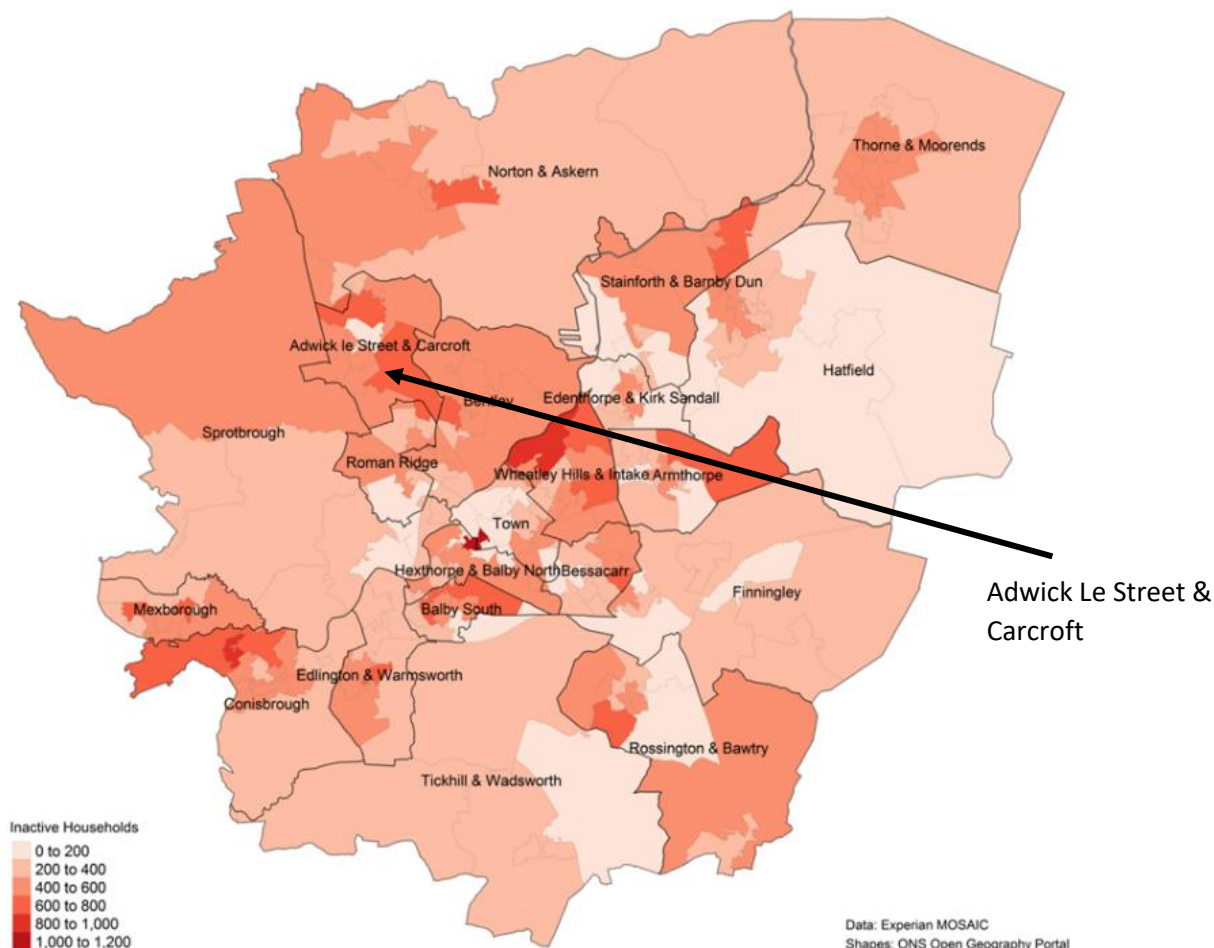


Figure 16. Levels of Inactivity across Doncaster

Adwick le Street has 883 households that are likely to have high levels of inactivity. This data has been overlaid with the number of children and young people and with deprived, inactive households. This triad of data then positions Adwick le Street as an area of focus. The table below shows the number of inactive, low-income households and children and young people:

Table 3. Get Doncaster Moving Priority communities

Community	Inactive households	Low Income households	C&YP	Total
Adwick le Street	883	877	920	2680
Denaby	951	913	514	2378

Wheatley Park & Wheatley Hills	802	885	667	2354
Bentley	883	692	773	2348
Edlington	667	858	726	2251
New Rossington	673	823	749	2245
Intake	651	781	668	21000
Skellow & Carcroft	594	892	563	2049
Stainforth	618	738	676	2032
Thorne	747	817	367	1931

A Get Doncaster Moving survey identified the following key barriers to physical activity for inactive people in Adwick and Carcroft:

- Not wanting to be active/Having less desire to be active (reflective motivation)
- Not having routines or habits (automatic motivation)
- Having less physical skills and stamina to be active (physical capability)

Data from the Pupil Lifestyle Survey (2022) reports an average of 22% of children being physically active on only one or two days a week, 26% were said to be active on three or four days a week, and 50% on five or more occasions during the week. Getting hot, tired, not being very good at physical activity and preferring to do other things were the top three responding answers given by pupils when asked why they did not participate in physical activity. The full Pupil Lifestyle Survey at ward level and locality level can be found [here](#). Adwick and Carcroft have one of the lowest number of children walking to school (37%) and pupils participating in school clubs (12%). This aligns with the levels of overweight and obese children at school age and increasing numbers since 2021.

Active Travel

A high proportion of individuals travel less than 10km to get to work (58%), when compared to Doncaster (41.7%) and England (35.4%). However, a high number of individuals travel by car or van to work (59.8%) than Doncaster (57.9%), and less people walk to work (6.5%) than Doncaster (7.1%). Active Travel to and from work could be considered to improve physical activity levels in the community.

Green Spaces and Parks

Carcroft Park provides the main form of green Space in Carcroft, situated on Chestnut Avenue. Here, the park consists of junior play areas, multi-use area, a skate park, playing field, sheltered seating, bowling green and a public memorial space. Owston Park Golf Course is a 9-hole golf playing course open to those with a paying membership. It is surrounded by country fields that provide plenty of walks and open space for residents to utilise.

Adwick Park and playing fields provides the main force of green space for Adwick residents just A short walk from Adwick Interchange. Adwick Park consists of plenty of places to for sports and exercise with playing fields, including football pitches, cricket pitches, tennis court and a basketball post. It is also home to a bowling green and Adwick Park Rangers FC.



Community Information

Population

Population Size

Adwick Le Street & Carcroft (Ward): 16,697

Adwick Le Street: 2,600

Carcroft: 5,400

Ethnicity and Language



Figure 17. Ethnicity of Adwick Le Street and Carcroft residents (ONS, 2021)

Adwick Le Street and Carcroft does not appear to be very diverse in ethnicity or languages spoken. Over 96% of the population residing in this ward identify as 'White' and report that their main language spoken is English.

Age Profile

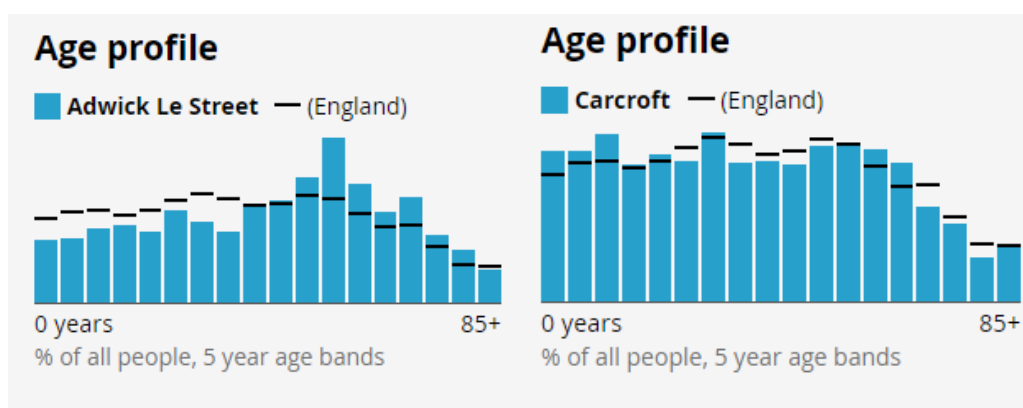


Figure 18. Age profiles of Adwick Le Street and Carcroft (Census, 2021)

Adwick Le Street has an older than average population, whilst Carcroft has a much younger population. There are similar numbers of males and females within each age group category.

Housing

Housing conditions and the surrounding environment can have profound impacts upon residents' health and exacerbate health inequalities.

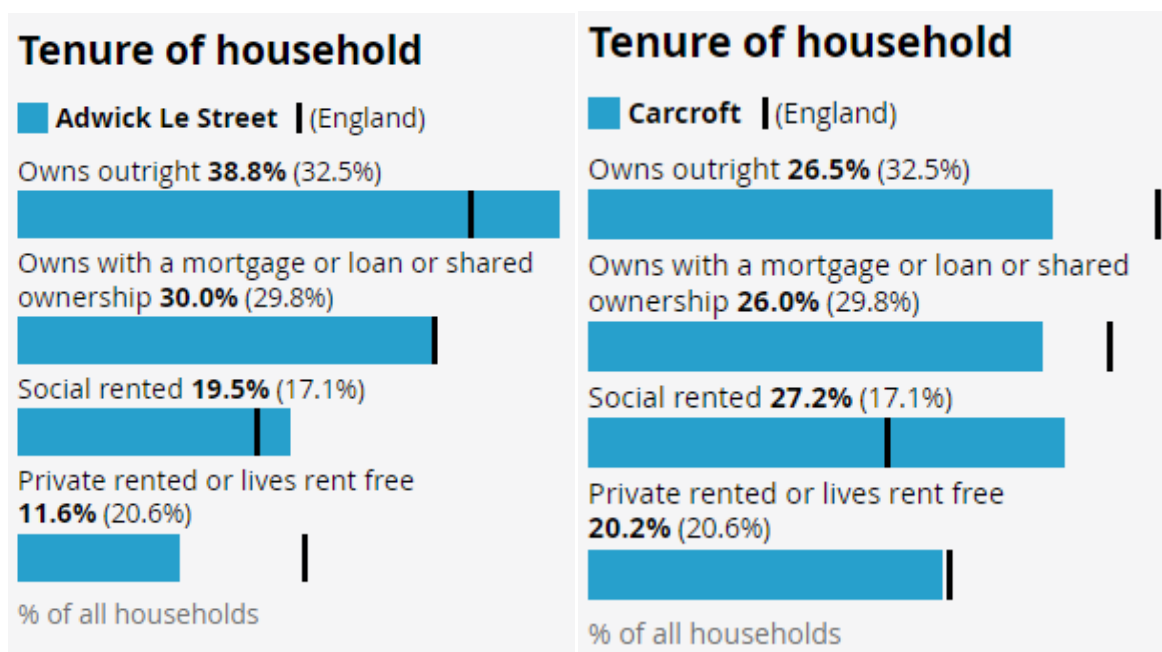


Figure 19. Tenure of Households in Adwick Le Street and Carcroft (ONS, 2021)

A larger proportion of residents own their house outright in Adwick Le street (38.8%), than Carcroft (26.5%). There are more socially rented properties in Carcroft (27.2%), which is considerably higher than the rest of Doncaster. There are considerably fewer properties that are privately rented in Adwick Le street, whilst Carcroft has similar rates to the rest of Doncaster.

The majority of households comprise of single-family units in both Adwick Le Street (64.1%) and Carcroft (64.9%). However, there is a large proportion of one-person households in Adwick Le Street (31.9%) and Carcroft (31.4%). Whilst these rates appear to be in line with the rest of Doncaster, it would suggest social isolation is a priority for Doncaster. Living alone can increase the risk of a number of physical and mental health issues and thus, ensuring these individuals have the support required to live a health and fulfilling life is important.

Anti-Social Behaviour

North locality reported the lowest number of ASB, hate crime and low-level crimes during the first 6 months of 2023/24. Figure 17 shows that Adwick and Carcroft had the highest rates of crime and ASB across the North Locality.



Figure 20. Number of early interventions, ASB, hate crime and low-level crime issues identified and managed at Locality level (Stronger Communities, Doncaster Council 2023/24)

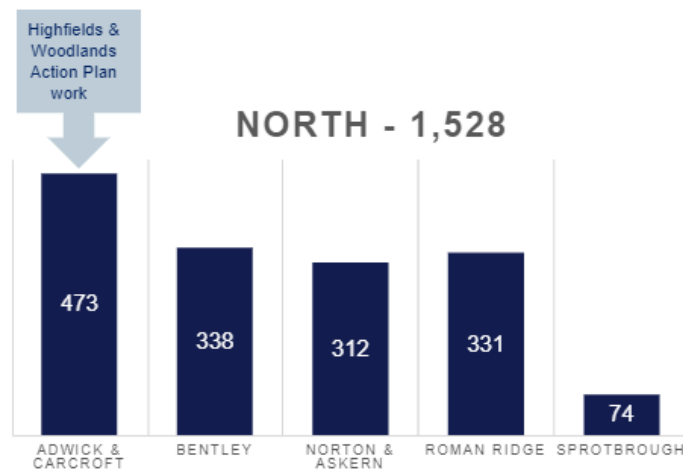


Figure 21. Number of early interventions, ASB, hate crime and low-level crime issues identified and managed at Ward level (Stronger Communities, Doncaster Council 2023/24)

Vulnerable Victims

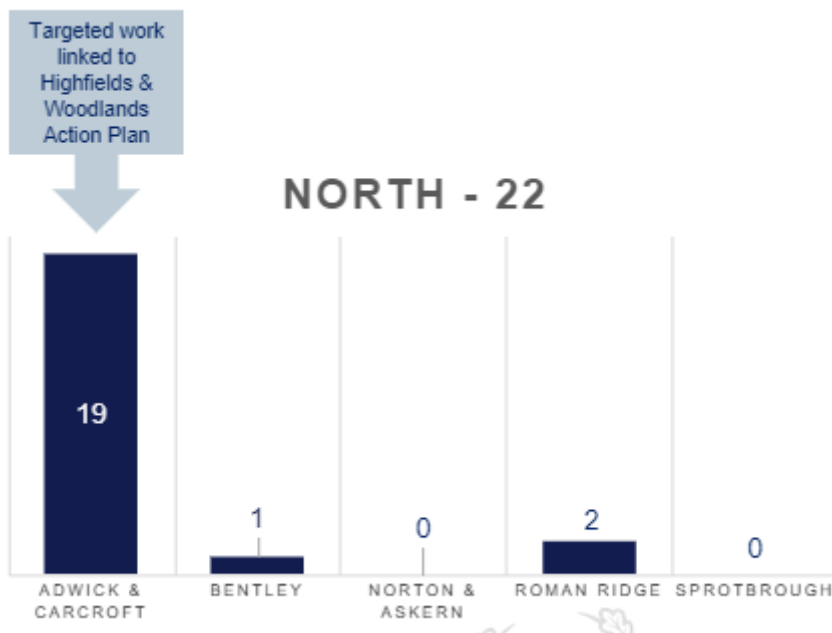


Figure 19. Vulnerable Victims Ward Breakdown (Stronger Communities, Doncaster Council 2023/34)

Adwick and Carcroft have the second highest number of vulnerable victims living within the ward boundaries, the largest number across the North of Doncaster. It must be noted this data only reflect the residents that have been identified and supported by the Stronger Communities team at Doncaster Council, and there may be more residents that have not been identified or supported but fall within this bracket.

Community Insight

Appreciative Inquiry

The Well Doncaster Team undertake an Appreciative Inquiry within communities to gather insight to support co-designing action plans with the community. The AI questions are structured to pull on the successes of the past and present, to seek new potentials and possibilities and build on those through the Dream and Design stages.

The Appreciative Inquiry will include the following steps:

1. **Discovery** – This will involve engagement with the residents of Adwick Le Street and Carcroft to find out what is working well in the community. Responses will be themed to allow priorities of the community to be established.
2. **Dream** – Residents and key stakeholders will be invited to attend an initial workshop to discuss what ideas they have for their community and how these will meet the priorities highlighted in the discovery phase.
3. **Design** – All attendees are invited back for a second workshop to develop an action plan to direct work for the community.
4. **Deliver** – A collaborative way of working and investing resources in working towards to the actions from the previous phase.

Community insight is captured through community conversations in Adwick and Carcroft and is an ongoing process throughout the year. Community conversations are had at various community events, meetings and through day-to-day interactions with residents and other key stakeholders. A thematic analysis has been undertaken on community conversations had with residents and other key stakeholders of such areas thus far. Response have been developed into a thematic framework for Adwick Le Street and Carcroft (Table 5). Work is underway to fully understand these as communities themselves and develop a thematic framework. All themes identified through this process inform community development and engagement activity moving forward.

Theme	Sub theme	Quotes	Commentary
People	Community spirit	C1242: 'community spirit' C1120: 'being part of a close knit community' C1121: 'good people and close knit' C1117: 'very nice community'	Being part of a good community and having good people around was a key factor in resident's perception of their local community. Specifically, having Friends, family and neighbours close by was important to a lot of residents.
	Community support	C1019: 'good neighbours who come together...and they offer support if I need it'	

	Children	<p>C1020: 'we keep an eye on each other'</p> <p>C1021: 'my neighbours and family live here'</p> <p>C1120: 'good support network with my family around me'</p> <p>C1071: 'It's good for the kids'</p> <p>C1117: 'Nice place for my children to grow up in'</p> <p>C1120: 'Children use the park'</p>	
Place	Positive perceptions of place	<p>C1019: 'helps me to feel safe in my home and community'</p> <p>C1171: 'we like living here, it's very nice...very nice community'</p> <p>C1121: 'feel safe and happy here'</p>	<p>People's perception of their local community, including how safe they feel and how 'nice' they view their local area has an impact on how positive someone feels about carcroft.</p>
Community assets	<p>Groups and events</p> <p>Places to go</p>	<p>C1019: 'good neighbours who come together for local events'</p> <p>C1242: 'Community spirit and groups'</p> <p>C1081: '[Bullcroft Memorial] run events for the kids'</p> <p>C1116: 'Great to see an event on here because they used to run regularly...Local things going on that don't cost the earth'</p> <p>C1209: 'Bullcroft services such as the food pantry are vital for me and my family, we love the charity shop too, my son will always pick</p>	<p>Low-cost activities/shops/services (e.g. food pantry) seem to be important to some residents.</p>

	Parks	a toy when we come in' C1071: 'shops and parks' C1081: 'Bullcroft memorial' C1120: 'good shops' C1071: 'shops and parks' C1116: 'Carcroft Park I use a lot' C1120: 'children use the park'	
Accessibility and travel	Proximity amenities Active travel	of C1076: 'amenities in close proximity...don't have to rely on transport for essentials' C1082: 'the shops are close' C1076: 'don't have to rely on transport' C1120: 'nice walks'	Residents feel they have enough community assets in close proximity to feel good about their local area.



Doncaster Talks

In 2019, Doncaster Talks undertook insight across the borough of Doncaster. Responses were separated into wards and thematically analysed. Across the Adwick and Carcroft ward, 207 responses were received. The main themes on what people liked about the area, what could be improved, and what the borough should focus on are displayed in the table below:



Like:

- Good access to local amenities and lot of things to do
- Good community spirit/friendly people
- Good access to parks/greenspace

Improve:

- Cleaner streets – less litter and a better appearance for the area
- Invest in park and green space
- Reduce crime and ASB, in particular quad bikes

Focus:

- Cleaner Streets and less litter
- Tackle crime and ASB issues in the area
- Support services for vulnerable people
- Focus on more jobs and investment in the local area

Locality Plans

Locality plans have been developed by Team Doncaster to look at how we can work together to strengthen communities and improve the lives and opportunities for the residents living there. This plan has been put together with more input and engagement from those living and working in the North locality. Communities have told shared exactly what they want to see change and improve in the areas where they live, and this insight has enabled a workable plan to deliver in conjunction with our communities and partners.



For more information on the North Locality plans, please visit [North Locality Plan 2023 - Draft Version.pdf \(windows.net\)](#)

Community Investment

Table 4. Community Investment across North Locality (Doncaster Council, 2023)

Ward	Total Amount by Ward	Funding Type	Total Amount by Locality
Norton & Askern	£104,900.00	VCFS, Ward Members, Barrier Buster, Community Booster, Active Communities Grant, Community Wealth Builder Support (X4), Locality Commissioning, Holiday Activity Fund, LSCIF Round Two, Community Investment Fund, Community Wealth Builder Grants, Dragon's Den, Ward Members	£804,160.00
Adwick Le Street & Carcroft	£93,710.00		
Sprotbrough & Cusworth	£104,840.00		
Roman Ridge	£45,810.00		
Bentley	£454,900.00		

In the North locality, the sum of investment in community organisations was £804,160.00 as of November 2023 (Power BI, 2023). The main source of grants has been 'Community Wealth Builder Support', followed by 'VCFS Fund and 'Active Communities Grant'.

The top priority for investment in the North was to 'enable positive lifestyle choices including weight management, smoking cessation, physical activity, drug and alcohol misuse', followed by 'children and young people provision', 'support physical activity', and 'community spirit'.

In the Adwick Le Street and Carcroft ward, investment totalled £93,710.00 as of November 2023. In Adwick Le Street and Carcroft, 23 community organisations have received funding including Whinfell Community Hall, Highfields Boxing Club, Upbeat and Steps to Freedom. The top priority for investment in the Adwick Le Street and Carcroft ward was 'enable positive lifestyle choices including weight management, smoking cessation, physical activity, drug and alcohol misuse', followed by 'children and young people provision' and 'increasing sense of community spirit'.

Appendix

Well Doncaster Annual reports

Well Doncaster Approach: <https://youtu.be/e1RKOZoGI10>

More information about how Well Doncaster has been meeting outcomes and objectives can be found in past and present annual report:

<https://welldoncaster.wordpress.com>

Census data 2021

The census is undertaken by the Office for National Statistics every 10 years and gives us a picture of all the people and households in England and Wales.

[Build a custom area profile - Census 2021, ONS](#)

[Census Maps - Census 2021 data interactive, ONS](#)

Public health Data

Public Health Data

Fingertips

This is a new fingertips profile that uses data from Local Health an existing PHE data tool. Local Health is a collection of quality assured health information presented for small geographical areas. By presenting data for small areas, Local Health provides evidence of inequalities within local areas. It supports targeted interventions to reduce such inequalities.

Local Health contains indicators related to:

- Population and demographic factors
- Wider determinants of health
- Health outcomes

It presents data for middle super output areas (MSOA), electoral wards, clinical commissioning groups (CCG), local authorities, and England as a whole.

Please note, as the Local Health tool was designed to allow users to map small area data, a mapping option has not been provided in this profile.

<https://fingertips.phe.org.uk/profile/local-health/data#page/0>

[Local Health - Public Health England - Reports: get a dashboard on a custom area](#)

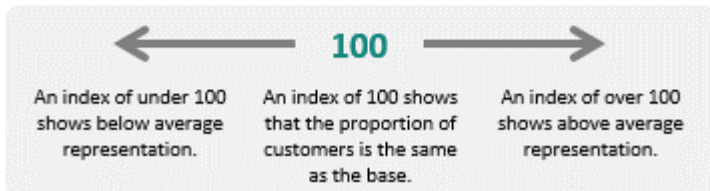
Acorn profiles

Wellbeing Acorn segments the population into 4 groups (Health Challenges; At Risk; Caution; Healthy) and 25 types describing the health and wellbeing attributes of each postcode across the country. By analysing significant social and health related behaviour, it provides precise information and an in depth understanding of upstream issues affected by current lifestyle traits

INTERPRETING THE REPORT

The Wellbeing Acorn profile report helps you understand the underlying demographics, lifestyle and health attributes of your customers and service users by comparing their Wellbeing Acorn profile to a base (e.g. UK population, area or other customer groups).

INDEX



The Wellbeing Acorn Profile contains 12 variables that are indicators of Disability or Infirmary in the population and 9 variables related to unhealthy Behaviours. The average score measured against the base profile of Yorkshire and the Humber is 100. A value above 100 indicates that the area population is overrepresented for this characteristic, below 100 the value is less than the average or underrepresented.

Get Doncaster Moving survey

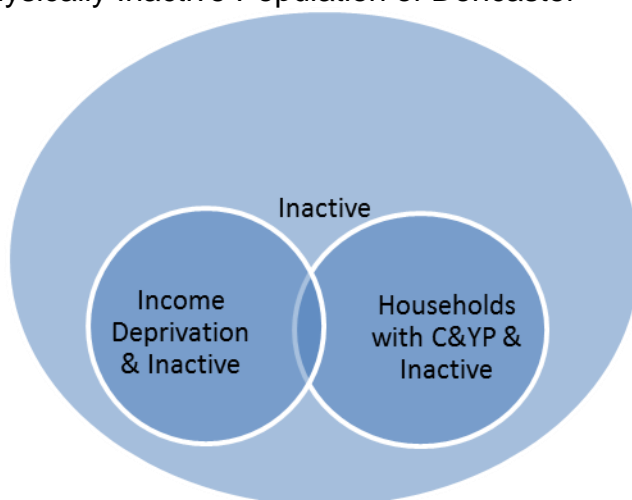
<https://getdoncastermoving.org/uploads/behavioural-insight-phase-one-summary-report.pdf?v=1644581925>

Mosaic data

Mosaic Public Sector classifies the UK population into one of 66 types and 15 groups through a detailed and accurate understanding of each citizen's demographics, lifestyles, behaviours and location.

The Physically Inactive Population of Doncaster

The Physically Inactive Population of Doncaster



The MOSAIC types who “Do not exercise” and “Do not take part in Sport” were searched and three priority groups have been identified through work with strategic partners as part of the development of Doncaster’s Physical Activity Strategy. The three priority groups are:

- The Inactive
- Families with children and young people
- People living in income deprivation

These groups are cross-referenced against the inactivity list allowing for the identification of MOSAIC types which are both likely to be inactive and living in deprivation as well as inactive and from households with children and young people. Link to the Get Doncaster Moving strategy; [Let's Get Moving! | Get Doncaster Moving](#)

Pupil Lifestyle Survey 2022

[Pupil Lifestyle Survey - Healthy Schools \(healthylearningdoncaster.co.uk\)](http://healthylearningdoncaster.co.uk)

Power BI – Joint Strategic Needs Assessment

The Joint Strategic Needs Assessment (JSNA) is a process that identifies the current and future health and wellbeing needs of a local population. The dashboards show information about the employment, health, and wellbeing of people in Doncaster. We use this information to inform our policies and strategies to improve the lives of everyone in the Doncaster area.

[Joint Strategic Needs Assessments - Team Doncaster](#)

