

Askern, Norton & Campsall Community Profile Well Doncaster



Well Doncaster

Community Led Health and Wealth

Empowering people in Doncaster to live better, healthier, and happier lives.

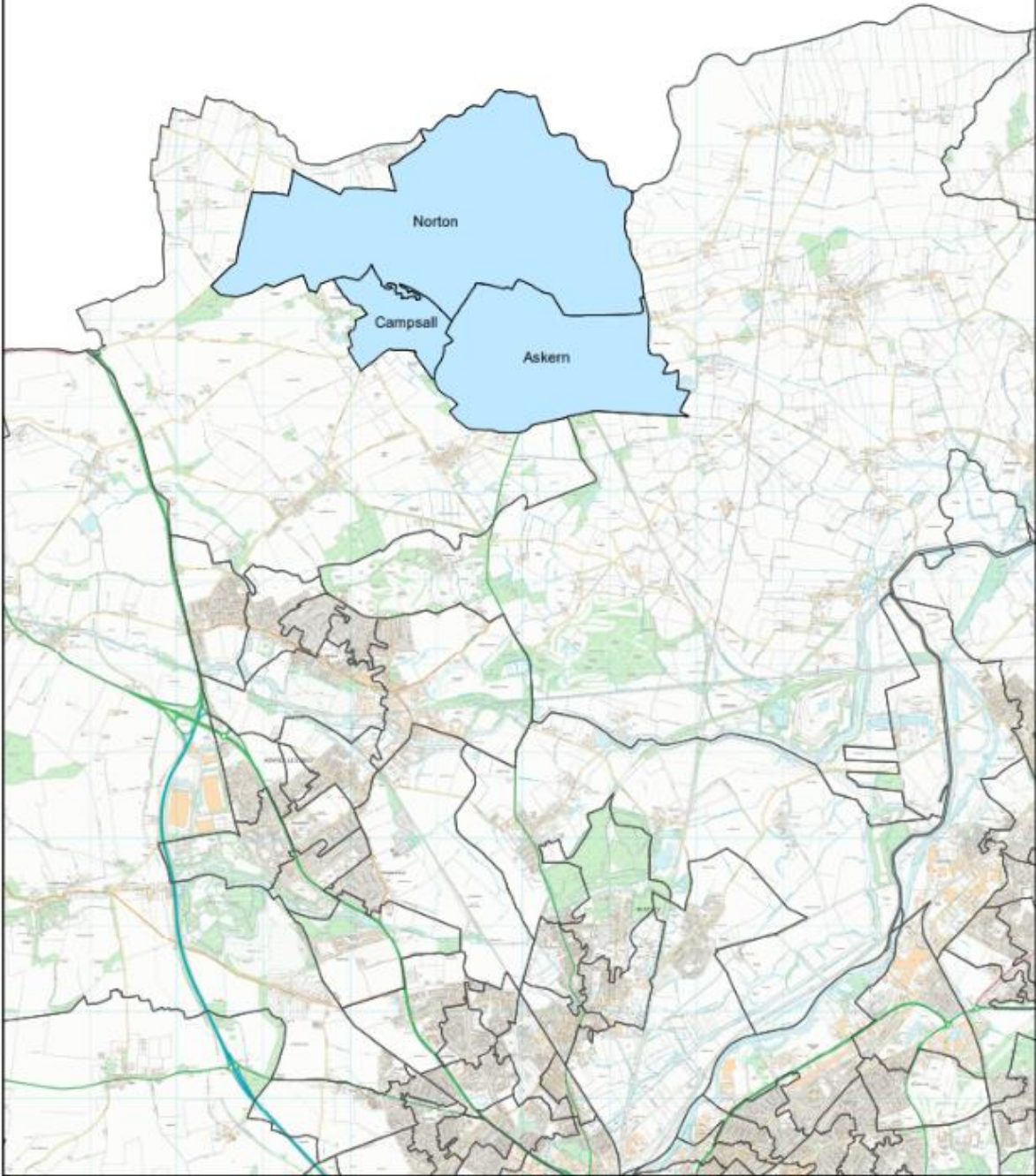
www.welldoncaster.uk

Well Doncaster
**Community
Wealth Builder**

Well Doncaster
Be Well

 **City of
Doncaster
Council**

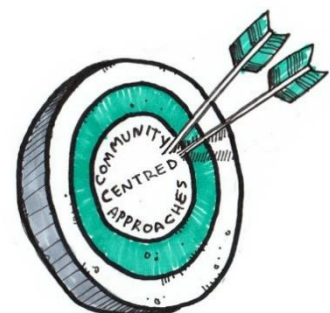
Community



This Report

This report focuses on Askern, Norton and Campsall communities, part of the Askern and Norton ward, situated in the North of Doncaster.

The report begins with a one-page summary outlining key information and priorities about Askern, Norton and Campsall. The document builds on the initial community profile of 2021 and updated figures have been included where possible. This report shows the initial conversations with communities, including ward members, community organisations, faith groups, residents and other organisations who work in the area. Communities' knowledge of their own areas enables them to identify their strengths and the assets on which they can build on. This document is shared with the intention of supporting those conversations and sharing information that might not be readily available to local people.





73% of KS2 children reached expected reading, writing & maths



28% of residents do not hold any qualifications



Respiratory diseases are leading cause of deaths



25.7% of residents are living alone



Over 96% identify as 'White' and English is their first language



High levels of inactivity amongst children & adults

Askern



28% of residents do not hold any qualifications



28.6% of households in **Istonville** are unable to warm their homes to a reasonable standard



24.3% report their health to be fair, bad or poor



31.3% of residents are living alone



Over 96% of residents identify as 'white' and speak English as their first language



High levels of inactivity amongst children & adults

Campsall



**Lowest
attainmnt
scores in North
Doncaster**



**64.1% of
residents are
unemployed**



**2nd highest
rates of alcohol
admissions in
Doncaster**



**26.8% of residents
are living alone**



**Over 96% identify
as 'White' and
English is their first
language**



**High levels of
inactivity amongst
children & adults**

Contents

This Report.....	3
One page Summary	9
Key Health Priorities	9
Assets	11
Asset Maps	11
Assets in the Community	19
Population Health Management.....	19
Ward Members	23
Health and Wealth.....	24
Deprivation.....	24
Wealth Inequalities.....	25
Fuel Poverty.....	25
Older People living in Poverty (IDAOP)	26
Food Poverty	26
Employment.....	27
Citizens Advice Doncaster Borough.....	28
Childhood Development.....	28
Education.....	28
Obesity levels	29
Fruit and Vegetable Intake.....	29
Hospital Admissions	29
Health Inequalities	30
Long term Health Conditions	30
Alcohol.....	31
Smoking.....	32
Life expectancy.....	33
Causes of Death	33
Loneliness and isolation	34
Physical Activity	35
Active Travel	36
Green Spaces and Parks.....	36
Community Information	37
Population.....	37
Population Size:.....	37

Ethnicity and Language	37
Age Profile	37
Housing.....	38
Anti-Social Behaviour.....	39
Community Insight.....	40
Appreciative Inquiry	40
Doncaster Talks	42
CABD	42
Stronger Families.....	42
Crime/ ASB (SC).....	42
Vulnerable Victims (SC).....	42
Wellbeing Service	42
Locality Plans.....	43
Community Investment	43
Appendix	45
Well Doncaster Annual reports	45
Census data 2021	45
Public Health Data	45
Acorn profiles	45
Get Doncaster Moving survey	46
Mosaic data	46
Pupil Lifestyle Survey 2022	47
Power BI – Joint Strategic Needs Assessment.....	47

One page Summary

Norton and Askern ward is located in the North locality of Doncaster and comprises of three smaller communities: Norton, Askern and Campsall. As a ward, levels of Deprivation are high, but this does differ between communities. A large proportion of the ward population are not in employment and are economically inactive and this is considerably greater than Doncaster and England. The ward does not appear very diverse in ethnicity and languages spoken with the majority of residents identifying as 'white' and reporting their first language as English.

The proportion of residents with poor health in Norton and Askern is considerably greater than the national average. A large proportion of residents are registered disabled. Rates of deaths are significantly higher across the ward, particularly preventable deaths amongst those aged 75 and under. Incidences of all cancers remains one of the leading health conditions residents are living with in Norton and Askern ward. Hospital admissions for those living with limiting illnesses or health conditions largely associated with poor lifestyle choices are significantly higher across Askern and Norton ward. Admissions associated with alcohol incidences and myocardial infarctions (heart attacks) in Norton and Askern are a cause for concern, with higher rates than Doncaster and England.

Askern

Askern is the most deprived community within the ward, sitting amongst the top 15 most deprived communities in Doncaster. It has a younger than average population with more school aged children living in Askern. Askern has the highest rates of residents with poor health. It is home to Lakeside Park situated alongside Askern Lake Askern is also home to Warren House Park. It is also surrounded by acres of woodlands areas.

Norton

Norton has the lowest proportion of residents reported to have poor health, but levels remain higher than average. Norton's population is considerably older, with fewer children and work age adults residing in the community. Norton Parish Council playing fields is the main green space in Norton. There are three smaller areas with play equipment for children in Norton situated behind the School Boy Pub, West End Road and Ryecroft community rooms.

Campsall

Campsall is the smallest village in the ward It is the least deprived community in the ward and one of the least deprived in Doncaster. There are similar rates of poor health when compared to Askern and Norton. Norton's population is considerably older, with older aged adults and fewer school children and work age adults residing in the community. Campsall is home to Doncaster future park Campsall Country.

Key Health Priorities

- Hospital admissions for those living with limiting illnesses or health conditions largely associated with poor lifestyle choices including CHD, Myocardial Infarctions, Stroke and COPD.

- Obesity levels amongst school aged children at reception and year 6
- Alcohol intake and hospital admissions associated with alcohol consumption

Assets

Well Doncaster uses a community-centred approach which allows investment in supporting, working with and empowering communities to facilitate healthier communities. The voice and role of our communities and taking a strength/assets-based approach to work with individuals, families and communities is crucial to the achievement of our overall vision.

Asset Maps

The maps below show different types of assets across Woodlands. These maps have been developed using LSOA data and should highlight what each community has to offer. It should be noted that these maps are a starting point in understanding the community and that further work is needed amongst the community to understand all the assets and how they are used.

Askern

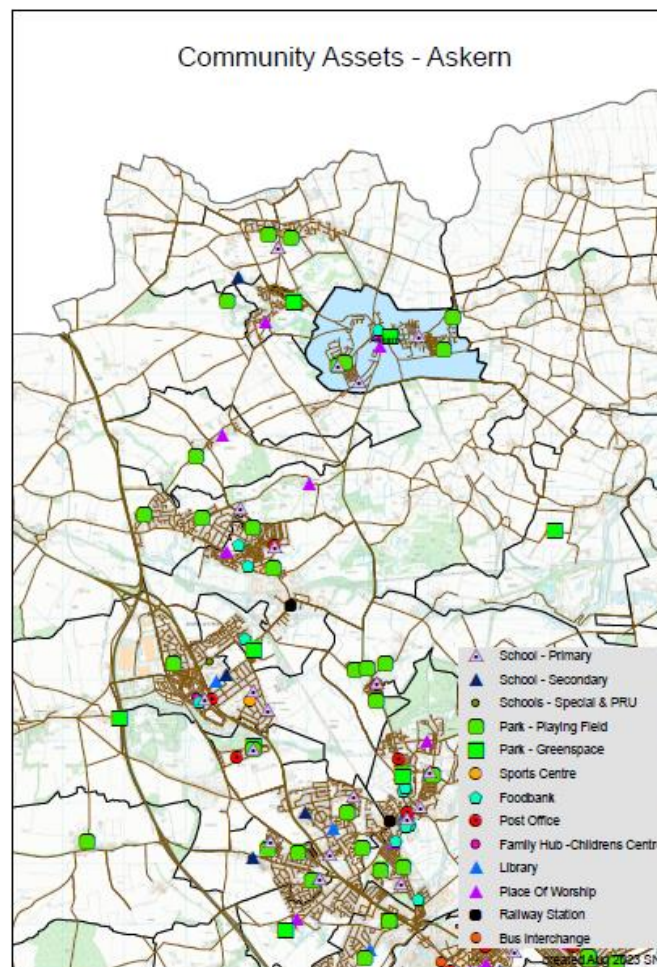


Figure 1. Askern Community Assets

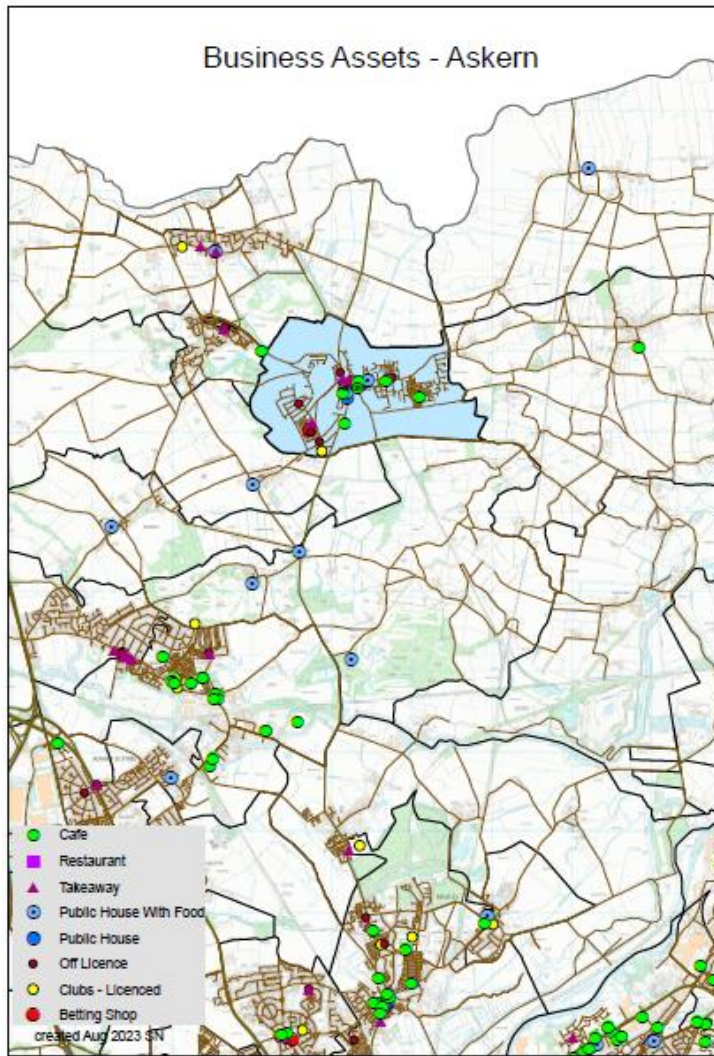


Figure 2. Askern Business Assets

Norton

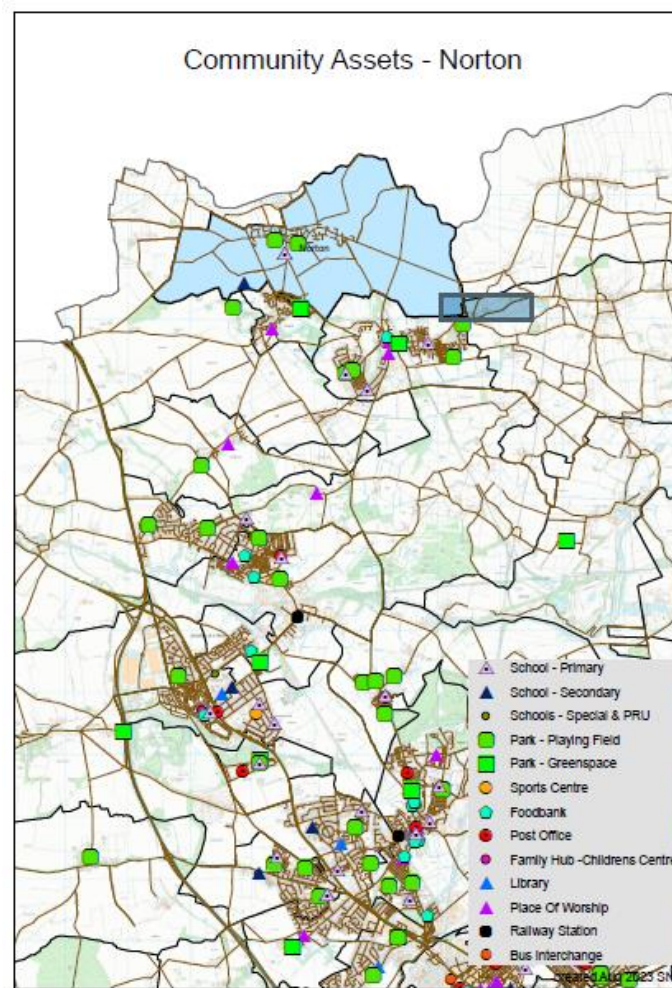


Figure 3. Norton Community Assets

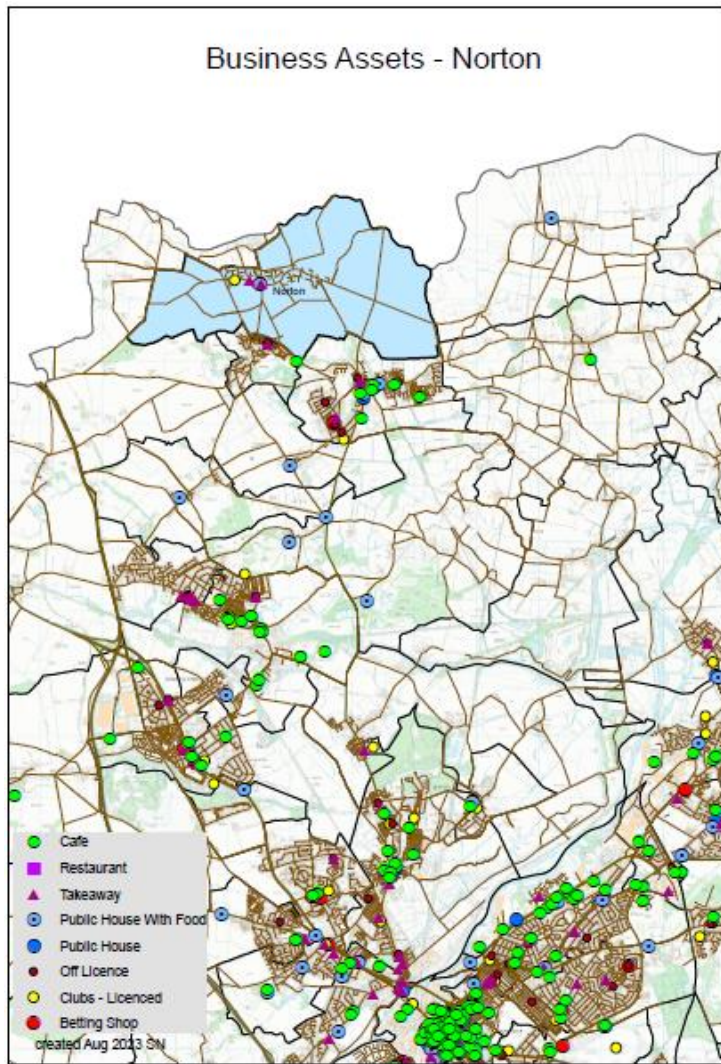


Figure 4. Norton Business Assets

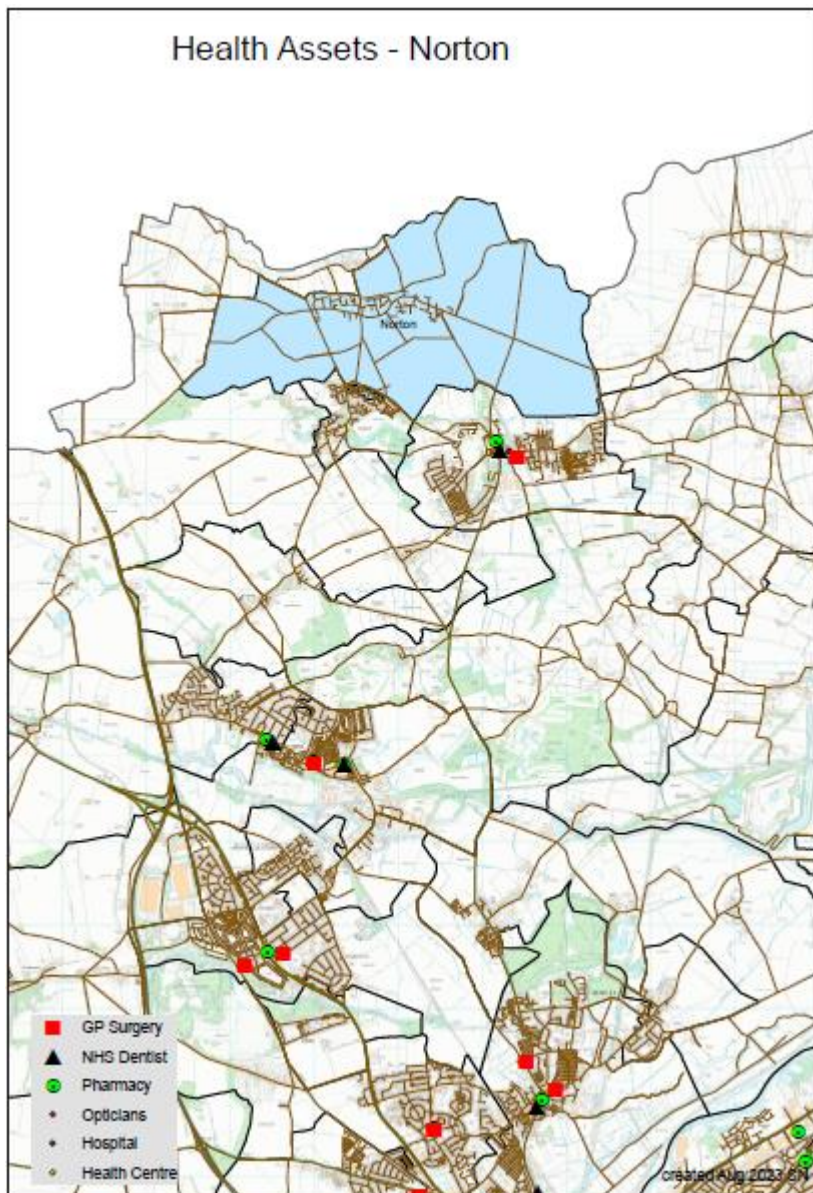


Figure 5. Norton Health Assets

Campsall

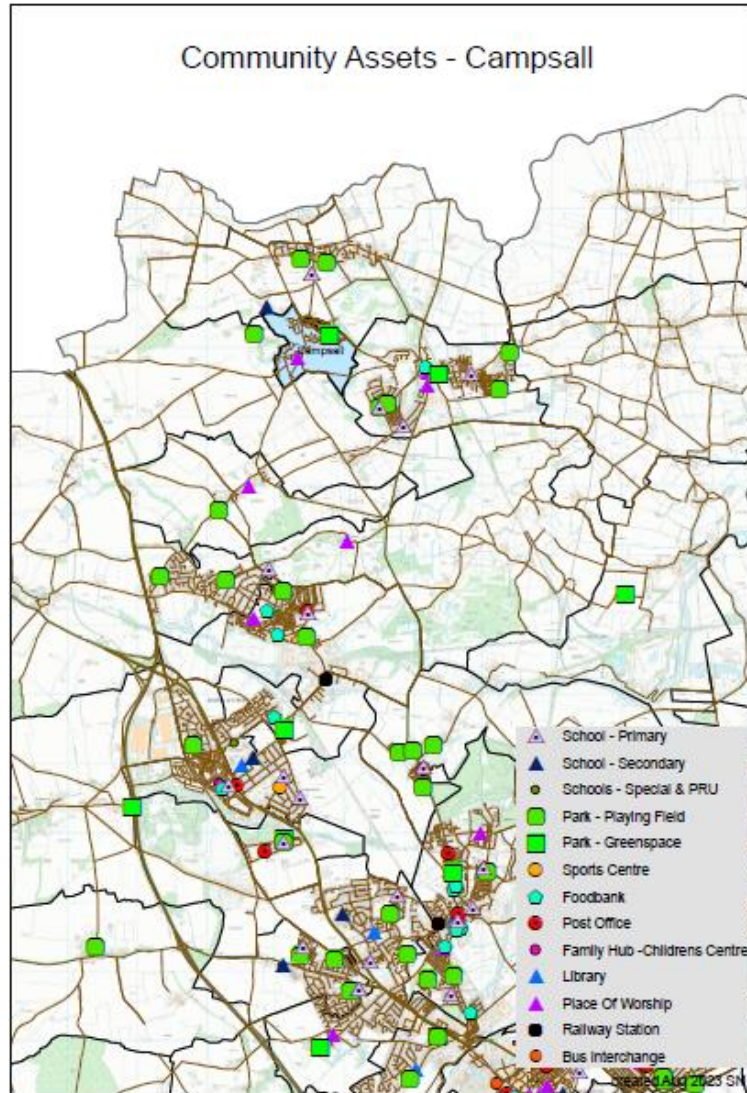


Figure 6. Campsall Community Assets

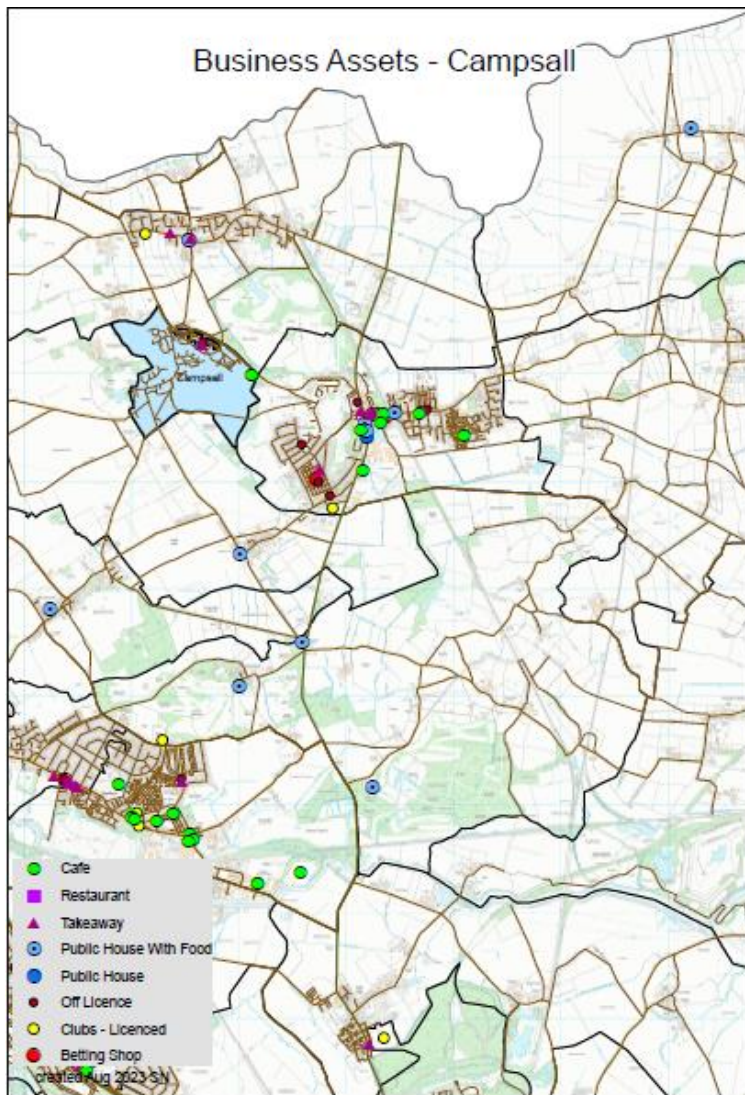


Figure 7. Campsall Business Assets

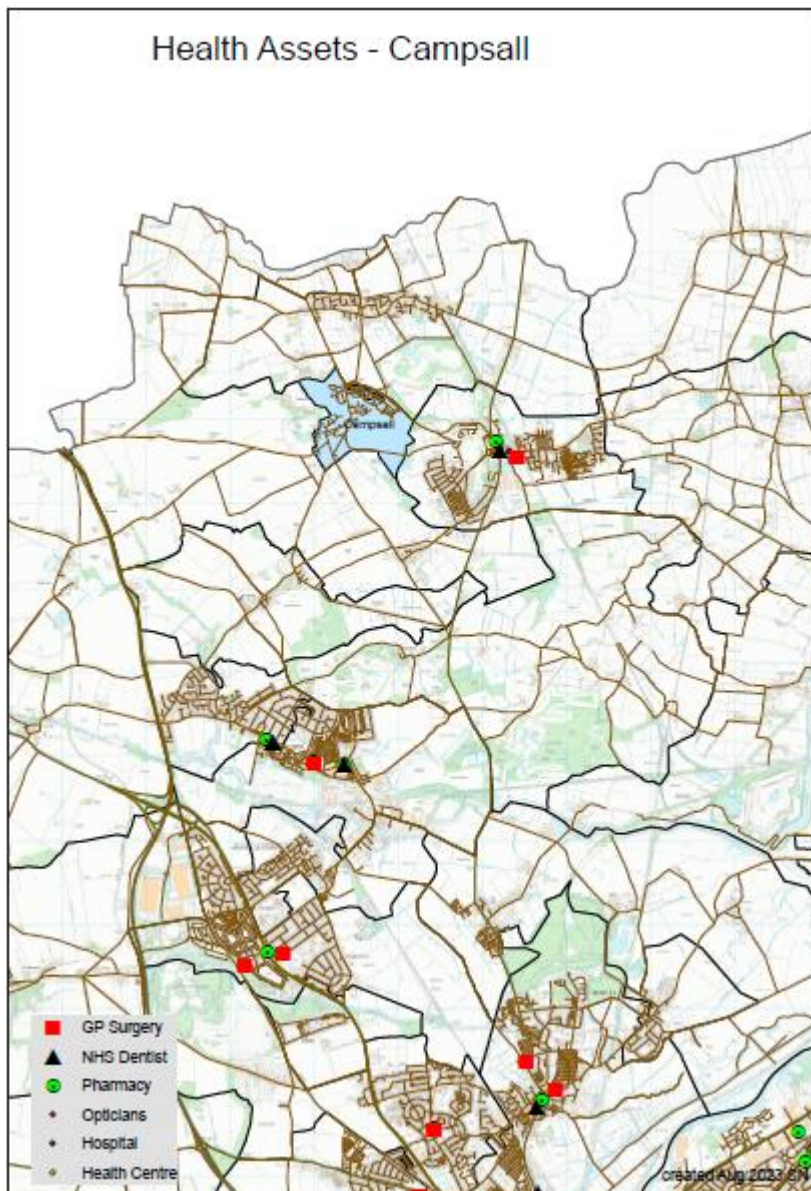


Figure 8. Campsall Health Assets

Askern is the most asset rich area in this ward. It is home to a GP, dentist and pharmacy for all residents in this ward. It has four local parks in the community: Meadow View, Eden Drive, Alfred Road and Warren House Park. It is also home to Askern Boating Lake. There are three local schools, a church and a foodbank that offers essential services to residents. There are more employment opportunities in Askern with a number of cafes and restaurants open.

In comparison, Norton community appears quite isolated. There are three playing fields: Campsmount Park, The Schoolboy Hotel and West End Road. The only business assets are a pub and café. There are no health assets in the local village but there is a primary and secondary school within the boundaries.

Similarly, Campsall is a rural village situated between Norton and Askern. It is highly surrounded by country land and marshes. The biggest asset to this village is the Campsall Country park which hosts woodland areas, play areas, fishing, playing fields

and spaces for a picnic. Campsall is also home to a church and local takeaway and café. The nearest GP, dentist and pharmacy is located in neighbouring village, Askern.

Assets in the Community

Population Health Management

It is vital to understand the effect and direction the pandemic and cost of living crisis is having on community organisations in the ward so that appropriate and targeted support can be offered, and work can be implemented to manage any gaps or risks associated with changes. To support the former, Well Doncaster officers undertake regular population health management insight with community organisations, identifying their current status and needs, and work with each group and partners to meet their goals. This is a living document and will be updated and adapted as needs are met and change. If you would like more detail on this, please contact welldoncaster@doncaster.gov.uk



INDIVIDUALS (Key Individuals within the community and why)	ASSOCIATIONS Local Groups/Clubs	STORIES (Good news stories)
Askern		
Ward Members <ul style="list-style-type: none"> • Iris Beech • Austen White • Thomas Noon • MP Ed Miliband Community Members <ul style="list-style-type: none"> • Shakers board members • Librarian • Town Mayor Professionals <ul style="list-style-type: none"> • Communities Team • Well Doncaster • Early Years • Doncaster Children's Services Trust • Family Hub • St Leger 	Support: <ul style="list-style-type: none"> • St Peters Church Foodbank (ran by Askern CRY) Physical Activity/Sports: <ul style="list-style-type: none"> • Askern Welfare Cricket Club • Askern Miners Football Club • Snooker and Pool Teams (Askern Miners) • Askern District Running Club • Doncaster Ramblers (local walking group covering Askern area) Community groups:	<ul style="list-style-type: none"> • Askern CRY, part of St Peters Church in Askern was an already established foodbank and have adapted and coped admirably with the increase in demand since Covid-19. It supports residents of Askern, Norton and Campsall and runs every Thursday 11am - 1pm. It offers a delivery service for those who are isolating/shielding and cannot collect food • This annual outdoor festival at Thornhurst Manor has been

<ul style="list-style-type: none"> • School Head Teachers • PSCO • Primary Care Network • Social Prescribing Team • Localities Team 	<ul style="list-style-type: none"> • Askern CRY (Community Reaching You) • Askern Community Library (in addition to standard library services there is a history book club, an events calendar, computer workshops and links to online learning courses) • Hatfield and Askern Colliery Band (Askern Miners) • 19th Doncaster Askern Scout Group • Askern ward community partnership (Shakers) • Askern Music Festival • Friends of Askern Lake • <p>Groups run by / at Askern Family Hub- Askern</p> <ul style="list-style-type: none"> • Empowering Parents, Empowering Communities (EPEC) group • Tea and Toast sessions • Sing and Sign sessions • Rising Rockets • Mini Movers • Shake, rattle and move • Virtual First Friends • Let's Cook Together 	<p>running since 2015. It provides local residents with the opportunity to come together and celebrate local artists. This is a positive, fun and family-friendly event that many residents have enjoyed over the years</p> <p>Co-op local community fund - Askern co-op branch continues to run its local community fund, which can make a real difference to groups in Askern. Currently the three groups in the Askern store are Askern CRY, Scouts and Friends of Askern Lake</p>
Campsall		
	<p>Physical Activity/Sports:</p> <ul style="list-style-type: none"> • Evolution Mixed Martial Arts 	

	Organisations: <ul style="list-style-type: none"> • Friends of Campsall Country Park • Campsall art group 	
Norton		
	Community groups: <ul style="list-style-type: none"> • Norton Chat N' Do 	



Institutions (Schools/colleges etc.)	Physical space (Parks, carparks etc.)	Local Economy (Local profit businesses)
Askern		
Health/Care Services: <ul style="list-style-type: none"> • White Wings Centre (The Lakeside Practice and Askern Medical Practice) • Bupa Dental Care (Market Place, Askern) • Moorhouse Opticians Ltd • Boots Pharmacy Places of Worship: <ul style="list-style-type: none"> • St Peters Church • Rock Of Ages Evangelical Church • Blessed English Martyrs RC Church • Light and Life Doncaster Education: <ul style="list-style-type: none"> • Askern Moss Road Infant School 	Parks: <ul style="list-style-type: none"> • Askern Boating Lake / Lakeside Park • Askern Hill • Alderwood Fishery (Fishpond) • Warren House Park • Alfred Road Allotment • Eden Drive Public service buildings: <ul style="list-style-type: none"> • Askern Spa Spiders Family Hub • CAB Debt Advice Pod • Askern Library • St Leger halls: Norbreck Communal hall, Westfield crescent communal hall Leisure: <ul style="list-style-type: none"> • Askern Miners Welfare Club 	Shops: <ul style="list-style-type: none"> • Co-op • Boots • Aldi • Heron Foods • Supersave • Moss Road News • Sutton Road Stores • Go Local • The Flower Shop • Get in the Spirit • Auto Discount Centre • The Salvation Army • Askern Pet Essentials • Jay's Animal Feeds Other: <ul style="list-style-type: none"> • Askern Post Office • Askern Lake Market and Car Boot • R Rated Mechanics • Premier Bikes Ltd • Rickell Car and Commercial • White's Garage


<ul style="list-style-type: none"> • Askern Littlemoor Infant Academy • Spa Academy Askern, Primary School • Burrows Nursery Askern (In Askern Family Hub) 	<ul style="list-style-type: none"> • Askern Greyhound Stadium <p>Physical Activity/Sports Facilities:</p> <ul style="list-style-type: none"> • Askern Cricket Club 	<ul style="list-style-type: none"> • K&M Computer Services Limited • Yorkshire Cable Drums and Packing <p>Food/Beverage:</p> <ul style="list-style-type: none"> • Happy Cat Café • Cooplands • Atkinson and Teasdale Bakery • Filla • C & A Wain Family Butchers • Vebiro • Moss Road Farm Shop • The Top Shock • The Woodshack Askern • Poseidon Fish Bar • Sutton Road Golden Cod • Askern Grill • Wood Shack • Punjab Indian • Man Wah Chinese Takeaway • Chillys of Askern • The White Hart • Red Lion (currently closed) • The Crown Hotel • Askern Service Station (Spar and Subway)
Norton		
		<p>Norton</p> <ul style="list-style-type: none"> • Obsidian K9, The Lodge (dog training)
Campsall		
<p>Education:</p> <ul style="list-style-type: none"> • Campsmount Academy, Secondary School 	<p>Leisure:</p> <ul style="list-style-type: none"> • Askern Leisure Centre (offers gym) 	

Pre-School provision: <ul style="list-style-type: none"> • Deery Me's • <i>1 other with identifiable name</i> 	fitness classes, swimming lessons) <ul style="list-style-type: none"> • Campsmount Gym (open to pupils and the public) Parks: <ul style="list-style-type: none"> • Campsall Country Park 	
---	--	--

Ward Members

The Norton and Askern ward has three ward members who were elected in 2021.

Norton and Askern



Councillor Iris Beech

Norton and Askern
Labour



Councillor Thomas Noon

Norton and Askern
Conservative



Councillor Austen White

Norton and Askern
Labour

Health and Wealth

Health inequalities are avoidable differences across the population, and between different groups within society. Health inequalities arise from the conditions in which we live, work and play. These conditions influence our opportunities for good health, how we think, feel and act, therefore shaping our health and wellbeing.

Deprivation

Evidence shows that people living in our most deprived areas face the worse health inequalities in relation to health access, experiences and outcomes. Deprivation covers a range of issues and refers to unmet needs caused by a lack of resources, including but not limited to finances, housing and education. It is measured in different ways including the Indices of Multiple Deprivation (IMD).

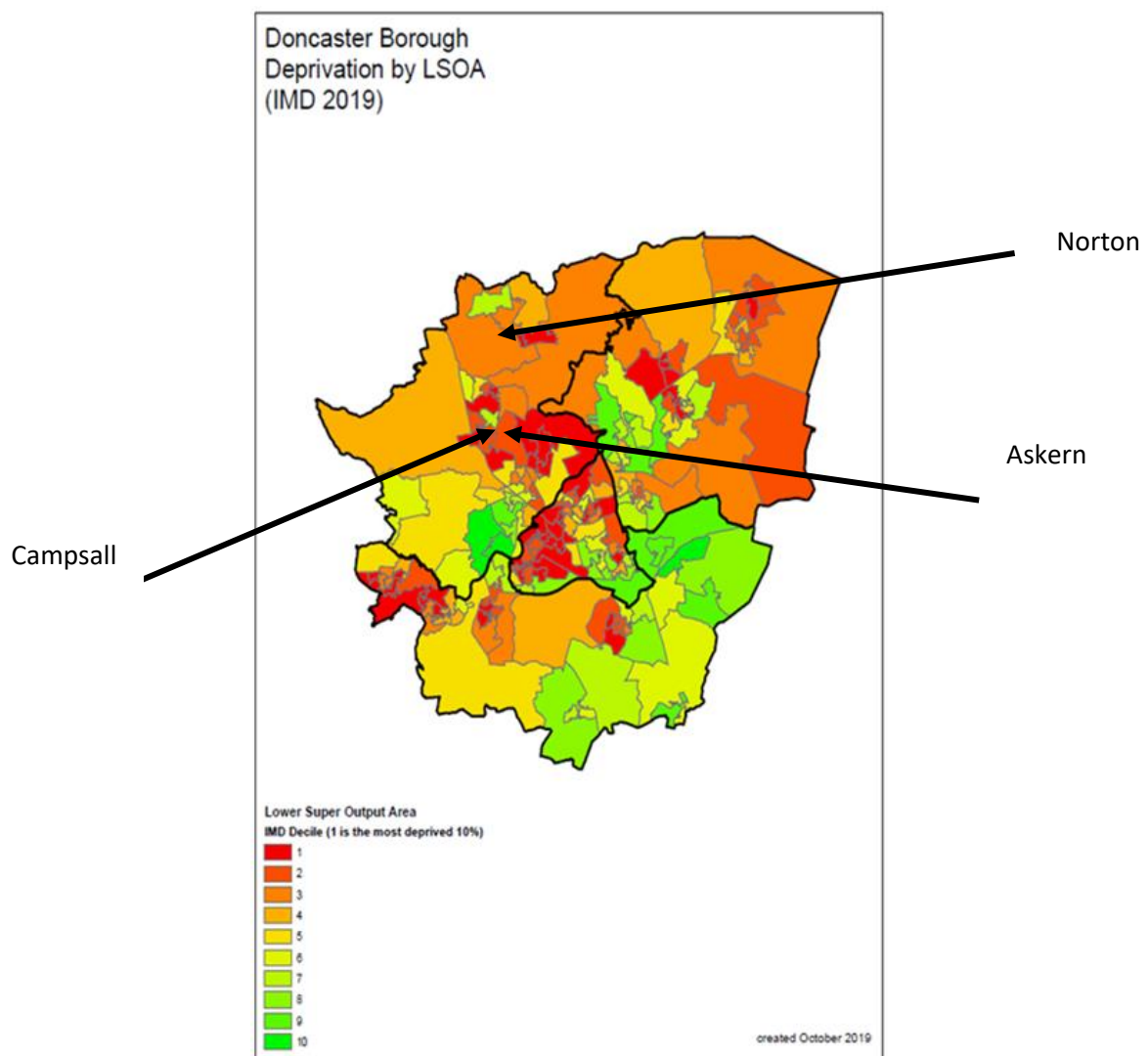


Figure 9: Deprivation by LSOA

The map above illustrates Askern as one of the most deprived communities in Doncaster. IMD data shows Askern (40.05) is now the fifteenth most deprived area in Doncaster, whilst Campsall (28.63) remains in the top 40 and Norton (16.55) top 70 most deprived communities.

Wealth Inequalities

Many Askern, Norton and Campsall residents are currently living in poverty, which reflects the high level of multiple deprivation amongst communities. As a ward, over 31% of residents are living in deprivation. However, it must be noted that poverty rates do differ between communities and given that this data is taken at ward level, it may not highlight the overall poverty rate in Askern, Norton and Campsall communities and the difference between each.

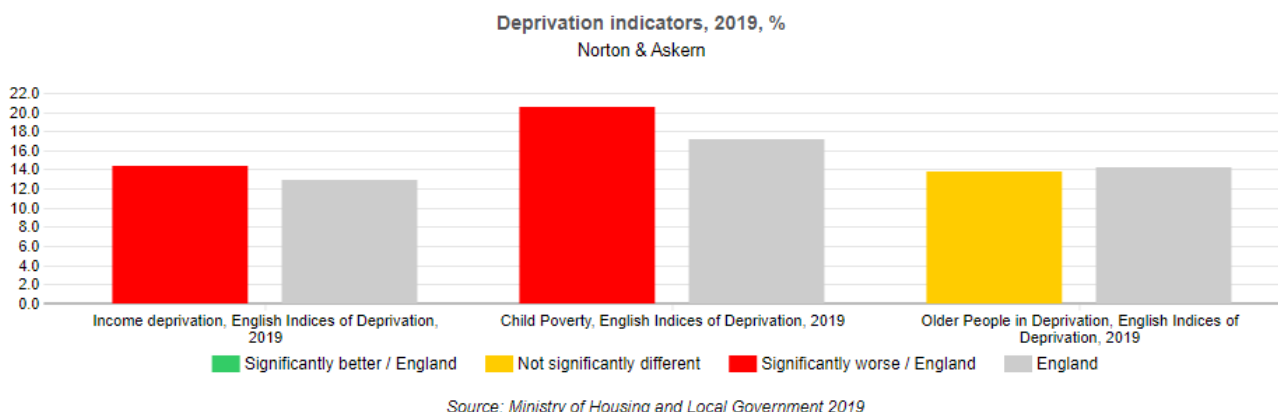


Figure 10. Deprivation indicators in Adwick and Carcroft compared to England (Public Health England, 2019)

Public Health England (2021) data shows there is a higher proportion of residents in Askern, Norton and Campsall ward (16.7%) living in deprivation due to low income compared to the Doncaster (16.6%) and national average (12.9%). It should be noted that this data reflects levels of both unemployment rates and working-age adults on low earnings.

Fuel Poverty

Table 1. Rates of Fuel Poverty at LSOA level in Norton & Askern ward (Office of National Statistics, 2022)

LSOA Code	LSOA Name	Community Name	Number of households	Number of households in fuel poverty	Proportion of households fuel poor (%)
E01007469	Doncaster 005B	Skellow Hall Area	539	71	13.2
E01007487	Doncaster 002A	Campsall	718	107	14.9
E01007488	Doncaster 002B	Moss and Kirk Bramwith	716	115	16.1
E01007489	Doncaster 002C	Askern Town North	957	162	16.9
E01007490	Doncaster 002D	Burghwallis	720	123	17.1
E01007491	Doncaster 002E	Instoneville	682	195	28.6

E01007492	Doncaster 002F	Askern Town South	747	151	20.2
E01007493	Doncaster 002G	Norton	735	95	12.9
E01007625	Doncaster 004A	Fishlake & Forsterhouses	616	86	14

Many residents are also living in fuel poverty. Fuel poverty is defined as a household living on a lower income that is not deemed reasonable enough to warm a home sufficiently. According to fuel poverty by Parliamentary constituency, North Doncaster has the highest rates of fuel poverty (19.1%) in comparison to Don Valley (15.4%) and Central Doncaster (18.1%). According to the National Office of Statistics (2022), Instoneville has the highest percentage of households living in fuel poverty when compared to other LSOA areas within the ward.

Older People living in Poverty (IDAOP)

Older people living in poverty (IDAOP) is another area of concern. In Askern, Norton and Campsall ward, 17.1% of older people are currently living in deprivation as a result of income deprivation. Such poverty can also have detrimental effects on child development. The Income Deprivation Affecting Children Index (IDACI) shows that 22.5% of children are living in households affected by low incomes compared to Doncaster (22.7%) and England's (17.1%) average (ONS, 2021).

Food Poverty

There are 8 active foodbanks in the North locality of Doncaster. Askern CRY is the only foodbank available for Askern, Norton and Campsall residents. Cost of Living Crisis, Low income, Benefit Changes, Debt and Benefit delays are the top 5 reasons for residents accessing support from foodbanks across Doncaster. Figure 5 shows demand for food support has increased since April 2022 across North of Doncaster. An average of 164 adults are supported by food parcels every month in North of Doncaster, whilst 97 children are supported by food parcels every month. It must be noted that this data does highlight where residents are accessing support, and therefore it is unknown where food poverty is more prevalent.

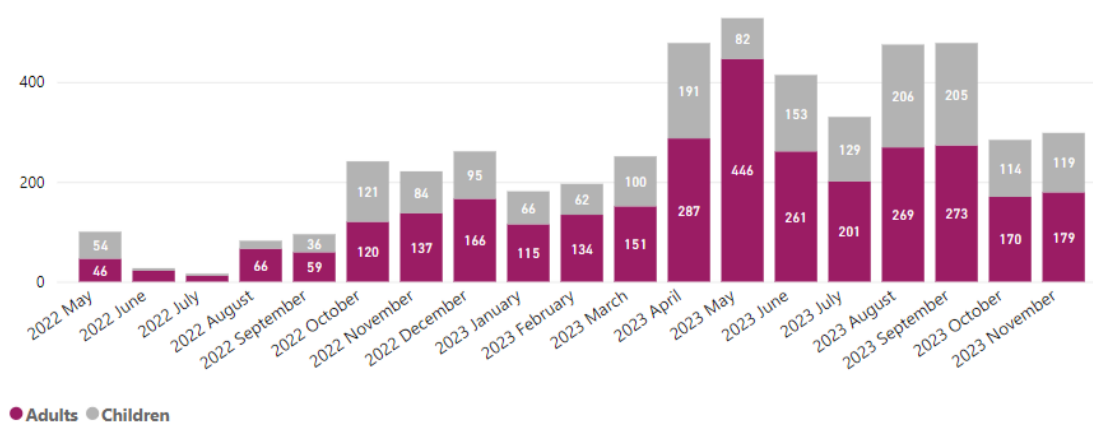


Figure 11. Number of Adults and Children accessing foodbanks in North of Doncaster (2023)

Employment

According to the Census (2021) at ward level, over half of the population (64.1%) are not in employment and have not worked in the last 12 months, with 24.8% of these residents having never worked in comparison to the average of England (5%) and Doncaster (6.1%). This is also reflected in the high proportion of residents aged over 16 years of age (42.2%) who are economically inactive in comparison to England (39.1%). When comparing communities, Norton, Askern and Campsall have relatively similar rates of unemployment, economic activity and long-term unemployment (figure 10). Given the coronavirus pandemic was declared in early 2020 and this data was taken across 2021/22, rates of short-term unemployment may reflect the increased levels of job losses during this time. Work should be undertaken to increase residents' career aspirations and employability skill sets to improve employment chances.

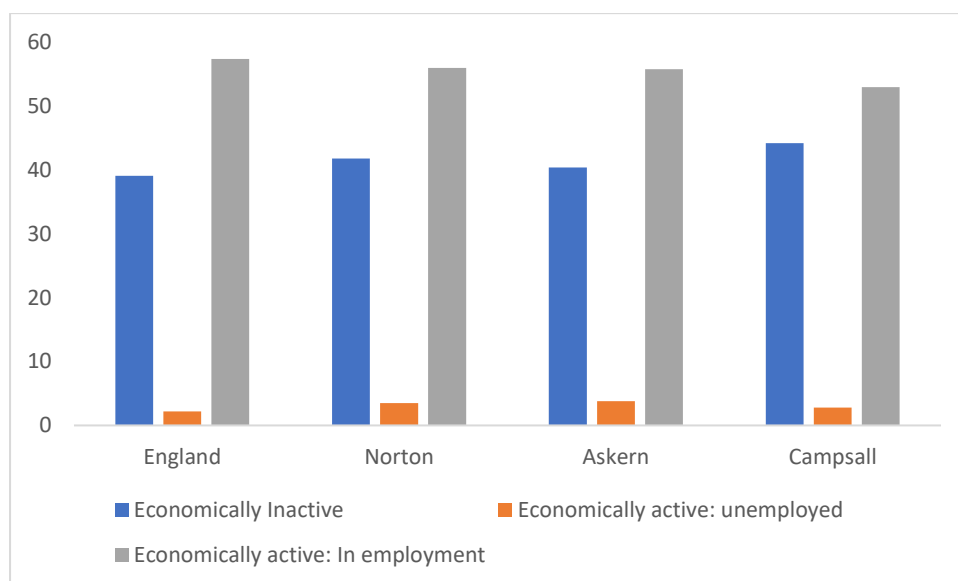


Figure 12. Economic Status of residents (Census 2021)

According to the Census (2021), the majority of residents hold a level 1,2 or 3 qualification (44.3%). The percentage of residents holding a level 4 qualification or above sits at just 24%, significantly lower than the England average (33.9%). Residents in Norton and Askern who have no qualifications (23.1%) is higher than Doncaster (22.7%) and England (18.1%). The distribution of such data varies across each community. Askern has the highest rate of residents without any qualifications (28%), compared to Campsall (20.2%) and Norton (21.2%). Additionally, Askern also has the lowest proportion of residents that hold a level 4 qualification or higher (12.9%), compared to Campsall (25.4%) and Norton (24.8%).

The highest proportion of people in Askern, Norton and Campsall are employed in elementary occupations (20.4%), which is higher than Doncaster (16.5%) and England (10.5%). Those working in high skilled occupations such as managers directors and officials (Askern: 7.7%, Campsall: 11.5%, Norton: 12.6%) and professional occupations (Askern: 9%, Campsall: 11.5%, Norton: 14.3%).

Citizens Advice Doncaster Borough

Citizen's Advice Doncaster Borough (CADB) are an independent charity and part of the Citizens Advice Network across England and Wales. They provide free, confidential, and impartial advice and campaign on money, benefit, housing or employment issues affecting people's lives. There are 89 residents living in Norton and Askern currently accessing CADB. During the 2023/24 fiscal year, Norton and Askern has the 4th highest number of interactions with CADB in the North of Doncaster. Benefits and tax credits, debt, utilities and communications, benefits and universal credits and housing issues are the top 5 issues when seeking support.

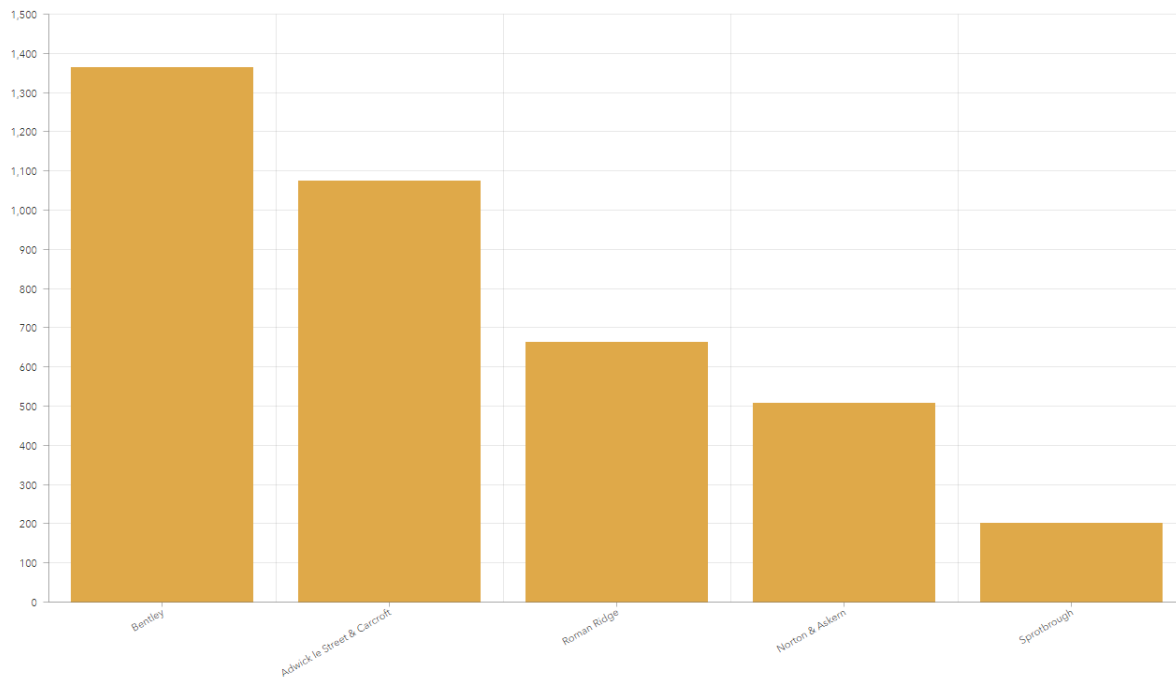


Figure 13. number of interactions with Citizens Advice Doncaster Borough (CADB) during fiscal year 2023/24

Childhood Development

A child's early experiences are vital in providing the foundations for children to develop healthily and happily. Children being born into deprivation and living amongst deprivation in their early years are more likely to experience a wide range of health problems, fall behind their peers and face employment problems in adult life. The quality of early experiences is important as children develop, providing opportunity for motor (physical), intellectual (language and communication), cognitive and socio-emotional development.

Education

At KS4, each pupil is given an Attainment 8 score (a score out of 90) based on their 8 best GCSE grades including English, maths and at least 3 other traditional academic GCSEs (sciences, languages, and humanities). Other qualifications at an equivalent level (e.g., BTECs) can also count towards the score. In 2022, average GCSE attainment scores per pupil (out of 90) was in Askern (57.1) and Campsall (32.8).

Askern attainment scores are the highest in North of Doncaster, whilst Campsall have the lowest in North of Doncaster and second lowest in Doncaster. In 2023, 67% of

Askern pupils, 43% of Campsall pupils and 73% of Norton pupils achieved the expected standard in reading, writing, and mathematics at key stage 2. Campsall has the 7th lowest rate in Doncaster and highest rate in North of Doncaster, whilst Norton has the highest in the North of Doncaster. Carcroft data was unavailable due to an administrative error on KS2 assessments.

10% of pupils in Norton and Askern have Special Educational Needs, slightly higher than Doncaster (10%), however only 30% of these receive extra help in school. More understanding around why so little are receiving help in schools and what help is offered should be at the forefront of bettering education for children with educational needs.

Obesity levels

Children classified as overweight (including obese) in reception are more prevalent in Askern and Norton ward (26.3%) compared to the average of Doncaster (22.6%). This trend continues into year 6, where a significantly higher proportion of children are reported to be overweight, obese or severely obese (35.2%). The longevity and early onset of such health risks suggests public health interventions need to target families and children at a much earlier age to educate them on healthy lifestyle choices and the impact of poor choices on their health.

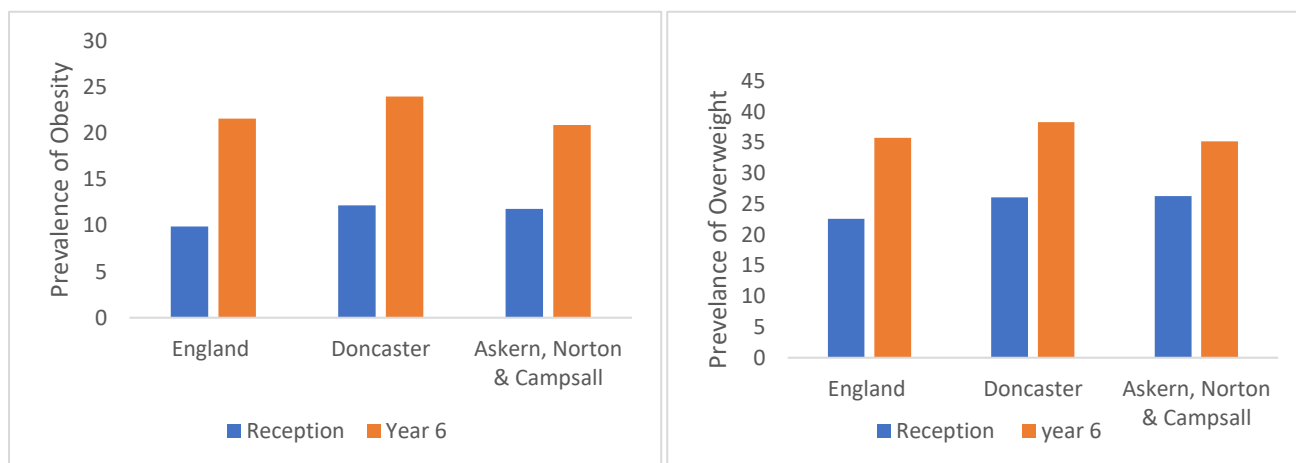


Figure 14. Prevalence of obesity and overweight children in Reception and Year 6 (National Child Measurement Programme, 2020)

Fruit and Vegetable Intake

Data over the last 12 months does suggest school aged children do consume some form of healthy foods during the week. That is, 65% children reported to have eaten fruit and/or vegetables most or every day of the week in 2021. There is also a smaller proportion of pupils reported to consume takeaways most or every day of the week (9%) compared to Doncaster's 13% average. More specifically, public health interventions may need to focus on educating school aged children and parents on food choices and eating balanced meals, incorporating fruit and vegetables.

Hospital Admissions

NHS (2021) shows the rate of A&E admissions and emergency admissions in under 5s are both significantly lower in Askern and Norton ward (94.7 per 1000) than England (140.7 per 1000). However, the rate of emergency hospital admissions for ages 15 to

24 are significantly higher in Askern and Norton ward (164.8 per 1000) than figures reported for England (127.9 per 1000) and slightly higher for Doncaster (161.6 per 1000).

The 2021-22 Pupil Lifestyle Survey which included primary and secondary schools across Doncaster reported that children in Norton and Askern have one of the highest rates of exposure to smoking in Doncaster, both in the home and in vehicles. That is, 38% of the children surveyed encountered smoking in the home, whilst 13% reported experiences of smoking indoors and as a passenger in a car. Evidence suggests growing up in a home where smoking occurs is one of the biggest risk factors to children becoming smokers themselves and may explain the high rates of smoking and smoking related health conditions in adult years. It is important to note that the Pupil Lifestyle Survey is self-reported and was not completed by all the schools.

Health Inequalities

Long term Health Conditions

The proportion of residents with poor health in Norton and Askern is considerably greater than the national average. ONS (2021) reported 23% of residents as having a limiting health condition or disability compared to an average of 17.6% across England. In addition to this, residents have self-reported that their health is poorer than across Doncaster and England. That is, 20.5% of Norton residents, 24.3% of Askern residents and 21.8% of Campsall residents reported their health as fair, bad or poor whilst a total of 65.4% of residents are registered disabled under the Equality Act across Norton, Askern and Campsall.

Hospital admissions for those living with limiting illnesses or health conditions largely associated with poor lifestyle choices are significantly higher across Askern and Norton ward. Figure 14 shows the number of emergency admissions to hospital per 100 people for Chronic Obstructive Pulmonary Disease (COPD), Myocardial Infarction, Strokes and Chronic Heart Disease (CHD).

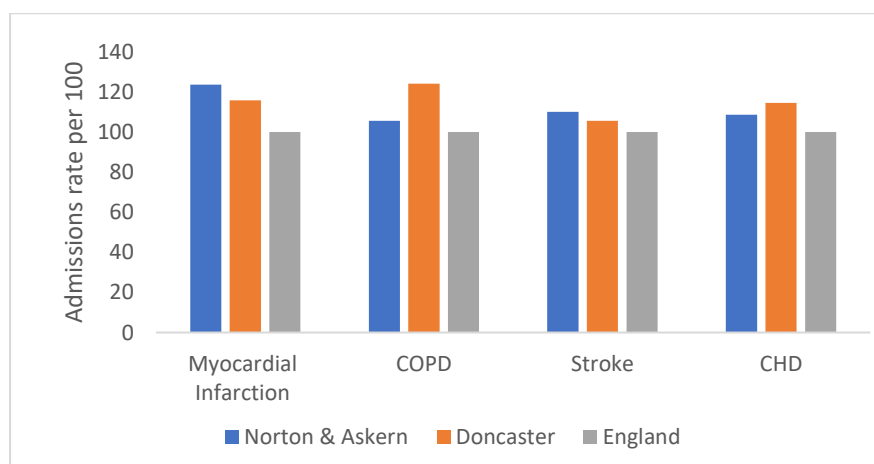


Figure 15. Comparison of hospital admissions across (ONS, 2021)

Alcohol

Admissions associated with alcohol incidences and myocardial infarctions (heart attacks) in Norton and Askern are a cause for concern, with higher rates than Doncaster and England. Alcohol misuse and self-management of long-term poor lifestyle choices should be considered during preventative work to reduce the risk of such incidences.

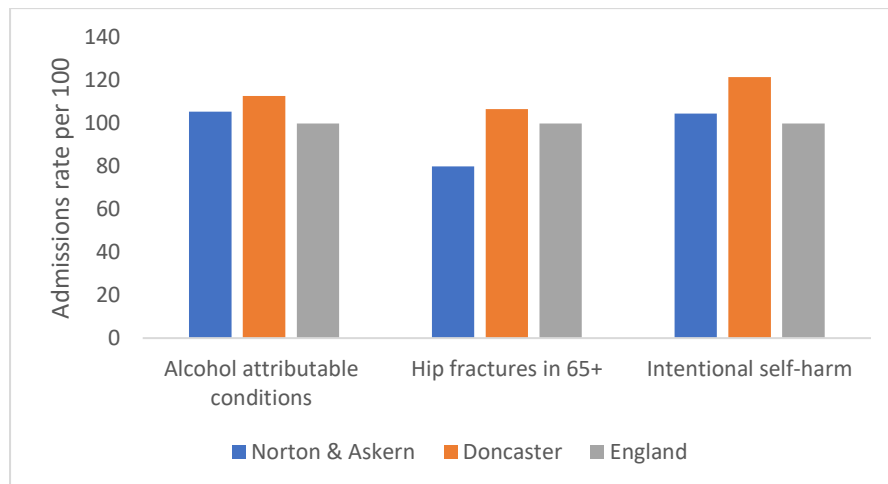


Figure 16. Comparison of hospital admissions (ONS, 2021)

More specifically, Figure 16 shows data taken at LSAO level and highlights discrepancies across communities when relating to alcohol incidences. There is considerably more issues related to alcohol in Campsall (137 per 100) than Norton and Askern. Campsall has the second highest rate of alcohol related incidences in North Doncaster.

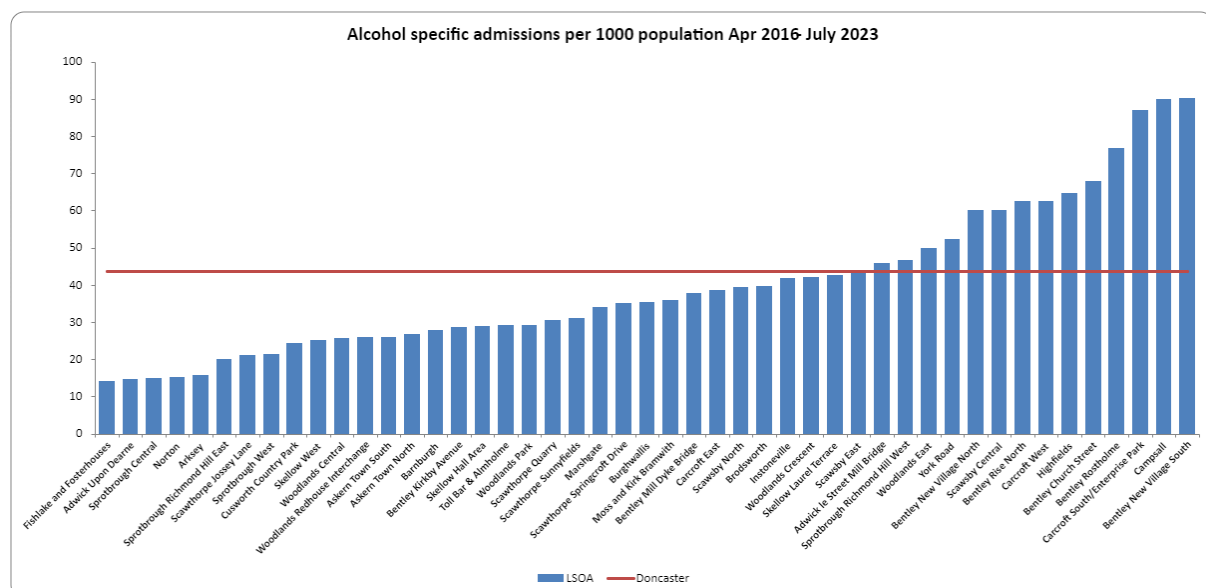


Figure 17. Alcohol Specific Admissions per 1000 population Apr 2016-July 2023 (ONS, 2021)

Smoking

Table 2. Smoking Prevalence in Primary Care Network practices across Doncaster (NHS England, 2023)

Practice	Sum of age 15+	Sum of Smokers	Sum of Prevalence
The Flying Scotsman Health Centre	9671	3053	31.57%
Frances Street Medical Centre	5931	1532	25.83%
The New Surgery	6143	1447	23.56%
The Nayar Practice	4229	979	23.15%
The Ransome Practice	6749	1519	22.51%
Edlington Health Centre Practice	4010	877	21.87%
Thorne Moor Medical Practice	7867	1688	21.46%
Conisbrough Medical Practice	1377	287	20.84%
Askern Medical Practice	6441	1333	20.70%
Field Road Surgery	7840	1615	20.60%
Kingthorne Group Practice	11261	2272	20.18%
Northfield Surgery	8405	1681	20.00%
Mexborough Health Centre	4130	821	19.88%
Great North Medical Group	13539	2682	19.81%
Regent Square Group Practice	8533	1675	19.63%
Conisbrough Group Practice	9756	1906	19.54%
Don Valley Healthcare	11148	2157	19.35%
St. Johns Group Practice	7301	1373	18.81%
The Scott Practice	12879	2327	18.07%
The Rossington Practice	6766	1207	17.84%
The Lakeside Practice	7261	1280	17.63%
Denaby Medical Practice	2921	509	17.43%
West End Clinic	3706	643	17.35%
White House Farm Medical Centre	5181	867	16.73%
Asa Medical Group	16707	2794	16.72%
Petersgate Medical Centre	7633	1225	16.05%
St Vincent Medical Centre	12203	1817	14.89%
The Oakwood Surgery	4797	677	14.11%
Mount Group Practice	11271	1567	13.90%
Scawsby Health Centre Practice	4850	655	13.51%
The Burns Practice	13152	1717	13.06%
Hatfield Health Centre	7785	952	12.23%
Park View Surgery	2126	238	11.19%
Dunsville Medical Centre	5268	542	10.29%

The Tickhill & Colliery Medical Practice	7447	700	9.40%
The Mayflower Medical Practice	6353	544	8.56%
Barnburgh Surgery	2044	174	8.51%
Doncaster	274681	49332	17.96%

According to NHS England (2023), there are 64045 registered patients with Doncaster North Primary Network (PCN) in North of Doncaster, 11,885 of those are registered as smokers. Askern Medical Practice data suggests smoking is more prevalent in Askern. There are 1333 residents registered as smokers, making up 20.7% of the registered patients. The Lakeside Practice is located in Askern and one of the closest GP practices for all Askern, Norton and Campsall residents. There are 1280 patients registered as smokers at this practice. This equates to 17.6% of patients, in line with rates of smoking across Doncaster.

Life expectancy

Norton and Askern have significantly lower life expectancy in males (77.9 years) compared to England (79.5 years). Life expectancy in females (82.3 years) is similar to England (83.2 years) and Doncaster (81.2 years) (ONS, 2021).

Causes of Death

Rates of deaths are significantly higher in Norton & Askern, particularly amongst those aged under 75 and considered preventable. Incidences of all cancers remains one of the leading health conditions residents are living with in Norton and Askern ward. Specifically, cancer is one of the leading causes of death in the ward. Norton and Askern possess the twelfth highest rate of deaths caused by cancers in Doncaster (127 per 100), compared to Doncaster (116 per 100) and England (100). Similarly, rates of deaths caused by respiratory conditions are increasingly high in Norton and Askern (142 per 100) compared to rates across Doncaster (125.3 per 100) and England (100).

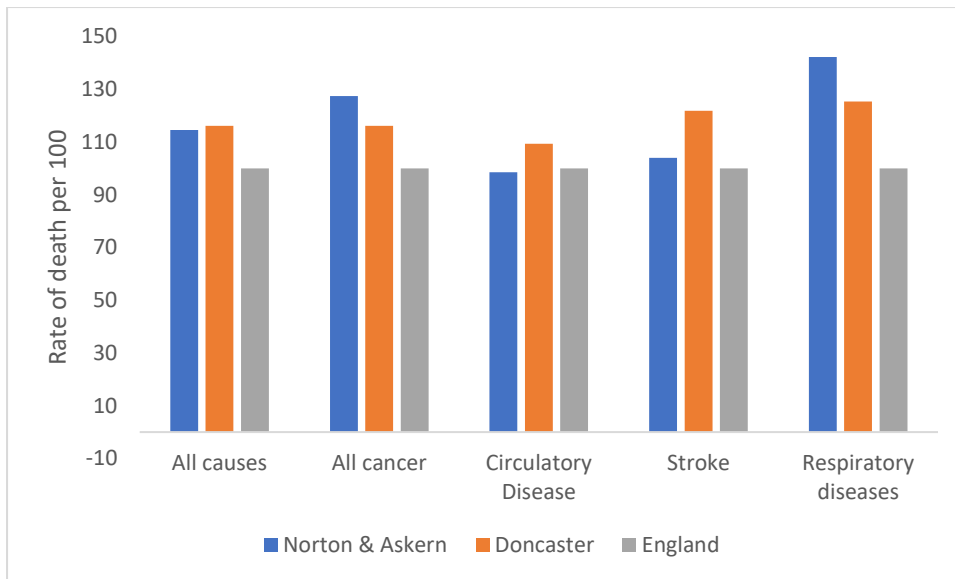


Figure 18. Comparison of deaths from all causes 2016-2020 (ONS, 2021)

Both cancers and respiratory conditions are highly preventable diseases through lifestyle choices. Both are respiratory diseases that are associated with long-term smoking and possible job history. This suggests there are significant challenges around self-management, health literacy and appropriate uses of health services.

Loneliness and isolation

A substantial number of residents are currently living alone in Norton (25.7%), Askern (31.3%) and Campsall (26.8%), although these do not appear significantly higher than the Doncaster average. Such data would suggest future projects should look at engaging with those at risk of isolation. There is a larger percentage of 2 people households in Norton (39.2%) and Campsall (41.3%). Askern consist of more households with 3 or more people (20%) in the ward. (ONS, 2021)

Physical Activity

Mosaic data shows that a percentage of Norton and Askern residents do engage in enough physical activity but there remains a large proportion who are inactive. Please see [appendix](#) for more information on mosaic data.

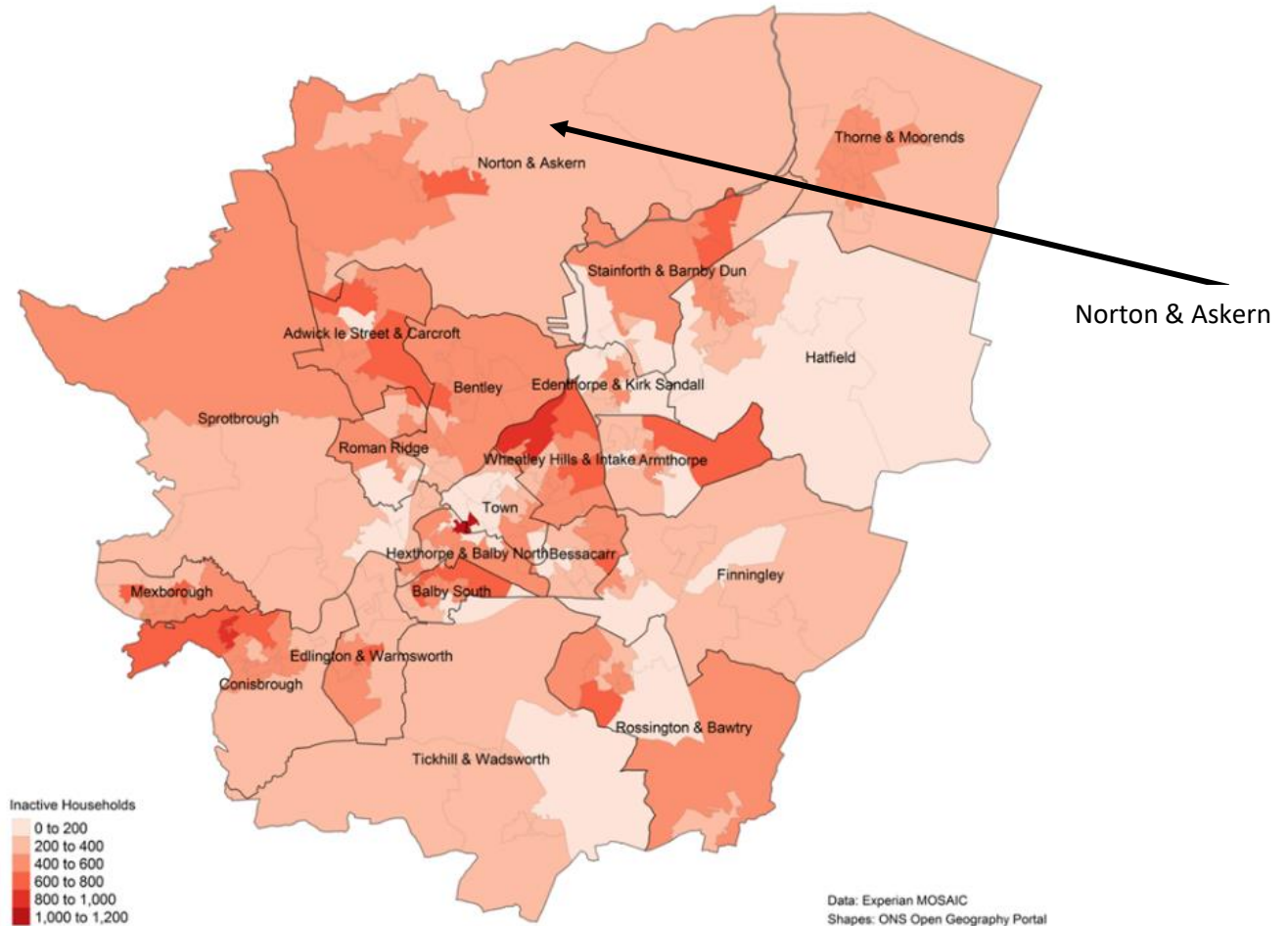


Figure 19. Inactive households in Norton and Askern

Despite a high proportion of residents not engaging in the recommended physical activity levels, Askern, Norton and Campsall does not fall within the top 10 inactive communities in Doncaster. It must be noted that inactivity levels still remain a cause for concern across Doncaster and this only reflect the heightened levels of inactivity across the city. Physical Activity should remain high on the agenda for this ward.

Data from the Pupil Lifestyle Survey (2022) reports an average of 31% of children being physically active on only one or two days a week, 21% were said to be active on three or four days a week, and 44% on five or more occasions during the week. Getting hot and tired, not being very good at physical activity and preferring to do other things were the top three residing answers given by pupils when asked why they did not participate in physical activity. The full Pupil Lifestyle Survey at ward level and

locality level can be found [here](#). Norton and Askern have one of the highest number of children walking to school (57%) and pupils participating in school clubs (22%).

Active Travel

A smaller proportion of individuals travel less than 10km to get to work in Norton (21.2%), Askern (34.6%) and Campsall (24.3%) when compared to Doncaster (41.7%) and England (35.4%). Due to their remote location, most residents who work away tend to travel up to 30km in Norton (36.15), Askern (30.8%) and Campsall (36.6%). Consequently, a high number of individuals travel by car or van to work from Norton (67.4%), Askern (63.7%) and Campsall (65.3%) than Doncaster (57.9%). Projects promoting active travel to and from work should be considered to improve physical activity levels in the community.

Green Spaces and Parks

Campsall is home to Doncaster future park Campsall Country. The aim of Doncaster future parks is to improve parks and open spaces within Doncaster. Through community consultations, a bespoke plan has been put in place to improve the country park. Improvements to the park will include enhanced walking routes, improvements to the entrances, signage, and interpretation boards on site, as well as better linking together the leisure centre and the park to increase access to both and create one 'active environment' for residents and other visitors to enjoy. The Friends of Campsall Country Park have collaborated with the Future Parks project and are leading on a number of activities and events for the community to enjoy.

Askern is home to Lakeside Park situated alongside Askern Lake and home to play areas, outdoor gym areas, playing fields, sports pitches, picnic areas and walking routes. Askern is also home to Warren House Park, offering a playground, skatepark and teen shelter, a basketball, and sports pitches. It is also surrounded by acres of woodlands areas.

Norton Paris Council playing fields is the main green space in Norton. There are three smaller areas with play equipment for children in Norton situated behind the School Boy Pub, West End Road and Ryecroft community rooms.



Community Information

Population

Population Size:

Norton: 3500

Campsall: 1900

Askern: 6100

Ethnicity and Language

Norton, Askern and Campsall does not appear to be very diverse in ethnicity or languages spoken. Over 97% of the population residing in each community identify as 'White', whilst over 96% report that their main language spoken is English. Only 9.3% of residents report to have been 'born outside the UK'.

Age Profile

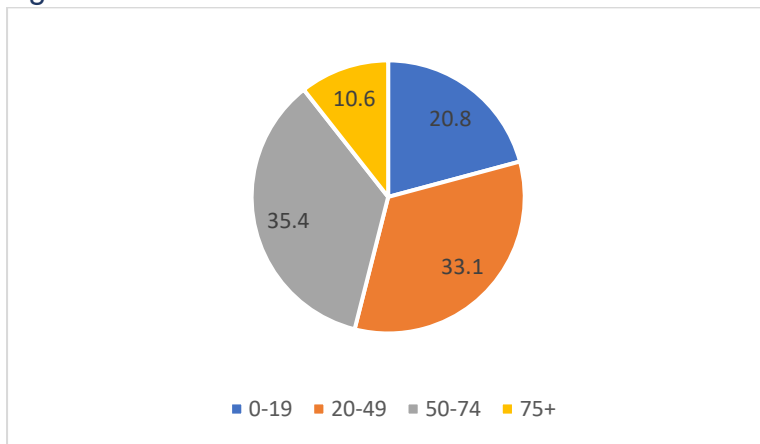


Figure 20. Age profile of Norton residents (ONS, 2021)

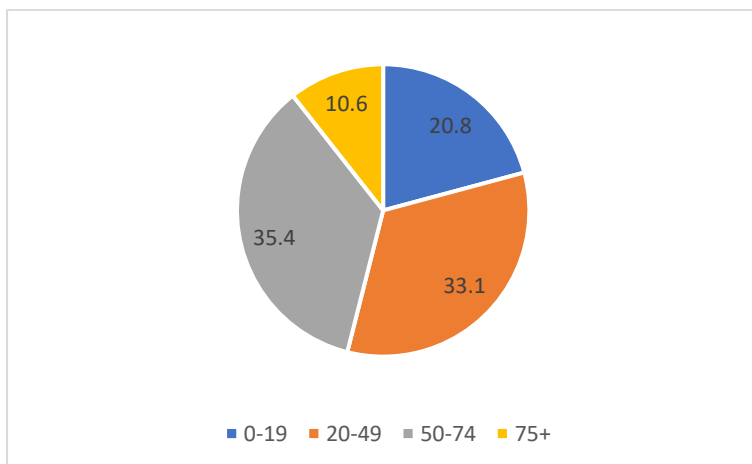


Figure 21. Age profile of Askern residents (ONS, 2021)

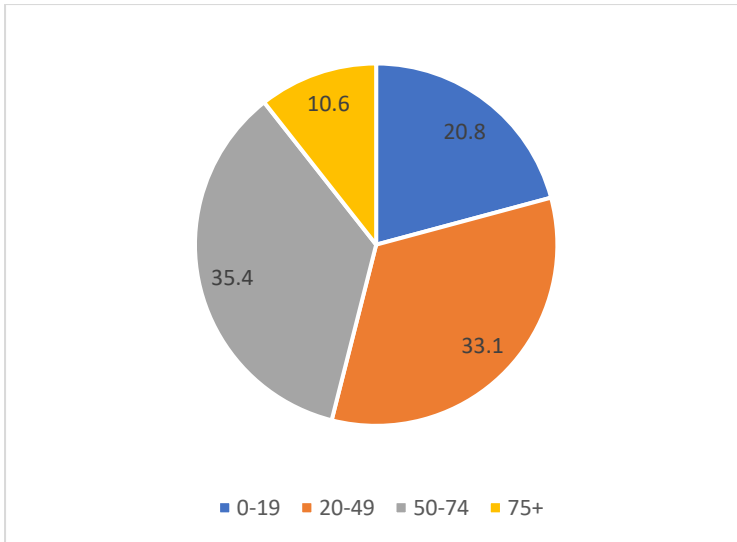


Figure 22. Age Profile of Campsall residents (ONS, 2021)

There are more school aged children in Askern than the UK average, whilst there are fewer older aged adults than England. Norton and Campsall’s populations is considerably older, with more older aged adults and fewer school children and work age adults residing in the community.

Housing

Housing conditions and the surrounding environment can have profound impacts upon residents’ health and exacerbate health inequalities.

Nearly all of housing in Norton are classified as houses and/ or bungalows (99%), whilst a large proportion make up the proportion of houses in Askern (93.15) and Campsall (91.6%). A small percentage of accommodation are flats, maisonettes, or apartments in Norton (1.0%), Askern (5.6%) or Campsall (8.4%).

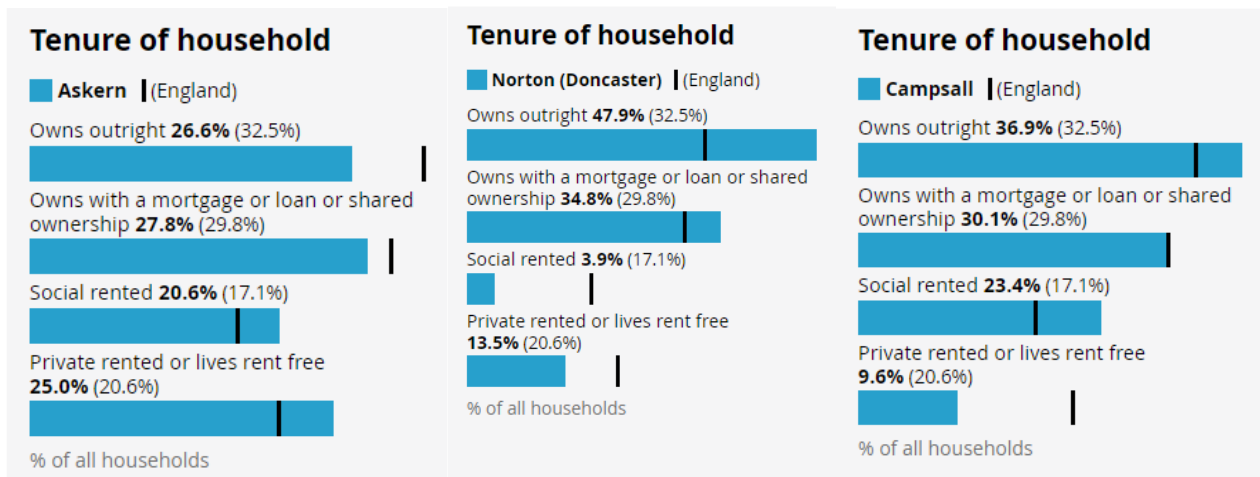


Figure 23. Tenure of households in Norton, Askern and Campsall (ONS, 2021)

Figure 23 shows the tenure of households in Norton, Askern and Campsall. A higher percentage of households are owned outright in Norton (47.9%) and Campsall (36.95) than the Doncaster average (32.5%). Similarly, households owned with a mortgage, loan or shared ownership is significantly higher in Norton (34.8%) and Campsall

(30.1%). The largest proportion of socially rented households are found in Campsall (23.4%). Whilst the largest proportion of private rented or living rent free households are found in Askern (25%).

Anti-Social Behaviour

North locality reported the lowest number of ASB, hate crime and low-level crimes during the first 6 months of 2023/24. Figure 22 shows that Norton and Askern had one of the lowest rates of crime and ASB across the North Locality.

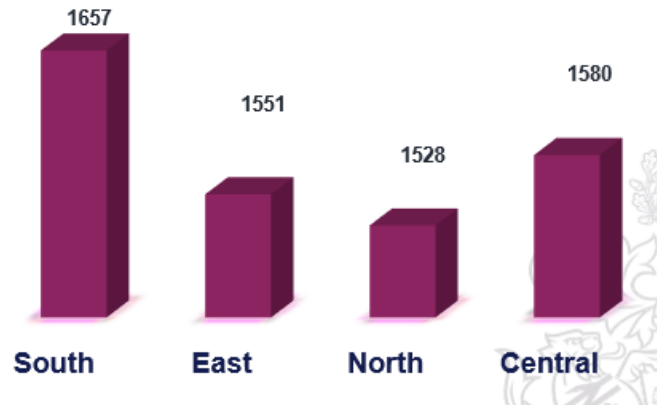


Figure 24. Number of early interventions, ASB, hate crime and low-level crime issues identified and managed at Locality level (Stronger Communities, Doncaster Council 2023/24)

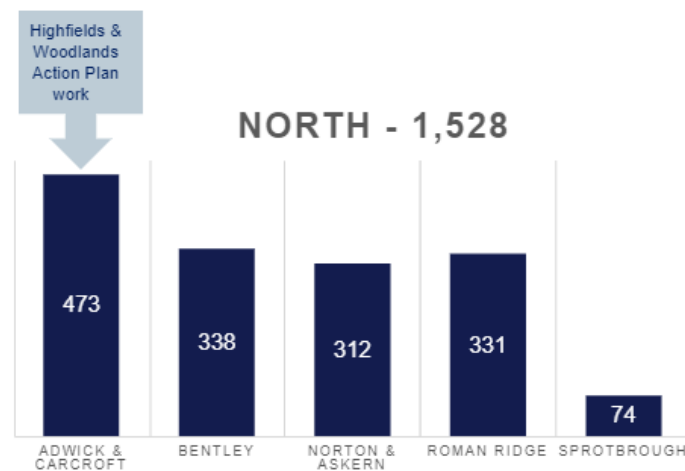


Figure 25. Number of early interventions, ASB, hate crime and low-level crime issues identified and managed at Ward level (Stronger Communities, Doncaster Council 2023/24)

Community Insight

Appreciative Inquiry

The Well Doncaster Team undertake an Appreciative Inquiry within communities to gather insight to support co-designing action plans with the community. The AI questions are structured to pull on the successes of the past and present, to seek new potentials and possibilities and build on those through the Dream and Design stages.

The Appreciative Inquiry will include the following steps:

1. **Discovery** – This will involve engagement with the residents of Askern, Norton and Campsall to find out what is working well in the community. Responses will be themed to allow priorities of the community to be established.
2. **Dream** – Residents and key stakeholders will be invited to attend an initial workshop to discuss what ideas they have for their community and how these will meet the priorities highlighted in the discovery phase.
3. **Design** – All attendees are invited back for a second workshop to develop an action plan to direct work for the community.
4. **Deliver** – A collaborative way of working and investing resources in working towards to the actions from the previous phase.

Please note that engagement is carried out in each community and conversations are had within Norton, Askern and Campsall but data is pulled together as a ward. This is due to the size of each community and community assets being utilised by residents across all three communities.

Askern and Norton			
Theme	Sub theme	Quotes	Commentary
People	Community cohesion	<p>“People really pull together” A162</p> <p>“A community working together” A162</p> <p>“The people in the café are amazing” A166</p>	<p>Residents in Askern believe there is a sense of community within where they live.</p> <p>Residents feel they have many positive relationships with others and can count on others when they are in need.</p>
Good Health & Wellbeing	<p>Active Travel</p> <p>Daily tasks</p>	<p>“Being able to come out and enjoy the scenery” A166</p> <p>“Increasing active travel” A169</p> <p>“Getting out of bed and keeping busy” A167</p>	<p>Askern residents feel they are able to complete daily tasks within their community. This shows the services and amenities they have available to them are effective and are well used.</p>

Community Assets	Green & Blue spaces Library Amenities	<p>“I like the lake” A165</p> <p>“i enjoy the fishing at lake” A164</p> <p>“Lake resource and beautiful” A168</p> <p>“I love the park” A163</p> <p>“Campsall country park is beautiful” A168</p> <p>“Library is good” A168</p> <p>“i use the shops and cafes” A165</p>	<p>Residents in Askern believe the amenities and assets they currently have are great and provide a great service to the great community. The lake is a highlight for a lot of residents for its aesthetics and also its activities.</p> <p>Parks and green spaces are widely available to residents and are well utilised. They provide safe spaces for residents to be active.</p> <p>Local amenities are available to residents also and provide them with daily support. The high street in Askern has a high foot fall and is well utilised by residents.</p>
Activities	Fishing Groups	<p>“Fishing helps with my anxiety” A164</p> <p>“I enjoy getting out and fishing.” A163</p> <p>“Lot for young people to do especially recently. Family hub has a lot to offer including Active play groups.” A168</p> <p>“The number of groups and activities is fantastic” A168</p>	<p>Fishing is a key activity in Askern and is undertaken by a number of residents. Due to facilities such as Askern Lake and Askern clay pond, residents are able to undertake fishing. Residents feel that fishing helps with their overall health and wellbeing.</p> <p>There is a significant number of community groups in Askern which are open to all residents. These groups provide a safe social space for residents to meet and socialise.</p>

Doncaster Talks

In 2019, Doncaster Talks undertook insight across the borough. Responses were separated into wards and thematically analysed. Across Norton and Askern, 195 responses were recorded and the main themes on what people liked about the area, what could be improved, and what the borough should focus on are displayed in the table below:



Like

- Friendly community with good neighbours/people
- Great countryside/open spaces on doorstep and access to lovely walks
- Lovely lake/good focal/meet point

Improve

- Improve transport links including bus services, frequency and infrastructure
- More activities for kids, leisure facilities, parks, holiday areas
- Clean the streets/lake areas and more enforcement for dropping litter

Focus

- Improve condition of the roads
- Street cleanliness including littering and flowerbeds
- Improve range of activities for young people and improve their wellbeing



Locality Plans

Locality plans have been developed by Team Doncaster to look at how we can work together to strengthen communities and improve the lives and opportunities for the residents living there. This plan has been put together with more input and engagement from those living and working in the North locality. Communities have told shared exactly what they want to see change and improve in the areas where they live, and this insight has enabled a workable plan to deliver in conjunction with our communities and partners.



For more information on the North Locality plans, please visit [North Locality Plan 2023 - Draft Version.pdf \(windows.net\)](#)

Community Investment

Table 3. Community Investment across North Locality (Doncaster Council, 2023)

Ward	Total Amount by Ward	Funding Type	Total Amount by Locality
Norton & Askern	£104,900.00	VCFS, Ward Members, Barrier Buster, Community Booster, Active Communities Grant, Community Wealth Builder Support (X4), Locality Commissioning, Holiday Activity Fund, LSCIF Round Two, Community Investment Fund, Community Wealth Builder Grants, Dragon's Den, Ward Members	£804,160.00
Adwick Le Street & Carcroft	£93,710.00		
Sprotbrough & Cusworth	£104,840.00		
Roman Ridge	£45,810.00		
Bentley	£454,900.00		

In the North locality, the sum of investment in community organisations was £804,160.00 as of November 2023 (Power BI, 2023). The main source of grants has been 'Community Wealth Builder Support', followed by 'VCFS Fund and 'Active Communities Grant'. The top priority for investment in the North was to 'enable positive lifestyle choices including weight management, smoking cessation, physical activity, drug and alcohol misuse', followed by 'children and young people provision', 'support physical activity', and 'community spirit'.

In the Norton and Askern ward, investment totalled £104,900 as of November 2023. A total of 13 community organisations have received funding including Askern CRY foodbank, Breaking Beats Ltd and The Young Folk Foundation. The top priority for investment in the Norton and Askern ward was 'children and young people provision'.



Appendix

Well Doncaster Annual reports

Well Doncaster Approach: <https://youtu.be/e1RKOZoGI10>

More information about how Well Doncaster has been meeting outcomes and objectives can be found in past and present annual report:

<https://welldoncaster.wordpress.com>

Census data 2021

The census is undertaken by the Office for National Statistics every 10 years and gives us a picture of all the people and households in England and Wales.

[Build a custom area profile - Census 2021, ONS](#)

[Census Maps - Census 2021 data interactive, ONS](#)

Public health Data

Public Health Data

Fingertips

This is a new fingertips profile that uses data from Local Health an existing PHE data tool. Local Health is a collection of quality assured health information presented for small geographical areas. By presenting data for small areas, Local Health provides evidence of inequalities within local areas. It supports targeted interventions to reduce such inequalities.

Local Health contains indicators related to:

- Population and demographic factors
- Wider determinants of health
- Health outcomes

It presents data for middle super output areas (MSOA), electoral wards, clinical commissioning groups (CCG), local authorities, and England as a whole.

Please note, as the Local Health tool was designed to allow users to map small area data, a mapping option has not been provided in this profile.

<https://fingertips.phe.org.uk/profile/local-health/data#page/0>

[Local Health - Public Health England - Reports: get a dashboard on a custom area](#)

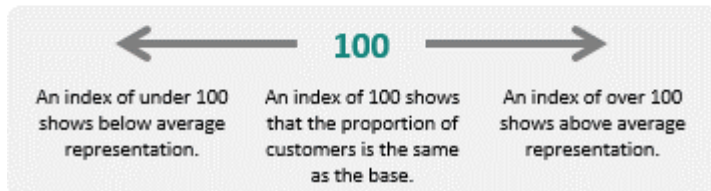
Acorn profiles

Wellbeing Acorn segments the population into 4 groups (Health Challenges; At Risk; Caution; Healthy) and 25 types describing the health and wellbeing attributes of each postcode across the country. By analysing significant social and health related behaviour, it provides precise information and an in depth understanding of upstream issues affected by current lifestyle traits

INTERPRETING THE REPORT

The Wellbeing Acorn profile report helps you understand the underlying demographics, lifestyle and health attributes of your customers and service users by comparing their Wellbeing Acorn profile to a base (e.g. UK population, area or other customer groups).

INDEX



The Wellbeing Acorn Profile contains 12 variables that are indicators of Disability or Infirmary in the population and 9 variables related to unhealthy Behaviours. The average score measured against the base profile of Yorkshire and the Humber is 100. A value above 100 indicates that the area population is overrepresented for this characteristic, below 100 the value is less than the average or underrepresented.

Get Doncaster Moving survey

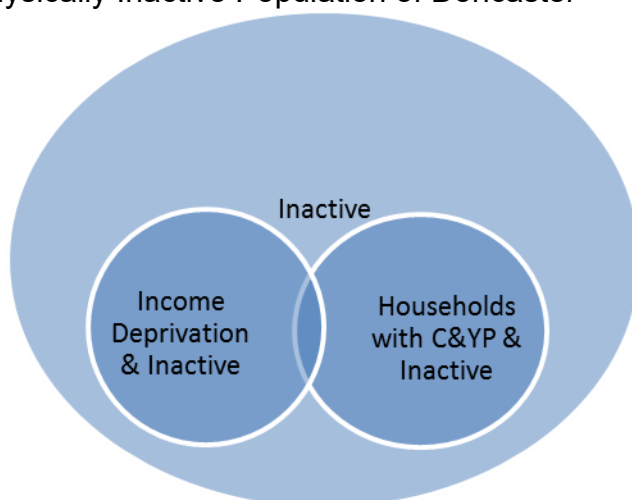
<https://getdoncastermoving.org/uploads/behavioural-insight-phase-one-summary-report.pdf?v=1644581925>

Mosaic data

Mosaic Public Sector classifies the UK population into one of 66 types and 15 groups through a detailed and accurate understanding of each citizen's demographics, lifestyles, behaviours and location.

The Physically Inactive Population of Doncaster

The Physically Inactive Population of Doncaster



The MOSAIC types who “Do not exercise” and “Do not take part in Sport” were searched and three priority groups have been identified through work with strategic

partners as part of the development of Doncaster's Physical Activity Strategy. The three priority groups are:

- The Inactive
- Families with children and young people
- People living in income deprivation

These groups are cross-referenced against the inactivity list allowing for the identification of MOSAIC types which are both likely to be inactive and living in deprivation as well as inactive and from households with children and young people.

Link to the Get Doncaster Moving strategy; [Let's Get Moving! | Get Doncaster Moving](#)

Pupil Lifestyle Survey 2022

[Pupil Lifestyle Survey - Healthy Schools \(healthylearningdoncaster.co.uk\)](https://healthylearningdoncaster.co.uk)

Power BI – Joint Strategic Needs Assessment

The Joint Strategic Needs Assessment (JSNA) is a process that identifies the current and future health and wellbeing needs of a local population. The dashboards show information about the employment, health, and wellbeing of people in Doncaster. We use this information to inform our policies and strategies to improve the lives of everyone in the Doncaster area.

[Joint Strategic Needs Assessments - Team Doncaster](#)

