

# Greater Bentley Community Profile

(Including Bentley, Toll Bar, Arksey, Almholme & York Rd)



**Well Doncaster**

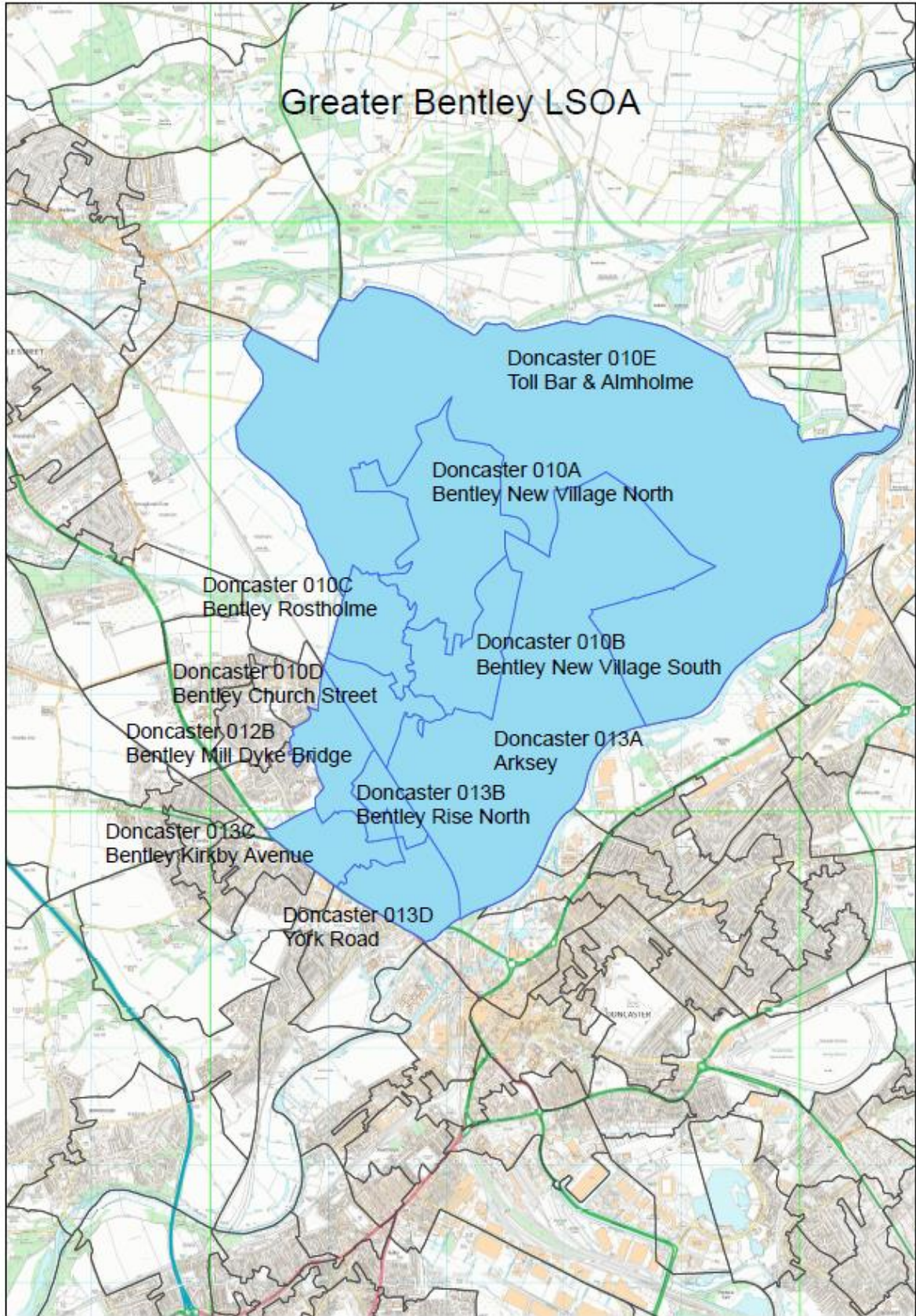
**Community Led Health and Wealth**  
Empowering people in Doncaster to live better, healthier, and happier lives.

[www.welldoncaster.uk](http://www.welldoncaster.uk)

Well Doncaster  
**Community  
Wealth Builder**

Well Doncaster  
**Be Well**

 **City of  
Doncaster  
Council**



## This Report

This report focuses on Bentley ward in the North of Doncaster and consists of four smaller communities as LSOA level: Tollbar and Almholme, Arksey, Bentley and York Road. The report begins with a one-page summary outlining key information and priorities about Bentley ward. The document builds on the initial community profile of 2021 and updated figures have been included where possible. This report shows the initial conversations with communities, including ward members, community organisations, faith groups, residents and other organisations who work in the area. Communities' knowledge of their own areas enables them to identify their strengths and the assets on which they can build on. This document is shared with the intention of supporting those conversations and sharing information that might not be readily available to local people.



# Bentley



Low GCSE attainment scores



26.4% of children living in **poverty**



23.3% of Bentley residents reported to have fair, bad or very bad health



36.2% of the residents of Bentley live alone



Over 95% of the population identify as 'White' and report that their main language spoken is English



26% of year 6 children are classified as obese

# Toll Bar



One of the Lowest GCSE attainment scores in Doncaster at 37.7 out of 90



26.4% of children living in **poverty**



24.3% of Toll Bar residents reported to have fair, bad or very bad health



28% of the residents of Toll Bar live alone



3.1% of the community identify as Asian, Asian British or Asian Welsh



26% of year 6 children are classified as obese

# Arksey



Highest GCSE attainment score in Bentley ward (57.1 out of 90)



26.4% of children living in **poverty**



22.7% of Arksey residents reported to have fair, bad or very bad health



29.8% of the residents of Arksey live alone



Over 95% of the population identify as 'White' and report that their main language spoken is English



26% of year 6 children are classified as obese

# Almholme & York Road



51.1 out of 90  
GCSE attainment  
score



26.4% of children  
living in **poverty**



19.8% York Road  
residents reported  
to have fair, bad or  
very bad health



42.8% of the  
residents of  
York Road live  
alone



Over 95% of the  
population  
identify as 'White'  
and report that  
their main  
language spoken is  
English



26% of year 6  
children are  
classified as  
obese

## Contents

This Report.....	3
One page Summary .....	10
Key Health Priorities .....	10
Assets .....	11
Asset Maps .....	11
Community Assets.....	11
Business Assets .....	14
Health Assets.....	17
Assets in the Community .....	20
Population Health Management.....	20
Ward Members .....	26
Health and Wealth.....	27
Deprivation.....	27
Wealth Inequalities.....	28
Fuel Poverty.....	28
Older people living in poverty (IDAOP) .....	30
Food Poverty .....	30
Employment.....	30
Citizens Advice Doncaster Borough.....	31
Childhood Development.....	32
Smoking Exposure.....	32
Education.....	32
Health Inequalities .....	32
Long-Term Health Conditions .....	32
Alcohol Intake .....	33
Smoking.....	33
Life expectancy.....	35
Physical Activity .....	36
Green Spaces and Parks .....	37
Community Information .....	37
Population .....	37
Population Size.....	37
Ethnicity and Language .....	37



Age Profile .....	38
Housing.....	39
Anti-Social Behaviour .....	40
Community Insight.....	42
Appreciative Inquiry .....	42
Doncaster Talks .....	54
Locality Plan.....	55
Appendix .....	57
Well Doncaster Annual reports .....	57
Census data 2021 .....	57
Public Health Data .....	57
Acorn profiles .....	57
Get Doncaster Moving survey.....	58
Mosaic data.....	58
Pupil Lifestyle Survey 2022.....	59
Power BI – Joint Strategic Needs Assessment.....	59

## One page Summary

Bentley is a suburb located in the North of Doncaster. Bentley consists of four smaller identifiable communities as Lower Super Output Areas (LSOA); Bentley, Toll Bar, Arksey, Almholme & York Rd.

People in Bentley have a lower life expectancy and spend more of their lives in poor health than the average person. There is a high prevalence of respiratory conditions, including chronic obstructive pulmonary disease (COPD) and lung cancer. Many residents are living with conditions related to poor lifestyle choices, including smoking (one in four residents smokes) and high levels of physical inactivity.

Mortality rates for respiratory diseases, lung cancer and coronary heart disease are higher than the national and borough averages. There are also significantly higher rates of emergency admissions associated with these conditions, which suggest residents face challenges in self-managing their conditions and rely on emergency care.

The Bentley ward is rich in physical assets such as green spaces, community buildings and a thriving third sector. Within the ward there are two main communities: Bentley and Toll Bar.

Poverty and deprivation are significant challenges in Bentley as well as the higher proportion of unemployed residents. More children are reported to be living in poverty in Bentley in comparison to the average of Doncaster. This could be a contributing factor to the lower school attainment and child development rates in the ward.

Bentley has a higher-than-average proportion of residents from the Gypsy Roma Traveller community. The Doncaster borough has seen an increase in diversity across the borough, with the proportion of white British residents decreasing in 2014; however, Bentley continues to be predominantly white British. The age composition of the population of Bentley and Toll Bar is similar to the average of Doncaster.

The area has a high density of housing, particularly of traditional terrace houses. There is a higher-than-average proportion of socially rented accommodation, and a lower proportion of owner-occupied housing in the area. Bentley has a high percentage of people over 65 years-old living alone compared to the average Doncaster and England. Whilst this does not necessarily mean they are experiencing loneliness, there is an increased risk of isolation.

### Key Health Priorities

- Poverty (including child poverty, income deprivation, unemployment, and long-term unemployment)
- Higher mortality rates due to respiratory conditions which can be linked to poor lifestyle behaviours (smoking, alcohol consumption, inadequate dietary intake and physical inactivity)
- Childhood development (including starting well, weight management, physical activity, and school attainment)

## Assets

Well Doncaster uses a community-centred approach which allows investment in supporting, working with and empowering communities to facilitate healthier communities. The voice and role of our communities and taking a strengths/assets-based approach to work with individuals, families and communities is crucial to the achievement our overall vision.

### Asset Maps

The maps below show different types of assets across Bentley ward. These have been developed using ward boundaries. Bentley has large areas of rural land; therefore, assets tend to cluster in the urbanised areas Bentley and York Road, with limited resources in the Toll Bar, Arksey and Almholme areas. It should be noted that these maps are a starting point in understanding the community and that further work is needed amongst the community to understand all the assets and how they are used.

### Community Assets

Bentley community and the tail end of Toll Bar and Almholme is rich in green space and when speaking to residents is one of the greatest assets they identify in their community.

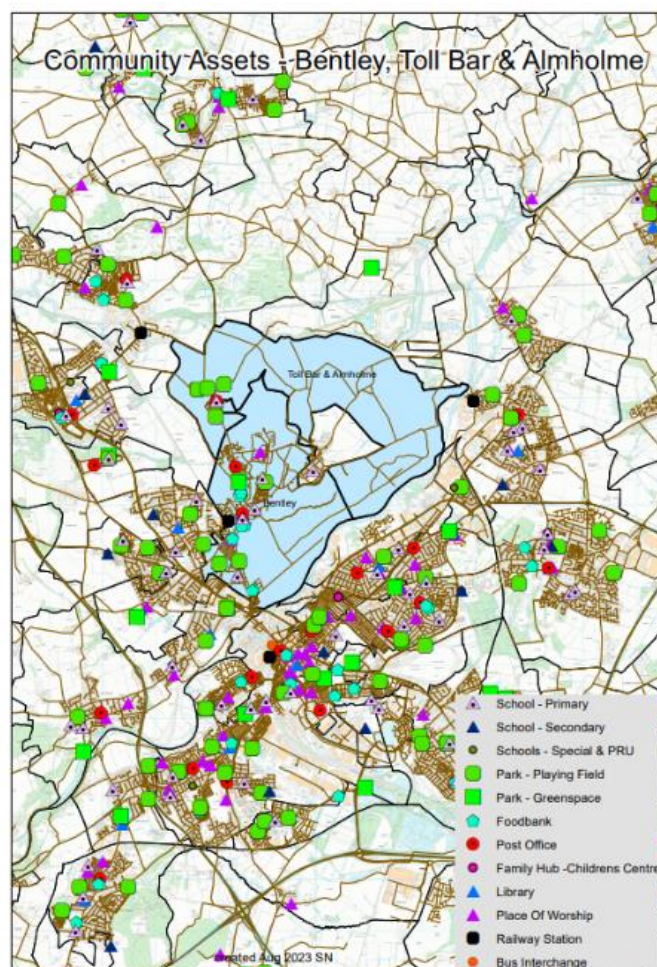


Figure 1. Community Assets in Bentley, Toll Bar and Almholme

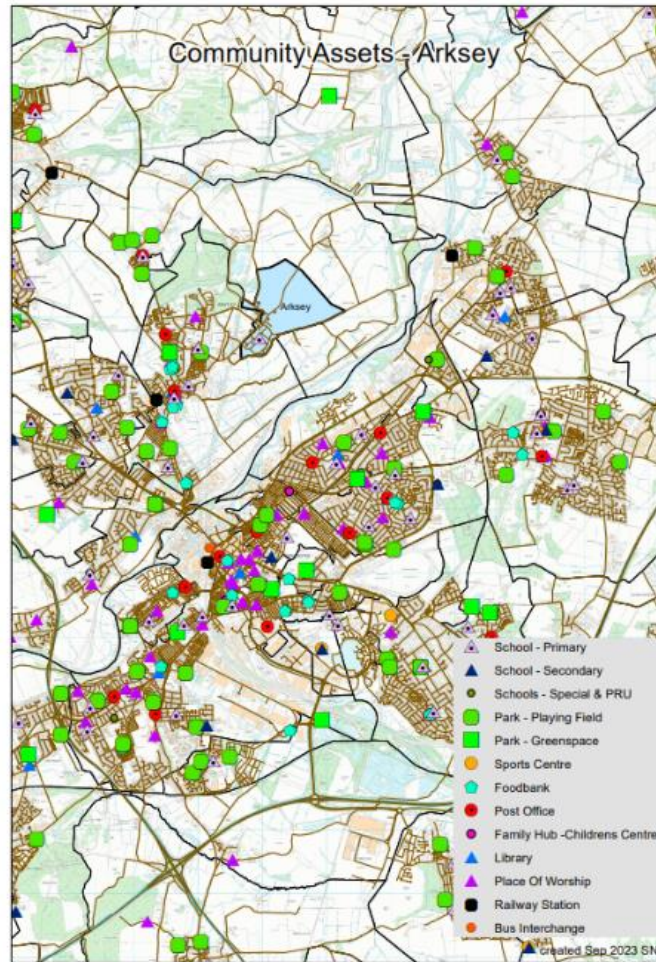


Figure 2. Arksey community assets

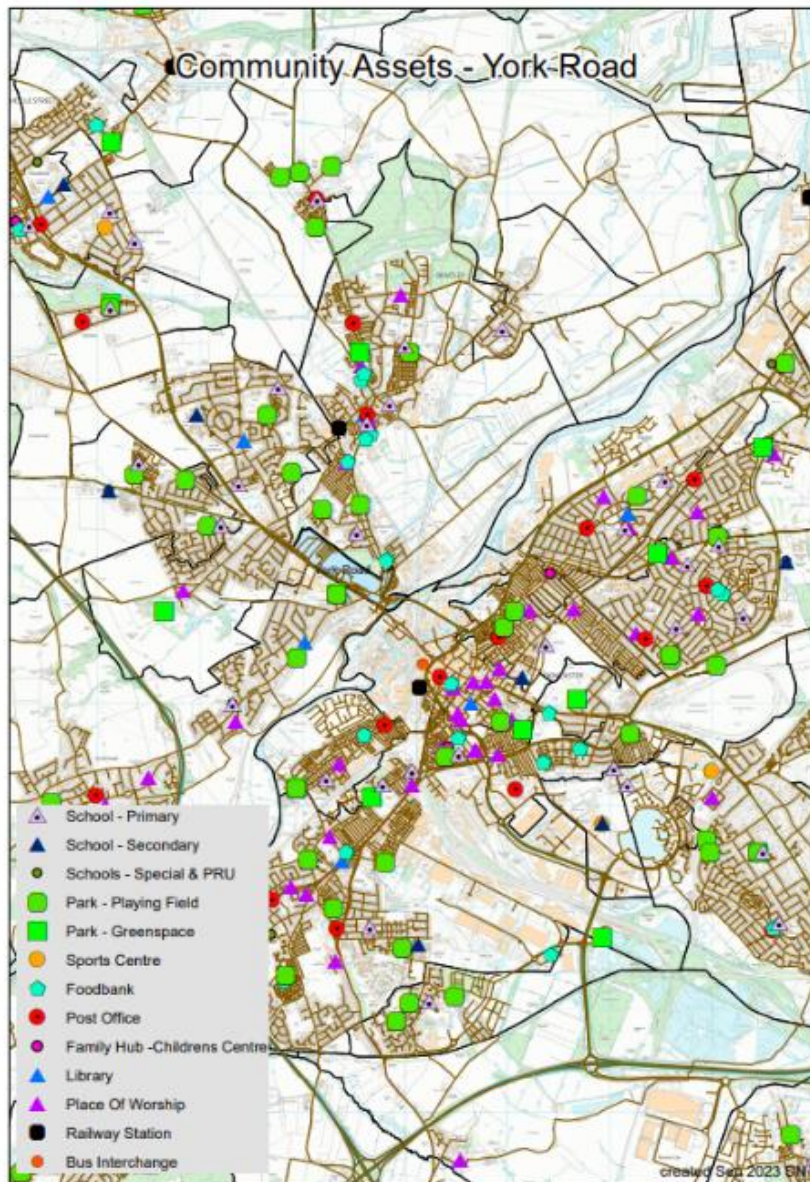


Figure 3. Community Assets in York Road

## Business Assets

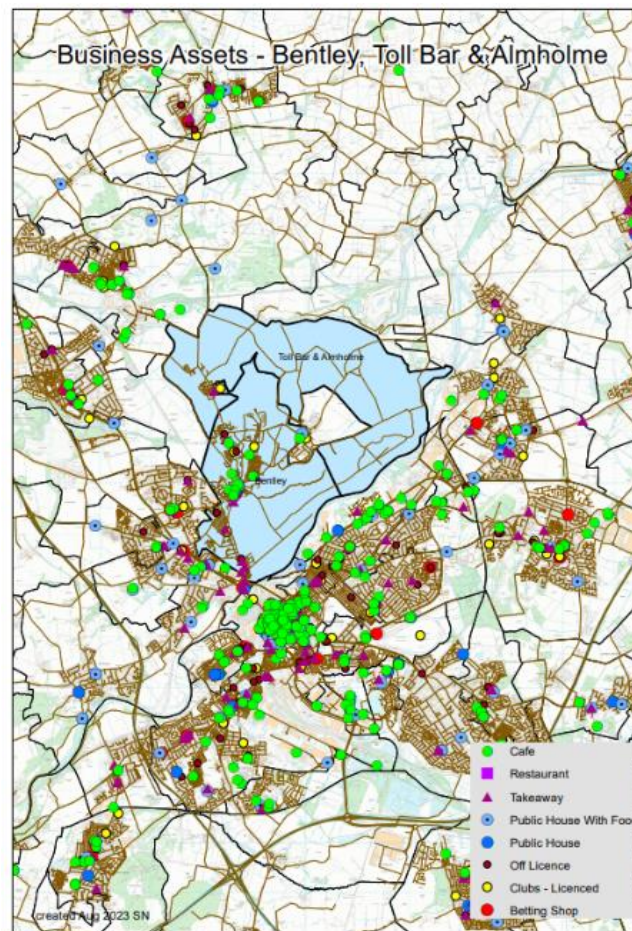


Figure 4. Business assets in Bentley, Toll Bar and Almholme

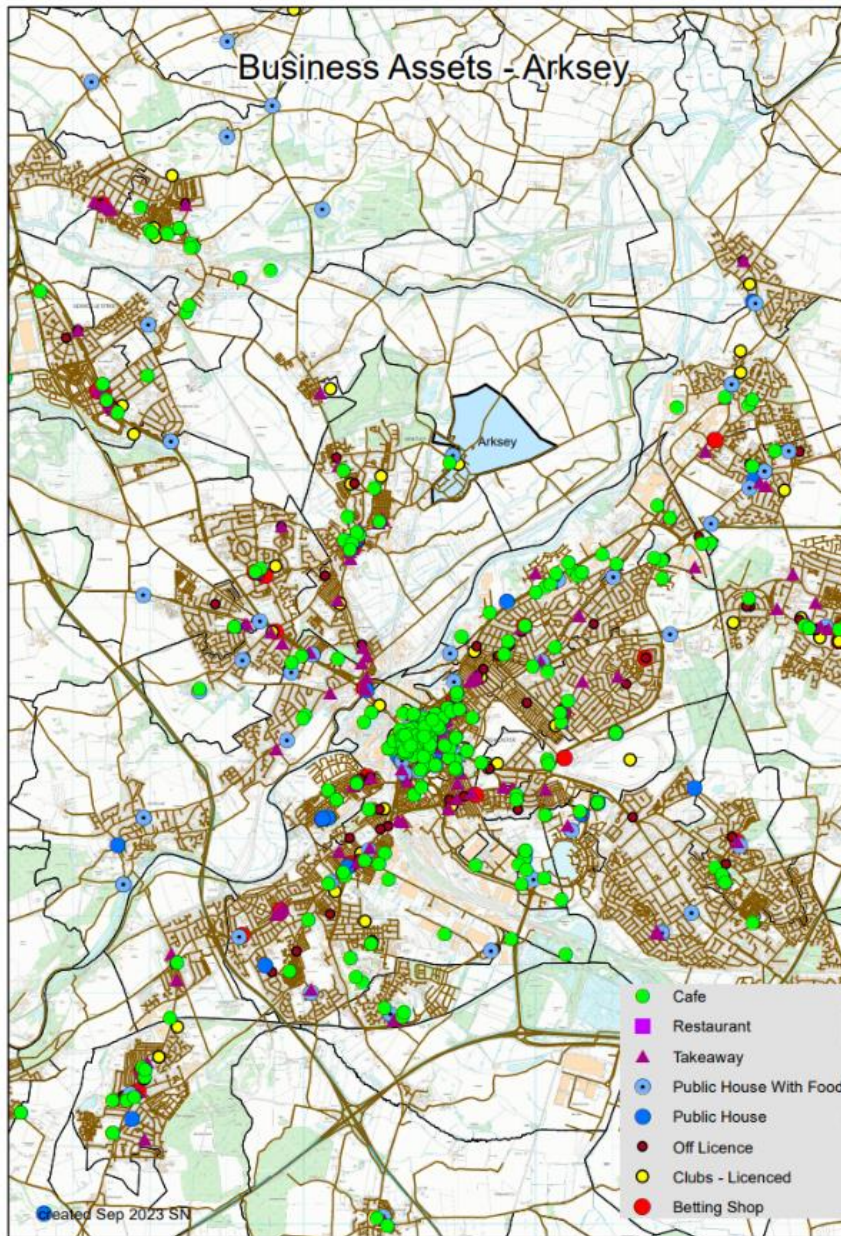


Figure 5. Business Assets in Arksey

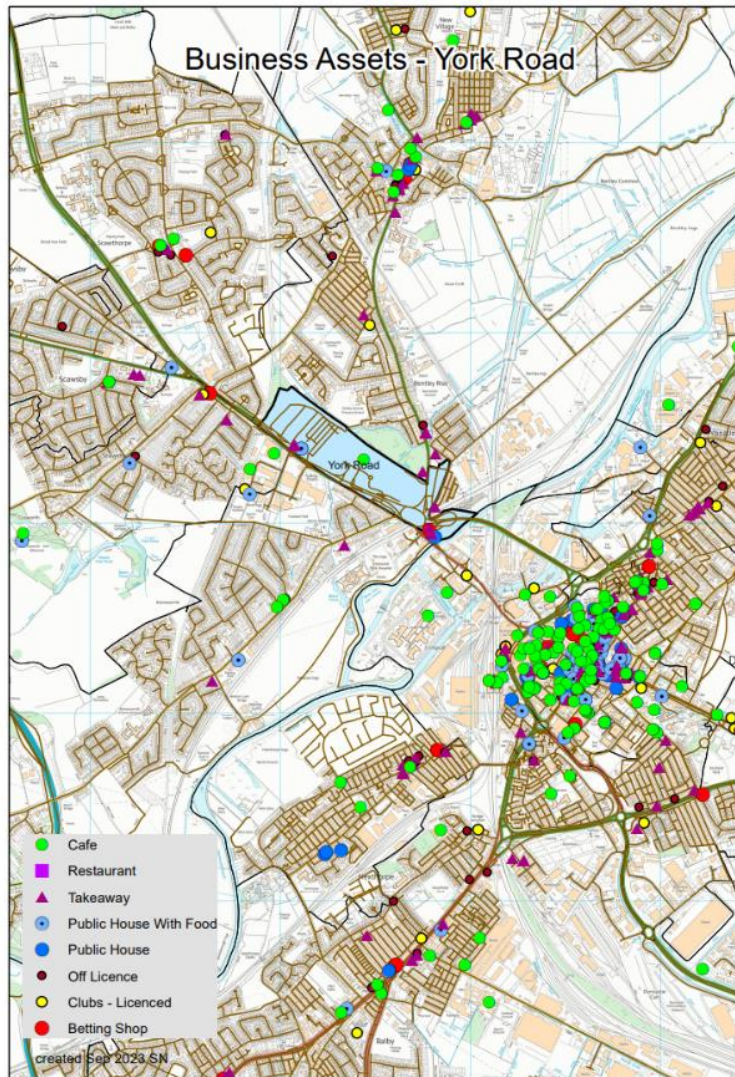


Figure 6. Business Assets on York Road



## Health Assets

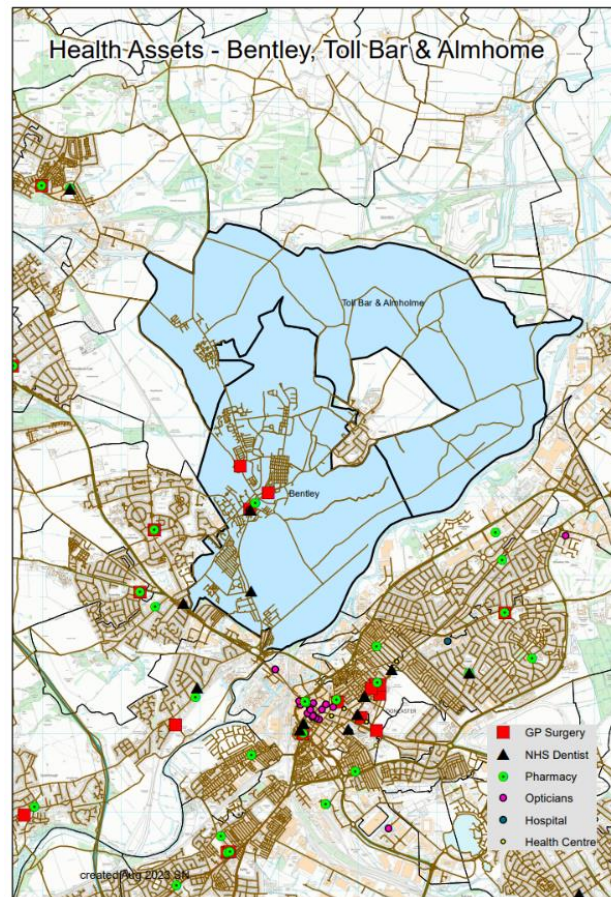


Figure 7. Health assets in Bentley, Toll Bar and Almholme

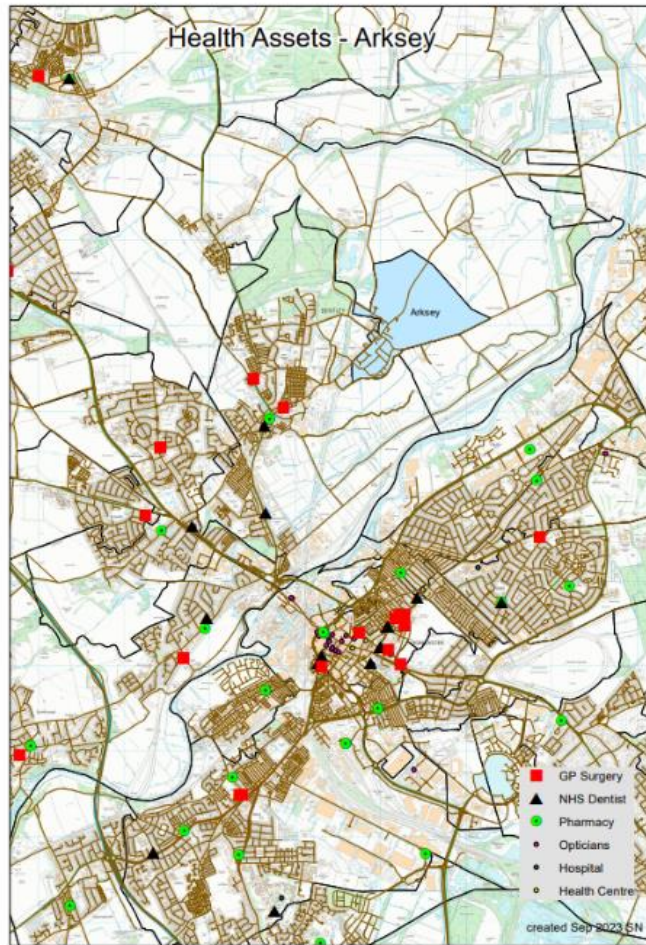


Figure 8. Health Assets in Arksey

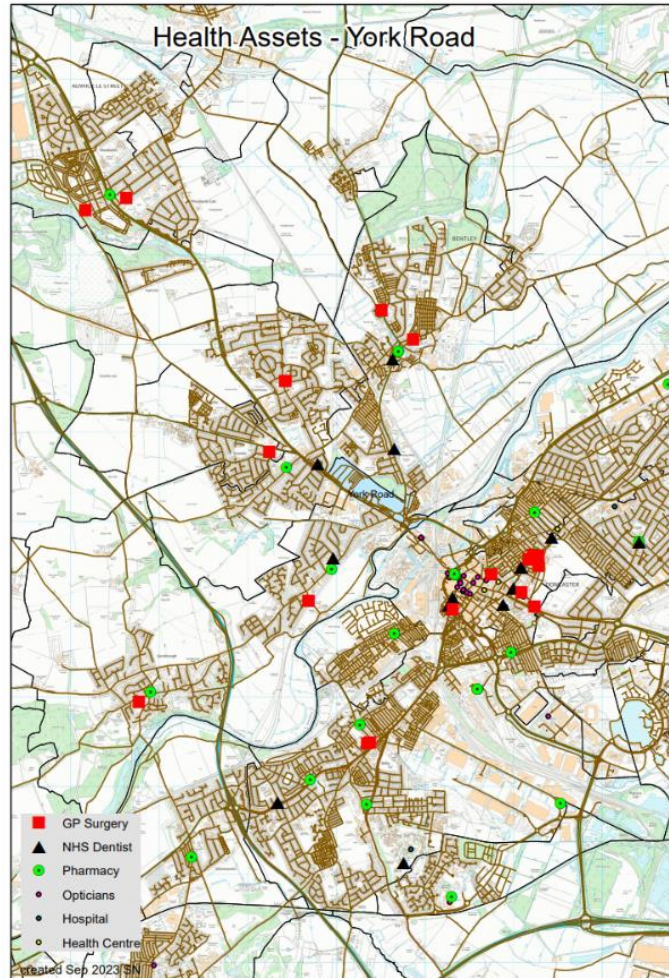


Figure 9. Health Assets on York Road

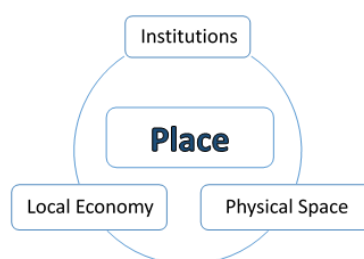
It is recognised that work is needed in the community to expand the understanding of who, how and what is accessed in the area. Greater knowledge of the identity of each community/ward will allow a more appropriate and effective response to community needs. Bentley and Toll Bar remain as priority areas for North Doncaster and ongoing work will continue to support it.

## Assets in the Community

### Population Health Management

It is vital to understand the effect and direction the pandemic and cost of living crisis is having on community organisations in the ward so that appropriate and targeted support can be offered, and work can be implemented to manage any gaps or risks associated with changes. To support the former, Well Doncaster officers undertake regular population health management insight with community organisations in Bentley, identifying their current status and needs, and work with each group and partners to meet their goals. This is a living document and will be updated and adapted as needs are met and change. If you would like more detail on this, please contact [welldoncaster@doncaster.gov.uk](mailto:welldoncaster@doncaster.gov.uk)

As part of a population health management approach, the following assets have been identified and themed around place and people:



Bentley		
Institutions (Schools/colleges etc.)	Physical space (Parks, carparks etc.)	Local Economy (Local Profitable Businesses)
<b>Health/Care Services:</b> <ul style="list-style-type: none"> <li>Well Pharmacy</li> <li>D&amp;R Sharp Chemists</li> <li>Emerald Lodge Rehabilitation Unit</li> <li>The Jade Centre</li> <li>Positive Step (Social Care Assessment Unit)</li> <li>Robinson Dental</li> <li>Brady Dental Practice</li> <li>Bentley Surgery</li> <li>Dr Sheikh's Surgery</li> <li>The Ransome Practice</li> </ul> <b>Other:</b>	<b>Parks:</b> Public service buildings: <ul style="list-style-type: none"> <li>Kirkstone Close Communal Hall</li> </ul> <b>Leisure:</b> <ul style="list-style-type: none"> <li>Bentley Allotments, The Avenue</li> <li>Arthur Street Allotments</li> <li>Cawdor Street Allotments</li> </ul> <b>Physical Activity/Sports Facilities:</b> <ul style="list-style-type: none"> <li>Bentley Road Football Pitch</li> <li>AFC Bentley Football Pitch</li> <li>Bentley Colliery Cricket Club Field</li> </ul>	<b>Shops:</b> <ul style="list-style-type: none"> <li>Danum Home Hardware</li> <li>Lidl</li> <li>Tesco Express</li> <li>Bentley Bargain Booze</li> <li>Centurion Retail Park (Pets at Home, Morrisons, Maplin, Xercise4Less, SCS)</li> <li>Signline</li> <li>Bentley Food &amp; Wine</li> <li>Big Day's Plus Size Bridal</li> <li>Pandr</li> <li>Heron Foods</li> <li>Premier</li> <li>Genius Tech</li> <li>M&amp;M Food &amp; Wine</li> <li>E-Cloud</li> <li>E-vape</li> <li>Geoff Happs Trophies</li> </ul>

<ul style="list-style-type: none"> <li>• Bentley Family Hub</li> <li>• My Space (Youth Hub)</li> <li>• Refuge for troubled young women</li> <li>• Renew Wellbeing Centre</li> <li>• Clouds Community Counselling Service</li> </ul> <p>Places of Worship:</p> <ul style="list-style-type: none"> <li>• St Peter's Church</li> <li>• St Phillip &amp; St James Church</li> <li>• Bentley Baptist Church</li> <li>• Bentley Pentecostal Church</li> <li>• Our Lady of Perpetual Help RC Church</li> <li>• Doncaster Seventh Day Adventist Church</li> <li>• Kingdom Hall of Jehovah's Witnesses</li> <li>• Doncaster Christadelphians</li> <li>• The Methodist Church in Bentley</li> <li>• Mount Hermon Community Church</li> </ul> <p>Education:</p> <ul style="list-style-type: none"> <li>• Bentley High Street Primary School</li> <li>• Our Lady of Perpetual Help Catholic School</li> <li>• Bentley New Village Primary School</li> </ul>	<ul style="list-style-type: none"> <li>• Bentley Social Welfare and Recreation Ground</li> <li>• New Village MUGA</li> <li>• Bentley Park MUGA</li> <li>• Bentley Park Football Pitch</li> <li>• Bentley Park Bowling Green</li> <li>• My Place Sports Hall</li> <li>• KT Danz Studio</li> <li>• The MA Performing Arts Studio</li> <li>• Herco's Gym</li> <li>• Rework Functional Fitness</li> <li>• PureGym</li> </ul>	<ul style="list-style-type: none"> <li>• Parkgate Mobility</li> <li>• Fusion Lamps</li> <li>• Clean as a whistle</li> <li>• Today's Local Mini Market</li> <li>• Queenies Shoes</li> </ul> <p>Food/ Beverage:</p> <ul style="list-style-type: none"> <li>• Fish Bits</li> <li>• Moona Café</li> <li>• Bentley Brothers Café</li> <li>• Grandad Joe's Café</li> <li>• The Pit Stop Café</li> <li>• McDonalds</li> <li>• Khan's Balti House</li> <li>• Posh Pizza</li> <li>• China Garden</li> <li>• The Bay Horse</li> <li>• Rhinos Bar</li> <li>• Bentley West End Sports and Social Club</li> <li>• Bentley Top Club</li> <li>• Masala Restaurant</li> <li>• Little T's Café</li> <li>• Queens House</li> <li>• Devon's Kitchen</li> <li>• Lucky 6 Takeaway</li> <li>• Jumbo Chinese Takeaway</li> <li>• Pizza Jim</li> <li>• Delicious</li> <li>• Big Dee</li> <li>• Country Kitchen</li> <li>• Panino</li> <li>• Munch Pizzeria &amp; Grill</li> <li>• Tuminose take away</li> <li>• The B.E.S.T Café</li> <li>• Shiraz Café</li> <li>•</li> </ul>
---	--	---

<ul style="list-style-type: none"> <li>• Kirkby Avenue Primary School</li> <li>• Big Picture</li> </ul> <p>Care Homes:</p> <ul style="list-style-type: none"> <li>• Chapel Garth EMI Residential Care Home</li> <li>• Positive Step, The Avenue</li> <li>•</li> </ul> <p>GRT:</p> <ul style="list-style-type: none"> <li>• Stockbridge Lane (Private)</li> <li>• Romany Way, Stockbridge Lane (Private)</li> </ul>		
Toll Bar & Almholme		
Institutions (Schools/colleges etc.)	Physical space (Parks, car parks etc.)	Local Economy (Local Profitable Businesses)
<p><b>Schools</b></p> <ul style="list-style-type: none"> <li>• Toll Bar Primary School</li> </ul> <p>GRT sites:</p> <ul style="list-style-type: none"> <li>• Tilts Farm (Private)</li> <li>• Pony Paddocks, Hall Villa Lane (Private)</li> </ul>	<p>Parks:</p> <ul style="list-style-type: none"> <li>• Northfield Avenue (DN5 0QY)</li> <li>• Linden Walk (DN5 0RN)</li> <li>• Hall Villa Lane (DN5 0LG)</li> <li>• Adwick Lane (DN5 0QZ)</li> </ul> <p>St Leger Communal Halls:</p> <p><b>Toll Bar</b></p> <ul style="list-style-type: none"> <li>• Toll Bar Villa Gardens Communal Hall</li> </ul>	<p>Food/ Beverage:</p> <ul style="list-style-type: none"> <li>• Toll Bar Grill take away</li> </ul> <p>Shops:</p> <ul style="list-style-type: none"> <li>• Toll Bar Post Office</li> <li>• We Buy Any Caravan or Motorhome</li> <li>• A19 Laundrette</li> <li>• Adwick Caravans</li> <li>• Autopaint</li> <li>• Balloon Boutique</li> <li>• Oakwood Boarding Kennels and Cattery</li> <li>• Arundell Veterinary Care</li> </ul>
York Road		
Institutions (Schools/colleges etc.)	Physical space (Parks, car parks etc.)	Local Economy (Local Profitable Businesses)
<p><b>Health:</b></p> <ul style="list-style-type: none"> <li>• Scawsby Health Centre</li> </ul>	<p>Sports:</p> <ul style="list-style-type: none"> <li>• Wheatley Hills RUFC Rugby Pitches</li> </ul>	

Arksey		
<b>Education:</b>	Primary	Parks:
<ul style="list-style-type: none"> <li>Arksey School</li> </ul>		<ul style="list-style-type: none"> <li>Station Road playing field (DN5 0SD)</li> </ul>



Bentley	
INDIVIDUALS (Key Individuals within the community and why)	ASSOCIATIONS Local Groups/Clubs
<p>Ward Members</p> <ul style="list-style-type: none"> <li>James Church</li> <li>Charlie Hogarth</li> <li>Jane Nightingale</li> </ul> <p>Community Members</p> <p>Professionals:</p> <ul style="list-style-type: none"> <li>Well Doncaster Team</li> <li>Communities Team</li> <li>Locality Team</li> <li>Early Years</li> <li>Doncaster Children’s Services Trust</li> <li>Family Hub</li> <li>St Leger</li> <li>PSCO</li> <li>Bentley Surgery</li> <li>Primary School Head Teachers</li> <li>Primary Care Network</li> <li>Social Prescribing Team</li> <li>Aspire</li> <li>The Conservation Volunteers</li> </ul>	<p>Support:</p> <ul style="list-style-type: none"> <li>The Royal British Legion Social Club</li> <li>Dementia Support Group</li> <li>Bentley Diabetes Peer Support Group</li> <li>Bentley Fibromyalgia Peer Support Group</li> <li>Cancer Support Group</li> <li>MIND Social Group</li> <li>Making Space (Carers)</li> <li>Postnatal Support Group</li> <li>SEN/LDD Youth Group</li> <li>Flood Action Group</li> <li>Bentley Food Bank</li> </ul> <p>Physical Activity/Sports:</p> <ul style="list-style-type: none"> <li>AFC Bentley</li> <li>Bentley Baptist FC</li> <li>Bentley Top Club</li> <li>Bentley Colliery Bowling Club</li> <li>Bentley Bowls Club/Social Bowling</li> <li>Bentley Colliery Cricket Club</li> <li>Martial Arts Doncaster</li> <li>Tai Chi</li> <li>Vital Strides</li> <li>Keep Fit</li> <li>Yoga for All</li> <li>KT Danz Studios</li> <li>Line Dancing</li> <li>Bentley Health Walk</li> <li>Bentley Amateur Boxing Club</li> <li>Bentley West End Sports &amp; Social FC</li> </ul>

	<p>Community groups:</p> <ul style="list-style-type: none"> <li>• Little Fishes</li> <li>• Toddler Group</li> <li>• Beavers, Cubs and Scouts</li> <li>• Stay and Play</li> <li>• Future Pathways</li> <li>• Bentley Area Community Partnership (BACuP)</li> <li>• Bentley Resilience Group</li> <li>• North Doncaster Development Trust (NDDT)</li> <li>• SMILE</li> <li>• Busy Needles</li> <li>• Craft Group</li> <li>• Readers Group</li> <li>• Art Club</li> <li>• Cake Icing Decoration Group</li> <li>• Bentley/Arksey Heritage Society</li> <li>• Bentley Community Choir</li> <li>• Luncheons – Pentecostal Church and Mount Hermon Church</li> <li>• Bentley Social Entertainment Group</li> <li>• Friends of Bentley New Village</li> <li>• Homestead Coffee Morning</li> </ul> <p>TARAs:</p> <ul style="list-style-type: none"> <li>• Toll Bar TARA (1 o'clock club, exercise group, bingo/quiz, coffee mornings, children's dance)</li> <li>• Bentley Town End TARA</li> <li>• Hartsworth Flats TARA</li> <li>• </li> </ul>
<b>Toll Bar &amp; Almholme</b>	
<b>INDIVIDUALS</b> (Key Individuals within the community and why)	<b>ASSOCIATIONS</b> Local Groups/Clubs
<p>Ward Members</p> <ul style="list-style-type: none"> <li>• James Church</li> <li>• Charlie Hogarth</li> <li>• Jane Nightingale</li> </ul> <p>Community Members</p> <p>Professionals:</p> <ul style="list-style-type: none"> <li>• Well Doncaster Team</li> <li>• Communities Team</li> <li>• Locality Team</li> </ul>	<p>Sports Clubs:</p> <ul style="list-style-type: none"> <li>• Toll Bar ARLFC</li> <li>• Toll Bar Central Angling Club</li> </ul> <p>TARA:</p> <ul style="list-style-type: none"> <li>• Toll Bar TARA (1 o'clock club, exercise group, bingo/quiz, coffee mornings, children's dance)</li> </ul>



<ul style="list-style-type: none"> <li>• Early Years</li> <li>• Doncaster Children’s Services Trust</li> <li>• Family Hub</li> <li>• St Leger</li> <li>• PSCO</li> <li>• Bentley Surgery</li> <li>• Primary School Head Teachers</li> <li>• Primary Care Network</li> <li>• Social Prescribing Team</li> <li>• Aspire</li> <li>• The Conservation Volunteers</li> </ul>	
York Road	
<b>INDIVIDUALS</b> (Key Individuals within the community and why)	<b>ASSOCIATIONS</b> Local Groups/Clubs
Ward Members <ul style="list-style-type: none"> <li>• James Church</li> <li>• Charlie Hogarth</li> <li>• Jane Nightingale</li> </ul> Community Members Professionals: <ul style="list-style-type: none"> <li>• Well Doncaster Team</li> <li>• Communities Team</li> <li>• Locality Team</li> <li>• Early Years</li> <li>• Doncaster Children’s Services Trust</li> <li>• Family Hub</li> <li>• St Leger</li> <li>• PSCO</li> <li>• Bentley Surgery</li> <li>• Primary School Head Teachers</li> <li>• Primary Care Network</li> <li>• Social Prescribing Team</li> <li>• Aspire</li> <li>• The Conservation Volunteers</li> </ul>	Sports: <ul style="list-style-type: none"> <li>• Wheatley Hills RUFC</li> </ul>
Arksey	
<b>INDIVIDUALS</b> (Key Individuals within the community and why)	<b>ASSOCIATIONS</b> Local Groups/Clubs
Ward Members <ul style="list-style-type: none"> <li>• James Church</li> <li>• Charlie Hogarth</li> <li>• Jane Nightingale</li> </ul> Community Members	Women: <ul style="list-style-type: none"> <li>• Women’s Association</li> </ul>

Professionals:

- Well Doncaster Team
- Communities Team
- Locality Team
- Early Years
- Doncaster Children’s Services Trust
- Family Hub
- St Leger
- PSCO
- Bentley Surgery
- Primary School Head Teachers
- Primary Care Network
- Social Prescribing Team
- Aspire
- The Conservation Volunteers

Ward Members



Councillor James

Church

Bentley  
Labour



Councillor Charlie  
Hogarth

Bentley  
Labour



Councillor Jane  
Nightingale

Bentley  
Labour  
Portfolio Holder  
for Corporate  
Resources



## Health and Wealth

Health inequalities are avoidable differences across the population, and between different groups within society. Health inequalities arise from the conditions in which we live, work and play. These conditions influence our opportunities for good health, how we think, feel and act, therefore shaping our health and wellbeing.

### Deprivation

Evidence shows that people living in our most deprived areas face the worse health inequalities in relation to health access, experiences and outcomes. Deprivation covers a range of issues and refers to unmet needs caused by a lack of resources, including but not limited to finances, housing and education. It is measured in different ways including the Indices of Multiple Deprivation (IMD). Bentley remains less deprived with an IMD score of 34.6 in comparison to the borough average of 30.3. The map below, however, shows that Bentley falls within the 10% most deprived communities in Doncaster.

*Table 1. Index of Multiple Deprivation Rank in 2019 and 2015*

Locality	Ward	Community	IMD19	Rank
South	Conisbrough	Denaby Main	67.85232038	1
South	Conisbrough	Old Denaby	64.733	2
North	Adwick le Street & Carcroft	Highfields	59.536	3
Central	Town	Town Centre	56.21122202	4
Central	Hexthorpe & Balby North	Hexthorpe	55.2641321	5
East	Stainforth & Barnby Dun	Stainforth	51.79234255	6
North	Bentley	Toll Bar & Almholme	49.875	7
Central	Town	Hyde Park	49.69051268	8
North	Adwick le Street & Carcroft	Carcroft	47.53445768	9
Central	Town	Lower Wheatley	44.32955964	10

The map below shows that Bentley ward falls within the top 10 most deprived areas in Doncaster at ward level. IMD measures relative levels of deprivation in small areas, called Lower-layer Super Output Areas (LSOA). Data taken at LSAO level suggests deprivation varies considerably amongst communities with Bentley. Toll Bar and Almholme rank the most deprived community in Bentley ward and seventh most deprived community within Doncaster with an IMD score of 49.87 (Table 1). This is followed by Bentley community itself, ranked 16<sup>th</sup> most deprived community overall in Doncaster with an IMD score of 40.1. York Road (IMD score of 28.9) and Arksey (IMD score of 21.25) are both communities in the Bentley ward boundaries but with significantly lower levels of deprivation.

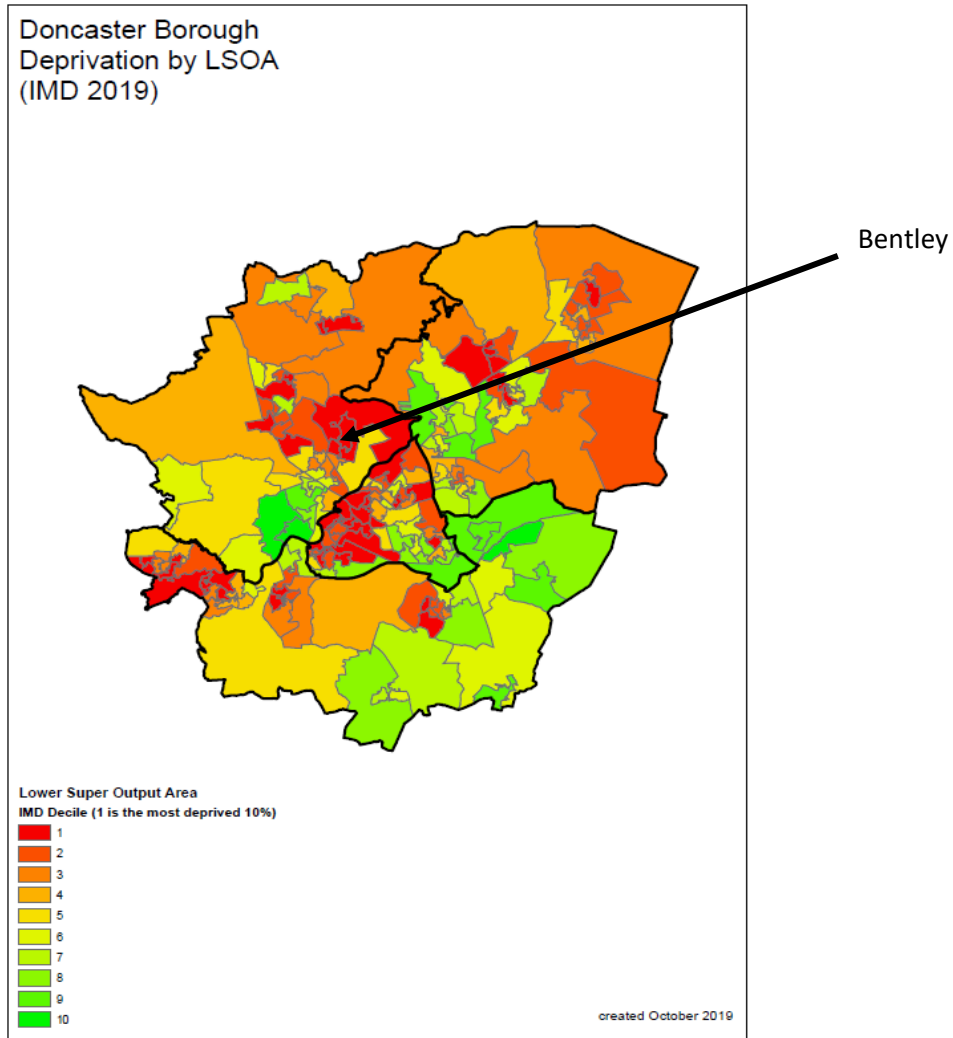


Figure 10. *Doncaster Index of Multiple Deprivation changes between 2015-2019*

### Wealth Inequalities

Many Bentley residents are currently living in poverty across the life course, which reflects the high level of multiple deprivation.

Public Health England data shows there is a higher proportion of residents in Bentley (19.6%) living in deprivation due to low income compared to the Doncaster (16.6%) and national average (12.9%). It should be noted that this data reflects levels of both unemployment rates and working-age adults on low earnings.

### Fuel Poverty

Table 2. *Rates of Fuel Poverty at LSOA level in Adwick Le Street & Carcroft (Office of National Statistics, 2022)*

LSO A Code	LSOA Name	Community Name	Number of households	Number of households in fuel poverty	Proportion of households' fuel poor (%)
------------	-----------	----------------	----------------------	--------------------------------------	---

E010 0750 5	Doncaster 013A	Arksey	722	109	15.1
E010 0750 6	Doncaster 010A	Bentley New Village North	730	173	23.7
E010 0750 8	Doncaster 010B	Bentley New Village South	700	232	33.1
E010 0750 9	Doncaster 010C	Bentley Rostholm e	823	239	29
E010 0751 0	Doncaster 010D	Bentley Church Street	775	157	20.3
E010 0751 1	Doncaster 010E	Toll Bar & Almholme	623	142	22.8
E010 0751 2	Doncaster 012A	Scawthorp e Sunnyfield s	895	121	13.5
E010 0751 3	Doncaster 012B	Bentley Mill Dyke Bridge	703	115	16.4
E010 0751 4	Doncaster 013B	Bentley Rise North	718	242	33.7
E010 0751 6	Doncaster 013C	Bentley Kirkby Avenue	654	122	18.7
E010 0751 7	Doncaster 013D	York Road	733	218	29.7
E010 0758 4	Doncaster 021A	Marshgate	710	125	17.6

Many residents are living in fuel poverty. Fuel poverty is defined as a household living on a lower income that is not deemed reasonable enough to warm a home sufficiently. According to fuel poverty by Parliamentary constituency, North Doncaster has the highest rates of fuel poverty (19.1%) in comparison to Don Valley (15.4%) and Central Doncaster (18.1%). In 2020, 21.9% of adults in Bentley ward were unable to warm their homes to a reasonable standard compared to Doncaster's average (18.8%). Data taken at LSOA level suggests residents living in Bentley Rise

North and Bentley New Village South are facing significantly higher levels of fuel poverty than any other community in Bentley ward.

### Older people living in poverty (IDAOPI)

Older people living in poverty (IDAOPI) is another area of concern. In Bentley, 20.3% of older people are currently living in deprivation because of income deprivation. Such poverty can also have detrimental effects on child development. The Income Deprivation Affecting Children Index (IDACI) shows that 26.4% of children are living in households affected by low incomes compared to Doncaster (22.7%) and England's (17.1%) average.

### Food Poverty

There are 8 active foodbanks in the North locality of Doncaster. Seventh Day Adventist, Bentley Baptist Church and Manna Community CIC all provide foodbanks for Bentley residents. Cost of Living Crisis, Low income, Benefit Changes, Debt and Benefit delays are the top 5 reasons for residents accessing support from foodbanks across Doncaster. Figure 5 shows demand for food support has increased since April 2022 across North of Doncaster. An average of 164 adults are supported by food parcels every month in North of Doncaster, whilst 97 children are supported by food parcels every month. It must be noted that this data does highlight where residents are accessing support, and therefore it is unknown where food poverty is more prevalent.

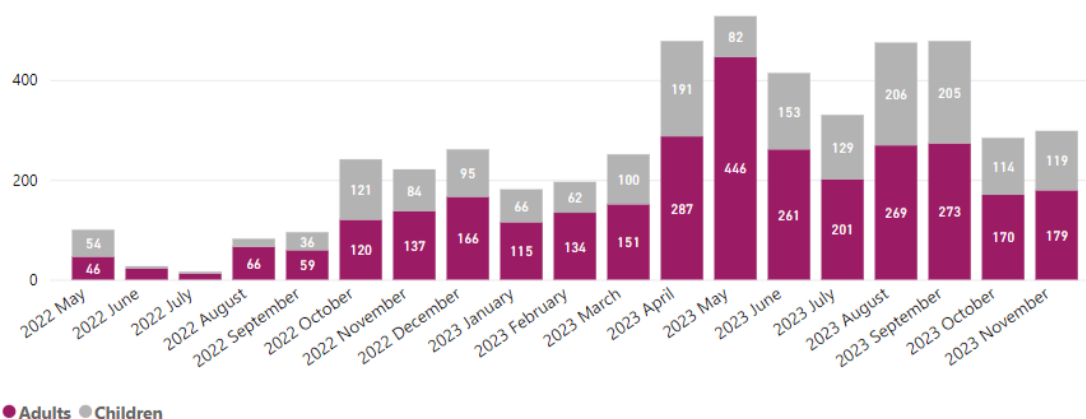


Figure 11. Number of Adults and Children accessing foodbanks in North of Doncaster (2023)

### Employment

According to the 2021 Census, over half of the population (55.7%) are not in employment, with 31.7% of these residents having never worked. There is a significantly higher proportion of working age adults currently unemployed and claiming out of work benefits in Bentley ward (7.1%) in comparison to the average of England (5%) and Doncaster (6.1%). This is also reflected in the high proportion of residents aged over 16 years of age (41.8%) who are economically inactive in comparison to England (39.1%). Given the coronavirus pandemic was declared in early 2020 and this data was taken across 2021/22, rates of short-term unemployment may reflect the increased levels of job losses during this time.

Of those employed, the highest proportion of people in Bentley are employed in elementary occupations (19.1%), which is nearly double the amount of people when compared to England (10.5%). Those employed in highly skilled occupations such as managers, directors and senior officials are significantly lower across Bentley ward (8.3%) in comparison to Doncaster (10.2%) and England (12.9%). Additionally, there are very few people employed in professional occupations in Bentley (9.5%), which is significantly lower than England (20.3%). Skilled trades occupations (12.4%) make up the second largest proportion of employment rates in Bentley. This highlights the need for development in employment, skills and training opportunities available to Bentley residents.

A high proportion of residents in employment have less than 10km to travel to work (48.8%) compared to Doncaster (41.7%) and England (35.4%) average. However, a considerably higher proportion of adults travel to work by car or van from Bentley (57.9%) compared to Doncaster (57.9%) and England and less than 10% of residents walk or cycle to work. This suggests public health interventions to improve active travel should be a priority in Bentley ward to improve physical activity levels and reduce carbon emissions.

### Citizens Advice Doncaster Borough

Citizens advice Doncaster Borough (CADB) are an independent charity and part of the Citizens Advice Network across England and Wales. They provide free, confidential and impartial advice and campaign on money, benefit, housing or employment issues affecting people’s lives. There are 185 residents living in Bentley currently accessing CADB. During the 2023/24 fiscal year, Bentley has the highest number of interactions with CADB in the North of Doncaster. Benefits and tax credits, debt, utilities and communications, benefits and universal credits and housing issues are the top 5 issues when seeking support.

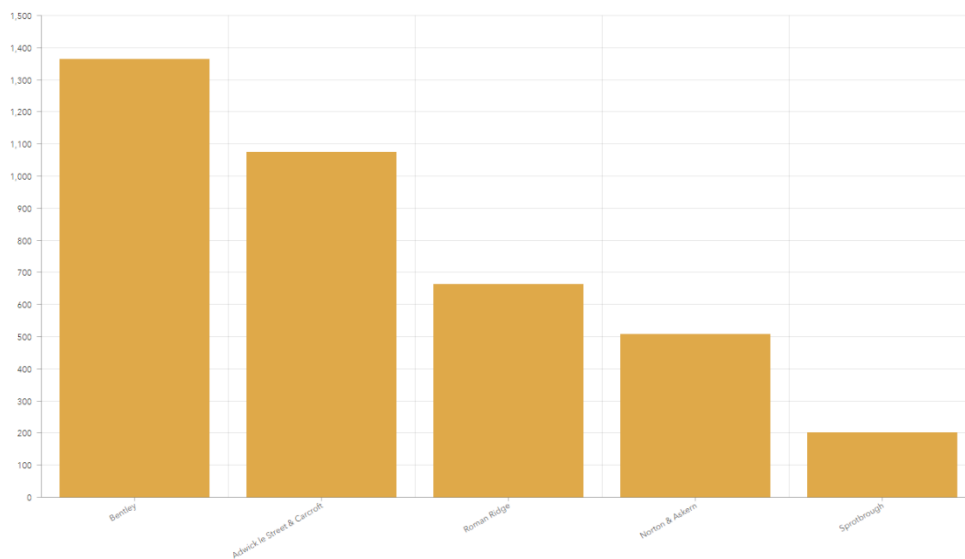


Figure 12. number of interactions with Citizens Advice Doncaster Borough (CADB) during fiscal year 2023/24

## Childhood Development

Childhood obesity is significantly higher in Bentley with 25% of children classified as obese at reception age compared to the average of Doncaster (22%). This figure increases to 26% at year 6 and is significantly higher than those reported for England. However, data shows food habits have improved in school aged children over the last 12 months. That is, 71% of children reported to consume fruit and vegetables most or every day of the week in 2021 compared to 63% in 2020. However, 19% of pupils reported to consume takeaways most or every day of the week compared to Doncaster's 13% average. This suggests public health interventions may need to focus on educating school aged children and parents on food choices.

## Smoking Exposure

The 2020-21 Pupil Lifestyle Survey which included primary and secondary schools, reported that 47% of school aged children encountered smoking in the home in Bentley ward, which is significantly higher than the Doncaster average of 35%. Evidence suggests growing up in a home where smoking occurs is one of the biggest risk factors to children becoming smokers themselves and may explain the high rates of children that have reported smoking at school-age. That is, 12% of year 8 and 10 children reported they had tried cigarettes or smoking and 19% of pupils reported they have used or tried e-cigarettes in North locality.

## Education

At KS4, each pupil is given an Attainment 8 score (a score out of 90) based on their 8 best GCSE grades including English, maths and at least 3 other traditional academic GCSEs (sciences, languages, and humanities). Other qualifications at an equivalent level (e.g., BTECs) can also count towards the score. In 2022, GCSE attainment scores per pupil (out of 90) were varied across Greater Bentley. Arksey (57.1) has the highest scores, closely followed by York Road (51.1) and Norton (50.6), whilst Toll Bar and Almholme (37.7) appeared one of the lowest in Bentley and Doncaster overall. In 2023, 45% of Arksey pupils, 54% of Bentley, Toll Bar and Almholme pupils and 53% of York Road pupils achieved the expected standard in reading, writing, and mathematics at key stage 2, all below the national average (60%).

## Health Inequalities

### Long-Term Health Conditions

The proportion of residents with poor health in Bentley is considerably greater than the national average. Over 21% of ward residents reported having poor general health compared to an average of 17.6% across England. A total of 23.3% of Bentley residents, 24.3% of Toll Bar residents, 22.7% of Arksey residents and 19.8% York Road residents reported their health to be fair, bad, or very bad health (ONS, 2021).

Long term health conditions derived from poor lifestyle choices, living conditions and physical inactivity are a cause for concern in Bentley. Incidences of cancers are significantly higher in Bentley residents (113 per 100) compared to Doncaster (107 per 100) and England (100 per 100). More specifically, lung cancer rates in Bentley (165 per 200) is the 6<sup>th</sup> highest rate in Doncaster and considerably higher than the national average (100). Chronic Obstructive Pulmonary Disease (COPD), another lung related



illness, is also the 2<sup>nd</sup> leading cause of emergency hospital admissions amongst Bentley residents (1230 per 100).

Strokes are the leading cause of emergency hospital admissions with a significant 134.7 per 100 occurring. Additionally, deaths caused by conditions related to poor lifestyle choices are high, particularly deaths occurring in those ages under 75. Deaths caused by cancers (132.9 per 100,00), circulatory disease (119.2 per 100), coronary heart disease (CHD) (149 per 100) and respiratory diseases (153.1 per 100).

### Alcohol Intake

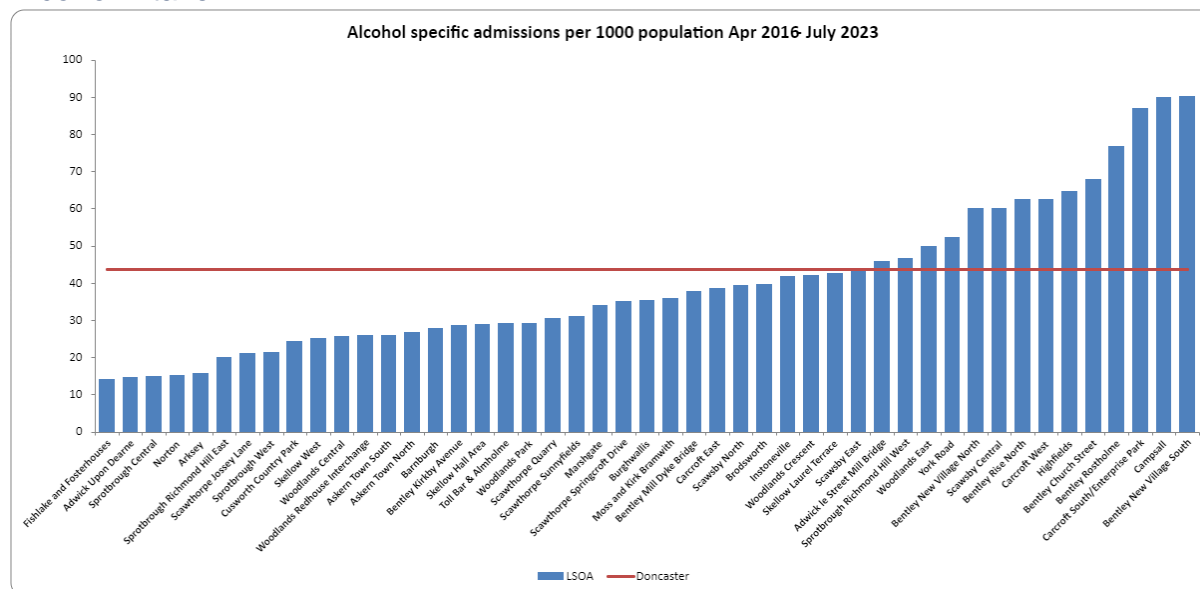


Figure 13. Alcohol Specific Admissions per 1000 population April 2016-2023 (ONS, 2021)

Communities in Bentley have some of the highest rates of alcohol specific admissions in Doncaster (figure 6). Bentley New Village South (90.2 per 1000) has the highest rates in Doncaster, more than double that of Doncaster city (43.6 per 1000). Bentley Rostholme (76.8 per 1000) and Bentley Church Street (67.8 per 1000) are amongst the top 5 highest rates of alcohol related admissions in Doncaster. Bentley Rise North (62.4 per 1000) is placed within the highest 10, whilst York Road (52.2 per 1000) sits as 11<sup>th</sup> highest in Doncaster.

### Smoking

Table 3. Smoking Prevalence in Primary Care Network practices across Doncaster (NHS England, 2023)

Practice	Sum of age 15+	Sum of Smokers	Sum of Prevalence
<b>The Flying Scotsman Health Centre</b>	<b>9671</b>	<b>3053</b>	<b>31.57%</b>
<b>Frances Street Medical Centre</b>	<b>5931</b>	<b>1532</b>	<b>25.83%</b>
<b>The New Surgery</b>	<b>6143</b>	<b>1447</b>	<b>23.56%</b>
<b>The Nayar Practice</b>	<b>4229</b>	<b>979</b>	<b>23.15%</b>
<b>The Ransome Practice</b>	<b>6749</b>	<b>1519</b>	<b>22.51%</b>

<b>Edlington Health Centre Practice</b>	<b>4010</b>	<b>877</b>	<b>21.87%</b>
<b>Thorne Moor Medical Practice</b>	<b>7867</b>	<b>1688</b>	<b>21.46%</b>
<b>Conisbrough Medical Practice</b>	<b>1377</b>	<b>287</b>	<b>20.84%</b>
<b>Askern Medical Practice</b>	<b>6441</b>	<b>1333</b>	<b>20.70%</b>
<b>Field Road Surgery</b>	<b>7840</b>	<b>1615</b>	<b>20.60%</b>
<b>Kingthorne Group Practice</b>	<b>11261</b>	<b>2272</b>	<b>20.18%</b>
<b>Northfield Surgery</b>	<b>8405</b>	<b>1681</b>	<b>20.00%</b>
<b>Mexborough Health Centre</b>	<b>4130</b>	<b>821</b>	<b>19.88%</b>
<b>Great North Medical Group</b>	<b>13539</b>	<b>2682</b>	<b>19.81%</b>
<b>Regent Square Group Practice</b>	<b>8533</b>	<b>1675</b>	<b>19.63%</b>
<b>Conisbrough Group Practice</b>	<b>9756</b>	<b>1906</b>	<b>19.54%</b>
<b>Don Valley Healthcare</b>	<b>11148</b>	<b>2157</b>	<b>19.35%</b>
<b>St. Johns Group Practice</b>	<b>7301</b>	<b>1373</b>	<b>18.81%</b>
<b>The Scott Practice</b>	<b>12879</b>	<b>2327</b>	<b>18.07%</b>
<b>The Rossington Practice</b>	<b>6766</b>	<b>1207</b>	<b>17.84%</b>
<b>The Lakeside Practice</b>	<b>7261</b>	<b>1280</b>	<b>17.63%</b>
<b>Denaby Medical Practice</b>	<b>2921</b>	<b>509</b>	<b>17.43%</b>
<b>West End Clinic</b>	<b>3706</b>	<b>643</b>	<b>17.35%</b>
<b>White House Farm Medical Centre</b>	<b>5181</b>	<b>867</b>	<b>16.73%</b>
<b>Asa Medical Group</b>	<b>16707</b>	<b>2794</b>	<b>16.72%</b>
<b>Petersgate Medical Centre</b>	<b>7633</b>	<b>1225</b>	<b>16.05%</b>
<b>St Vincent Medical Centre</b>	<b>12203</b>	<b>1817</b>	<b>14.89%</b>
<b>The Oakwood Surgery</b>	<b>4797</b>	<b>677</b>	<b>14.11%</b>
<b>Mount Group Practice</b>	<b>11271</b>	<b>1567</b>	<b>13.90%</b>
<b>Scawsby Health Centre Practice</b>	<b>4850</b>	<b>655</b>	<b>13.51%</b>
<b>The Burns Practice</b>	<b>13152</b>	<b>1717</b>	<b>13.06%</b>
<b>Hatfield Health Centre</b>	<b>7785</b>	<b>952</b>	<b>12.23%</b>
<b>Park View Surgery</b>	<b>2126</b>	<b>238</b>	<b>11.19%</b>
<b>Dunsville Medical Centre</b>	<b>5268</b>	<b>542</b>	<b>10.29%</b>
<b>The Tickhill &amp; Colliery Medical Practice</b>	<b>7447</b>	<b>700</b>	<b>9.40%</b>
<b>The Mayflower Medical Practice</b>	<b>6353</b>	<b>544</b>	<b>8.56%</b>
<b>Barnburgh Surgery</b>	<b>2044</b>	<b>174</b>	<b>8.51%</b>
<b>Doncaster</b>	<b>274681</b>	<b>49332</b>	<b>17.96%</b>

According to NHS England (2023), there are 64045 registered patients with Doncaster North Primary Network (PCN) in North of Doncaster, 11,885 of those are registered as smokers. The Ransome Practice has the highest prevalence of smokers registered in the North locality. There are 1519 smokers registered at the GP practice, equating to 22.5% of patients, which is significantly higher than

Doncaster overall. It must be noted that such data is taken from self-reported measures when signing up to a GP and so, relies on individuals self-reporting their behaviours. It must also be noted that residents registered at GPs do not necessarily reside in that community and may not truly reflect the prevalence of smoking in specific communities.

#### Life expectancy

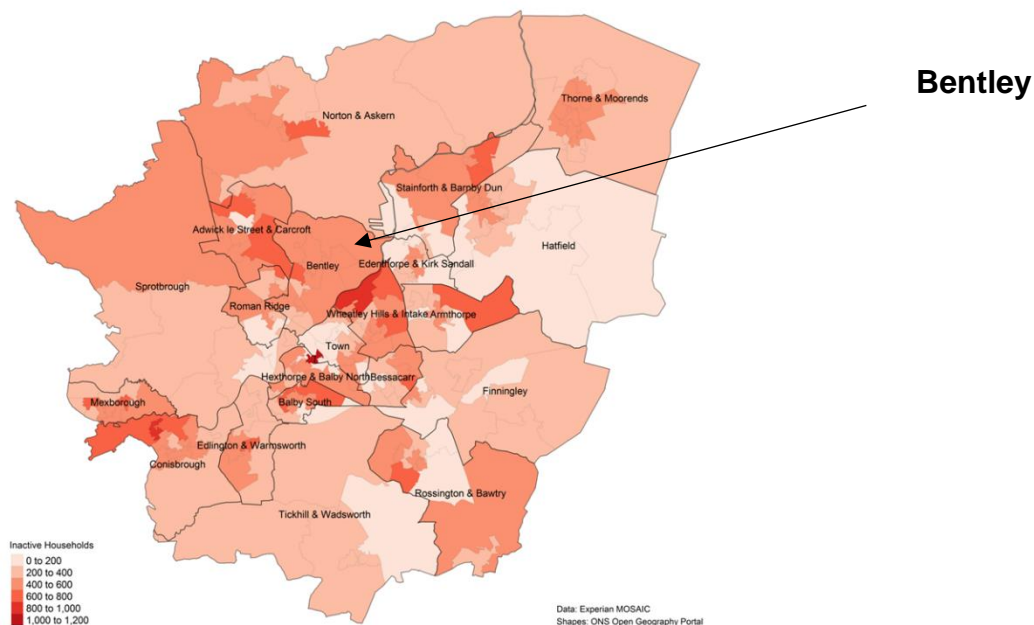
Residents of Bentley have a lower life expectancy and live more years in poor health in comparison to the averages of Doncaster and England. Life expectancies for both males and females are 3 and 5 years lower than the borough and national averages, respectively.

Males have a life expectancy of 75.8 years of age compared to the average of Doncaster 77.9 years of age and England 79.5 years of age. Female life expectancy is 75.8 years, compared to Doncaster's of 81.3 years and England's of 83.2 years of age

The higher levels of deprivation in the area and the higher prevalence of smoking, alcohol consumption and obesity could be driving the differences. Work should be undertaken to fully understand the factors affecting individual's lifestyle choices in Bentley ward and more specifically, within each community of Bentley, Tollbar, Almholme and York Rd.

## Physical Activity

Levels of physical activity in Bentley are lower compared to the rest of the borough. This is further illustrated in the map below, which identifies the areas with the highest numbers of inactive households.



Further, the table below shows that Bentley has 883 households that are likely to have high levels of inactivity. This data has been matched to the number of children and young people living in deprived and inactive households. The former data positions Bentley as an area of focus and priority for the Get Doncaster Moving Strategy. The table below shows the number of households in the priority areas of inactive, low incomes and households with children and young people:

Table 4. Get Doncaster Moving Priority communities

Community	Inactive	Low Incomes	C&YP	Total
Adwick le Street	883	877	920	2680
Denaby	951	913	514	2378
Wheatley Park & Wheatley Hills	802	885	667	2354
<b>Bentley</b>	<b>883</b>	<b>692</b>	<b>773</b>	<b>2348</b>
Edlington	667	858	726	2251
New Rossington	673	823	749	2245
Intake	651	781	668	2100
Skellow & Carcroft	594	892	563	2049
Stainforth	618	738	676	2032
Thorne	747	817	367	1931

Data from the 2021 Pupil Lifestyle Survey indicated that 48% of school-aged children in Bentley reported walking to school. This is higher than the average of Doncaster (46%). Engagement in physical activity via school clubs is 13% which is higher than the rest of the borough. Around 90% of school-aged children reported enjoying physical activity which is 3% lower than the average of Doncaster. For those who reported not enjoying physical activity, the most common reason was 'getting hot and tired' (49%).

## Green Spaces and Parks

Bentley ward is rich in green spaces with Bentley Park having won the Green Flag Award for parks in 2017, 2018, 2019 and 2020. Facilities at the park include a playing field, multi-use games area, skate park, toddler and junior play areas, a bowling green and a Pavilion with a sprung dance floor.

Bentley is also home to a Community Woodland with various accessible tracks and a lake. In 2021, the Trans Pennine Trail stretch which connects the Woodland to Bentley Park received £400k investment to the surface. This funding has improved walking and cycling routes as well as horse riding access between Bentley, Toll Bar and the outside of the Bentley ward.

Linden Walk Park in Toll Bar is included in the Get Doncaster Moving Future Parks work and it is expected in late 2023 work will begin to co-design improvements to the park with residents.

## Community Information

### Population

#### Population Size

Bentley ward: 18,200

Bentley: 11,300

Toll Bar & Almholme: 1200

Arksey: 1200

York Road: 710

### Ethnicity and Language

Bentley ward does not appear to be very diverse in ethnicity or languages spoken. Over 95% of the population residing in this ward identify as 'White' and report that their main language spoken is English.

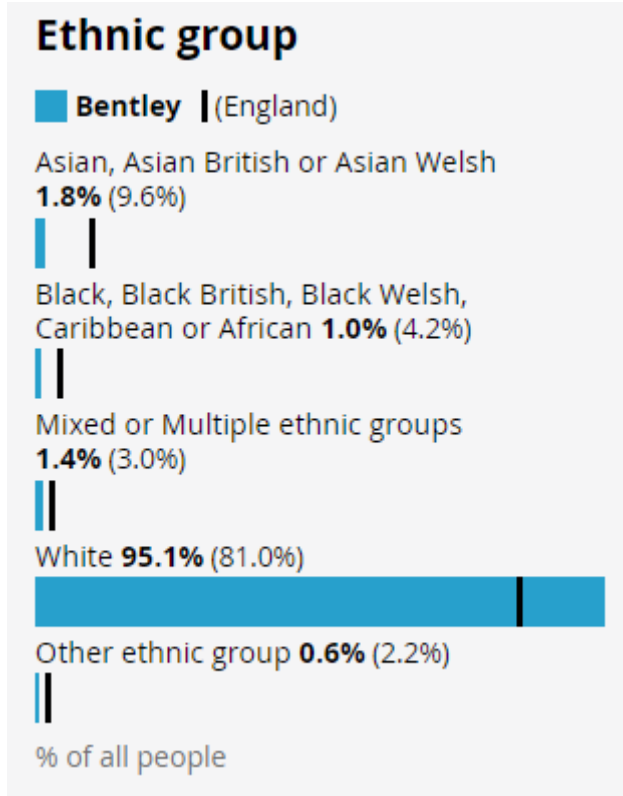


Figure 14. Ethnicity in Bentley Ward (ONS, 2021)

The Census (2021) reports Toll Bar community to have a slightly more diverse population with 3.1% of the community identifying as Asian, Asian British or Asian Welsh. It should still be acknowledged that this is significantly lower than the rest of England (9.6%).

### Age Profile

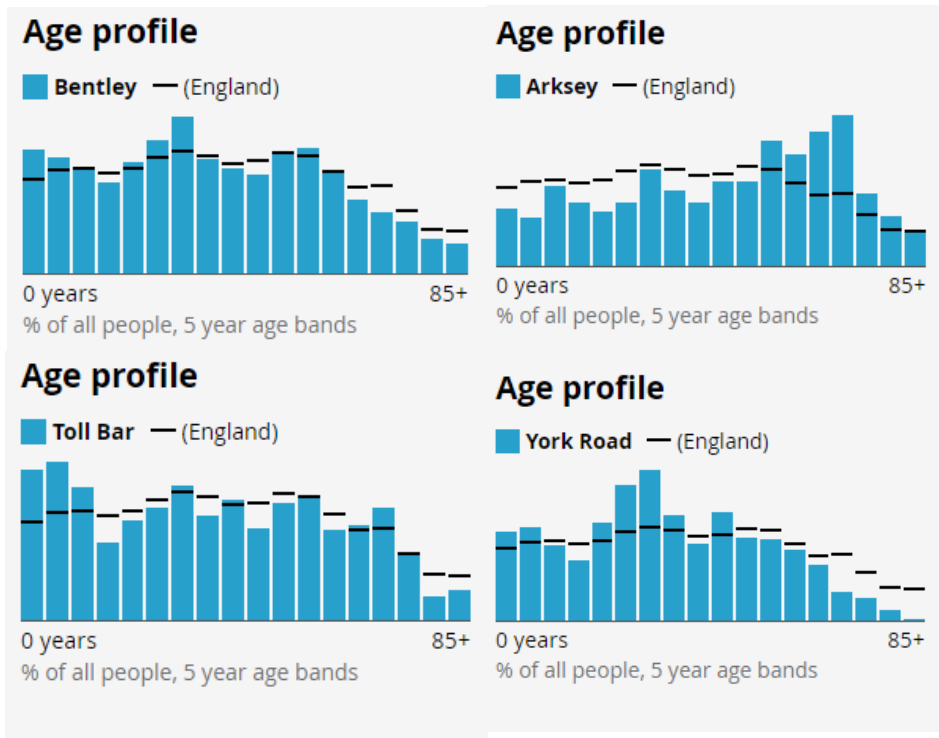


Figure 15. Age profile in Bentley ward (ONS, 2021)

Bentley as a ward has a similar aged population to the rest of England. However, there are differences within each community. Figure 15 shows that Toll Bar and York Road, have a significantly younger than average population. There are more children aged 15 and under in Toll Bar and working age adults in York Road contributing to this. Arksey has an older than average population, with a larger proportion of adults aged 55-85 residing in the community. whilst Carcroft has a much younger population. There are similar numbers of males and females within each age group category.

## Housing

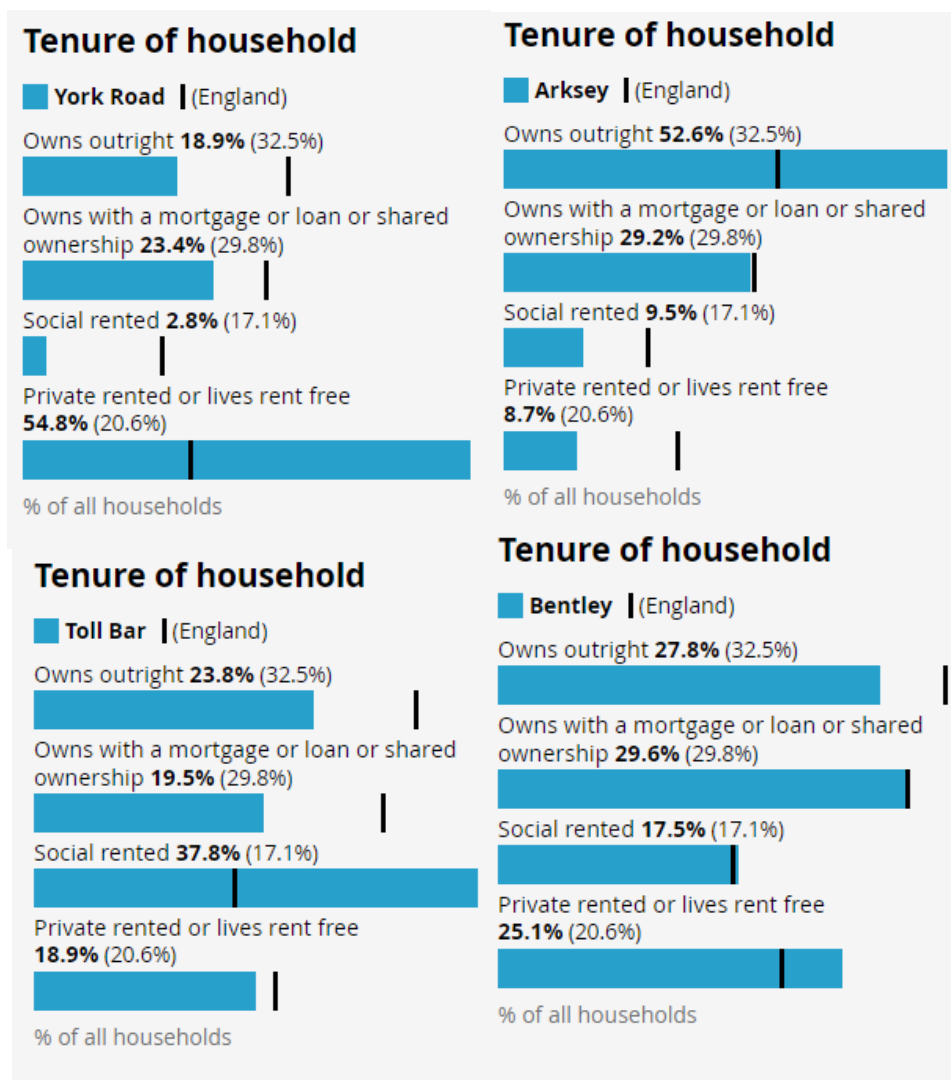


Figure 16. Tenure of Households in York Road, Arksey, Toll Bar and Bentley (ONS, 2021)

A larger proportion of residents own their house outright in Arksey (52.6%), compared to the other communities in the ward and the national average. There are more socially rented properties in Toll Bar (37.8%), which is considerably higher than the rest of Doncaster and England. There are considerably fewer properties that are privately rented in Arksey, whilst York Road and Bentley have significantly more to the rest of Doncaster.

The majority of households comprise of single-family units in Bentley (58.6%), Arksey (66.3%), Toll Bar and Almholme (64.9%) and York Road (54%). However, there is a large proportion of one-person households in Bentley (36.2%) and York Road (42.8%). Whilst Toll Bar (28%) and Arksey (29.8%) have similar rates to the rest of Doncaster. This would suggest social isolation is a priority for Doncaster. Living alone can increase the risk of a number of physical and mental health issues and thus, ensuring these individuals have the support required to live a health and fulfilling life is important.

### Anti-Social Behaviour

North locality reported the lowest number of ASB, hate crime and low-level crimes during the first 6 months of 2023/24. Figure 17 shows that Bentley had the second highest rates of crime and ASB across the North Locality.



Figure 17. Number of early interventions, ASB, hate crime and low-level crime issues identified and managed at Locality level (Stronger Communities, Doncaster Council 2023/24)



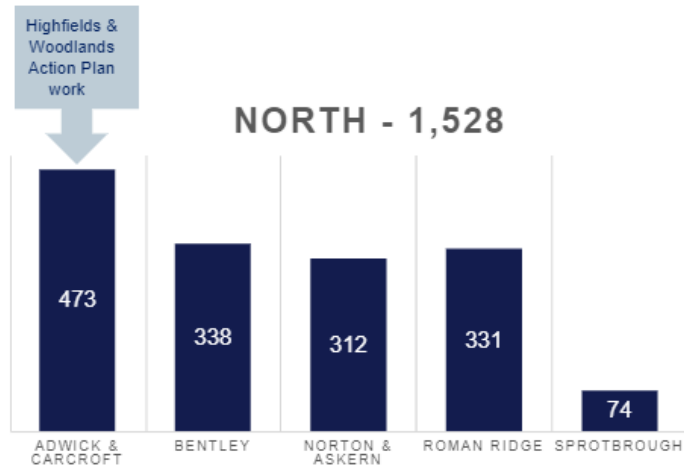


Figure 18. Number of early interventions, ASB, hate crime and low-level crime issues identified and managed at Ward level (Stronger Communities, Doncaster Council 2023/24)



## Community Insight

### Appreciative Inquiry

The Well Doncaster Team undertake an Appreciative Inquiry within communities to gather insight to support co-designing action plans with the community. The AI questions are structured to pull on the successes of the past and present, to seek new potentials and possibilities and build on those through the Dream and Design stages.

The Appreciative Inquiry will include the following steps:

1. **Discovery** – This will involve engagement with the residents of Bentley to find out what is working well in the community. Responses will be themed to allow priorities of the community to be established.
2. **Dream** – Residents and key stakeholders will be invited to attend an initial workshop to discuss what ideas they have for their community and how these will meet the priorities highlighted in the discovery phase.
3. **Design** – All attendees are invited back for a second workshop to develop an action plan to direct work for the community.
4. **Deliver** – A collaborative way of working and investing resources in working towards to the actions from the previous phase.

Community insight is captured through community conversations in Bentley, Toll Bar, Arksey, Almholme & York Rd and is an ongoing process throughout the year. Community conversations are had at various community events, meetings and through day-to-day interactions with residents and other key stakeholders in Bentley. A thematic analysis has been undertaken on community conversations had with residents and other key stakeholders of such areas thus far. Response have been developed into a thematic framework for Bentley, including Toll Bar and Almholme, York Road and Arksey. Work is underway in Arksey, Almholme and York Road to fully understand these as communities themselves and develop a thematic framework for each community. All themes identified through this process inform community development and engagement activity moving forward.

Theme	Sub theme	Quotes	Commentary
Neighbourhood	People Friends & Family Quietness Safe	<p>“Family lives close” (BEN53)</p> <p>“I feel save in my community.” (BEN64)</p> <p>“Quiet, friendly people” (BEN65)</p> <p>“Good neighbours, community spirit but people keep themselves to themselves” (BEN65)</p> <p>“Tidy village” (BEN66)</p> <p>“Quiet area” (BEN67)</p>	<p>Having family and friends close by was extremely important for a number of residents.</p> <p>The type of neighbourhood in which people lives also has a big impact on how they view their community. Most prefer quiet, friendly and welcoming communities and Bentley appears to provide that.</p>

		<p>“Friendly people” (BEN67)</p> <p>“Quiet” (BEN79)</p> <p>“Friendly environment” (BEN80)</p> <p>“Such a difference in the community, it feels more neighbourly.” (BEN83)</p> <p>“Vibrant community. Neighbours are friendly” (BEN84)</p>	
Community Spirit	Together Closeness of People	<p>“Community spirit” (BEN53)</p> <p>“It is a way to combat loneliness and gives people opportunities to meet people” (BEN53)</p> <p>“Very friendly, people get on with people.” (BEN60)</p> <p>“Lots of opportunities to volunteer and play a part in community” (BEN61)</p> <p>“To see how everybody comes together for one another, when I reach out for support there is always somebody with a listening ear.” (BEN64)</p> <p>“Community spirit feels high and there really are people who care” (BEN64)</p> <p>“Close together, everyone helps when needed” (BEN74)</p> <p>“The sense of community, everyone gets on” (BEN77)</p> <p>“Good sense of community” (BEN77)</p>	<p>The togetherness of the community is a positive factor of living in Bentley. People are at the centre of such good community spirit.</p>

		<p>“Sense of community” (BEN80)</p> <p>“Close community” (BEN82)</p> <p>“When we do clean ups and litter picks children now help clean up.” (BEN83)</p> <p>“A couple who used to sit drinking and dropping their cans have now offered to help clean up and been gardening.” (BEN83)</p> <p>“People don't always come when the weather is cold but came for coronation and brought more families and friends, proper community feel.” (BEN 83)</p>	
--	--	--	--

Wellbeing	Support Network Good physical & mental health	<p>“Children have safe places to go” (BEN53)</p> <p>“As long as I am healthy and happy for my kids” (BEN53)</p> <p>“Having the ability to live a long and healthy life as best I can” (BEN55)</p> <p>“Easy access to GP services. Respect between you and the GP service.” (BEN56)</p> <p>“Makes quality of life better” (BEN57)</p> <p>“Good health care provisions” (BEN58)</p> <p>“Mobility is important.” (BEN59)</p> <p>“Means people speak to you and is good for mental health” (BEN60)</p> <p>“It creates an atmosphere of happiness” (BEN61)</p> <p>“Mental health. Winter months are a struggle. Summer is a big positive” (BEN 62)</p> <p>“Want to live in good neighbourhood away from trouble” (BEN 65)</p> <p>“I want to feel supported and be in touch with right people if I am unwell. I think a tidy village is important for wellbeing.” (BEN66)</p> <p>“Healthy enough to be able to work. For the family as well &amp; whatever I want to do</p>	<p>What is important for people’s wellbeing – Most suggested living long and health was the most important factor. When asked why, most suggested that being able to look after family, in particular, their children was the driving force behind this. Some suggested having good mental health was a determining factor in overall wellbeing and having a support network around them was what helped this.</p> <p>A few residents mentioned having good access to GP services made all the difference to their overall wellbeing.</p>
-----------	--	---	---

		<p>and need to do.” (BEN70)</p> <p>“Being around for my kids” (BEN73)</p> <p>“Good GP service” (BEN76)</p> <p>“Living long enough for my kids” (ben77)</p> <p>“Being able to look after my children” (BEN78)</p> <p>“Living a long healthy life” (BEN82)</p> <p>“Being social, living in a good neighbourhood where people speak to each other and work together to make lives better like activities for children.” (83)</p> <p>“I like .... and the Family hub services” (BEN102)</p>	
--	--	---	--

<p>Community Places of Interest</p>	<p>Green Spaces Schools Community centres Church</p>	<p>“Assets like Bentley Park are great” (BEN53)  “Plenty of infrastructure, children have lots of interests. Scout group” (BEN54)  “Shops and other amenities in a <b>close range...</b> Green spaces.” (BEN 56)  “Close to green spaces, good local shops, <b>bus services and train</b> good park, good choice of medical support and good schools” (BEN 57)  “Can <b>access</b> good quality food good shops” (BEN 57)  “Good shops, plenty of local amenities, green space, good health care provision” (BEN58)  “Local amenities like the pavilion. Green spaces and sports and activities” (BEN61)  “Good parks, community events such as fireworks, church” (BEN62)  “Renew 127, Bentley Park and pavilion, Church” (BEN63)  “Adwick swimming club... Used to use library haven’t been since it moved” (BEN65)  “Bentley Park and plenty of shops... Variety in shops” (BEN 66)</p>	<p>All residents were able to identify places of interest in their local community, suggesting Bentley to have a good amount of assets available for local people to use. Bentley Park was the main talking point for those that enjoyed the outdoors, having a space to walk and take children. Bentley Park is an asset that many residents suggested was a good part of their community. The park is at the centre of the community and is a place that is accessible by most residents. Bentley residents were also appreciative of the events that take place in the park and how the activities are free.</p>
-------------------------------------	--	--	---

		<p>“Bentley Park, close shops... Makes people stay in the area, shop local. Handy local schools.” (BEN 67)</p> <p>“As good as it can get. Close to shops. Close to schools and town.” (BEN70)</p> <p>“a lot of places to play football and parks for kids to play” (BEN72)</p> <p>“Plenty to do. Great parks” (BEN73)</p> <p>“Community Centre, my place” (BEN 75)</p> <p>“Park... Area to play and gets you out and active” (BEN 76)</p> <p>“Family hub, Bentley Park” (BEN80)</p> <p>“Bentley Park for kids” (BEN81)</p> <p>“Bentley Park” (BEN82)</p> <p>“Bentley Rugby Club” (BEN83)</p> <p>“Nice Park, I use the local shops, <b>I live close to the</b> Town End Community Hub” (BEN84)</p> <p>“I like the Park” (BEN102)</p>	
--	--	---	--



<p>Community Activities</p>	<p>Church Peer support groups Sports clubs</p>	<p>“The knitting group at the homestead has allowed me to get in contact with more residents... Having a community group to go to is important as it allows me to get out and speak with people who have similar interests and to also speak to more ladies.” (BEN55)  “Sit fit classes and other physical activities.” (BEN 56)  “The fibromyalgia group is a good thing.” (BEN 59)  “Renew 127 allows me to get out and speak to people” (BEN 60)  “Community events such as fireworks,” (BEN62)  “Church activities” (BEN63)  “I use the TPT for walks and like being out in nature.” (BEN64)  “Play recreational football to keep moving and have a laugh” (BEN65)  “I have a dog to walk.” (BEN 66)  “Friday social stroll, craft group on Thursday” ... it allows you to speak to people and combats loneliness (BEN 68)    “Children play rounders (using equipment funded by ACG in 2020) and</p>	<p>There are a number of activities and social events that appear to make the biggest difference to Bentley residents' lives. Most suggested that this made the biggest difference to ensuring they did not feel isolated and had good mental health.  There was a mixture of activities, but a high percentage suggested they liked to have walks on their doorstep and access to exercise or keep fit sessions.</p>
-----------------------------	--	---	---

		<p>football on a weekend together even though they go to different schools.” (BEN83)</p> <p>“The church to set up a new coffee morning and provide chance for different ethnicities to mix together because Town End is a diverse community.” (BEN 83)</p> <p>“I like .... and the Family hub services” (BEN102)</p>	
Accessibility	<p>Transport</p> <p>Walking distance</p> <p>Easy Access</p>	<p>“It is important to me that I can access services in Doncaster and in particular, in Bentley” (BEN 55)</p> <p>“Shops and other amenities in a close range.” (BEN56)</p> <p>“It is important that people can access things.” (BEN56)</p> <p>“Bus services and train...makes better quality of life That you can access good quality food good shops” (BEN 57)</p>	<p>Most things appeared close enough for residents to enjoy things on their doorstep.</p> <p>A lot enjoyed the close proximity to the town centre. Many did not have access to a car and walking was their main form of transport, so having things as close as possible was definitely high on the agenda. All suggested Bentley was able to offer this, and they were pleased with the day-to-day necessities and access to these.</p>

		<p>“Close to work” (BEN65)</p> <p>“Need to live close to work and shops, drive but prefers not to need to go too far” (BEN65)</p> <p>“I don't drive. Easy to get to town. Getting to work. Convenience. Public transport. Like walking.” (BEN 70)</p> <p>“Close to town, plenty to do” (BEN73)</p> <p>“Easy travel and good for the kids, ease of access” (BEN74)</p> <p>“I am really close to town, I am close by to the gym, everything is on my doorstep... Everything is within walking distance and easy to get to.” (BEN75)</p>	
--	--	---	--

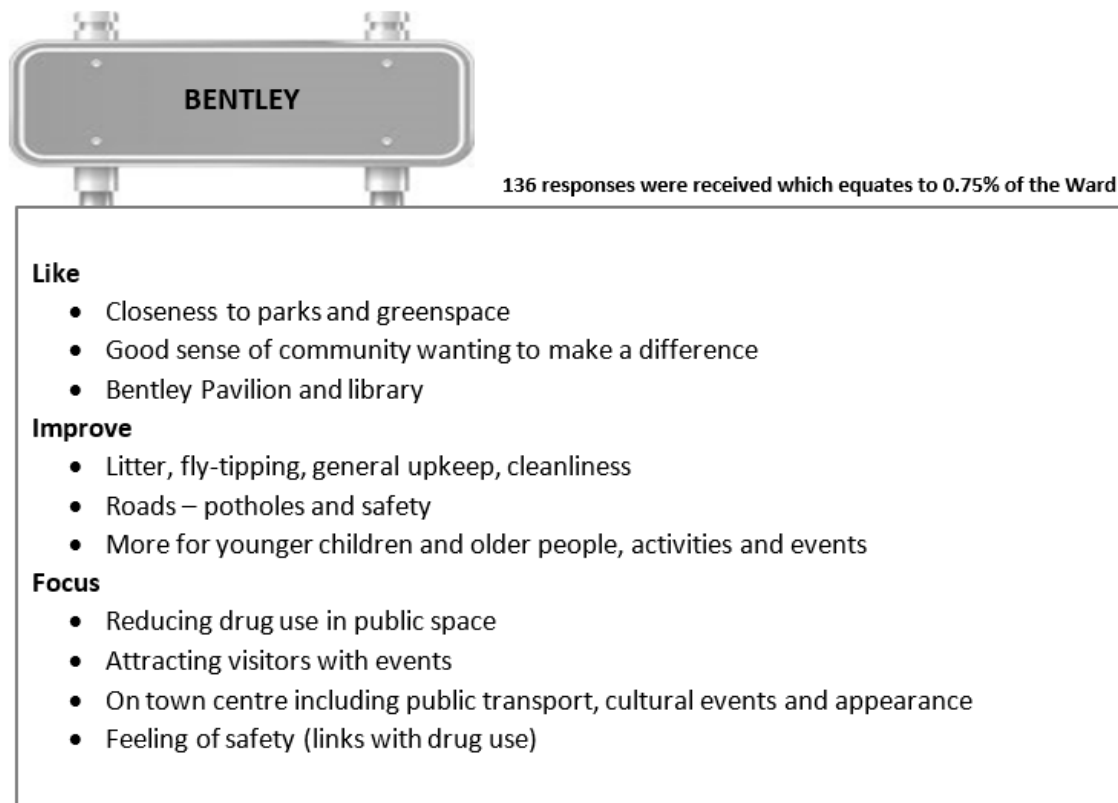
2022			
Themes	Sub Themes	Quotes	Commentary
Assets (People & Community Spirit)	<ul style="list-style-type: none"> <li>• Family</li> <li>• Neighbours</li> <li>• Community spirit</li> <li>• Friends</li> </ul>	<p>“People are nice, feels safe” (BE37)</p> <p>“Good neighbours and family helping each other. Jet Club a good place for people.” (BE39)</p> <p>“Been here all my life, shops here, family and friends.” (BE72)</p>	<p>Lots of the residents said close the community was, and how they liked living in Bentley due to this and also the great location and amenities.</p> <p>Many residents have lived and</p>

		<p>“Community is good, feels safe.” (BE71)</p> <p>“Social events” (BE44)</p> <p>“It has changed over time for the better. People in Doncaster are really nice and there is community spirit in Bentley. I like the area.” (BE1)</p>	<p>worked in and around Bentley for most of their lives and are proud to be raising families there.</p> <p>Local community voluntary groups, library and other sessions are run regularly in Bentley and there are lots of community groups and sports clubs in the area.</p>
<p>Assets (Community Buildings &amp; Amenities)</p>	<ul style="list-style-type: none"> <li>• Library</li> <li>• High Street</li> <li>• Bentley Pavilion</li> <li>• Schools</li> <li>• My Place</li> <li>• Family Hub</li> </ul>	<p>“Friendly town, good shops and good parks for walking” (BE18)</p> <p>“Got all shops you need, 5 min from town.” (BE21)</p> <p>“I know everyone here, everything you need is here doctors, chemist, shops, and good bus service.” (BE73)</p> <p>“Bentley has a good park, good school and shops.” (BE75)</p> <p>“Church does lots of good for people struggling.” (BE61)</p> <p>““Good footfall for the cafe business, a lot of elderly/older people visit us and meet with their friends for a coffee. Good links with bus service and hairdressers, people usually visit our cafe after their shopping or hair appointments. (Cafe situated next to local amenities) ” (BE22)</p>	<p>Residents commented on how they were fortunate to have so many local community assets such as the library, pavilion, shops, My Place and family hub to name just a few.</p> <p>Bus routes and their geographical location was mentioned, and they felt well connected to Doncaster and other surrounding villages.</p>

<p>Green spaces</p>	<ul style="list-style-type: none"> <li>• Bentley Park</li> <li>• Bentley Community Woodland</li> <li>• Play Areas</li> </ul>	<p>“Good location, enjoy going to Millgate WMC, and Bentley Park. Good walking area for dog” (BE14)</p> <p>“Good walking places for the dog.” (BE15)</p> <p>“Friendly town, good shops and good parks for walking” (BE18)</p> <p>“Surrounded by green fields, trans Pennine trail, Bentley community woodlands, Bentley Park.” (BE49)</p> <p>“Bentley Park kids enjoy.”(BE65)</p> <p>“Park is good and improved, everything is in the looks great.” (BE79)</p>	<p>Many residents said how they liked to have lots of green spaces and parks on their doorstep for walking dogs, and general recreation.</p> <p>The recent development of Bentley Park, TPT and the Community Woodland areas were also mentioned and people felt lucky to have these unique green spaces and the play equipment and facilities on them.</p> <p>The Pit and Mining heritage was spoken about a lot and how the village has developed since it closed.</p>
---------------------	--	--	--

## Doncaster Talks

In 2019, Doncaster Talks undertook insight across the borough. Responses were separated into wards and thematically analysed. Across Bentley, 136 responses were recorded and the main themes on what people liked about the area, what could be improved, and what the borough should focus on are displayed in the table below:



## Locality Plan

Team Doncaster has developed locality plans to look at how we can work together to strengthen communities and improve the lives and opportunities for the residents living there. This plan has been put together with more input and engagement from those living and working in the North locality. Communities have told shared exactly what they want to see change and improve in the areas where they live, and this insight has enabled a workable plan to deliver in conjunction with our communities and partners.



For more information on the North Locality plans, please visit [North Locality Plan 2023 - Draft Version.pdf \(windows.net\)](#)



## Community Investment

Table 6. Community Investment across North Locality (Doncaster Council, 2023)

Ward	Total Amount by Ward	Funding Type	Total Amount by Locality
<b>Norton &amp; Askern</b>	£104,900.00	VCFS, Ward Members, Barrier Buster, Community Booster, Active Communities Grant, Community Wealth Builder Support (X4), Locality Commissioning, Holiday Activity Fund, LSCIF Round Two, Community Investment Fund, Community Wealth Builder Grants, Dragon's Den, Ward Members	£804,160.00
<b>Adwick Le Street &amp; Carcroft</b>	£93,710.00		
<b>Sprotbrough &amp; Cusworth</b>	£104,840.00		
<b>Roman Ridge</b>	£45,810.00		
<b>Bentley</b>	£454,900.00		

In the North locality, the sum of investment in community organisations was £804,160.00 as of November 2023 (Power BI, 2023). The main source of grants has been 'Community Wealth Builder Support', followed by 'VCFS Fund and 'Active Communities Grant'.

The top priority for investment in the North was to 'enable positive lifestyle choices including weight management, smoking cessation, physical activity, drug and alcohol misuse', followed by 'children and young people provision', 'support physical activity', and 'community spirit'.

In the Bentley ward, investment totalled £454,900.00 as of November 2023. In total, 22 community organisations have received funding including Bentley Baptist Church and North Doncaster Development Trust. The top priority for investment in the Bentley ward was 'enable positive lifestyle choices including weight management, smoking cessation, physical activity, drug and alcohol misuse'.



## Appendix

### Well Doncaster Annual reports

Well Doncaster Approach: <https://youtu.be/e1RKOZoGI10>

More information about how Well Doncaster has been meeting outcomes and objectives can be found in past and present annual report:

<https://welldoncaster.wordpress.com>

### Census data 2021

The census is undertaken by the Office for National Statistics every 10 years and gives us a picture of all the people and households in England and Wales.

[Build a custom area profile - Census 2021, ONS](#)

[Census Maps - Census 2021 data interactive, ONS](#)

### Public health Data

#### Public Health Data

##### Fingertips

This is a new fingertips profile that uses data from Local Health an existing PHE data tool. Local Health is a collection of quality assured health information presented for small geographical areas. By presenting data for small areas, Local Health provides evidence of inequalities within local areas. It supports targeted interventions to reduce such inequalities.

Local Health contains indicators related to:

- Population and demographic factors
- Wider determinants of health
- Health outcomes

It presents data for middle super output areas (MSOA), electoral wards, clinical commissioning groups (CCG), local authorities, and England as a whole.

Please note, as the Local Health tool was designed to allow users to map small area data, a mapping option has not been provided in this profile.

<https://fingertips.phe.org.uk/profile/local-health/data#page/0>

[Local Health - Public Health England - Reports: get a dashboard on a custom area](#)

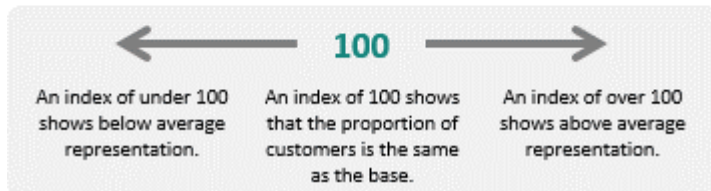
#### Acorn profiles

Wellbeing Acorn segments the population into 4 groups (Health Challenges; At Risk; Caution; Healthy) and 25 types describing the health and wellbeing attributes of each postcode across the country. By analysing significant social and health related behaviour, it provides precise information and an in depth understanding of upstream issues affected by current lifestyle traits

## INTERPRETING THE REPORT

The Wellbeing Acorn profile report helps you understand the underlying demographics, lifestyle and health attributes of your customers and service users by comparing their Wellbeing Acorn profile to a base (e.g. UK population, area or other customer groups).

### INDEX



The Wellbeing Acorn Profile contains 12 variables that are indicators of Disability or Infirmary in the population and 9 variables related to unhealthy Behaviours. The average score measured against the base profile of Yorkshire and the Humber is 100. A value above 100 indicates that the area population is overrepresented for this characteristic, below 100 the value is less than the average or underrepresented.

Get Doncaster Moving survey

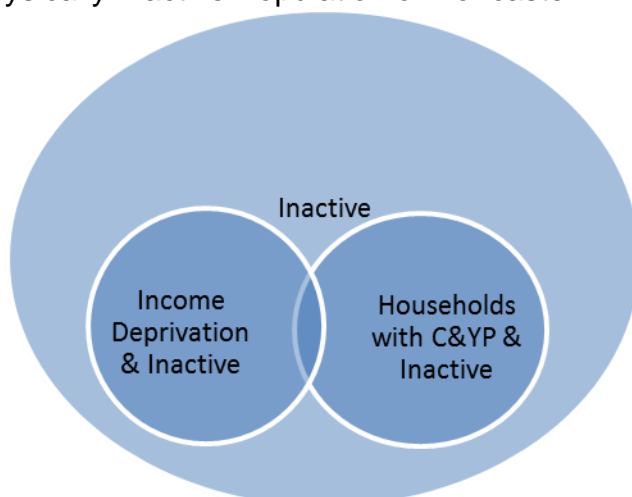
<https://getdoncastermoving.org/uploads/behavioural-insight-phase-one-summary-report.pdf?v=1644581925>

### Mosaic data

Mosaic Public Sector classifies the UK population into one of 66 types and 15 groups through a detailed and accurate understanding of each citizen's demographics, lifestyles, behaviours and location.

The Physically Inactive Population of Doncaster

The Physically Inactive Population of Doncaster



The MOSAIC types who “Do not exercise” and “Do not take part in Sport” were searched and three priority groups have been identified through work with strategic partners as part of the development of Doncaster’s Physical Activity Strategy. The three priority groups are:

- The Inactive
- Families with children and young people
- People living in income deprivation

These groups are cross-referenced against the inactivity list allowing for the identification of MOSAIC types which are both likely to be inactive and living in deprivation as well as inactive and from households with children and young people. Link to the Get Doncaster Moving strategy; [Let's Get Moving! | Get Doncaster Moving](#)

### Pupil Lifestyle Survey 2022

[Pupil Lifestyle Survey - Healthy Schools \(healthylearningdoncaster.co.uk\)](http://healthylearningdoncaster.co.uk)

### Power BI – Joint Strategic Needs Assessment

The Joint Strategic Needs Assessment (JSNA) is a process that identifies the current and future health and wellbeing needs of a local population. The dashboards show information about the employment, health, and wellbeing of people in Doncaster. We use this information to inform our policies and strategies to improve the lives of everyone in the Doncaster area.

[Joint Strategic Needs Assessments - Team Doncaster](#)

