

Highfields Community Profile Well Doncaster



Well Doncaster

Community Led Health and Wealth

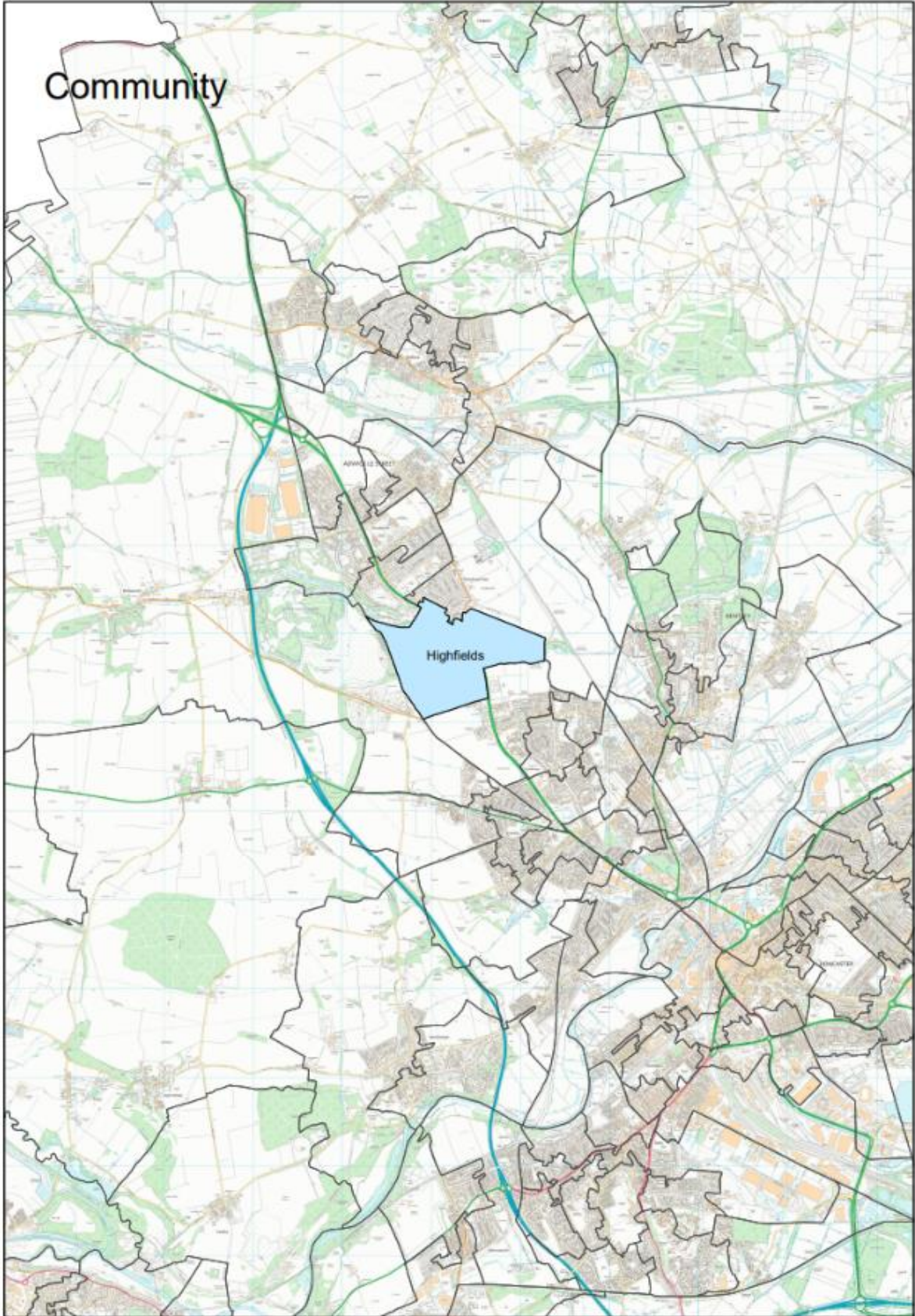
Empowering people in Doncaster to live better, healthier, and happier lives.

www.welldoncaster.uk

Well Doncaster
**Community
Wealth Builder**

Well Doncaster
Be Well

 **City of
Doncaster
Council**



Contents	
This report.....	5
One Page Summary.....	7
Key Health Priorities	7
Assets	8
Asset Maps	8
Assets in the Community	10
Population Health Management.....	10
Ward Members	13
Health and Wealth.....	14
Deprivation.....	14
Wealth Inequalities.....	15
Fuel Poverty.....	15
Food Poverty	16
Employment.....	16
Citizens Advice Doncaster Borough (CADB)	18
Childhood Development.....	19
Education.....	21
Health Inequalities	21
Long Term Health Conditions	21
Alcohol.....	22
Life Expectancy	23
Causes of Death.....	23
Smoking.....	23
Loneliness and isolation	24
Physical Activity	26
Active Travel	27
Population.....	27
Population size	27
Age Profile	28
Ethnicity and Language	28
Housing.....	29
Anti-Social Behaviour.....	29
Vulnerable Victims	30

Community Insight.....	31
Appreciative Inquiry	31
Doncaster Talks	33
Locality Plans.....	34
Community Investment	35
Appendix	36
Well Doncaster Annual reports	36
Census data 2021	36
Public Health Data	36
Acorn profiles	36
Get Doncaster Moving survey.....	37
Mosaic data.....	37
Pupil Lifestyle Survey 2022.....	38
Power BI – Joint Strategic Needs Assessment.....	38

This report

This report focuses on Highfields community, part of the Adwick and Cacroft ward in the North of Doncaster. Where specific data for areas are unavailable, data for the ward has been presented.

The report begins with a one-page summary outlining key information and priorities about Highfields. The document builds on the initial community profile of Highfields 2021 and updated figures have been included where possible. This report shows the initial conversations with communities, including ward members, community organisations, faith groups, residents and other organisations who work in the area. Communities' knowledge of their own areas enables them to identify their strengths and the assets on which they can build on. This document is shared with the intention of supporting those conversations and sharing information that might not be readily available to local people.



Highfields



31.5% of children are living in **poverty**



53.5% live in households with an income of **less than £20k**



Respiratory Diseases are the leading cause of deaths



34.1% of older residents **live alone**



42% of year 6 children are **overweight**



49.4% of residents are **inactive**

One Page Summary

Adwick Le Street and Carcroft ward is located in the North locality of Doncaster and comprises of four smaller communities: Adwick Le Street, Carcroft, Highfields and Woodlands and part of Skellow. As a ward, levels of deprivation are high, but deprivation does differ between communities. Older people living in poverty is an area of concern for the ward. A large proportion of the ward population are not in employment and are economically inactive, a considerably greater proportion of the population than Doncaster and England. The ward does not appear very diverse in ethnicity and languages spoken with the majority of residents identifying as 'white' and reporting their first language as English.

Highfields has significantly higher levels of deprivation than the rest of the ward. Levels of deprivation can be seen in the large proportion of child poverty and older people living in poverty. Highfields has high unemployment rates compared to Doncaster and England and comparatively worse long term unemployment rates, which may be an influencing factor in levels of deprivation. There are higher proportions of residents with no qualifications, and fewer residents who hold a level 4 qualification or above.

The mortality rate of people with respiratory diseases in Highfields is the second highest in Doncaster and is significantly higher than the rest of the city. The prevalence of all cancers is significantly higher in Adwick and Carcroft than the rest of Doncaster. Rates of lung cancer are a real cause for concern.

Chronic Obstructive Pulmonary Disease (COPD), myocardial infarction (heart attack) and strokes are the leading causes of emergency hospital admissions in adults. This indicates poor levels of self-management and health literacy.

Childhood obesity levels are high amongst year 6 children. Whilst the highest rate of children experiencing smoking in the home and car can be found in Adwick and Carcroft ward.

Key Health Priorities

- Levels of unemployment, low levels of qualifications and professional occupations.
- Poor healthy life expectancy - it would be important to consider lifestyle factors, such as smoking as risk factors
- Inactive deprived households with children and young people alongside high levels of childhood and adult obesity.
- High levels of emergency admissions to hospital for heart health including, Stroke, Myocardial Infarction, COPD & Coronary Heart Disease.

Assets

Well Doncaster uses a community centred approach which supports investment in supporting, working with, and empowering communities to facilitate a healthy community. The voice and role of our communities and taking a strength/assets based approach to work with individuals, families and communities is crucial to the achievement of our overall vision.

Asset Maps

The Adwick and Carcroft ward is split into four distinct communities, Carcroft, Adwick, Woodlands and Highfields, each having its own assets. It is appreciated that these maps are a starting point in understanding the communities and that further work is needed amongst the community to further understand all the assets and how they are used.

The maps below outline the ward boundaries and show different types of assets across the Adwick and Carcroft ward. Work is ongoing in the community to flesh out the understanding of the area and how and what is accessed by whom. Each community/ward has its own identity and this needs to be understood to respond appropriately and effectively to community need. Carcroft, alongside Woodlands and Highfields, remains a priority area for North Doncaster and work will be undertaken in the coming months to establish this.

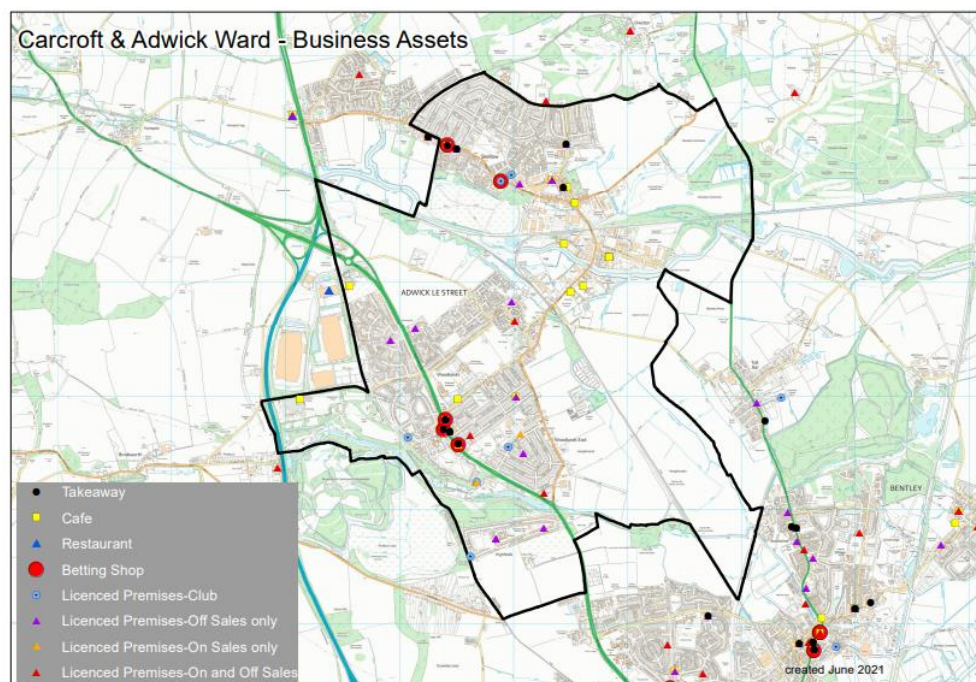


Figure 1. Carcroft and Adwick Business Assets (Doncaster Council, 2021)

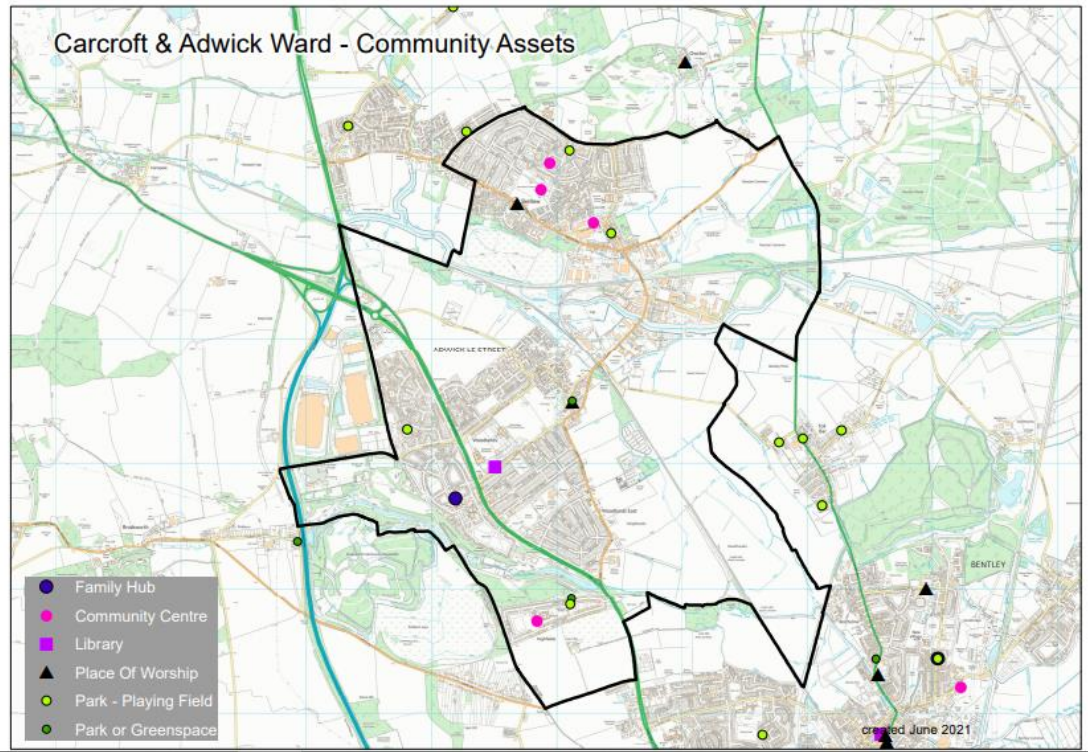


Figure 2. Carcroft and Adwick Community Assets (Doncaster Council, 2021)

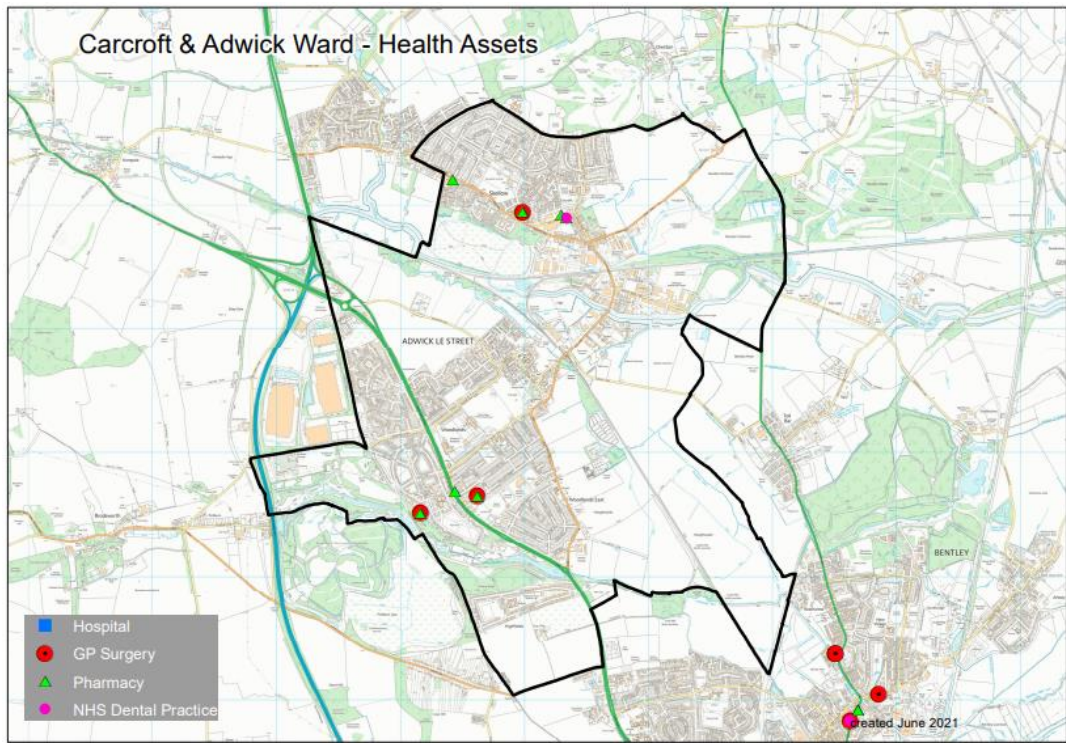


Figure 3. Carcroft and Adwick Business Assets (Doncaster Council, 2021)

Assets in the Community

Population Health Management

It is vital to understand the effect and direction the pandemic and cost of living crisis is having on community organisations in the ward so that appropriate and targeted support can be offered, and work can be implemented to manage any gaps or risks associated with changes. To support the former, Well Doncaster officers undertake regular population health management insight with community organisations in Highfields, identifying their current status and needs, and work with each group and partners to meet their goals. This is a living document and will be updated and adapted as needs are met and change. If you would like more detail on this, please contact welldoncaster@doncaster.gov.uk

As part of a population health management approach, the following assets have been identified and themed around place and people:



Institutions (Schools/colleges etc.)	Physical space (Parks, carparks etc.)	Local Economy (Local profit Businesses)
<p>Education:</p> <ul style="list-style-type: none"> Highfields Primary Academy Don Valley Academy, Scawthorpe Outwood Academy, Adwick Doncaster College (The Hub) <p>Other:</p> <ul style="list-style-type: none"> Highfields Family Hub (activities based at Highfields Primary) Highfields Community Centre Scribbles child minders (Petra Miles) 	<p>Parks:</p> <ul style="list-style-type: none"> Highfields Playground Highfields Playing Fields Market Street Highfields BMX Track (located within Highfields Country Park) Roman Ridge Cycle Path (Located to the rear of Coppice Road) Highfields Lakes and Country Park - The site includes a range of open spaces typologies; including natural space, public park, formal sports 	<p>Shops:</p> <ul style="list-style-type: none"> Highfields General Store Highfields Store Ltd AND Post Office Residents of Highfields are in close proximity to Woodlands Shops (Great North Road, Woodlands) and Scawthorpe Shops. (Crossland Way)

	provision (bowling green) and allotments Other: <ul style="list-style-type: none"> • Doncaster North Park & Ride • Brodsworth Farmland & Barns • Brodsworth Pit Top 	
--	---	--



INDIVIDUALS (Key Individuals within the community and why)	ASSOCIATIONS Local Groups/Clubs	STORIES (Good news stories)
<ul style="list-style-type: none"> • Ward Members: Debbie Hutchinson, Sarah Smith & John Mounsey • Community Members: (Trustees of Highfields Community Partnership) • Foodbanks- All Saints & Lifeline against the Breadline that serve Highfields. • Highfields Primary Academy parent teacher association members 	<p>Support:</p> <ul style="list-style-type: none"> • All Saints Food Bank (Woodlands) • Highfields Community Centre • Highfields Community Partnership • Highfields Family Hub Outreach <p>Physical Activity/Sports:</p> <ul style="list-style-type: none"> • Highfields Amateur Boxing Club <p>Other:</p> <ul style="list-style-type: none"> • Music Groups Tuesday & Friday (Community Centre) • Highfield's Over 60s Group 	<ul style="list-style-type: none"> • Highfields is a former coal mining village • Highfields was built so that most houses either overlooked farmland or woodland, the ornamental Highfields Lake, or the greens in the centre of the village. Like its neighbour, Woodlands, Highfields lies between the historic Great North Road and the Roman ridge • Highfields Boxing Club has seen many professional boxers develop out of its centre, it is well established and

<ul style="list-style-type: none"> • Friends of Highfields Academy (Facebook group) <p>Professionals:</p> <ul style="list-style-type: none"> • Stronger Communities Officer Paula Williams • Family Hub outreach staff • St Leger Homes Officer • Primary School Head Teacher Ben Williams • PCSO's • Social Prescribers • Well Doncaster • Localities Team 	<ul style="list-style-type: none"> • Growing Friends Family Hub Outreach (Highfields Primary Academy) 	<p>produces local and national talent.</p> <ul style="list-style-type: none"> • Highfields Community Partnership are working to secure funding for new community music sessions, including the introduction of youth sessions.
--	--	---



Ward Members

The Adwick and Carcroft ward has three ward members who were elected in 2021.

Adwick and Carcroft



Councillor Debbie
Hutchinson

Adwick and
Carcroft
Labour



Councillor John
Mounsey

Adwick and
Carcroft
Labour



Councillor Sarah
Smith

Adwick and
Carcroft
Labour



Health and Wealth

Health inequalities are avoidable differences across the population, and between different groups within society. Health inequalities arise from the conditions in which we live, work and play. These conditions influence our opportunities for good health, how we think, feel and act, therefore shaping our health and wellbeing.

Deprivation

Evidence shows that people living in our most deprived areas face the worse health inequalities in relation to health access, experiences, and outcomes. Deprivation covers a range of issues and refers to unmet needs caused by a lack of resources, including but not limited to finances, housing, and education. It is measured in different ways including the Indices of Multiple Deprivation (IMD). The IMD measures relative levels of deprivation in small areas, called LSOA. Adwick and Carcroft has an Index of Multiple Deprivation Score (IMD) of 41.5. Highfields LSOA has an IMD of 59.5 significantly higher than Doncaster' 30.3.

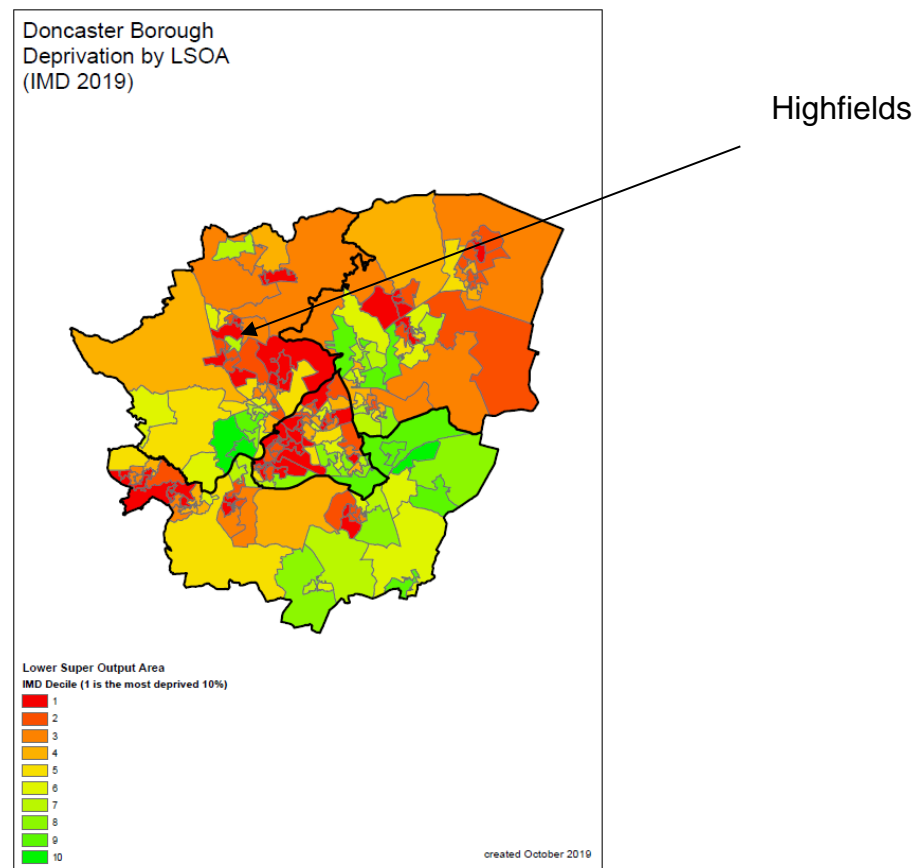


Figure 4. City of Doncaster deprivation by Lower Super Output Area (LSOA)

The 2021 Census data has produced estimates that classify households in England and Wales by four dimensions of deprivation: employment, education, health and disability and household overcrowding. This has been broken down to Highfields specifically and 32.2% of households are not deprived in any dimension, significantly lower than figures for Doncaster (43.7%) and England (48.4%). Furthermore 8.5% of households are deprived in 3 or more dimensions, significantly higher than Doncaster

(4.6%) and England (3.7%). Highfields is made up of only one LSOA and holds the lowest IMD decile and is in the top 20 most deprived communities in Doncaster.

Wealth Inequalities

Across the Adwick and Carcroft ward, 23% of residents experience deprivation associated with their income. This is significantly higher than Doncaster (16.6%) and England (12.9%). Around 31.5% of children in Adwick and Carcroft are living in poverty compared to 22.7% in Doncaster and 17.1% across England. Also, 21.4% of older people in are living in deprivation which is significantly higher than the rest of Doncaster (15.9%) and England (14.2%).

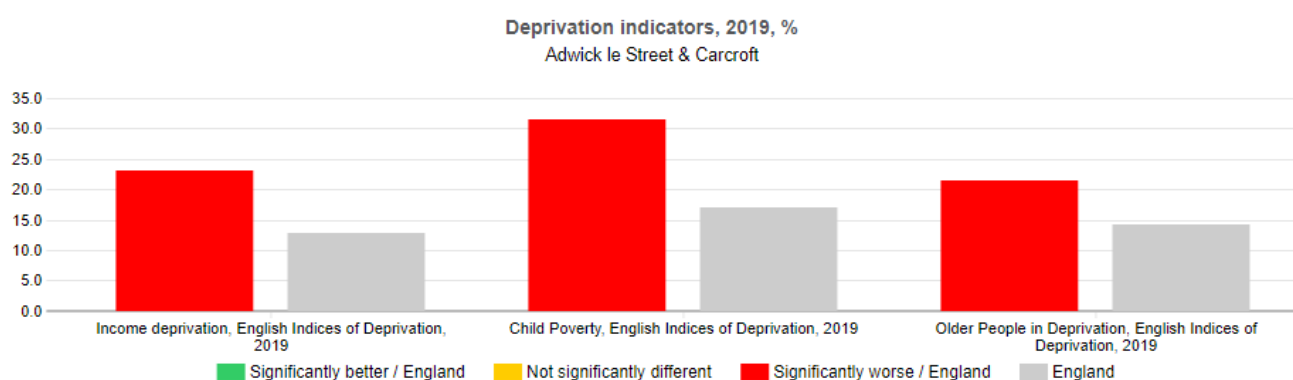


Figure 5. Deprivation indicators in Adwick and Carcroft compared to England (Public Health England, 2019)

Fuel Poverty

Table 1. Rates of Fuel Poverty at LSOA level in Adwick Le Street & Carcroft (Office of National Statistics, 2022)

LSOA Code	LSOA Name	Community Name	Number of households	Number of households in fuel poverty	Proportion of households fuel poor (%)
E01007464	Doncaster 009A	Woodlands Central	623	126	20.2
E01007465	Doncaster 009B	Woodlands Redhouse Interchange	777	111	14.3
E01007466	Doncaster 009C	Woodlands Crescent	795	187	23.5
E01007467	Doncaster 009D	Woodlands Park	664	154	23.2
E01007470	Doncaster 005C	Skellow Laurel Terrace	557	117	21
E01007471	Doncaster 009E	Adwick Le Street Mill Bridge	620	41	6.6
E01007472	Doncaster 005D	Carcroft West	621	131	21.1
E01007473	Doncaster 005E	Carcroft East	612	149	24.3
E01007474	Doncaster 005F	Carcroft South/Enterprise Park	632	155	24.5
E01007504	Doncaster 009F	Woodlands East	624	118	18.9

E01007507	Doncaster 009G	Highfields	498	153	30.7
-----------	----------------	------------	-----	-----	------

Many residents are also living in fuel poverty. Fuel poverty is defined as a household living on a lower income that is not deemed reasonable enough to warm a home sufficiently. According to fuel poverty by Parliamentary constituency, North Doncaster has the highest rates of fuel poverty (19.1%) in comparison to Don Valley (15.4%) and Central Doncaster (18.1%). In 2020, 25% of adults were unable to warm their homes to a reasonable standard in Adwick Le Street & Carcroft ward compared to Doncaster’s average (18.8%). This is the highest rate of fuel poverty in Doncaster. Rates across communities in the ward do differ. Data taken at LSAO level suggests residents living in fuel poverty is the highest in Highfields than any other area in the ward (table 1).

Food Poverty

There are 8 active foodbanks in the North locality of Doncaster. North Doncaster Development Trust provides the only foodbank for Carcroft residents, whilst Foresters Community Foodbank provides the only foodbank for Adwick. There are no known active foodbanks in Highfields community. Cost of Living Crisis, Low income, Benefit Changes, Debt and Benefit delays are the top 5 reasons for residents accessing support from foodbanks across Doncaster. Figure 5 shows demand for food support has increased since April 2022 across North of Doncaster. An average of 164 adults are supported by food parcels every month in North of Doncaster, whilst 97 children are supported by food parcels every month. It must be noted that this data does highlight where residents are accessing support, and therefore it is unknown where food poverty is more prevalent.

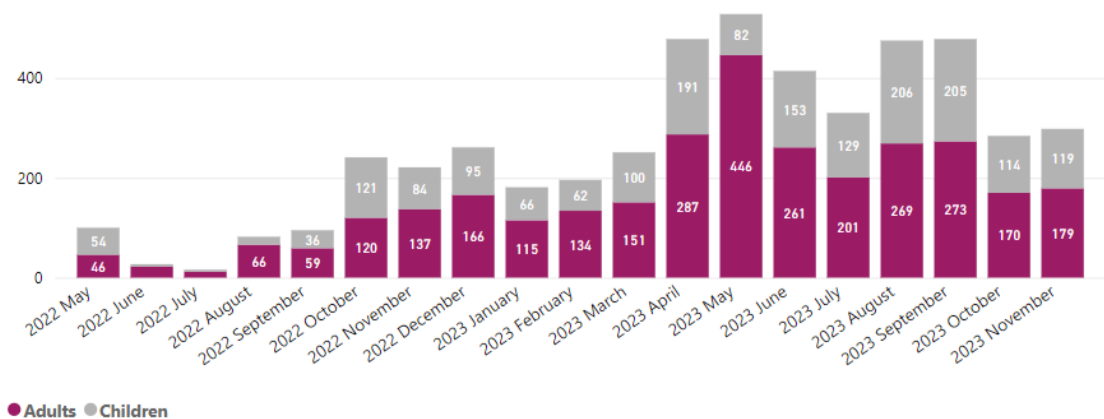


Figure 6. Number of Adults and Children accessing foodbanks in North of Doncaster (2023)

Employment

The largest proportion of residents who work are in full time employment >31hrs per week (71.9%), this is similar to Doncaster (70.2%). There is a higher proportion of unemployed residents in Highfields (6.8%) than Doncaster (6.1%) and England (5%). 5.25% of residents in the Adwick & Carcroft ward claim Universal Credit, which ranks as the 4th highest in Doncaster.

In addition, of those who do work there are a lower proportion of self-employed workers (6%) than the Doncaster. The 2021 Census shows that 45.4% of people over 16 in Highfields are economically inactive compared to 39.1% of England, i.e. people not in employment who have not been seeking work within the last 4 weeks and/or are unable to start work within the next 2 weeks. Furthermore, those who are economically inactive who have never worked (37.6%) is significantly higher than Doncaster (27.2%) and England (25.6%).

Those who classify as economically active and in employment in Highfields is 49.2%, lower than Doncaster (54.9%) and England (57.4%). A high proportion of individuals travel less than 10km to get to work (58%), when compared to Doncaster (41.7%) and England (35.4%) however a high number of individuals travel by car or van to work (59.8%) than Doncaster (57.9%) and less people walk to work (6.5%) than Doncaster (7.1%). Active Travel to and from work could be considered to improve physical activity levels in the community.

Residents in Highfields who have no qualifications (32.2%) is significantly higher than Doncaster (22.7%) and England (18.1%). Similarly, those who are qualified to level 4 and above (13.6%) is lower than Doncaster (22.7%) and England (33.9%). The highest proportion of people in Adwick and Woodlands are employed in elementary occupations (19.4%), which is higher than Doncaster (16.5%) and England (10.5%) and process, plant, and machine operatives (18.0%) is significantly higher than Doncaster (10.3%) and England (6.9%). Furthermore those employed in high skilled occupations such as managers directors and officials (5.9%) is significantly lower than Doncaster (10.2%) and England (12.9%) and professional occupations (5.2%) are also significantly lower than Doncaster (12.8%) and England (20.3%). This could be a consequence of the low levels of qualifications and would need to be considered when planning investment, skills and training and employment opportunities.

In Highfields a lower number of residents work 15 hours or less per week (5.4%) than Doncaster (8.2%) and England (10.3%) and a high number of residents provide 50 or more hours of unpaid care per week (5.1%) compared to Doncaster (3.4%) and England (2.6%) - an unpaid carer may look after, give help or support to anyone who has long-term physical or mental ill-health conditions, illness or problems related to old age. As illustrated in the charts below, 54% of Highfields residents live in households with an income of less than £20k. This is a significantly higher proportion than Doncaster which highlights the level of income deprivation in the community.

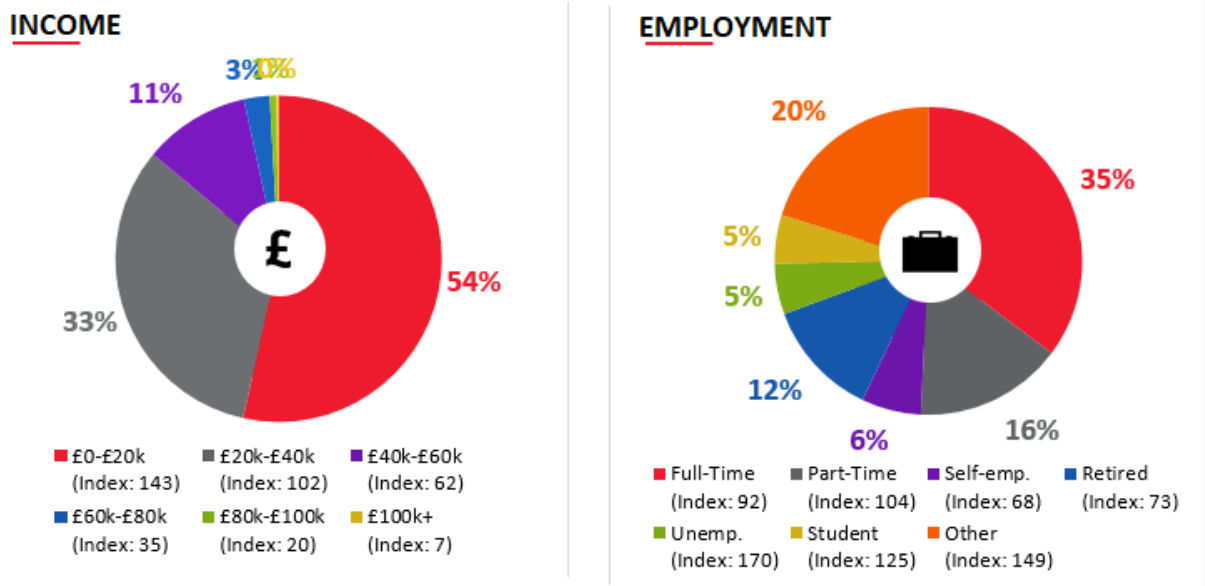


Figure 7. Household Income and Employment status of Highfields Residents (City of Doncaster Council, 2021)

Citizens Advice Doncaster Borough (CADB)

Citizens advice Doncaster Borough (CADB) are an independent charity and part of the Citizens Advice Network across England and Wales. They provide free, confidential and impartial advice and campaign on money, benefit, housing or employment issues affecting people’s lives. There are 154 residents living in Adwick Le Street and Carcroft currently accessing CADB. During the 2023/24 fiscal year, Adwick Le Street and Carcroft has the 2nd highest number of interactions with CADB in the North of Doncaster. Benefits and tax credits, debt, utilities and communications, benefits and universal credits and housing issues are the top 5 issues when seeking support.

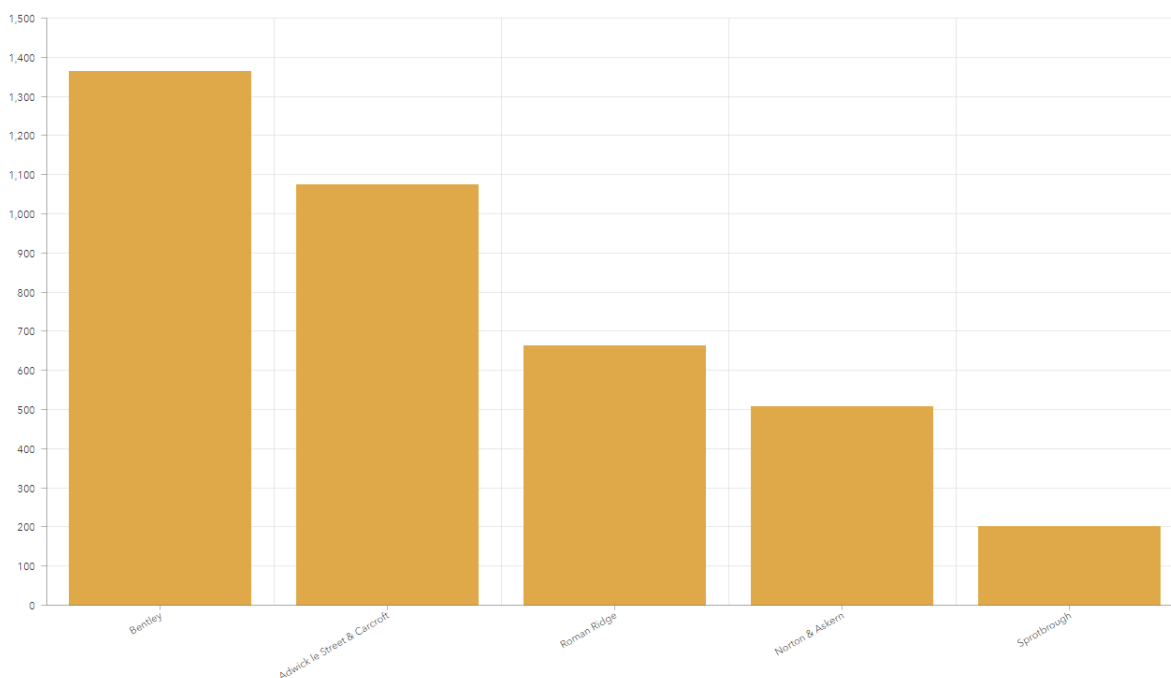


Figure 8. number of interactions with Citizens Advice Doncaster Borough (CADB) during fiscal year 2023/24

Childhood Development

In Adwick and Carcroft ward, 27.9% of children are obese or overweight at reception age which has increased from 25.9% in 2021. This is slightly higher than Doncaster (26.1%) and significantly higher than the average of England (22.6%). The prevalence of obesity including severe obesity at reception (11.6%) is slightly lower than Doncaster (12.2%) and higher, but not significantly different to England(9.9%). The prevalence of overweight or obese children increases to 42.6% in year 6, which is significantly higher than the average of Doncaster of 38.3% and the average of England 35.8%.

The rate of A&E admissions and emergency admissions in under 5s are both significantly lower in Adwick and Carcroft (104.0 per 1000) than England (140.7 per 1000). However, the rate of emergency hospital admissions for ages 15 to 24 are significantly higher in Adwick and Carcroft (175.1 per 1000) than figures reported for

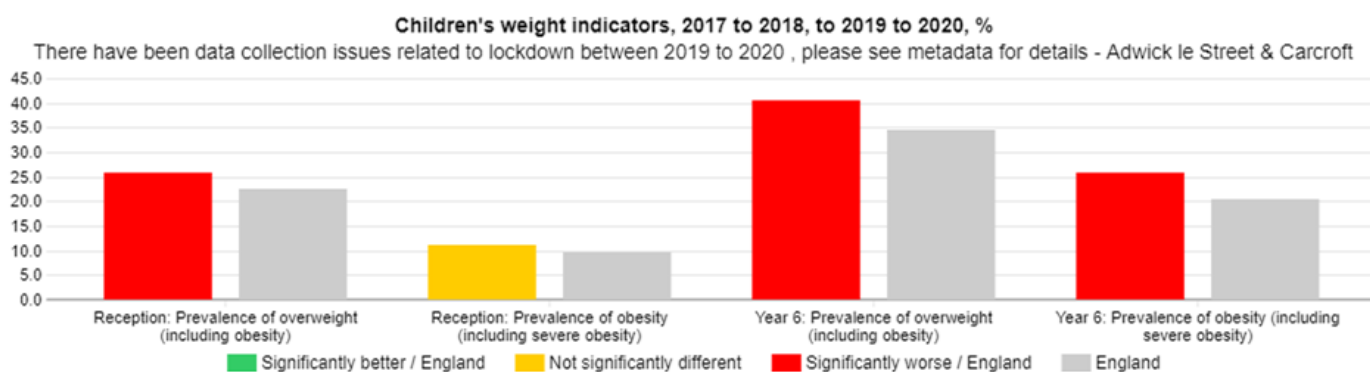


Figure 9. Prevalence of obesity and overweight children in Reception and Year 6 (National Child Measurement Programme, 2020)

England (127.9 per 1000) and slightly higher for Doncaster (161.6 per 1000).

The Pupil Lifestyle Survey is conducted by City of Doncaster Council to provide valuable data on children and young people's health-related behaviour, through an anonymous school-based questionnaire. Data from the survey has provided a set of Doncaster-wide figures at key points in children and young people's development; KS2, 3 and 4. This profile will compare the previous 2020 data with that collected most recently in 2022. In Adwick & Carcroft 133 pupils participated, 46 from year 4 and 87 from year 6. Highfields Primary Academy did not take part in the survey but it's likely some children from Highfields may attend other schools in the Adwick & Carcroft wards that did take part.

In 2020 the Pupil Lifestyle Survey showed that 73% of school-aged children in Adwick and Carcroft had breakfast, this was lower than the average of Doncaster (80%). This figure has increased significantly to 90% when reported in 2022 and is now higher than Doncaster (86%). The 2020 survey also indicated 17% of school-aged children in Adwick and Carcroft have free school meals. In 2022 this figure has significantly increased to 32% which is now higher than Doncaster (19%).

In 2020 fewer school-aged children in Adwick and Carcroft reported consumption of take-way food every day or most days (11%) in comparison to the figures reported for Doncaster (16%), however in 2022 this has increased to 20% whilst Doncaster's has decreased (15%). Similarly, a higher number of children have desert (44%) compared to Doncaster (32%). Although 98% reported undertaking physical activity in the last 7 days, only 12% reported they participate in physical activity via school clubs, which is lower than Doncaster (18%) and only 37% of children walk to school, which is also lower than Doncaster (47%). This supports the rise in childhood obesity seen in Adwick and Carcroft since the 2021.

12% of pupils in Adwick & Carcroft have Special Educational Needs, slightly higher than Doncaster (10%), however 74% of these receive extra help in school, which is significantly higher than Doncaster (48%) and is the highest in the borough.

In line with Doncaster, 97% reported they feel warm and comfortable at home and 92% felt able to clean themselves at home. 75% of children in Adwick and Carcroft felt able to have a restful night's sleep compared to 80% across Doncaster. No significant changes to what was previously reported in 2021.

46% of the children surveyed encountered smoking in the home – which is the highest in the borough and significantly higher than Doncaster (38%). Smoking indoors (17%) and as a passenger in a car (17%) was also higher than Doncaster (both 14%). Childhood exposure to smoking is the highest in the borough both in the home and in vehicles. Smoking prevalence at 15 years was modelled in 2014 and in Adwick and Carcroft, 5.4% of 15 year olds are likely to be regular smokers, lower than Doncaster (6.8%) and the same as England. Regular or occasional smoking at 15 was modelled at 7.8%, lower than Doncaster (8.9%) and England (8.2%). This data aligns to the high mortality levels and emergency hospital admissions associated with respiratory disease along with the high levels of smoking in Adwick & Carcroft.

It is important to note that the Pupil Lifestyle Survey is self-reported and was not completed by all the schools.

Education

At KS4, each pupil is given an Attainment 8 score (a score out of 90) based on their 8 best GCSE grades including English, maths and at least 3 other traditional academic GCSEs (sciences, languages, and humanities). Other qualifications at an equivalent level (e.g. BTECs) can also count towards the score. In 2022, average GCSE attainment scores per pupil (out of 90) was 36.1 in Highfields, the second lowest score in North of Doncaster and lower than both Doncaster (45.2) and England (48.8). In 2023, 57% of pupils achieved the expected standard in reading, writing, and mathematics at key stage 2, lower than the national average (60%).

Health Inequalities

Long Term Health Conditions

In the Adwick and Carcroft ward, the proportion of people who report having a limiting long term condition is 24% compared to 21.7% across Doncaster and 17.6% across England. The proportion of people in Highfields self-reporting as good or very good health is 75.5%, similar to Doncaster (77.4%) and lower than the figure reported for England (82.2%). Those self-reporting as having very bad health (2.2%), is higher than Doncaster (1.6%) and significantly higher than England (1.2%). Highfields has more people identifying with a disability (22.6%) than Doncaster (20.3%) and England (17.3%).

The prevalence of all cancers is higher in Adwick and Carcroft (112.2 per 1000) than Doncaster (106.5 per 1000), colorectal cancer (111.8 per 1000) than Doncaster (99.3 per 1000), prostate cancer (104.4 per 1000) than Doncaster (97.2 per 1000) and lung cancer (176.1 per 1000) which is significantly higher than Doncaster (137.1 per 1000). This could be linked to the high number of smokers in Highfields (27.1%) compared to Doncaster (19.6%). Similarly, the emergency hospital admissions in adults for COPD (175.7 per 1000) is significantly higher than Doncaster (124.2 per 1000) and emergency admissions for Myocardial Infarction (125.1 per 1000) and strokes (133.9 per 1000) is higher than Doncaster (115.9 per 1000) & (105.7 per 1000) respectively. This suggests there are significant challenges around self-management, health literacy and appropriate uses of health services.

The proportion of adults eating healthily is lower: 13% are likely to say that they never eat fruit and 49.4% never engage in moderate intensity physical activity. These risk factors may be contributing to the significantly higher levels of heart and circulatory disease in the ward, when compared with both Doncaster and England.

The infographic below shows the percentage of the population in Highfields with a diagnosis of different health conditions. The prevalence of all these health conditions is higher than borough rates. The significantly high level of emphysema, coupled with the significantly higher proportion of deaths from respiratory diseases, highlight the need to tackle the high rates of smoking in the community of Highfields and self-management.

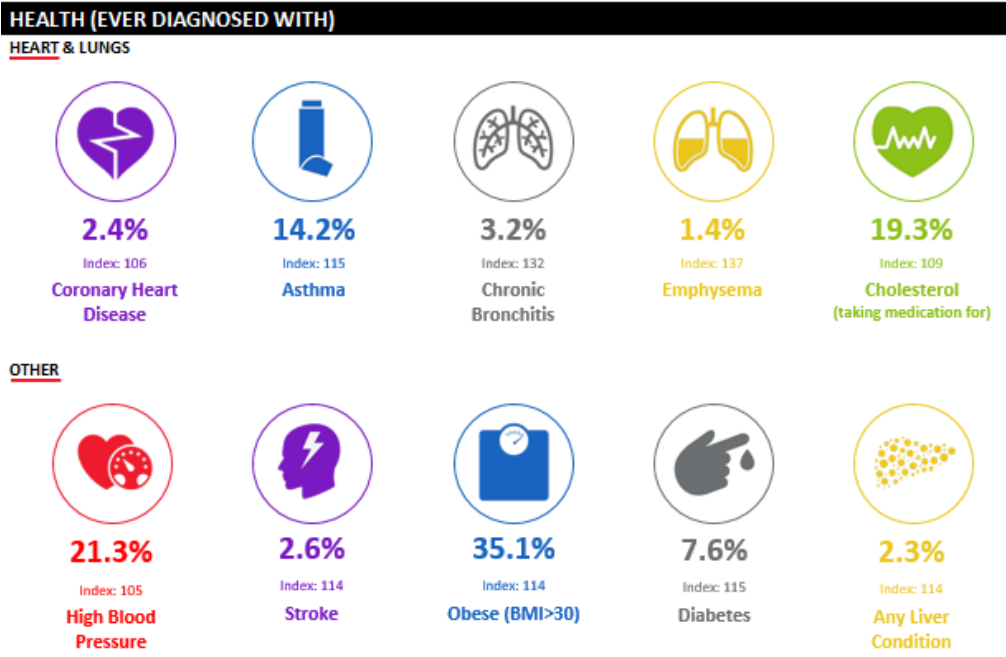


Figure 10. Prevalence of health conditions in Adwick and Carcroft ward (City of Doncaster Council, 2021)

Alcohol

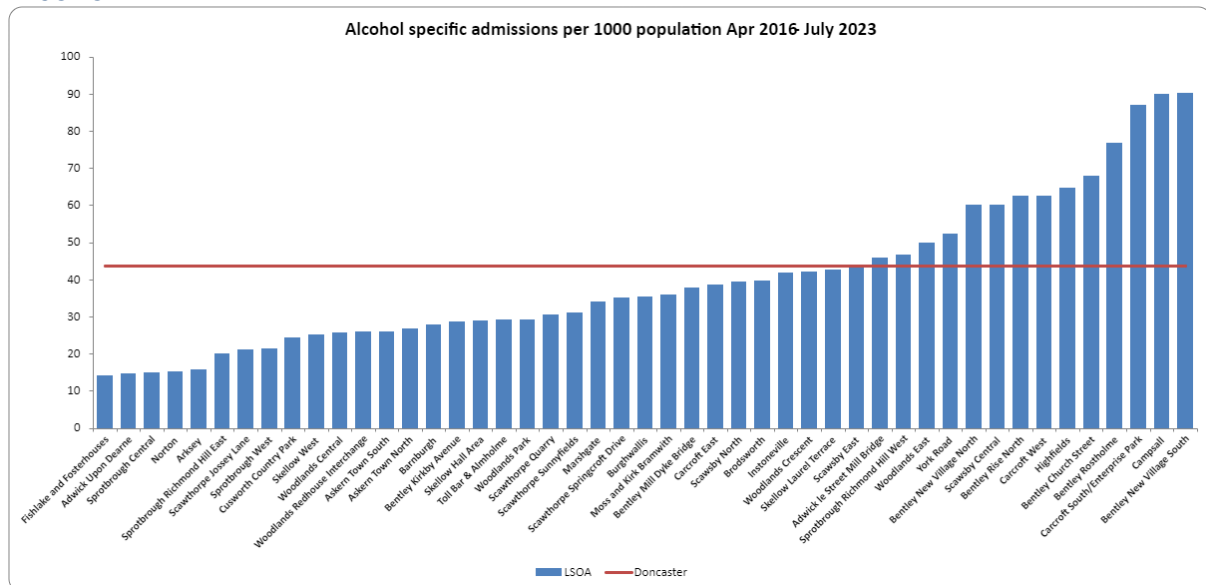


Figure 11. Alcohol Specific Admissions per 1000 population April 2016-2023 (ONS, 2021)

Figure 11 shows there is considerably more issues related to alcohol in Highfields than many other communities in Doncaster. Highfields (64.6 per 1000) are reported to have the 6th highest rates of alcohol related admissions in Doncaster, considerably higher than Doncaster average (43.6 per 1000). Highfields should be a focus point when considering future alcohol related projects with the aim of reducing such incidences.

Life Expectancy

Residents in the Adwick and Carcroft ward have a significantly lower life expectancy. Males have a life expectancy of 75.3yrs compared to the average of Doncaster 77.9yrs and England 79.5yrs. Female life expectancy is 78.1yrs, compared to Doncaster's of 81.3yrs and England's of 83.2yrs.

Causes of Death

Public Health England (2021) shows that mortality rates from all causes and across all ages in Adwick & Carcroft (156.5 per 1000) are higher than Doncaster (116.1 per 1000). Death rates from respiratory diseases including COPD and lung cancer (175.8) are significantly higher compared to those reported for Doncaster (125.3 per 1000). Adwick and Carcroft ward also has significantly higher mortality rates from circulatory diseases (135.8) compared to Doncaster (109.3 per 1000) and mortality rates from all cancers (137.3 per 1000) compared to Doncaster (116.1). Adwick and Carcroft have significantly higher rates of preventable deaths in under 75s (162.5 per 1000) than Doncaster (128.7 per 1000).

Smoking

Table 2. Smoking Prevalence in Primary Care Network practices across Doncaster (NHS England, 2023)

Practice	Sum of age 15+	Sum of Smokers	Sum of Prevalence
The Flying Scotsman Health Centre	9671	3053	31.57%
Frances Street Medical Centre	5931	1532	25.83%
The New Surgery	6143	1447	23.56%
The Nayar Practice	4229	979	23.15%
The Ransome Practice	6749	1519	22.51%
Edlington Health Centre Practice	4010	877	21.87%
Thorne Moor Medical Practice	7867	1688	21.46%
Conisbrough Medical Practice	1377	287	20.84%
Askern Medical Practice	6441	1333	20.70%
Field Road Surgery	7840	1615	20.60%
Kingthorne Group Practice	11261	2272	20.18%
Northfield Surgery	8405	1681	20.00%
Mexborough Health Centre	4130	821	19.88%
Great North Medical Group	13539	2682	19.81%
Regent Square Group Practice	8533	1675	19.63%
Conisbrough Group Practice	9756	1906	19.54%
Don Valley Healthcare	11148	2157	19.35%
St. Johns Group Practice	7301	1373	18.81%
The Scott Practice	12879	2327	18.07%

The Rossington Practice	6766	1207	17.84%
The Lakeside Practice	7261	1280	17.63%
Denaby Medical Practice	2921	509	17.43%
West End Clinic	3706	643	17.35%
White House Farm Medical Centre	5181	867	16.73%
Asa Medical Group	16707	2794	16.72%
Petersgate Medical Centre	7633	1225	16.05%
St Vincent Medical Centre	12203	1817	14.89%
The Oakwood Surgery	4797	677	14.11%
Mount Group Practice	11271	1567	13.90%
Scawsby Health Centre Practice	4850	655	13.51%
The Burns Practice	13152	1717	13.06%
Hatfield Health Centre	7785	952	12.23%
Park View Surgery	2126	238	11.19%
Dunsville Medical Centre	5268	542	10.29%
The Tickhill & Colliery Medical Practice	7447	700	9.40%
The Mayflower Medical Practice	6353	544	8.56%
Barnburgh Surgery	2044	174	8.51%
Doncaster	274681	49332	17.96%

According to NHS England (2023), there are 64045 registered patients with Doncaster North Primary Network (PCN) in North of Doncaster, 11,885 of those are registered as smokers. Highfields does not have a GP located within the community boundaries, therefore, data will be highlighted from those GPs closest to Highfields that may provide an indication of Highfields smoking prevalence. The Ransome practice is amongst the top 5 GP's with the highest smoking prevalence in patients across Doncaster (Table 1). A total of 22.5% of patients registered at this GP are reported to smoke. Petersgate Medical Centre is located in Adwick Le Street where 1225 patients are registered as smokers. This equates to 16.1% of patients. Data taken from Great North Medical Group suggests smoking prevalence to be much higher in Carcroft. That is, a total of 2682 residents are registered as smokers, equating to 19.8% of GP users which is significantly higher than Doncaster overall. It must be noted that such data is taken from self-reported measures when signing up to a GP and so, relies on individuals self-reporting their behaviours. It must also be noted that residents registered at GPs do not necessarily reside in that community and may not truly reflect the prevalence of smoking in specific communities.

Loneliness and isolation

Around 34.1% of older people (>65 year-olds) live alone in Adwick and Carcroft compared to 31% across Doncaster and England. Of the total number of households in Highfields 21.8% are one person households compared to 30.6% in England. Whilst

this does not demonstrate loneliness and/or isolation, it is an indicator to be considered alongside local intelligence.

The graphic below highlights the percentage of residents in Highfields who have been diagnosed with clinical depression, as well as rates of other self-reported indicators of mental health and wellbeing. All of these are higher than Doncaster.

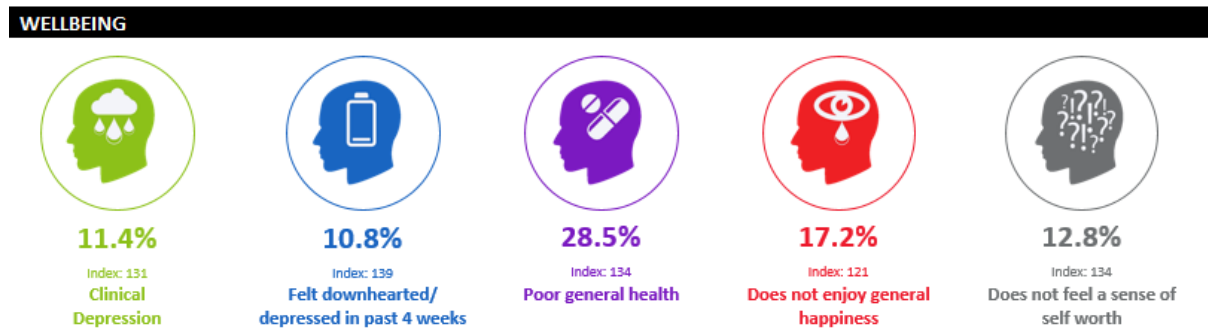


Figure 12. Wellbeing of Highfields residents (City of Doncaster Council, 2021)



Physical Activity

The data below is the same as reported in 2021, updated figures will be included when access to the most recent physical activity data is available.

Levels of physical activity in Adwick and Carcroft are low compared to the rest of the borough. This can be seen in the map below, which identifies the areas with the highest numbers of inactive households:

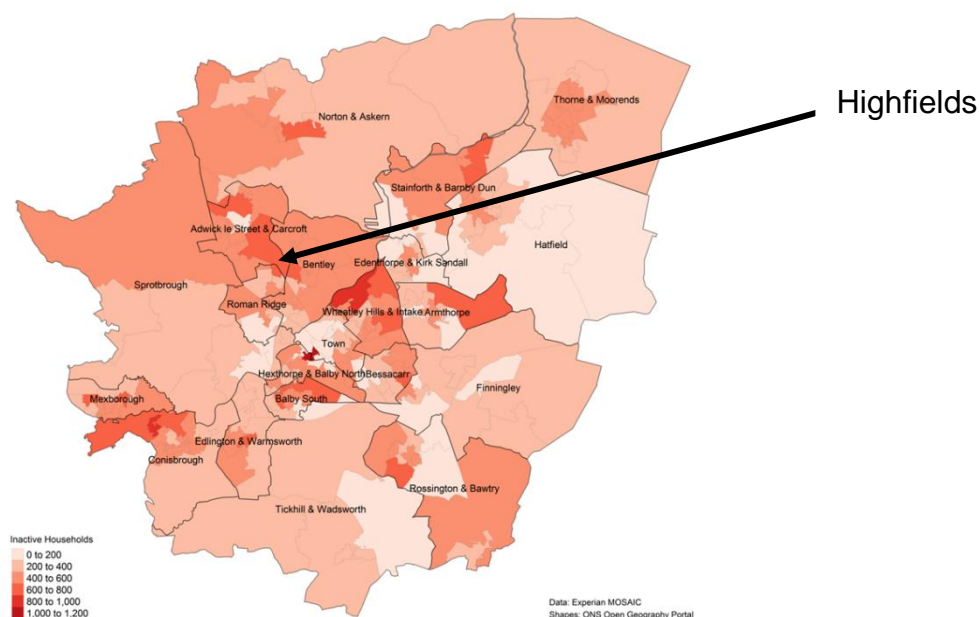


Figure 13. Levels of activity across Doncaster (Mosaic, 2021)

Adwick le Street has 883 households that are likely to have high levels of inactivity. This data has been overlaid with the number of children and young people and with deprived, inactive households. This triad of data then positions Adwick le Street as an area of focus. The table below shows the number of inactive, low-income households and children and young people:

Table 3. Get Doncaster Moving Priority communities

Community	Inactive households	Low Income households	C&YP	Total
Adwick le Street	883	877	920	2680
Denaby	951	913	514	2378
Wheatley Park & Wheatley Hills	802	885	667	2354
Bentley	883	692	773	2348
Edlington	667	858	726	2251
New Rossington	673	823	749	2245
Intake	651	781	668	21000
Skellow & Carcroft	594	892	563	2049

Stainforth	618	738	676	2032
Thorne	747	817	367	1931

A Get Doncaster Moving survey identified the following key barriers to physical activity for inactive people in Adwick and Carcroft:

- Not wanting to be active/Having less desire to be active (reflective motivation)
- Not having routines or habits (automatic motivation)
- Having less physical skills and stamina to be active (physical capability)

Active Travel

The 2022 Pupil Lifestyle Survey shows that 37% of the school children in Adwick and Carcroft who took part reported walking to school, a 4% decrease since 2020, which is lower than Doncaster (47%). Physical activity via school clubs is 12%, which is an 8% decrease since 2020 and lower than the Doncaster average of 18%. Furthermore, 82% of school-aged children in Adwick and Carcroft reported enjoying physical activity which is a 10% increase since 2020 and is now above the Doncaster average of 79%. In 2020 for those who reported not enjoying physical activity, the most common reason was 'being outside in bad weather' (47%). In 2022 the most common reasons are 'Not very good at it', 'Just prefer to do other things' or 'I feel shy about my body' (all 38%).

Population

Population size

Adwick & Carcroft ward: 16,697

Highfields: 1,345

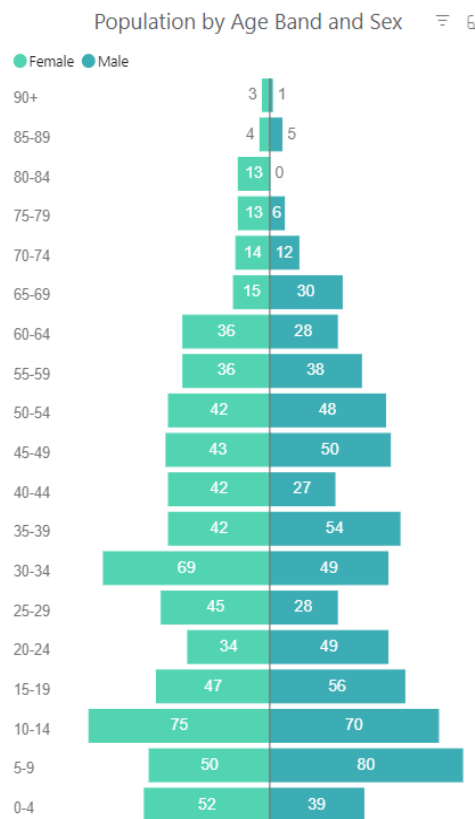


Figure 14. Age profile of Highfields population (ONS, 2021)

Age Profile

The age composition of the population of Highfields is similar to Doncaster. 63.7% of residents in Adwick and Woodlands are of working age. The median age of Highfields residents is 38yrs, slightly lower than Doncaster (41yrs). In Highfields 675 residents are female (50.1%) and 670 are male (49.9%) with the most prevalent age being between 10-14 years in females (75) and 5-9 years old in males (80) indicating a large proportion of children and young people. In Highfields there are 54 male residents over 65 (4.0%) and 62 females over 65 (4.6%), when considered against the rates of long term health conditions, this indicates that people in Highfields may be developing conditions younger.

Ethnicity and Language

In Highfields the community continues to be a predominantly White British (92.3%), which is similar to Doncaster (93.1%) but lower than England (81%). 2.1% of residents are Black, Black British, Black Welsh, Caribbean or African ethnic group, this is higher than the borough average (1.2%) but slightly lower than the England figure (4.2%). Those from Asian, Asian British or Asian Welsh (1.3%) is lower than the Doncaster average (2.9%), both significantly lower than England (9.6%). Those from Mixed Ethnic groups & Other ethnic groups are similar to the Doncaster and England figures. 95.4% of residents in Adwick & Woodlands speak English as their main language and 3.4% of households have no residents that speak English as their main language which is lower than Doncaster (5.1%).

Housing

Housing conditions and the surrounding environment can have profound impacts upon residents' health and exacerbate health inequalities. According to the 2021 Census, there are 480 households in Highfields, of which 59.8% are terraced, significantly higher than Doncaster (21.1%). 33.75% are semi-detached, lower than Doncaster (45.5%). Only 4.5% of houses in Highfields are detached or bungalows, significantly lower than Doncaster (24.1%), and 1.9% are flats or maisonettes, significantly lower than Doncaster (8.6%). 26.5% of households have 4 or more people, higher than Doncaster (17.1%) and England (19.9%) which aligns to Adwick & Carcroft being with fifth highest ward with regards to overcrowded housing (5.7%) when compared to Doncaster (1.2%).

31.9% of houses in Highfields are socially rented which is significantly higher than Doncaster (17%) and England (17.1%). A significantly lower amount of owned outright (24.2%) than Doncaster (33.6%) or owned with a mortgage (23.8%) than Doncaster (29.6%). The prevailing amount of people per house is 2, however households with 1 person (24%) are more common than across the borough. This aligns with the Adwick and Carcroft ward data which reports 34.1% of older people live alone, a higher proportion than Doncaster (31.6%) and England (31.5%).

Anti-Social Behaviour

North locality reported the lowest number of ASB, hate crime and low-level crimes during the first 6 months of 2023/24. Figure 14 shows that Adwick and Carcroft ward had the highest rates of crime and ASB across the North Locality.



Figure 15. Number of early interventions, ASB, hate crime and low-level crime issues identified and managed at Locality level (Stronger Communities, Doncaster Council 2023/24)

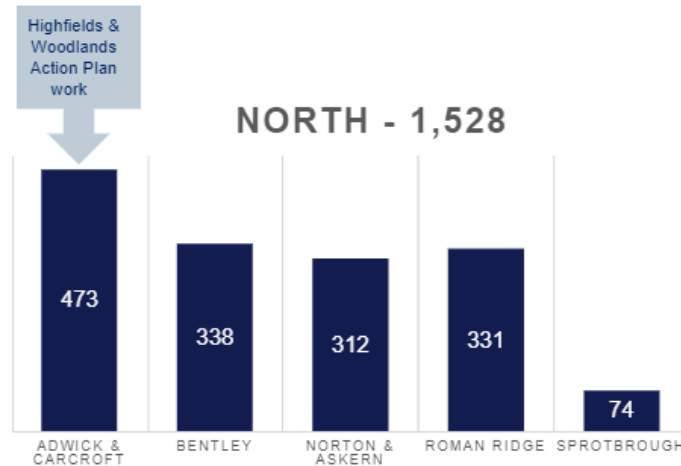


Figure 16. Number of early interventions, ASB, hate crime and low-level crime issues identified and managed at Ward level (Stronger Communities, Doncaster Council 2023/24)

Vulnerable Victims

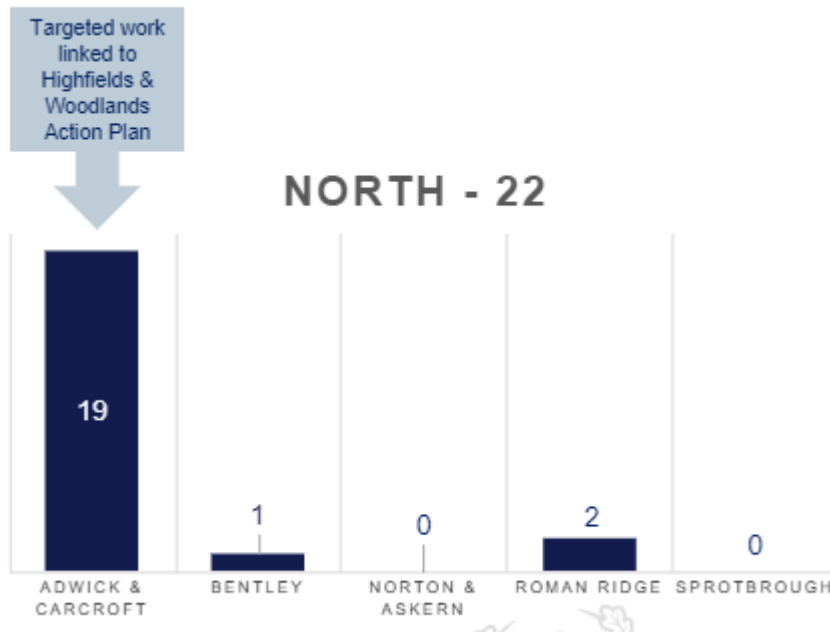


Figure 17. Vulnerable Victims Ward Breakdown (Stronger Communities, Doncaster Council 2023/24)

Adwick and Carcroft have the second highest number of vulnerable victims living within the ward boundaries, the largest number across the North of Doncaster. It must be noted this data only reflect the residents that have been identified and supported by the Stronger Communities team at Doncaster Council, and there may be more residents that have not been identified or supported but fall within this bracket.

Community Insight

Appreciative Inquiry

The Well Doncaster Team undertake an Appreciative Inquiry within communities to gather insight to support co-designing action plans with the community. The AI questions are structured to pull on the successes of the past and present, to seek new potentials and possibilities and build on those through the Dream and Design stages.

The Appreciative Inquiry will include the following steps:

1. **Discovery** – This will involve engagement with the residents of Highfields to find out what is working well in the community. Responses will be themed to allow priorities of the community to be established.
2. **Dream** – Residents and key stakeholders will be invited to attend an initial workshop to discuss what ideas they have for their community and how these will meet the priorities highlighted in the discovery phase.
3. **Design** – All attendees are invited back for a second workshop to develop an action plan to direct work for the community.
4. **Deliver** – A collaborative way of working and investing resources in working towards to the actions from the previous phase.

Work is ongoing in Highfields to gather additional insight with a series of community engagement events, focusing on key community assets like the school and boxing club. A thematic analysis has been undertaken on community engagement responses about what is good about Highfields. These themes have been developed into thematic framework for Highfields and is informing further community development and engagement activity.

Themes	Sub Themes	Quotes	Commentary	Activity
Groups & Clubs	<ul style="list-style-type: none"> • Highfields Community Centre • Boxing Groups • Music Groups 	<p><i>“Excellent community hub at the community centre”</i></p> <p><i>“We need to see groups and life in this centre”</i></p> <p><i>“I want to see community groups and activities happening here”</i></p>	<p>Residents commented that although there were limited numbers of groups, those that were active are valued. There was a strong appetite for community assets like the community centre and parks to be utilised.</p>	<p>Highfields Primary Schools Parent-Teacher Association has been supported by Community Wealth Builder to set up as a Friends of Highfields Academy to provide activities for families utilising community assets.</p>

Green Spaces	<ul style="list-style-type: none"> • Highfields Country Park • Highfields Playground • Large field with football infrastructure on Market St 	<p><i>“Need an updated playground for the children”</i></p> <p><i>“I come to Highfields country park regularly and enjoy the walk”</i></p>	<p>It is clear the country park is a great asset to the community of Highfields. It is a beautiful space and people enjoy the walk. Highfields park in the centre of Highfields and other green spaces which residents want to access as families.</p>	<p>Ward Members, Street Scene and residents who live on the edge of Highfields Park, were supported to come together the paint the play equipment and create a more attractive and safer place for children and families. Future Parks team is working with Highfields Country Park Working Group to continue development and engagement in the park.</p>
Community Cohesion	<ul style="list-style-type: none"> • Clear up day • Great people • Neighbours • Family & friends 	<p><i>“The long term residents have great sense of community”</i></p> <p><i>“The community are friendly, the people are good”</i></p>	<p>The insight strongly indicates that although Highfields is isolated, the residents look out for one another with a lot of residents being born and raised in Highfields. Residents referenced past times where street and gardens were clean and expresses aspirations to see this again creating a strong sense of community pride.</p>	<p>Friends of Highfields Academy are being supported in developing a calendar of community events including bringing back the summer gala after 10 years, fundraising for a Christmas panto and developing plans to establish a Highfields Junior Football Club using the local park.</p>

Doncaster Talks

In 2019, Doncaster Talks undertook insight across the borough of Doncaster. Responses were separated into wards and thematically analysed. Across the Adwick and Carcroft ward, 207 responses were received. The main themes on what people liked about the area, what could be improved, and what the borough should focus on are displayed in the table below:



ADWICK & CARCROFT

Like:

- Good access to local amenities and lot of things to do
- Good community spirit/friendly people
- Good access to parks/greenspace

Improve:

- Cleaner streets – less litter and a better appearance for the area
- Invest in park and green space
- Reduce crime and ASB, in particular quad bikes

Focus:

- Cleaner Streets and less litter
- Tackle crime and ASB issues in the area
- Support services for vulnerable people
- Focus on more jobs and investment in the local area

Locality Plans

Locality plans have been developed by Team Doncaster to look at how we can work together to strengthen communities and improve the lives and opportunities for the residents living there. This plan has been put together with more input and engagement from those living and working in the North locality. Communities have told shared exactly what they want to see change and improve in the areas where they live, and this insight has enabled a workable plan to deliver in conjunction with our communities and partners.

Like 	Improve 
 Thriving Communities: Community Spirit & pride & Close to Family & Friends	 Improving community safety and ASB
 Environment, Facilities & Green Space: Good Transport Links	 Environment, Facilities & Green Space: More for Young People to do
 Environment, Facilities & Green Space: Local Facilities & Amenities	 Environment, Facilities Green Space: Improve Public Transport

For more information on the North Locality plans, please visit [North Locality Plan 2023 - Draft Version.pdf \(windows.net\)](#)

Community Investment

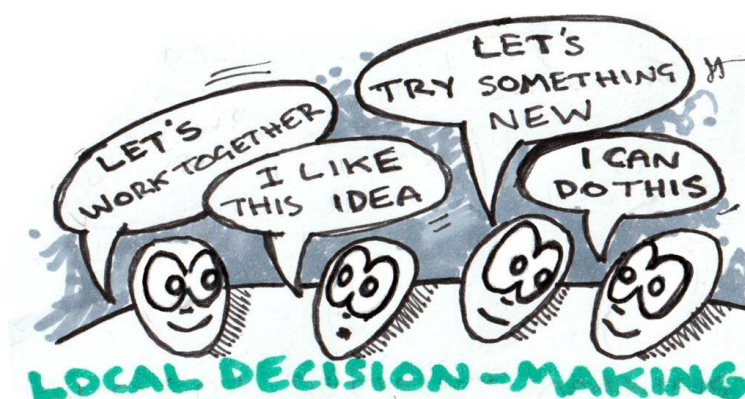
Table 5. Community Investment across North Locality (Doncaster Council, 2023)

Ward	Total Amount by Ward	Funding Type	Total Amount by Locality
Norton & Askern	£104,900.00	VCFS, Ward Members, Barrier Buster, Community Booster, Active Communities Grant, Community Wealth Builder Support (X4), Locality Commissioning, Holiday Activity Fund, LSCIF Round Two, Community Investment Fund, Community Wealth Builder Grants, Dragon's Den, Ward Members	£804,160.00
Adwick Le Street & Carcroft	£93,710.00		
Sprotbrough & Cusworth	£104,840.00		
Roman Ridge	£45,810.00		
Bentley	£454,900.00		

In the North locality, the sum of investment in community organisations was £804,160.00 as of November 2023 (Power BI, 2023). The main source of grants has been 'Community Wealth Builder Support', followed by 'VCFS Fund and 'Active Communities Grant'.

The top priority for investment in the North was to 'enable positive lifestyle choices including weight management, smoking cessation, physical activity, drug and alcohol misuse', followed by 'children and young people provision', 'support physical activity', and 'community spirit'.

In the Adwick Le Street and Carcroft ward, investment totalled £5,970.00 as of November 2023. In Highfields, Highfields Boxing Club and Highfields Community Partnership have received investment for 'community spirit and community events' and activities that 'enable positive lifestyle choices including weight management, smoking cessation, physical activity, drug and alcohol misuse', followed by 'children and young people provision' and 'increasing sense of community spirit'.



Appendix

Well Doncaster Annual reports

Well Doncaster Approach: <https://youtu.be/e1RKOZoGI10>

More information about how Well Doncaster has been meeting outcomes and objectives can be found in past and present annual report:

<https://welldoncaster.wordpress.com>

Census data 2021

The census is undertaken by the Office for National Statistics every 10 years and gives us a picture of all the people and households in England and Wales.

[Build a custom area profile - Census 2021, ONS](#)

[Census Maps - Census 2021 data interactive, ONS](#)

Public Health Data

Fingertips

This is a new fingertips profile that uses data from Local Health an existing PHE data tool. Local Health is a collection of quality assured health information presented for small geographical areas. By presenting data for small areas, Local Health provides evidence of inequalities within local areas. It supports targeted interventions to reduce such inequalities.

Local Health contains indicators related to:

- Population and demographic factors
- Wider determinants of health
- Health outcomes

It presents data for middle super output areas (MSOA), electoral wards, clinical commissioning groups (CCG), local authorities, and England as a whole.

Please note, as the Local Health tool was designed to allow users to map small area data, a mapping option has not been provided in this profile.

<https://fingertips.phe.org.uk/profile/local-health/data#page/0>

[Local Health - Public Health England - Reports: get a dashboard on a custom area](#)

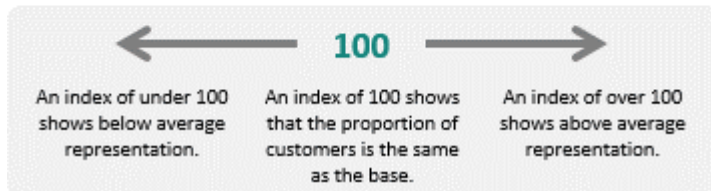
Acorn profiles

Wellbeing Acorn segments the population into 4 groups (Health Challenges; At Risk; Caution; Healthy) and 25 types describing the health and wellbeing attributes of each postcode across the country. By analysing significant social and health related behaviour, it provides precise information and an in depth understanding of upstream issues affected by current lifestyle traits

INTERPRETING THE REPORT

The Wellbeing Acorn profile report helps you understand the underlying demographics, lifestyle and health attributes of your customers and service users by comparing their Wellbeing Acorn profile to a base (e.g. UK population, area or other customer groups).

INDEX



The Wellbeing Acorn Profile contains 12 variables that are indicators of Disability or Infirmary in the population and 9 variables related to unhealthy Behaviours. The average score measured against the base profile of Yorkshire and the Humber is 100. A value above 100 indicates that the area population is overrepresented for this characteristic, below 100 the value is less than the average or underrepresented.

Get Doncaster Moving survey

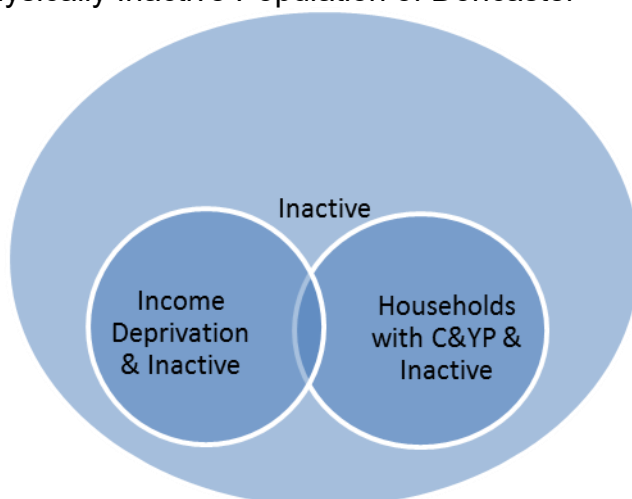
<https://getdoncastermoving.org/uploads/behavioural-insight-phase-one-summary-report.pdf?v=1644581925>

Mosaic data

Mosaic Public Sector classifies the UK population into one of 66 types and 15 groups through a detailed and accurate understanding of each citizen's demographics, lifestyles, behaviours and location.

The Physically Inactive Population of Doncaster

The Physically Inactive Population of Doncaster



The MOSAIC types who “Do not exercise” and “Do not take part in Sport” were searched and three priority groups have been identified through work with strategic partners as part of the development of Doncaster’s Physical Activity Strategy. The three priority groups are:

- The Inactive

- Families with children and young people
- People living in income deprivation

These groups are cross-referenced against the inactivity list allowing for the identification of MOSAIC types which are both likely to be inactive and living in deprivation as well as inactive and from households with children and young people. Link to the Get Doncaster Moving strategy; [Let's Get Moving! | Get Doncaster Moving](#)

Pupil Lifestyle Survey 2022

[Pupil Lifestyle Survey - Healthy Schools \(healthylearningdoncaster.co.uk\)](https://healthylearningdoncaster.co.uk)

Power BI – Joint Strategic Needs Assessment

The Joint Strategic Needs Assessment (JSNA) is a process that identifies the current and future health and wellbeing needs of a local population. The dashboards show information about the employment, health, and wellbeing of people in Doncaster. We use this information to inform our policies and strategies to improve the lives of everyone in the Doncaster area.

[Joint Strategic Needs Assessments - Team Doncaster](#)

