

Hooton Pagnell, Brodsworth, Pickburn, and Clayton Community Profile Well Doncaster



Well Doncaster

Community Led Health and Wealth

Empowering people in Doncaster to live better, healthier, and happier lives.

www.welldoncaster.uk

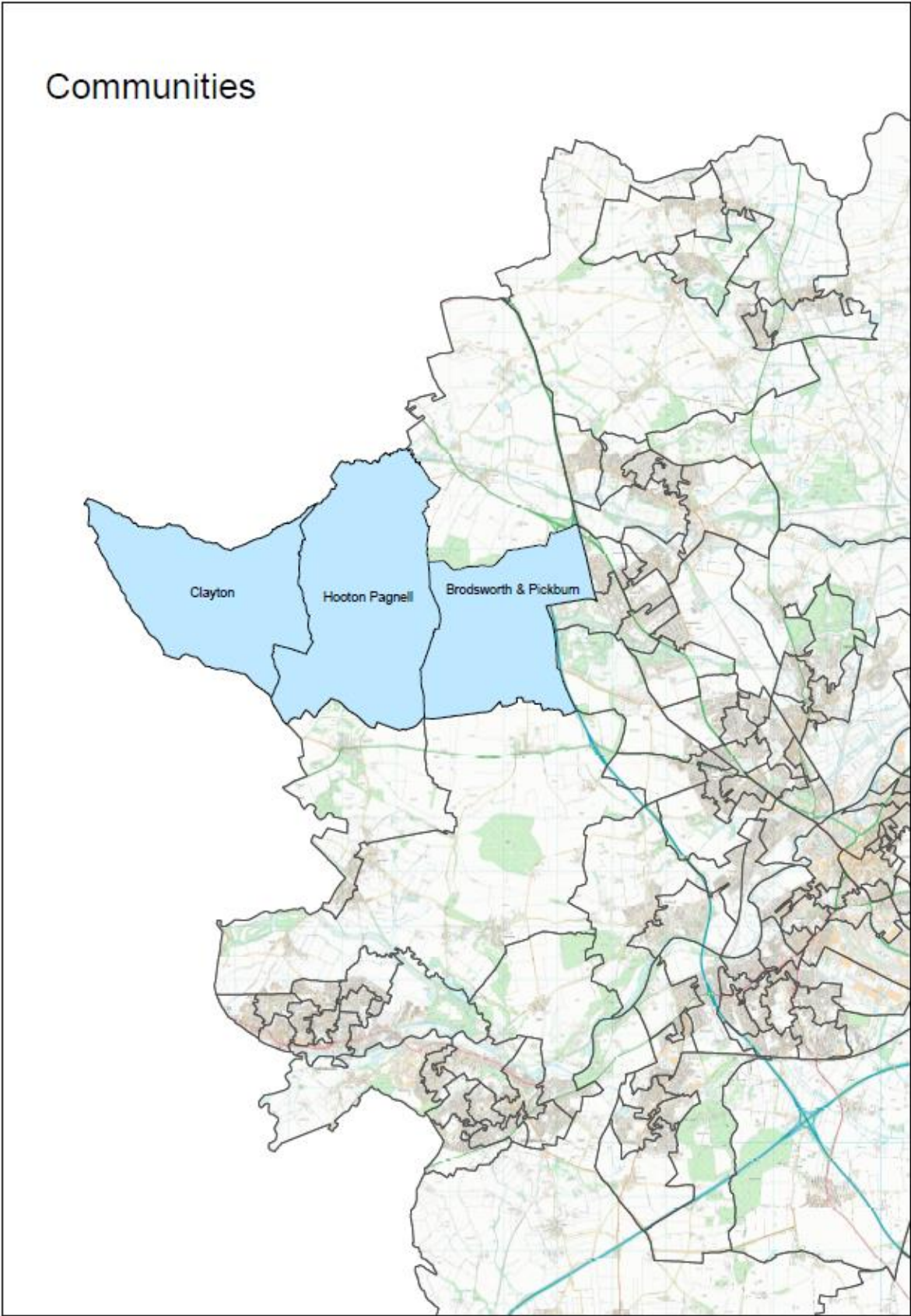
Well Doncaster
**Community
Wealth Builder**

Well Doncaster
Be Well



City of
Doncaster
Council

Communities



This Report

This report focuses on Hooton Pagnell, Brodsworth, Pickburn, and Clayton, part of the Sprotbrough ward in the North of Doncaster. Other communities in the Sprotbrough Ward have been covered in separate community profiles. The report begins with a one-page summary outlining key information and priorities about Sprotbrough and these communities. This report shows the initial conversations with communities, including ward members, community organisations, faith groups, residents and other organisations who work in the area. Communities' knowledge of their own areas enables them to identify their strengths and the assets on which they can build on. This document is shared with the intention of supporting those conversations and sharing information that might not be readily available to local people.

Where specific data for communities are unavailable, data for the Sprotbrough ward has been presented.



Hooton Pagnell



Almost 60% of residents aged 16 years and over are in employment



The majority of households in Hooton Pagnell are not deprived in any dimension, but 34% are deprived in one dimension



88% of residents report that they have 'very good' or 'good' health



High proportion of housing owned outright in Hooton Pagnell



Over half of residents are aged 50 years and over in Hooton Pagnell



No playing fields or green spaces identified in Hooton Pagnell and only 3% of residents walk or cycle to work

Brodsworth and Pickburn



The proportion of residents aged 16 years and over with Level 4 qualifications is lower in Brodsworth and Pickburn



Higher prevalence of household deprivation in Brodsworth and Pickburn than in neighbouring communities



21% of residents are considered disabled under the Equality Act



A high percentage of social housing in Brodsworth and Pickburn



Almost 1/4 of residents are under 19 years of age



There are more inactive households in Brodsworth and Pickburn

Clayton



Almost 38% of residents aged 16 years and over have Level 4 qualifications or above, but over 1/2 of residents are economically inactive



Low prevalence of household deprivation in Clayton; 61% are not deprived in any dimension.



High rates of emergency hospital admissions for injuries in 15-24-year-olds in Cadeby, Hickleton, and Hampole MSOA



High proportion of housing owned outright in Clayton



2/3 of residents are aged 50 years and over in Clayton



No playing fields or green spaces identified in Clayton

Contents

This Report.....	3
One Page Summary.....	9
Key Health Priorities	10
Assets	11
Asset Maps	11
Business Assets	11
Health Assets.....	13
Community Assets.....	15
Assets in the Community	17
Population Health Management.....	17
Ward Members	19
Health and Wealth.....	20
Deprivation.....	20
Wealth Inequalities.....	22
Food Poverty	23
Fuel Poverty.....	25
Employment.....	26
Citizens Advice Doncaster Borough (CADB)	30
Childhood Development.....	31
Childhood Obesity	31
Pupils Lifestyle Survey	31
Learner Outcomes	32
Family Hubs.....	32
Health Inequalities.....	32
Long-Term Health Conditions	32
Hospital Admissions	35
Alcohol.....	37
Smoking.....	38
Life Expectancy	38
Loneliness and Isolation	39
Vulnerable Victims (Stronger Communities)	39
Physical Activity	40
Active Travel	40
Green Spaces and Parks	41

Community Information	42
Population	42
Population Size	42
Age Profile	42
Ethnicity and Language	44
Housing	46
St Leger Housing	47
Household Characteristics	47
Crime/ Antisocial Behaviour	49
Community Insight.....	49
Appreciative Inquiry	49
Doncaster Talks	52
Locality Plan.....	54
Community Investment	54
Appendix	56
Well Doncaster Annual reports	56
Census data 2021	56
Public Health Data	56
Acorn profiles	56
Get Doncaster Moving survey.....	57
Mosaic data.....	57
Pupil Lifestyle Survey 2022.....	58
Power BI – Joint Strategic Needs Assessment.....	58

One Page Summary

Hooton Pagnell, Brodsworth and Pickburn, and Clayton are all part of the Sprotbrough ward which also consists of Sprotbrough, Cadeby, High Melton, Hampole, Skelbrooke, Barnburgh, Harlington, Adwick upon Dearne, Hickleton, and Marr. The latter communities have been covered in other community profiles. The Sprotbrough ward is located to the Northwest of the City and has a population of approximately 10, 800 (ONS, 2021).

Hooton Pagnell, Brodsworth and Pickburn, and Clayton are located in the northwest of the ward. Sprotbrough ward consists of 8 Lower-layer Super Output Areas (LSOAs). One of these (E01007587, Brodsworth) covers Hooton Pagnell, Brodsworth, Pickburn, and Clayton. These communities are also located in one Middle-layer Super Output Area (MSOA), namely Cadeby, Hickleton, and Hampole. Whilst there are low overall levels of income deprivation and poverty in the Sprotbrough ward, Hooton Pagnell, Brodsworth and Pickburn, and Clayton are considered more deprived communities than those in the South of the ward.

There are low levels of unemployment and a high proportion of economically active residents overall in this ward. A high proportion of residents (1/3) have level 4 qualifications or above. There is a low prevalence of childhood and adult obesity in the ward. Life expectancy for men and women are higher in Sprotbrough ward than across Doncaster, and for men this is higher than any other ward. Premature mortality and deaths from cancer, circulatory disease, coronary heart disease, stroke, and respiratory diseases are lower in this ward than across Doncaster. Colorectal cancer and lung cancer rates are also lower in Sprotbrough ward, but there is a higher incidence of breast and prostate cancer.

There are high levels of emergency hospital admissions for 15–24-year-olds in the Sprotbrough ward. Alcohol-specific admissions are low across the ward, but the prevalence of smokers, particularly at 15 years of age, is higher in Sprotbrough than across Doncaster. However, there are no health assets, in Hooton Pagnell, Brodsworth and Pickburn, or Clayton, meaning that residents must travel to neighbouring areas, such as Sprotbrough, to access health services. Accommodation in the ward is predominantly houses or bungalows.

Over half of housing is owned outright, whilst the proportion of socially rented housing is considerably lower than across Doncaster. Most residents live in single-family households.

Hooton Pagnell: The population size of Hooton Pagnell is approximately 190 (ONS, 2021). The most common age groups are 45-49-year-olds and 55-59-year-olds, and almost 60% are aged 50 years or over. Residents are predominantly white British. Almost 40% of residents have level 4 qualifications and above and there is a high proportion of residents who are economically active in employment. A large percentage of housing is owned outright, and most households consist of a single family. There are no green spaces and parks in this community.

Brodsworth and Pickburn: The population size of Brodsworth is approximately 3000 (ONS, 2021). The most common age group is 50-54-year-olds and residents are

predominantly white British. Indices of household deprivation are higher in this community than in Hooton Pagnell and Clayton. The proportion of residents with level 4 qualifications and above is lower than across Doncaster. The proportion of residents considered disabled is higher. There is a higher percentage of social housing in Brodsworth and Pickburn (24.6%) than across Doncaster.

Clayton: The population size of Clayton is approximately 200 (ONS, 2021). The most common age group is 55-59-year-olds and 2/3 of residents are aged 50 years or over. Residents are predominantly white British. Less than half of residents aged 16 years and over are economically active and in employment in Clayton, however almost 40% of residents have level 4 qualifications and above. A large percentage of housing is owned outright, and most households consist of a single family. There is an absence of green spaces and parks in this community.

Key Health Priorities

- There is an absence of health assets in Hooton Pagnell, Brodsworth and Pickburn, and Clayton, and green spaces in Hooton Pagnell and Clayton
- High prevalence of smokers at age 15 years in the ward
- These 3 communities all have an ageing population and there is a high proportion of residents considered disabled in Brodsworth and Pickburn

Assets

Well Doncaster use a community centred approach which allows investment in supporting, working with, and empowering communities to facilitate a healthy community. The voice and role of our communities and taking a strength/assets-based approach to work with individuals, families and communities is crucial to the achievement of our overall vision. It is recognised that work is needed in the community to expand the understanding of who, how and what is accessed in the area. Greater knowledge of the identity of each community/ward will allow a more appropriate and effective response to community needs.

Asset Maps

The maps below illustrate the different types of assets found in Hooton Pagnall, Brodsworth, and Pickburn, and Clayton. Maps have been split to show Business, Community, and Health assets separately. It should be noted that these maps are a starting point in understanding the community and that further work is needed amongst the community to understand all the assets and how they are used.

Business Assets

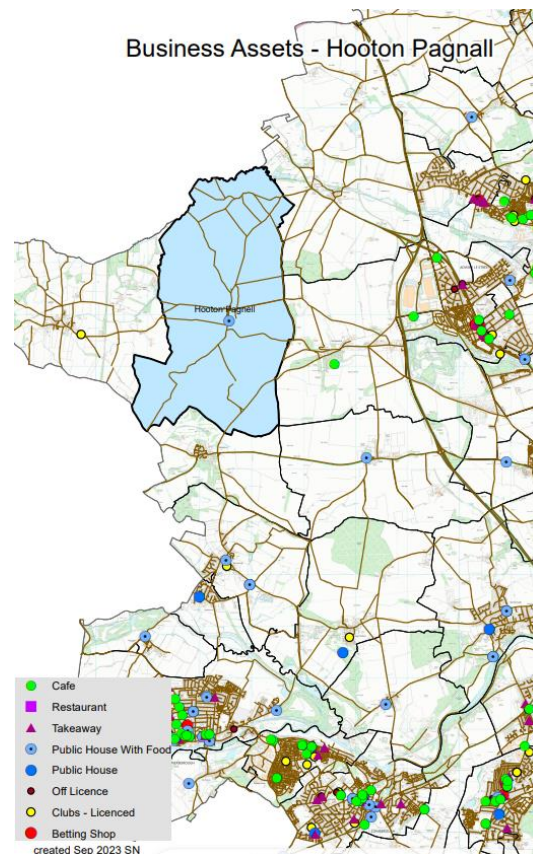


Figure 1. Business assets in Hooton Pagnall

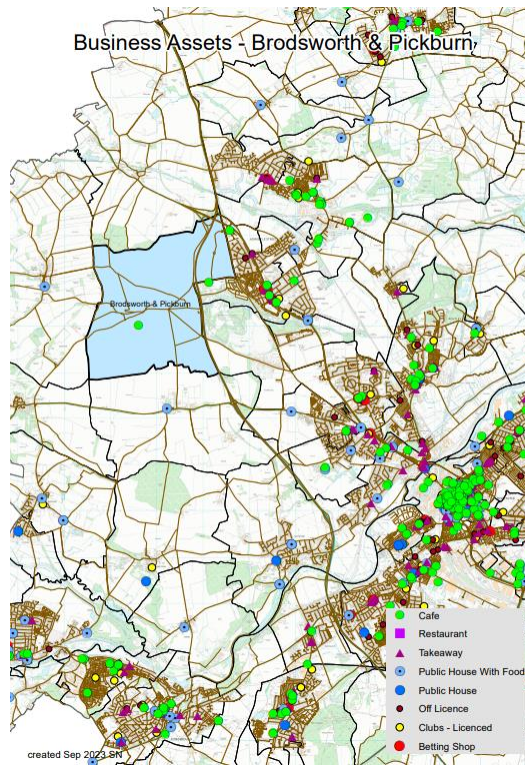


Figure 2. Business assets in Brodsworth and Pickburn

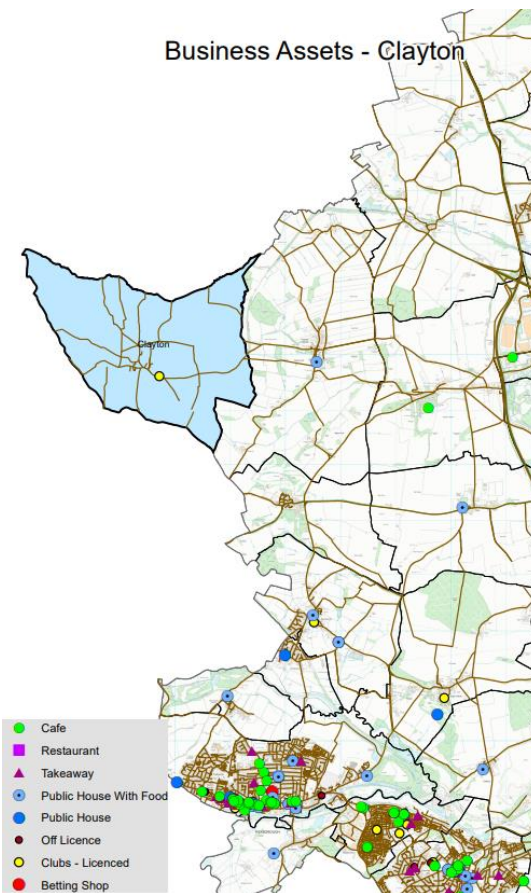


Figure 3. Business assets in Clayton

Health Assets

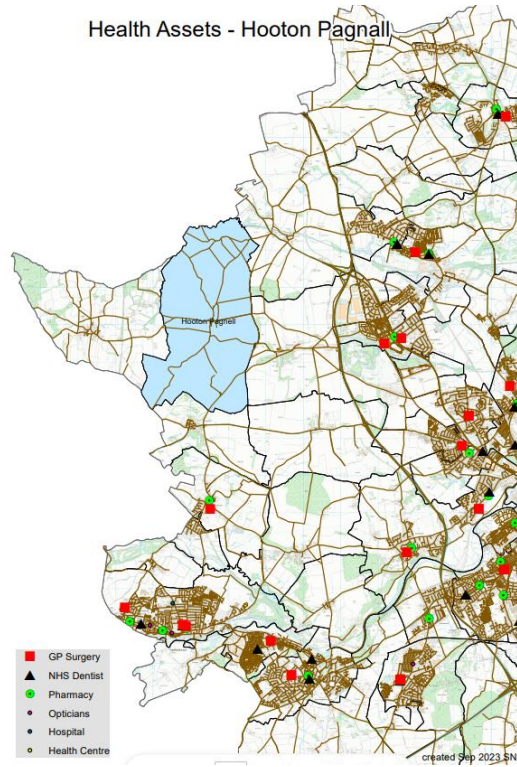


Figure 4. Health assets in Hooton Pagnall

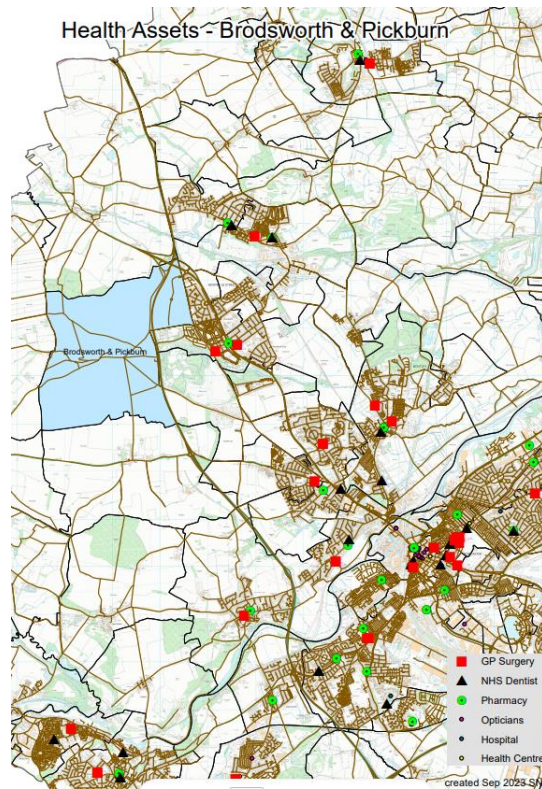


Figure 5. Health assets in Brodsworth and Pickburn

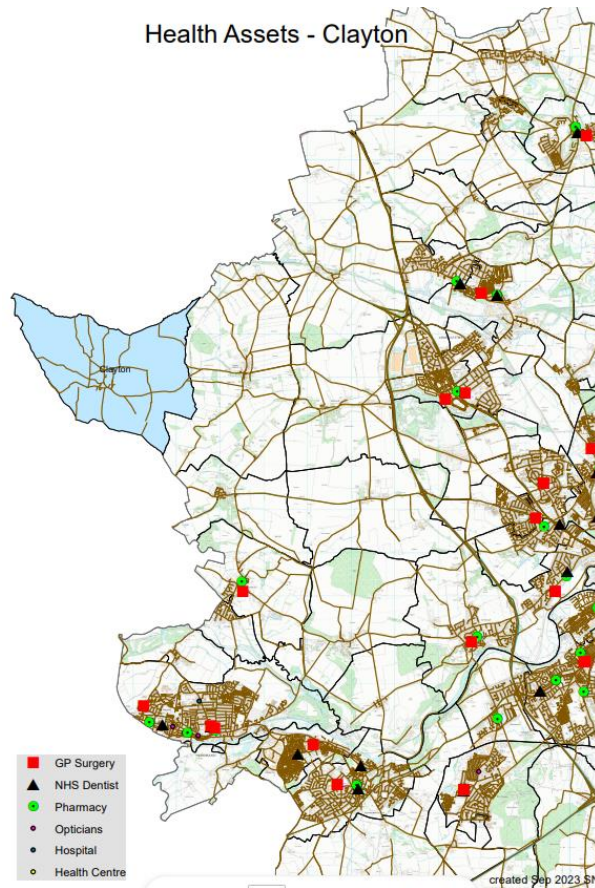


Figure 6. Health assets in Clayton

No specific health assets have been identified in Hooton Pagnell, Brodsworth and Pickburn, or Clayton. Therefore, residents must travel to neighbouring areas, such as Woodlands, to access health services.

Community Assets

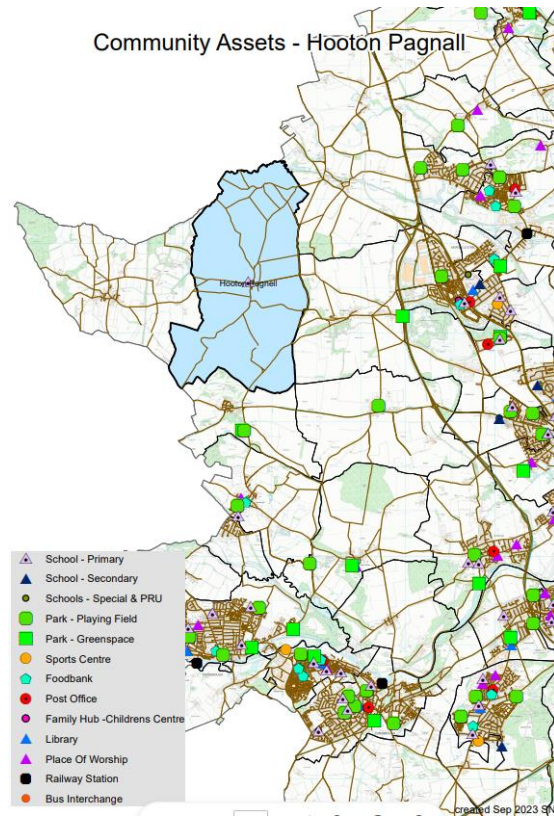


Figure 7. Community assets in Hooton Pagnall

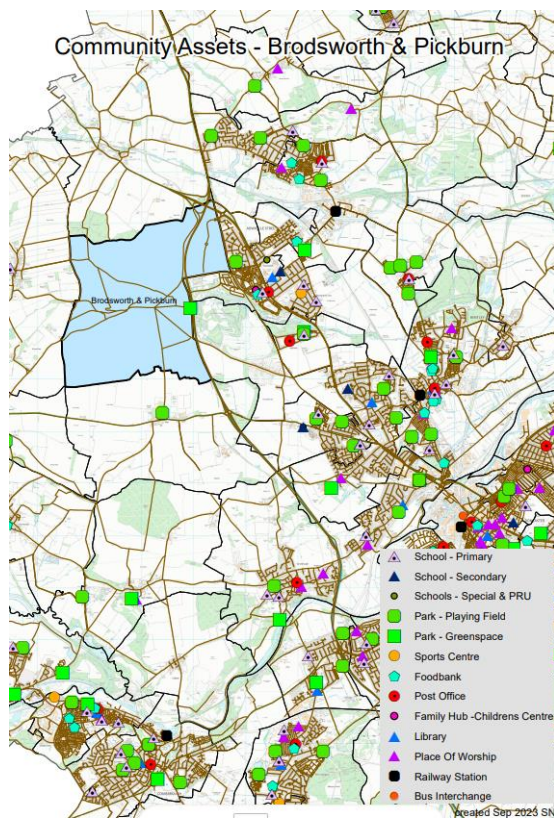


Figure 8. Community assets in Brodsworth and Pickburn

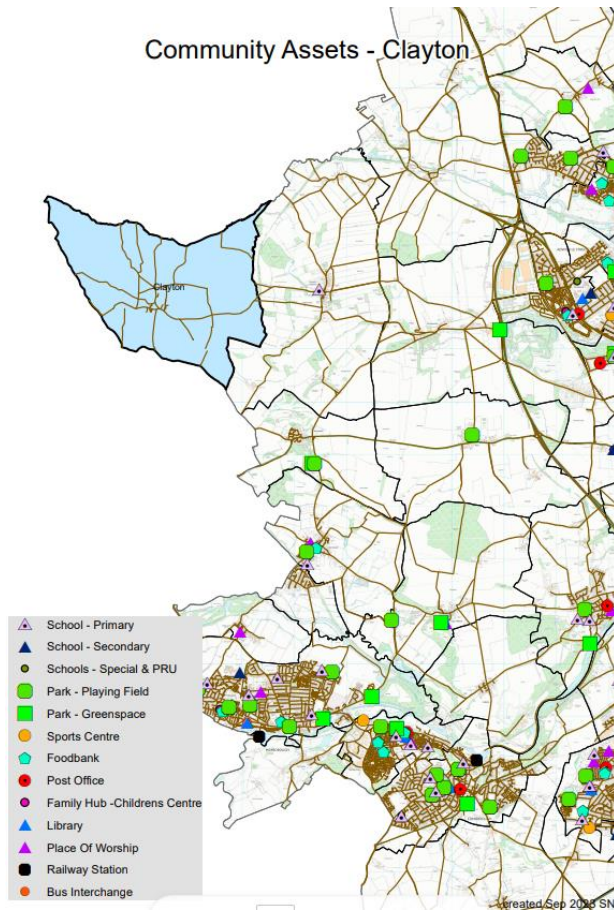


Figure 9. Community assets in Clayton

Assets in the Community

Population Health Management

As part of a population health management approach, the following assets have been identified and themed around place and people:



Institutions (Schools/colleges etc.)	Physical space (Parks, car parks etc.)	Local Economy (Local profit businesses)
Hooton Pagnell		
Places of Worship: All Saints Church Education: Hooton Pagnell All Saints C Of E Primary School	Physical Activity/Sports: Hooton Pagnell Cricket Club Facilities: Cricket facility, Bilham Lane	Other: Hooton Pagnell Hall Stable Arches Boutique Accommodation Rock Farm Livery Food/Beverage: 1903
Brodsworth		
Places of Worship: St Michael and All Angels Church	Physical Activity/Sports Brodsworth Running Club	Other: Brodsworth Hall and Gardens Hill Farm Livery Stables
<p>A diagram illustrating the concept of 'People'. At the center is a box labeled 'People'. Surrounding it are three other boxes: 'Individuals' at the top, 'Stories' at the bottom left, and 'Associations' at the bottom right. These four boxes are connected by a circular line, forming a circle around the central 'People' box.</p>		
Pickburn		
None	None	Other: R H Morrell Farming

INDIVIDUALS (Key Individuals within the community)	ASSOCIATIONS Local Groups/Clubs
Hooton Pagnell	
Ward Members Glenn Bluff Cynthia Ransome	Support: Church services Physical Activity/Sports: Walking routes Cricket Community groups: Hooton Pagnell Cricket Club
Brodsworth	
Ward Members Glenn Bluff Cynthia Ransome	Support: Church services Physical Activity/Sports: Running and walking
Pickburn	
Ward Members Glenn Bluff Cynthia Ransome	

Ward Members

The Sprotbrough ward has two ward Councillors. The local elected representatives for Sprotbrough ward are [Cllr Cynthia Ransome](#) and [Cllr Glenn Bluff](#).

They can be contacted as follows:

Glenn.Bluff@doncaster.gov.uk or Cynthia.ransome@doncaster.gov.uk

Sprotbrough



Councillor Glenn
Bluff

Sprotbrough
Conservative



Councillor Cynthia
Ransome

Sprotbrough
Conservative

Health and Wealth

Health inequalities are avoidable differences across the population, and between different groups within society. Health inequalities arise from the conditions in which we live, work and play. These conditions influence our opportunities for good health, how we think, feel and act, therefore shaping our health and wellbeing.

Deprivation

Evidence shows that people living in our most deprived areas face the worse health inequalities in relation to health access, experiences, and outcomes. Deprivation covers a range of issues and refers to unmet needs caused by a lack of resources, including but not limited to finances, housing, and education. It is measured in different ways including the Indices of Multiple Deprivation (IMD).

The deprivation map from 2019 below shows deprivation levels across the city by Lower Super Output Areas (LSOAs). Areas in red are those in the top IMD decile (1), which means they have been identified as being most deprived, whilst green are the bottom (7-10) deciles, meaning they are least deprived.

Hooton Pagnell, Brodsworth and Pickburn, and Clayton

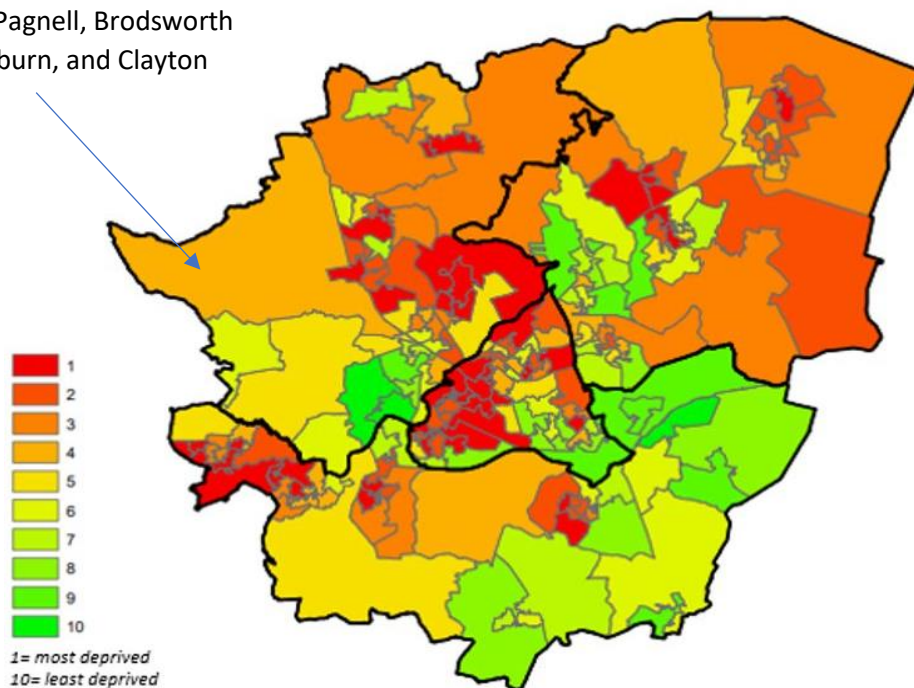


Figure 10. Deprivation deciles across Doncaster by LSOA (Fairness and Wellbeing Commission, 2019).

Hooton Pagnell, Brodsworth and Pickburn, and Clayton have a deprivation decile of 4, indicating that they are considered more deprived communities than those in the South of the Sprotbrough ward.

The 2021 Census data has been used to produce estimates that classify households in England and Wales by four dimensions of deprivation; Education, Employment, Health and Housing. Deprivation at a household level in the Sprotbrough ward can be seen in the figure below. The majority (54.3%) of households are not deprived in any

dimension, which is higher than has been reported for Doncaster overall (Figure below). However, 33.2% of households are deprived in one dimension, in line with that of Doncaster (ONS, 2021).

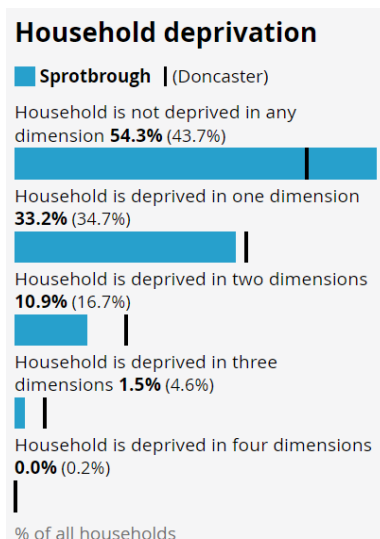


Figure 11. Household deprivation in the Sprotbrough ward (ONS, 2021)

Household deprivation for Hooton Pagnell, Brodsworth and Pickburn, and Clayton have also been assessed through the 2021 census, as follows:

- In Hooton Pagnell, 61.2% of households are not deprived in any dimension, 34.1% are deprived in one dimension, and 4.7% are deprived in two dimensions. No households are deprived in three or four dimensions (ONS, 2021).
- In Brodsworth and Pickburn, 44.6% of households are not deprived in any dimension, 33.5% are deprived in one dimension, 17.3% are deprived in two dimensions, and 4.5% are deprived in three dimensions (ONS, 2021).
- In Clayton, 61.1% of households are not deprived in any dimension, 23.2% are deprived in one dimension, 14.7% are deprived in two dimensions, and 1.1% are deprived in three dimensions (ONS, 2021).

Index of Multiple Deprivation (IMD) score for Sprotbrough ward is 13.3, lower than the overall scores for Doncaster (30.3) and England (21.7), indicating lower levels of deprivation in this area (Ministry of Housing and Local Government, 2019). Hooton Pagnell, Brodsworth and Pickburn, and Clayton all have identical IMD scores of 25.731. Hooton Pagnell is ranked 38 out of all 88 of Doncaster’s communities, whilst Brodsworth and Pickburn and Clayton are ranked 39.

Whilst the overall levels of deprivation in Sprotbrough ward are low, it is clear that some areas, such as those in the north of the ward, have higher deprivation levels. It is therefore important that households who are deprived in one of more dimension are included in any targeted work going forwards.

Wealth Inequalities

As the figure below shows, several income-specific indicators of deprivation, namely income deprivation, child poverty, and older people in poverty, are all significantly better in Sprotbrough ward than in England and are lower than across Doncaster (Ministry of Housing and Local Government, 2019). Income deprivation in Sprotbrough ward has been reported at 6.3% compared with 16.6% across Doncaster. At an MOSA level, 7.8% has been reported in Cadeby, Hickleton, and Hampole. In the Sprotbrough ward, income deprivation affects 6.2% of children (child poverty) and 8.4% of older people (older people in poverty); across Doncaster, these have been reported at 22.7% and 15.9%, respectively. In Cadeby, Hickleton, and Hampole MSOA, these have been reported at 8.1% (child poverty) and 9.4% (older people in poverty).

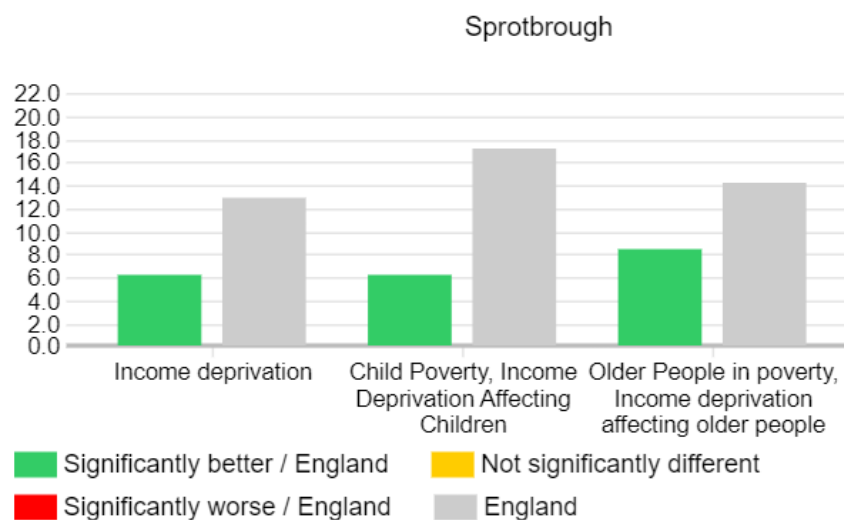


Figure 12. Deprivation indicators (2019) in Sprotbrough ward, reported as % of population. Source: Ministry of Housing and Local Government 2019, Office for National Statistics, (ONS) 2014

At a ward level, of the working age population in Sprotbrough ward, 1.6% are benefits claimants (Fairness and Wellbeing Commission, 2020; see figure below); this ward has the lowest claimant rate of all Doncaster wards, reflecting its high IMD score and low levels of income deprivation.

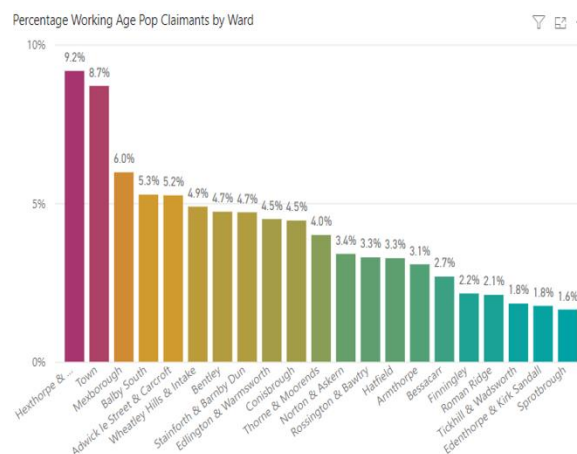


Figure 13. The percentage of working age population claimants by ward in Doncaster (Fairness and Wellbeing Commission, 2020)

According to ONS data (2022), four LSOAs covering the Sprotbrough ward are included in the top 10 LSOAs for the lowest percentage of population claimants (see figure below). However, these LSOAs do not include the Brodsworth LSOA which covers Hooton Pagnell, Brodsworth and Pickburn, and Clayton.

Top 10 LSOAs by Lowest % Population Claimants

Local Name	Claimants as % of Population
Adwick Upon Dearne	0.60%
Barnburgh	0.59%
Barnby Dun Central	0.00%
Barnby Dun East	0.88%
Bessacarr Stoops Lane	0.73%
Braithwell	1.02%
Skellow West	0.00%
Sprotbrough Central	0.45%
Sprotbrough West	0.63%
Tickhill South	0.87%

Figure 14. Top 10 LSOAs by lowest percentage population claimants (ONS, 2022)

Food Poverty

Out of the 31 foodbanks across Doncaster, there are 9 food banks in the North locality (equivalent to 26.3% of the foodbanks across Doncaster), namely Foresters Community Food bank, Leg Up Foundation, Bentley Baptist Church, Manna Community, Seventh Day Adventist Foodbank, Askern Cry, North Doncaster Development Trust, Lifeline Against the Breadline, and All Saints Foodbank. However, none of these are situated in the Sprotbrough ward; the nearest foodbanks to this ward are in Woodlands, Balby, and Denaby Main. All North foodbanks can be used by the residents in this locality. Data on the support provided by foodbanks and the reasons residents are accessing the service is provided by foodbanks monthly.

The number of children and adults supported by foodbanks in the North of Doncaster are displayed in the figure below. Since May 2022, an average of 163 adults and 96 children per month have been supported by foodbanks in the North. However, a large increase in the total number of residents being supported can be seen from April 2023 onwards.

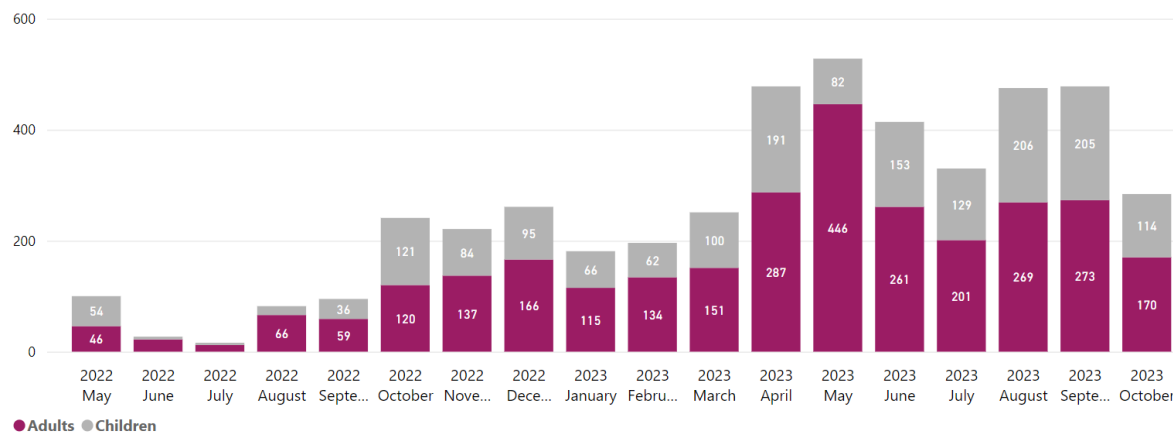


Figure 15. Number of adults and children supported each month by North locality foodbanks

The figure below shows the distribution of household types (couples, families, single parents, and individuals) supported by the foodbanks in the North during this time. The foodbanks have primarily supported individuals and families, followed by single parents.

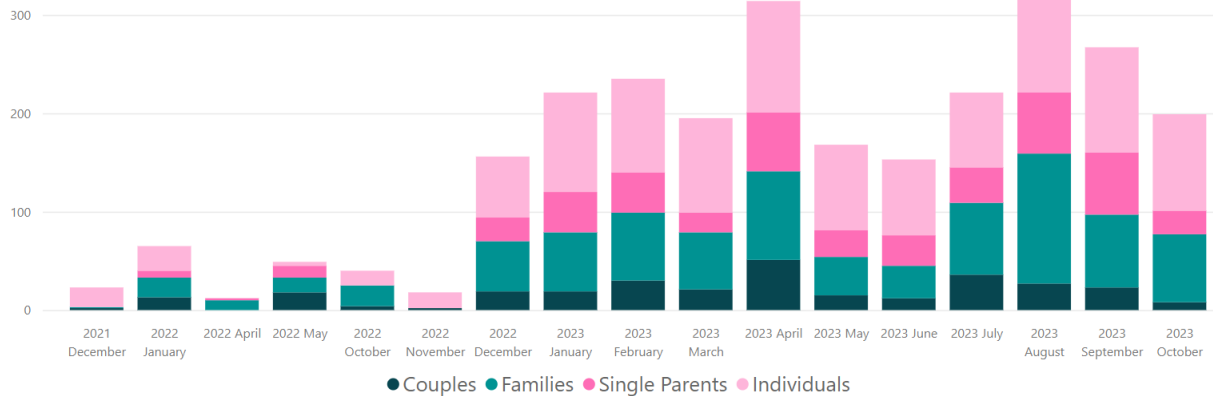


Figure 16. Distribution of household types supported by North locality foodbanks, reported as number of household types per month

Reasons given by residents requiring foodbank support in the North locality are displayed in the figure below. A wide range of reasons have been presented, but the top three reasons for requiring foodbank support are cost of living, low income, and debt. Other reasons stated are benefit changes and delays, sickness, domestic violence, homelessness, children’s holiday meals (in line with the school summer holidays), temporary accommodation issues, family breakdown, no recourse for public funds, refused short term benefits, and other food shortage.

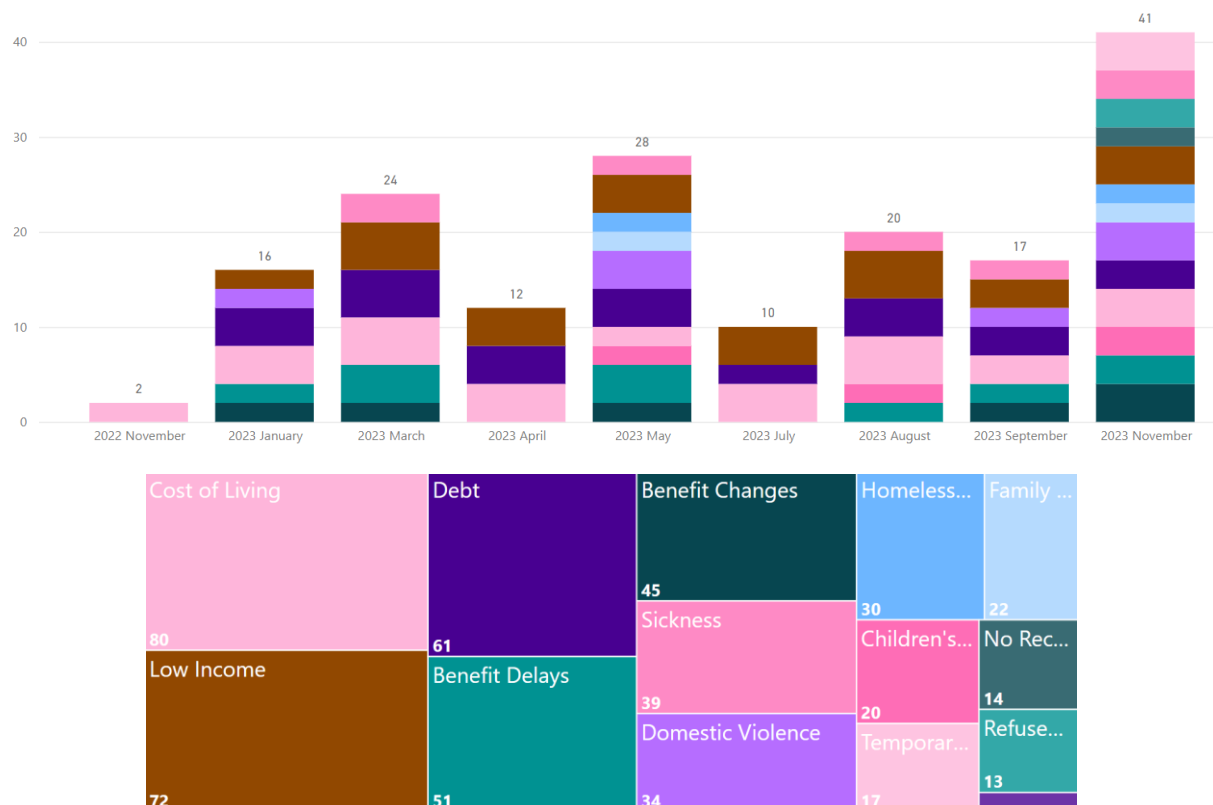
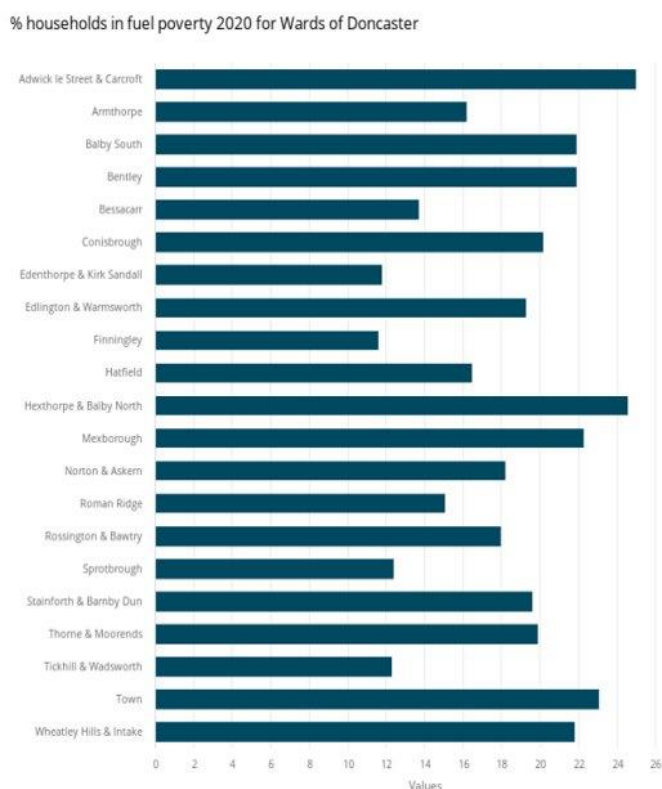


Figure 17. Reasons given by residents for requiring North locality foodbank support

Fuel Poverty

Approximately 12% of residents in the Sprotbrough ward were classed as experiencing fuel poverty in 2020 (see figure below; Department for Business, Energy & Industrial strategy, 2020). This is lower than most other wards in Doncaster and is



also lower than the 18.8% reported overall for Doncaster and 13.2% reported for England.

Figure 18. The percentage of households in fuel poverty by ward in Doncaster (Department for Business, Energy & Industrial strategy, 2020)

The table below displays an estimate of the proportion of households experiencing fuel poverty in the Lower Super Output Areas (LSOA) covering the Sprotbrough ward. The data for the LSOA which encompasses Hooton Pagnell, Brodsworth and Pickburn, and Clayton has been highlighted in green. The level of fuel poverty in these areas is higher than other communities in the Sprotbrough ward but is moderate compared to other areas of Doncaster. This is in line with the ward level fuel poverty data above and the comparatively lower levels of deprivation across the Sprotbrough ward.

Table 1. Proportion of households in fuel poverty by LSOA in the Sprotbrough ward

LSOA Code, name	Proportion of households in fuel poverty (%)
E01007583, Adwick upon Dearne (covering High Melton)	14.3
E01007585, Sprotbrough Richmond Hill East (covering Sprotbrough)	17.5
E01007586, Barnburgh (covering Barnburgh, Harlington, Adwick upon Dearne, Hickleton, and Marr)	10.2
E01007587, Brodsworth (covering Hooton Pagnell, Brodsworth and Pickburn, and Clayton)	18.4
E01007617, Sprotbrough West (covering Sprotbrough)	9.7
E01007618, Sprotbrough Richmond Hill West (covering Sprotbrough)	10.6
E01007619, Sprotbrough Central (covering Sprotbrough)	6.6
E01007620, Conisbrough East and Cadeby (covering Cadeby)	11.5

It is important to note that estimates of fuel poverty at LSOA level should be treated with caution. The estimates should only be used to look at general trends and identify areas of particularly high or low fuel poverty. They should not be used to identify trends over time within an LSOA, or to compare LSOAs with similar fuel poverty levels due to very small sample sizes and consequent instability in estimates at this level (Sub-regional fuel poverty report, 2023).



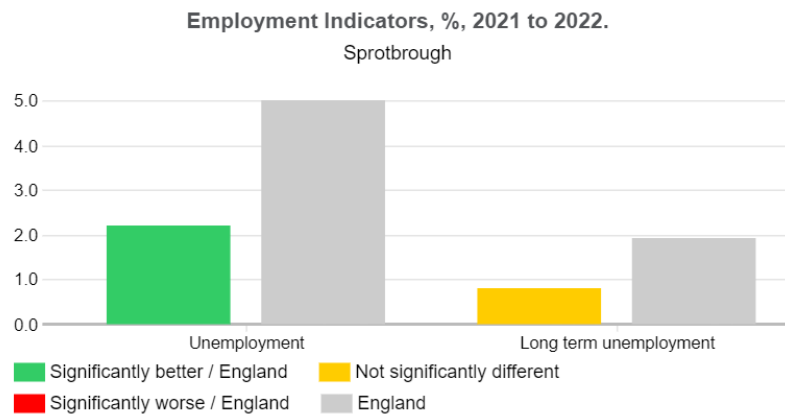
Figure 19. Interactions with CADB in Hooton Pagnell, Brodsworth and Pickburn, and Clayton

Employment

In the Sprotbrough ward, 2.2% of working age residents are unemployed; this is lower than the 6.1% reported for Doncaster (see figure below; NOMIS Labour Market

Statistics, 2022). At a MSOA level, Cadeby, Hickleton, and Hampole MSOA has reported 2.8% unemployment.

Of residents who are not in employment, 10.1% have worked in the last 12 months, 71.4% have not worked in the last 12 months, and 18.6% have never worked (ONS, 2021). The crude rate of long-term unemployment in this ward is 0.8 per 1000, compared with 1.5 per 1000 across Doncaster (NOMIS Labour Market Statistics,



Source: NOMIS Labour Market Statistics

2022). Cadeby, Hickleton, and Hampole MSOA has a crude rate of 0.0 per 1000.

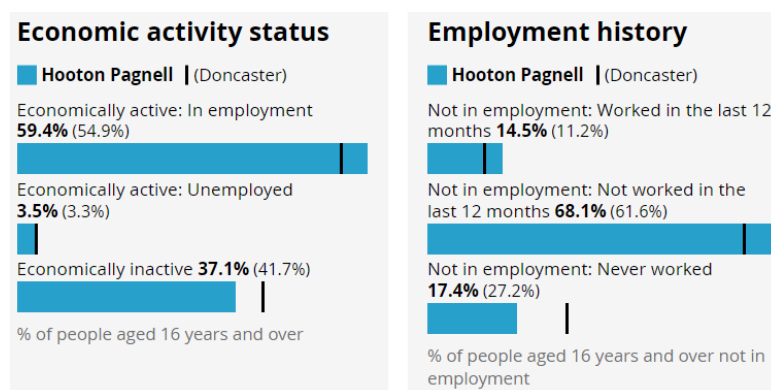
Figure 20. Percentage of residents in Sprotbrough ward in unemployment and long-term unemployment

Economically active adults are defined as those aged 16 years and over who are:

- in employment (an employee or self-employed)
- unemployed, but looking for work and could start within two weeks
- unemployed, but waiting to start a job that had been offered and accepted

Economically inactive are those aged 16 years and above who do not have a job and have not looked for work; this can include retired individuals and students.

At a community level, over half (59.4%) of residents aged 16 years and over in Hooton Pagnell are economically active and in employment (ONS, 2021; see Figure below). This is higher than that reported for Doncaster overall (5.9%). Of those not in employment, 14.5% have worked in the past 12 months, 68.1% have not worked in



the past 12 months, and 17.4% have never worked.

Figure 21. Employment activity status and employment history in Hooton Pagnell (ONS, 2021)

In Brodsworth and Pickburn, over half (54.1%) of residents aged 16 years and over are economically active and in employment (ONS, 2021; see Figure below). This is marginally lower than that reported for Doncaster overall. Of those not in employment, 9.7% have worked in the past 12 months, 63.7% have not worked in the past 12 months, and 26.5% have never worked.

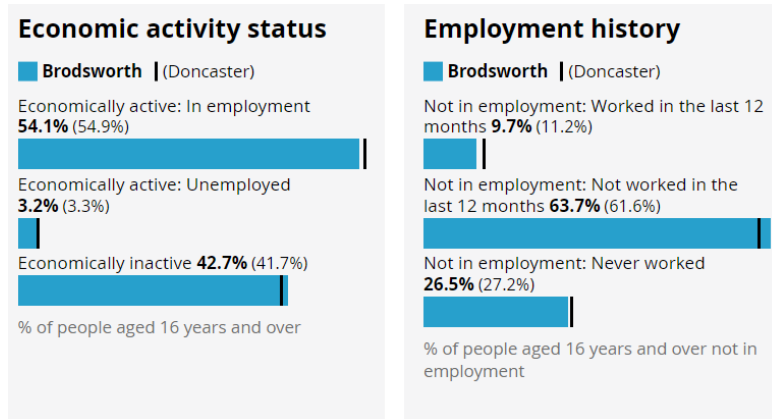


Figure 22. Employment activity status and employment history in Brodsworth and Pickburn (ONS, 2021)

In Clayton, less than half (47.3%) of residents aged 16 years and over are economically active and in employment (ONS, 2021; see Figure below). This is below that reported for Doncaster. Of those not in employment, 10.3% have worked in the past 12 months, 78.4% have not worked in the past 12 months, and 11.3% have never worked.

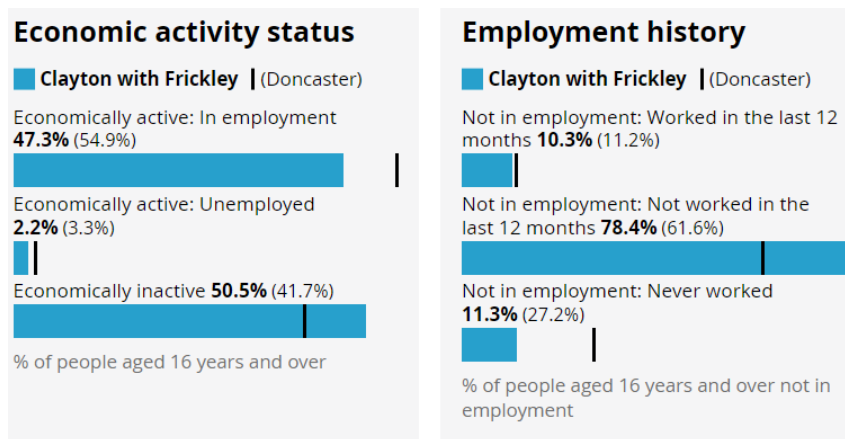


Figure 23. Employment activity status and employment history in Clayton (ONS, 2021)

In the Sprotbrough ward, most residents have level 1, 2, or 3 qualifications (41.0%). This is slightly below that of Doncaster (43.1%). However, the percentage of residents with level 4 qualifications and above is considerably higher than across Doncaster (33.1% versus 22.7%, respectively), indicating high levels of education/qualifications across the ward.

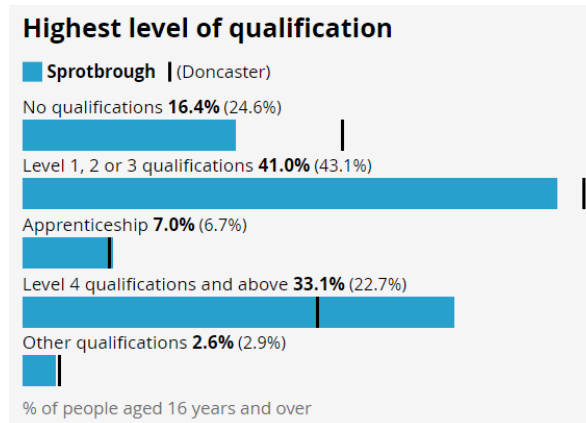


Figure 24. Highest level of qualification in Sprotbrough ward (ONS, 2021)

Similar patterns are observed when looking at individual communities of Hooton Pagnell and Clayton (see figures below). For Hooton Pagnell, 40.4% of residents have Level 1, 2, or 3 qualifications whilst 39.8% have Level 4 qualifications and above. For Clayton, these are 40.7% and 37.9%, respectively. In Brodsworth and Pickburn, the percentage of residents aged 16 years and over with Level 1, 2, or 3 qualifications is greater than that of Doncaster at 46.0%, but the percentage with Level 4 qualifications is lower at 20.3%.

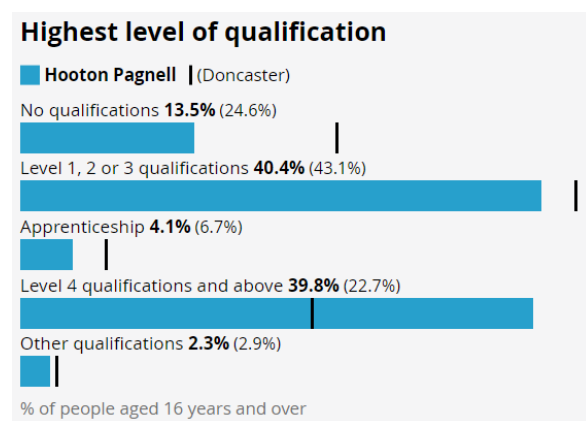


Figure 25. Highest level of qualification in Hooton Pagnell (ONS, 2021)

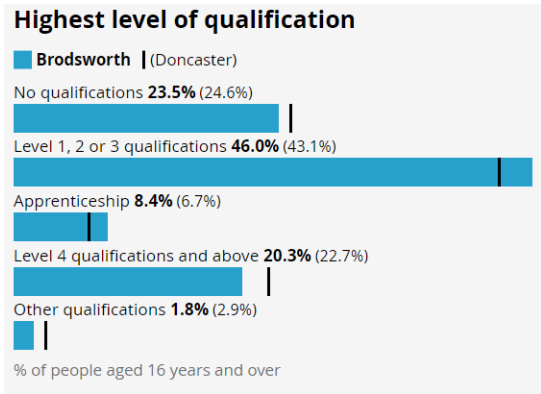


Figure 26. Highest level of qualification in Brodsworth and Pickburn (ONS, 2021)

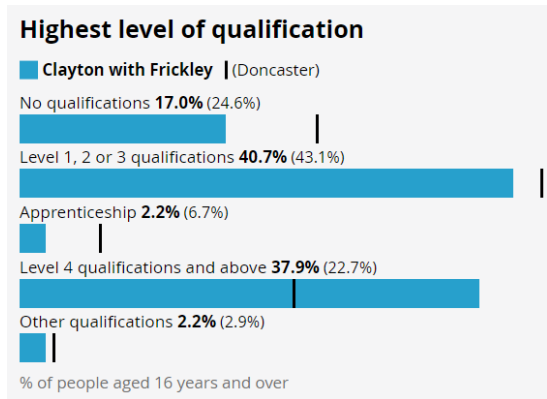


Figure 27. Highest level of qualification in Clayton (ONS, 2021)

Citizens Advice Doncaster Borough (CADB)

At a ward level, as of 30th October 2023, there have been a total of 195 new interactions and 7 repeat interactions (out of 57401 across Doncaster) with CADB by 36 residents in the Sprotbrough ward (CADB, 2023). This is equivalent to an average of 5.6 interactions with CADB per resident. These 36 individuals reside across 30 postcodes in the ward. Income gain from these interactions totals £18, 972.

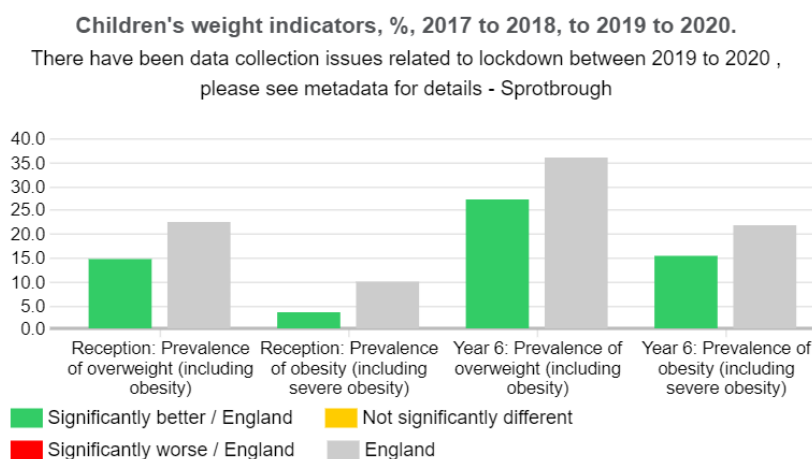
As illustrated in the map below, there have been no interactions with CADB in Hooton Pagnell and only a couple across Brodsworth and Pickburn and Clayton.

Childhood Development

Childhood Obesity

There is a lower prevalence of overweight and obesity in children in Sprotbrough ward compared with prevalence across Doncaster and England overall (Figure below; National Child Measurement Programme, 2020). In reception-aged children, prevalence of overweight (including obesity) and obesity (including severe obesity) in Sprotbrough ward are 14.8% and 3.7%, respectively. These compare with 26.1% (overweight) and 12.2% (obesity) for Doncaster. In Cadeby, Hickleton, and Hampole MSOA, 16.7% of reception-aged children are overweight, whilst 10.0% of children have obesity.

The prevalence of overweight (including obesity) and obesity (including severe obesity) in Sprotbrough ward are 27.1% and 15.3%, respectively. In Doncaster, these have been reported at 38.3% (overweight) and 24.0% (obesity). At MSOA level, 37.9% of year 6 children are overweight and 17.2% have obesity in Cadeby, Hickleton, and Hampole MSOA.



Source: National Child Measurement Programme (NCMP), NHS Digital

Figure 28. Prevalence of overweight and obesity in children in the Sprotbrough ward (National Child Measurement Programme, 2020)

Pupils Lifestyle Survey

The Doncaster Pupils Lifestyle Survey 2022 was completed by 101 pupils across years 4, 6, 8, and 10 from the Sprotbrough ward; 49% defined their gender as male, 49% as female, and 2% differently/preferred not to say. Of these pupils, 91% had a white ethnicity. English was a second language for 11% of pupils, compared with 22% for Doncaster as a whole; this was the lowest percentage reported across Doncaster wards.

Prevalence of disability was also lower than most other wards at 3%; this compares with 7% across Doncaster. Long-standing illness in pupils was reported at 12% in Sprotbrough ward, in line with that reported across Doncaster. Special Educational Needs (SEN) was reported for 6% of pupils from the Sprotbrough ward taking part in the survey, which is 4% lower than that reported for Doncaster overall and lower than all but one other ward. Of those reporting SEN, just over one-third (35%) of pupils received extra help at school; again, this is lower than the overall percentage for Doncaster (48%). The lowest percentage of young carers across Doncaster wards was reported in Sprotbrough (3%), which was less than half that of Doncaster overall

(7%). However, none of those who said they were a young carer had teachers who were aware of this.

The use of free school meals by pupils were lower in Sprotbrough than across Doncaster at 9% and 19%, respectively. The majority of Sprotbrough pupils reported feeling warm and comfortable at home (98%), able to keep themselves clean (95%), able to have a restful night's sleep (83%) and felt happy with life (72%). However, the percentage of pupils who felt safe at home was lower in Sprotbrough than across Doncaster overall, at 85% and 89% respectively. Less than half (45%) had visited the dentist within the last 12 months, however this was in line with that of Doncaster overall.

Learner Outcomes

Eleven children have been recorded as receiving Elective Home Education and one recorded as missing education in the Sprotbrough ward (City of Doncaster Council, 2023).

At KS4, each pupil is given an Attainment 8 score (a score out of 90) based on their 8 best GCSE grades including English, maths and at least 3 other traditional academic GCSEs (sciences, languages, and humanities). Other qualifications at an equivalent level (e.g. BTECs) can also count towards the score. In 2022, average GCSE attainment 8 score per pupil (out of 90) was 49.6 in Sprotbrough, higher than both Doncaster overall (45.2) and nationally (48.8).

In 2023, 57% of pupils achieved the expected standard in reading, writing, and mathematics at key stage 2 in Sprotbrough, a drop of 4% since 2022. This is higher than the across Doncaster as a whole (55%) but below the national percentage of 60%.

Family Hubs

There are three Family Hubs in the North localities of Doncaster, namely Adwick, Askern, and Bentley, but none of these are in the Sprotbrough ward. Adwick and Bentley Family Hubs are the closest Hubs for Sprotbrough ward residents.

Of the population of children aged 5 years and under living in Sprotbrough ward, only 57% are members of the Family Hub as of 2022-2023. This is considerably lower than the percentage reported for Doncaster overall (83%). There are 4 Open Families in the Sprotbrough ward working with Family Hub i.e., Parent Engagement Workers, Young Carers Practitioners and Family Hub Pathway Workers. Ten children aged under 5 years living in the Sprotbrough ward are receiving targeted support with their development (2022-2023) and ten eligible children have taken up their two-year funding entitlement.

Health Inequalities

Long-Term Health Conditions

Almost one-fifth (18.1%) of residents in Sprotbrough ward have a limiting long-term illness or disability, however this is lower than that reported for Doncaster overall (21.7%) (ONS Census, 2011). According to the ONS (2021), 17.8% of the population of Sprotbrough ward are considered disabled under the Equality Act. Both Hooton

Pagnell (11.8%) and Clayton (16.6%) have reported percentages lower than for across the ward. However, the proportion of residents who are considered disabled is higher in the Brodsworth area at 20.6% and this is also above the 20.3% prevalence recorded for Doncaster as a whole. As no health assets have been identified in this area, access to healthcare may be more difficult for these individuals.

When looking at self-reported health status, almost half (48.5%) of residents in Sprotbrough ward stated that they had ‘very good health’, higher than the 44.3% recorded for Doncaster (See figure below; ONS, 2021).

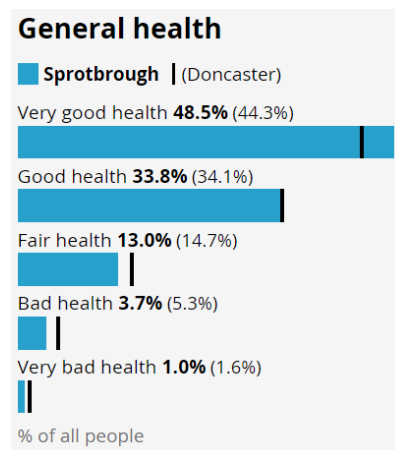


Figure 29. Self-reported general health of residents in Sprotbrough ward (ONS, 2021)

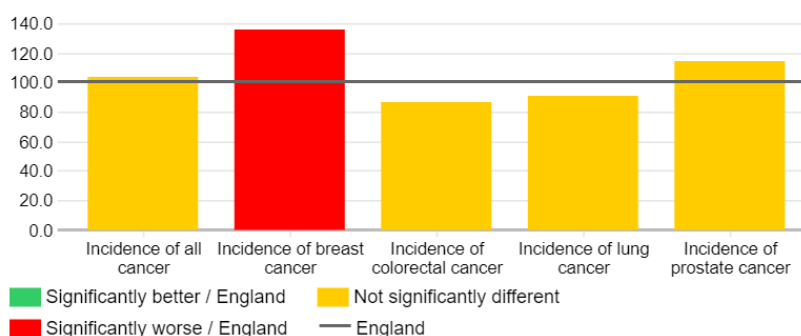
In Hooton Pagnell, most residents reported that they had ‘good health’ (47.1%), above that reported across Doncaster. ‘Very good health’ was reported by 40.8% of residents. In Brodsworth and Pickburn, 43.7% reported that they had ‘very good health’ and 34.7% reported ‘good health’; these are both similar to that of Doncaster. However, ‘very bad health’ was reported by 1.8% of residents, above that of Doncaster. This is in line with the higher prevalence of disability in this area. In Clayton, 43.9% of residents recorded ‘very good health’ and 38.4% recorded ‘good health’.

Sprotbrough ward is in the second lowest quintile (Quintile 4) for prevalence of obesity (including overweight) in adults aged 16 years and over, indicating low levels of obesity in this ward (Department of Geography and Environment, University of Southampton and Department of Geography, University of Portsmouth, 2014). Comparatively, Doncaster overall falls into the highest quintile (Quintile 1), indicating that it is in the highest 20% of areas for obesity prevalence nationally.

The standardised incidence ratio (SIR) of all cancer in the Sprotbrough ward is 103.8, similar to the 106.5 reported for Doncaster (Figure below; NHS Digital Cancer Analysis System, 2021). When evaluating the incidence of specific types of cancer, both colorectal cancer (86.9 SIR) and lung cancer (90.8 SIR) rates are lower in Sprotbrough ward than across Doncaster (99.3 SIR and 137.1 SIR, respectively). However, higher incidence of breast cancer and prostate cancer are reported for Sprotbrough ward (135.6 SIR and 114.2 SIR, respectively) than Doncaster (97.3 SIR and 97.2 SIR, respectively).

Cancer Incidence, 2015 to 2019, standardised incidence ratio (SIR)

Due to disclosure rules this data is not available at MSOA or CCG level, please see metadata for details. - Sprotbrough



Source: English cancer registration data from the NHS Digital Cancer Analysis System (AV2019 CASREF01), National Statistical Postcode Lookup (May 2021)

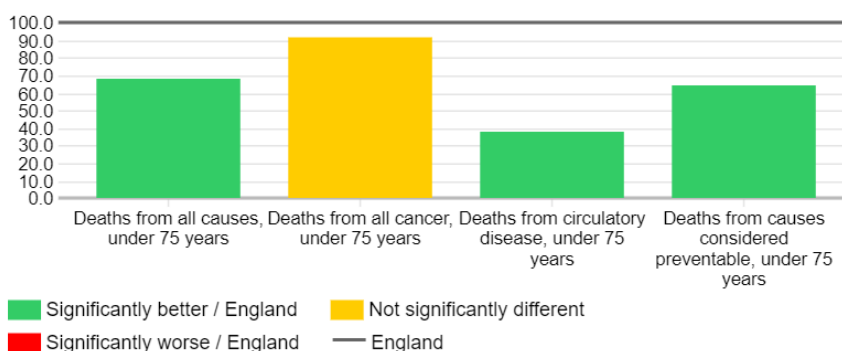
Figure 30. Incidence of cancer by type (2015-2019) in the Sprotbrough ward (NHS digital Cancer Analysis System, 2021)

Deaths from all causes under 75 years (premature mortality) is lower in the Sprotbrough ward than across Doncaster (67.7 versus 121.2 standardised mortality ratios [SMR]) and is significantly better than across England (see Figure below; ONS, 2021). When looking at

specific causes, deaths from all cancer (91.4 versus 117.6 SMR), deaths from circulatory disease (38.1 versus 118.9 SMR), and deaths from causes considered preventable (64.1 versus 128.7 SMR) are all lower in the Sprotbrough ward than across Doncaster. For Cadeby, Hickleton, and Hampole MSOA, these are 92.0 (all cancer), 51.0 (all circulatory diseases), and 96.8 (considered preventable).

Causes of deaths - premature mortality, 2016 to 2020, Standardised Mortality Ratios (SMR)

Sprotbrough



Source: Office for Health Improvement and Disparities, produced from Office for National Statistics (ONS) data, Office for Health Improvement and Disparities Annual Mortality Extracts (based on Office for National Statistics source data)

Figure 31. Causes of premature deaths (2016-2020) in the Sprotbrough ward (ONS, 2021)

When looking at all ages, deaths from cancer (95.4 versus 116.1 SMR), circulatory disease (78.4 versus 109.3 SMR), coronary heart disease (73.8 versus 121.8 SMR), stroke (84.3 versus 100.3 SMR), and respiratory diseases (69.2 versus 125.3 SMR) are all lower in the Sprotbrough ward than for Doncaster overall (Office for Health Improvement and Disparities, 2020). Furthermore, the ratio of deaths from all causes, circulatory disease, coronary heart disease, and respiratory disease in Sprotbrough ward are all significantly better than across England (see Figure below). Cadeby, Hickleton, and Hampole MSOA has reported ratios of 81.1 (all causes), 87.6 (all cancer), 85.3 (circulatory disease), 97.5 (coronary heart disease), 64.5 (stroke), and 82.4 (respiratory diseases).

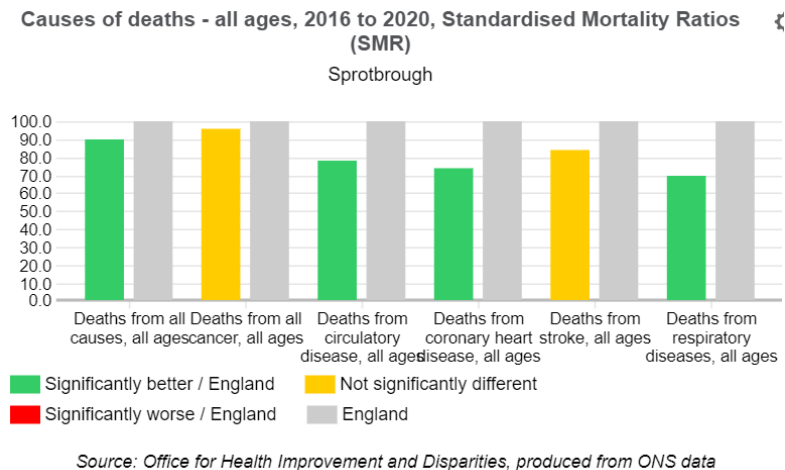


Figure 32. Causes of all-ages deaths (2016-2020) in the Sprotbrough ward (ONS, 2021)

Hospital Admissions

The overall rate of emergency hospital admissions in children under 5 years old in Sprotbrough ward has been reported at 78.6 per 1000 children, lower than that across Doncaster (91.1 per 1000) and England (140.7 per 1000) (figure below; Hospital Episode Statistics NHS Digital, 2021). Similarly, the rate of emergency admissions for injuries in children under 5 years old are also lower in Sprotbrough ward than in Doncaster overall, at 65.0 per 10,000 and 99.0 per 10,000, respectively. However, the rate of emergency hospital admissions for children under 15 years old in Sprotbrough

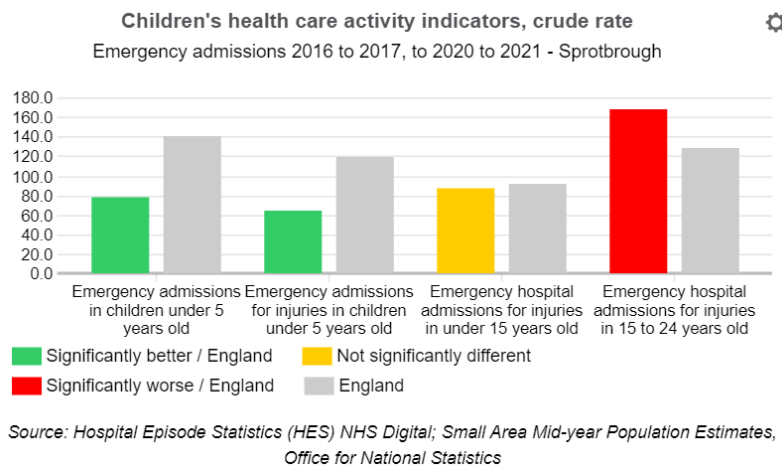


Figure 33. Children's hospital admissions in the Sprotbrough ward (ONS, 2021)

(87.4 per 10,000) are similar to that across Doncaster (88.8 per 10,000), Furthermore, the rate of emergency hospital admissions for injuries in 15–24-year-olds is higher in Sprotbrough (168.5 per 10,000) than across Doncaster (161.6 per 10,000).

In Cadeby, Hickleton, and Hampole MSOA, the overall rate of emergency hospital admissions is 81.4 in children under 5 years old. Emergency admissions for injuries is 78.9 for children under 5 years old, 101.7 for children under 15 years old, and 183.8 for 15-24 years old.

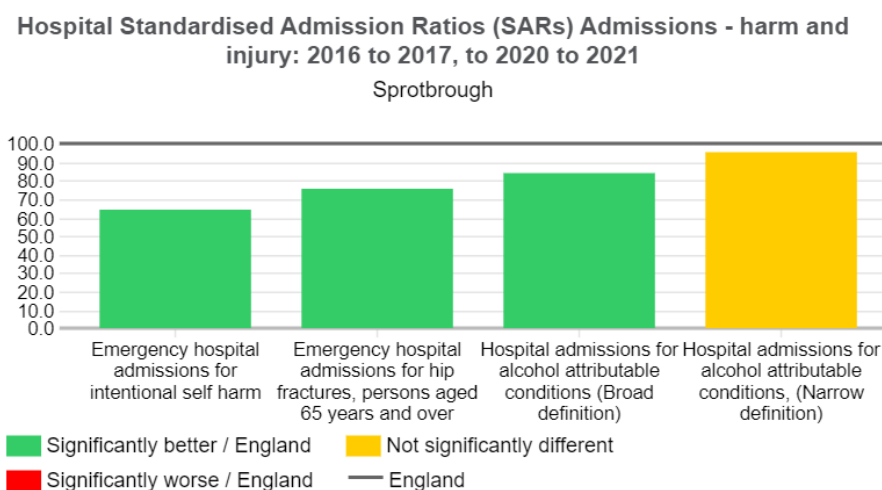


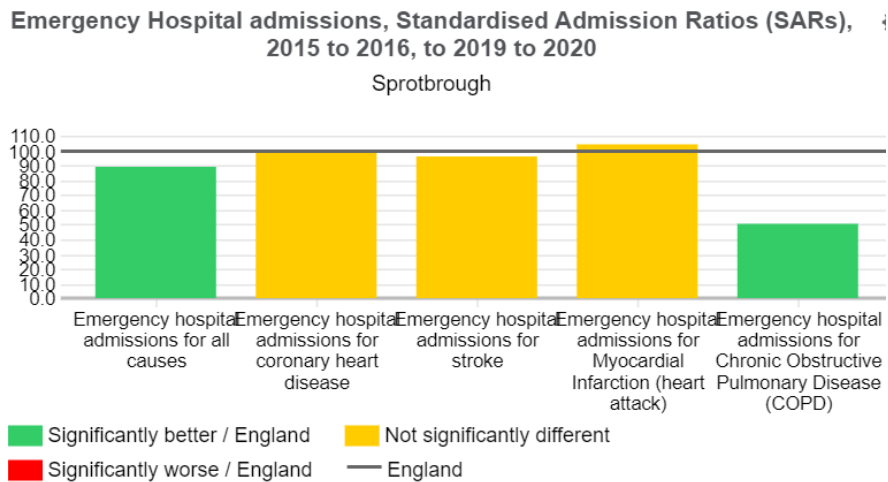
Figure 34. Hospital admissions in the Sprotbrough ward (ONS, 2021)

Similarly, standardised admission ratios for emergency hospital admissions for intentional self-harm (64.4 versus 121.6), hip fractures in persons aged 65 years and over (75.2 versus 106.7), broad definition alcohol attributable conditions (83.6 versus 112.7) and narrow definition alcohol attributable conditions (95.1 versus 125.1) are all lower in the Sprotbrough ward than in Doncaster overall (Hospital Episode Statistics, 2021). Excluding narrow definition alcohol attributable conditions, these admissions are also all significantly better for the Sprotbrough ward than across England (see figure below).

In Cadeby, Hickleton, and Hampole MSOA, standardised admission ratios for emergency hospital admissions are 77.8 for intentional self-harm, 71.5 for hip fractures (65 years and over), 92.1 for broad definition alcohol attributable conditions, and 107.0 for narrow definition alcohol attributable conditions.

The standardised admission ratio for all-causes emergency hospital admissions in Sprotbrough ward is lower than that across Doncaster, at 88.6 and 112.5 respectively (Hospital Episode Statistics, 2020). When looking at specific causes, hospital admissions for coronary heart disease (98.9 versus 114.6), stroke (96.3 versus 105.7), myocardial infarction (104.2 versus 115.9) and chronic obstructive pulmonary disease (50.0 versus 124.2) are all lower in Sprotbrough ward than across Doncaster. All-cause admissions and COPD admissions are also both significantly better for Sprotbrough ward than across England (see Figure below).

In Cadeby, Hickleton, and Hampole MSOA, standardised admission ratios are 90.3 for all-causes emergency hospital admissions, 120.8 for coronary heart disease, 65.4 for stroke, 124.5 for myocardial infarction, and 61.2 for COPD.



Source: Hospital Episode Statistics (HES) NHS Digital

Figure 35. Emergency hospital admissions in the Sprotbrough ward (ONS, 2021)

Alcohol

Data on emergency hospital admissions for alcohol-attributable conditions can be found in the previous section. The figure below shows the rate of alcohol-specific admissions per 1000 residents across the North of Doncaster by LSOA. The red line illustrates the overall rate across Doncaster at 43.7 per 1000 residents.

For Brodsworth LSOA, the LSOA encompassing Hooton Pagnell, Brodsworth and Pickburn, and Clayton, an alcohol specific admissions rate of 39.6 per 1000 residents has been reported. This is below the rate across Doncaster.

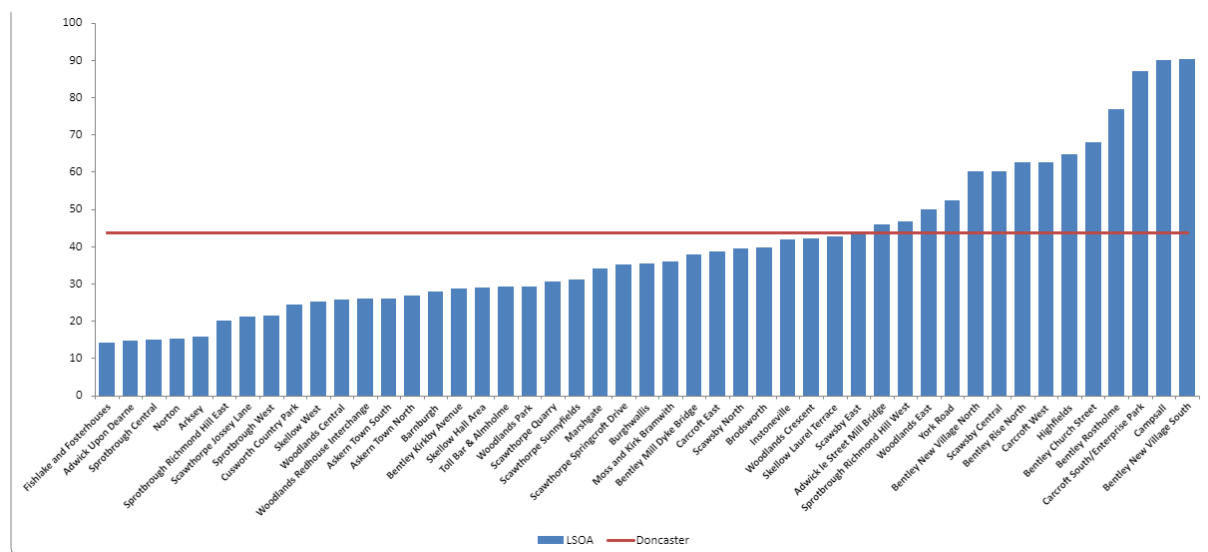


Figure 36. Alcohol specific admissions per 1000 population (April 2016-July 2023) by area

The figure below shows alcohol specific admissions by North Primary Care Network (PCN) practice. However, it is difficult to directly attribute any of these cases to residents in Hooton Pagnell, Brodsworth and Pickburn, and Clayton as there are no PCN practices in any of these areas. However, the nearest two practices to these communities are The Ransome Practice (Woodside Surgery) and Great North Medical Group (Princess Medical Centre). The Ransome Practice has reported an alcohol specific admission rate of 37.5 per 1000 population and the Great North Medical Group has reported a rate of 40.2 per 1000 population.

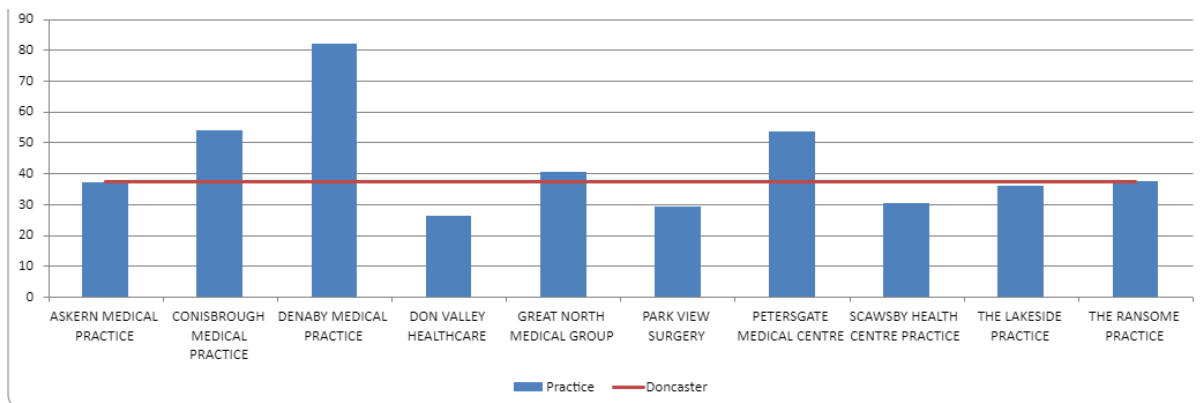


Figure 37. Alcohol specific admissions per 1000 population (April 2016-July 2023) by North PCN practice

Smoking

In the Sprotbrough ward, the prevalence of residents smoking on a regular or occasional basis at 15 years of age has been reported at 10.7% (ONS, 2014); this is higher than the prevalence across Doncaster (8.9%). Smoking status, as self-reported by patients during registration, has also been reported at a GP practice level. As above, as there are no PCN practices in Hooton Pagnell, Brodsworth and Pickburn, and Clayton, data for The Ransome Practice (Woodside Surgery) and Great North Medical Group (Princess Medical Centre) have been reported instead.

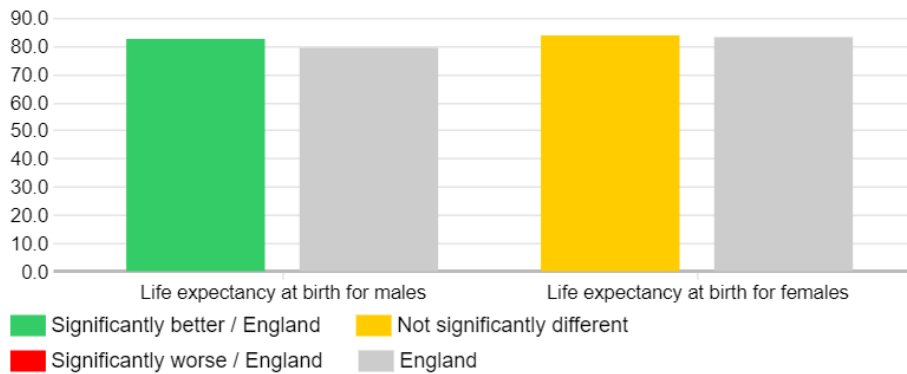
The Ransome Practice have reported smoking prevalence at 22.51% of patients aged 15 years and over; this is higher than the prevalence across Doncaster of 17.96% and the 18.56% reported across Doncaster North PCN (NHS England Quality and Outcomes Framework 2022-2023). Great North Medical Group have reported a slightly lower patient smoking prevalence at 19.81% of patients aged 15 years and over, but this is still higher than the prevalence for Doncaster.

Life Expectancy

Life expectancy at birth in the Sprotbrough ward is 83.25 for females and 82.4 for men (The Office for Health Improvement and Disparities, 2020). This compares with 77.9 years for males and 81.3 years for females across Doncaster. Life expectancy for men is higher in Sprotbrough ward than in any other ward in Doncaster (Fairness and Wellbeing Commission) and is significantly better than for England overall (The Office for Health Improvement and Disparities, 2020), as shown in the Figure below.

In Cadeby, Hickleton, and Hampole MSOA, life expectancy at birth is 84.6 for females and 81.0 for men.

Life expectancy, compared to England. Life expectancy, 2016 to 2020, years
Sprotbrough



Source: The Office for Health Improvement and Disparities analysis of ONS death registration data and mid-year population estimates.

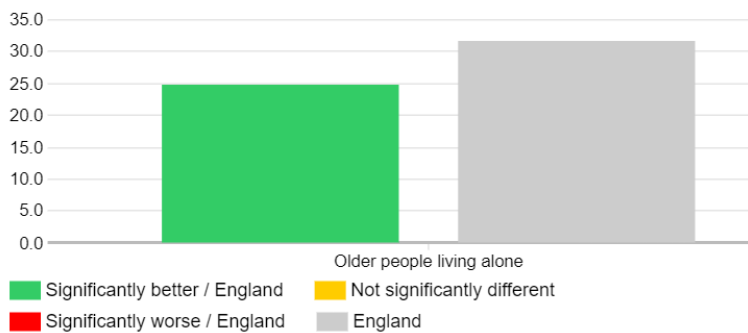
Figure 38. Life expectancy at birth in the Sprotbrough ward (ONS, 2020)

Loneliness and Isolation

Across the Sprotbrough ward, 24.8% of older people (65 years and over) live alone, significantly less than the 31.6% reported for Doncaster overall and 31.5% for England (ONS, 2011; see figure below). This is despite the comparatively high proportion of over 50's living in the area.

In Cadeby, Hickleton, and Hampole MSOA, 26.2% of older people live alone.

Older people living alone, %, 2011
Sprotbrough



Source: ONS, Census 2011

Figure 39. Older people living alone in Sprotbrough ward (ONS, 2011)

Vulnerable Victims (Stronger Communities)

The number of vulnerable victims supported across North of Doncaster in Quarter 1 of 2023-2024 was 22. None of these occurred within the Sprotbrough ward (City of Doncaster Council, 2023). Domestic abuse crime rate for 2022 in Sprotbrough ward was 10.9 per 1000 population.

Physical Activity

It is known that Doncaster has more physically inactive adults, and fewer physically active adults than the national average (Get Doncaster Moving/Sport England, 2019). Across Doncaster, 29.1% of adults are physically inactive and this is higher than across England (25.4%). The number of physically active adults in Doncaster is lower than the England rate, at 59.0% and 62.3% respectively.

The Mosaic map below shows levels of inactive households across Doncaster. Data is mapped to LSOA, however wards are shown and labelled for orientation. The Sprotbrough ward (circled on the map below) has a low to moderate number of inactive households, with the number of inactive households higher in the North of the ward where Hooton Pagnell, Brodsworth, Pickburn, and Clayton are located.

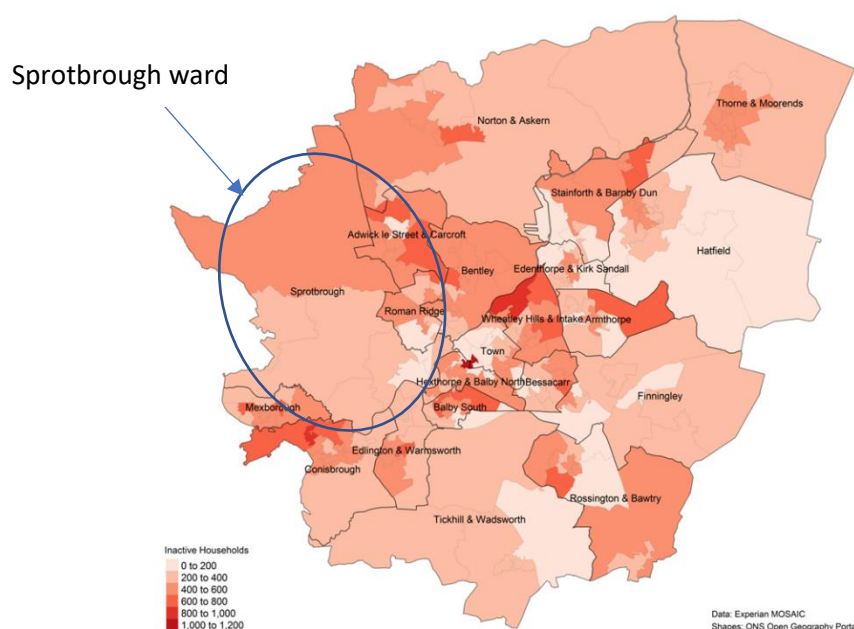


Figure 40. Mosaic map of inactive households by ward across Doncaster

The Pupil Lifestyle Survey 2022 revealed that less than half (43%) of pupils in the Sprotbrough ward walked to school, compared with 47% across Doncaster. All pupils taking part in the survey from the Sprotbrough ward reported that they had taken part in physical activities in the last 7 days, with 61% taking part in physical activity on 5 days or more; this is higher than reported for Doncaster overall (97% and 49%, respectively). Sprotbrough ward also reported the highest percentage of pupils who enjoyed physical activity across all the wards (92%), which may contribute to the high levels of activity in the area.

Active Travel

According to the National Census data (ONS, 2021), 60.7% of residents aged 16 years and over in employment in Sprotbrough ward drive to work by car or van. This is slightly higher than the 57.9% reported for Doncaster. Only 3.6% walk to work, whilst 0.9% cycle; both are lower than reported for Doncaster (7.1% and 1.8%, respectively).

At a community level, similarly low levels of active travel to work are observed. In Hooton Pagnell, 50.5% of residents travel to their workplace by car or van, whilst 3.0% walk. No residents reported that they cycle to work. In Brodsworth and Pickburn, 62.2% drive by car or van, 4.9% walk and 1.1% cycle to work. In Clayton, 58.1% of residents drive to work by car or van, 3.5% walk, and 1.2% cycle. The relatively low levels of active travel reflect the rural locations of these communities.

Green Spaces and Parks

Brodsworth and Pickburn has one green space identified. However, no playing fields or greenspaces have been identified in Hooton Pagnell or Clayton communities.



Community Information

Population

Population Size

The all-age population size across Sprotbrough ward is 10, 824, with 51.4% female and 48.6% male (ONS, 2021). The crude rate for population density across Sprotbrough ward is 138.5, lower than the 550.7 reported for Doncaster overall (ONS small area population estimates (SAPE), 2020). At a community level, the population size (rounded to the nearest 100 people) of Hooton Pagnell is 190 (52.4% female and 47.6% male), Brodsworth and Pickburn is 3000 (53.2% female and 46.8% male), and Clayton is 200 (49.0% female and 51.0% male) (ONS, 2021).

Age Profile

In the Sprotbrough ward, half (50.7%) of the population are aged 50 years and over, compared with 39.5% across Doncaster (ONS, 2021). Only 15.9% of the population of the Sprotbrough ward comprises of under 19's, compared with 18.7% across Doncaster (ONS, 2021). This indicates an ageing population in Sprotbrough.

At a community level, in Hooton Pagnell, 57.3% of the population are 50 years or over and 14.0% of the population are under 19 years old (ONS, 2021). The most common age groups are 45-49-year-olds and 55–59-year-olds (13.9% each). In Brodsworth and Pickburn, 43.5% of the population are 50 years or over and 23.1% of the population are under 19 years old (ONS, 2021). The most common age group are 50-54-year-olds (7.5%). In Clayton, 66.3% of the population are 50 years or over and 10.0% of the population are under 19 years old (ONS, 2021). The most common age group are also 55–59-year-olds (11.6%).

The infographics below display the population breakdown by age band and sex in the Sprotbrough ward, and individual communities of Hooton Pagnell, Brodsworth and Pickburn, and Clayton.

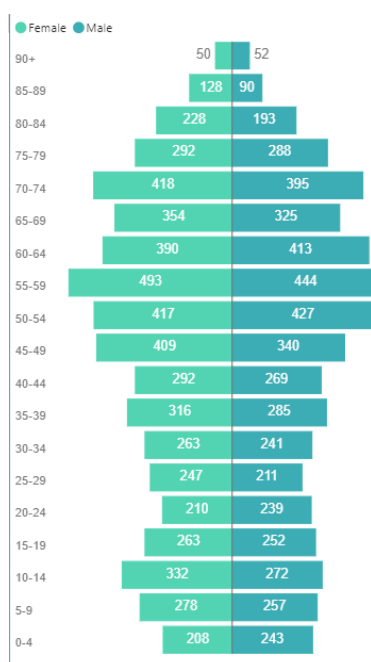


Figure 41. Population by age band and sex in the Sprotbrough ward

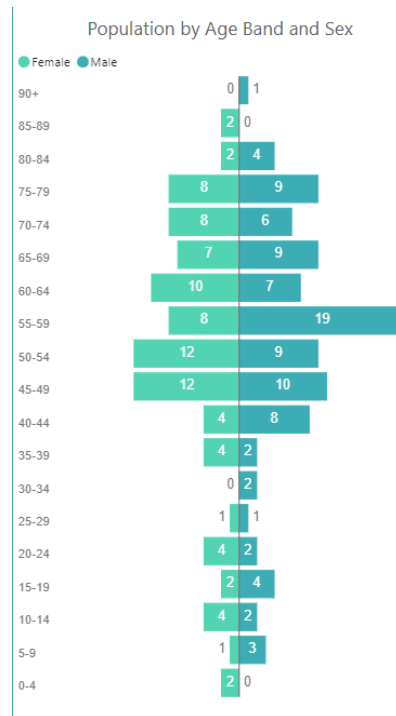


Figure 42. Population by age band and sex in Hooton Pagnell

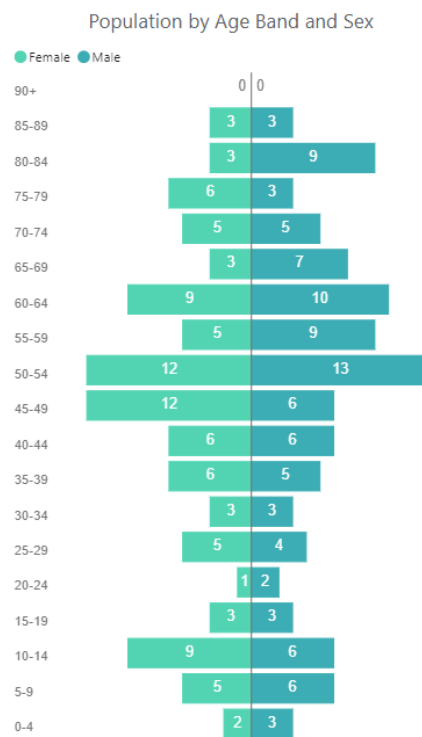


Figure 43. Population by age band and sex in Brodsworth and Pickburn

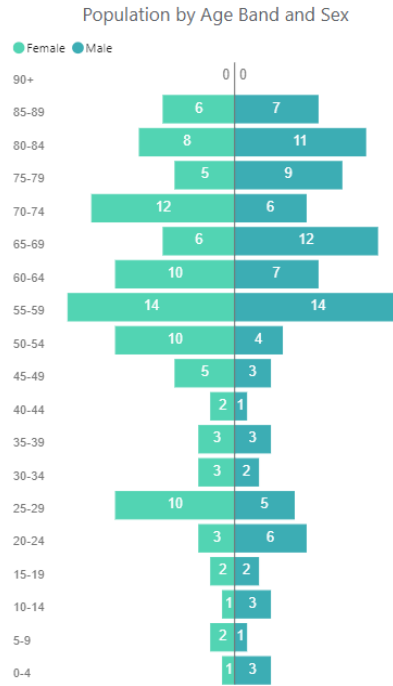
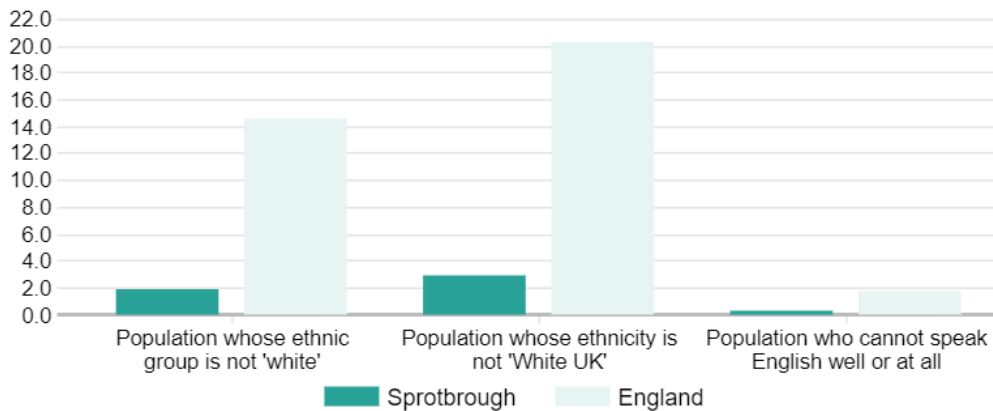


Figure 44. Population by age band and sex in Clayton

Ethnicity and Language

The population of Sprotbrough ward whose ethnic group is not 'white UK' (2.8%) is considerably lower than that of Doncaster as a whole (8.2%) (ONS, 2011; see Figure below). The most common ethnic group in Sprotbrough is white (97.5%), mixed or multiple ethnic groups (1.1%), followed by Asian, Asian British or Asian Welsh (0.9%), Black, Black British, Black Welsh, Caribbean, or African (0.3%), and other ethnic group (0.2%).

Ethnicity and language, %, 2011.



Source: Office for National Statistics (ONS) Census 2011

Figure 45. Ethnicity and language in Sprotbrough ward (ONS, 2011)

Most (97.1%) residents in the Sprotbrough ward were born in the UK, above that reported for Doncaster (Figure below; ONS, 2021).

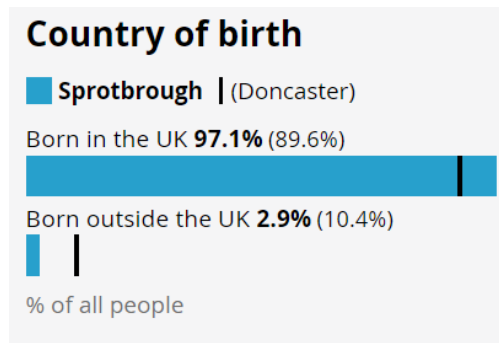


Figure 46. Country of birth of residents in the Sprotbrough Ward (ONS, 2021)

Similarly high levels are seen in Hooton Pagnell (96.8%), Brodsworth and Pickburn (97.0%), and Clayton (99.0%).

In Hooton Pagnell, 94.7% of residents are white, 1.1% are Asian, Asian British or Asian Welsh, 2.7% are mixed or multiple ethnic groups, 0.5% are Black, Black British, Black Welsh, Caribbean, or African, and 1.1% are other ethnic groups (ONS, 2021). In Brodsworth and Pickburn, 96.6% of residents are white, 1.0% are Asian, Asian British or Asian Welsh, 1.9% are mixed or multiple ethnic groups, 0.1% are Black, Black British, Black Welsh, Caribbean, or African, and 0.4% are other ethnic groups (ONS, 2021). In Clayton, 98.5% of residents are white, 0.5% are mixed or multiple ethnic groups, 0.5% are Black, Black British, Black Welsh, Caribbean, or African, and 0.5% are other ethnic groups (ONS, 2021).

Just 0.3% of the population of Sprotbrough ward cannot speak English well or at all, compared with 1.2% across Doncaster (figure above). The majority (97%) of the population in the Sprotbrough ward speak English as their primary language. The other languages spoken as primary language by residents in the Sprotbrough ward are displayed in the figure below.

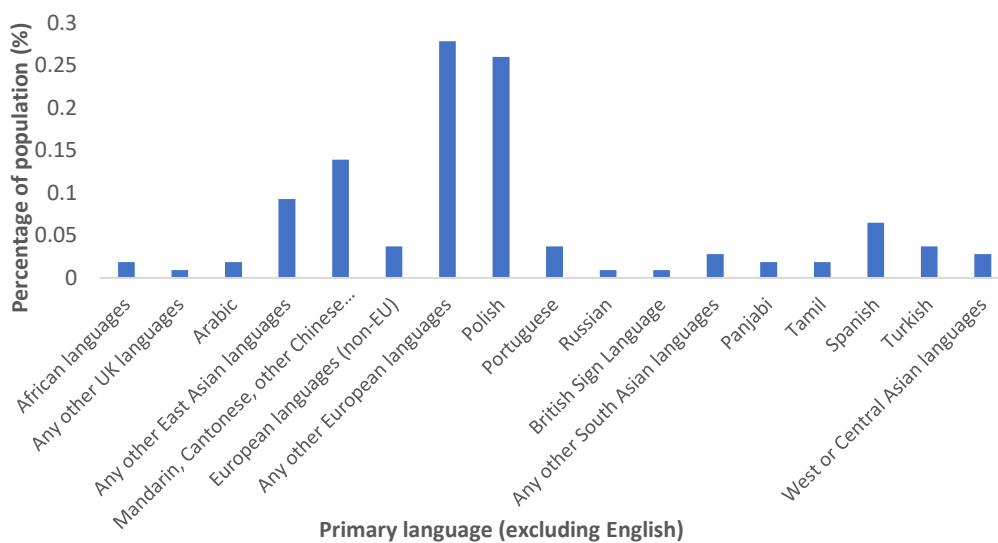


Figure 47. Primary languages of residents in the Sprotbrough ward, excluding English

Over half (59%) of residents in Sprotbrough ward consider their religion to be Christian, followed by no religion (35%) (ONS, 2021). Other religions reported include Buddhist (0.1%), Hindu (0.1%), Muslim (0.4%), Sikh (0.1%) and other religion (0.4%).

In Hooton Pagnell, Christianity is the most common religion (59.9%), followed by no religion (29.9%), Muslim (1.6%), Hindu (0.5%), and other religion (0.5%).

In Brodsworth, Christianity is the most common religion (47.2%), closely followed by no religion (45.7%), Muslim (0.4%), Buddhist (0.4%), Sikh (0.3%), Hindu (0.2%), and other religion (0.2%).

In Clayton, Christianity is the most common religion (68.2%), followed by no religion (25.8%), and Buddhist (0.5%).

Housing

According to the ONS (2021), 98.6% of accommodation in the Sprotbrough ward is comprised of whole houses or bungalows, with just 1.2% flats, maisonettes, or apartments (figure below; ONS, 2021). The remaining 0.1% of accommodation are caravans or other mobile/temporary structures.

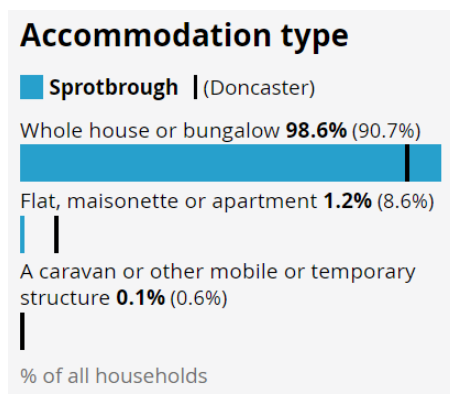


Figure 48. Accommodation type in Sprotbrough ward (ONS, 2021)

In Hooton Pagnell, 97.6% of accommodation are whole houses or bungalows and 2.4% are flats, maisonettes, or apartments. There are no caravans or other mobile or temporary structures. In Brodsworth and Pickburn, 92.4% of accommodation are whole houses or bungalows, 7.5% are flats, maisonettes, or apartments and 0.1% are caravans, or other mobile or temporary structures. In Clayton, 98.9% of accommodation are whole houses or bungalows and 1.1% are flats, maisonettes, or apartments.

Over half (50.5%) of housing is owned outright in Sprotbrough ward, higher than the 33.6% reported for Doncaster. A third (32.6%) is owned with a mortgage or loan or shared ownership (29.6% for Doncaster), 13.7% is private rented or lived in rent free (19.7% for Doncaster), and only 3.2% are socially rented (17.0% for Doncaster). The figure below displays the distribution of household tenure for Hooton Pagnell, Brodsworth and Pickburn, and Clayton. A larger percentage of housing is owned outright in Hooton Pagnell (35.3%) and Clayton (41.1%) than across Doncaster, but these are still lower than that for the Sprotbrough ward. There is a considerably higher percentage of social housing in Brodsworth and Pickburn (24.6%) than in Sprotbrough ward, Hooton Pagnell (2.4%), Clayton (9.5%), and across Doncaster (17.0%).

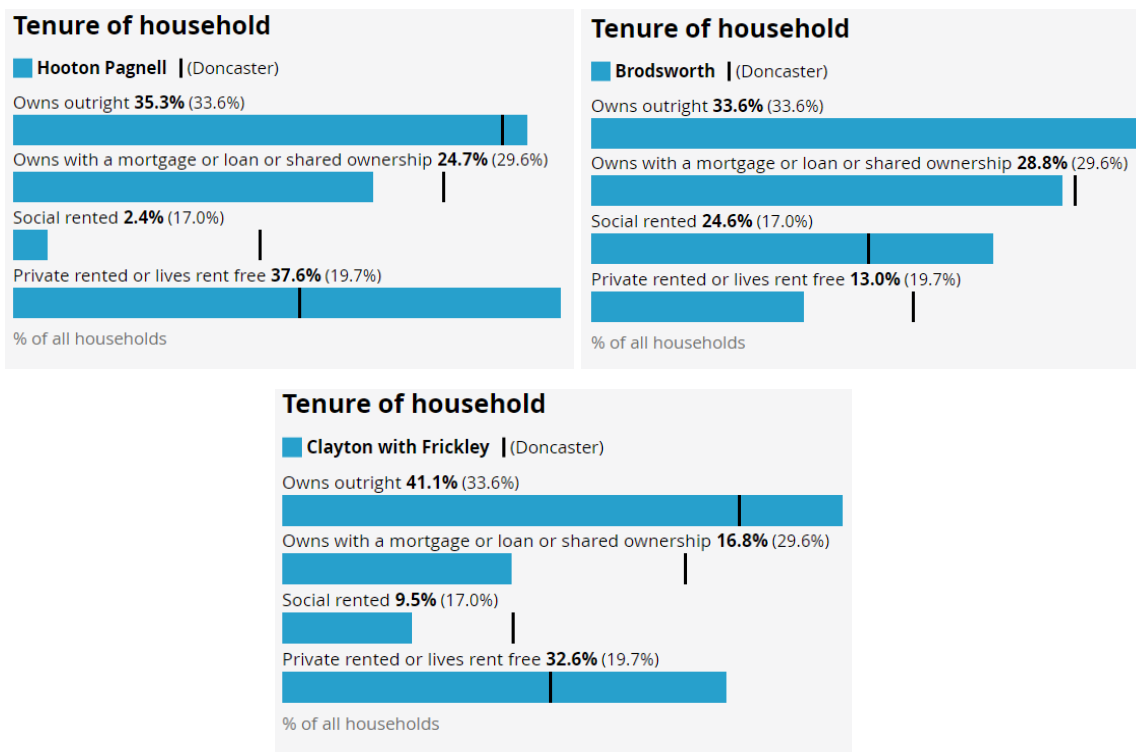


Figure 49. Tenure of households in Hooton Pagnell, Brodsworth and Pickburn, and Clayton

St Leger Housing

There are no St Leger Housing managed properties in Hooton Pagnell and Brodsworth and Pickburn. There are 8 St Leger Housing properties in Clayton; five 1-bed bungalows, one 2-bed house, and two 3-bed houses. Rent arrears for these properties totalled £202 in 2022/2023.

Household Characteristics

The percentage of residents living in overcrowded houses is lower in Sprotbrough ward than across Doncaster as a whole, at 1.5% and 4.5%, respectively. Sprotbrough ward also has the lowest percentage of overcrowded houses of all the wards in Doncaster (Power BI, 2011)

In Sprotbrough ward, residents most commonly live in households comprising of 2 individuals (42.2%) and this is greater than the percentage across Doncaster (Figure below; ONS, 2021). This is followed by 1 individual households (26%), which is lower than across Doncaster. The percentage of households comprising of 4 or more people in Sprotbrough ward is 16%. The majority of households (71.3%) are single family households.

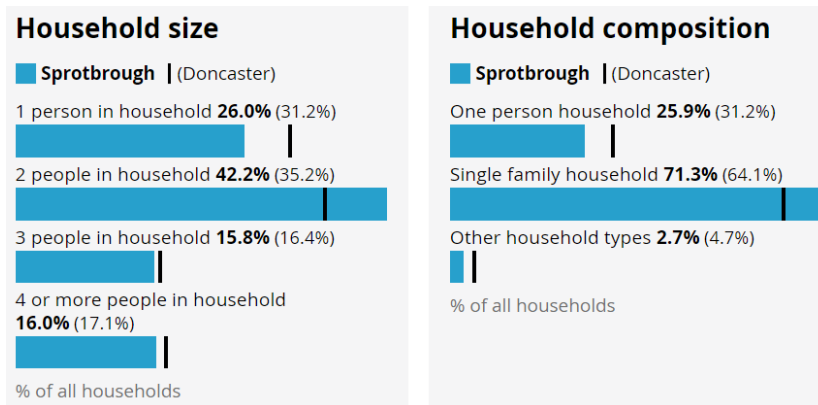


Figure 50. Household size and composition in the Sprotbrough Ward (ONS, 2021)

In Hooton Pagnell, 73.3% of residents live in single family households (see figure below). 45.9% of residents live in households comprising of 2 people, followed by 24.7% in 1 person households. 10.6% of residents live in households with 4 or more people, which is lower than the 17.1% reported across Doncaster.

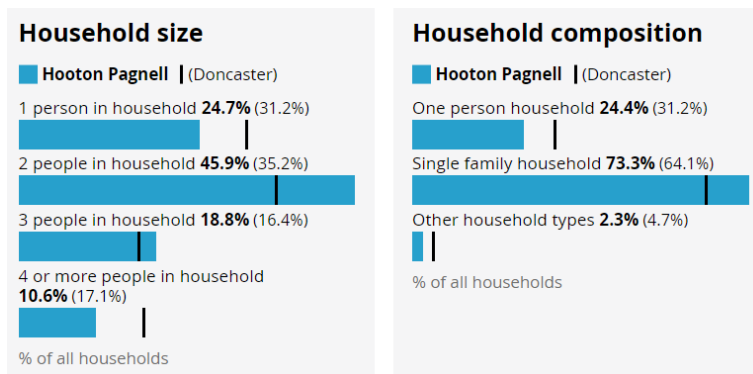


Figure 51. Household size and composition in Hooton Pagnell (ONS, 2021)

In Brodsworth and Pickburn, household size and composition are similar to that across Doncaster (see figure below). Two-thirds of households (65.6%) are single family households, with 34.6% of residents living in 2-person households.

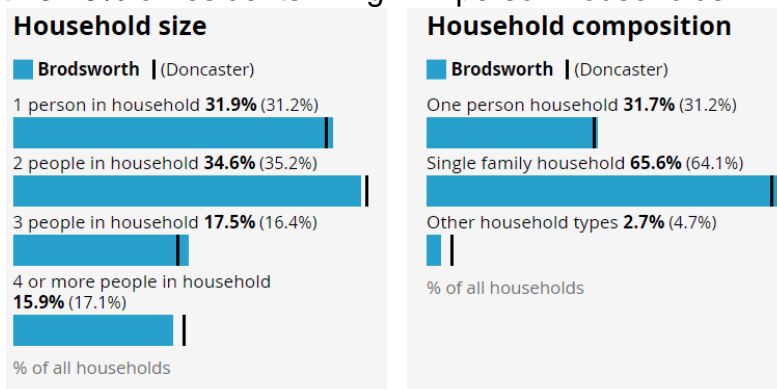


Figure 52. Household size and composition in the Brodsworth and Pickburn (ONS, 2021)

In Clayton, the percentage of residents living in single family households is greater than that of Doncaster at 73.4% (see figure below); these are most frequently 2-person households (49.5%). The percentage of residents living alone (24.5%) is below that of Doncaster.

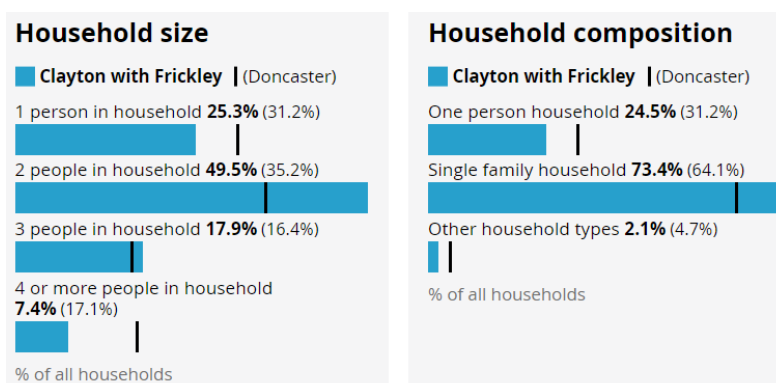


Figure 53. Household size and composition in Clayton (ONS, 2021)

Crime/ Antisocial Behaviour

Of the 1528 cases of early intervention, antisocial behaviour (ASB), hate crime and low-level crime issues identified and managed in North Doncaster in Quarter 1 of 2023-2024, 74 of these occurred in the Sprotbrough ward (City of Doncaster Council, 2023). South Yorkshire Police reported 515 anti-social behaviour incidents in North Doncaster in the 1st quarter of 2023-2024, of which 64 occurred in the Sprotbrough ward (City of Doncaster Council, 2023).

Pupils from the Sprotbrough ward taking part in the Pupil Lifestyle Survey 2022 reported low levels of having seen knives being used as a threat (10%), which is below the overall percentage reported for Doncaster of 23% and lower than any other ward.

Community Insight

Appreciative Inquiry

The Well Doncaster Team undertake an Appreciative Inquiry within communities to gather insight to support co-designing action plans with the community. The AI questions are structured to pull on the successes of the past and present, to seek new potentials and possibilities and build on those through the Dream and Design stages.

The Appreciative Inquiry will include the following steps:

1. **Discovery** – This will involve engagement with the residents to find out what is working well in the community. Responses will be themed to allow priorities of the community to be established.
2. **Dream** – Residents and key stakeholders will be invited to attend an initial workshop to discuss what ideas they have for their community and how these will meet the priorities highlighted in the discovery phase.
3. **Design** – All attendees are invited back for a second workshop to develop an action plan to direct work for the community.
4. **Deliver** – A collaborative way of working and investing resources in working towards to the actions from the previous phase.

The Well Doncaster Team undertake Appreciative Inquiry throughout the year to ensure the voice of the community is heard and understood. Following the COVID-19 pandemic, this is more important than ever. As Armstrong (2020) demonstrates, through appropriate questioning, appreciative inquiry can help us move away from focusing on what is wrong, to capitalising on what is right to help strengthen and restructure communities. As communities look for the positives in their future, we hold up a mirror that shows them where the positive future lies –with them and their community.

Whilst the Sprotbrough ward is not one of the main priority areas for Well Doncaster, Appreciative Inquiry has been undertaken within its communities. At this time, responses have been combined with other non-priority communities to create an ‘other North communities’ analysis. As the number of Appreciative Inquiries increases, it may be possible in the future to undertake specific theming for each community within the Sprotbrough ward. The table below outlines the key themes and sub themes identified during the thematic analysis of Appreciative Inquiry undertaken for the ‘other North communities’ areas during 2023.

Table 3. Key themes, subthemes, and supporting quotations from Appreciative Inquiry in ‘other North communities’

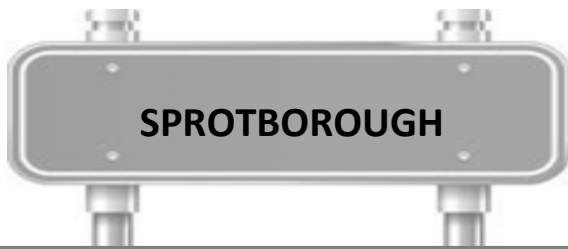
Theme	Sub theme	Quotes
People	Community spirit	OC002 – ‘no antisocial behaviour’ OC003 – ‘there is a good sense of community. Things to do if you want to get involved in community’ OC006 - ‘Good community spirit and nice to be a part of’ OC005 – ‘It’s a lovely community’ OC007 – ‘close kit and close community’
	Social support	OC001 – ‘Good councillors...Having kind people in community helps me feel positive’ OC003 – ‘chose the area to be near to family’ OC008 – ‘my wife has lived here all her life, we integrate well and live among nice people’

Importance of health	<p>Physical health</p> <p>Mental health and wellbeing</p> <p>Facilitators of health and wellbeing</p>	<p>OC008 - 'being mobile and active (is important)'</p> <p>OC004 - 'important to have good mental health and improve it as well as physical health... Being able to be well to do my job also matters'</p> <p>OC001 – 'managing anxiety well is important'</p> <p>OC003 – 'mental health (is important), as won't be able to do daily tasks without it'</p> <p>OC009 – 'My children being happy and content means I am happy and content'</p> <p>OC010 – 'To have a good quality of life and be able to support younger generations of family e.g. grandchildren'</p> <p>OC011 – 'don't want own or other people's mental health to deteriorate'</p> <p>OC002 – 'Having good family – supportive...green spaces'</p> <p>OC003 – 'family is important'</p> <p>OC006 – 'my friends and family being around me'</p> <p>OC008 – 'being mobile and active. Outdoors is a great place to be'</p> <p>OC011 – 'Making sure outside'</p>
Perceptions of place	<p>Perceived safety</p> <p>Appearance of place</p>	<p>OC002 – 'Quiet place, no anti-social behaviour'</p> <p>OC010 – 'No antisocial behaviour...Feel safe.'</p> <p>OC001 – 'quiet area...I prefer a quiet environment in general'</p> <p>OC005 – 'It's a lovely community. We look after our properties and keep things tidy'</p> <p>OC006 - 'Scenic, friendly, nice park and fields for the kids to play'</p> <p>OC007 - 'It's a nice village'</p>

Local assets and amenities	Green space	OC008 – ‘outdoors is a great place to be OC010 – ‘Local park and green space.’ OC006 - ‘Nice park and fields for the kids to play’
	Facilities	OC007 – ‘We used the tea rooms that was very popular around here and we would like to see it re opened on the future.’ OC010 – ‘Local shops and nice pubs for a meal...Good GP practice’
	Events and groups	OC007 – ‘Events like this are lovely’ OC011 – ‘involved in two CICs...important for communities to have free access to sessions in the cost of living crisis’. OC009 – ‘Friends of Arksey Park new group been going just over a year they need support with funding to help them with their plans for the community.’
Accessibility	Transport and transport links	OC008 – ‘Bus is only one every hour but we do use it and its reliable’ OC010 – ‘ideal for those who drive’
	Access to amenities/facilities	OC008 – ‘we use Bentley high street for shopping’ OC010 – ‘having access is good for freedom’ OC011 – ‘people are happy to travel to city centre’

Doncaster Talks

In 2019, Doncaster Talks undertook insight across the borough. Responses were separated into wards and thematically analysed. Across the Sprotbrough ward, 73 responses were recorded (0.66% of the ward) and the main themes on what people liked about the area, what could be improved, and what the borough should focus on are displayed in the table below:

**Like**

- Sense of community – nice people and nice place to live
- Access to countryside and open spaces
- Good variety of local amenities

Improve

- Reduce speeding and general road safety
- Improve environment and access to Greenspace
- Shops/restaurants and independent shops

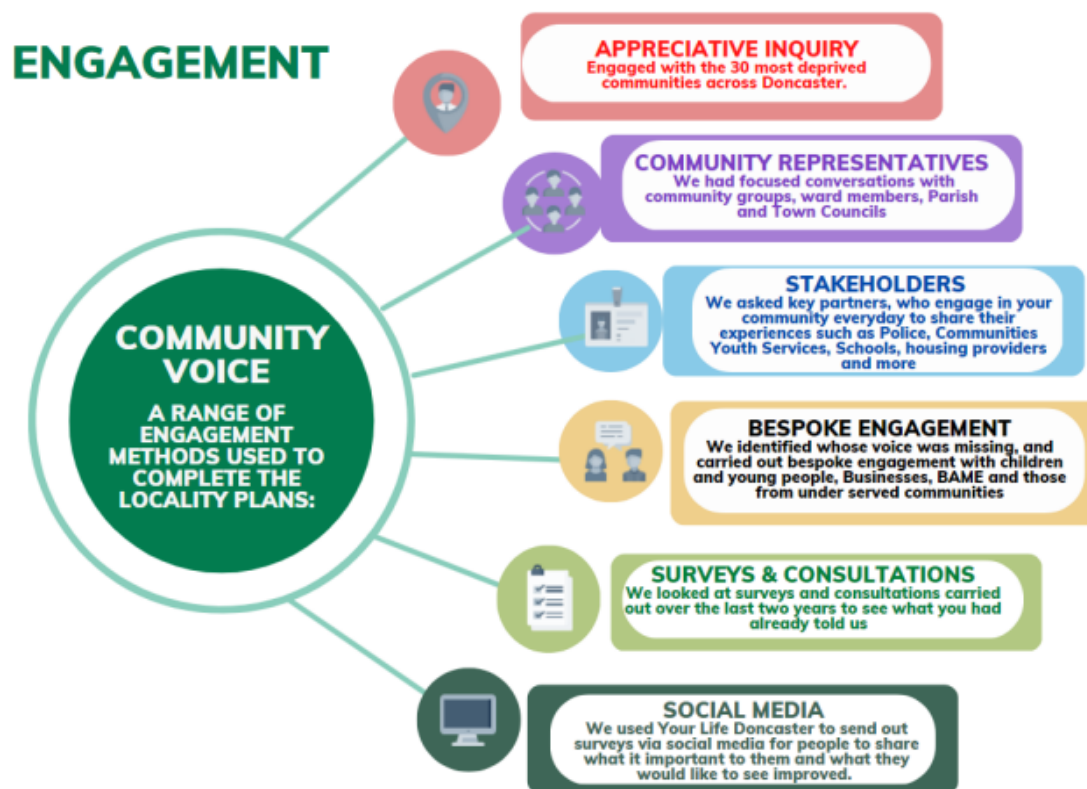
Focus

- Town centre developments – increasing footfall – shops/empty units
- Improve road management/maintenance
- General support for social care services – young people and families

Locality Plan

Locality plans look at how we can together to strengthen communities and improve the lives and opportunities for residents living there.

The North Locality Plan has been developed in conjunction with residents and sets out what will be done to improve the community over the next 12 months. Communities were engaged with through several different ways:



The 2023-24 Locality Plan for the North Area outlines a set of priorities and can be viewed using the following link: [North Locality Plan 2023 - Draft Version.pdf \(windows.net\)](#)

Community Investment

In the North locality, the sum of investment in community organisations was £804,160, as of 21st November 2023 (Power BI, 2023). The main source of grants has been 'Community Wealth Builder Support', followed by 'VCFS Fund' and 'Active Communities Grant'.

The top priority for investment in the North was 'enable positive lifestyle choices including weight management, smoking cessation, physical activity, drug and alcohol misuse', followed by 'children and young people provision', 'support physical activity', and 'community spirit'.

In the Sprotbrough ward, investment totalled £104,840, as of 21st November 2023. Community organisations receiving support include Cre8ive You CIC, Don Gorge Community Group, The Hygiene Bank, Jackdaw Wood CIC, Clayton-cum-Frickley

County-Women's Association, Sprotbrough Community Library, St Mary's Church, Community Education Links, Sprotbrough Cricket Club, Friends of Cusworth Park, and Families Together. The main source of grants has been 'Community Wealth Builder Support', followed by 'VCFS Fund', and 'Community Wealth Builder Grants'.

The top priority for investment in the Sprotbrough ward was 'enable positive lifestyle choices including weight management, smoking cessation, physical activity, drug and alcohol misuse', followed by 'increasing sense of community spirit' and 'children and young people provision'.

Appendix

Well Doncaster Annual reports

Well Doncaster Approach: <https://youtu.be/e1RKOZoGI10>

More information about how Well Doncaster has been meeting outcomes and objectives can be found in past and present annual report:

<https://welldoncaster.wordpress.com>

Census data 2021

The census is undertaken by the Office for National Statistics every 10 years and gives us a picture of all the people and households in England and Wales.

[Build a custom area profile - Census 2021, ONS](#)

[Census Maps - Census 2021 data interactive, ONS](#)

Public Health Data

Fingertips

This is a new fingertips profile that uses data from Local Health an existing PHE data tool. Local Health is a collection of quality assured health information presented for small geographical areas. By presenting data for small areas, Local Health provides evidence of inequalities within local areas. It supports targeted interventions to reduce such inequalities.

Local Health contains indicators related to:

- Population and demographic factors
- Wider determinants of health
- Health outcomes

It presents data for middle super output areas (MSOA), electoral wards, clinical commissioning groups (CCG), local authorities, and England as a whole.

Please note, as the Local Health tool was designed to allow users to map small area data, a mapping option has not been provided in this profile.

<https://fingertips.phe.org.uk/profile/local-health/data#page/0>

[Local Health - Public Health England - Reports: get a dashboard on a custom area](#)

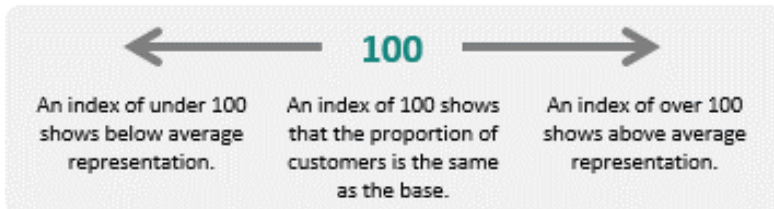
Acorn profiles

Wellbeing Acorn segments the population into 4 groups (Health Challenges; At Risk; Caution; Healthy) and 25 types describing the health and wellbeing attributes of each postcode across the country. By analysing significant social and health related behaviour, it provides precise information and an in depth understanding of upstream issues affected by current lifestyle traits

INTERPRETING THE REPORT

The Wellbeing Acorn profile report helps you understand the underlying demographics, lifestyle and health attributes of your customers and service users by comparing their Wellbeing Acorn profile to a base (e.g. UK population, area or other customer groups).

INDEX



The Wellbeing Acorn Profile contains 12 variables that are indicators of Disability or Infirmity in the population and 9 variables related to unhealthy Behaviours. The average score measured against the base profile of Yorkshire and the Humber is 100. A value above 100 indicates that the area population is overrepresented for this characteristic, below 100 the value is less than the average.

Get Doncaster Moving survey

<https://getdoncastermoving.org/uploads/behavioural-insight-phase-one-summary-report.pdf?v=1644581925>

Mosaic data

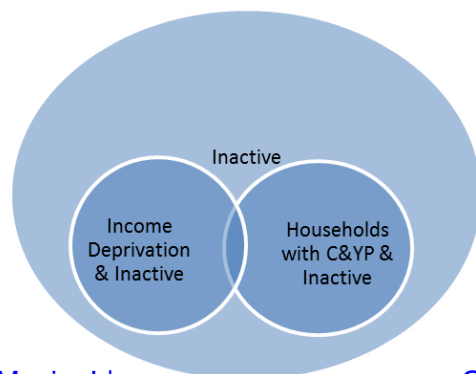
Mosaic Public Sector classifies the UK population into one of 66 types and 15 groups through a detailed and accurate understanding of each citizen's demographics, lifestyles, behaviours, and location.

The Physically Inactive Population of Doncaster

The MOSAIC types who “Do not exercise” and “Do not take part in Sport” were searched and three priority groups have been identified through work with strategic partners as part of the development of Doncaster's Physical Activity Strategy. The three priority groups are:

- The Inactive
- Families with children and young people
- People living in income deprivation

These groups are cross-referenced against the inactivity list allowing for the identification of MOSAIC types which are both likely to be inactive and living in deprivation as well as inactive and from households with children and young people.



Link to the Get Doncaster Moving strategy; [Let's Get Moving! | Doncaster Moving](#)

[Get](#)

Power BI – Joint Strategic Needs Assessment

The Joint Strategic Needs Assessment (JSNA) is a process that identifies the current and future health and wellbeing needs of a local population. The dashboards show information about the employment, health, and wellbeing of people in Doncaster. We use this information to inform our policies and strategies to improve the lives of everyone in the Doncaster area.

[Joint Strategic Needs Assessments - Team Doncaster](#)

