

Mexborough Community Profile

Well Doncaster



Well Doncaster

Community Led Health and Wealth

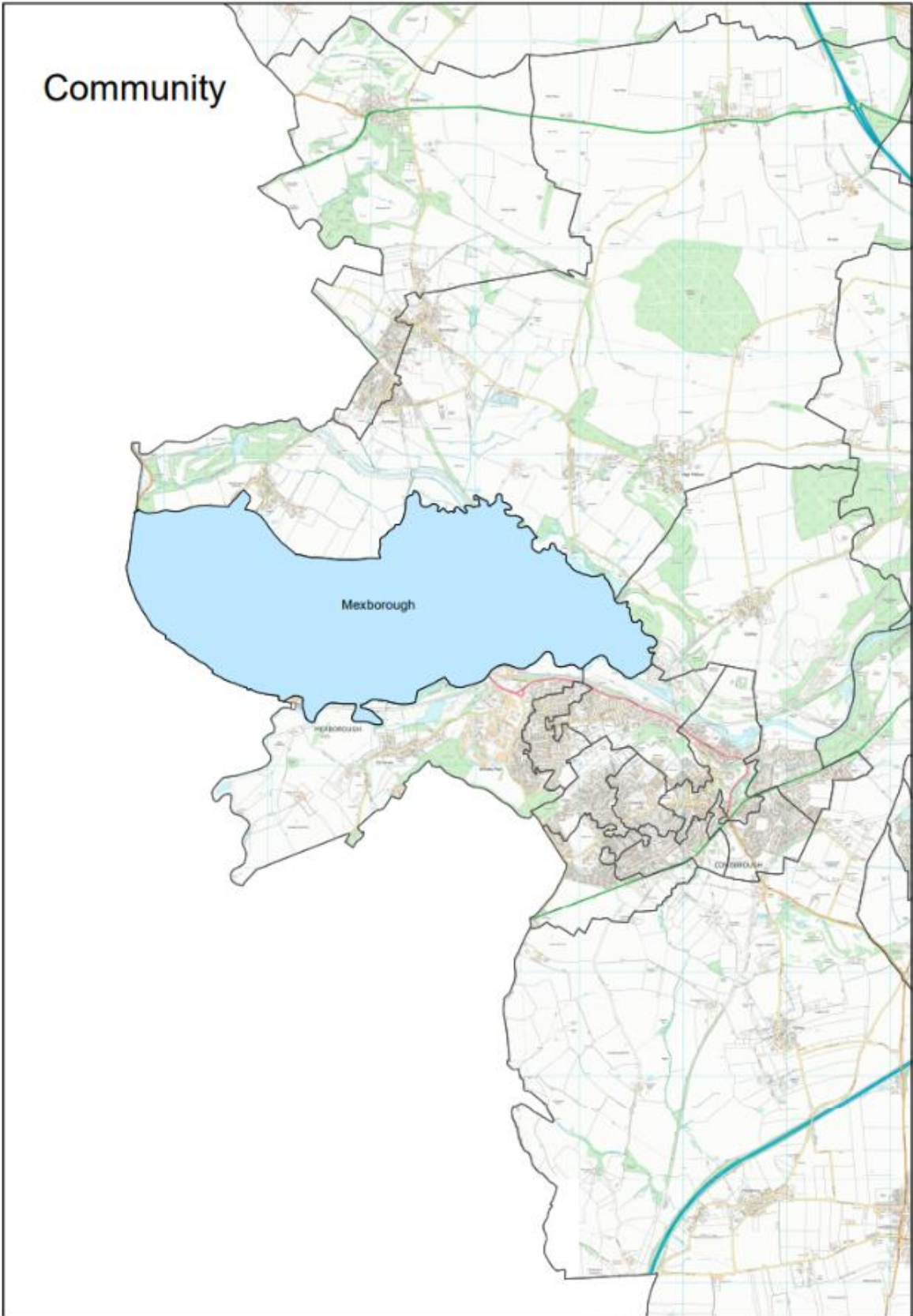
Empowering people in Doncaster to live better, healthier, and happier lives.

www.welldoncaster.uk

Well Doncaster
**Community
Wealth Builder**

Well Doncaster
Be Well





Contents	
This Report.....	5
One page Summary	7
Key Health Priorities	7
Assets	8
Asset Maps	8
Assets in the Community	12
Population Health Management.....	12
Ward Members	19
Health and Wealth.....	20
Deprivation.....	20
Wealth Inequalities.....	22
Fuel Poverty.....	22
Food Poverty	22
Employment.....	24
Citizens Advice Doncaster Borough	26
Childhood Development.....	28
Childhood Obesity	28
Pupil Lifestyle Survey	28
Learner Outcomes	29
Health Inequalities	29
Long Term Health Conditions	29
Alcohol.....	30
Smoking.....	31
Life Expectancy	33
Loneliness and isolation	33
Vulnerable Victims	34
Physical activity	35
Community Information	36
Population	36
Population Size.....	36
Age Profile	36
Ethnicity and Language	36

Housing.....	37
St Leger Housing	37
Crime/ Antisocial behaviour (ASB).....	38
Community Insight.....	39
Appreciative Inquiry	39
Doncaster Talks	45
Locality plans	46
Community Investment	46
Appendix	47
Well Doncaster Annual reports	47
Mosaic Data	47
Acorn profiles	47
Public Health Data	48
Interactive Map	48

This Report

This report focuses on Mexborough, which is in the South of the City. The report begins with a one-page summary outlining key information and priorities for the area. This document builds on the initial conversations with communities which took place in 2021, including ward members, community organisations, faith groups, residents and other organisations who work in the area. Communities' knowledge of their own areas enables them to identify their strengths and the assets on which they can build on. This document is shared with the intention of supporting those conversations and sharing information that might not be readily available to local people.



29% of residents own their houses outright



7.5% of residents are unemployed



Large proportions of households with inactive children and young people



31.2% of Children in reception and 26.2% are obese at year 6



23% of residents are living in income deprivation



Respiratory Diseases are the leading cause of death & highest in Doncaster (186.2 per 100.0)

One page Summary

Mexborough is an electoral ward within the South area of the city. Mexborough has a population of 15,600. There are similar proportions of working age adults to the national average, but larger proportions of older people. The majority of the community identify as White British.

There are estimated to be 7,000 households, most of which are terraced or semi-detached properties. Most residents socially rent their properties. Population density is significantly high in the area.

Poverty and deprivation are significant challenges in Mexborough. Unemployment and long-term unemployment figures are higher than national rates amongst working-age adults. The impact of poverty is felt across the life course with significantly high numbers of children and older people living in poverty. Households also struggle to heat their homes, thus, increasing the prevalence of fuel poverty. A significantly high number of children are overweight or obese in Mexborough and this is likely to be a significant contributing factor of poor child development and lower educational levels.

People in Mexborough have a lower life expectancy and live more years in poor health than the average person. There are also high levels of feeling low, self-harm and depression. The proportion of people who report their health as bad or very bad or who have a long-term limiting illness is significantly higher than figures reported for Doncaster and England. A large percentage of residents live with conditions related to poor lifestyle choices, including smoking, which increases the risk of chronic obstructive pulmonary disease (COPD), lung cancer and emphysema. There are significantly higher rates of emergency hospital admissions which suggests residents are struggling to self-manage their health conditions and the mortality rate from all causes are significantly higher than the rest of the borough. The leading cause of death is respiratory disease, and this figure is the highest in the borough. Deaths from cancer, circulatory disease and coronary heart disease are all significantly higher than Doncaster.

There are low educational levels, coupled with a high proportion of people in what are traditionally low skill, low pay occupations. There are streets in Mexborough that experience severe deprivation. There is a significantly higher proportion of older people living alone in the area than in Doncaster and England.

Key Health Priorities

- Poverty is a key issue particularly amongst children and income deprivation
- Significantly high mortality rates. Highest in the City for deaths from respiratory disease.
- Low school attainment, particularly at secondary school
- Poor healthy life expectancy - it would be important to consider the risk factors around the development of respiratory and circulatory conditions such as high levels of smoking, alcohol consumption and obesity.
- Inactive deprived household's levels are high in Mexborough, likely contributing to high levels of Childhood obesity.
- High smoking rates

Assets

Asset Maps

The maps below show the different type of assets found across Mexborough. These have been separated into Community, business and health assets.

It is recognised that work is needed in the community to expand the understanding of who, how and what is accessed in the area. Greater knowledge of the identity of each community/ward will allow a more appropriate and effective response to community needs. Mexborough remains a priority area for South Doncaster and ongoing work will continue to support it.

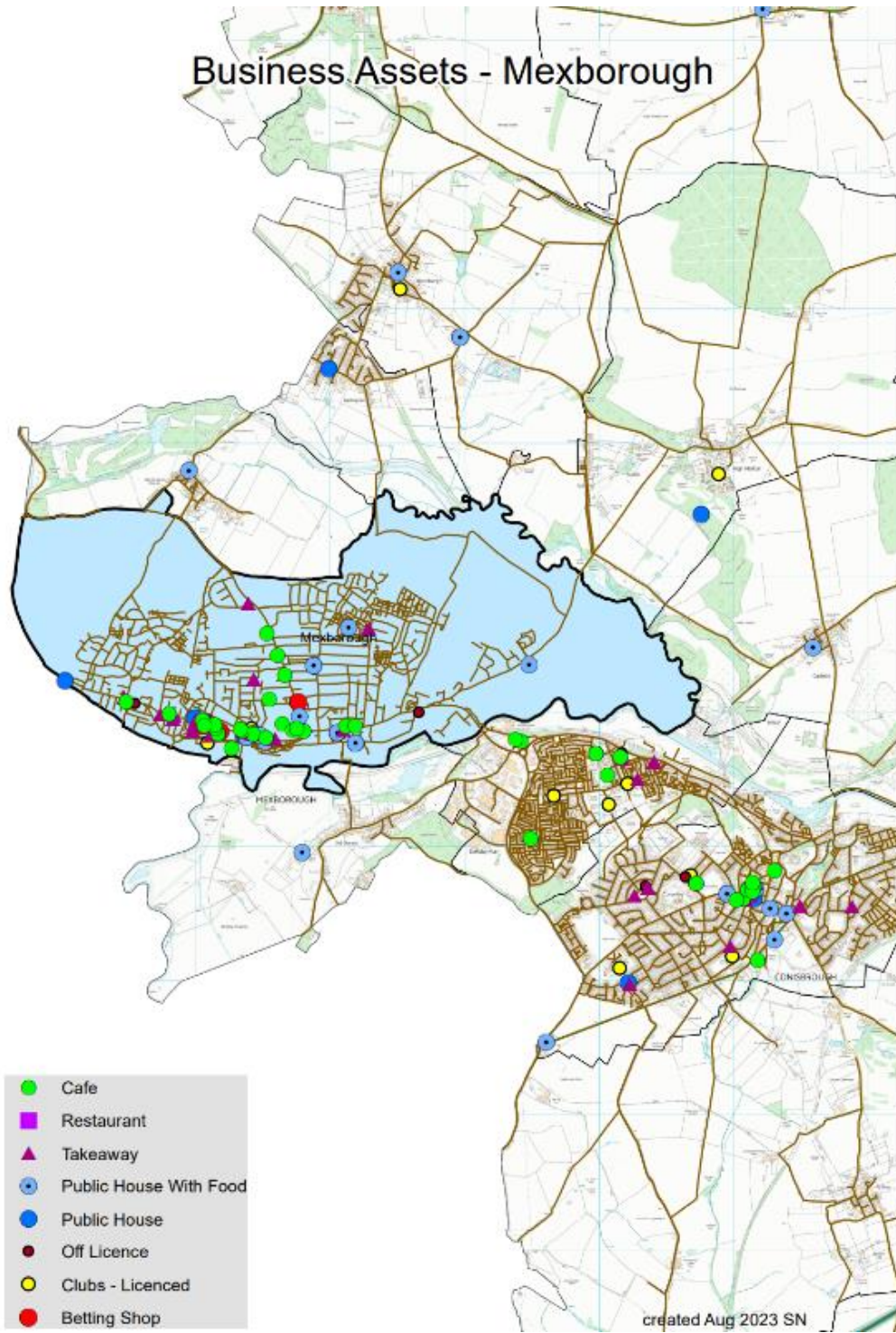


Figure 1. Business Assets Mexborough

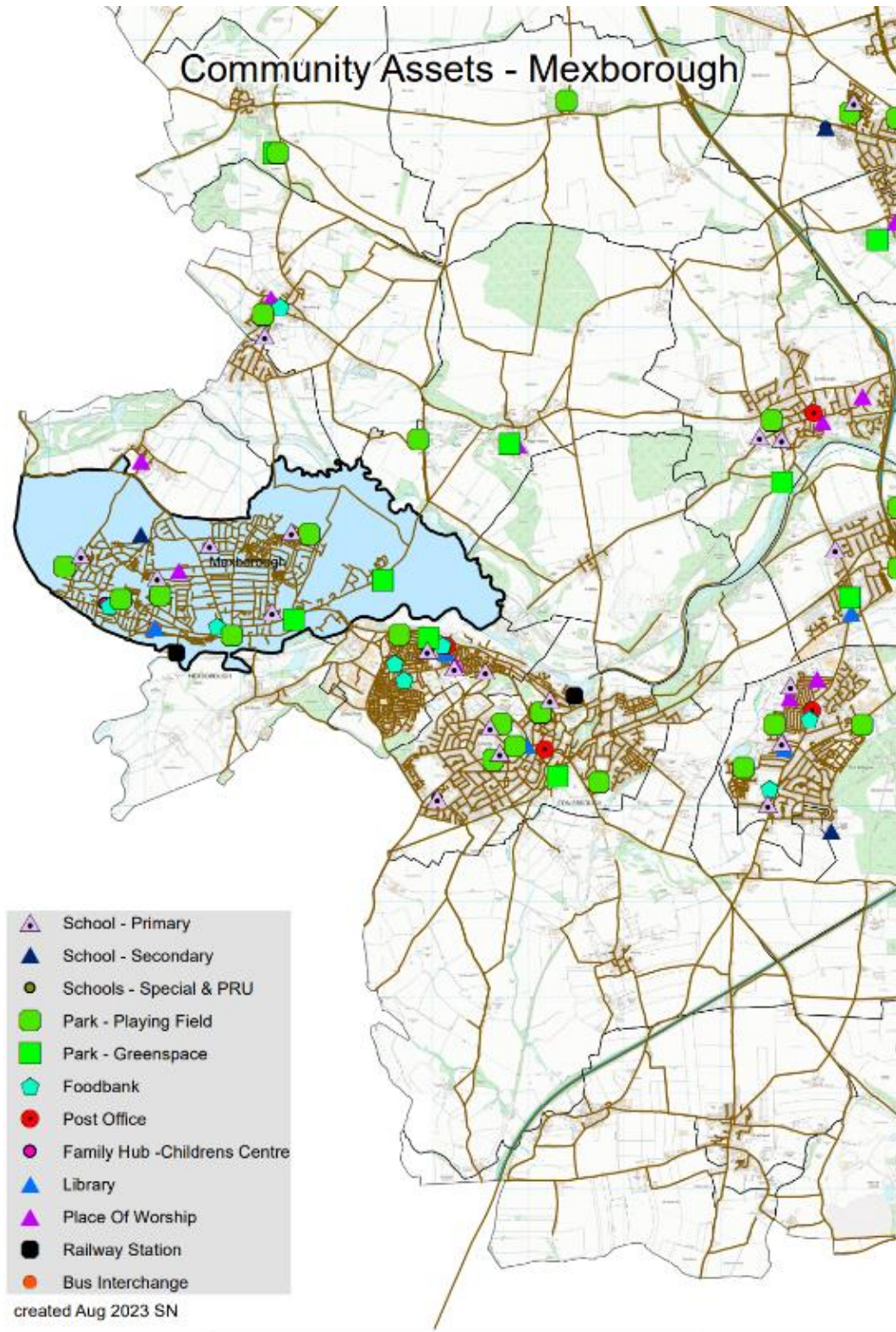


Figure 2. Community Assets Mexborough

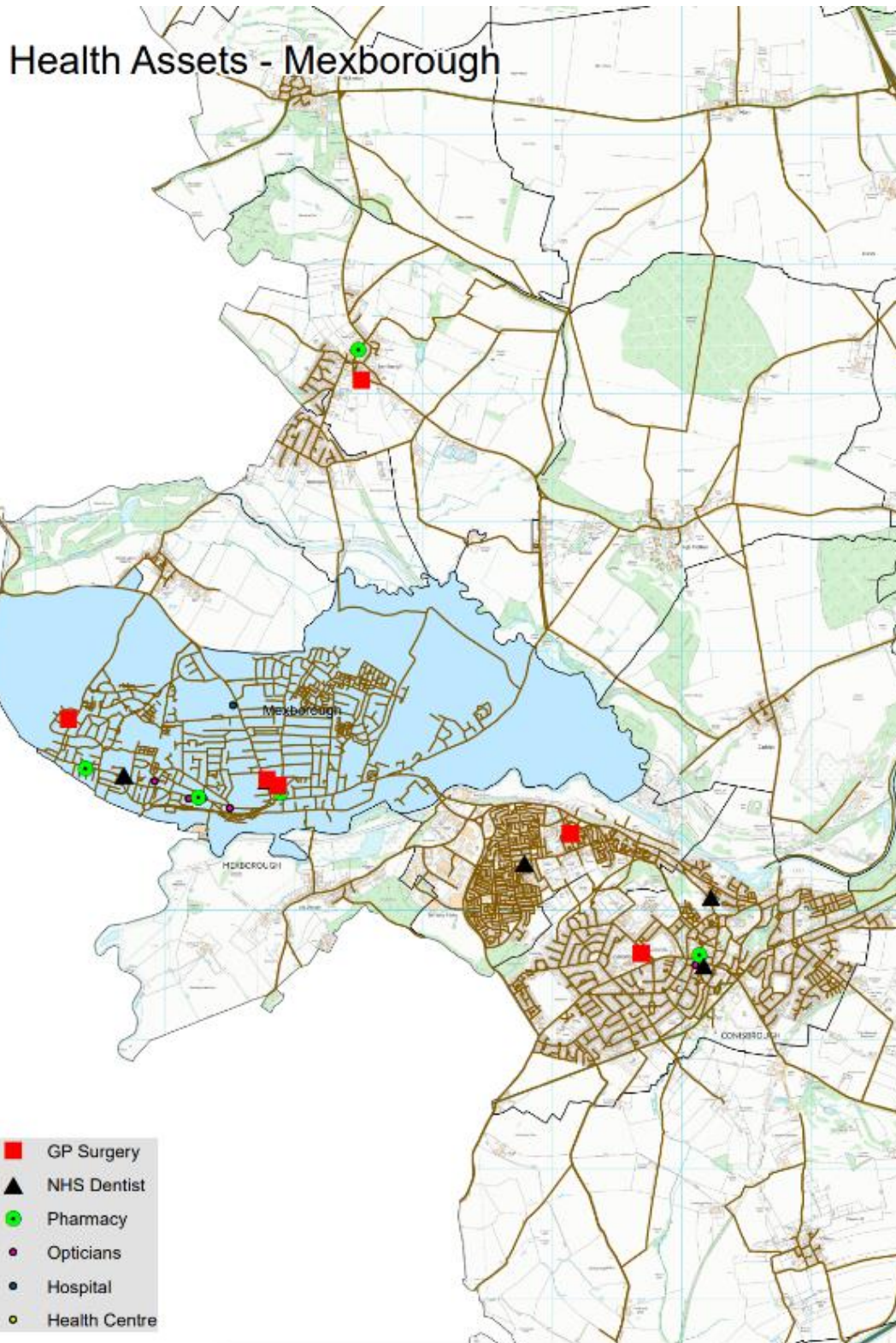
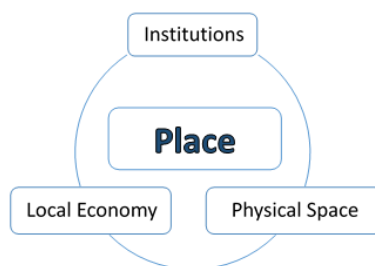


Figure 3. Health Assets Mexborough

Assets in the Community
Population Health Management



Institutions (Schools/colleges etc.)	Physical space (Parks, carparks etc.)	Local Economy (Local profit Businesses)
<p>Schools:</p> <ul style="list-style-type: none"> • New Pasture Primary School • Mexborough School • Windhill Primary School • Montagu Academy • Highwoods Academy - Provision for disability support to children Parenting courses National curriculum Ofsted inspected Qualified trained staff Term time only At Highwoods Early Years Centre we offer 15 hours a week for funded 2,3,4-year-olds. We are committed to provide equality of opportunities for all children and families, regardless of each individual background. We aim to work with families and consult the families, should the needs arise to include signposting and working in partnership with outside agencies 	<p>Green space:</p> <ul style="list-style-type: none"> • Football Pitch • Pitt Street Park • Castle Hill Park • Athletic Field • Rocket/Clayfield • Schofield Street Field • Park road Field • Kings Road Field • Highwood road Field • Thomas Street • Manvers Park <p>Communal halls & Centre:</p> <ul style="list-style-type: none"> • St Ledge Derwent hall- Tenants Club and Bing meet twice per week • Bhatia Centre – Runs over 55 bingo, SMILE • Highwoods Community Base - Identify cost effective ways in which to meet the needs of the local community children living in the area of Highwood estate • The Willows Community Centre – sessions run in the centre such as WI <p>Other:</p> <ul style="list-style-type: none"> • Dearne Valley Leisure Centre 	<p>Food & Beverage:</p> <ul style="list-style-type: none"> • Weatherspoons • Thorntons Mexborough <p>Shops/ Supermarkets:</p> <ul style="list-style-type: none"> • Farmfoods Mexborough • Lidl • Factory Foods • Heron Food • Poundland (recently selling frozen foods) • Indoor Market (various stalls) • Outdoor Market (Various Stalls) <p>Fitness & Gym facilities:</p> <ul style="list-style-type: none"> • Dearne Leisure centre • Grafters Ironworks Gym • ATF Training • The Personal Training Room • SB Promotions <p>Care homes and day centres</p> <ul style="list-style-type: none"> • Roman Court • Swallow Wood • Clarence House

Institutions (Schools/colleges etc.)	Physical space (Parks, carparks etc.)	Local Economy (Local profit Businesses)
<p>and organisations to help the development of each individual child within our setting. 01709 587327</p> <ul style="list-style-type: none"> • St Johns C Of E Infants & Junior School • The Laurel Academy • Mexborough Park Road Infants School <p>Health</p> <ul style="list-style-type: none"> • Montagu Hospital • Mexborough New Surgery • Mexborough Health Centre • Mexborough Medical Practice • Mexborough Dental Surgery • Genix Healthcare Dental Clinic (Mexborough) • Secret Smile Orthodontics <p>Emergency Services</p> <ul style="list-style-type: none"> • Police Station <p>Other:</p> <ul style="list-style-type: none"> • Royal British Legion - Branch 43 Helena Street, Mexborough, S64 9PF 07958239405 Royal British Legion • Mexborough Family Hub • Aspire 	<ul style="list-style-type: none"> • Cosy Cinema • Cricket Ground • Tennis Pitch 	<ul style="list-style-type: none"> • The Bhatia Centre • Mexborough Day Centre <p>Other:</p> <ul style="list-style-type: none"> • Card Factory Mexborough • B & M Mexborough • Yorkshire Bank • Lloyds Bank • Specsavers Mexborough • Herbert Brown Mexborough • Travis Perkins Mexborough • Pettits Mexborough • Superdrug Mexborough • BrightHouse Mexborough • Coral Mexborough • Barnsley Building Society Mexborough • Tofs Mexborough • Halifax • NatWest

Institutions (Schools/colleges etc.)	Physical space (Parks, car parks etc.)	Local Economy (Local profit Businesses)
<ul style="list-style-type: none"> • Library – Runs sessions such as Mexborough craft, neighbourhood meetings, B: friend, Mind, We Create • Playgroup • Scouts • Beavers • Mexborough Business Centre – Runs Dementia Café <p>Religious:</p> <ul style="list-style-type: none"> • St John's Mexborough • New Oxford Road Church • Blessed English Martyrs R C Church • Mexborough Spiritualist Church • Mexborough Life Church • Baptist Church – run sessions such as Ava Lunch, Mexborough Activities Cafe 		



INDIVIDUALS (Key Individuals within the community and why)	ASSOCIATIONS Local Groups/Clubs	STORIES (Good news stories)
	Support:	Stories

INDIVIDUALS (Key Individuals within the community and why)	ASSOCIATIONS Local Groups/Clubs	STORIES (Good news stories)
<ul style="list-style-type: none"> • Angela Cooper – Active Dearne. • Resident and community engager. Works for active dearne. • Eileen Cooper – Eileen now retired from Neighbourhood watch • Jill Arkley – Links4Youth, connected with the younger generation. Ex ward member • Joanne Arkley - Links4Youth, connected with the younger generation. • Sarah West - Links4Youth, connected with the younger generation. • Adam Lynch – Love Mexborough • Denise Lancaster – Baptist Church • Billy Whitehead – Mind over matter founder. Licenced coach • Ryan Matthews – Mind over 	<ul style="list-style-type: none"> • Mind Over Matter – mental health support and delivers sport and other physical activities at own venue. Run football, Zumba, and other sessions. • Mexborough Family Hub – Supporting families, babies, and parents, MFH run the following sessions, Sensory Fun, Baby Chatter Baby Play, Baby Massage, growing friends, Food bank, First Friends, Book Chatter Book Play, Stop Smoking Pregnancy, Breast Start. Karen.seaman@doncaster.gov.uk • Food Aware – Providing food to those in poverty. Foodbank runs every Friday 10-12pm at the family hub. Ran by Sean Gibbons sean.gobbons@doncaster.gov.uk • Links4Youth – Support for young people with various activity sessions running Monday-Thursday at Highwoods community base by Joanne Arkley • B: Friend – Elderly social club, runs from Mexborough Library every Friday 2.30pm-4.30pm info@letsbfriends.org.uk • Fibromyalgia Peer groups – every 2nd Friday of month at Mexborough surgery ran by well Doncaster and PCN 	<p>E Cooper – More physical activity since lockdown <i>... After being in my bungalow for two weeks, I have been walking for once a day around the area where I live for a short 15 minutes and doing a few exercises to get my body fitter than it has been. I fill my time by reading, emailing, doing jigsaws, sewing masks for Angela and others, watching Tv, and especially love watching Netflix films.</i></p> <p><i>Multiple good news stories from food aware which is shared weekly on the Facebook page</i> https://www.facebook.com/mexboroughfoodbank/</p>

INDIVIDUALS (Key Individuals within the community and why)	ASSOCIATIONS Local Groups/Clubs	STORIES (Good news stories)
<p>matter founder. Licenced coach</p> <ul style="list-style-type: none"> • Paul Cummins – Active Dearne • Bev Jones – Zumba - Mind Over Matter – founder, REPs instructor <p>Councillors</p> <ul style="list-style-type: none"> • Sean Gibbons • Bev Chapman • Andy Pickering <p>PCSO's</p> <ul style="list-style-type: none"> • Jon Crossley • Pete Ely 	<ul style="list-style-type: none"> • Mind – Meetings and social café in the library, Thursday 10.30-3pm 01709 578764 • Aspire Drug & Alcohol Services – Mondays at hall gate centre 1pm-4pm. 01302 303900. • SMILE - Bhatia SMILE & Mex SMILE camo provides day activities for older people, older people with learning disabilities and people living with dementia. At SMILE we facilitate activities with local people and children, which bring generations together to grow Bhatia.Smile@doncaster.gov.uk • Mexborough Day Centre - Day care facilities help older or disabled people live independently in their own homes for as long as possible. Centres are open Monday to Friday 8.30am to 4.30pm. Held at the centreadultcontactteam@doncaster.gov.uk • Mexborough Activities Café - The Dementia Cafe provides information about living with dementia and other services available locally in an informal and comfortable environment. Held at Baptist Church - jane.owen@alzheimers.org.uk • Dementia Café – Ran at Business centre by Alzheimer's Society doncaster@alzheimers.org.uk 	

INDIVIDUALS (Key Individuals within the community and why)	ASSOCIATIONS Local Groups/Clubs	STORIES (Good news stories)
	<ul style="list-style-type: none"> • Women's Institute – 2nd Wednesday of month at The Willows Community Centre, 01302 325829 <p>Other:</p> <ul style="list-style-type: none"> • Love Mexborough – runs community events. Ran by Adam Lynch hello@lovemexborough.org • Highwoods Community Base - Identify cost effective ways in which to meet the needs of the local community, in particular, children living in the area of Highwood estate - • Partners & Community Together Meeting - 2nd Thursday of every month 6:30-8pm 01302 385178 • Allotments • Mexborough Neighbourhood Meetings - Running from the Library • Mexborough First • Mexborough Community Partnership Ltd - The charity runs general charitable purposes, Education/training, the prevention or relief of poverty, Amateur sport, environment/conservation/herit age, Economic/community development/employment for children and young people, elderly, ethnic minorities and general public mexboroughcommunitypartnership@gmail.com • Mexborough Mash - The Mexborough Mash provides a 	

INDIVIDUALS (Key Individuals within the community and why)	ASSOCIATIONS Local Groups/Clubs	STORIES (Good news stories)
	<p>social evening for adults with learning disabilities in a fun, safe environment). Every Tuesday doors open at 6:30pm.</p> <ul style="list-style-type: none"> • We Create - encourages people who are feeling lonely or experiencing mental health issues to express themselves through creative activities. For adults aged 18 and over every Wednesday, 10.30am & 12.30pm at Mexborough Library. - cara@thepoint.org.uk <p>Sport clubs:</p> <ul style="list-style-type: none"> • Scorpion Taekwondo 07380193376, scorpiontkdmex@outlook.com • Mexborough Athletic Sports Club - info@mexboroughathletic.org.uk 01709583426 • Mexborough Town F.C. • Mexborough Rovers FC - U13 Mexborough Rovers U13 Category: 11-a-side U 12 Mexborough Rovers U 12 Category: 9-a-side U10 Mexborough Rovers U10 Category: 7-a-side U7 Mexborough Rovers U7 Category: 5-a-side • Mexborough Tennis - 07912 873758 • Mexborough Cricket Club - Philip Barker Hon. Secretary mexboroughcc@hotmail.co.uk 07543905661 	

Ward Members

The Mexborough ward has three ward members who were elected in 2021.



Councillor Bev
Chapman

Mexborough
Mexborough First



Councillor Sean
Gibbons

Mexborough
Mexborough First



Councillor Andy
Pickering

Mexborough
Mexborough First

Health and Wealth

Deprivation

Health inequalities are avoidable differences across the population and between different groups within society. Health inequalities arise from the conditions in which we live, work and play. These conditions influence our opportunities for good health, how we think, feel and act, therefore shaping our health and wellbeing.

Evidence shows that people living in our most deprived areas face the worse health inequalities in relation to health access, experiences, and outcomes. Deprivation covers a range of issues and refers to unmet needs caused by a lack of resources, including but not limited to finances, housing, and education. It is measured in different ways including the Indices of Multiple Deprivation (IMD). Doncaster is one of the 10 most deprived communities in England. Mexborough has a significantly higher index of multiple deprivation (43.4) to England (21.7) and Doncaster (30.3).

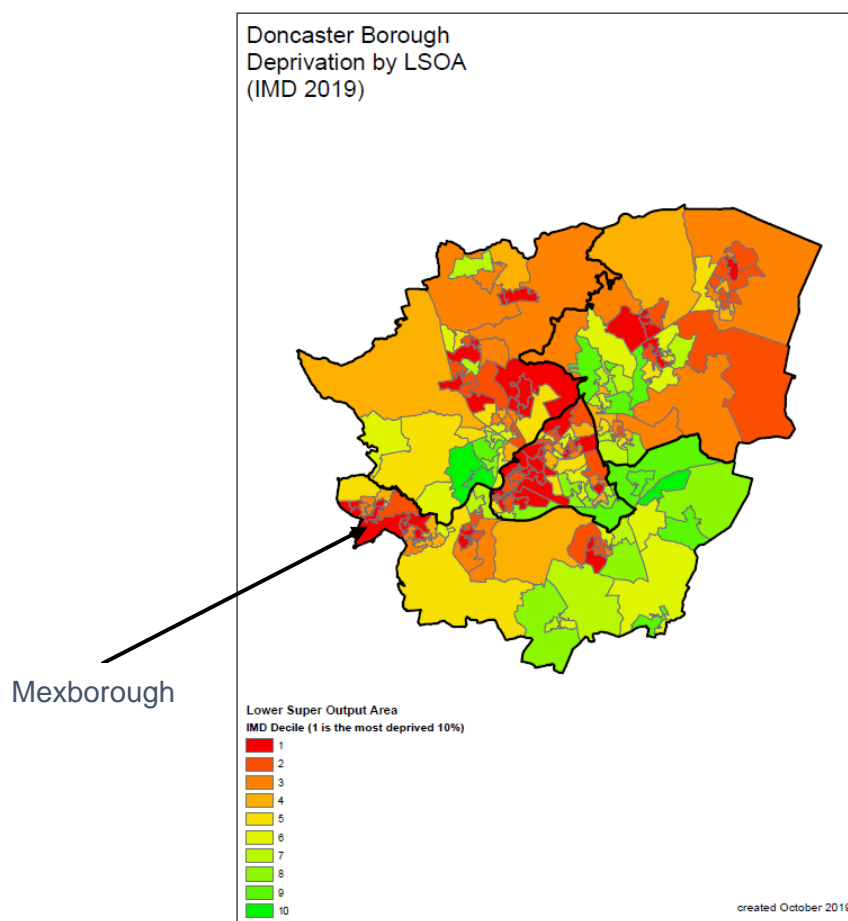


Figure 4 – Mexborough Indices of Multiple Deprivation 2019

The 2021 Census data has been used to produce estimates that classify households in England and Wales by four dimensions of deprivation: employment, education, health and disability and household overcrowding.

The Census 2021 data breaks down this information into household deprivation at a community level, Mexborough is compared to Doncaster and England.

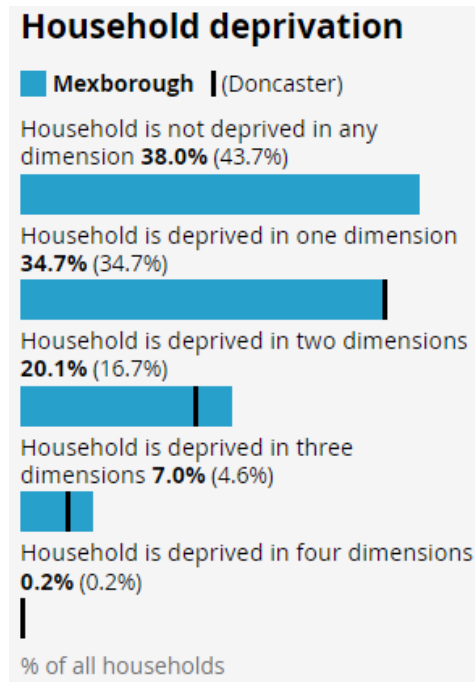


Figure 5. Household deprivation in Mexborough

Figure 6 shows that 38% of households are not deprived in any dimensions which is significantly lower than Doncaster (43.7%) and England (48.4%).

Similarly, 20.1% of households are deprived in two dimensions which is higher than Doncaster (16.7%) and England (14.2%) and households deprived in three dimensions (7%), which is significantly higher than Doncaster (4.6%) and England (3.7%). Furthermore, a high proportion of residents are living in income deprivation (23.2%), which is higher than Doncaster (16.6%) and England (12.9%). At LSOA level, 18% of households on Maple Road and Willow Drive in the West of the community experience deprivation in 3 dimensions and can be seen in Figure 6 below.

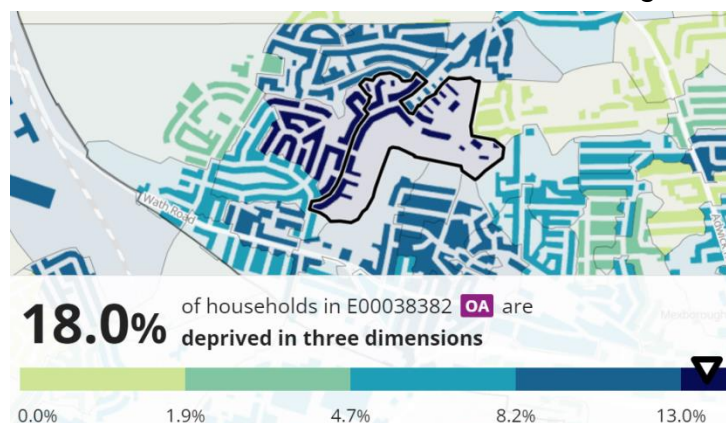


Figure 6 – Streets Deprived in 3 Dimensions

Wealth Inequalities

25.6% of the population in Mexborough live in homes eligible for means-tested benefits and 32.5% of children in the ward are living in poverty. The latter figure is significantly higher than the average of England (17%) and the borough (22.7%). Additionally, more children in the area are living in workless households in comparison to Doncaster's average. The trend continues as Mexborough has significantly higher levels of income deprivation (23.2%) compared to Doncaster (16.6%) and England (12.9%). 19.6% of older people are living in poverty, higher than Doncaster (15.9%) and England (14.2%). These figures are the same as reported in 2021 and are illustrated in Figure 6 below.

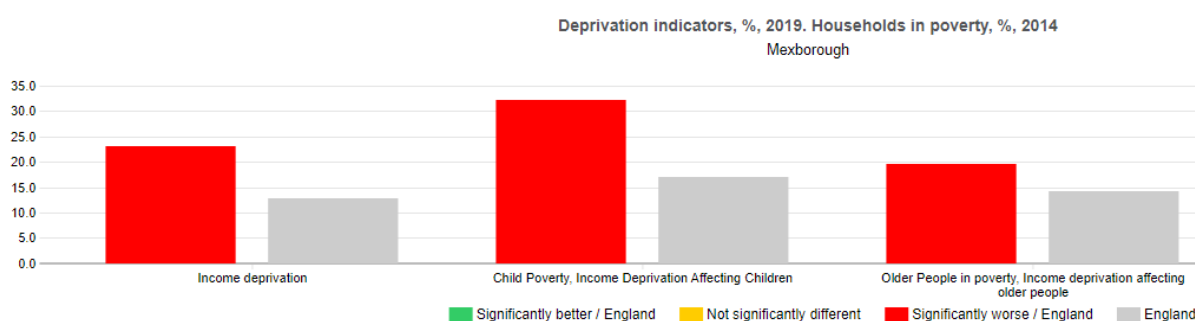


Figure 7 – indicators of poverty, Mexborough

Fuel Poverty

Fuel poverty is defined as a household living on a lower income which is not deemed reasonable enough to warm a home sufficiently. In 2023, 22.5% of adults in Mexborough West and 22.1% of people in Mexborough East were unable to warm their homes to a reasonable standard which is higher than Doncaster (18.8%) and significantly higher than England (13.2%). The recent cost of living crisis including rising fuel costs and inflation may be a contributing factor.

Food Poverty

There are 5 foodbanks located in the South Locality and one in the Mexborough Ward – run by the local social enterprise, Food Aware.

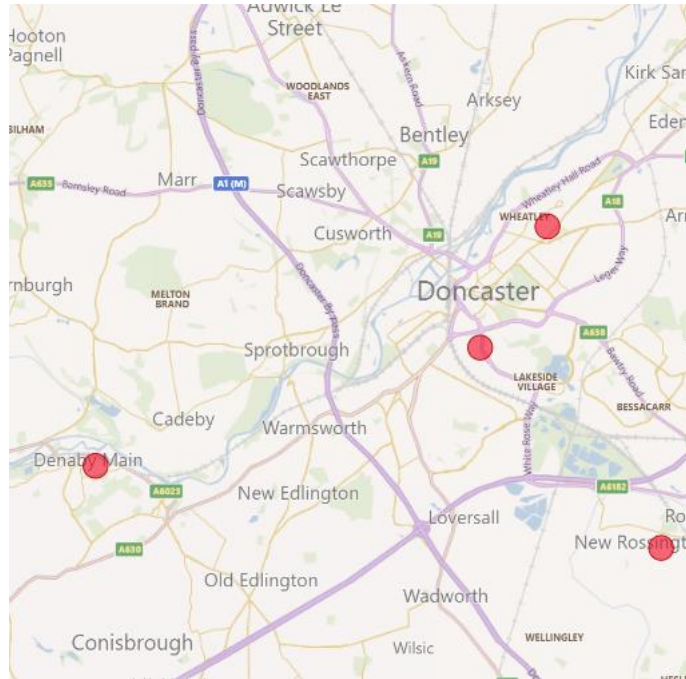


Figure 8. Location of foodbanks in South Locality, Doncaster

The most common household types needing support are Individuals, followed by families. The South locality ranks as 2nd in relative level of support compared to the rest of the city, highlighting the need to address poverty, food poverty and low income. Initiatives such as The Bread-and-Butter Thing, located at Mexborough Community HUB is in the community and aims to transition people out of food poverty.

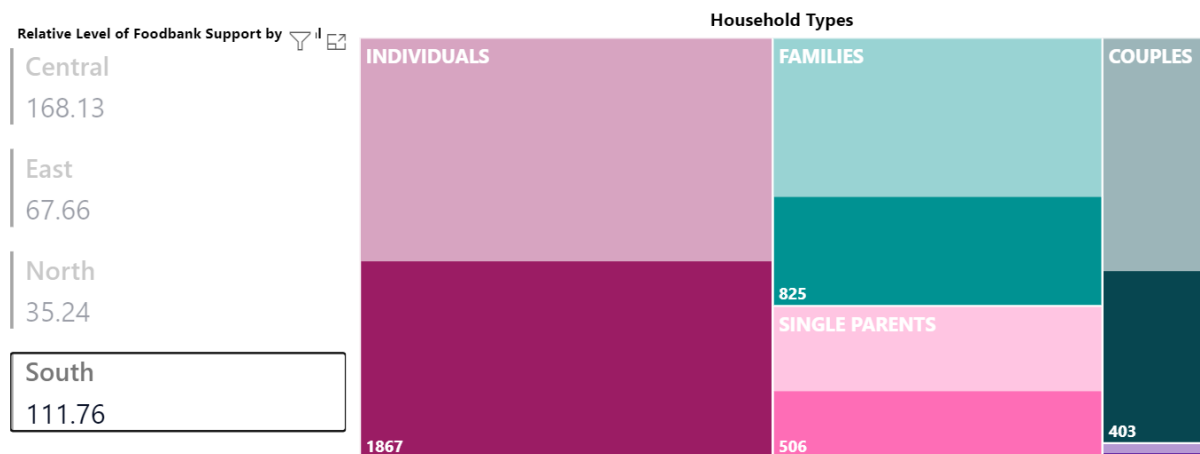


Figure 9. Relative Level of Foodbank Support by South and the household types

Top reasons for accessing support include the Cost-of-Living Crisis, debt, and low income which is consistent with Mexborough experiencing income deprivation and high levels of universal credit claimants.



Figure 10. The top reasons people have accessed support

Mexborough Food Bank submissions can be seen below and have increased since May 2022 suggesting the cost-of-living crisis and inflation have had an impact on resident’s access to affordable food.

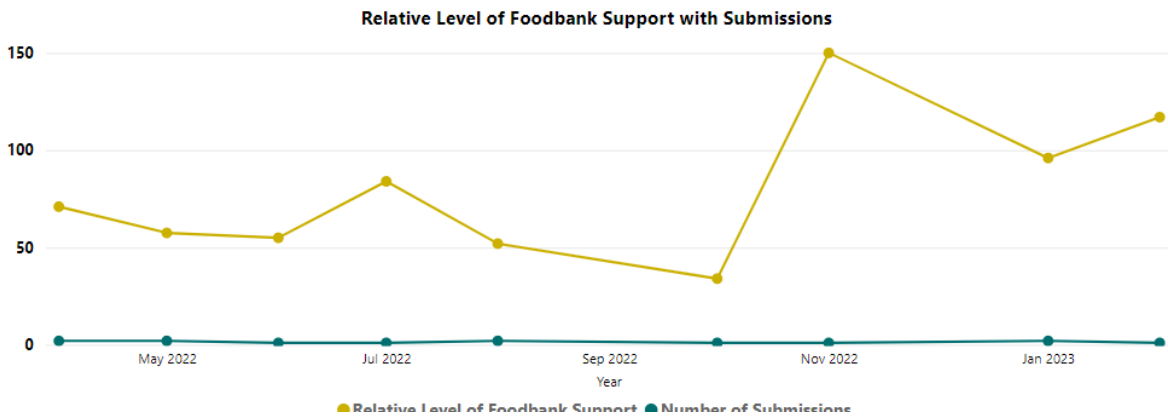


Figure 11. Relative Level of Foodbank support with Submissions

Employment

Mexborough has 8,109 (52.6%) people of working-age. The number of people unemployed in 2019 was 5.5%, this has now risen to 7.5% which is significantly higher than Doncaster (6.1%) and England (5%) and is 3rd highest in the borough (figure 11).

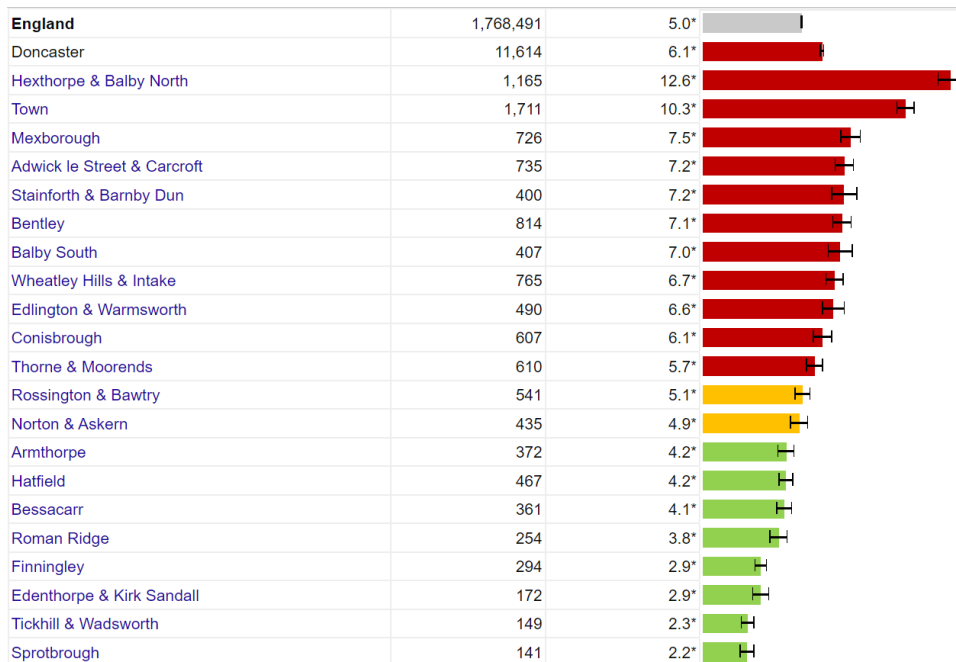


Figure 12. Unemployment rates in Mexborough ward

8.3% of the working-age population are claiming Employment and Support Allowance (ESA) and 5.97% are claiming universal credit, also the 3rd highest in the borough. The number of claimants has fluctuated over the last three years but remains consistently high across the ward and at LSOA level. Individual LSOA data can be found in the [appendix](#).

There are significantly higher proportions of working aged adults who are not in employment and have never worked (29.5%), compared to Doncaster (27.2%) and England (25.6%). This is particularly high in the Addison Road and Morton Road area where 49.2% of residents who aren't in employment have never worked, the highest in the ward and the Mexborough Ward.



Figure 13. Not in employment – never worked

The majority of residents that do work are employed full time (62.2%), which is similar to figures for Doncaster (60.7%) and England (59.1%). 28.6% of residents are employed part-time, which is in line with Doncaster (28.9%) and England (29.8%). Figure 13 shows that most people are employed in Elementary Occupations (16.6%), closely followed by Sales and customer service occupations (12.2%). Traditionally these roles are low skill and low pay roles. Furthermore, 10.1% are employed in Professional Occupations, which is lower than Doncaster (12.8%) and England (20.3%). Such jobs usually require higher skill levels, education and receive higher pay.

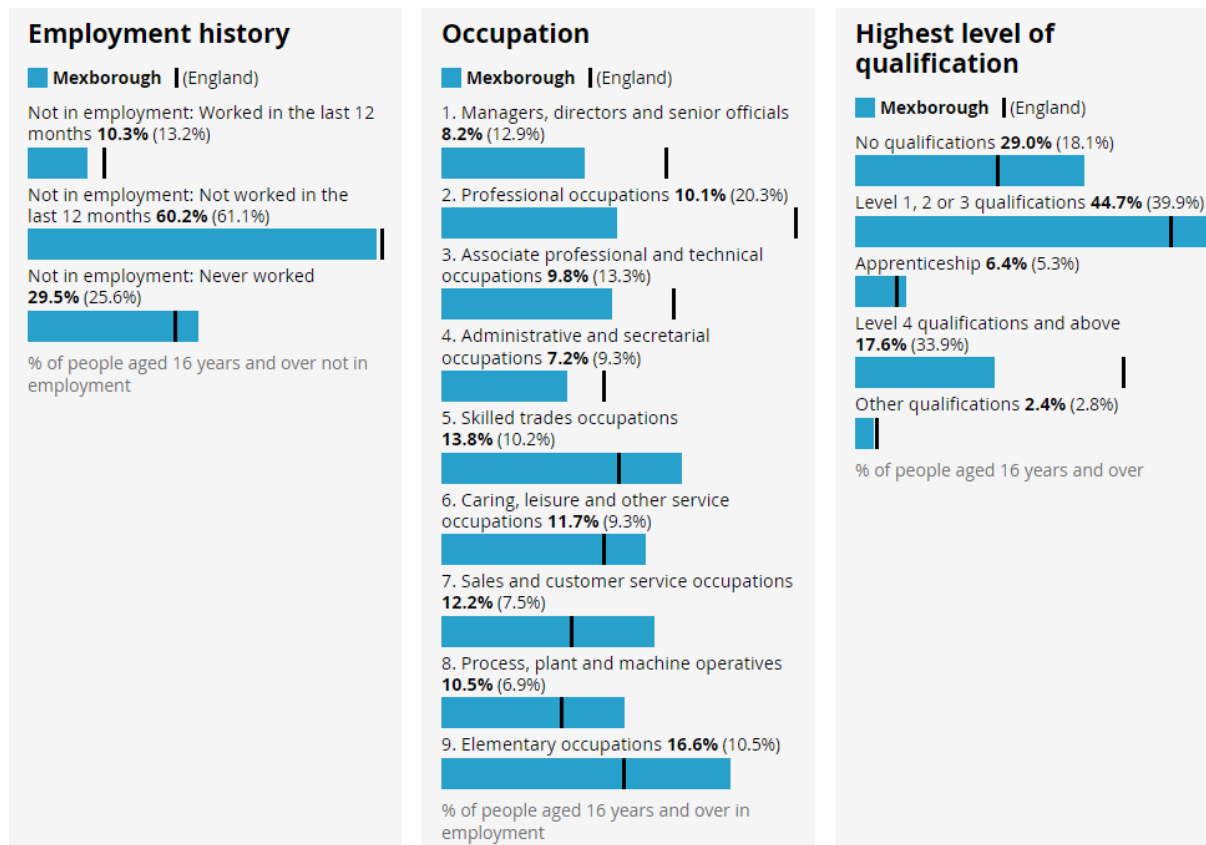


Figure 14. Employment and education

A large percentage of people aged 16 years and older have no qualifications (29%) compared to Doncaster (24.6%) and England (18.1%). Streets such as West Road, Lower Dolcliffe Road and Flowitt Street (49%) have particularly high levels of residents with no qualifications. Furthermore, residents who are qualified to Level 4 and above are significantly lower in Mexborough (17.6%) than Doncaster (22.7%) and England (33.9%).

Citizens Advice Doncaster Borough

Citizens Advice Doncaster Borough (CADB) are an independent charity and part of the Citizens Advice Network across England and Wales. They provide free, confidential, and impartial advice and campaign on money, benefit, housing, or employment issues affecting people's lives.

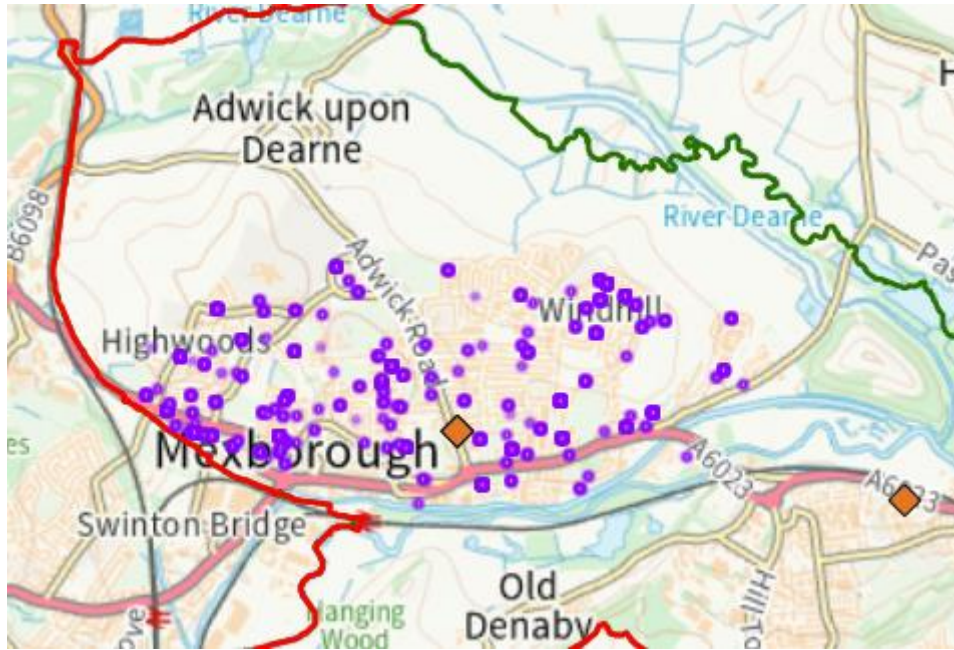


Figure 15. Interactions with Citizens Advice Doncaster Borough (CADB) in Mexborough during fiscal year 2023/24

During the 2023/24 fiscal year, Mexborough has 2132 interactions with CADB. It is the highest number in the South of Doncaster. There have been 192 clients accessing the support offered and a total of 290 are repeat interactions. Debts, benefits & tax credits, utilities and communications, benefits and universal credits and housing issues are the top 5 issues when seeking support.

Childhood Development

Children in Mexborough match the borough's average for child development at age 5. The Early Years Foundation Stage (EYFS) sets standards for the learning, development, and care of children from birth to 5 years old and includes a framework against which to assess child development as children reach the age of five. In 2017, 46.3% of 5-year-olds were achieving this standard. Only 33.5% of 16-year-olds were achieving 5 A*-C at G.C.S.E level in Mexborough compared to the borough's average of 49.1%.

Childhood Obesity

27.9% of children are overweight or obese at reception age compared to Doncaster (25.5%). This figure increases to 36.7% at year 6 compared, which is similar to the rate reported for the borough and England.

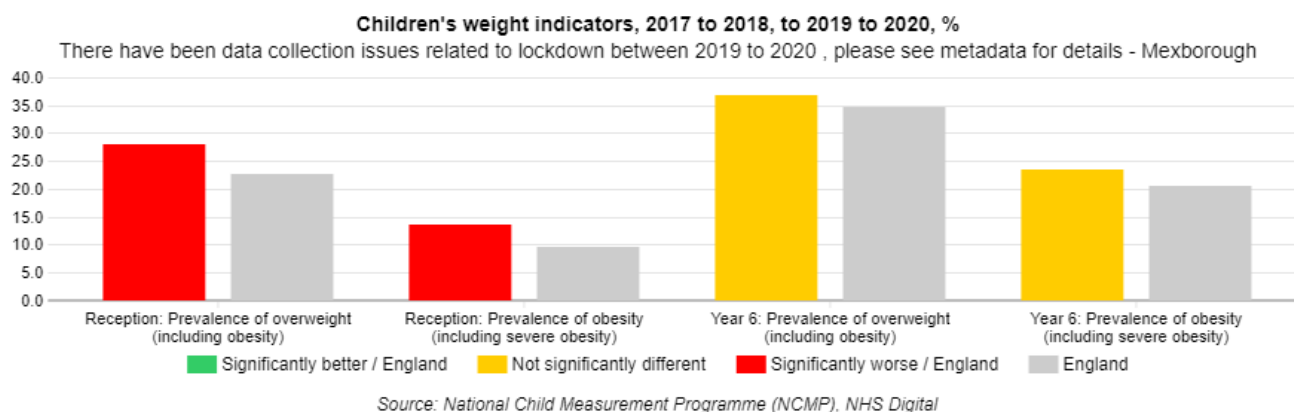


Figure 16 - Children's weight indicators, 2017 to 2018, 2019-2020

Pupil Lifestyle Survey

The Pupil Lifestyle Survey is conducted by City of Doncaster Council to provide valuable data on children and young people's health-related behaviour, through an anonymous school-based questionnaire. Data from the survey has provided a set of Doncaster-wide figures at key points in children and young people's development; KS2, 3 and 4.

In Mexborough 200 pupils participated. 94% of participants have breakfast, this is higher than Doncaster (86%). The survey also indicated that 23% of school-aged children in Mexborough have free school meals, this is higher than Doncaster (19%). 17% claimed to consume takeaway food most or every day (vs 15% across Doncaster). And daily fruit and vegetable consumption is 61%, lower than Doncaster (66%).

85% of children reported they feel able to clean themselves at home which is lower than Doncaster (90%). The data shows that only 76% of school children in Mexborough felt able to have a restful night's sleep, lower than Doncaster (80%). 92% of Children reported that they clean their teeth daily, less than Doncaster (95%) and 32% said they have visited the dentist in the last 12 months, lower than Doncaster

(45%). 45% of children encounter smoking in the home, higher than Doncaster (38%) and may be a contributing factor to high level of respiratory illness in the area. It is important to note that the Pupil Lifestyle Survey is self-reported and was not completed by all the schools.

Learner Outcomes

The Doncaster Pupils Lifestyle Survey conducted for the academic year 2020/2021 was completed by 2102 pupils in Doncaster overall. 91 students from the Mexborough ward. 53% identified as male and 40% as female. 7% preferred not to say or identified differently. Of these pupils, 90% had a white ethnicity and 10% ethnic minority. Compared with 81% for Doncaster as a whole and 13% ethnic minority. English was a second language for 19% of students. This was a lower per cent as reported across Doncaster (23%) as a whole. Prevalence of disability was 7% in the line compared to Doncaster 6%. Long-standing illness in pupils was reported at 16%, in line with Doncaster. Special Educational Needs (SEN) was reported for 11% of pupils from this location taking part in the survey, which is 2% higher than that reported for Doncaster overall. Of those reporting SEN, over 70% of pupils received extra help at school. This is much higher than the overall percentage for Doncaster (49%).

37 pupils have been recorded as receiving Elective Home Education. 13 children in the ward recorded as missing education in the ward (City of Doncaster Council, August 2023).

At KS4, each pupil is given an Attainment 8 score (a score out of 90) based on their 8 best GCSE grades including English, maths and at least 3 other traditional academic GCSEs (sciences, languages, and humanities). Other qualifications at an equivalent level (e.g., BTECs) can also count towards the score. In 2022, average GCSE attainment 8 score per pupil (out of 90) was 46.2 in Mexborough (115 pupils) which is comparable to Doncaster at 45.2. This was higher in comparison to 2019 (37.9).

At KS2, each pupil is assessed in reading, writing and maths. This shows the percentage of pupils who have reached the expected standard in all three subjects. In 2023, 63 % of pupils achieved the expected standard in reading, writing, and mathematics at key stage 2. It was higher than across Doncaster as a whole (55%). 2% increase compared to 2022 & 4% increase to 2019 in the ward.

Health Inequalities

Long Term Health Conditions

The proportion of residents self-reporting poorer health in Mexborough is considerably higher than the borough and national average. Approximately 25% of the population reported living with a limiting illness or a long-term health condition.

Emergency hospital admissions for chronic obstructive pulmonary disease (COPD) are two times the figures for the rest of England; lung cancer is the most prevalent cancer and COPD is the leading cause of mortality in the area. Other respiratory conditions are also prevalent in Mexborough including Asthma (12.3%), Chronic Bronchitis (2.5%) and Emphysema (1.1%). A leading cause of respiratory conditions is smoking, and Mexborough has a smoking prevalence of 20.9%.

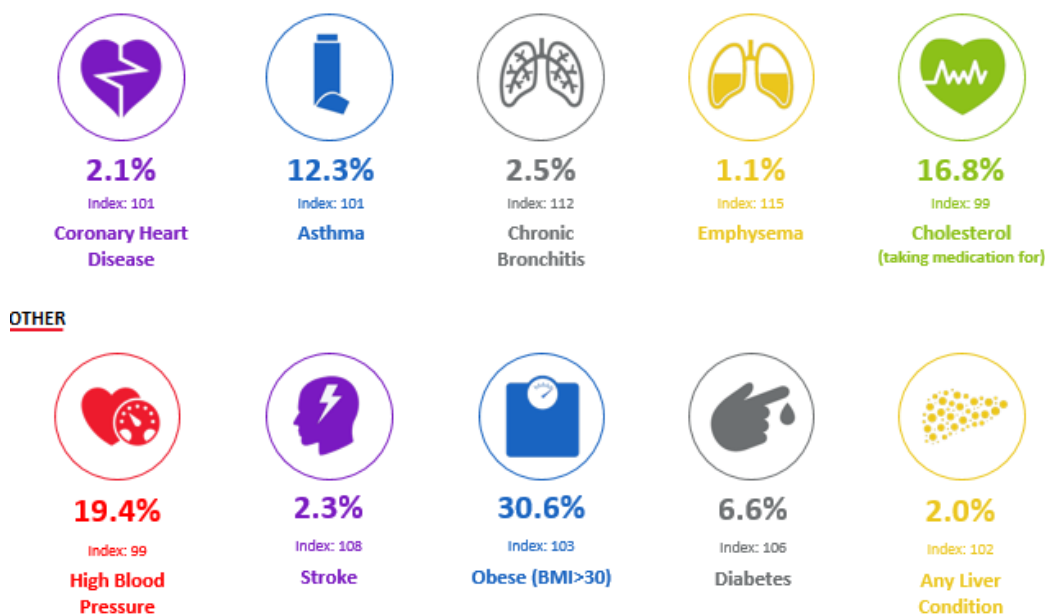


Figure 17. Acorn data for persons diagnosed disease

Circulatory conditions, including coronary heart disease, are the leading cause of premature death in Mexborough and the second main cause of death. When looking at the risk factors associated with heart conditions, 13.7% of adults drink five alcoholic beverages a day and there are significantly higher hospital admissions for alcohol-related harm. Further, 30.6% of adults are obese and only 61.4% eat fruit on 3 or fewer days a week.

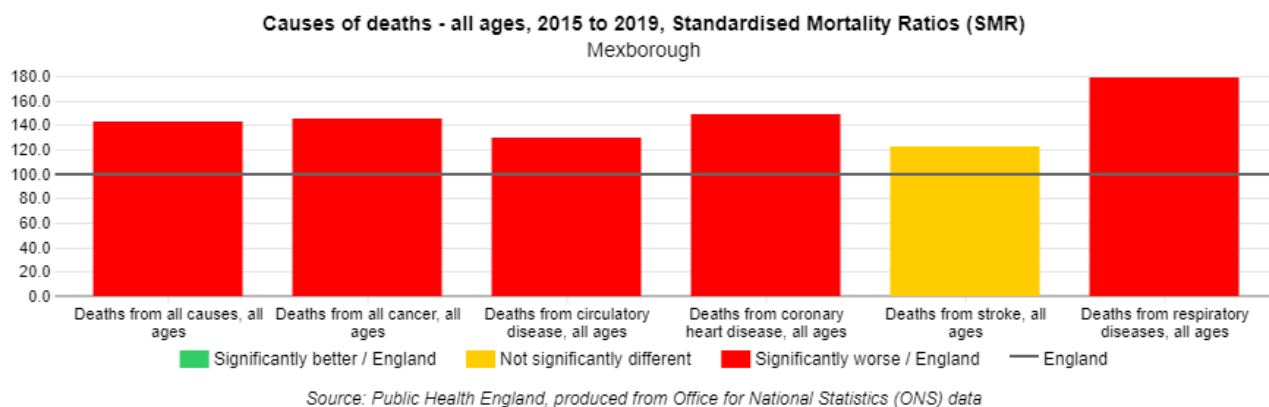


Figure 18. Causes of death for all ages in Mexborough

Alcohol

Figure 14 shows alcohol related admissions at Lower Super Output Area (LSOA) level, showing differences amongst areas within a ward. Notably, six out of Mexborough's ten LSOAs surpass the Doncaster average for such admissions. Of particular significance is Mexborough Windhill, which ranks as the third highest among all LSOAs in the South Locality.

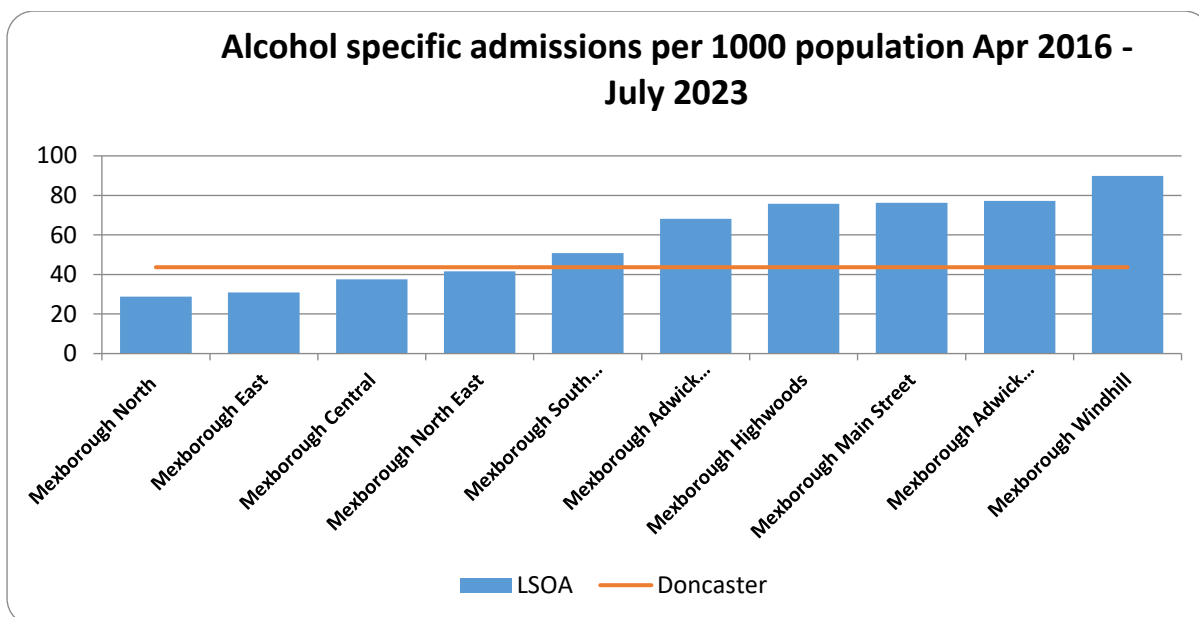


Figure 14. Alcohol specific admissions per 1000 population Apr 2016 - July 2023

Smoking

Table 1. Smoking Prevalence in Primary Care Network practices across Doncaster (NHS England, 2023)

Practice	Sum of 15+	Sum of Smokers	Sum of Previous
The Flying Scotsman Health Centre	9671	3053	31.57%
Frances Street Medical Centre	5931	1532	25.83%
The New Surgery	6143	1447	23.56%
The Nayar Practice	4229	979	23.15%
The Ransome Practice	6749	1519	22.51%
Edlington Health Centre Practice	4010	877	21.87%
Thorne Moor Medical Practice	7867	1688	21.46%
Conisbrough Medical Practice	1377	287	20.84%
Askern Medical Practice	6441	1333	20.70%
Field Road Surgery	7840	1615	20.60%
Kingthorne Group Practice	11261	2272	20.18%
Northfield Surgery	8405	1681	20.00%
Mexborough Health Centre	4130	821	19.88%
Great North Medical Group	13539	2682	19.81%
Regent Square Group Practice	8533	1675	19.63%
Conisbrough Group Practice	9756	1906	19.54%

Don Valley Healthcare	11148	2157	19.35%
St. Johns Group Practice	7301	1373	18.81%
The Scott Practice	12879	2327	18.07%
The Rossington Practice	6766	1207	17.84%
The Lakeside Practice	7261	1280	17.63%
Denaby Medical Practice	2921	509	17.43%
West End Clinic	3706	643	17.35%
White House Farm Medical Centre	5181	867	16.73%
Asa Medical Group	16707	2794	16.72%
Petersgate Medical Centre	7633	1225	16.05%
St Vincent Medical Centre	12203	1817	14.89%
The Oakwood Surgery	4797	677	14.11%
Mount Group Practice	11271	1567	13.90%
Scawsby Health Centre Practice	4850	655	13.51%
The Burns Practice	13152	1717	13.06%
Hatfield Health Centre	7785	952	12.23%
Park View Surgery	2126	238	11.19%
Dunsville Medical Centre	5268	542	10.29%
The Tickhill & Colliery Medical Practice	7447	700	9.40%
The Mayflower Medical Practice	6353	544	8.56%
Barnburgh Surgery	2044	174	8.51%
Doncaster	274681	49332	17.96%

According to NHS England in 2023 (NHS England Quality and Outcomes Framework 2022-2023), there are 54584 patients aged 15 years or over who are registered patients with Doncaster South Primary Network (PCN) in of Doncaster. 9298 of those are registered as smokers, equating to 17.03% of registered smokers across Doncaster.

In the New Surgery, 23.56% of patients (1447 out of total registered patients of 6143) are registered as smokers. 19.88% of patients are registered smokers from Mexborough Health Centre. Both GP's have higher rates of smokers registered than most others in the South locality.

It must be noted that data is taken from self-reported measures when signing up to GP. Residents registered at GP do not necessarily reside in Mexborough. This may not truly reflect the prevalence of smoking in specific communities. Also, these data rely on individuals self-reporting their behaviours. It must be noticed that patients registered with Mexborough Integrated Health Care, Askern Medical Practice who might reside in Mexborough are not included; included in the report of PCN North.

Life Expectancy

People living in Mexborough have a lower life expectancy and live more years in poor health in comparison to the averages of Doncaster and England. Life expectancies for men (74.5 years) and women (79 years) living in Mexborough are lower to the averages of Doncaster (*m*: 78.1, *f*: 81.6) and England (*m*: 79.7, *f*: 83.7).

Men are expected to develop a health condition at aged 56 and women aged 57, therefore decreasing the opportunity of living in better health by 6.9 years and 7 years, respectively. The following chart shows the differences in life expectancy and health life expectancy (how long it is expected to live in good health).

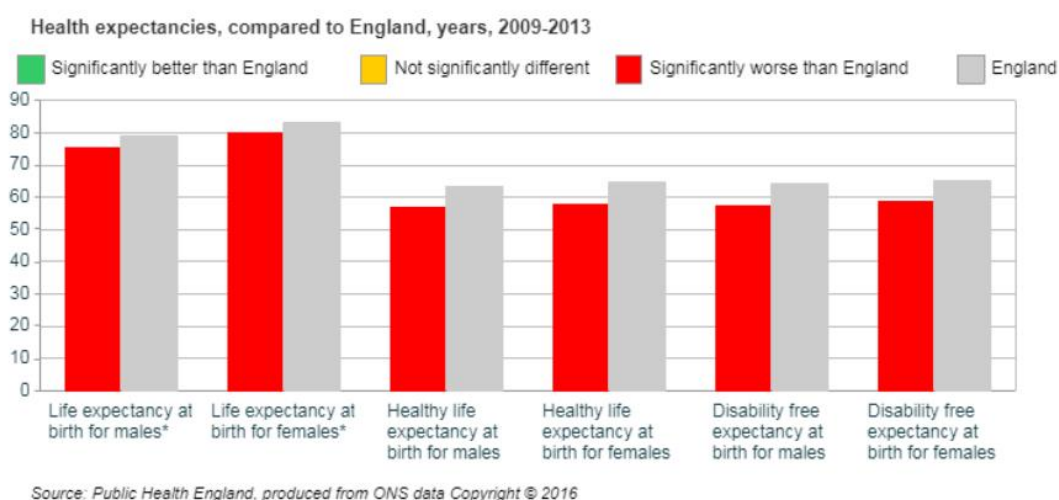


Figure 15. Life expectancies for residents in Mexborough

Loneliness and isolation

There are significantly higher levels of mental health issues in Mexborough. It is estimated that 9% of the population have clinical depression, 8.4% are feeling low, 22.6% report poor general health, 14.4% do not report general happiness and 10% feel no sense of worth.

Loneliness and isolation are both associated with mental health and wellbeing. There is currently work being undertaken to develop a more in depth understanding of the impact of Covid-19 on the mental health of residents in Mexborough. Data captured before 2020 and shown in the graphic below highlights the percentage of residents who had been diagnosed with clinical depression, as well as rates of other self-reported indicators of mental health and wellbeing.

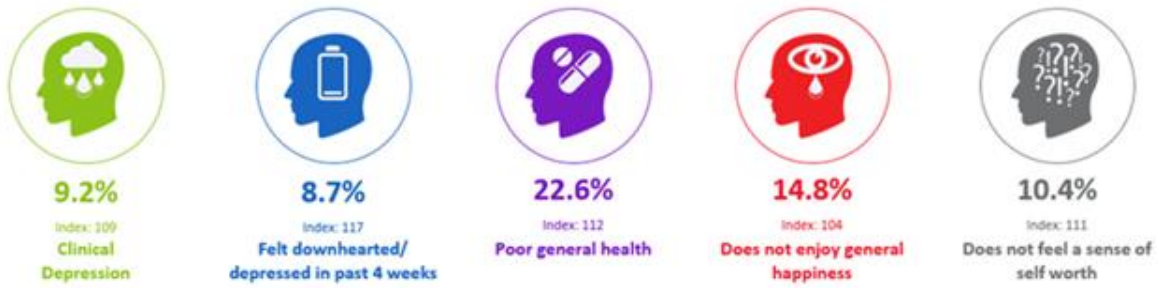


Figure 16 - ACORN DATA for person's wellbeing

Vulnerable Victims

Across the South locality there were only 8 cases of vulnerable people being supported. These numbers are linked to the number of closed cases in hotspot locations across the locality and particularly a reduction in the contact required through dedicated work in Mexborough. This has been done to help address inequalities and vulnerabilities experienced by those in need.

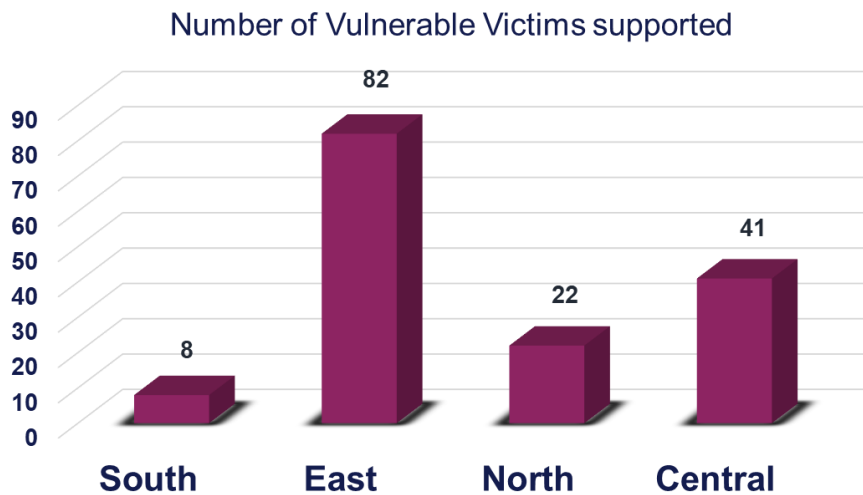


Figure 17. Number of Vulnerable Victims supported

Physical activity

Most of the information in this section is taken from Mosaic data, and more information about Mosaic can be found in the [appendix](#).

Levels of physical activity in Mexborough are low compared to the rest of the borough. This can be seen in the map below, which identifies the areas with the highest number of inactive households.

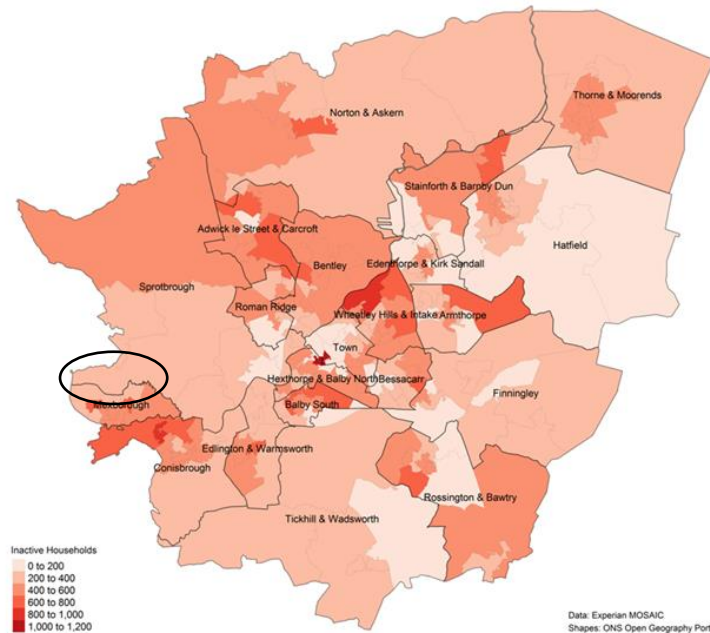


Figure 18 - Mosaic map of Doncaster Physical Activity Levels. Mexborough is highlighted in the circle.

Responses from 107 residents in Mexborough indicate that 41.7% never engage in moderate intensity physical activity. This figure is 7% higher than the national average. This data has been matched to the number of children and young people living in deprived and inactive households. The former data positions Mexborough as an area of focus and priority for the Get Doncaster Moving Strategy.

Community Information

Population

Population Size

Mexborough: 15,600

Age Profile

A total of 52.2% of Mexborough's population are of working-age (25–64 years old). The ward's overall age composition is in line with that of the English population and can be seen in Figure 19.

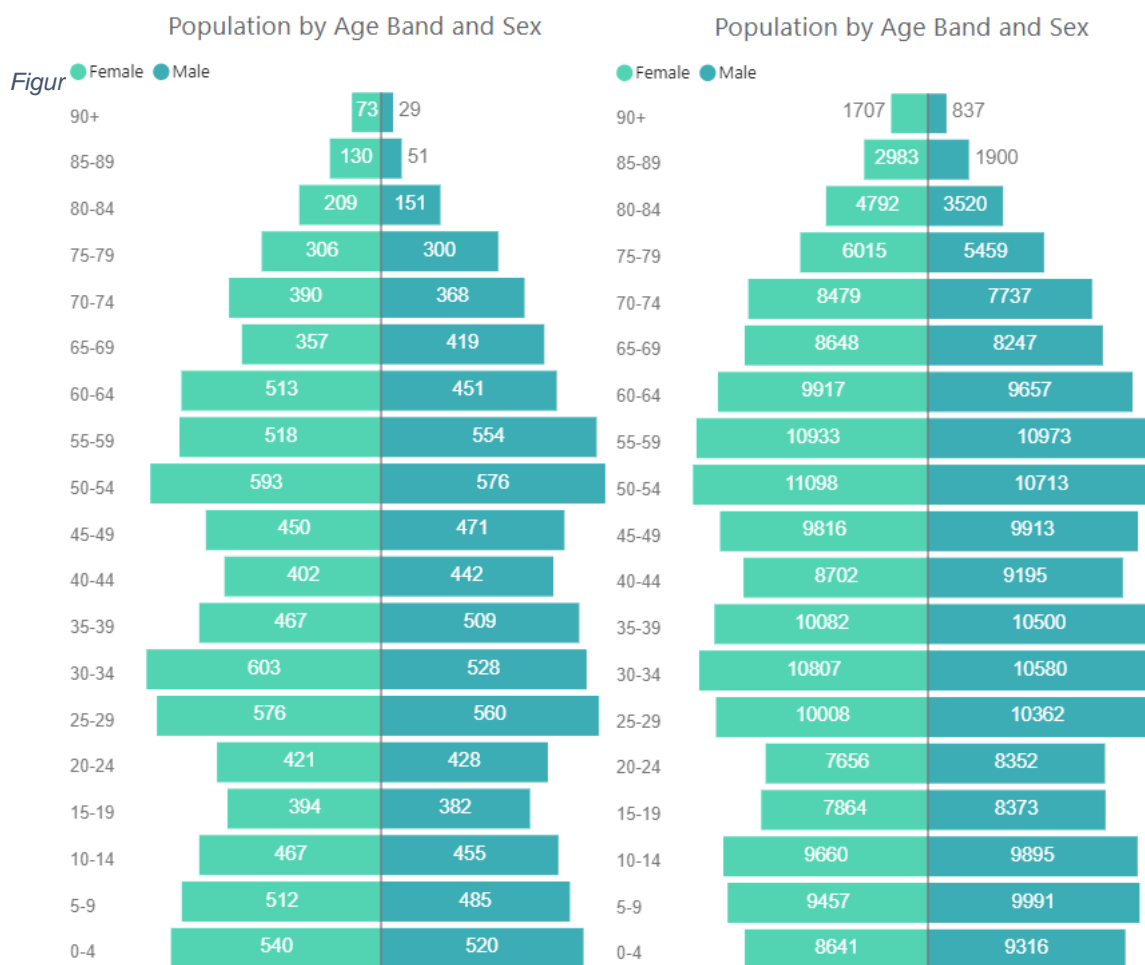


Figure 19. Mexborough and Doncaster population distribution

Ethnicity and Language

The community continues to be predominantly White British, with only 2.7% of the population being from other ethnic groups and is illustrated in the table below.

Table 2. Ethnic groups in Mexborough

Ethnic Group	Mexborough	Doncaster	England
Asian	0.6%	2.9%	9.6%
Black	0.7%	1.2%	4.2%
Mixed / Multiple	1.0%	1.5%	3.0%

White	97.3%	93.1%	81.0%
Other	0.4%	1.2%	2.2%

Housing

Housing conditions and the surrounding environment can have profound impacts upon residents' health and exacerbate health inequalities.

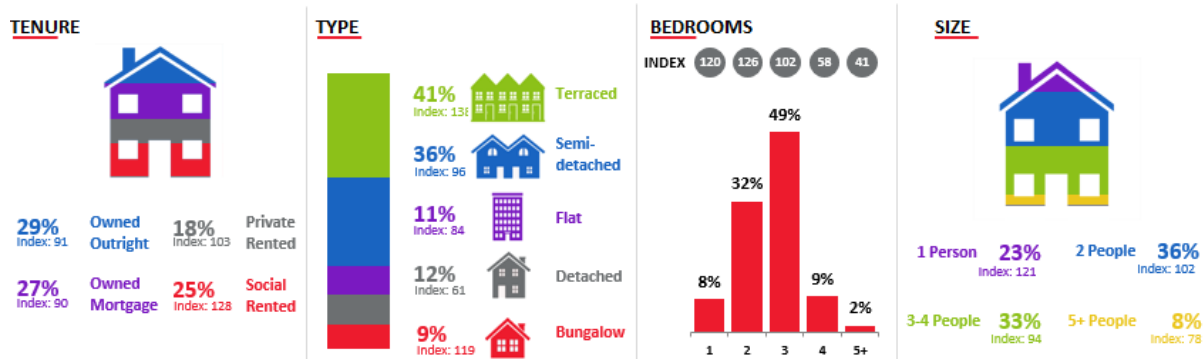


Figure 20. Tenure of households, household types, bedrooms and size in Mexborough

As seen in figure 20, most properties are owned outright or by mortgage (56%), with socially rented properties making up a quarter of the properties (25%). House types are primarily terraced or semi-detached properties, matching the highly dense profile of Mexborough. The highest concentration of terraced housing is Schofield Street (86%), Victoria Road (91.4%) and Albert Road (90.2%).

St Leger Housing

St Leger Homes provide housing services across Doncaster. They manage over 21,000 residences who are owned by the City of Doncaster Council. High levels of social housing, with a large proportion of bungalows and terraced housing are an indicator of deprivation and associated with overcrowding, low income and can consequently affect poor levels of childhood development. The number of socially rented houses along with the number of homeless families in Mexborough can be seen in the table below.

Table 3. St Leger housing in Mexborough

Type of House	Total number
Bungalows	553
Flats	342
Maisonette	0
Houses	744
Total	1639

Crime/ Antisocial behaviour (ASB)

Mexborough has fewer numbers of incidences reported or ASB compared to Conisbrough and Denaby, Finningley and Rossington and Bawtry ward.

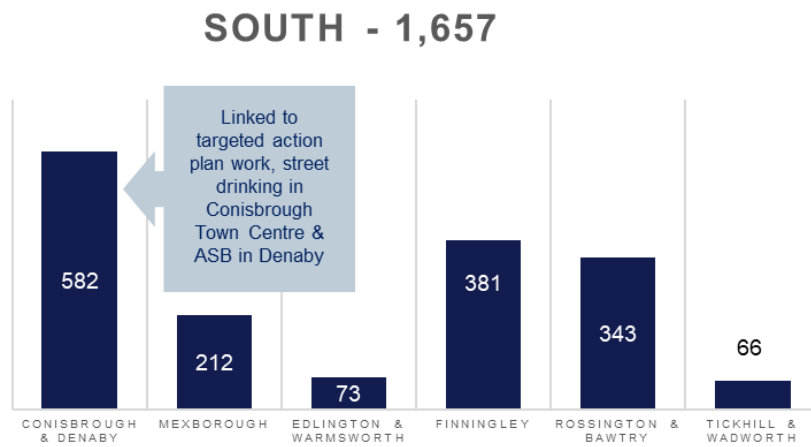


Figure 21. Levels of Antisocial behaviour and incidences by MSOA in South locality

Community Insight

Appreciative Inquiry

The Well Doncaster Team undertake Appreciative Inquiry (AI) within communities to gather insight to support code signing action plans with the community. Armstrong (2020) suggests in 'A changing world, again. How Appreciative Inquiry can guide our growth' that reframing the questions considering a crisis like Covid-19 and drawing on strengths and assets from past positive experience will help participants as they restructure their community. The AI questions are structured to pull out the successes of the past and present, to seek new potentials and possibilities and build on those through the Dream and Design stages.

Community Explorers spent 2 weeks in June 2022 talking to people in Mexborough and made over 42 contacts with members of the community. Participants were invited to join in the future stages and there was a mixture of preference for evening and day sessions. It was agreed these would alternate on a monthly basis.

The Appreciative Inquiry included the following steps:

1. **Discovery Phase** – This involved engagement with the residents of Mexborough to find out what is working well in the community. Responses were themed to allow priorities of the community to be established.
2. **Dream** – Residents and key stakeholders were invited to attend an initial workshop to discuss what ideas they have for their community and how these will meet the priorities highlighted in the discovery phase.
3. **Design** – All attendees were invited back for a second workshop to develop an action plan to direct work for the community.
4. **Destiny** – A collaborative way of working established and investing resources to meet the actions from the previous phase.

Thematic analysis of Appreciative Inquiry involves identifying and examining recurring themes or patterns within the positive stories, experiences, and perspectives shared by community members. It seeks to understand the strengths, values, and successful aspects that contribute to a thriving community. The process involves extracting common themes from narratives gathered through AI, allowing for a deeper understanding of the community's assets and aspirations. Through this analysis, communities can build on their strengths to facilitate positive change and shape future support and investment.

2022			
Theme	Sub theme	Quotes	Commentary
Assets	Shops	Family Hub, family lived there.	A lot commented on the family hub being a key asset to Mexborough families and the community.
	Children's centres		
	Shopping Market	Different things for all ages.	
	Community groups	Playgroup	Most residents suggested the range of shops made life easier
	Accessibility to amenities		

	<p>People Community</p>	<p>Children centre. Library is good.</p> <p>The market was good.</p> <p>Access to supermarkets made shopping easier. Social Club partnership, Mexborough partnership</p> <p>More local shops were active</p> <p>Shopping and market experience is ok. Was better in the past.</p> <p>Had a really good memories with community groups</p> <p>Shopping was good.</p> <p>Easy road access to range of amenities</p> <p>The family hub is the best thing in Mexborough</p> <p>Not lived in Mexborough long but good selection of shops.</p> <p>Family hub and friendly people.</p> <p>Good selection of shops.</p> <p>We had lots of shops in the past, a strong community and good neighbourhood</p> <p>We also have a cricket club and a tennis club. A running club and a leisure centre close by.</p>	<p>when accessing what they needed for general day to day life necessities. Particularly, the indoor market was a key asset that residents enjoyed visiting.</p> <p>The people were seen as really key assets. Friendly, approachable people was a standout for those living in Mexborough.</p>
--	-----------------------------	--	---

		<p>The nice people who live here and local businesses.</p> <p>Community skips.</p> <p>shops and people</p> <p>links for families to socialise with other families and have a free meal aswell, generations of families have attended</p> <p>more activity for kids and the elderly, no community spirit some residents feel isolated need more communication about activities for elderly</p> <p>close community lovely neighbours</p> <p>indoor market is nice</p> <p>Close to things, shops, schools</p> <p>Local residents and business owners</p> <p>Presently more shops and hospitality</p>	
Community Spirit	<p>People</p> <p>Village</p> <p>People</p> <p>Mining village</p> <p>Assets</p>	<p>Village unity</p> <p>Community very good – Mixing</p> <p>People helpful</p> <p>The community feel, everyone is friendly and pulls together to help others out.</p> <p>People want to try turn Mexborough around and</p>	<p>The fact Mexborough is a pit village and continues to have that community feel to it was a positive for many in Mexborough. This might be something to think about when concentrating on community events and bringing the community together.</p> <p>Some suggested that the sense of pride has</p>


		<p>make it a nice welcoming place.</p> <p>People want to try turn Mexborough around and make it a nice welcoming place.</p> <p>People loved and were proud of the town People will moan online but won't attend the meetings. There are meetings for the community - people need to be more active.</p> <p>Mexborough is an inclusive community.</p> <p>Christmas lights used to be all the way down to the factory shop.</p> <p>Mainly the people and the community spirit although not everyone, also has a thriving night life at the minute</p> <p>Pit village mentality.</p> <p>The friendliness of the people</p> <p>good community spirit, you knew your neighbours, looked out for each other. Changes since the miners strike now lacks community support</p> <p>Friendly people</p> <p>We all worked together and stayed local</p>	<p>diminished over the years and there is a little less love for the village at the moment.</p> <p>Community events may be a possible avenue to increase the community spirit and sense of pride people have for their community.</p>
--	--	--	---

		<p>good community spirit, you knew your neighbours, looked out for each other. Changes since the miners strike now lacks community support</p> <p>The people, some shops and the community</p> <p>The community spirit.</p> <p>Lots of event</p> <p>Everyone is friendly and welcoming, community spirit</p> <p>Friendly community spirit</p>	
Families & Children	<p>Activities</p> <p>Support for parents</p>	<p>More children's groups. Safe play and baby group.</p> <p>Parents took care of their kids more.</p> <p>Could use more activities for younger residents.</p> <p>Lots to do for young people.</p> <p>when it had its own council decided on what they needed, links for families provide activities for kids, cooking sessions, bug hunts, but also a supportive network for anyone to attend.</p> <p>could really do with a group for mums to support them with cost of living meal planning, saving on bills etc used to be something similar at hom hill offer free</p>	<p>The accessibility of family friendly services at the family hubs was a positive, although there were gaps highlighted that could be looked at in future planning.</p>

		<p>Enjoyment for kids and the family</p> <p>Plenty of things to keep busy and keep children occupied</p>	
Green Spaces	<p>Parks</p> <p>Outdoor gyms</p> <p>Active travel</p>	<p>Outdoor gym runs decent.</p> <p>More green spaces, parks.</p> <p>More green spaces, parks.</p> <p>the parks</p> <p>Good parks</p> <p>Green spaces are well taken care of. Good amenities locals especially older.</p> <p>we are surrounded by countryside.</p> <p>We need countryside. I think most of the countryside belongs to nearby boroughs not Doncaster.</p> <p>Good parks and good selection, but no access for double buggy.</p> <p>The walks and green spaces we have on our door step. Such as walking around the river Dearne, walking along Mexborough Canal.</p> <p>open spaces and fields</p> <p>lots of outdoor space and parks</p>	<p>Green space including outdoor gyms and parks were used by many. Loads enjoyed the ability to go for a country walk.</p>

Doncaster Talks

In 2019 Doncaster Talks undertook insight across the borough of Doncaster. Responses were separated into wards and thematically analysed. Across Mexborough, a total of 159 responses were received (1.02% of the Ward) and the main themes on what people liked about the area, what could be improved, and what the borough should focus on are displayed in the table below.



<p>Like</p> <ul style="list-style-type: none">• Greenspace/walks• Community spirit• Nothing – much concern about crime, drug, and gangs <p>Improve</p> <ul style="list-style-type: none">• Shops and amenities• Litter and cleaner streets• Community safety – gangs, drugs, ASB <p>Focus</p> <ul style="list-style-type: none">• Investment in Mexborough• Community safety – more policing and presence

Locality plans

Locality plans look at how we can together to strengthen communities and improve the lives and opportunities for residents living there.



The South Locality Plan has been developed in conjunction with residents and sets out what will be done to improve the community over the next 12 months. Communities were engaged with through several different ways:

The 2023-24 Locality Plan for the South Area outlines a set of priorities and can be viewed using the following link [South Locality Plan 2023 - Draft Version.pdf \(windows.net\)](#)

Community Investment

A total of £821,780 has been invested into the South locality. Of which, £236,290 was invested into the Mexborough Ward. This has been used primarily to improve the mental health of the residents, as well as improving the sense of community spirit in the town.

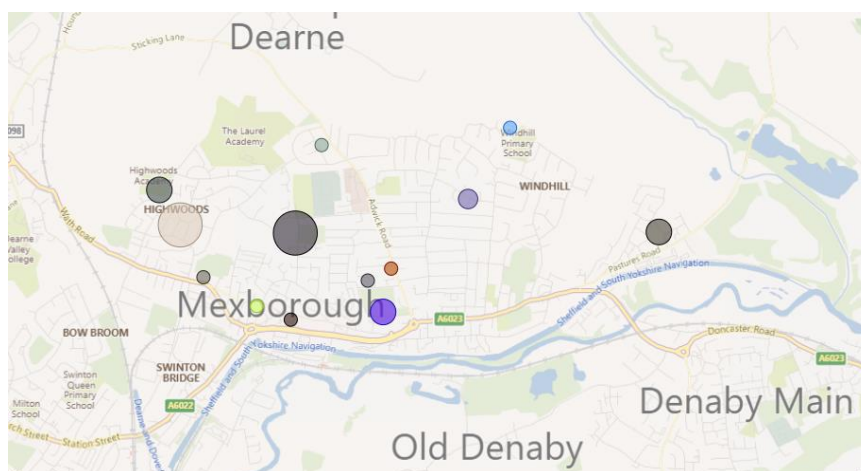


Figure 22. Heat map of community investment in Mexborough

Appendix

Well Doncaster Annual reports

More information about how Well Doncaster has been meeting these outcome and objective can be found below

Well Doncaster overall info: <https://youtu.be/e1RKOZoGI10>

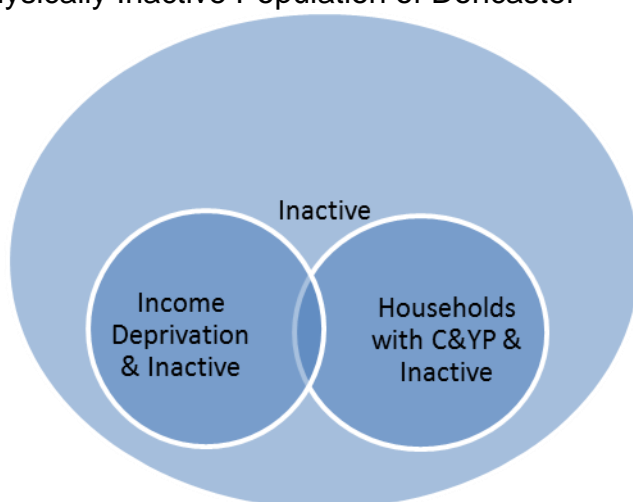
More information about how Well Doncaster has been meeting outcomes and objectives can be found in past and present annual report:

<https://welldoncaster.wordpress.com>

Mosaic Data

Mosaic Public Sector classifies the UK population into one of 66 types and 15 groups through a detailed and accurate understanding of each citizen's demographics, lifestyles, behaviours and location.

The Physically Inactive Population of Doncaster



The MOSAIC types who “Do not exercise” and “Do not take part in Sport” were searched and three priority groups have been identified through work with strategic partners as part of the development of Doncaster’s Physical Activity Strategy. The three priority groups are:

The Inactive

Families with children and young people

People living in income deprivation

These groups are cross-referenced against the inactivity list allowing for the identification of MOSAIC types which are both likely to be inactive and living in deprivation as well as inactive and from households with children and young people.

Link to the Get Doncaster Moving and LDP strategy;

<https://getdoncastermoving.org/>

Acorn profiles

Wellbeing Acorn segments the population into 4 groups (Health Challenges; At Risk; Caution; Healthy) and 25 types describing the health and wellbeing attributes of each postcode across the country. By analysing significant social and health related

behaviours, it provides precise information and an in depth understanding of upstream issues affected by current lifestyle traits.

INTERPRETING THE REPORT

The Wellbeing Acorn profile report helps you understand the underlying demographics, lifestyle and health attributes of your customers and service users by comparing their Wellbeing Acorn profile to a base (e.g. UK population, area or other customer groups).

INDEX



The Wellbeing Acorn Profile contains 12 variables that are indicators of Disability or Infirmary in the population and 9 variables related to unhealthy Behaviours. The average score measured against the base profile of Yorkshire and the Humber is 100. A value above 100 indicates that the area population is over represented for this characteristic, below 100 the value is less than the average or under represented.

Public Health Data

Fingertips

This is a new fingertips profile that uses data from Local Health an existing PHE data tool. Local Health is a collection of quality assured health information presented for small geographical areas. By presenting data for small areas, Local Health provides evidence of inequalities within local areas. It supports targeted interventions to reduce such inequalities.

Local Health contains indicators related to:

- Population and demographic factors
- Wider determinants of health
- Health outcomes

It presents data for middle super output areas (MSOA), electoral wards, clinical commissioning groups (CCG), local authorities, and England as a whole.

Please note, as the Local Health tool was designed to allow users to map small area data, a mapping option has not been provided in this profile.

<https://fingertips.phe.org.uk/profile/local-health/data#page/0>

[Community Profiles - Power BI Report Server](#)

Interactive Map

To access and identify assets at ward and locality level please use the following interactive map:

<https://www.google.co.uk/maps/d/viewer?mid=17BayPsljJ1OUq6U4OFbk9FKLYL2-wDZN&ll=53.50909620569456%2C-1.1365028000000032&z=14>

