

# Warmsworth Community Profile

## Well Doncaster



**Well Doncaster**

**Community Led Health and Wealth**

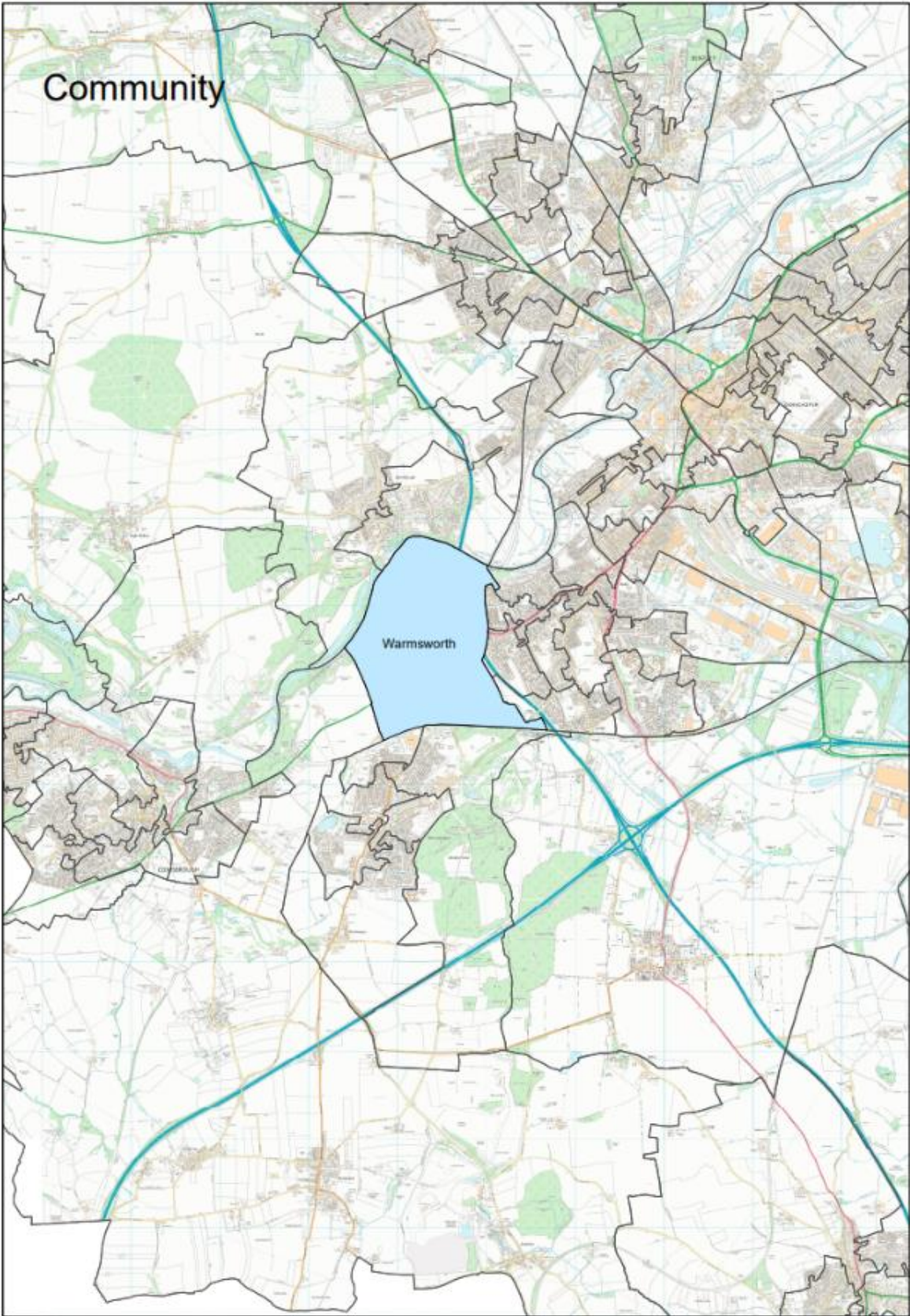
Empowering people in Doncaster to live better, healthier, and happier lives.

[www.welldoncaster.uk](http://www.welldoncaster.uk)

Well Doncaster  
**Community  
Wealth Builder**

Well Doncaster  
**Be Well**

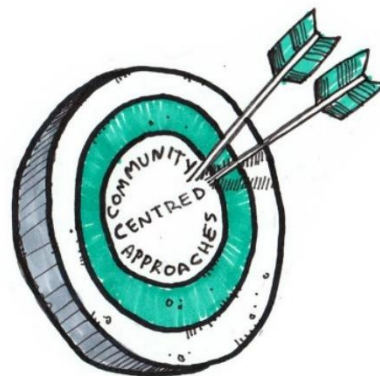
 **City of  
Doncaster  
Council**



## This Report

This report focuses on Warmsworth in the South of Doncaster and consists of two smaller communities at LSOA level: Warmsworth West (033B) and Warmsworth East (033C). The report begins with a one-page summary outlining key information and priorities about Edlington and Warmsworth. The document builds on the initial community profile of 2021 and updated figures have been included where possible. This report shows the initial conversations with communities, including ward members, community organisations, faith groups, residents and other organisations who work in the area. Communities' knowledge of their own areas enables them to identify their strengths and the assets on which they can build on. This document is shared with the intention of supporting those conversations and sharing information that might not be readily available to local people.

Where specific data for Warmsworth is unavailable, data for the Edlington and Warmsworth ward has been used. Additionally, data for the MSOA comprising of Braithwell, Stainton and Warmsworth has been utilised.



# Warmsworth



67% of pupils in Warmsworth achieved the expected standard in reading, writing, and mathematics at key stage 2



58.7% of residents aged 16 years+ work full time



Circulatory conditions are the leading cause of death in the ward



77.1% own their house outright or with a mortgage/ or shared ownership



19.3% of children are living in poverty



12.9% of the children in Edlington and Warmsworth are severely obese

## Contents

This Report.....	3
One page Summary .....	7
Key Health Priorities .....	7
Assets .....	8
Asset Maps .....	8
Business Assets .....	8
Health Assets.....	9
Community Assets.....	10
Assets in the Community .....	11
Population Health Management.....	11
Ward Members .....	15
Health and Wealth.....	16
Deprivation.....	16
Wealth Inequalities.....	17
Fuel Poverty.....	17
Food Poverty .....	17
Employment.....	18
Citizens Advice Doncaster Borough (CADB) .....	19
Childhood Development.....	20
Childhood Obesity .....	21
Family Hubs.....	21
Learner Outcomes .....	21
Pupil Lifestyle Survey .....	22
Health Inequalities .....	23
Long Term Health Conditions .....	23
Causes of death.....	23
Hospital admissions.....	23
Loneliness and Isolation .....	24
Alcohol Intake .....	24
Smoking.....	26
Life Expectancy .....	28
Vulnerable Victims .....	29
Physical activity.....	30
Green Spaces and Parks .....	30

Prevention and Control.....	<b>Error! Bookmark not defined.</b>
Community Information .....	32
Population.....	32
Population Size.....	32
Age Profile .....	32
Ethnicity and Language .....	32
Housing.....	33
St Leger Housing.....	33
Crime/ Antisocial Behaviour (ASB) .....	34
Community Insight.....	34
Appreciative Inquiry .....	34
Doncaster Talks .....	35
Community Investment .....	37
Appendix .....	38
Well Doncaster Annual reports .....	38
Census data 2021 .....	38
Public Health Data .....	38
Acorn profiles .....	38
Get Doncaster Moving survey.....	39
Mosaic data.....	39
Pupil Lifestyle Survey 2022.....	40
Power BI – Joint Strategic Needs Assessment.....	40

## One page Summary

The village lies along the A1(M) Doncaster Bypass and the A630. The River Don runs adjacent to it, as does the train line from Doncaster to Sheffield. The parish is bounded by Doncaster and the civil parishes of Sprotbrough, Edlington, Conisbrough, Cadeby and Balby. It lies 4 miles (6.5 km) from the centre of Doncaster. It falls in the catchment area of Warmsworth Primary School and Sir Thomas Wharton Academy. Next to the village is a dolomite limestone quarry operated by Sibelco. It is the only site in the region producing industrial minerals on a major scale.

Warmsworth has a higher population of older adults and the ward's overall age composition is in line with that of the English population. The community is predominantly White British.

Most houses are owned outright (43.6%), which is slightly higher than Doncaster at 33.6% and England at 32.5%. Currently socially rented housing stands at 8.3%, which is lower than Doncaster at 17% and the nationally at 17.1%. This tenure composition is significantly different to the Yorkshire and Humber benchmark.

Poverty and deprivation do not provide significant challenges for Warmsworth. The Index of Multiple Deprivations (IMD) score Edlington at 20.1, which is lower than Doncaster (30.3) and England (21.7). Unemployment and long-term unemployment figures are lower than national rates amongst working- age adults. 14.3% of children are currently living in poverty in Warmsworth, compared to 17.1% in England.

People in Warmsworth have a higher life expectancy and live more years in good health than the average person. The life expectancy for males is 81.4, whilst females are 84.2. 20.7% of people in Warmsworth have reported a limiting long-term illness or disability.

A key health priority for Warmsworth is the prevalence of respiratory and circulatory conditions. Emergency hospital admissions for chronic obstructive pulmonary disease (COPD) for the ward are nearly two times the figures for England; lung cancer is the most prevalent cancer and COPD is the leading cause of mortality in the area. Respiratory conditions are largely caused by smoking and smoking prevalence is 22.8%.

### Key Health Priorities

- Poor healthy life expectancy and high rates of respiratory and circulatory conditions.
- Effective self-management of long-term health conditions and appropriate use of health services.
- High levels of childhood obesity (particularly as they enter year 6).
- Warmsworth East has a significantly higher rates of alcohol related admissions to primary care services than Warmsworth West.

## Assets

### Asset Maps

The maps below show different types of assets across Warmsworth. These have been developed using ward boundaries rather than Middle Layer Super Output Areas (MSOAs).

It should be noted that these maps are a starting point in understanding the community and that further work is needed amongst the community to understand all the assets and how they are used.

### Business Assets

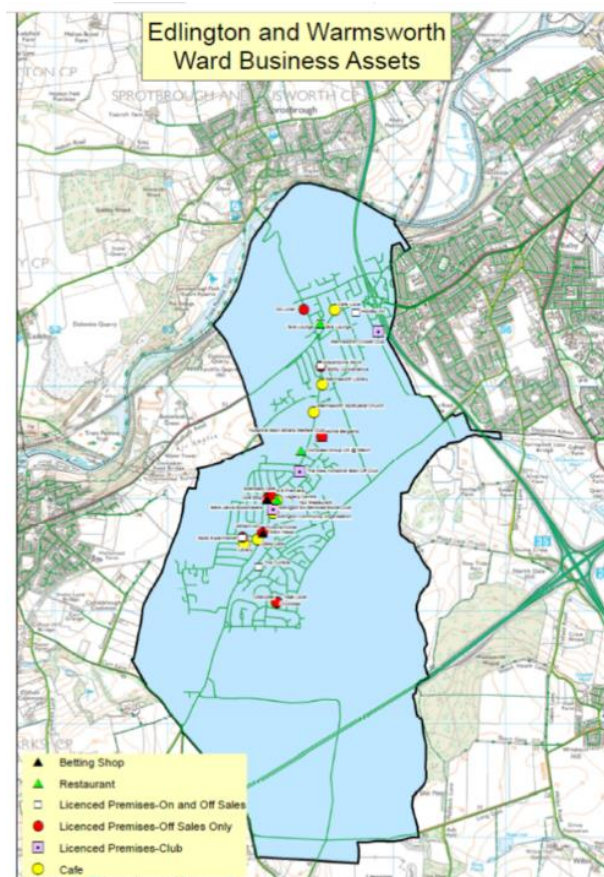


Figure 1 - Business Assets in Edlington and Warmsworth



## Health Assets

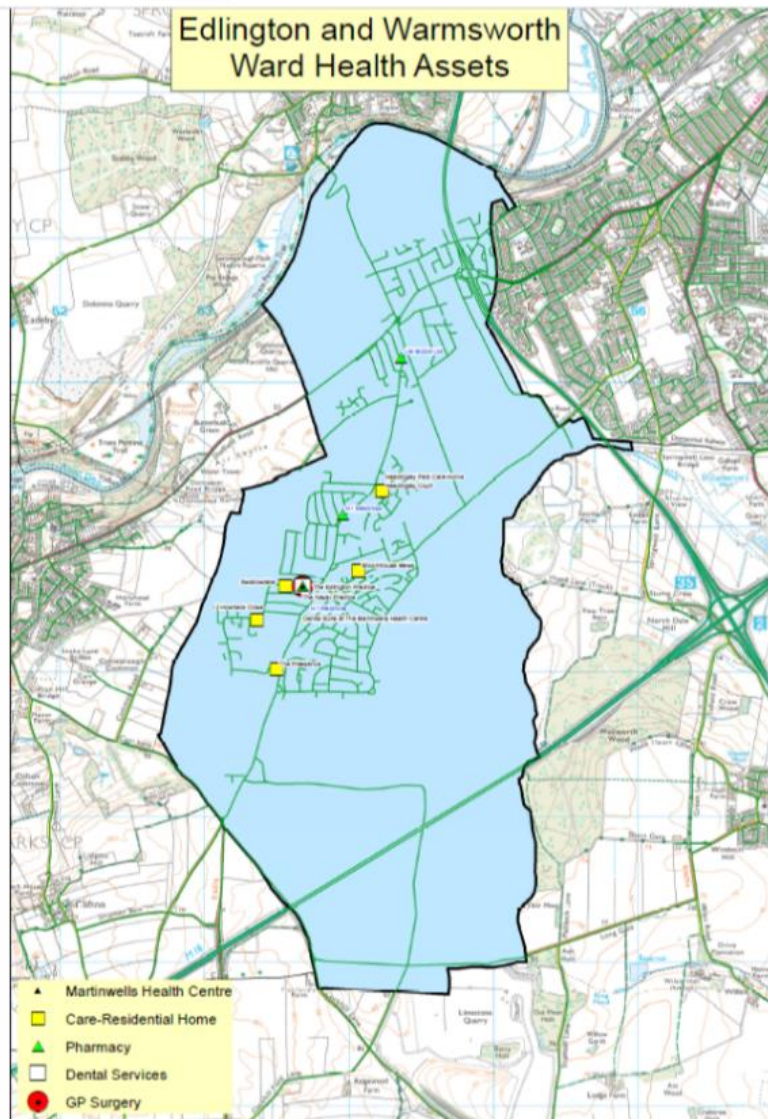
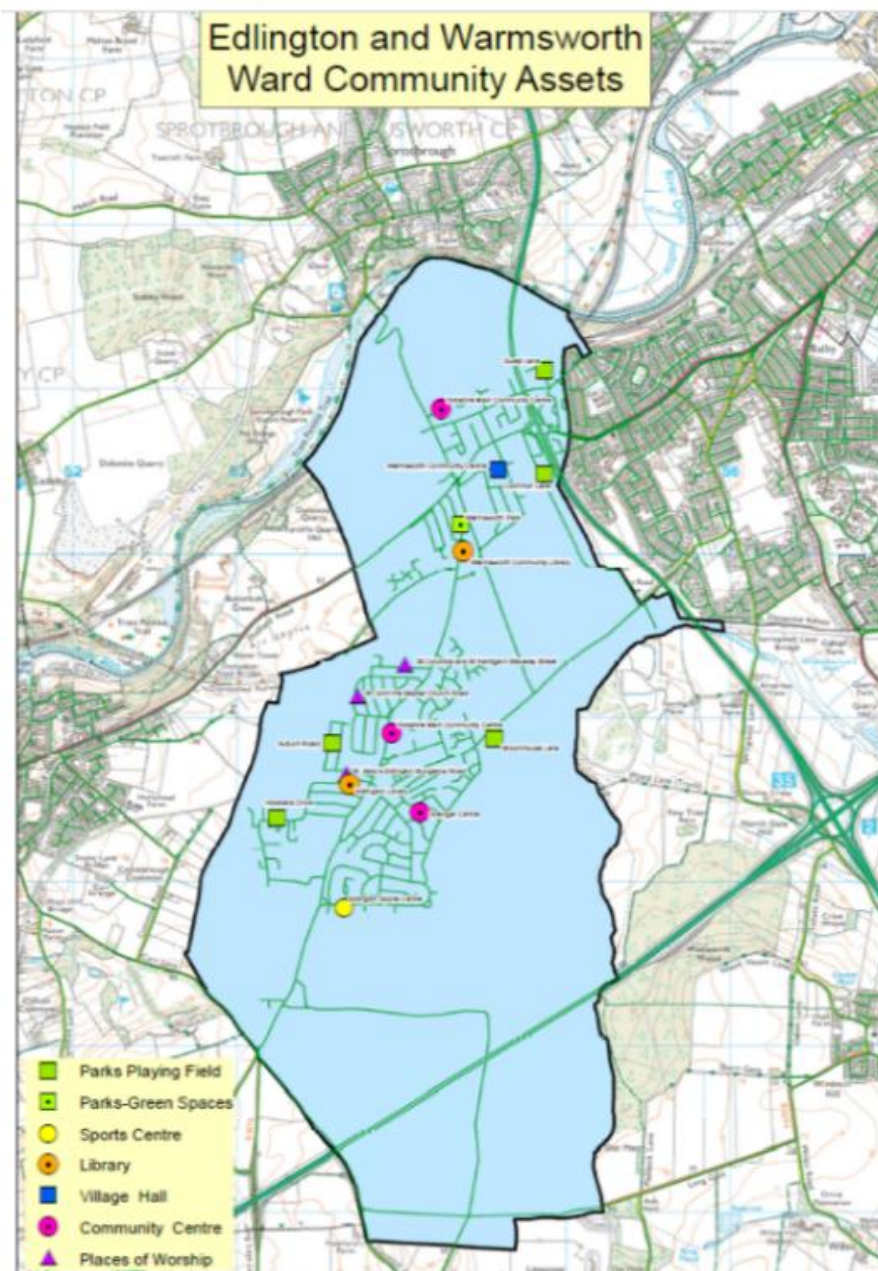


Figure 2- Map of Health Assets in Edlington and Warmsworth

## Community Assets



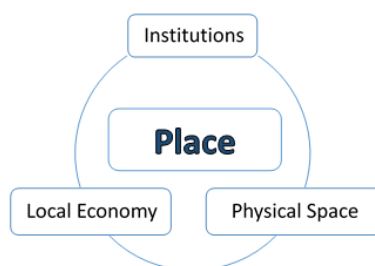
*Figure 3 - community assets and postcodes*

It is recognised that work is needed in the community to expand the understanding of who, how and what is accessed in the area. Greater knowledge of the identity of each community/ward will allow a more appropriate and effective response to community needs. Warmsworth remains a priority area for South Doncaster and ongoing work will continue to support it.

## Assets in the Community

### Population Health Management

Covid-19 has had a huge impact on communities. It is vital to understand the effect and direction the pandemic has had on community organisation in the ward so that: 1) support can be offered and 2) work can be implemented to manage any gaps or risks associated with changes. To support the former, Well Doncaster officers undertake regular population health management insight with community organisations in Warmsworth identifying their current status and needs, and work with each group to meet their goals. This is a living document and will be updated and adapted as needs are met and change. As part of a population health management approach, the following assets have been identified and themed around people and place:



Institutions (Schools/colleges etc.)	Physical space (Parks, car parks etc.)	Local Economy (Local profit Businesses)
<p><b>Schools:</b></p> <ul style="list-style-type: none"> <li>Warmsworth Primary School</li> </ul> <p><b>Religious:</b></p> <ul style="list-style-type: none"> <li>Warmsworth &amp; Edlington Spiritualist Centre</li> <li>Potters House</li> <li>Saint Peters Church Warmsworth</li> </ul>	<p><b>Green Space:</b></p> <ul style="list-style-type: none"> <li>Woodland Walk Playground, Common Lane; toddler and junior play areas, playing field, sports pitches</li> <li>Guest Lane; toddler and junior play areas &amp; playing field, sports pitches</li> <li>Bradsworth Road Playground,</li> <li>Warmsworth Cemetery</li> <li>Warmsworth Park Playground</li> </ul> <p><b>Community Centres</b></p> <ul style="list-style-type: none"> <li>Warmsworth Community Centre.</li> <li>Warmsworth Library</li> </ul>	<p><b>Food &amp; Beverage:</b></p> <ul style="list-style-type: none"> <li>Warmsworth Hall</li> <li>Graceholme Social Club &amp; Institute</li> <li>Indian restaurant &amp; wine Bar</li> <li>Lotus Restaurant</li> <li>Warmsworth Cricket Club</li> <li>Willows of Warmsworth</li> <li>Holiday Inn Restaurant</li> </ul> <p><b>Shops/ Supermarkets:</b></p> <ul style="list-style-type: none"> <li>Warmsworth Post Office</li> <li>Go – Local Mill Lane</li> </ul>

<p><b>Healthcare:</b></p> <ul style="list-style-type: none"> <li>• Tony Gregory Chiroprapist</li> <li>• Ashmount Court, Mental Health services</li> <li>• McGills Pharmacy Warmsworth</li> </ul>	<ul style="list-style-type: none"> <li>• Warmsworth Community Hub</li> </ul>	<ul style="list-style-type: none"> <li>• Sothy Convenience Store</li> <li>• Warmsworth Stone Ltd</li> <li>• Natural Stone Concepts</li> <li>• The Hair Salon</li> <li>• Romeo and Juliet unisex hair salon</li> <li>• Chic the hairdressers</li> <li>• Premier, Convenience store, Edlington Lane</li> </ul> <p><b>OTHER BUSINESSES</b></p> <ul style="list-style-type: none"> <li>• The Dolomite Quarry</li> <li>• Warmsworth Service Centre</li> <li>• Central service garage</li> <li>• Mark One Tuning</li> <li>• JET Petrol Station</li> </ul> <p><b>Hotels</b></p> <ul style="list-style-type: none"> <li>• Holiday Inn</li> </ul>
--	--	--



INDIVIDUALS (Key Individuals within the community)	ASSOCIATIONS Local Groups/Clubs	STORIES (Good news stories)
<p><b>Ward Members:</b></p> <ul style="list-style-type: none"> <li>• Cllr Phil Cole</li> <li>• Cllr Rob Reid</li> </ul> <p><b><u>Parish Councillors</u></b></p> <ul style="list-style-type: none"> <li>• <a href="#">Jo-Ann Auty</a></li> <li>• <a href="#">Simon Auty</a></li> <li>• <a href="#">Alan Bennett</a></li> <li>• <a href="#">David Maxey</a></li> <li>• <a href="#">Christine Pattison</a></li> <li>• <a href="#">Stewart White</a></li> <li>• Kirsty Lenham</li> <li>• Neil Robertson</li> <li>• Sally Beech</li> </ul> <p><b>Clerk</b> Andrew Bosmans</p> <p><b>Police, Community Support Officers:</b></p> <ul style="list-style-type: none"> <li>• Liam Watson, Police officer</li> <li>• Adrian Luscomb, Police Officer</li> <li>• Annette Flavel PCSO</li> </ul>	<p>Warmsworth Environmental Group</p> <ul style="list-style-type: none"> <li>• Meet weekly by Warmsworth library for litter picks and conservation of local spaces</li> </ul> <p>Warmsworth Ladies Club</p> <ul style="list-style-type: none"> <li>• Weekly meetings and socialisation with outings, activities, and guests.</li> </ul> <p>Sports Clubs</p> <ul style="list-style-type: none"> <li>• Warmsworth Cricket Club</li> </ul>	<p><b>Helping Hands (Hilltop)</b>  <i>45 food parcels  12 Smile packs  30 parent packs  75 calls  over 1000 in food donations</i></p> <p><i>Overview of the last 10 weeks:  353 households supported with 875 individuals of all ages  75 regular befriending calls weekly  174 courtesy calls</i></p> <p><i>Gifted:  Over £16000.00 in hygiene products  over £1600.00 in food from Tesco  over £1500.00 in food from Food Aware  over £750.00 in food from Fair Share  over £1000.00 in food from Morrisons  over £20000.00 in food from Aldi Supermarket  over £600.00 in food and cleaning products from the HUB</i></p> <p><i>Volunteer hours:  1800 hours</i></p>


<p><b>Professionals:</b></p> <ul style="list-style-type: none"> <li>Richard Lewis, Stronger communities Co-ordinator</li> </ul>		<p>120 Smile packs  30 parent packs  100 Easter activity packs  50 VE packs  15 Covid Time Capsule packs</p>  <p>They have supported in the following areas: Edlington, Old Edlington, Warmsworth, Wadworth, Conisbrough, Hexthorpe, Intake, Denaby, Mexborough, Swinton, Wath, Balby, Loversall, Bessacarr, Scawsby.</p>
---	--	--

Figure 7- People, places, and spaces

## Ward Members

The Edlington and Warmsworth ward has two ward members who were elected in 2021.



Councillor Phil  
Cole

Edlington and  
Warmsworth  
Labour

Portfolio Holder for  
Finance



Councillor Rob  
Reid

Edlington and  
Warmsworth  
Edlington and

Warmsworth First

## Health and Wealth

### Deprivation

Inequalities are avoidable differences across the population and between different groups within society. Health inequalities arise from the conditions in which we live, work and play. These conditions influence our opportunities for good health, how we think, feel and act, therefore shaping our health and wellbeing.

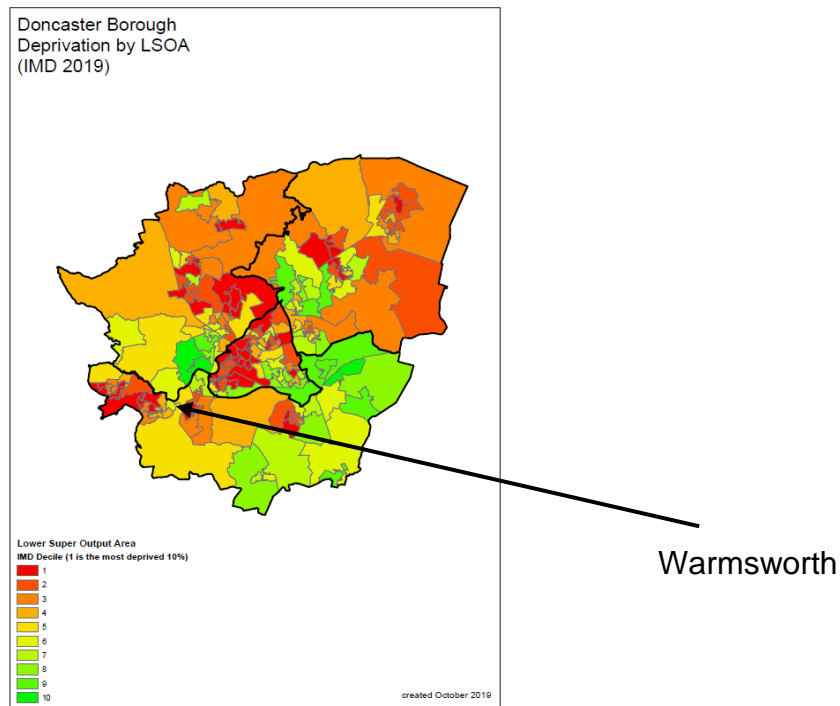


Figure 4- Doncaster Heat Map of LSOA Deprivation

Evidence shows that people living in our most deprived areas face the worse health inequalities in relation to health access, experiences, and outcomes. Deprivation covers a range of issues and refers to unmet needs caused by a lack of resources, including but not limited to finances, housing, and education. It is measured in different ways including the Indices of Multiple Deprivation (IMD).

Doncaster is one of the 10% most deprived communities in England. Some data for deprivation includes Braithwell, Stainton and Warmsworth (BSW). BSW has a similar index of multiple deprivation (20.1) to the rest of England (21.7), but significantly lower than Doncaster (30.3). The 2021 Census reports on household deprivation and calculates according to four dimensions: Education, Health, Housing and Employment. The 2021 Census, reports households deprived in one dimension in Warmsworth is 35.0% compared Doncaster at 34.7% and England of 33.5%. A full breakdown can be found in the figure below.



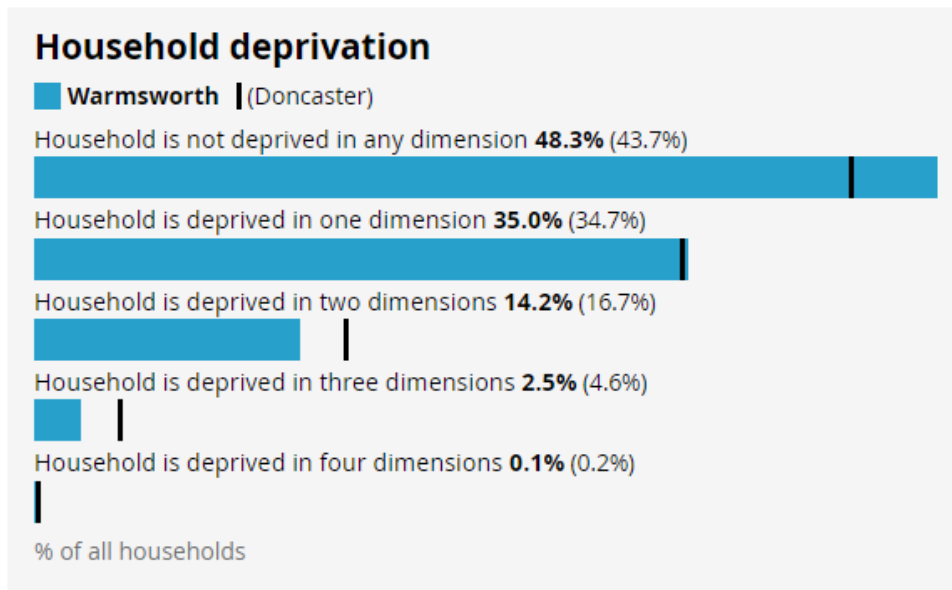


Figure 5- Household deprivation

### Wealth Inequalities

A high percentage of people in the Edlington and Warmsworth ward (17.6%) are experiencing income deprivation. This is higher than Doncaster and significantly higher than England, (Doncaster 16.6%, England's 12.9%). The impacts of poverty are felt across the life course with 19.3% of children living in poverty; this is significantly higher than England (13.2%). 16% of older people are living in deprivation compared to 14.2% across England and 15.9% in Doncaster

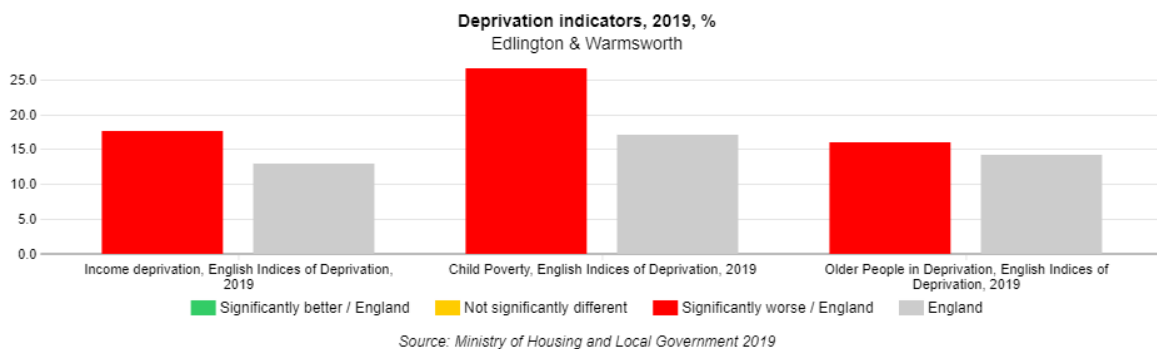


Figure 6- Deprivation indicators, Ministry of Housing and Local Government, 2019

### Fuel Poverty

Fuel poverty is not one of BSW's primary issues, levels here are in line with the national average at 14.3% compared to 13.2% across England. It is much lower than the Doncaster average at 18.8%.

### Food Poverty

There are 5 foodbanks located within the South locality, which account for 23.68% of distributed food across Doncaster. 2 of the 5 foodbanks are located within Edlington: Edlington Community Organisation and Helping Hands Community centre run their own.

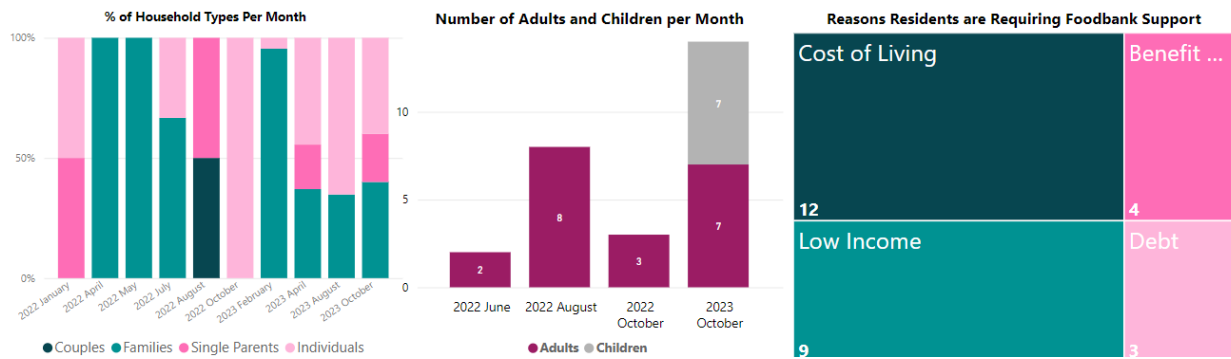


Figure 7 – Helping Hands foodbank distribution.

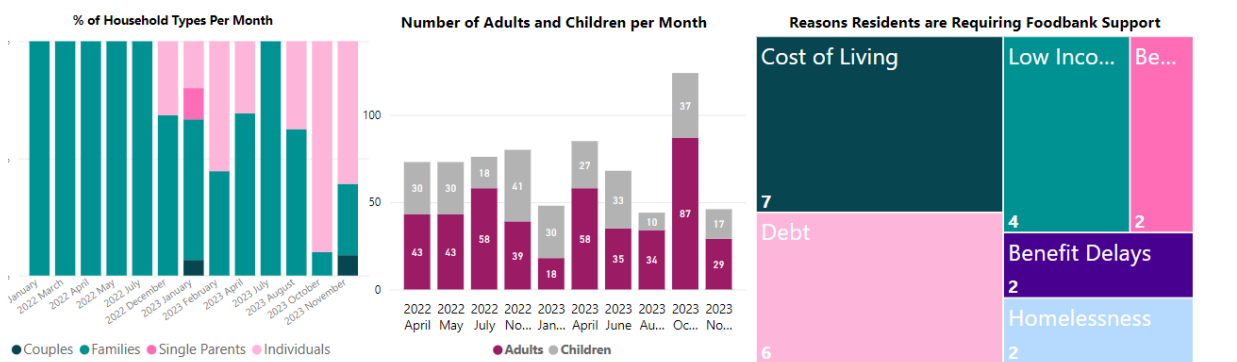


Figure 8 – ECO foodbank distribution.

These figures show the types of households accessing support and the numbers of adults and children per month. Across the two foodbanks in 2023, the primary reasons residents accessing the support have been identified as, cost of living and low income. Other quoted reasons have been changes and delays to benefits and debt. These findings are in line with the rest of the borough.

### Employment

The 2021 census data states that Warmsworth has an unemployment rate of 2.1% which is significantly lower than that of the whole borough (3.3%). There are 56.9% of residents who are currently in employment which is higher than the borough average at 54.9%. Finally, 41% of residents are financially inactive which is in line with the Doncaster average of 41.7%. Of those that are economically inactive, those not in employment who have worked in the past 12 months stands at 9.8% whilst those not in employment who have not worked in the past 12 months is 68.7% which is significantly higher than the Doncaster average of 61.7%. This may be due to the significantly higher percentage of residents aged 70 and over, and below the age of 14.

Of those residents who work, the vast majority work full-time between 31 and 48 hours, this accounts for 61.5%. Part-time workers completing between 16-30 hours per week account for 19.6%. Residents working full time and completing more than 49 hours per week make up 10.5% of the work force and finally part-time workers completing less than 15 hours make up 8.3%. These figures are all in line with the Doncaster average.

A higher proportion of Warmsworth, compared to Doncaster, work mainly from home (21%, 18.5% respectively). In line with the rest of the borough, those who work generally travel less than 10km for work suggesting residents work locally. The majority of these working residents drive a car or van to work (63.4%) compared to 57.9% across Doncaster.

Most working residents in Warmsworth hold lower managerial, administrative and professional occupations, 21.5% which is significantly higher than the Doncaster average of 16.6%.

The rates in Edlington and Warmsworth Universal Credit claims have reduced, in line with national and local rates and is back to pre-pandemic levels at 4.23%. Edlington and Warmsworth ward have the 10<sup>th</sup> highest percentage of claimants in the borough.

The 2021 census reports that qualification attainment is below the Doncaster average with 20.1% of residents having no qualifications compared to 24.6% across the borough and is in line with the national average of 18.1%. The majority of residents have level 1, 2 or 3 qualifications (42.4%) which is in line with both Doncaster (43.1%) and England (39.9%)

#### Citizens Advice Doncaster Borough (CADB)

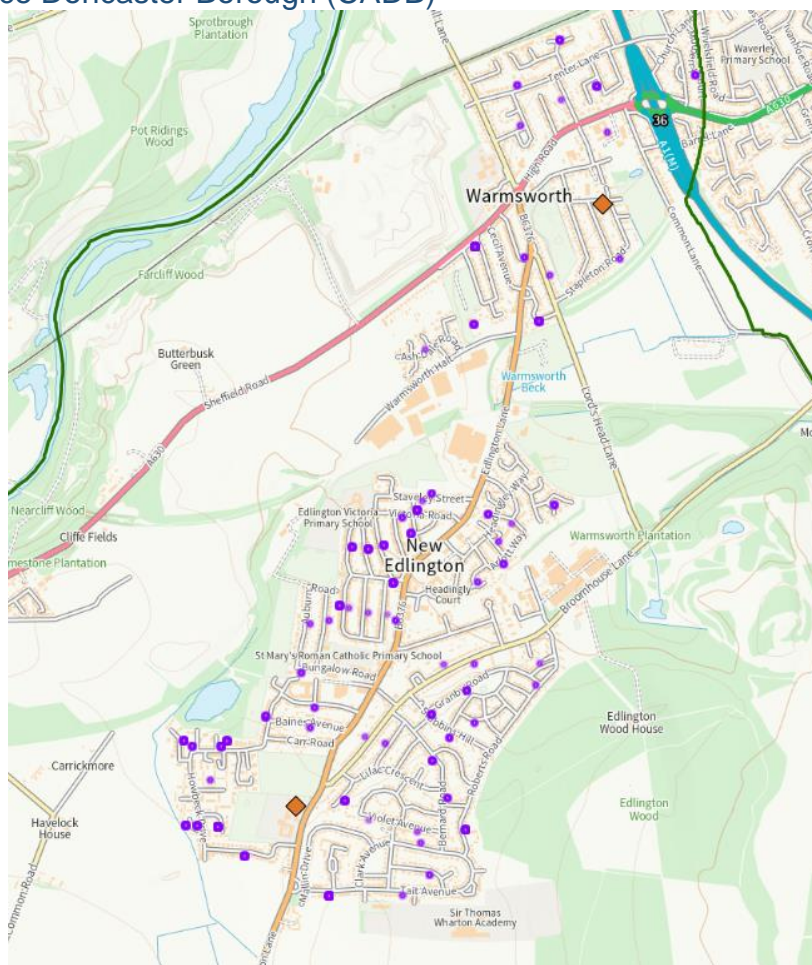


Figure 9- Map of interactions with Citizens Advice Doncaster Borough (CADB) during fiscal year 2023/24 in Edlington & Warmsworth

Citizens Advice Doncaster Borough (CADB) are an independent charity and part of the Citizens Advice Network across England and Wales. They provide free, confidential, and impartial advice and campaign on money, benefit, housing, or employment issues affecting people’s lives.

During the 2023/24 fiscal year, Edlington & Warmsworth has of 1034 number of interactions: the second lowest with CADB in the South of Doncaster. Currently there have been a total of 100 clients accessing in Edlington & Warmsworth. Debts, benefits & tax credits, utilities and communications, benefits and universal credits and housing issues are the top 5 issues when seeking support.

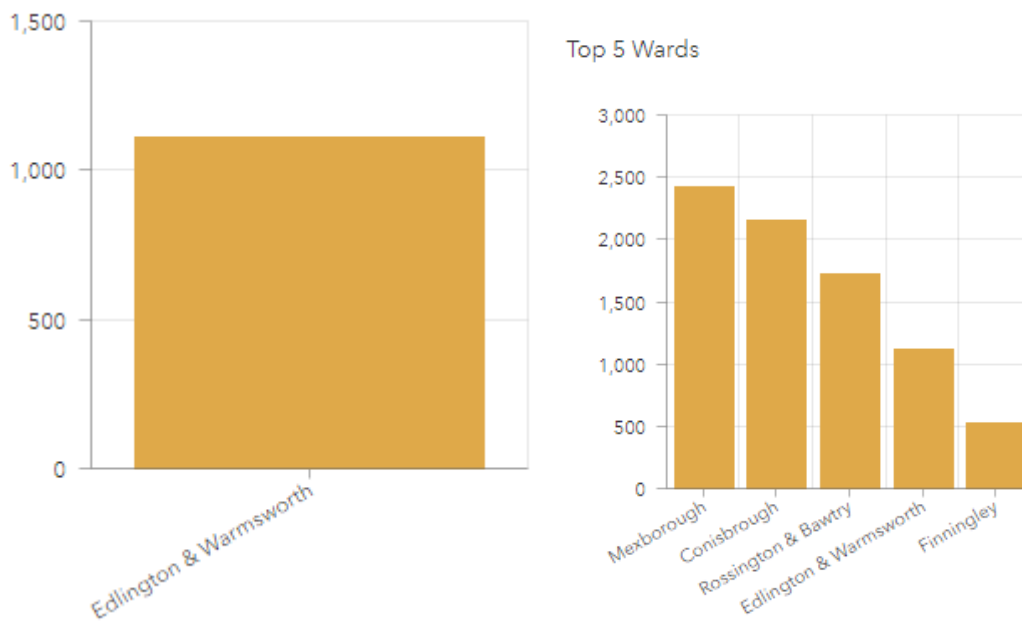


Figure 10- Number of interactions with Citizens Advice Doncaster Borough (CADB) during fiscal year 2023/24 in Edlington & Warmsworth

Currently there have been a total of 100 clients accessing in Edlington & Warmsworth. Debts, benefits & tax credits, utilities and communications, benefits and universal credits and housing issues are the top 5 issues when seeking support.

### Childhood Development

Growing up in poverty damages children's health and well-being, adversely affecting their future health and life chances as adults. Ensuring a good environment in childhood, especially early childhood, is important. A considerable body of evidence links adverse childhood circumstances to poor child health outcomes and future adult ill health. The Income Deprivation Affecting Children Index (IDACI) measures the proportion of all children aged 0 to 15 living in income deprived families. In the BSW ward, 14.3% of children are classed as living in child poverty, this is significantly lower than Doncaster at 22.7%, and lower than England (17.1%). Data shows that the measure of children living in poverty in BSW is below half that of children living in nearby Edlington at 32.3%.

## Childhood Obesity

At reception in 2021, 12.9% of the children in Edlington and Warmsworth are severely obese and 25.9% are overweight. This has increased since 2018 which reported 10% severely obese and 23.3% are overweight. At year 6, these figures increase to 23.5% and 37%, respectively compared to 21% and 33.3% in 2018.

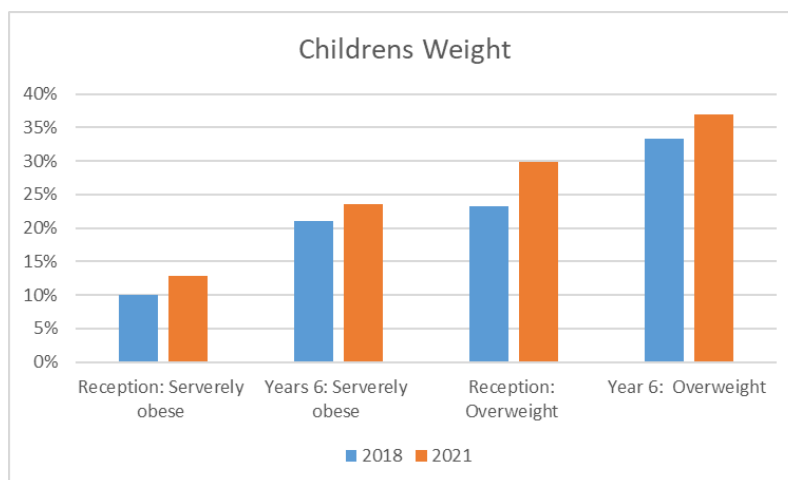


Figure 11– Children’s Weight and Obesity

## Family Hubs

Doncaster Family Hubs are the ‘place to go’ for families. They work with other providers to offer a range of activities, services and information for families and welcome families with children of all ages from conception through childhood to adolescence. There are 3 family hubs within the South locality, these are in Denaby Main, Rossington and Mexborough. Family Hub membership in the Edlington and Warmsworth ward is lower than the Doncaster total at 76% and 83% respectively.

Part of the role of Doncaster Family Hubs is to provide support to families accessing two-year-old funding (a government scheme funded entitlement to childcare). The number of eligible children living in the Edlington and Warmsworth ward taking up their funding entitlement to Two Year Funding is 44. The total number of open families that are working with family hub services is 6. The total number of children aged under 5 years who are receiving targeted support with their development is 22. These statistics are similar to neighbouring wards in the South locality.

## Learner Outcomes

The Doncaster Pupils Lifestyle Survey conducted for the academic year 2020/2021 was completed by 2102 pupils in Doncaster overall. 182 students from the Edlington and Warmsworth ward. 52% identified as male and 43% as female. 5% preferred not to say or identified differently. Of these pupils, 87% had a white ethnicity and 10% ethnic minority. Compared with 81% for Doncaster as a white and 13% ethnic minority. English was a second language for 19% in Edlington and Warmsworth. This was a lower per cent as reported across Doncaster (23%) as a whole. Prevalence of disability was 8% in the line compared to Doncaster 6%. Long-standing illness in pupils was reported at 19%. This’s 4% higher than across Doncaster.

Special Educational Needs (SEN) was reported for 10% of pupils from the Edlington and Warmsworth taking part in the survey, which is 1% higher than that reported for Doncaster overall. Of those reporting SEN, over 31% of pupils received extra help at school. This is lower than the overall percentage for Doncaster (49%).

5 children in Warmsworth have been recorded as receiving Elective Home Education (City of Doncaster Council, August 2023).

At KS4, each pupil is given an Attainment 8 score (a score out of 90) based on their 8 best GCSE grades including English, maths and at least 3 other traditional academic GCSEs (sciences, languages, and humanities). Other qualifications at an equivalent level (e.g., BTECs) can also count towards the score. In 2022, average GCSE attainment 8 score per pupil (out of 90) was 39.5, in Warmsworth average GCSE Attainment 8 was 50.9 (achieved by 50 pupils). This was higher comparing to Doncaster (45.2) and compared to the year 2019 (44.3).

At KS2, each pupil is assessed in reading, writing and maths. This shows the percentage of pupils who have reached the expected standard in all three subjects. In 2023, 67% of pupils in Warmsworth achieved the expected standard in reading, writing, and mathematics at key stage 2; here it is a drop of 7% (from 74%) since 2022. This is higher than across Doncaster as a whole (55%).

### Pupil Lifestyle Survey

The Pupil Lifestyle Survey is conducted by City of Doncaster Council to provide valuable data on children and young people's health-related behaviour, through an anonymous school-based questionnaire. Data from the survey has provided a set of Doncaster-wide figures at key points in children and young people's development; KS2, 3 and 4. The 2022 Pupil Lifestyle Survey saw 399 pupils from Edlington & Warmsworth from Years 4, 6, 8 and 10 complete the survey. Of the responses, 44% were boys and 49% were girls. 12% reported themselves as having a Special Educational Need which was the highest in the borough and higher than Doncaster as a whole (10%).

## Health Inequalities

### Long Term Health Conditions

The residents self-reporting of health in Warmsworth is in line with borough and national rates. Approximately 43.1% reported having very good health compared to the borough average of 44.3% whilst 36.6% reported having good health compared to 34.1% across the borough. There is a small percentage of residents who report having very poor health (1.4%) which is also in line with the borough average of 1.6%.

### Causes of death

A key health priority for Warmsworth is the prevalence of respiratory and circulatory conditions. Emergency hospital admissions for chronic obstructive pulmonary disease (COPD) for the ward are nearly two times the figures for England; lung cancer is the most prevalent cancer and COPD is the leading cause of mortality in the area. Respiratory conditions are largely caused by smoking and smoking prevalence is 22.8%; this number is significantly higher than the borough (19.7%). The high numbers of emergency hospital admissions suggest challenges for patients to self-manage their heart and respiratory conditions.

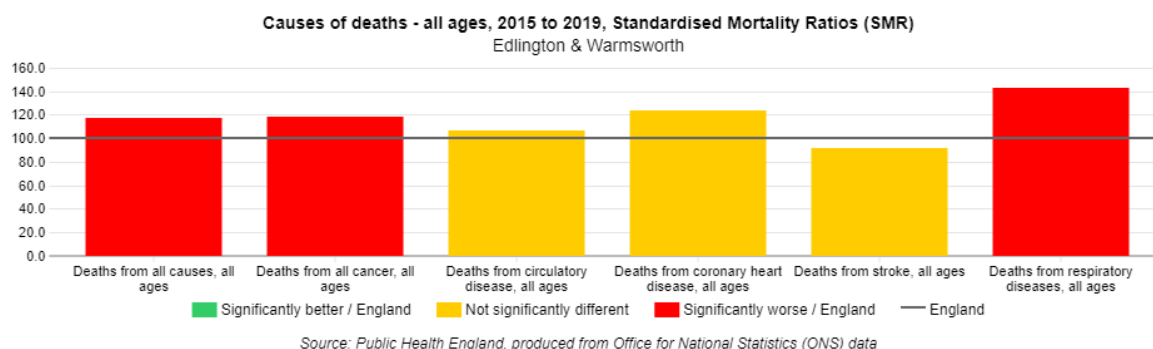


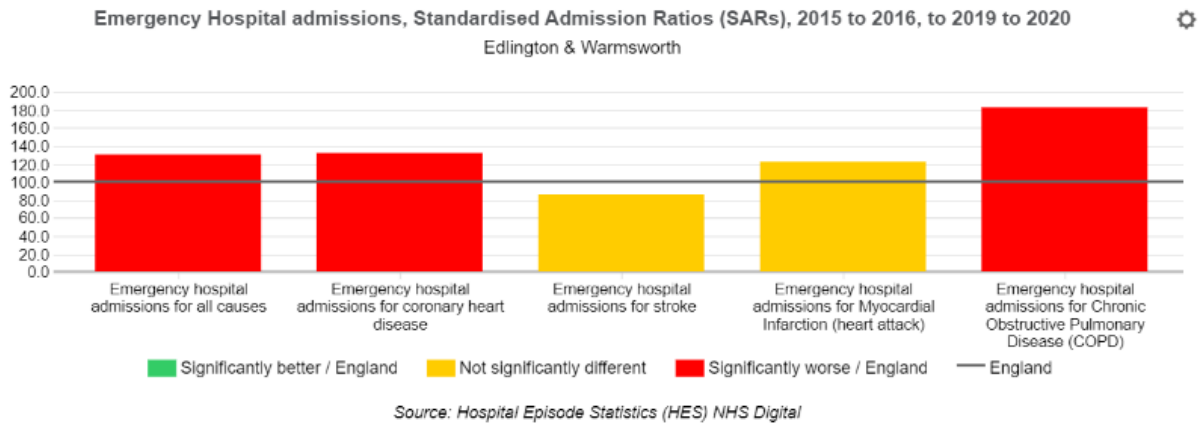
Figure 12 - Causes of Death-All Ages, Warmsworth, 2015-19

Circulatory conditions, including coronary heart disease, are the leading cause of premature death in the ward. When looking at the risk factors associated with heart conditions, 25.9% of adults binge drink and there are significantly higher hospital admissions for alcohol-related harm. Further, 30.3% of adults are obese and only 16.7% engage in healthy eating. Edlington and Warmsworth also has significantly high rates of cholesterol and high blood pressure.

The prevalence of health conditions and poor health may be impacting on the economic opportunities of residents in the ward with 2.4% providing 20-49 hours of unpaid care, significantly higher than England's 1.8% and slightly higher than Doncaster's 2.2%. This pattern continues with 3.5% providing over 50 hours of unpaid care (England 2.6% and Doncaster, 3.4%).

### Hospital admissions

In Edlington & Warmsworth the emergency hospital admissions for COPD and Coronary Heart Disease (CHD) are significantly higher than Doncaster and England indicating poor self-management and appropriate use of emergency services. There



is further evidence for this as deaths from respiratory diseases is one of the most prevalent causes of mortality in BSW with 86.1 per 100 which is much lower than the Doncaster rate of 125.3 per 100. The most prevalent cause of death is coronary heart disease with rates of 105.8 per 100, rates pan Doncaster come in at 121.8 per 100.

Figure 13 – Emergency Hospital Admissions

### Loneliness and Isolation

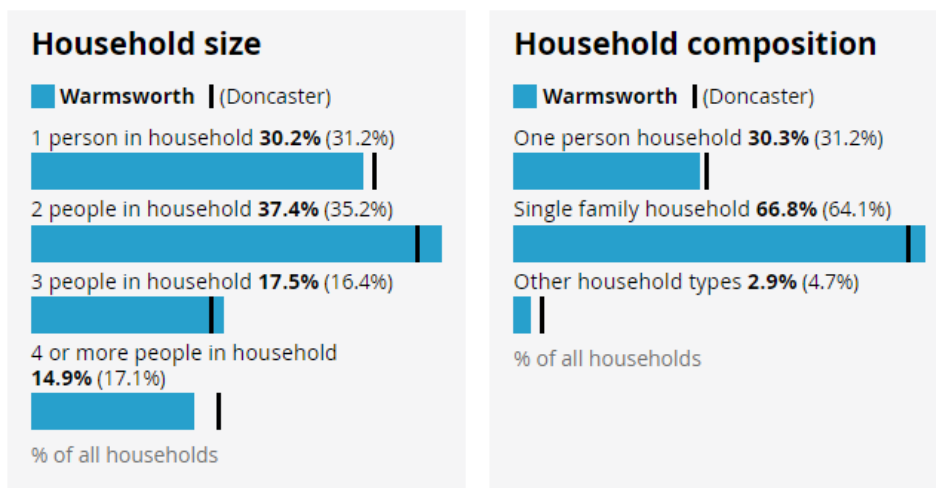


Figure 14 - Wellbeing for residents in Edlington

There are slightly lower levels of residents living on their own in Warmsworth compared to Doncaster and England. Whilst this does not necessarily imply loneliness and/or isolation, it is an indicator to be considered alongside local intelligence.

### Alcohol Intake

Data on emergency hospital admissions for alcohol-attributable conditions can be found in the previous section. The figure below shows the rate of alcohol-specific admissions per 1000 residents across the South of Doncaster by LSOA. The red line illustrates the overall rate across Doncaster at 43.7 per 1000 residents.

It Communities in Warmsworth have a higher rate of admissions for alcohol-attributable conditions. Warmsworth East has a high rate of admissions for alcohol-



contributed conditions of 48.73 per 1000 residents. This LSOA rate is higher to the overall rate across Doncaster of 43.67. For LSOAs covering Warmsworth West, a rate of 36.84 is lower compared to Doncaster.

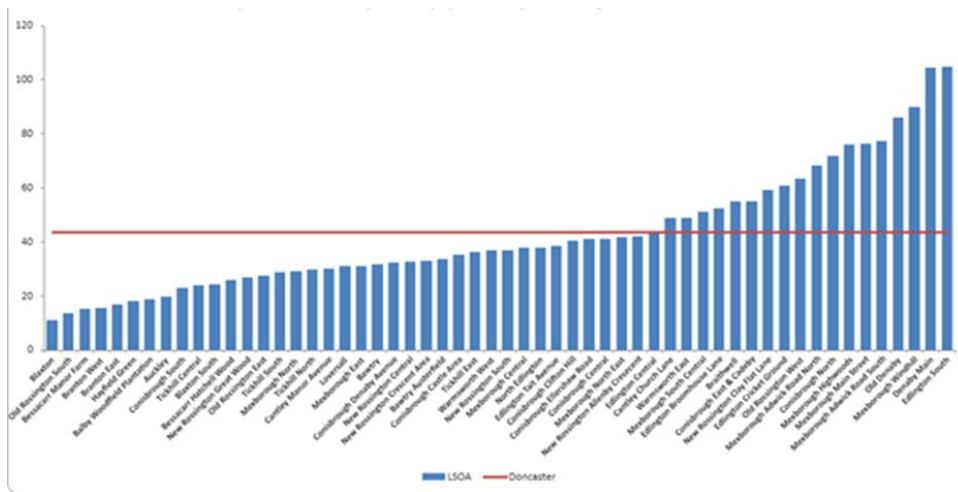


Figure 15 -Alcohol specific admissions per 1000 population (April 2016-July 2023) by LSOA in the South

When evaluating alcohol specific admissions by South PCN practice (see figure below), The Nayar Practice have reported rates of 47.24; the second highest in the south locality. Edlington Health Centre Practice have reported an admission rate of 63.84 per 1000 patients, the highest of all South practices. This is significantly higher than the 37.4 per 1000 patients reported for all Doncaster practices combined. When evaluating alcohol specific admissions St. John Practice rate of 37.53 is in line with Doncaster. The Scott Practice rate of 50.55 is significantly higher compared to Doncaster as a whole.

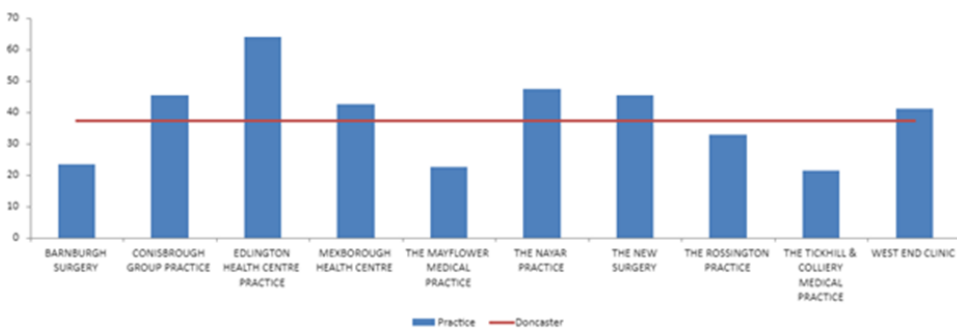


Figure 16 - Alcohol specific admissions per 1000 population (April 2016-July 2023) by PCN practice

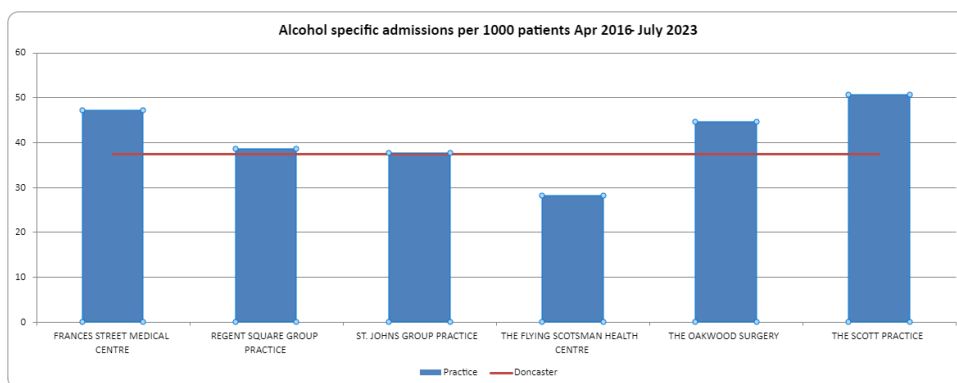


Figure 17-Alcohol specific admissions per 1000 population (April 2016-July 2023) by Central

## Smoking

Table 1- Patients Registered in Primary Care Network across Doncaster, England (NHS, 2023)

Practice	Sum of 15+	Sum of Smokers	Sum of Prev
<b>The Flying Scotsman Health Centre</b>	<b>9671</b>	<b>3053</b>	<b>31.57%</b>
<b>Frances Street Medical Centre</b>	<b>5931</b>	<b>1532</b>	<b>25.83%</b>
<b>The New Surgery</b>	<b>6143</b>	<b>1447</b>	<b>23.56%</b>
<b>The Nayar Practice</b>	<b>4229</b>	<b>979</b>	<b>23.15%</b>
<b>The Ransome Practice</b>	<b>6749</b>	<b>1519</b>	<b>22.51%</b>
<b>Edlington Health Centre Practice</b>	<b>4010</b>	<b>877</b>	<b>21.87%</b>
<b>Thorne Moor Medical Practice</b>	<b>7867</b>	<b>1688</b>	<b>21.46%</b>
<b>Conisbrough Medical Practice</b>	<b>1377</b>	<b>287</b>	<b>20.84%</b>
<b>Askern Medical Practice</b>	<b>6441</b>	<b>1333</b>	<b>20.70%</b>
<b>Field Road Surgery</b>	<b>7840</b>	<b>1615</b>	<b>20.60%</b>
<b>Kingthorne Group Practice</b>	<b>11261</b>	<b>2272</b>	<b>20.18%</b>
<b>Northfield Surgery</b>	<b>8405</b>	<b>1681</b>	<b>20.00%</b>
<b>Mexborough Health Centre</b>	<b>4130</b>	<b>821</b>	<b>19.88%</b>
<b>Great North Medical Group</b>	<b>13539</b>	<b>2682</b>	<b>19.81%</b>
<b>Regent Square Group Practice</b>	<b>8533</b>	<b>1675</b>	<b>19.63%</b>
<b>Conisbrough Group Practice</b>	<b>9756</b>	<b>1906</b>	<b>19.54%</b>
<b>Don Valley Healthcare</b>	<b>11148</b>	<b>2157</b>	<b>19.35%</b>
<b>St. Johns Group Practice</b>	<b>7301</b>	<b>1373</b>	<b>18.81%</b>
<b>The Scott Practice</b>	<b>12879</b>	<b>2327</b>	<b>18.07%</b>
<b>The Rossington Practice</b>	<b>6766</b>	<b>1207</b>	<b>17.84%</b>
<b>The Lakeside Practice</b>	<b>7261</b>	<b>1280</b>	<b>17.63%</b>
<b>Denaby Medical Practice</b>	<b>2921</b>	<b>509</b>	<b>17.43%</b>

West End Clinic	3706	643	17.35%
White House Farm Medical Centre	5181	867	16.73%
Asa Medical Group	16707	2794	16.72%
Petersgate Medical Centre	7633	1225	16.05%
St Vincent Medical Centre	12203	1817	14.89%
The Oakwood Surgery	4797	677	14.11%
Mount Group Practice	11271	1567	13.90%
Scawsby Health Centre Practice	4850	655	13.51%
The Burns Practice	13152	1717	13.06%
Hatfield Health Centre	7785	952	12.23%
Park View Surgery	2126	238	11.19%
Dunsville Medical Centre	5268	542	10.29%
The Tickhill & Colliery Medical Practice	7447	700	9.40%
The Mayflower Medical Practice	6353	544	8.56%
Barnburgh Surgery	2044	174	8.51%
<b>Doncaster</b>	<b>274681</b>	<b>49332</b>	<b>17.96%</b>

Table 2- Smoking Prevalence in Primary Care Network across Doncaster, England (NHS, 2023)

PCN	Sum of 15+	Sum of Smokers	Sum of Prev
4 Doncaster PCN	47887	7373	15.40%
<b>Doncaster Central PCN</b>	<b>49112</b>	<b>10637</b>	<b>21.66%</b>
Doncaster East PCN	59053	10139	17.17%
Doncaster North PCN	64045	11885	18.56%
<b>Doncaster South PCN</b>	<b>54584</b>	<b>9298</b>	<b>17.03%</b>
<b>Doncaster</b>	<b>274681</b>	<b>49332</b>	<b>17.96%</b>

According to NHS England in 2023 (NHS England Quality and Outcomes Framework 2022-2023), there are 54584 patients older than 15 years registered patients with Doncaster South Primary Network (PCN) in Doncaster. 9298 of those are registered as smokers. Making up 17.03% of registered patient smokers across south of Doncaster. This percentage is slightly lower than across Doncaster (17.96%). In the central primary care network, there are 49112 registered patients that report as smokers this is above the Doncaster average.

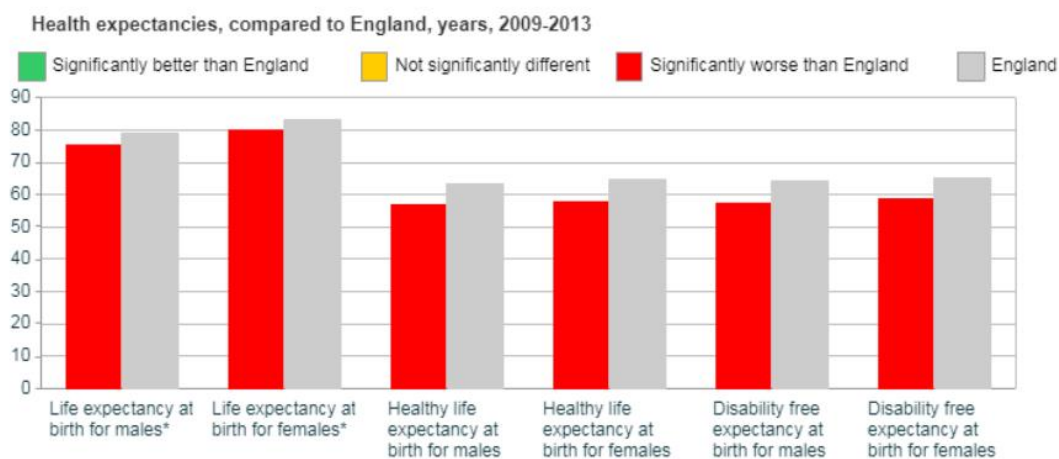
The Nayar Practice & Edlington Health Centre Practice are in Edlington. In the Nayar Practice there are 23.15% (979 out of total registered patients of 4229) registered as smokers. In Edlington Health Centre Practice there are 21.87% registered as smokers (877 patients out of 4010). Both percentages are significantly higher compared to Doncaster. Warmsworth residents may also be registered at the Scott Practice and St. Johns group practice where the percentage of patients who report as smokers is 18.07% and 18.81% respectively. This is likely to contribute to the higher levels of respiratory disease and relatable Hospital Admissions as shown above. The Edlington and Warmsworth ward has a high prevalence of respiratory and circulatory condition. Respiratory conditions are largely caused by smoking. Emergency hospital admissions for chronic obstructive pulmonary disease (COPD) for the ward are nearly twice the figures for England; lung cancer is the most prevalent cancer and COPD is the leading cause of mortality in the area.

It must be noted that data is taken from self-reported measures when signing up to a GP. Residents registered at GPs do not necessarily reside in that community. This may not truly reflect the prevalence of smoking in specific communities. Also, it relies on individuals self-reporting their behaviours.

### Life Expectancy

People living in Edlington and Warmsworth ward have a lower life expectancy and live more years in poor health in comparison to Doncaster and England. Life expectancy for men is significantly lower in Edlington at 76.9yrs (England 79.7yrs) and has decreased by 8 months since the last data reported in 2021 (Edlington 77.7yrs). Life expectancy for women in Edlington was 81.9yrs, in 2021, data shows this is now reduced by 9 months to 81yrs which is lower than England (83.2yrs).

Both men and women in Edlington and Warmsworth are experiencing significant inequalities in terms of their healthy life expectancy. Men are expected to develop a health condition at aged 56 and women aged 57, therefore decreasing the opportunity of living in better health by 6.9 years and 7 years, respectively.



Source: Public Health England, produced from ONS data Copyright © 2016

Figure 18– Life and Health Life Expectancy in Edlington and Warmsworth

### Vulnerable Victims

Across the South locality, there were 8 cases of vulnerable people being supported. These numbers are linked to the number of closed cases in hotspot locations across the locality and shows a reduction in the local work conducted. In particular, the contact required through dedicated work in Mexborough may affect South locality cases. This has been done to help address inequalities and vulnerabilities experienced by those in need.

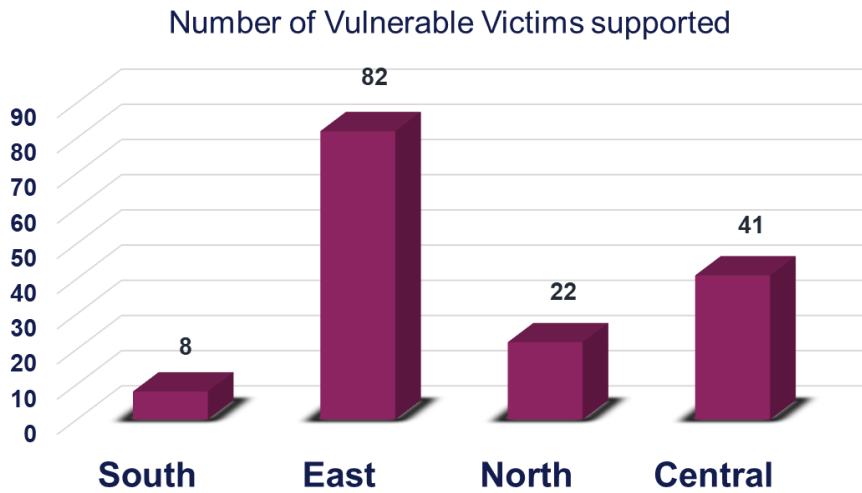


Table 19- Number of vulnerable victims supported in Doncaster

## Physical activity

Levels of physical activity in Edlington and Warmsworth are low compared to the rest of the borough as seen in the map below which identifies the areas with the highest number of inactive households:

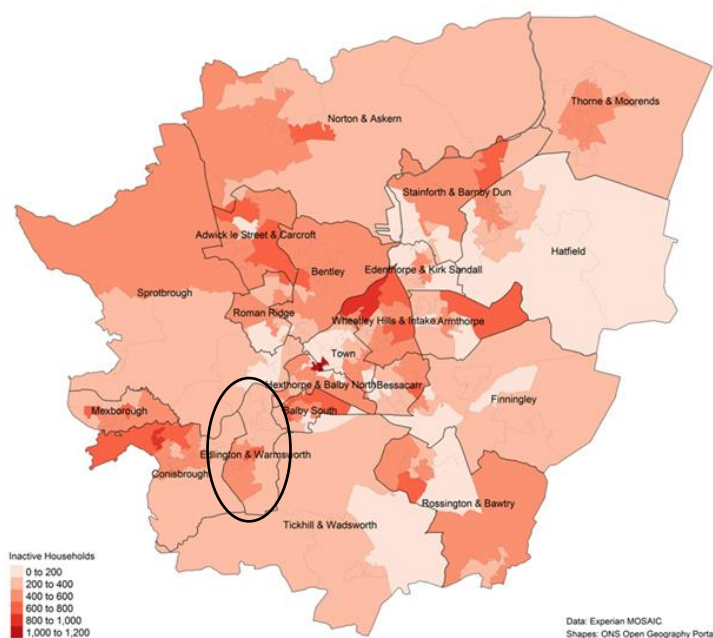


Figure 20- Mosaic map of physical activity levels in Doncaster

## Green Spaces and Parks

Warmsworth is near to assets and green spaces within the ward. Warmsworth is adjacent to open countryside. It has easy access to Don Gorge and to other countryside footpaths and open spaces. Warmsworth Park offers space to all age groups. It has playground and open fields.

Table 3 - Green spaces and parks by postcodes

Green Space		
Asset	Name	Postcode
Play Park	Howbeck Drive	DN12 1PW
	Guest Lane	DN4 9NT
	Common Lane	DN4 9JY
	Broomhouse Lane	DN12 1EW

	Auburn Road	DN12 1DP
Park	Warmsworth Park	DN4 9LS
Green Space	Edlington Pitwood	DN12 1ES
	Martin Wells Lake	DN12 1PP

Martinwells Lake is an important asset to the community that can be used to promote health improvement and enhance community cohesion and is overseen by Friends of Martinwells Lake. This group, together with Edlington Community Organisation, have led various events, litter picks and have revamped the green space with new paths, gym equipment and benches.

Edlington Pitwood has been named as one of the Future Parks in which, this has had a £1.8m investment from Sport England. Future Parks has been launched to maximise opportunities from the Local Delivery Pilot (LDP), this is to help enhance green spaces in Doncaster. More information on the LPD can be found in the [appendix](#). The Edlington Pitwood Group are working alongside Doncaster Councils – Future Park team along with a Community Connector who is has been funded by Get Doncaster Moving to gain more insight into how the residents would like to shape the future of the park.

As well as ensuring that there is access to green space, Doncaster Council has also declared Air Quality Management Areas (AQMAs). Further links can be found in the [appendix](#).

The playgrounds and play parks consist of a multi-use games area, toddler and junior play areas, outdoor gym equipment and playing fields.

## Community Information

### Population

#### Population Size

Warmsworth: 3700

#### Age Profile

## Warmsworth

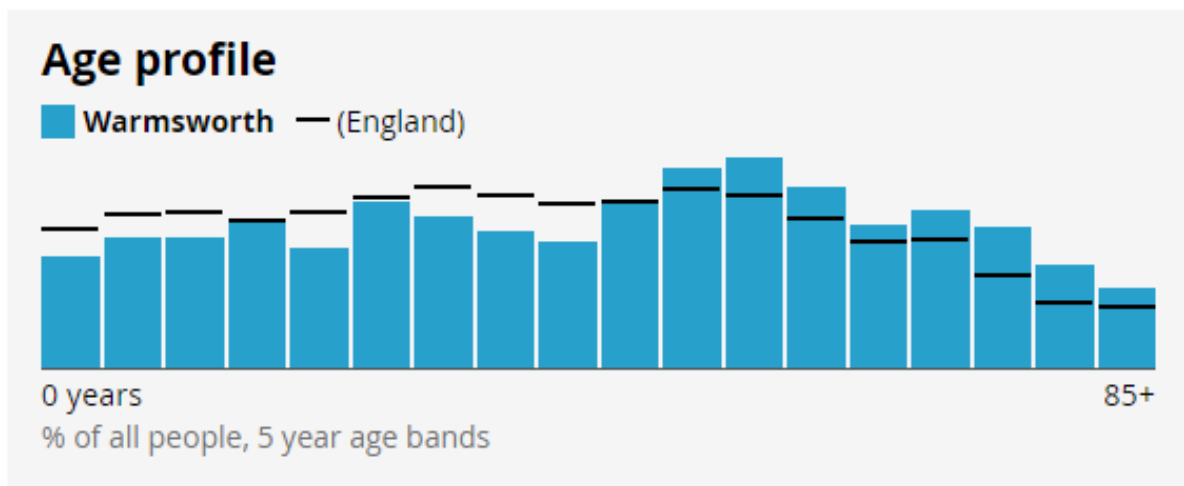


Figure 21 -Population of Warmsworth, source: Census 2021

### Ethnicity and Language

Warmsworth is predominantly White British (96.3%), this is higher than the national make up (81%). 1.2% of the population are from mixed or multiple ethnic groups which is lower than the national average of 4.2%. The 2021 census data states that 96.5% of residents hold a UK only national identity which is lower than the national average of 88%. The overwhelming majority of residents were born in the UK 95.4% compared to the national average 82.6% whilst those born outside of the UK is 4.6% compared to the UK average of 17.4%. The overwhelming majority of residents main language is English with 97.5% of residents, compared to the 90.8% average across the UK, whilst 0.0% of residents cannot speak English.

0.6% of the population are from a Black, Asian & Minority Ethnic (BAME) group. (Asian/Asian British/Asian Welsh 0.9%, Black, Black British/Black Welsh, Caribbean, or African 1.3%, Mixed/Multiple ethnic groups 1%, Other ethnic 0.8%). The 2021 Census data reports that 11.7% of the population were born outside of the UK, slightly higher than Doncaster at 10.4%. in the 2021 Census, 91% reported English as their main language, slightly lower than Doncaster (92.8%). 1.6% reported not speaking English well (Doncaster 1.4%) and 0.2% reported they cannot speak English (Doncaster 0.2%).

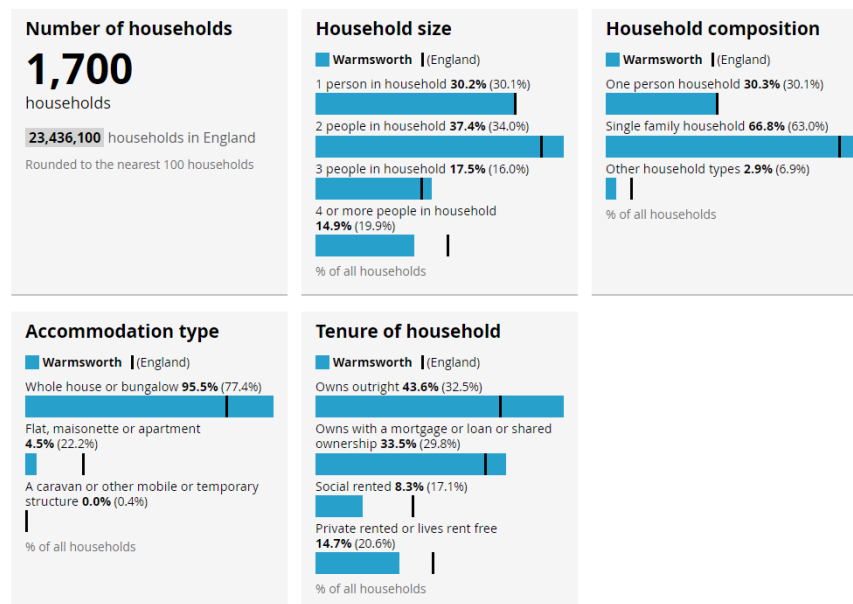


## Housing

Housing conditions and the surrounding environment can have profound impacts upon residents' health and exacerbate health inequalities. Housing data for the LSOAs that make up Warmsworth is available. This data explores several variables to analyse the housing stock.

Most of the housing within Warmsworth is owned outright by residents with 46.3%, which is significantly higher than the Doncaster average at 33.6%. There is a significantly lower proportion of both social rented (8.3%) and private rented/living rent free (14.7%) compared to the Doncaster averages being 17% and 19.7% respectively. It should be noted that the most common household size across BSW is 2 people per household (37.4%), whilst the most common house size is 3-bedroom homes (58.5%). This means that residents are living in bigger households than they need, this could lead to high levels of deprivation, fuel poverty and larger bills.

### Warmsworth



Source: Office for National Statistics - Census 2021

Figure 25- Housing in Edlington Compared to Doncaster, Census 2021

## St Leger Housing

St Leger Homes provide housing services across Doncaster. They manage over 21,000 residences which are owned by the City of Doncaster Council. High levels of social housing, with a large proportion of bungalows and terraced housing are an indicator of deprivation and associated with overcrowding, low income and can consequently affect poor levels of childhood development. The number of socially rented houses along with the number of homeless families in Warmsworth can be seen in the table below.

Table 4- social housing

Locality	Community	1 bed bungalow	2 bed bungalow	1 bed flat	2 bed flats	2 bed houses	3 bed houses	Total SLHD homes
South	Warmsworth	30	31	32	5	6	24	128

### Crime/ Antisocial Behaviour (ASB)

The Stronger Communities purpose is for there to be a strong, active, inclusive and resilient communities across the whole of Doncaster, effectively building on and using their strengths and assets to work in partnership to improve their quality of life and well-being, to make their neighbourhoods safe and supportive and be able to tackle the issues that matter to them. The table below shows that the South has the highest number of ASB and hate crime figures in the city. Of those 1657 cases across the South locality, 73 occurred in Edlington and Warmsworth, the second lowest in the locality.

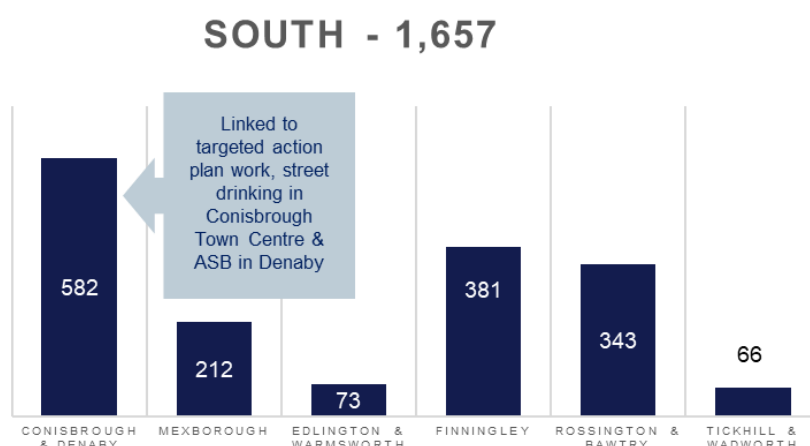


Figure 26. Table and hate crime in the South of Doncaster

## Community Insight

### Appreciative Inquiry

The Well Doncaster Team undertake Appreciative Inquiry (AI) within communities to gather insight to inform co-designed action plans with the community. Armstrong (2020) suggests in 'A changing world, again. How Appreciative Inquiry can guide our growth' that reframing the questions in light of a crisis like Covid-19 and drawing on strengths and assets from past positive experience will help participants as they

restructure their community. The AI questions are structured to pull out the successes of the past and present, to seek new potentials and possibilities and build on those through the Dream and Design stages.

The Appreciative Inquiry will include the following steps:

1. **Discovery Phase** – This will involve engagement with the residents of to find out what is working well in the community. Responses will be themed to allow priorities of the community to be established.
2. **Dream** – Residents and key stakeholders will be invited to attend an initial workshop to discuss what ideas they have for their community and how these will meet the priorities highlighted in the discovery phase.
3. **Design** – All attendees are invited back for a second workshop to develop an action plan to direct work for the community.
4. **Destiny** – A collaborative way of working and investing resources to meet the actions from the previous phase.

Well Doncaster are currently undertaking the Discovery stage of the Appreciative Inquiry in Warmsworth to gather insight.

### Doncaster Talks

In 2019 Doncaster Talks undertook insight across the borough of Doncaster. Responses were separated into wards and thematically analysed. Across Edlington and Warmsworth ward 188 responses were received (1.59% of the Ward), the main themes on what people liked about the area, what could be improved, and what the borough should focus on are displayed below. These responses have been included in the AI approach, and the insight matches that of the AI conversations.

# EDLINGTON & WARMSWORTH

- Like**
- Community, friendly, neighbours
  - Parks and greenspaces
  - Ample support in the community
- Improve**
- ASB including gangs and youth, bikes
  - Young intervention
  - Police presence and response
  - Litter and cleanliness
- Focus**
- Community Spirit
  - Assets (buildings and people)
  - Environment (including green spaces)
  - Children and Young people
  - Safety

## Locality Plans

Like 	Improve 
 <p><b>Thriving communities:</b> Good neighbours/people</p>	 <p><b>Community Safety:</b> Police visibility, youth ASB/crime, ASB in general, road safety, feeling unsafe, drug and alcohol issues</p>
 <p><b>Community Groups:</b> Support and activities</p>	 <p><b>Thriving communities:</b> Improvements to housing, especially some on the Royal Estate</p>
 <p><b>Environment &amp; Green Spaces:</b> Good access to green spaces</p>	 <p><b>Environment &amp; Green Space:</b> Litter</p>

Locality plans look at how we can together to strengthen communities and improve the lives and opportunities for residents living there.

The South Locality Plan has been developed in conjunction with residents and sets out what

will be done to improve the community over the next 12 months. Communities were engaged with through several different ways:

The 2023-24 Locality Plan for the South Area outlines a set of priorities and can be viewed using the following link: [South Locality Plan 2023 - Draft Version.pdf \(windows.net\)](#)

### Community Investment

Since 2020, a total of £821,780 has been invested into the South locality, of which £331,610 has been invested into the Edlington and Warmsworth ward. The main priorities to address using this investment are increasing the use of community assets, investment and training for residents and community organisations.

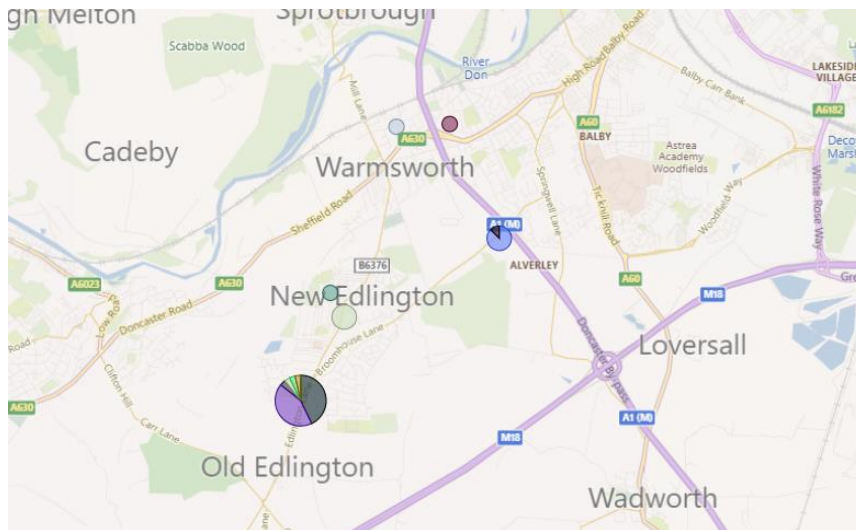


Figure 27- community investment in the South locality

## Appendix

### Well Doncaster Annual reports

Well Doncaster Approach: <https://youtu.be/e1RKOZoGI10>

More information about how Well Doncaster has been meeting outcomes and objectives can be found in past and present annual report:

<https://welldoncaster.wordpress.com>

### Census data 2021

The census is undertaken by the Office for National Statistics every 10 years and gives us a picture of all the people and households in England and Wales.

[Build a custom area profile - Census 2021, ONS](#)

[Census Maps - Census 2021 data interactive, ONS](#)

### Public Health Data

#### Fingertips

This is a new fingertips profile that uses data from Local Health an existing PHE data tool. Local Health is a collection of quality assured health information presented for small geographical areas. By presenting data for small areas, Local Health provides evidence of inequalities within local areas. It supports targeted interventions to reduce such inequalities.

Local Health contains indicators related to:

- Population and demographic factors
- Wider determinants of health
- Health outcomes

It presents data for middle super output areas (MSOA), electoral wards, clinical commissioning groups (CCG), local authorities, and England as a whole.

Please note, as the Local Health tool was designed to allow users to map small area data, a mapping option has not been provided in this profile.

<https://fingertips.phe.org.uk/profile/local-health/data#page/0>

[Local Health - Public Health England - Reports: get a dashboard on a custom area](#)

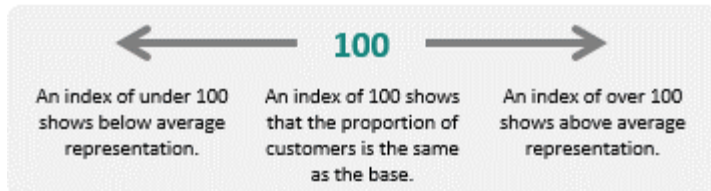
### Acorn profiles

Wellbeing Acorn segments the population into 4 groups (Health Challenges; At Risk; Caution; Healthy) and 25 types describing the health and wellbeing attributes of each postcode across the country. By analysing significant social and health related behaviour, it provides precise information and an in depth understanding of upstream issues affected by current lifestyle traits

## INTERPRETING THE REPORT

The Wellbeing Acorn profile report helps you understand the underlying demographics, lifestyle and health attributes of your customers and service users by comparing their Wellbeing Acorn profile to a base (e.g. UK population, area or other customer groups).

### INDEX



The Wellbeing Acorn Profile contains 12 variables that are indicators of Disability or Infirmity in the population and 9 variables related to unhealthy Behaviours. The average score measured against the base profile of Yorkshire and the Humber is 100. A value above 100 indicates that the area population is overrepresented for this characteristic, below 100 the value is less than the average or underrepresented.

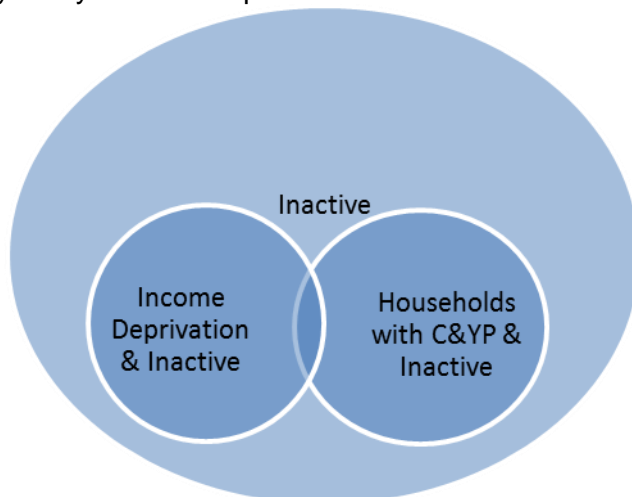
### Get Doncaster Moving survey

<https://getdoncastermoving.org/uploads/behavioural-insight-phase-one-summary-report.pdf?v=1644581925>

### Mosaic data

Mosaic Public Sector classifies the UK population into one of 66 types and 15 groups through a detailed and accurate understanding of each citizen's demographics, lifestyles, behaviours and location.

The Physically Inactive Population of Doncaster



The MOSAIC types who “Do not exercise” and “Do not take part in Sport” were searched and three priority groups have been identified through work with strategic partners as part of the development of Doncaster’s Physical Activity Strategy. The three priority groups are:

- The Inactive
- Families with children and young people
- People living in income deprivation

These groups are cross-referenced against the inactivity list allowing for the identification of MOSAIC types which are both likely to be inactive and living in deprivation as well as inactive and from households with children and young people.

Link to the Get Doncaster Moving strategy; [Let's Get Moving! | Get Doncaster Moving](#)

### [Pupil Lifestyle Survey 2022](#)

[Pupil Lifestyle Survey - Healthy Schools \(healthylearningdoncaster.co.uk\)](https://healthylearningdoncaster.co.uk)

### [Power BI – Joint Strategic Needs Assessment](#)

The Joint Strategic Needs Assessment (JSNA) is a process that identifies the current and future health and wellbeing needs of a local population. The dashboards show information about the employment, health, and wellbeing of people in Doncaster. We use this information to inform our policies and strategies to improve the lives of everyone in the Doncaster area.

[Joint Strategic Needs Assessments - Team Doncaster](#)

